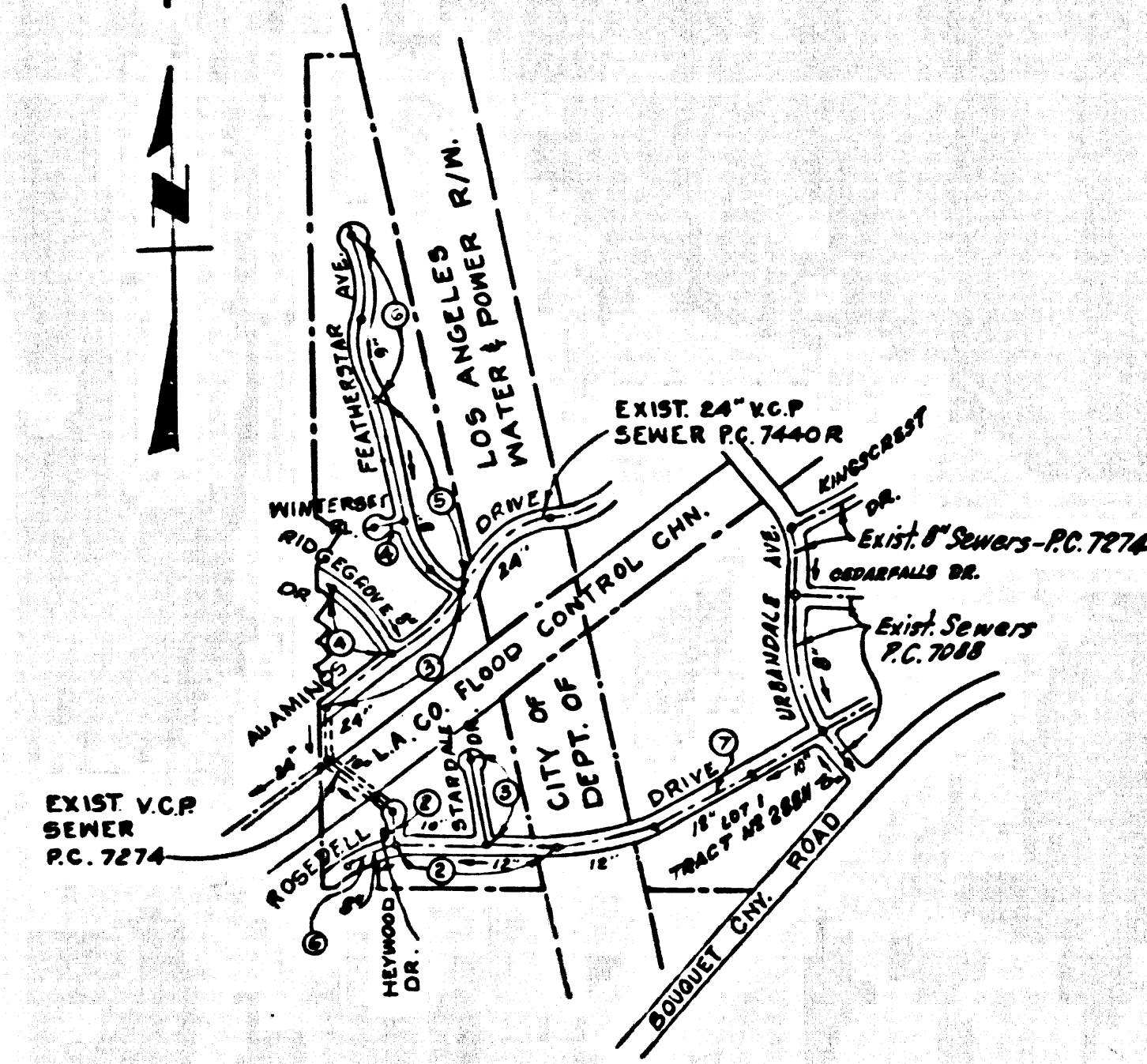


B.M. 51-1741 ELEV. 1349.390
 BLBMS V-8 FD FLOOD CONT. MON.
 FLUSH 27 FT. SLY. E. BOGUET CANYON
 ROAD 175 FT. NLY. OF PLUM
 CANYON ROAD MKD. (144-00800 1963)
 NENHALL QUAD. 19 56



INDEX MAP
 TRACT No. 29463
 P.C. No. 7495
 SCALE 1" = 600'

NOTE:
 NUMBERS IN CIRCLES INDICATE
 PAGE NUMBERS.

DOUBLE SCALE
 NEWHALL BLDG. DIST. NO. 8.2

PROFILE, ALIGNMENT AND GRADE OF
 SANITARY SEWERS PAGE 1
 TO BE CONSTRUCTED IN
 TRACT No. 29463

PRIVATE CONTRACT NO. 7495

W.S. G 2
 4 SHEETS, 7 PAGES
 SCALE: VERT. 1" = 4' HORIZ. 1" = 40'
 DATE: MAY 1966
 PREPARED IN THE OFFICES OF
 M^{rs} INTIRE & QUIROS INC.
 REG. C. E. NO. 12207

FOR LEGEND SEE PLAN NO. S-1

- NOTES:
1. PROVIDE STAKES ON THE PROPERTY LINE OR PROPERTY LINES PRODUCED AT RIGHT ANGLES TO THE SEWER LINE AT THE CENTER LINE OF EACH MANHOLE.
 2. NO REPRESENTATIVE OF THE COUNTY ENGINEER WILL SURVEY OR LAY OUT ANY PORTION OF THE WORK.
 3. THE PRIVATE ENGINEER SHALL FURNISH THE COUNTY ENGINEER WITH GRADE SHEETS AND STATIONING FOR ALL HOUSE LATERALS AND "Y" BRANCHES AND SHALL PROVIDE STAKES FOR THEM AT THEIR PROPER LOCATIONS WITH STATIONING PLAINLY MARKED. ALL HOUSE LATERALS SHALL BE CONSTRUCTED IN A STRAIGHT ALIGNMENT AT RIGHT ANGLES TO THE MAIN LINE SEWER EXCEPT AS SHOWN ON THE PLANS. HOUSE LATERALS FROM CHIMNEYS SHALL NOT HAVE AN ANGLE OF LESS THAN 45° WITH THE MAIN LINE SEWER. ANY CHANGE IN ALIGNMENT SHALL BE REQUESTED IN WRITING BY THE PRIVATE ENGINEER.
 4. THE PRIVATE ENGINEER SHALL FURNISH THE HOUSE LATERAL DEPTH AT THE PROPERTY LINE BELOW THE TOP OF CURB ELEVATION FOR EACH HOUSE LATERAL ON THE GRADE SHEET.
 5. NO REVISIONS SHALL BE MADE IN THESE PLANS WITHOUT THE APPROVAL OF THE COUNTY ENGINEER.
 6. THE CONTRACTOR SHALL NOTIFY THE CONSTRUCTION DIVISION BY TELEPHONE, MADISON 9-6749, EXT. 81521, AT LEAST TWENTY-FOUR HOURS BEFORE STATING ANY WORK UNDER THIS CONTRACT.
 7. MANHOLES SHALL BE BRICK SEWER STRUCTURES PER S-3. PRECAST CONCRETE MANHOLES PER S-5 OR S-4 MAY BE USED AS AN ALTERNATE IN LOCATIONS APPROVED BY THE COUNTY ENGINEER.
 8. USE STANDARD MANHOLE FRAMES AND COVERS, S-15, EXCEPT AS NOTED.
 9. MANHOLE TOPS IN UNIMPROVED RIGHTS-OF-WAY TO BE SIX INCHES ABOVE FINISHED GRADE.
 10. USE EXTRA STRENGTH PIPE, ALL PIPE IS STANDARD DEPTH EXCEPT AS NOTED.
 11. USE MECHANICAL COMPRESSION JOINTS FOR ALL V.C.P. JOINTS PER SPECS. SECS. 36, 48 & 49.
 12. IF A POWER POLE IS WITHIN THREE FEET OF THE SEWER, THE SEWER SHALL BE ENCASED, PER S-23, TWO FEET ON EACH SIDE FROM THE POINT OF INTERFERENCE.
 13. IN DRAINING THE COURSE OF CONSTRUCTION IT IS DETERMINED THAT THERE IS LESS THAN FOUR FEET OF COVER OVER THE TOP OF A MAIN LINE OR HOUSE LATERAL V.C.P. SEWER WHICH IS NOT INDICATED ON THE PLANS, THE PIPE SHALL BE ENCASED PER S-23, UNLESS OTHERWISE APPROVED BY THE COUNTY ENGINEER.
 14. HOUSE LATERALS TO BE CONSTRUCTED WITH INVERTS AT PROPERTY LINE 4 FEET BELOW CURB GRADE EXCEPT AS NOTED.
 15. RESURFACE ALL TRENCHES WITHIN PAVED AREAS TO MEET L.A. COUNTY ROAD DEPT. OR CALIFORNIA STATE HIGHWAY REQUIREMENTS IN ACCORDANCE WITH PERMITS.
 16. FOR ALLOWABLE LEAKAGE TEST USE FORMULA NO. 2, SPECS., SEC. 54.
 17. ALL STATE AND LOCAL TRENCH SAFETY ORDERS WILL BE STRICTLY ENFORCED.
 18. ADJUST ALL EXISTING MANHOLE TOPS TO FINISHED ROAD GRADE.
 19. CONSTRUCTION IN FILLED AREAS
 20. AN ACCEPTABLE CERTIFICATION OF COMPACTION TEST RESULTS SHALL BE SUBMITTED TO THE CONSTRUCTION DIVISION
 21. NO CONSTRUCTION IS PERMITTED IN FILLED AREAS WHERE THE RELATIVE DENSITY OF COMPACTION IS LESS THAN 80%.
 22. IF THE RELATIVE DENSITY OF COMPACTION IS LESS THAN 80%, ALL MAIN LINE AND HOUSE LATERALS SHALL BE ENCASED PER S-23 OR HAVE A SPECIAL AGGREGATE BASE PER S-31, SAME AS SPECIAL MANHOLE BASES PER S-14 ARE REQUIRED.
 23. IF THE RELATIVE DENSITY OF COMPACTION IS 30% OR GREATER, THE SPECIAL PROVISIONS IN S-31 ARE NOT REQUIRED.

REVISION: AUGUST, 1967
 PAGE 7 (VIEWS A, B & C) - PAGE 7 REDRAWN - VIEWS B & C DELETED. LOTS AND STREETS SOUTH ON ROSEDELL DR. REVERTED TO ACRES BY TRACT No. 28811. SHOW LOT 1, TRACT No. 28811 AS NEW LEGAL DESCRIPTION. REVISE INDEX MAP. PLUS LATERALS FROM EXISTING MANHOLES IN ROSEDELL DR. AT STA. 19+70.4 (NENHALL DIST.) AND STA. 19+56.30 (ELKSIDE DIST.) AND ABANDON SHOWN PER SPECS. SEC. 50 IN BOTH STREETS.
 APPROVED *Ralph Schaper* 1/30/67
 OFFICE OF COUNTY ENGINEER

Any connection to the sewage system of County Sanitation District, provided directly or indirectly by the sewers shown on these plans, shall be considered a temporary connection until all area sewered is annexed to said district at which time the connection shall become permanent. If for any reason the annexation to the district of any area sewered hereunder is not completed, the property not in the district will be required to disconnect unless a contract is entered into with the district providing for the disposal of sewage from the area.

COLLECT CHARGES AS INDICATED
Ralph Schaper

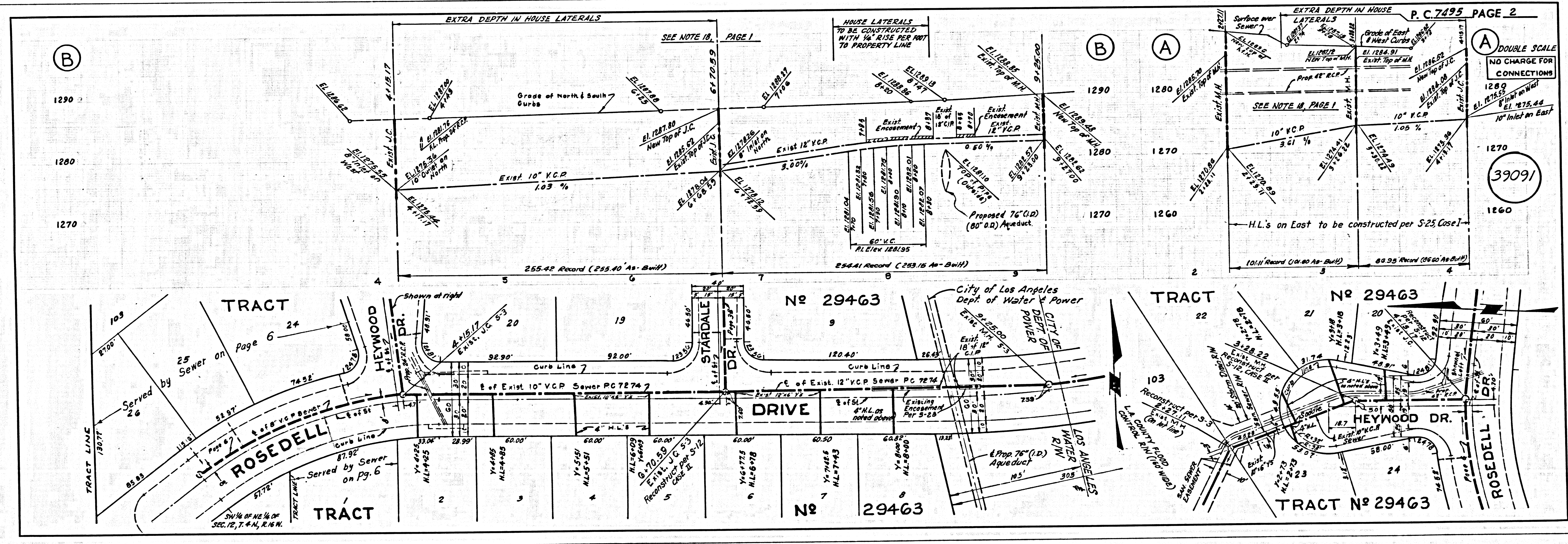
NO CONNECTIONS FOR THE DISPOSAL OF INDUSTRIAL WASTES SHALL BE MADE TO SEWERS SHOWN ON THESE DRAWINGS WITHOUT WRITTEN PERMISSION FROM THE CHIEF ENGINEER AND GENERAL MANAGER OF THE COUNTY SANITATION DISTRICTS.

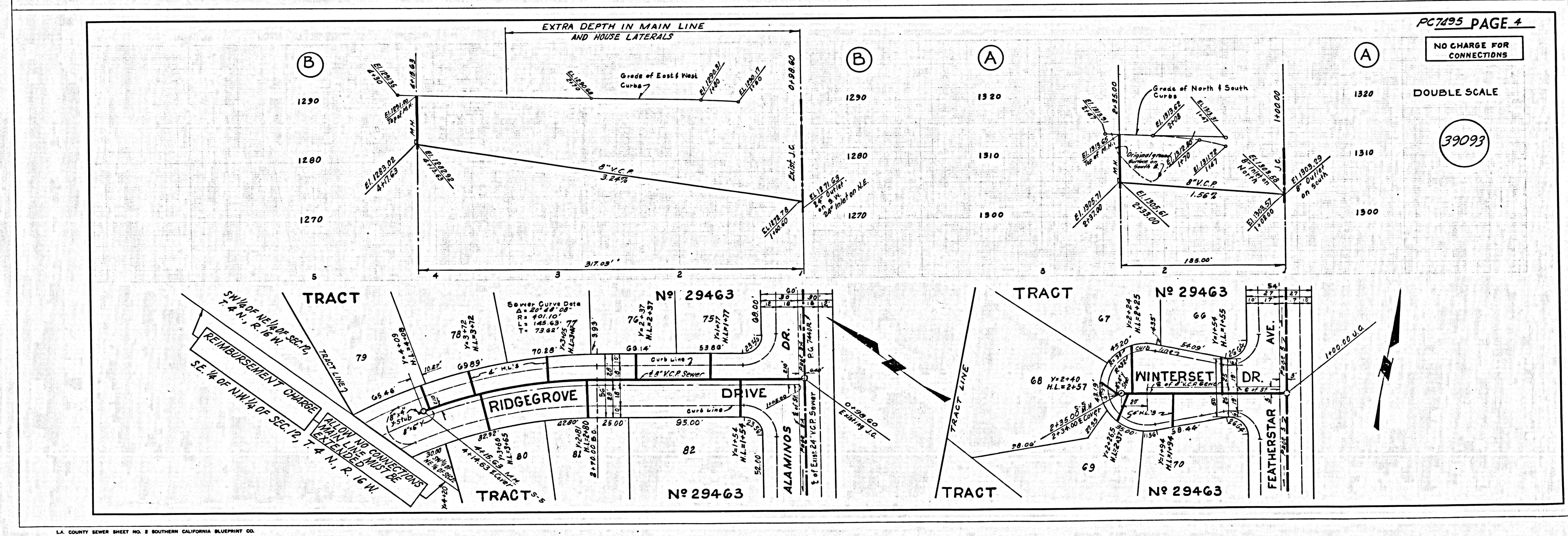
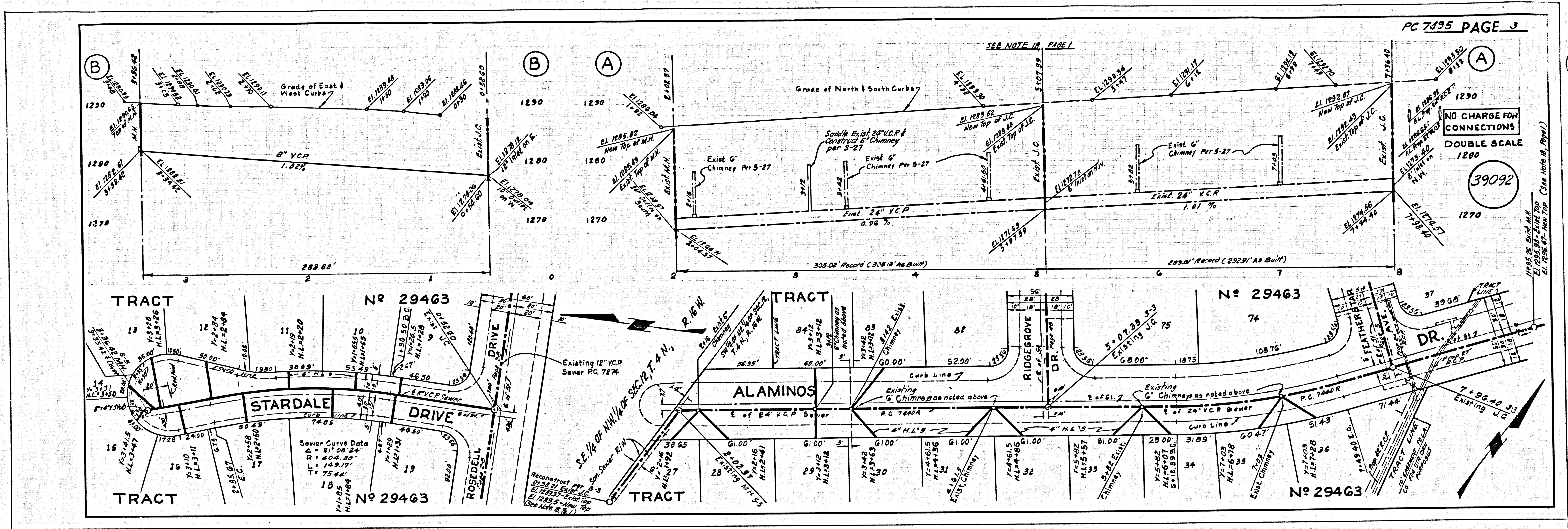
GRADES TO WHICH THIS IMPROVEMENT IS TO BE CONSTRUCTED ARE SHOWN ON PLANS AND PROFILES. GRADE POINTS FOR TOP OF CURBS, CENTER LINE OF STREETS, CENTER LINE OF ALLEYS ARE SHOWN BY CIRCLES ON PROFILES. AT ALL POINTS BETWEEN DESIGNATED POINTS THE GRADE SHALL BE ESTABLISHED SO AS TO CONFORM TO A STRAIGHT LINE DRAWN BETWEEN SAID DESIGNATED POINTS. ELEVATIONS ARE IN FEET ABOVE U.S.C. & G.S. MEAN SEA LEVEL DATUM OF 1929. THIS DRAWING AND THE DATA HEREON SHALL BE MADE A PART OF THE SPECIFICATIONS. AS REVISED WORK SHALL BE CONSTRUCTED ACCORDING TO STANDARD SPECIFICATIONS DATED MAY 22, 1962, ON FILE IN THE OFFICE OF THE COUNTY ENGINEER AND SHALL BE PROSECUTED ONLY IN THE PRESENCE OF THE COUNTY ENGINEER. BEFORE WORK CAN BE STARTED, THE CONTRACTOR MUST OBTAIN A PERMIT TO EXCAVATE IN COUNTY STREETS FROM THE L.A. COUNTY ROAD DEPT., DISTRICT OFFICE NO. 5 AND PAY A FEE TO THE COUNTY ENGINEER, ROOM 303, COUNTY ENGINEERING BUILDING, 308 WEST SECOND STREET OR 447 W. 21ST ST., REGIONAL OFFICE, SUFFICIENT TO COVER THE COST OF CONSTRUCTION INSPECTION AND MOBILE PLANS. APPROVAL OF THIS PLAN BY THE COUNTY OF LOS ANGELES DOES NOT CONSTITUTE A REPRESENTATION AS TO THE ACCURACY OF THE LOCATION OR OF THE EXISTENCE OR NON-EXISTENCE OF ANY UNDERGROUND UTILITY PIPE, OR STRUCTURE WITHIN THE LIMITS OF THE PROJECT. THIS NOTE APPLIES TO ALL PAGES. IF WORK IS TO BE DONE IN A STATE HIGHWAY, A PERMIT MUST BE OBTAINED FROM THE STATE OF CALIFORNIA, DIVISION OF HIGHWAYS, 1200 SOUTH BRIDGE STREET, LOS ANGELES, CALIFORNIA.

COUNTY OF LOS ANGELES, CALIFORNIA
 JOHN A. LAMBIE, COUNTY ENGINEER J. D. PARKHURST, CHIEF ENGINEER
 CO. SAN. DIST. NO. 8.2
 APPROVED BY *Ralph Schaper* APPROVED BY *John A. Lambie*
 SANITATION ENGINEER OFFICE ENGINEER

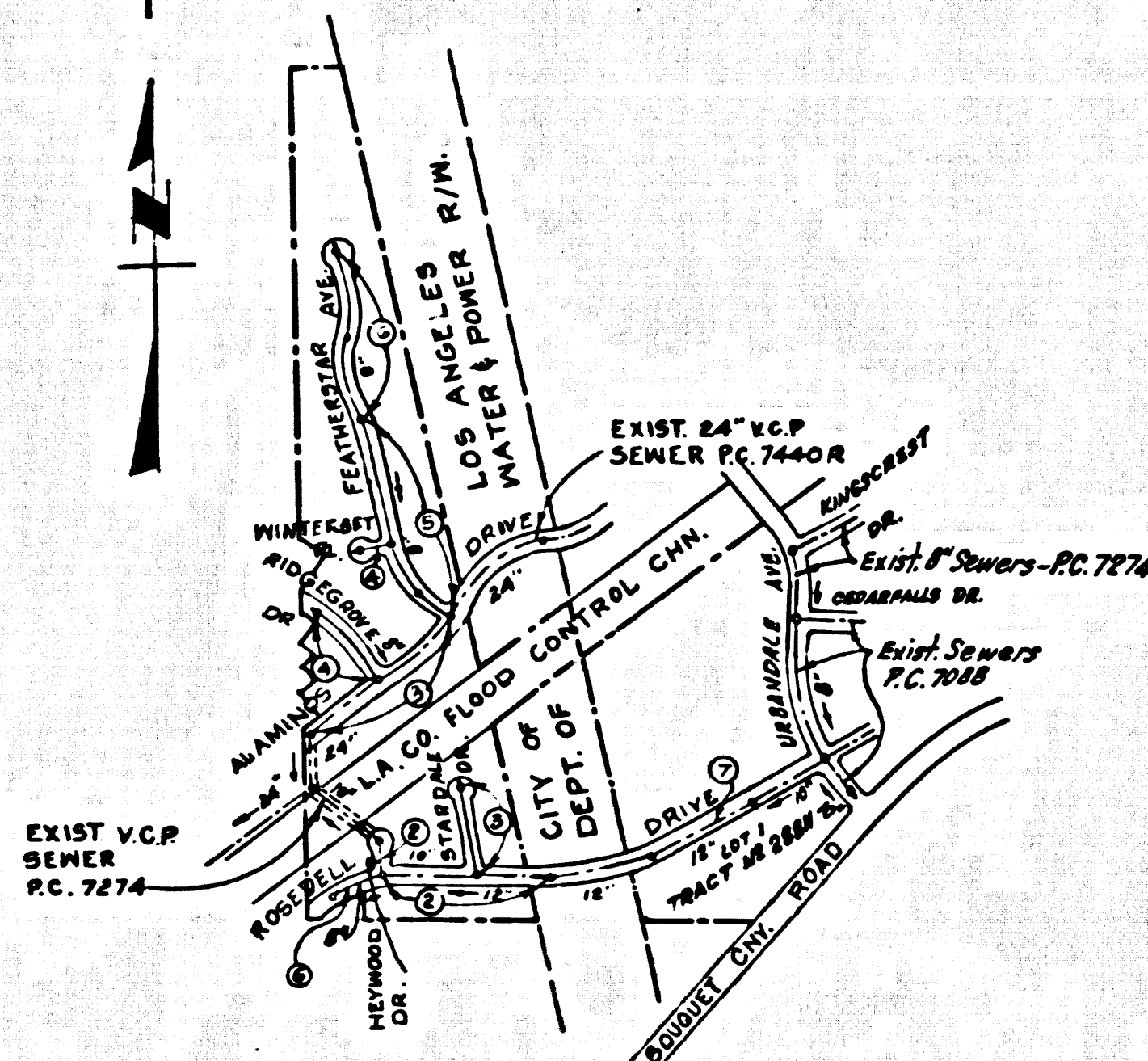
CHECKED BY *Ralph Schaper* 9/15/66
 REG. C. E. NO. 12346

J.N. 0366.57





B.M. 5L-1741 ELEV. 1349.390
 BLBMS V-8 FLOOD CONT. MON.
 FLUSH 27 FT. D.V. & BOUQUET CANYON
 ROAD 175 FT. N.W. OF PLUM
 CANYON ROAD MKD. (144-00800 1963)
 NEWHALL QUAD. 19 55



INDEX MAP
 TRACT No. 29463
 P.C. No. 7495
 SCALE 1" = 600'

NOTE: NUMBERS IN CIRCLES INDICATE PAGE NUMBERS.

DOUBLE SCALE
 NEWHALL BLDG. DIST. NO. 8.2

PROFILE, ALIGNMENT AND GRADE OF
 SANITARY SEWERS PAGE 1

TO BE CONSTRUCTED IN
 TRACT No. 29463

PRIVATE CONTRACT NO. 7495

W.S. G2
 4 SHEETS, 7 PAGES
 SCALE: HORIZ. 1" = 40' VERT. 1" = 4'
 MAY 1966
 PREPARED IN THE OFFICES OF
 MONTIURE & QUIROS INC.
 BY: *[Signature]*
 REG. C. E. NO. 14297

39090

FOR LEGEND SEE PLAN NO. S-1

- NOTES:
1. HOUSE STAGES ON THE PROPERTY LINE OR PROPERTY LINES PRODUCED AT RIGHT ANGLES TO THE SEWER LINE AT THE CENTER LINE OF EACH MANHOLE.
 2. NO REPRESENTATIVE OF THE COUNTY ENGINEER WILL SURVEY OR LAY OUT ANY PORTION OF THE WORK.
 3. THE PRIVATE ENGINEER SHALL FURNISH THE COUNTY ENGINEER WITH GRADE SHEETS AND STATIONING FOR ALL HOUSE LATERALS AND "Y" BRANCHES AND SHALL PROVIDE STAKES FOR THEM AT THEIR PROPER LOCATIONS WITH STATIONING PLAINLY MARKED. ALL HOUSE LATERALS SHALL BE CONSTRUCTED IN A STRAIGHT ALIGNMENT AT RIGHT ANGLES FROM THE MAIN LINE SEWER EXCEPT AS SHOWN ON THE PLANS. HOUSE LATERALS FROM CHIMNEYS SHALL NOT HAVE AN ANGLE OF LESS THAN 45° WITH THE MAIN LINE SEWER. ANY CHANGE IN ALIGNMENT SHALL BE REQUESTED IN WRITING BY THE PRIVATE ENGINEER.
 4. THE PRIVATE ENGINEER SHALL FURNISH THE HOUSE LATERAL DEPTH AT THE PROPERTY LINE BELOW THE TOP OF CURB ELEVATION FOR EACH HOUSE LATERAL ON THE GRADE SHEET.
 5. NO REVISIONS SHALL BE MADE IN THESE PLANS WITHOUT THE APPROVAL OF THE COUNTY ENGINEER.
 6. THE CONTRACTOR SHALL NOTIFY THE CONSTRUCTION DIVISION BY TELEPHONE, MADISON 9-2747, EXT. 1158, AT LEAST TWENTY-FOUR HOURS BEFORE STARTING ANY WORK UNDER THIS CONTRACT.
 7. MANHOLES SHALL BE BRICK SEWER STRUCTURES PER S-3. PRECAST CONCRETE MANHOLES PER S-23 OR S-4 MAY BE USED AS AN ALTERNATE IN LOCATIONS APPROVED BY THE COUNTY ENGINEER.
 8. USE STANDARD MANHOLE FRAMES AND COVERS, S-15, EXCEPT AS NOTED.
 9. MANHOLE TOPS IN UNIMPROVED RIGHTS-OF-WAY TO BE SIX INCHES ABOVE FINISHED GRADE.
 10. USE EXTRA STRENGTH PIPE. ALL PIPE IS STANDARD DEPTH EXCEPT AS NOTED.
 11. USE MECHANICAL JOINTS FOR ALL V.C.P. JOINTS PER SPEC., SECS. 36, 40 & 41.
 12. IF A POWER POLE IS WITHIN THREE FEET OF THE SEWER, THE SEWER SHALL BE ENCASED, PER S-23, TWO FEET ON EACH SIDE FROM THE POINT OF INTERFERENCE.
 13. IF DURING THE COURSE OF CONSTRUCTION IT IS DETERMINED THAT THERE IS LESS THAN FOUR FEET OF COVER OVER THE TOP OF A MAIN LINE OR HOUSE LATERAL V.C.P. SEWER WHICH IS NOT INDICATED ON THE PLANS, THE PIPE SHALL BE ENCASED PER S-23, UNLESS OTHERWISE APPROVED BY THE COUNTY ENGINEER.
 14. HOUSE LATERALS TO BE CONSTRUCTED WITH INVERTS AT PROPERTY LINE 6 FEET BELOW CURB GRADE EXCEPT AS NOTED.
 15. RESURFACE ALL TRENCHES WITHIN PAVED AREAS TO MEET L.A. COUNTY ROAD DEPT. OR CALIFORNIA STATE HIGHWAY REQUIREMENTS IN ACCORDANCE WITH PERMITS.
 16. FOR ALLOWABLE USAGE TEST USE FORMULA NO. 2, SPEC. SEC. 54.
 17. ALL STATE AND LOCAL TRAFFIC SAFETY ORDERS WILL BE STRICTLY ENFORCED.
 18. ADJUST ALL EXISTING MANHOLE TOPS TO FINISHED ROAD GRADE.
 19. CONSTRUCTION IN FILLED AREAS
 20. AN ACCEPTABLE CERTIFICATION OF COMPACTION TEST RESULTS SHALL BE SUBMITTED TO THE CONSTRUCTION DIVISION. COMPACTION TESTS ARE TO BE MADE IN ACCORDANCE WITH ASTM STANDARD METHOD OF TEST D-698-62
 21. NO CONSTRUCTION IS PERMITTED IN FILLED AREAS WHERE THE RELATIVE DENSITY OF COMPACTION IS LESS THAN 80%.
 22. IF THE RELATIVE DENSITY OF COMPACTION IS LESS THAN 80%, ALL MAIN LINE AND HOUSE LATERALS SHALL BE GRADED PER S-23 OR HAVE A SPECIAL AGGREGATE BASE PER S-21, CASE II. SPECIAL MANHOLE BASES PER S-21 ARE REQUIRED.
 23. IF THE RELATIVE DENSITY OF COMPACTION IS 30% OR GREATER, THE SPECIAL PROVISIONS IN S-23 ARE NOT REQUIRED.

REVISION: AUGUST, 1967
 PAGE 7 (VIEWS A, B & C) - PAGE 7 REDRAWN - VIEWS B & C DELETED. LOTS AND STREETS SOUTH OF ROSEDELL DR. REVERTED TO AGENCIES BY TRACT NO. 29463. 3000 LOT. TRACT NO. 29463 AS NEW LEGAL DESCRIPTION. REVISE INDEX MAP. PLUS WALLETS FROM SOUTH IN MANHOLES TO ROSEDELL DR. AT STA. 1247.00 (NEAREST DR.) AND STA. 1256.50 (EASTSIDE DR.) AND ABANDON SEWERS PER SPEC. SEC. 60 IN BOTH STREETS.
 APPROVED: *[Signature]*
 OFFICE OF COUNTY ENGINEER

Any connection to the sewage system of County Sanitation District, provided directly or indirectly by the sewers shown on these plans, shall be considered a temporary connection until all area sewered is annexed to said districts at which time the connection shall become permanent. If for any reason the annexation to the district of any area sewered hereunder is not completed, the property not in the district will be required to disconnect unless a contract is entered into with the district providing for the disposal of sewage from the area.

COLLECT CHARGES AS INDICATED
Ralph Schafke

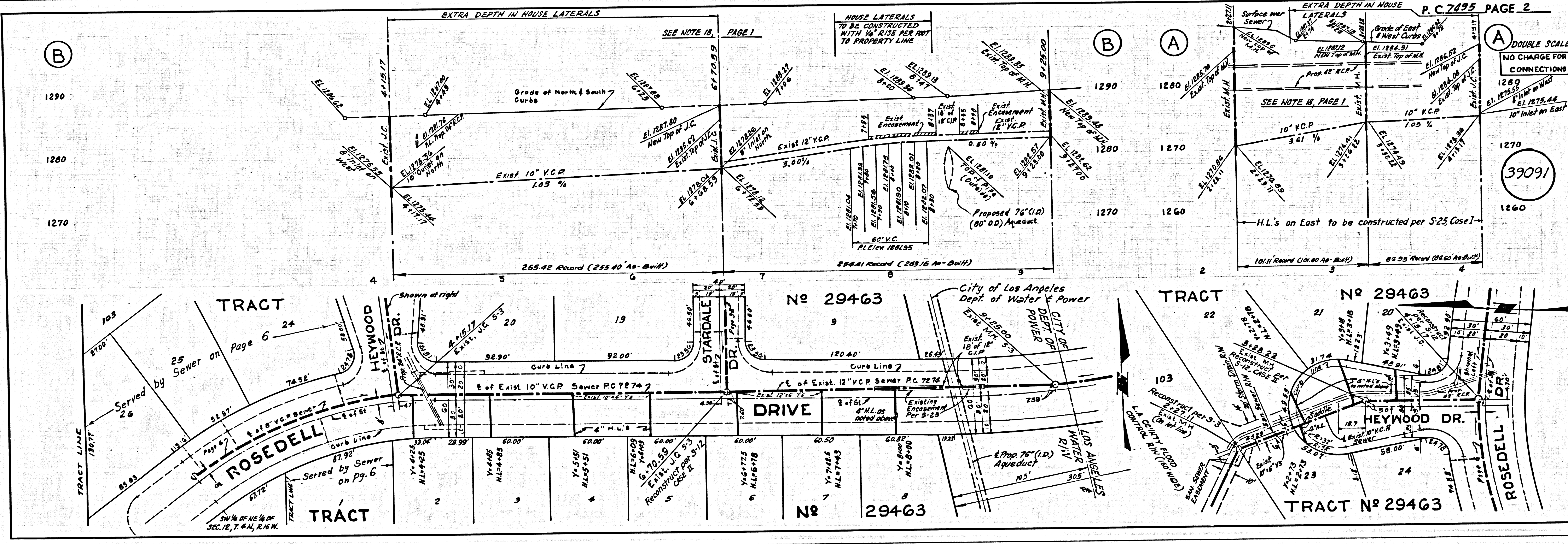
NO CONNECTIONS FOR THE DISPOSAL OF INDUSTRIAL WASTES SHALL BE MADE TO SEWERS SHOWN ON THESE DRAWINGS WITHOUT WRITTEN PERMISSION FROM THE CHIEF ENGINEER AND GENERAL MANAGER OF THE COUNTY SANITATION DISTRICTS.

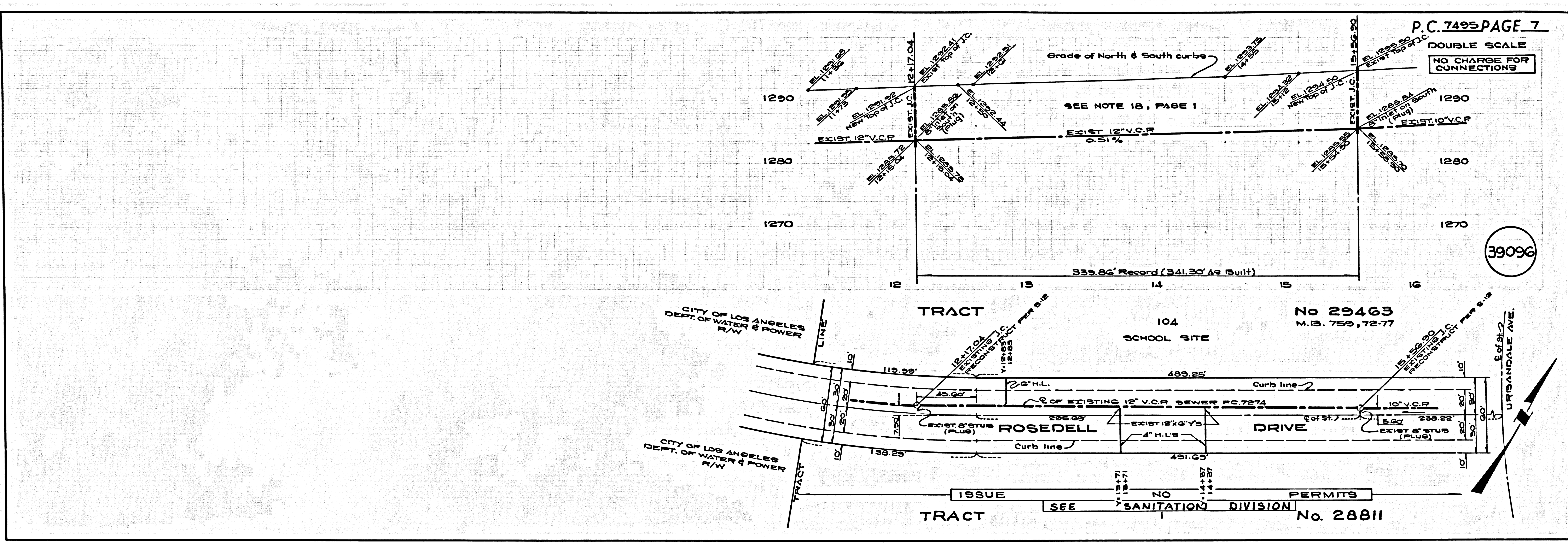
NOTE: GRADES TO WHICH THIS IMPROVEMENT IS TO BE CONSTRUCTED ARE SHOWN ON PLANS AND PROFILES. GRADE POINTS FOR TOP OF CURBS, CENTER LINE OF STREETS, OR CENTER LINE OF ALLEYS ARE SHOWN BY CIRCLES ON PROFILES. AT ALL POINTS BETWEEN DESIGNATED POINTS THE GRADE SHALL BE ESTABLISHED AS TO CORRESPOND TO A STRAIGHT LINE DRAWN BETWEEN SAID DESIGNATED POINTS. ELEVATIONS ARE IN FEET ABOVE U.S.C. & G.S. MEAN SEA LEVEL DATUM OF 1929. THIS DRAWING AND THE DATA HEREON ARE HEREBY MADE A PART OF THE SPECIFICATIONS. AS REVISED. WORK SHALL BE CONSTRUCTED ACCORDING TO STANDARD SPECIFICATIONS DATED 1/22/62, ON FILE IN THE OFFICE OF THE COUNTY ENGINEER AND SHALL BE MODIFIED ONLY IN THE PRESENCE OF THE COUNTY ENGINEER. NO WORK CAN BE STARTED, THE CONTRACTOR MUST OBTAIN A PERMIT TO EXCAVATE IN COUNTY RIGHTS FROM THE L.A. COUNTY PUBLIC UTILITY DISTRICT OFFICE NO. 1447-11-11. REGIONAL OFFICE, SUFFICIENT TO COVER THE COST OF CONSTRUCTION INSPECTION AND RECORD PLANS. APPROVAL OF THIS PLAN BY THE COUNTY OF LOS ANGELES DOES NOT CONSTITUTE A REPRESENTATION AS TO THE ACCURACY OF THE LOCATION OR OF THE EXISTENCE OR NON-EXISTENCE OF ANY UNDERGROUND STREET PIPE, OR STRUCTURE WITHIN THE LIMITS OF THE PROJECT. THIS NOTE APPLIES TO ALL PAGES. THIS PLAN IS TO BE SOON IN A STATE HIGHWAY. A PERMIT MUST BE OBTAINED FROM THE STATE OF CALIFORNIA, DIVISION OF HIGHWAYS, 130 SOUTH STRENGTH STREET, LOS ANGELES, CALIFORNIA.

COUNTY OF LOS ANGELES, CALIFORNIA
 JOHN A. LAMBIE, COUNTY ENGINEER J. D. PARKHURST, CHIEF ENGINEER
 CO. SAN. DIST. NO. 23
 APPROVED BY: *[Signature]* APPROVED BY: *[Signature]*
 SANITATION ENGINEER OFFICE ENGINEER

CHECKED BY: *Ralph Schafke* 9/15/66
 REG. C.E. NO. 17346

J.N. 0366.57





P.C. 7495 PAGE 7

DOUBLE SCALE
NO CHARGE FOR CONNECTIONS

P.C. PAGE