

DOUBLE SCALE  
LOMITA BLDG. DIST. NO. 12

PROFILE ALIGNMENT AND GRADE OF  
SANITARY SEWERS PAGE 1  
TO BE CONSTRUCTED IN

TRACT No 30383  
PRIVATE CONTRACT NO. 7498

W.S. 27  
3 SHEETS, 5 PAGES  
SCALE: VERT. 1"=4'  
HORIZ. 1"=40'  
October, 1965

38563

PREPARED IN THE OFFICES OF  
DEVELOPMENT CONSULTANTS INC.  
ENGINEERING DIVISION  
100 EAST COLORADO BLVD., PASADENA, CALIF.  
By: *J. J. Shand*  
REG. C. E. NO. 2252

FOR LEGEND SEE PLAN NO. S-64

NOTE: GRADES TO WHICH THIS IMPROVEMENT IS TO BE CONSTRUCTED ARE SHOWN ON PLANS AND PROFILES. GRADE POINTS FOR TOP OF CURBS, CENTER LINE OF STREETS, OR CENTER LINE OF ALLEYS ARE SHOWN BY CIRCLES ON PROFILES. AT ALL POINTS BETWEEN DESIGNATED POINTS THE GRADE SHALL BE ESTABLISHED SO AS TO CONFORM TO A STRAIGHT LINE DRAWN BETWEEN SAID DESIGNATED POINTS. ELEVATIONS ARE IN FEET ABOVE U.S.C. & G.S. MEAN LEVEL DATUM OF 1929. THIS DRAWING AND THE DATA HEREON ARE HEREBY MADE A PART OF THE SPECIFICATIONS. THE WORK SHALL BE CONSTRUCTED ACCORDING TO STANDARD SPECIFICATIONS DATED JULY 26, 1962, ON FILE IN THE OFFICE OF THE COUNTY ENGINEER AND SHALL BE PROSECUTED QUIN IN THE PRESENCE OF THE COUNTY ENGINEER. BEFORE WORK CAN BE STARTED, THE CONTRACTOR MUST OBTAIN A PERMIT TO LOCATE IN COUNTY STREETS FROM THE L.A. COUNTY ROAD DEPT., DISTRICT OFFICE NO. 3, AND PAY A FEE TO THE COUNTY ENGINEER, ROOM 330, COUNTY ENGINEERING BUILDING, 500 WEST SECOND STREET OR PALOS VERDES REGIONAL OFFICE, SHERBORN TO COVER THE COST OF CONSTRUCTION INSPECTION AND RECORD PLANS. APPROVAL OF THIS PLAN BY THE COUNTY OF LOS ANGELES DOES NOT CONSTITUTE A REPRESENTATION AS TO THE ACCURACY OF THE LOCATION OF OR THE EXISTENCE OR NON-EXISTENCE OF ANY UNDERGROUND UTILITY PIPE, OR STRUCTURE WITHIN THE LIMITS OF THE PROJECT. THIS NOTE APPLIES TO ALL PAGES. IF WORK IS TO BE DONE IN A STATE HIGHWAY, A PERMIT MUST BE OBTAINED FROM THE STATE OF CALIFORNIA, DIVISION OF HIGHWAYS, 120 SOUTH SPRING STREET, LOS ANGELES, CALIFORNIA.

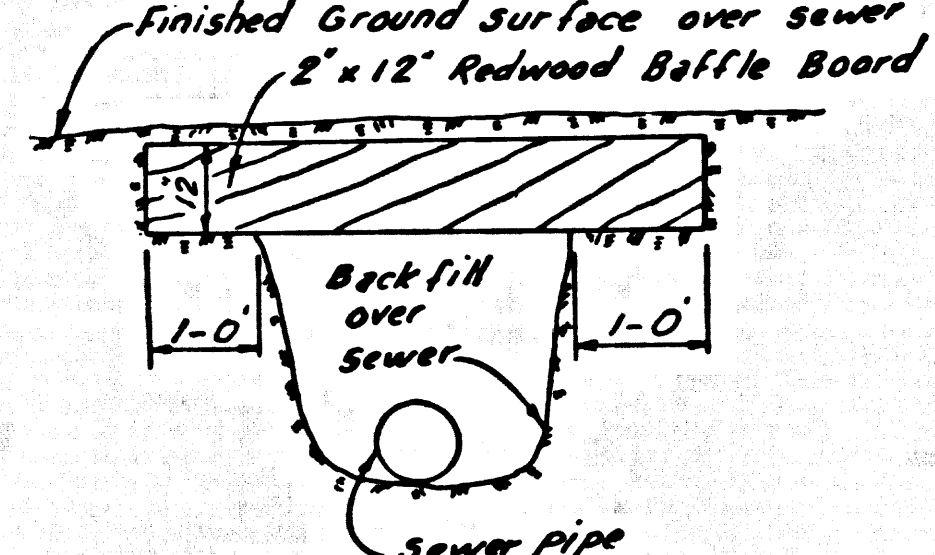
COUNTY OF LOS ANGELES, CALIFORNIA  
JOHN A. LAMBIE, COUNTY ENGINEER  
APPROVED BY: *[Signature]*  
ASSISTANT SANITATION ENGINEER

CHECKED BY: *[Signature]*  
REG. C. E. NO. 12623

J.N. 0366.60

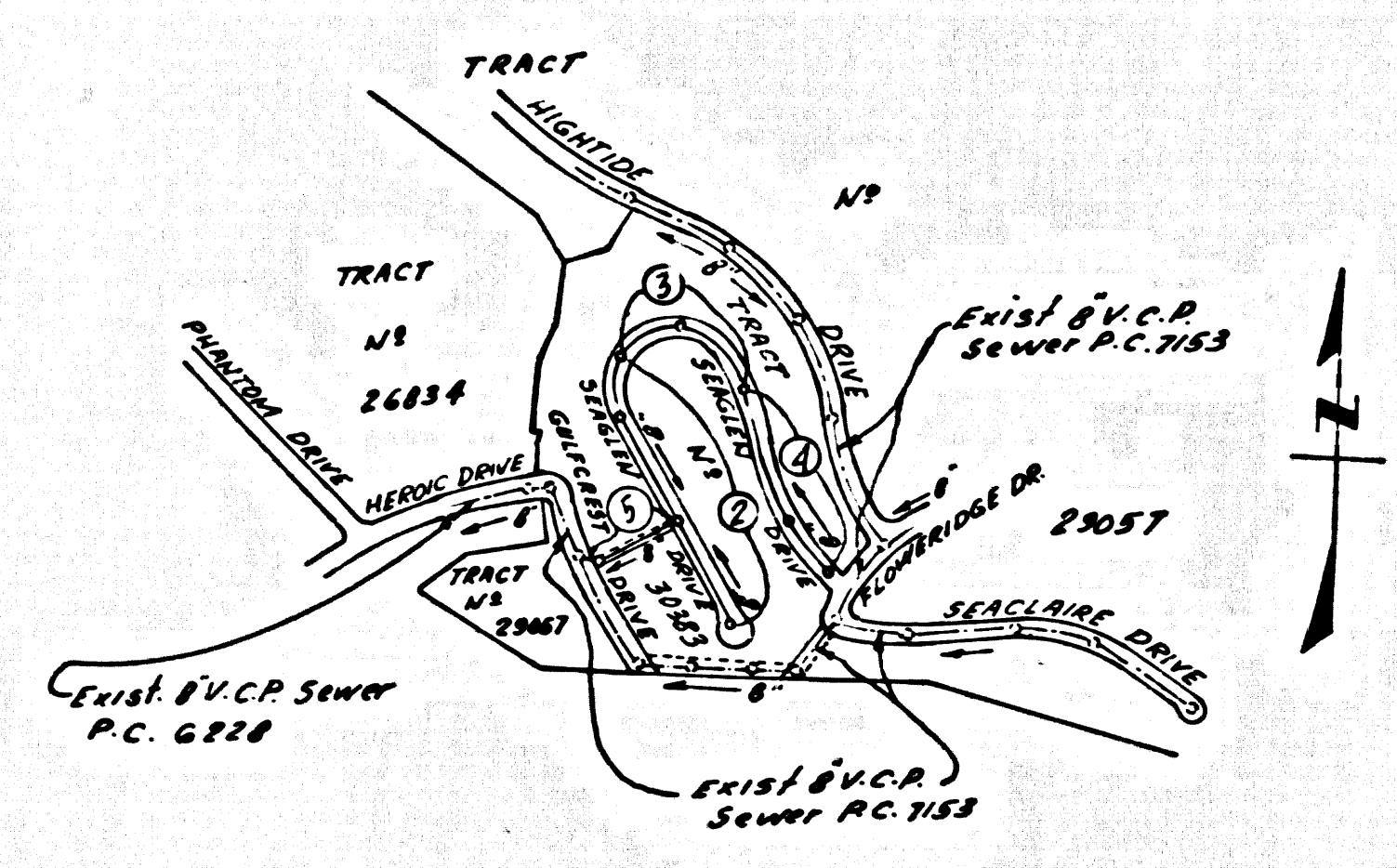
B.M. 57 6003 ELEV. 916.680  
R.D. B.M. Top N. Ch 1/2 E. B.C.R. of N.E.  
Cor. Palos Verdes Drive East of Casilina  
Drive 40' N., 55' E. & Int. Section.  
PALOS VERDES QUAD. 19 60

2" x 12" REDWOOD BAFFLE BOARD DETAIL



- 1 Each end of baffle board will extend one foot into undisturbed ground.
- 2 Baffles will be so spaced that the top of the lower baffle shall be level with the bottom of the upper.
- 3 The upper layer of backfill to be 1 foot min. of top soil. Top soil shall be tamped in place and planted with mustard weed seed and adequately watered until growth is restored.

NOTE: Lots 1-17 of this tract are served by sewer in NIGHTIDE DRIVE, P.C. 7153 page 20 & Lot 50 served from P.C. 7153, page 12A



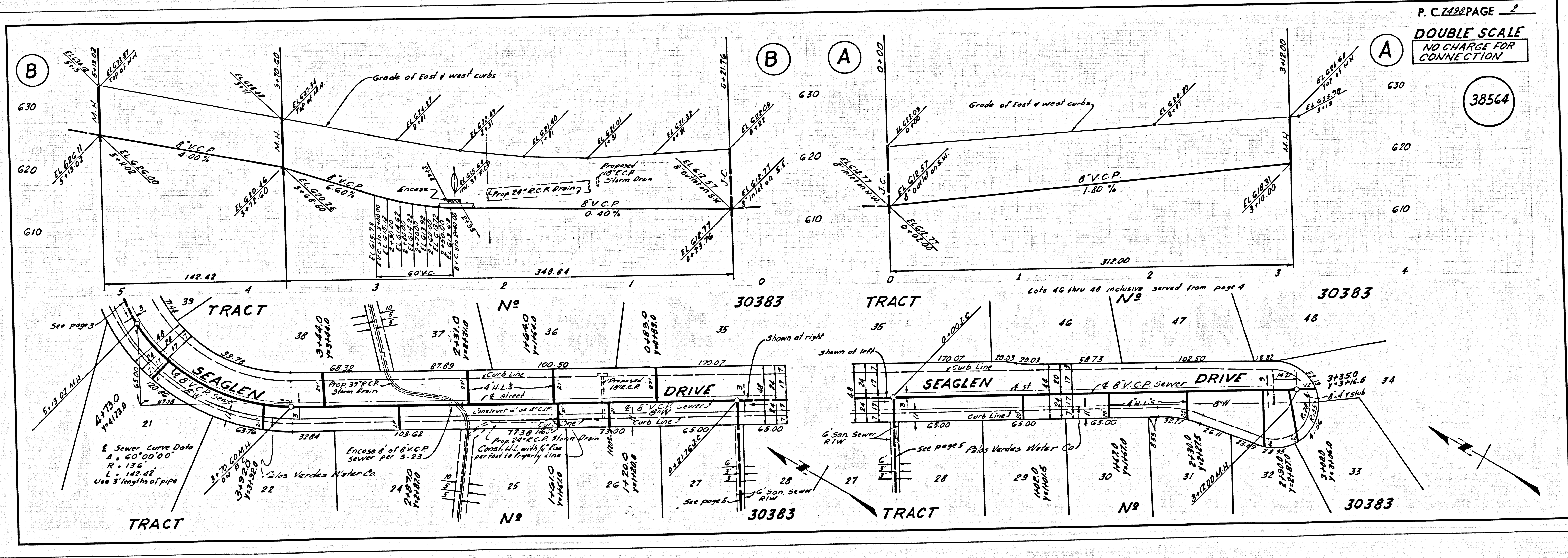
INDEX MAP

TRACT No 30383  
P.C. No 7498  
Scale 1"=600'

Note: Where stations are shown at the end of sewer lines, the locations of such house laterals shall not be moved up grade from the stations indicated.

COLLECT CHARGES AS INDICATED

NO CONNECTIONS FOR THE DISPOSAL OF INDUSTRIAL WASTES SHALL BE MADE TO SEWERS SHOWN ON THESE DRAWINGS WITHOUT WRITTEN PERMISSION FROM THE CHIEF ENGINEER AND GENERAL MANAGER OF THE COUNTY SANITATION DISTRICTS.



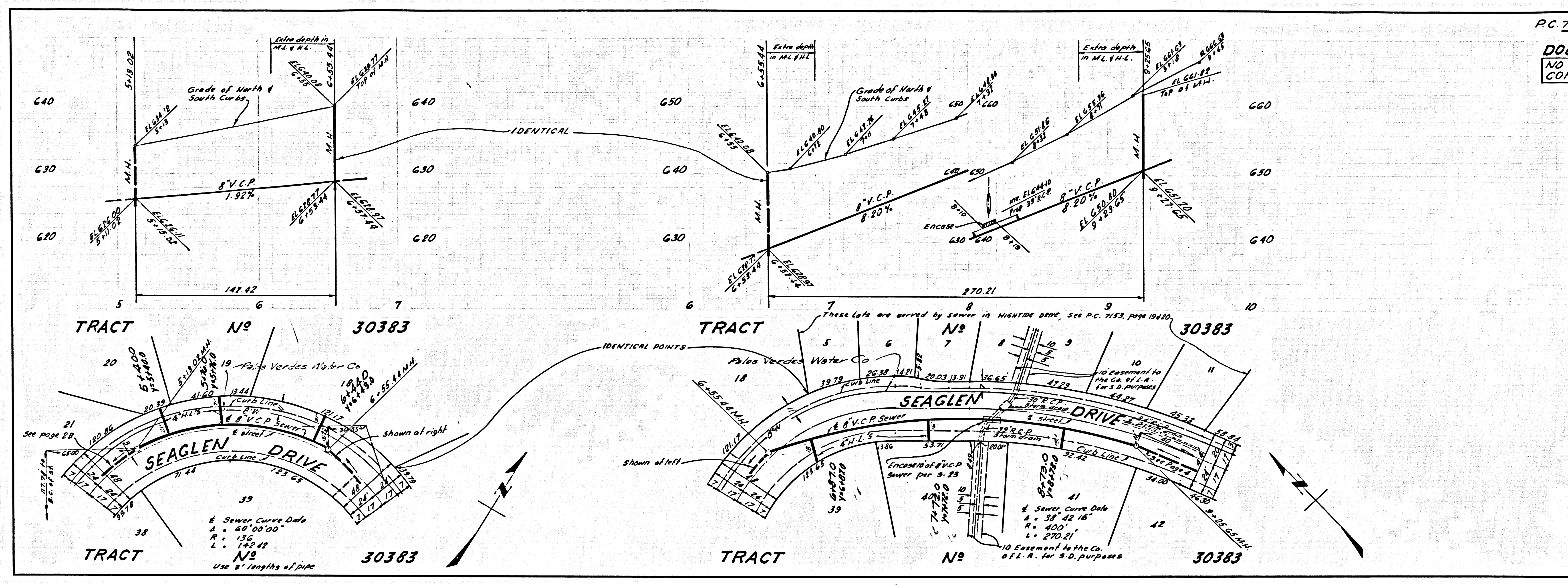
P. C. 7498 PAGE 2  
DOUBLE SCALE  
NO CHARGE FOR CONNECTION

38564



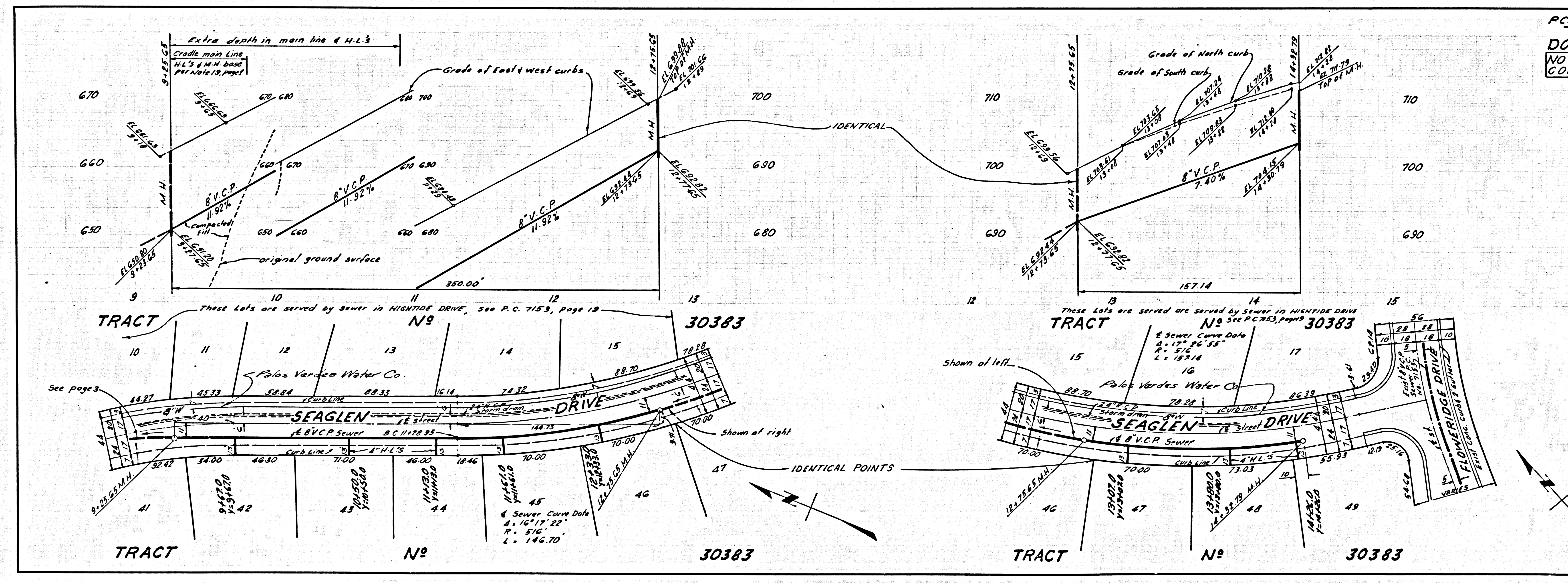
DOUBLE SCALE  
NO CHARGE FOR  
CONNECTIONS

38565



DOUBLE SCALE  
NO CHARGE FOR  
CONNECTIONS

38566





DOUBLE SCALE  
NO CHARGE FOR  
CONNECTIONS

38567

