

B.M. 54 1481 ELEV. 57.058
 Spike & Lead in Center Concrete
 Wooded 11' 15" South of E. Artesia
 Blvd. & 100' West of House N 11704
 Artesia Blvd.
 ARTESIA QUAD. 1950

REVISED - 5-15-69
 CHANGED V.C.P. TO C.P. @ STA. 50+00
 TO STA. 6+08.00
 BY: *Don M. Lander* MAY 13, 1969
 DON M. LANDER - REG. # 12795
 APPRO'D: *Quill & McCalla* 5/16/69

ARTESIA BLDG. DIST. NO. 4.09

PROFILE ALIGNMENT AND GRADE OF P.C. 7502
 SANITARY SEWERS PAGE 1
 TO BE CONSTRUCTED IN
 TRACT NO. 28874

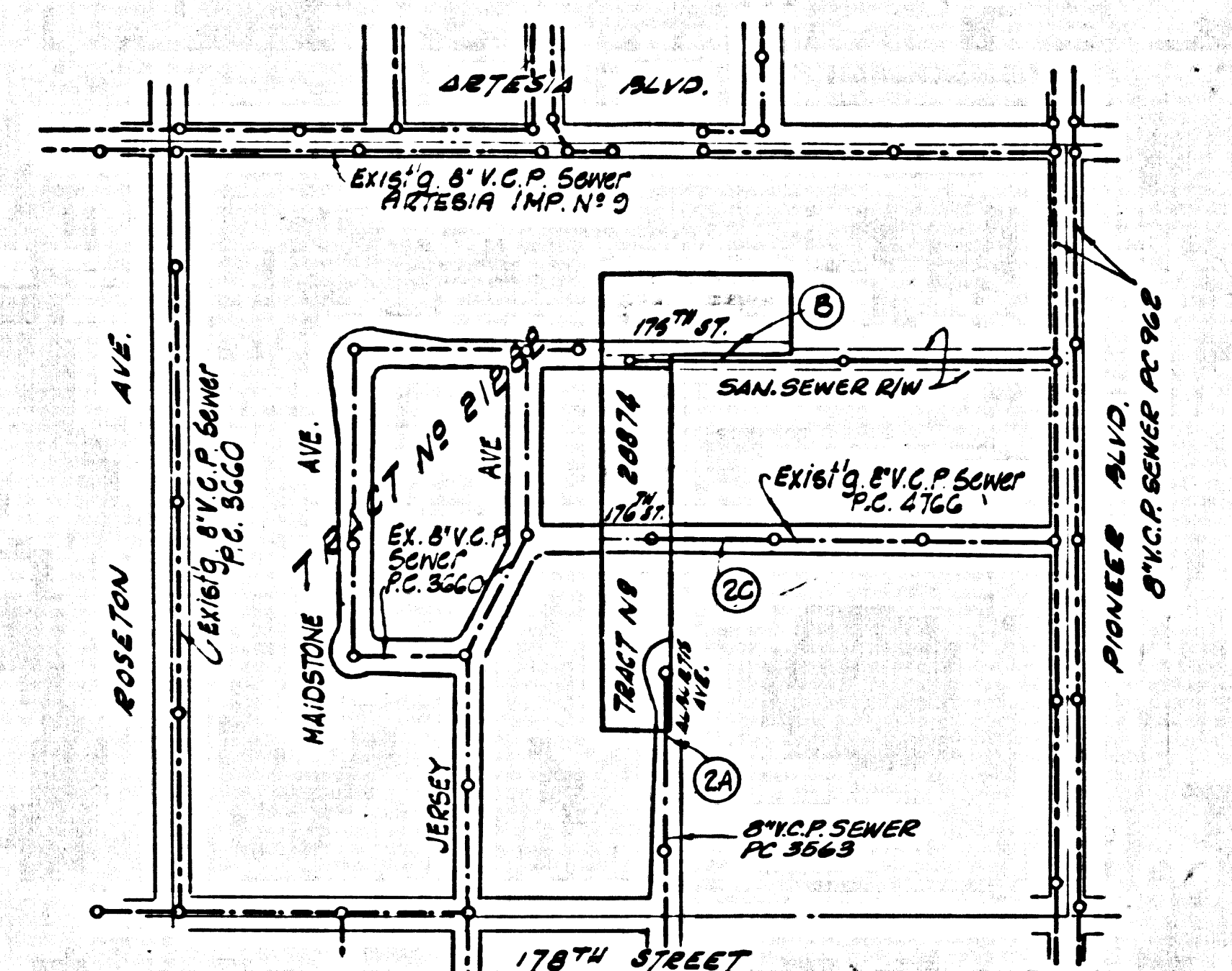
PRIVATE CONTRACT NO. 7502

W.S. 33
 2 SHEETS, 5 PAGES
 SCALE: VERT. 1"=4' HORIZ. 1"=40'
 MAY, 1964
 PREPARED IN THE OFFICES OF
 LANDES ENGINEERING
 1788 WEST LINCOLN AVE.
 ALHAMBRA, CALIFORNIA 91704
 BY: *Don M. Lander*
 REG. C.E. NO. 12795
 FOR LEGEND SEE PLAN NO. 5-1

41223

THE FOLLOWING CITY ENGINEER STANDARD PLANS APPLY TO THIS PROJECT.

- LEGEND 5-1
- MINIMUM EXCAVATION SAFETY REQUIREMENTS 5-2
- BRICK MANHOLE 5-5
- NON-REINFORCED PRECAST CONCRETE MANHOLE 5-5
- REINFORCED CONCRETE MANHOLE 5-6
- NEW CONNECTION TO EXISTING BRICK MANHOLE 5-15
- MANHOLE FRAME & COVER 5-16
- STANDARD MANHOLE STEP 5-17
- TEMPORARY SAND TRAP 5-20
- BEDDING FOR SEWER PIPE 5-21
- SPECIAL SUPPORT AND PROTECTION 5-22
- CRACKING AND ENCASUREMENT 5-23
- SPECIAL HOUSER LATERALS 5-25
- WYE SUPPORT 5-28
- STOPPER 5-30
- ALLOWABLE TRENCH WIDTHS 5-33



P.C. 7502
 INDEX MAP
 TRACT NO. 28874
 SCALE: 1"=200'

- NOTES:
- PROVIDE STAKES ON THE PROPERTY LINE OR PROPERTY LINES PRODUCED AT RIGHT ANGLES TO THE SEWER LINE AT THE CENTER LINE OF EACH MANHOLE.
 - NO REPRESENTATIVE OF THE CITY ENGINEER WILL SURVEY OR LAY OUT ANY PORTION OF THE WORK.
 - THE PRIVATE ENGINEER SHALL FURNISH THE CITY ENGINEER WITH GRADE SHEETS AND STATIONING FOR ALL HOUSE LATERALS AND "T" OR "Y" BRANCHES AND SHALL PROVIDE STAKES FOR THEM AT THEIR PROPER LOCATIONS WITH STATIONING PLAINLY MARKED. ALL HOUSE LATERALS SHALL BE CONSTRUCTED IN A STRAIGHT ALIGNMENT AT RIGHT ANGLES FROM THE MAIN LINE SEWER EXCEPT AS SHOWN ON THE PLANS. HOUSE LATERALS FROM CHIMNEYS SHALL NOT HAVE AN ANGLE OF LESS THAN 45° WITH THE MAIN LINE SEWER. ANY CHANGE IN ALIGNMENT SHALL BE INDICATED IN WRITING BY THE PRIVATE ENGINEER.
 - THE PRIVATE ENGINEER SHALL FURNISH THE HOUSE LATERAL DEPTH AT THE PROPERTY LINE BELOW THE TOP OF CURB ELEVATION FOR EACH HOUSE LATERAL ON THE GRADE SHEET.
 - NO REVISIONS SHALL BE MADE IN THESE PLANS WITHOUT THE APPROVAL OF THE CITY ENGINEER.
 - THE CONTRACTOR SHALL NOTIFY THE CONSTRUCTION DIVISION BY TELEPHONE, MADISON 9-4747, EXT. 8158, AT LEAST TWENTY-FOUR HOURS BEFORE STARTING ANY WORK UNDER THE CONTRACT.
 - MANHOLES SHALL BE EITHER BRICK SEWER STREET PIPES OR PRECAST CONCRETE MANHOLES PER 5-5 OR 5-6, EXCEPT AS NOTED.
 - USE STANDARD MANHOLE FRAMES AND COVERS, 5-15.
 - "T" OR "Y" BRANCHES MAY BE USED FOR CONNECTIONS TO MAIN LINE SEWERS.
 - USE STEEL STRENGTH PIPE, ALL PIPE IS STANDARD WEIGHT.
 - USE TYPE D, E, OR G MECHANICAL JOINTS FOR ALL V.C.P. JOINTS PER STD. SPEC'S, SEC. 208-2.
 - REFER TO SECTION 7-10.41 OF THE STANDARD SPECIFICATIONS REGARDING SAFETY ORDERS.
 - IF A POWER POLE IS WITHIN THREE FEET OF THE SEWER, THE SEWER SHALL BE ENCASED, PER 5-23, TWO FEET ON EACH SIDE FROM THE POINT OF INTERFERENCE.
 - IF DURING THE COURSE OF CONSTRUCTION IT IS DETERMINED THAT THERE IS LESS THAN FOUR FEET OF COVER OVER THE TOP OF A MAIN LINE OR HOUSE LATERAL V.C.P. SEWER WHICH IS NOT INDICATED ON THE PLANS, THE PIPE SHALL BE ENCASED PER 5-23, CASE 2, UNLESS OTHERWISE APPROVED BY THE CITY ENGINEER.
 - LAY ALL 18" HORIZONTAL AND CONCRETE HOUSE LATERALS AT 1/4" SLOPE PER FOOT TO THE PROPERTY LINE.
 - RESURFACE ALL FINISHED DRIVEWAYS TO MEET L.A. COUNTY ROAD DEPT. OR CALIFORNIA STATE HIGHWAY REQUIREMENTS IN ACCORDANCE WITH PERMITS.
 - FOR ALLOWABLE LEAKAGE TEST USE SECTION 306-2.3.7 OF STANDARD SPECIFICATIONS.
 - ALL JOINTS BETWEEN CAST IRON PIPE AND VITRIFIED CLAY PIPE SHALL BE MADE WITH A RUBBER SLEEVE JOINT TYPE "C" OR "D" (WITH BUSHINGS IF NECESSARY) PER STANDARD SPECIFICATIONS SECTION 208.2.

County Sanitation Districts shall be notified prior to the following so that required inspections may be made (Phone 897-2058 - 456-3097)

acceptance of the project:

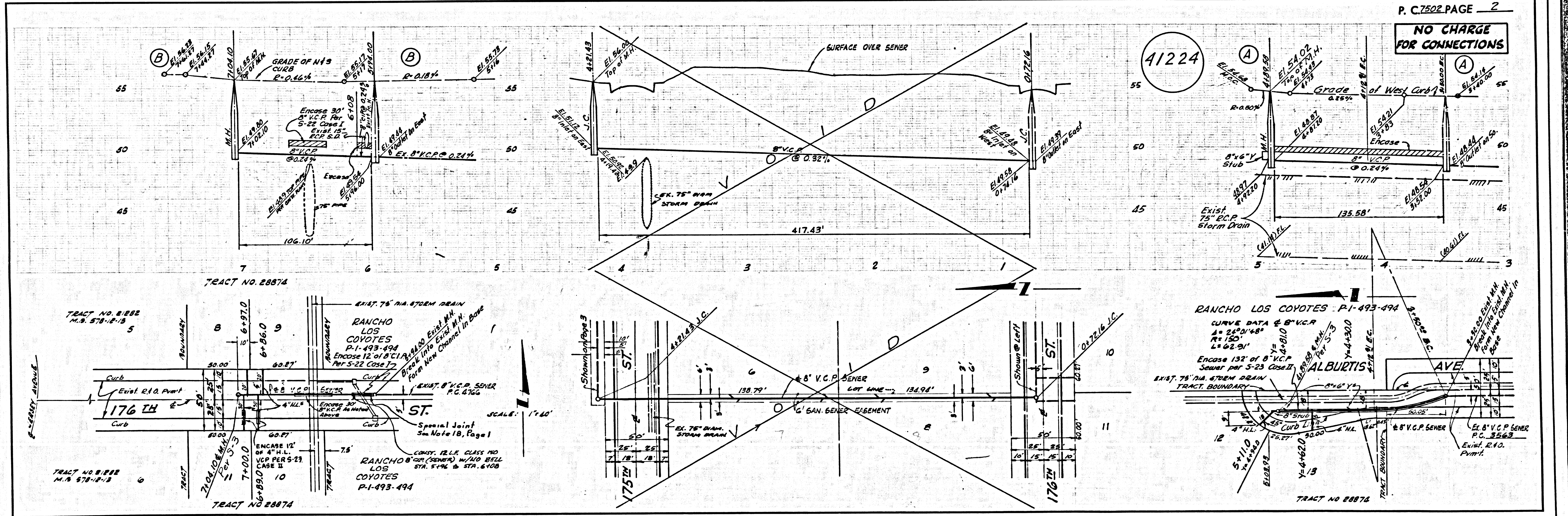
COLLECT CHARGES AS INDICATED

No connections for the disposal of industrial wastes shall be made to sewers shown on these drawings without written permission from the Chief Engineer and General Manager of the County Sanitation Districts.

NOTE:
 GRADES TO WHICH THIS IMPROVEMENT IS TO BE CONSTRUCTED ARE SHOWN ON PLANS AND PROFILE. GRADE POINTS FOR TOP OF CURB, CENTER LINE OF STREETS, OR CENTER LINE OF ALLEYS ARE SHOWN BY CIRCLES ON PROFILES. AT ALL POINTS BETWEEN DESIGNATED POINTS THE GRADE SHALL BE ESTABLISHED SO AS TO CONFORM TO A STRAIGHT LINE DRAWN BETWEEN SAID DESIGNATED POINTS. ELEVATIONS ARE IN FEET ABOVE U.S.C. & G.S. SEA LEVEL DATUM OF 1929.
 THIS DRAWING AND THE DATA HEREON ARE HEREBY MADE A PART OF THE SPECIFICATIONS.
 WORK SHALL BE CONSTRUCTED ACCORDING TO THE STANDARD SPECIFICATIONS FOR PUBLIC WORKS CONSTRUCTION AND CITY ENGINEER'S SPECIAL PROVISIONS ON FILE AT THE OFFICE OF THE CITY ENGINEER AND SHALL BE PROSECUTED ONLY IN THE PRESENCE OF THE CITY ENGINEER OR HIS REPRESENTATIVE. THE CONTRACTOR MUST OBTAIN A PERMIT TO OCCUPY ANY CITY STREET FROM THE L.A. COUNTY ROAD DEPT., DISTRICT OFFICE NO. 1-4-11, AND MAKE A DEPOSIT WITH THE CITY OF ARTESIA, GAS PROVISIONS DIVISION, CONSTRUCTION INSPECTION AND RECORD PLANS, APPROVAL OF THIS PLAN BY THE CITY OF ARTESIA DOES NOT CONSTITUTE A REPRESENTATION AS TO THE ACCURACY OF THE LOCATION OF OR THE EXISTENCE OR NON-EXISTENCE OF ANY UNDERGROUND UTILITY PIPE, OR STRUCTURE WITHIN THE LIMITS OF THIS PROJECT. THIS NOTE APPLIES TO ALL PAGES.
 IF WORK IS TO BE DONE IN A STATE HIGHWAY, A PERMIT MUST BE OBTAINED FROM THE STATE OF CALIFORNIA, DIVISION OF HIGHWAYS, 120 SOUTH SPRING STREET, LOS ANGELES, CALIFORNIA.

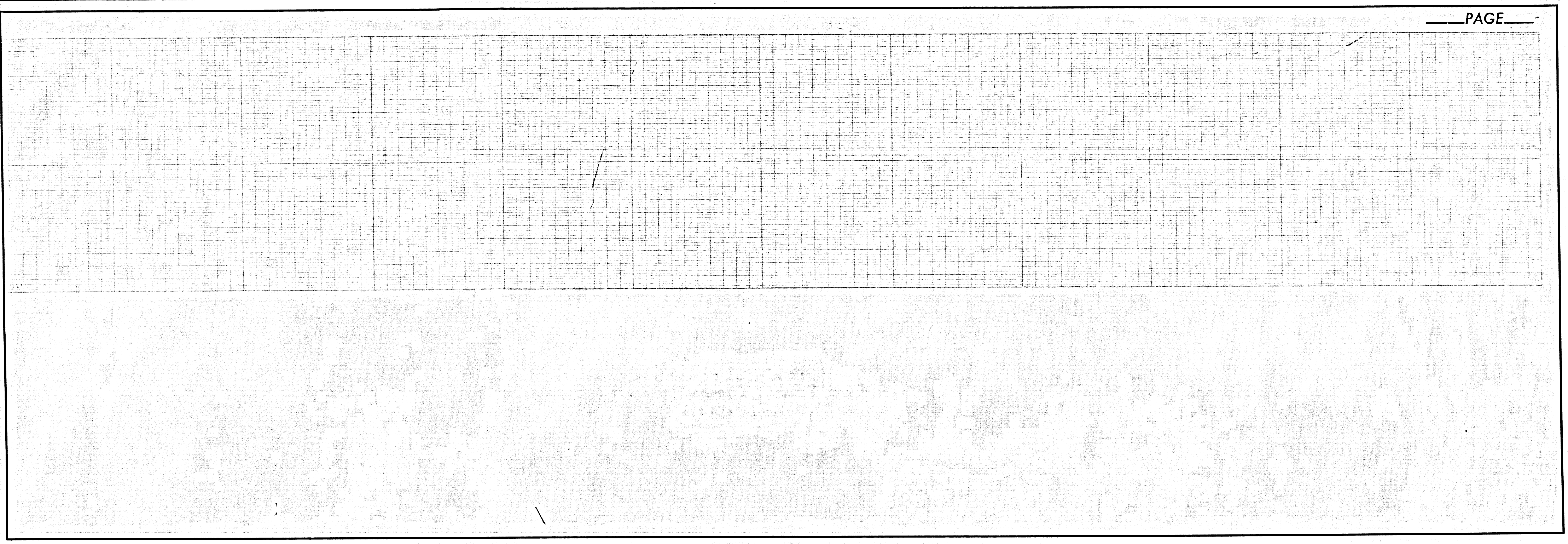
CITY OF ARTESIA, CALIFORNIA
 JOHN A. LAMBE, CITY ENGINEER
 APPROVED BY: *Don M. Lander*
 LOS ANGELES REGIONAL ENGINEER
 J. D. PARKHURST, CHIEF ENGINEER
 CO. SAN. DIST. NO. 2
 APPROVED BY: *Quill & McCalla*
 OFFICE ENGINEER

CHECKED BY: *Quill & McCalla* 4/27/68
 REG. C.E. NO. 15931



41224

NO CHARGE FOR CONNECTIONS



COLLECT CHARGES AS NOTED.

41225

