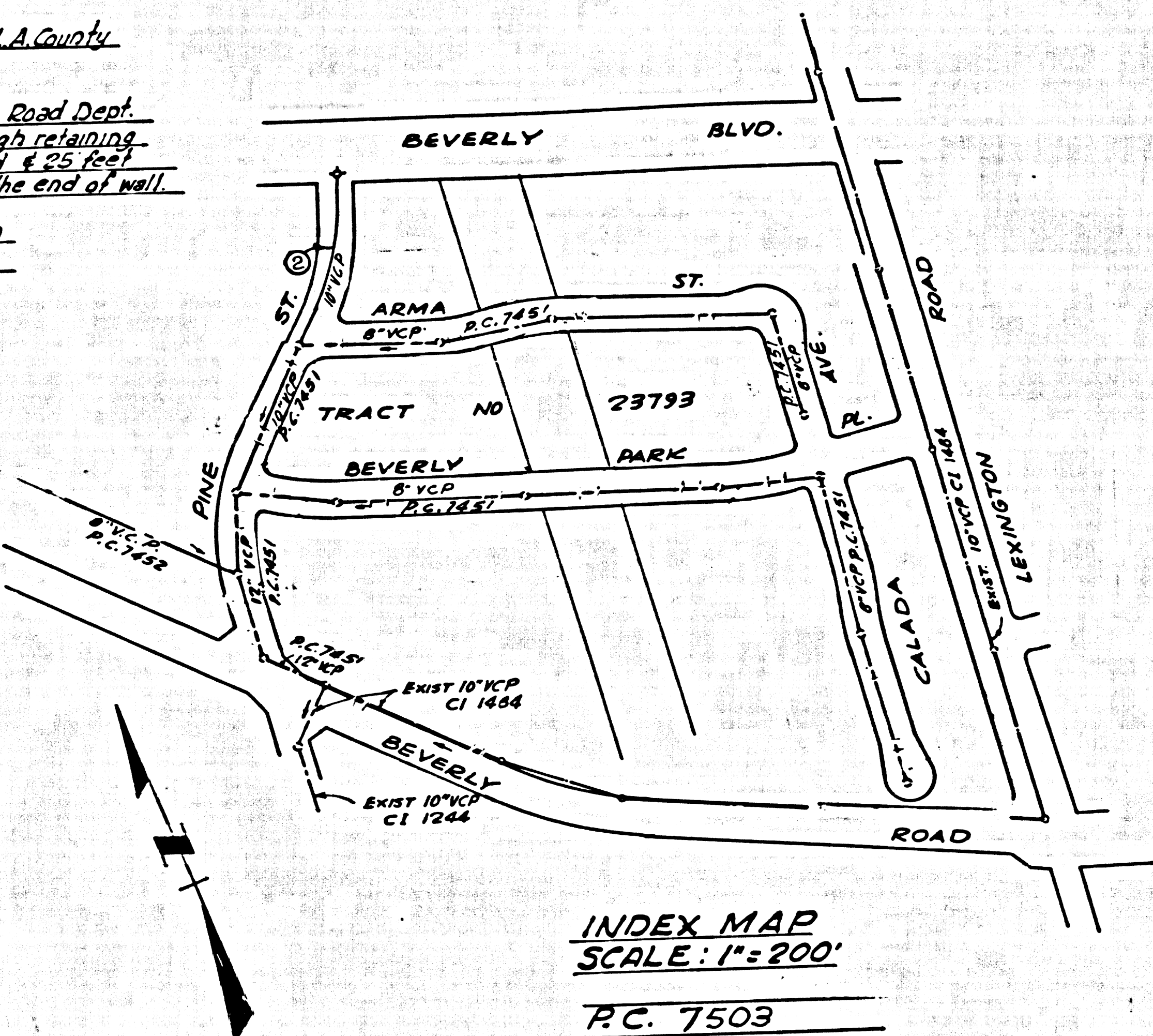


B.M. #2 ELEV. 177.955  
 TOP OF COUNTY SURVEYOR BRASS CAP  
 MARK SET IN CONC. 431' N.W. of the E. of  
 PINE ST. and 50' S.W. of the E. of BEVERLY RD.  
 CO. ENG. R. FA 799 P. 328-336

EQUATION: City of Pico Rivera to L.A. County  
 Road Department.

B.M. SY 3240 Los Angeles Road Dept.  
 L & B in North end of 1' foot high retaining  
 wall 65' feet S. of Beverly Road & 25' feet  
 W. of Pine Street 2' feet So. of the end of wall  
 Rivera Oued. 1960  
 L.A. Co. Rd. Dept. Elev. 179.889  
 City of Pico Rivera Elev. 181.219



PICO RIVERA BLDG. DIST. NO. 1101

- NOTES
- 1 PROVIDE STAKES ON THE PROPERTY LINE OR PROPERTY LINES PRODUCED AT RIGHT ANGLES TO THE SEWER LINE AT THE CENTER LINE OF EACH MANHOLE
  - 2 NO REPRESENTATIVE OF THE CITY ENGINEER WILL SURVEY OR LAY OUT ANY PORTION OF THE WORK
  - 3 THE PRIVATE ENGINEER SHALL FURNISH THE CITY ENGINEER WITH GRADE SHEETS AND STATIONING FOR ALL HOUSE LATERALS AND Y BRANCHES AND SHALL PROVIDE STAKES FOR THEM AT THEIR PROPER LOCATIONS WITH STATIONING PLAINLY LABELED. ALL HOUSE LATERALS SHALL BE CONSTRUCTED IN A STRAIGHT ALIGNMENT AT RIGHT ANGLES FROM THE MAIN LINE SEWER EXCEPT AS SHOWN ON THE PLANS. HOUSE LATERALS FROM CHIMNEYS SHALL NOT HAVE AN ANGLE OF LESS THAN 45° WITH THE MAIN LINE SEWER. ANY CHANGE IN ALIGNMENT SHALL BE REQUESTED IN WRITING BY THE PRIVATE ENGINEER
  - 4 THE PRIVATE ENGINEER SHALL FURNISH THE HOUSE LATERAL DEPTH AT THE PROPERTY LINE BELOW THE TOP OF CURB REVISION OR 6" FOR EACH HOUSE LATERAL ON THE GRADE SHEET
  - 5 NO REVISIONS SHALL BE MADE IN THESE PLANS WITHOUT THE APPROVAL OF THE CITY ENGINEER
  - 6 THE CONTRACTOR SHALL NOTIFY THE CONSTRUCTION DIVISION BY TELEPHONE, MADISON 9 4747, EXT. 8138, AT LEAST TWENTY FOUR HOURS BEFORE STARTING ANY WORK UNDER THIS CONTRACT
  - 7 MANHOLES SHALL BE BRICK SEWER STRUCTURES PER S-1 PRECAST CONCRETE MANHOLES PER S-2 OR S-3 OR S-4 MAY BE USED AS AN ALTERNATE IN LOCATIONS APPROVED BY THE CITY ENGINEER
  - 8 USE STANDARD MANHOLE FRAMES AND COVERS, S-1B EXCEPT AS NOTED
  - 9 MANHOLE TOPS IN UNIMPROVED RIGHTS OF WAY TO BE SIX INCHES ABOVE FINISHED GRADE
  - 10 USE EXTRA STRENGTH PIPE ALL PIPE IS STANDARD DEPTH EXCEPT AS NOTED
  - 11 USE MECHANICAL COMPRESSION JOINTS FOR ALL V.C.P. JOINTS PER SPECS. SECS. 34, 48 & 49
  - 12 IF A POWER POLE IS WITHIN THREE FEET OF THE SEWER THE SEWER SHALL BE ENCASED PER S-23 TWO FEET ON EACH SIDE FROM THE POINT OF INTERFERENCE
  - 13 IF DURING THE COURSE OF CONSTRUCTION IT IS DETERMINED THAT THERE IS LESS THAN FOUR FEET OF COVER OVER THE TOP OF A MAIN LINE OR HOUSE LATERAL V.C.P. SEWER WHICH IS NOT INDICATED ON THE PLANS, THE PIPE SHALL BE ENCASED PER S-23 UNLESS OTHERWISE APPROVED BY THE CITY ENGINEER
  - 14 HOUSE LATERALS TO BE CONSTRUCTED WITH INVERTS AT PROPERTY LINE 6 FEET BELOW CURB GRADE EXCEPT AS NOTED
  - 15 REINFORCE ALL TRENCHES WITHIN FINISHED AREAS TO MEET CITY OF PICO RIVERA OR CALIFORNIA STATE HIGHWAY REQUIREMENTS IN ACCORDANCE WITH PERMITS
  - 16 FOR ALLOWABLE LEAKAGE TEST USE FORMER NO. 2 SPECS. SEC. 54
  - 17 ALL STATE AND LOCAL TRENCH SAFETY ORDERS WILL BE RIGIDLY ENFORCED
  - 18 THE CONTRACTOR SHALL PROVIDE TRAFFIC CONTROL DURING CONSTRUCTION AS A BALANCED WITH THE CITY OF PICO RIVERA BEFORE CONSTRUCTION IS STARTED. HE SHALL ALSO PUT UP BARRIERS WITH THE CITY OF PICO RIVERA SUPERVISOR TO COVER THE COST OF THIS TRAFFIC CONTROL.

NOTE: NO CONNECTIONS TO BE MADE TO THIS SEWER UNTIL R.C. 7451 IS APPROVED.

COLLECT CHARGES AS INDICATED  
 W. Williams, D. Williams

APPROVED P.C. Kramer 2-11-66  
 DIRECTOR OF PUBLIC WORKS  
 CITY OF PICO RIVERA  
 CHECKED BY: Smith & M. Callen  
 NO. CE NO. 15931  
 APPROVED D. A. Morse 12-9-65  
 INDUSTRIAL WASTE DIVISION

PROFILE ALIGNMENT AND GRADE OF P.C. 7503  
 SANITARY SEWERS PAGE 1  
 TO BE CONSTRUCTED IN

PINE STREET  
 CASH CONTRACT NO. 66  
 PRIVATE CONTRACT NO. 7503

W.S. 36  
 SHEET 1 OF 2 PAGES  
 SCALE: HORIZ. 1"=40' VERT. 1"=4'  
 OCTOBER, 1965  
 38110  
 PREPARED IN THE OFFICES OF  
 TECHNOLOGICAL ENGINEERING CORPORATION  
 4921 DURFEE AVE., PICO RIVERA, CALIF.  
 REG. C.E. NO. 10610  
 FOR LEGEND SEE PLAN NO. S-1

NOTE: GRADES TO WHICH THIS IMPROVEMENT IS TO BE CONSTRUCTED ARE SHOWN ON PLANS AND PROFILES. GRADE POINTS FOR TOP OF CURB, CENTER LINE OF STREETS, OR CENTER LINE OF ALLEYS ARE SHOWN BY CIRCLES ON PROFILES. AT ALL POINTS BETWEEN DESIGNATED POINTS THE GRADE SHALL BE ESTABLISHED SO AS TO CONFORM TO A STRAIGHT LINE DRAWN BETWEEN SAID DESIGNATED POINTS. ELEVATIONS ARE IN FEET ABOVE U.S.C. & G.S. MEAN SEA LEVEL DATUM OF 1929. THIS DRAWING AND THE DATA HEREON ARE HEREBY MADE A PART OF THE SPECIFICATIONS. WORK SHALL BE CONSTRUCTED ACCORDING TO STANDARD SPECIFICATIONS DATED MAY 25, 1962, ON FILE IN THE OFFICE OF THE CITY ENGINEER AND SHALL BE PROVIDED ONLY IN THE PRESENCE OF THE CITY ENGINEER. BEFORE WORK CAN BE STARTED, THE CONTRACTOR MUST OBTAIN A PERMIT TO EXCAVATE IN CITY STREETS FROM THE L.A. COUNTY ROAD DEPT. DISTRICT OFFICE NO. 48 AND MAKE A DEPOSIT WITH THE CITY OF PICO RIVERA. CONTRACTOR SHALL BE RESPONSIBLE FOR OBTAINING ALL NECESSARY PERMITS. APPROVAL OF THIS PLAN BY THE CITY OF PICO RIVERA DOES NOT CONSTITUTE A REPRESENTATION AS TO THE ACCURACY OF THE LOCATION OF OR THE EXISTENCE OR NON-EXISTENCE OF ANY UNDERGROUND UTILITY PIPE OR STRUCTURE WITHIN THE LIMITS OF THIS PROJECT. THIS NOTE APPLIES TO ALL PAGES. IF WORK IS TO BE DONE ON A STATE HIGHWAY, A PERMIT MUST BE OBTAINED FROM THE STATE OF CALIFORNIA, DIVISION OF HIGHWAYS, 126 SOUTH SPRING STREET, LOS ANGELES, CALIFORNIA.

CITY OF PICO RIVERA, CALIFORNIA  
 JOHN A. LAMBE, CITY ENGINEER  
 APPROVED BY: [Signature] ASSISTANT SANITATION ENGINEER  
 I. D. PARKHURST, CHIEF ENGINEER  
 CO. SAN. DIST. NO. 1101  
 APPROVED BY: [Signature] OFFICE ENGINEER

NO CONNECTIONS FOR THE DISPOSAL OF INDUSTRIAL WASTES SHALL BE MADE TO SEWERS SHOWN ON THESE DRAWINGS WITHOUT WRITTEN PERMISSION FROM THE CHIEF ENGINEER AND GENERAL MANAGER OF THE COUNTY SANITATION DISTRICTS.

