

B.M. SY- 3125 ELEV. 42.502
 4' x 4' in Concrete base of N.E.
 leg of Power Transformer #41 on
 S. of Avalon Blvd. 1st Tower
 South of Artesia Blvd.
 GARDENA QUAD. 19 60

NOTE:
 THERE ARE NUMEROUS UNDERGROUND
 UTILITIES WITHIN THE AREA COVERED
 BY THIS CONTRACT.
 CONTRACTOR MUST CONTACT UNION OIL
 COMPANY OR ITS REPRESENTATIVE PRIOR
 TO STARTING ANY WORK.

LENNOX BLDG. DIST. NO. 7

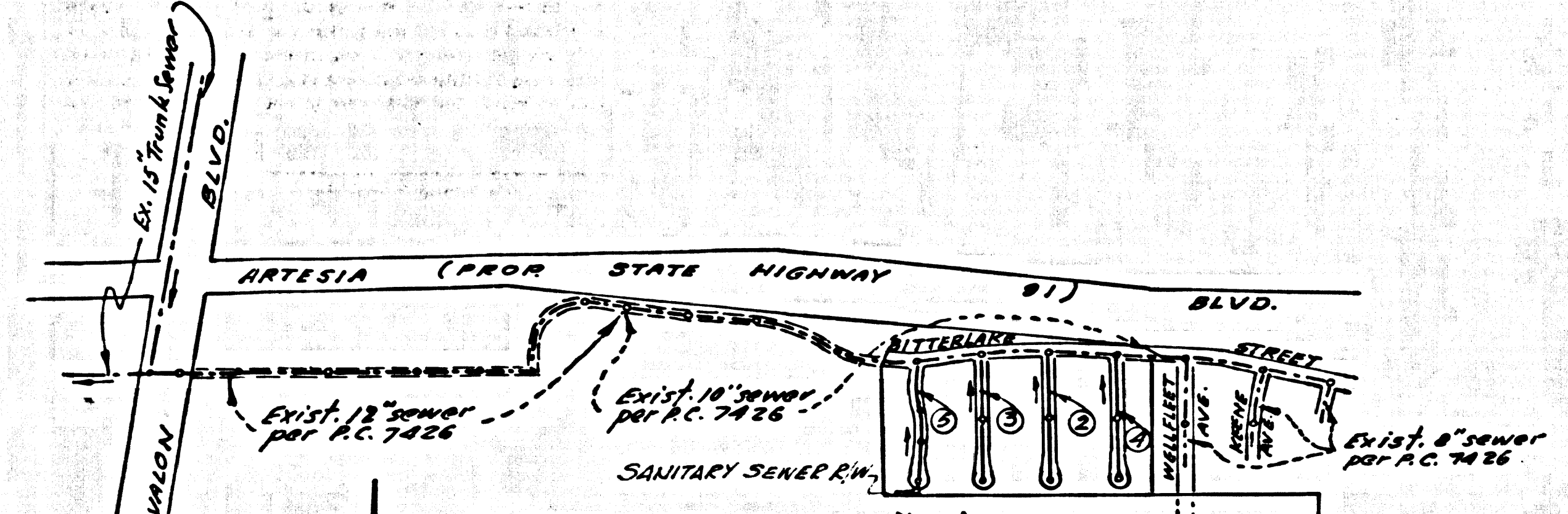
PROFILE, ALIGNMENT AND GRADE OF **P.C. 7504**
SANITARY SEWERS PAGE 1
 TO BE CONSTRUCTED IN
TRACT NO. 25491

PRIVATE CONTRACT NO. 7504

W.S. 26
 3 SHEETS, 5 PAGES
 SCALE: VERT. 1" = 4' HORIZ. 1" = 40'
 DATE: OCT. 1965
 PREPARED BY THE OFFICES OF
E. L. PEARSON AND ASSOCIATES
 BY: *Thomas C. Clark*
 REG. C.E. NO. 3757

FOR LEGEND SEE PLAN NO. S-1

NOTE:
 GRADES TO WHICH THIS IMPROVEMENT IS TO BE CONSTRUCTED ARE SHOWN ON PLANS AND PROFILES. GRADE POINTS FOR TOP OF CURBS, CENTER LINE OF STREETS, OR CENTER LINE OF ALLEYS ARE SHOWN BY CIRCLES ON PROFILES. AT ALL POINTS BETWEEN DESIGNATED POINTS THE GRADE SHALL BE ESTABLISHED SO AS TO CONFORM TO A STRAIGHT LINE DRAWN BETWEEN SAID DESIGNATED POINTS. ELEVATIONS ARE IN FEET ABOVE U.S.C. & G.S. MEAN SEA LEVEL UNLESS OTHERWISE NOTED.
 THIS DRAWING AND THE DATA HEREON ARE HEREBY MADE A PART OF THE SPECIFICATIONS. BEFORE WORK CAN BE STARTED, THE CONTRACTOR MUST OBTAIN A PERMIT TO EXCAVATE IN COUNTY STREETS FROM THE L.A. COUNTY ROAD DEPT., DISTRICT OFFICE NO. 10, AND PAY A FEE TO THE COUNTY ENGINEER, ROOM 300, COUNTY ENGINEERING BUILDING, THE WEST SECOND STREET BUILDING, LOS ANGELES, CALIFORNIA. APPROVAL OF THIS DRAWING BY THE COUNTY OF LOS ANGELES DOES NOT CONSTITUTE A REPRESENTATION AS TO THE ACCURACY OF THE LOCATION OF OR THE EXISTENCE OR NON-EXISTENCE OF ANY UNDERGROUND UTILITY PIPE, OR STRUCTURE WITHIN THE LIMITS OF THIS PROJECT. THIS NOTE APPLIES TO ALL PAGES.
 IF WORK IS TO BE DONE IN A STATE HIGHWAY, A PERMIT MUST BE OBTAINED FROM THE STATE OF CALIFORNIA, DIVISION OF HIGHWAYS, 120 SOUTH SPRING STREET, LOS ANGELES, CALIFORNIA.



INDEX MAP
 TRACT NO. 25491
 P.C. 7504
 Scale 1" = 600'

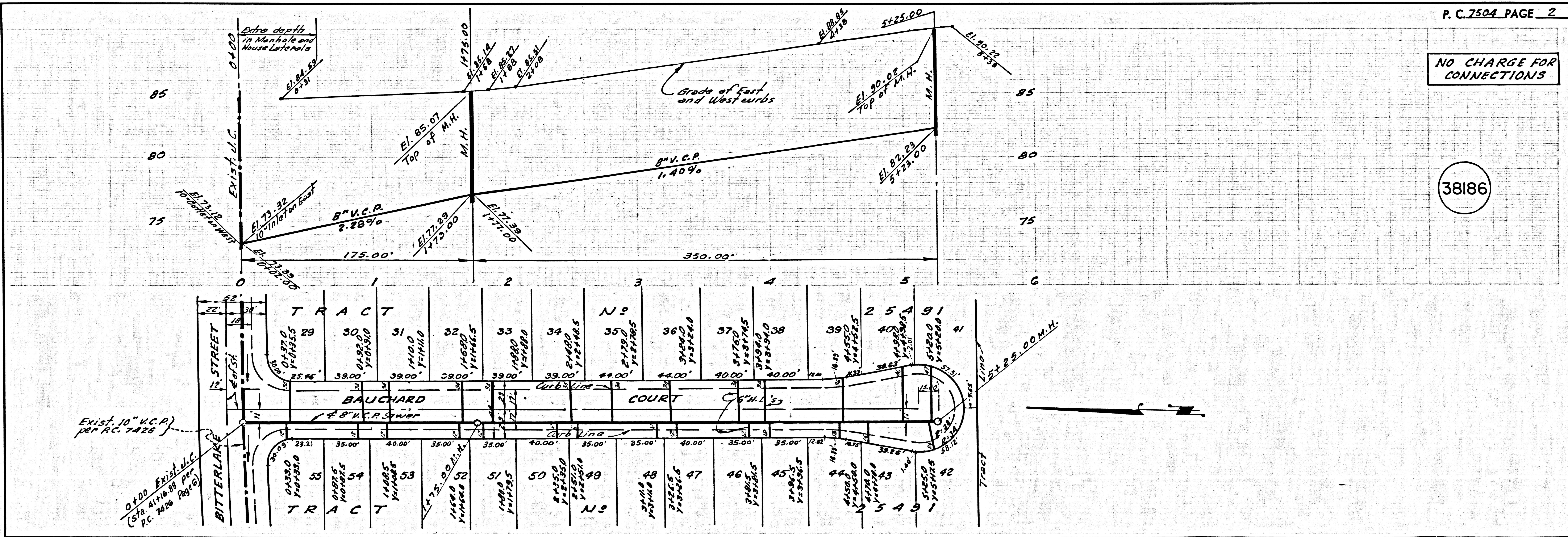
ISSUE NO HOUSE CONNECTION PERMITS UNTIL P.C. 7426 IS ACCEPTED.

PRIVATE ENGINEER'S NOTICE TO CONTRACTOR:
 The existence and location of any underground utility pipes, or structures shown on these plans are obtained by a search of the available records. To the best of our knowledge there are no existing utilities except as shown on this map. The contractor is required to take due precautionary measures to protect the utility lines shown and any other lines not of record or not shown on this drawing.
Thomas C. Clark
 Registered Engineer No. 3757

COLLECT CHARGES AS INDICATED

COUNTY OF LOS ANGELES, CALIFORNIA
 JOHN A. LAMBIE, COUNTY ENGINEER
 J. D. PARKHURST, CHIEF ENGINEER
 APPROVED BY: *[Signature]*
 ASSISTANT SANITATION ENGINEER
 APPROVED BY: *[Signature]*
 OFFICE ENGINEER
 SUBMITTED BY: *[Signature]*
 ORIGINAL ENGINEER
 CHECKED BY: *[Signature]*
 REG. C.E. NO. 10,522

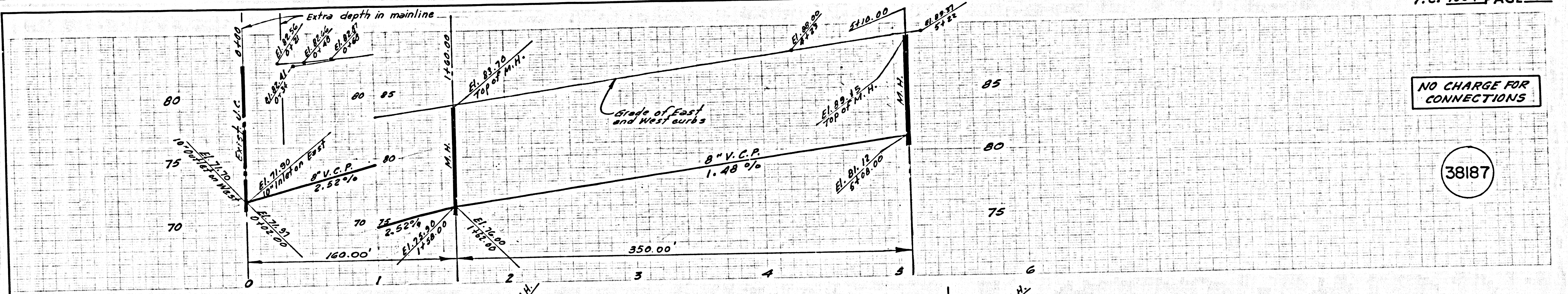
J.N. 0366.53



NO CHARGE FOR CONNECTIONS

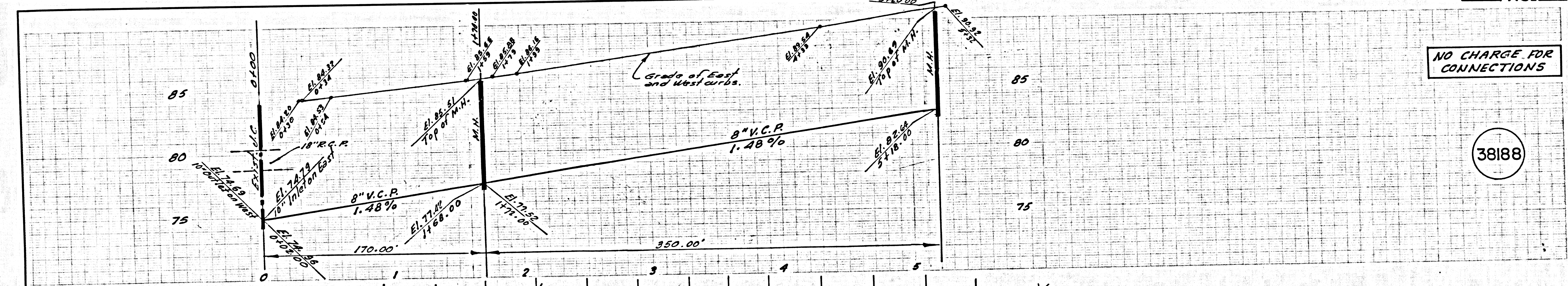
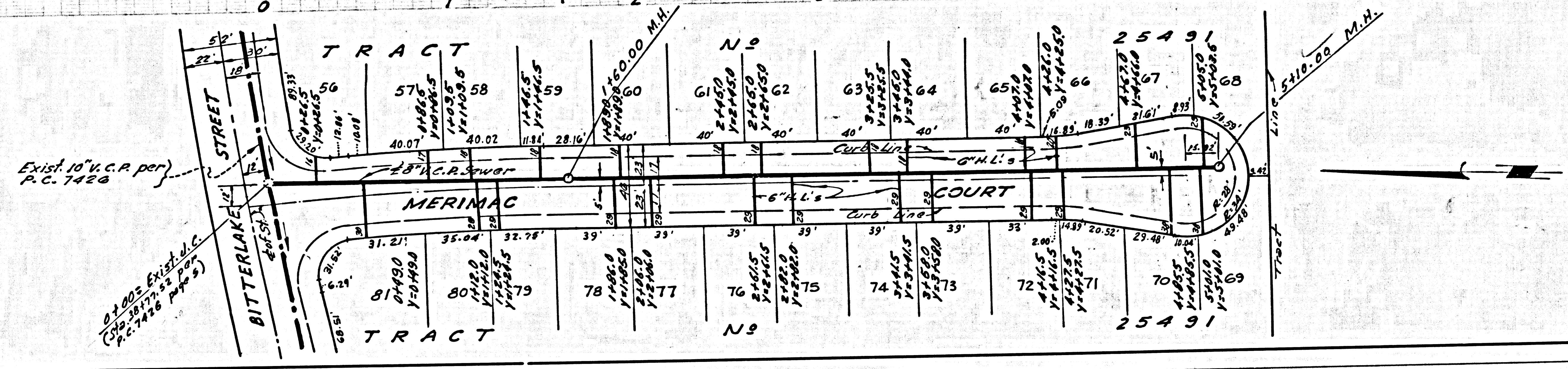
38186

P.C. 7504 PAGE 2



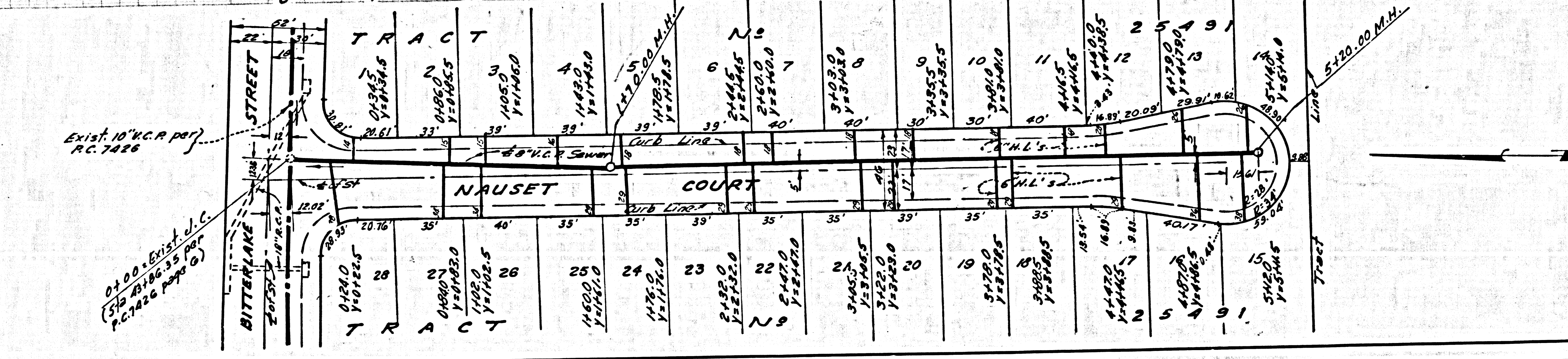
NO CHARGE FOR CONNECTIONS

38187



NO CHARGE FOR CONNECTIONS

38188



NO CHARGE FOR CONNECTIONS

38189

