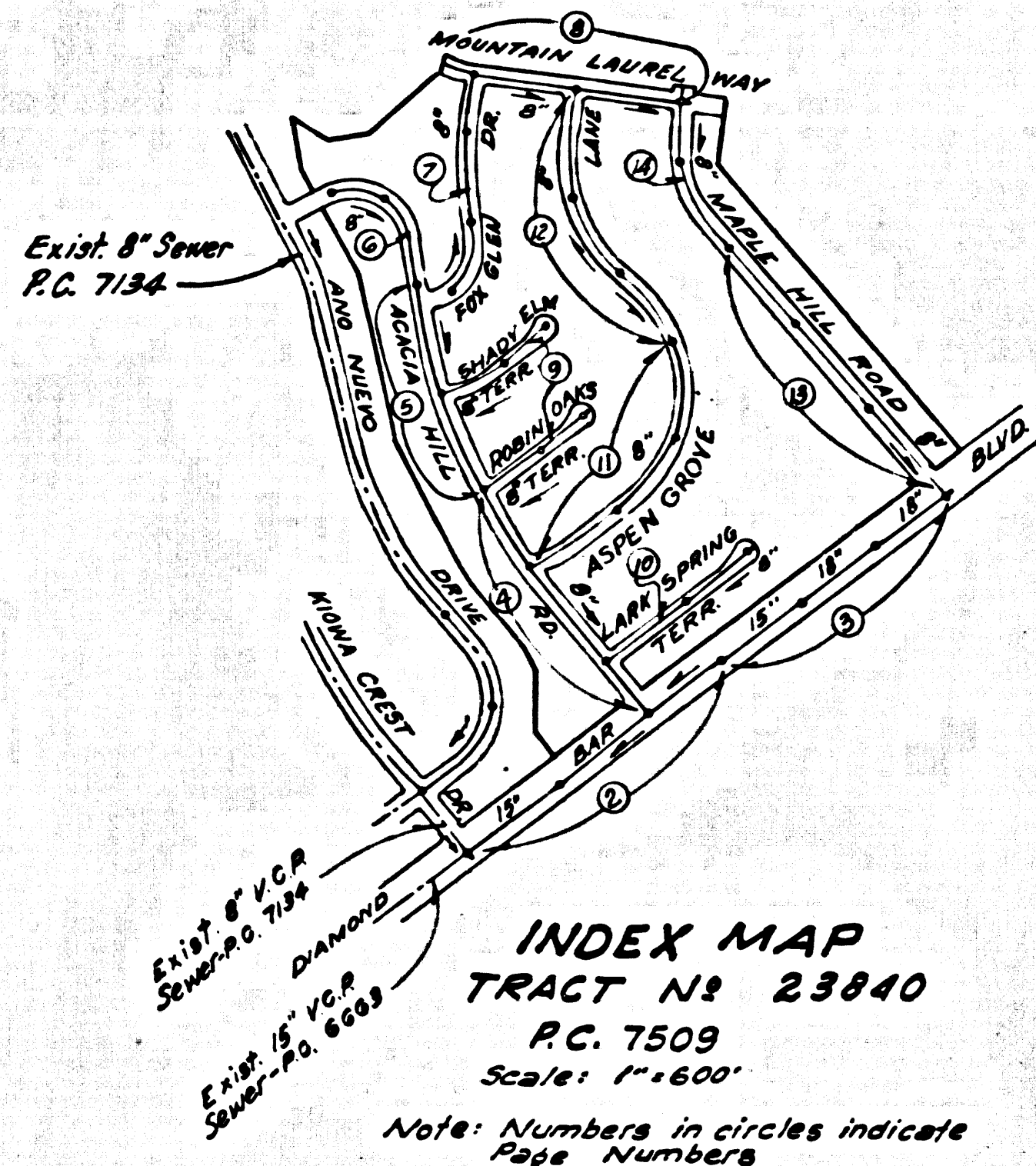


B.M. 86 2103 ELEV. 809.854
Beginning at int. Rainfender Road &
Diamond Bar Blvd. Thence 2085 ft. N. by
along Diamond Bar to conc. front
wall R.O.B.M. top near 165' E. 1/2 of E
Offerlein QUAD. 19 65



20. TEE BRANCHES MAY BE USED INSTEAD OF WYE BRANCHES IN ALL LOCATIONS EXCEPT AS NOTED.

NOTICE TO CONTRACTOR
The Contractor shall notify Southern Counties Gas Company P.O. Box 166 Brea Calif. Phone 529-2883, 48 hours prior to starting any work in the vicinity of the 30" Gas Pipe.

REVISIONS: JULY 18, 1967
PAGE 8 - ADD 4" H.L.'S TO NORTH AT STA'S 2+00, 2+55, 3+30, 3+35, 4+60, 5+25, 5+30, 6+55, 7+20, 7+78 & 8+54.
PAGE 13 - CHANGE H.L. AT STA. 10+82 FROM 6" TO 4"
PAGE 14 - CHANGE ALL H.L.'S TO N.E. FROM 6" TO 4" AND CHANGE H.L. AT STA. 13+40 FROM 1/4" RISE PER FOOT TO 6" DEEP AT H.L.
APPROVED: [Signature] OFFICE OF COUNTY ENGINEER

REVISIONS: JULY 26, 1966
PAGE 2 - Raise sewer grades and add test holes.
PAGE 3 - Raise sewer grades; change pipe size from 15" to 18" between stps 6+55.00 and 7+06.00; and add test holes. Add encasement under curb & M.H.
PAGE 4 - Raise sewer grades between stps 0+44.00 and 8+10.00 and add encasement under 18" Water.
PAGE 13 - Raise sewer grades between stps 1+00.43 and 2+30.00 and add 12" H.L.'S to N.E. Remove School Site from Int. 161.
PAGE 14 - Move 6" H.L. to N.E. @ 13+70 to 13+80 and add 5" H.L.'S to N.E. Remove School Site from Int. 161.
APPROVED: [Signature] OFFICE OF COUNTY ENGINEER

REVISIONS: JUNE 1, 1967
PAGE 13 - CHANGE H.L. & STORM DRAIN LOCATIONS CHANGE H.L.'S TO N.E. FROM 6" TO 4" BETWEEN 1+00.43 AND 1+52.43. ADD 7'-4" H.L. & 7'-8" H.L. AND ENCASEMENT WHERE NECESSARY.
APPROVED: [Signature] OFFICE OF COUNTY ENGINEER

DOUBLE SCALE
SAN DIMAS BLDG. DIST. NO. 10

PROFILE, ALIGNMENT AND GRADE OF
SANITARY SEWERS PAGE 1
CONSTRUCTED IN

TRACT No 23840

PRIVATE CONTRACT NO. 7509

W.S. 39 (B-4)
7 SHEETS, 14 PAGES

SCALE: VERTICAL 1"=4' HORIZONTAL MARCH 1966

PREPARED IN THE OFFICES OF
McINTIRE & QUIROS INC.

40253

REG. C & NO. 10040

FOR LEGEND SEE PLAN NO. S-1

- 1. PROVIDE STAKES ON THE PROPERTY LINE OR PROPERTY LINES PRODUCED AT RIGHT ANGLES TO THE SEWER LINE AT THE CENTER LINE OF EACH MANHOLE.
- 2. NO REPRESENTATIVE OF THE COUNTY ENGINEER WILL SURVEY OR LAY OUT ANY PORTION OF THE WORK.
- 3. THE PRIVATE ENGINEER SHALL FURNISH THE COUNTY ENGINEER WITH GRADE SHEETS AND STATIONING FOR ALL HOUSE LATERALS AND "T" BRANCHES AND SHALL PROVIDE STAKES FOR THEM AT THESE PROPOSED LOCATIONS WITH STATIONING PLAINLY MARKED. ALL HOUSE LATERALS SHALL BE CONSTRUCTED IN A STRAIGHT ALIGNMENT AT RIGHT ANGLES FROM THE MAIN LINE SEWER EXCEPT AS SHOWN ON THE PLANS. HOUSE LATERALS FROM CHIMNEYS SHALL NOT HAVE AN ANGLE OF LESS THAN 45° WITH THE MAIN LINE SEWER. ANY CHANGE IN ALIGNMENT SHALL BE REQUESTED BY WRITING TO THE PRIVATE ENGINEER.
- 4. THE PRIVATE ENGINEER SHALL FURNISH THE HOUSE LATERAL DEPTH AT THE PROPERTY LINE BELOW THE TOP OF CURB ELEVATION FOR EACH HOUSE LATERAL ON THE GRADE SHEET.
- 5. NO REVISIONS SHALL BE MADE IN THESE PLANS WITHOUT THE APPROVAL OF THE COUNTY ENGINEER.
- 6. THE CONTRACTOR SHALL NOTIFY THE CONSTRUCTION DIVISION BY TELEPHONE, MADISON 9-4700, EXT. 81251, AT LEAST TWENTY-FOUR HOURS BEFORE STARTING ANY WORK UNDER THIS CONTRACT.
- 7. MANHOLES SHALL BE BRICK SEWER STRUCTURES PER S-3. PRECAST CONCRETE MANHOLES PER S-2 OR S-4 MAY BE USED AS AN ALTERNATE IN LOCATIONS APPROVED BY THE COUNTY ENGINEER.
- 8. USE STANDARD MANHOLE FRAMES AND COVERS, S-15.
- 9. MANHOLE TOPS IN UNIMPROVED RIGHTS-OF-WAY TO BE SIX INCHES ABOVE FINISHED GRADE.
- 10. USE EXTRA STRENGTH PIPE. ALL PIPE IS STANDARD DEPTH EXCEPT AS NOTED.
- 11. USE MECHANICAL COMPRESSION JOINTS FOR ALL V.C.P. JOINTS PER SPEC. SECS. 3A, 4B & 4F.
- 12. IF A POWER POLE IS WITHIN THREE FEET OF THE SEWER, THE SEWER SHALL BE ENCASED, PER S-2, TWO FEET ON EACH SIDE FROM THE POINT OF INTERFERENCE.
- 13. IF DURING THE COURSE OF CONSTRUCTION IT IS DETERMINED THAT THERE IS LESS THAN FOUR FEET OF COVER OVER THE TOP OF A MAIN LINE OR HOUSE LATERAL V.C.P. SEWER WHICH IS NOT INDICATED ON THE PLANS, THE PIPE SHALL BE ENCASED PER S-2, UNLESS OTHERWISE APPROVED BY THE COUNTY ENGINEER.
- 14. HOUSE LATERALS TO BE CONSTRUCTED WITH INVERTS AT PROPERTY LINE 4 FEET BELOW CURB GRADE EXCEPT AS NOTED.
- 15. RESURFACE ALL TRENCHES WITHIN PAVED AREAS TO MEET L.A. COUNTY ROAD DEPT. OR CALIFORNIA STATE HIGHWAY REQUIREMENTS IN ACCORDANCE WITH PERMITS.
- 16. FOR ALLOWABLE LEAKAGE TEST USE FORMULA NO. 2, SPEC. S.E.C. 5A.
- 17. ALL STATE AND LOCAL TRENCH SAFETY ORDERS WILL BE STRICTLY ENFORCED.

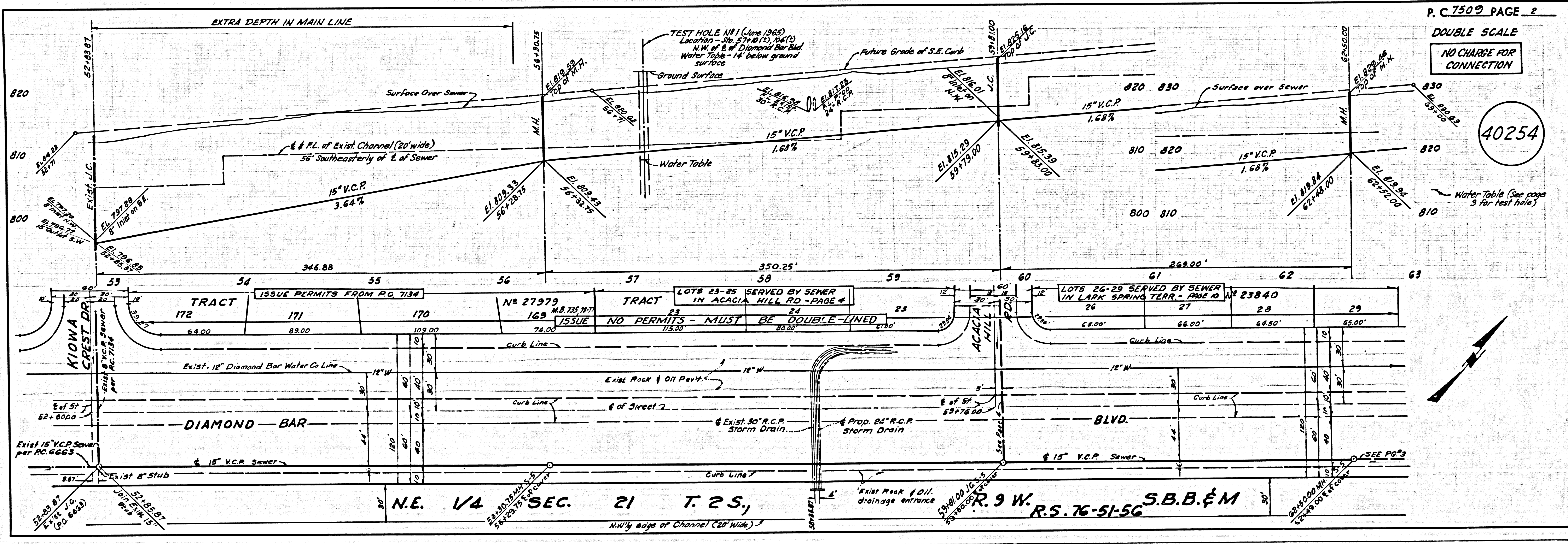
NOTE:
GRADES TO WHICH THE IMPROVEMENT IS TO BE CONSTRUCTED ARE SHOWN ON PLANS AND PROFILES. GRADE POINTS FOR TOP OF CROSS, CENTER LINE OF STREETS, OR CENTER LINE OF ALLEYS ARE SHOWN BY CIRCLES ON PROFILES. AT ALL POINTS BETWEEN DESIGNATED POINTS THE GRADE SHALL BE ESTABLISHED SO AS TO CONFORM TO A STRAIGHT LINE DRAWN BETWEEN SAID DESIGNATED POINTS. ELEVATIONS ARE IN FEET ABOVE U.S.C. & G.S. SEA LEVEL DATUM OF 1929.
THIS DRAWING AND THE DATA HEREON ARE HEREBY MADE A PART OF THE CONTRACT DOCUMENTS.
WHOSE WORK CAN BE STARTED, THE CONTRACTOR MUST OBTAIN A PERMIT TO EXCAVATE IN COUNTY STREETS FROM THE L.A. COUNTY ROAD DEPT., DISTRICT OFFICE NO. 2, 121 S. MAIN ST., LOS ANGELES, CALIF. AND PAY A FEE TO THE COUNTY ENGINEER, ROOM 280, COUNTY ENGINEERING BUILDING, 126 SOUTH SPRING STREET, LOS ANGELES, CALIF. IN ACCORDANCE WITH PERMITS.
IF WORK IS TO BE DONE IN A STATE HIGHWAY, A PERMIT MUST BE OBTAINED FROM THE STATE OF CALIFORNIA, DIVISION OF HIGHWAYS, 126 SOUTH SPRING STREET, LOS ANGELES, CALIFORNIA.

COUNTY OF LOS ANGELES, CALIFORNIA
JOHN A. LAMBE, COUNTY ENGINEER J. D. PARKHURST, CHIEF ENGINEER
APPROVED BY: [Signature] ASSISTANT SANITATION ENGINEER
APPROVED BY: [Signature] OFFICE ENGINEER
SUBMITTED BY: [Signature] SANITATION ENGINEER
CHECKED BY: [Signature] REG. C.E. NO. 72666

COLLECT CHARGES AS INDICATED
[Signature] 4-21-66

NO CONNECTIONS FOR THE DISPOSAL OF INDUSTRIAL WASTES SHALL BE MADE TO SEWERS SHOWN ON THESE DRAWINGS WITHOUT WRITTEN PERMISSION FROM THE CHIEF ENGINEER AND GENERAL MANAGER OF THE COUNTY SANITATION DISTRICTS.

J. N. 03665



P. C. 7509 PAGE 2
DOUBLE SCALE
NO CHARGE FOR CONNECTION

40254

