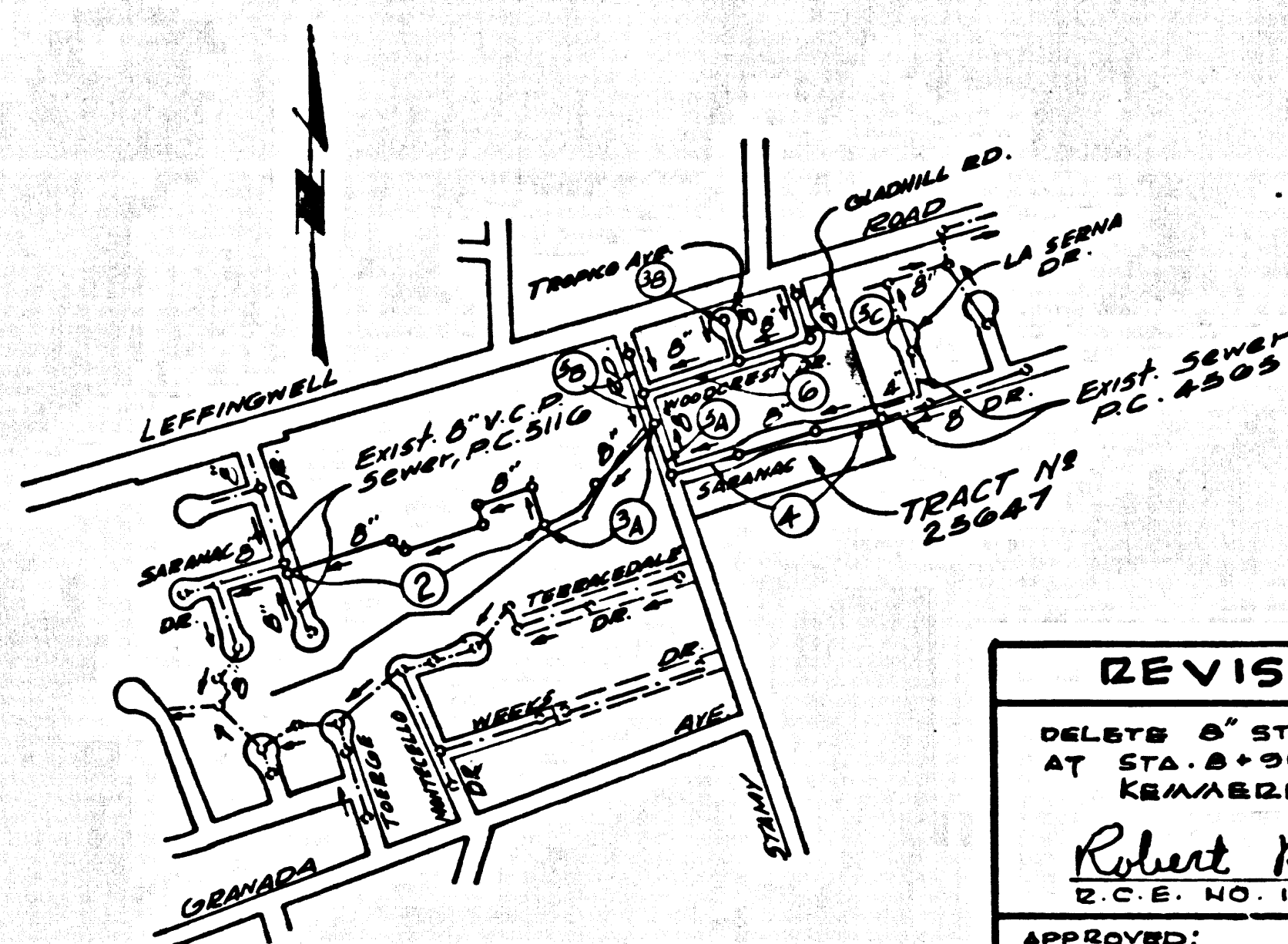


B.M. 5Y 1133-A ELEV. 224.061
 C. 7. Mon. 13 E. of 11th St.
 3rd St. Rd. (Banning Blvd.) and
 Leffingwell Rd. 3' So. of
 Leffingwell Rd.
 Baseline QUAD. 1933 Ad.



INDEX MAP
 TRACT No. 25647
 P.C. 7513
 SCALE: 1"=100'

PRIVATE ENGINEERS NOTICE TO CONTRACTORS
 The existence and approximate location of underground utilities or structures shown on these plans were determined by a search of the available public records, to the best of our knowledge there are no existing underground utilities or structures except as shown on these maps. The contractor is required to take due precautionary measures to protect the utilities or structures shown and any other utilities or structures at the site. It shall be the contractor's responsibility to verify the existence of the utilities or structures concerned before starting work.

REVISION No. 4
 DELAYED 8" STUB TO NORTH IN A.H. AT STA. 8+91.59 ON PAGE 2.
 KEMMERER ENGR. CO. INC.
 Robert R. Flores 8-8-66
 R.E. NO. 11349 DATE

REVISION No. 3
 PAGE 3-A: Relocated M.H. & Sta. 11+71.45 to Sta. 11+75.45.
 KEMMERER ENGR. CO. INC.
 Robert R. Flores 8-30-66
 R.E. NO. 11349 DATE

REVISION No. 2
 PAGE 2 - ADDED CHIMNEYS
 PAGE 2 - CHANGED ALIGNMENT BETWEEN STA. 6+36.53 TO 6+40.00
 PAGE 3 - CHANGED M.H. ELEVATION STA. TO 6+40.00 PER M.H. 8 3157.04.
 KEMMERER ENGR. CO. INC.
 Robert R. Flores 6-10-1966
 R.E. NO. 11349 DATE

REVISION No. 1
 CHANGED ALIGNMENT AND ADDED TO EXISTING BETWEEN MANHOLE 5141 3+45.04 & 11+71.45 ON PAGES 2 & 3-A.
 APP. O'Neill E. McCall 4-11-66
 OFFICE OF CO. ENGR. R.C. 10327 DATE

DOUBLE VERTICAL SCALE
 NORWALK BLDG. DIST. NO. 4.2
 LA MIRADA BLDG. DIST. NO. 4.08

- NOTES:**
- PROVIDE STAKES ON THE PROPERTY LINE OR PROPERTY LINES PRODUCED AT RIGHT ANGLES TO THE SEWER LINE AT THE CENTER LINE OF EACH MANHOLE.
 - NO REPRESENTATIVE OF THE COUNTY ENGINEER WILL SURVEY OR LAY OUT ANY PORTION OF THE WORK.
 - THE PRIVATE ENGINEER SHALL FURNISH THE COUNTY ENGINEER WITH GRADE SHEETS AND STATIONING FOR ALL HOUSE LATERALS AND "T" BRANCHES AND SHALL PROVIDE STAKES FOR THEM AT THEIR PROPER LOCATIONS WITH STATIONING PLAINLY MARKED. ALL HOUSE LATERALS SHALL BE CONSTRUCTED IN A STRAIGHT ALIGNMENT AT RIGHT ANGLES FROM THE MAIN LINE SEWER EXCEPT AS SHOWN ON THE PLANS. HOUSE LATERALS FROM CHIMNEYS SHALL NOT HAVE AN ANGLE OF LESS THAN 45° WITH THE MAIN LINE SEWER. ANY CHANGE IN ALIGNMENT SHALL BE REQUESTED IN WRITING BY THE PRIVATE ENGINEER.
 - THE PRIVATE ENGINEER SHALL FURNISH THE HOUSE LATERAL DEPTH AT THE PROPERTY LINE BELOW THE TOP OF CURB ELEVATION FOR EACH HOUSE LATERAL ON THE GRADE SHEET.
 - NO REVISIONS SHALL BE MADE IN THESE PLANS WITHOUT THE APPROVAL OF THE COUNTY ENGINEER.
 - THE CONTRACTOR SHALL NOTIFY THE CONSTRUCTION DIVISION BY TELEPHONE, HADISON 6-472, EXT. 8131, AT LEAST TWENTY-FOUR HOURS BEFORE STARTING ANY WORK UNDER THIS CONTRACT.
 - MANHOLES SHALL BE BRICK SEWER STRUCTURES PER S. 1. PRECAST CONCRETE MANHOLES PER S. 1 OR S. 4 MAY BE USED AS AN ALTERNATE IN LOCATIONS APPROVED BY THE COUNTY ENGINEER.
 - USE STANDARD MANHOLE FRAMES AND COVERS, S. 15, EXCEPT AS NOTED.
 - MANHOLE TOPS IN UNIMPROVED RIGHTS-OF-WAY TO BE SIX INCHES ABOVE FINISHED GRADE.
 - USE EXTRA STRENGTH PIPE. ALL PIPE IS STANDARD DEPTH EXCEPT AS NOTED.
 - USE MECHANICAL COMPRESSION JOINTS FOR ALL V.C.P. JOINTS PER S.P.C., SECS. 36, 48 & 49.
 - IF A POWER POLE IS WITHIN THREE FEET OF THE SEWER, THE SEWER SHALL BE ENCASED, PER S. 23, TWO FEET ON EACH SIDE FROM THE POINT OF INTERFERENCE.
 - IF DURING THE COURSE OF CONSTRUCTION IT IS DETERMINED THAT THERE IS LESS THAN FOUR FEET OF COVER OVER THE TOP OF A MAIN LINE OR HOUSE LATERAL V.C.P. SEWER WHICH IS NOT INDICATED ON THE PLANS, THE PIPE SHALL BE ENCASED PER S. 23, UNLESS OTHERWISE APPROVED BY THE COUNTY ENGINEER.
 - HOUSE LATERALS TO BE CONSTRUCTED WITH INVERTS AT PROPERTY LINE 6 FEET BELOW CURB GRADE EXCEPT AS NOTED.
 - REPLACE ALL TRENCHES WITHIN PAVED AREAS TO MEET L.A. COUNTY ROAD DEPT. OR CALIFORNIA STATE HIGHWAY REQUIREMENTS IN ACCORDANCE WITH PERMITS.
 - FOR ALLOWABLE LEAKAGE TEST USE FORMULA NO. 2, S.P.C., SEC. 54.
 - ALL STATE AND LOCAL TRENCH SAFETY ORDINANCES WILL BE STRICTLY ENFORCED.
 - From Sta. 0+46 to Sta. 1+16 the Contractor must either follow Per. Specs. Sec. 4-3, or Jack a 36"x 1/2" HD Liner Per. Sec. 4-1 of Specs.
 - Contractor shall obtain release from abutting owners for any damage along R/W due to Contractor before final acceptance of sewer.
 - Figures in circles at House Laterals or chimneys indicate depth below curb or existing ground surface of end of house lateral or top of chimney.

COLLECT CHARGES AS INDICATED

Approved *Clayton Kline*
 LA MIRADA

NO CONNECTIONS FOR THE DISPOSAL OF INDUSTRIAL WASTES SHALL BE MADE TO SEWERS SHOWN ON THESE DRAWINGS WITHOUT WRITTEN PERMISSION FROM THE CHIEF ENGINEER AND GENERAL MANAGER OF THE COUNTY SANITATION DISTRICTS.

PROFILE, ALIGNMENT AND GRADE OF **P.C. 7513**
SANITARY SEWERS PAGE 1
 TO BE CONSTRUCTED IN

TRACT No. 25647

PRIVATE CONTRACT NO. 7513

W.S. 34
 3 SHEETS, 2 PAGES
 SCALE: VERT. 1"=4' HORIZ. 1"=40' NOVEMBER 1965 38626

PREPARED IN THE OFFICES OF
KEMMERER ENGR. CO. INC.
 145 N. FAIRFAX AVE. WHITTIER, CAL.
 BY *Robert R. Flores*
 REG. C. E. NO. 11349

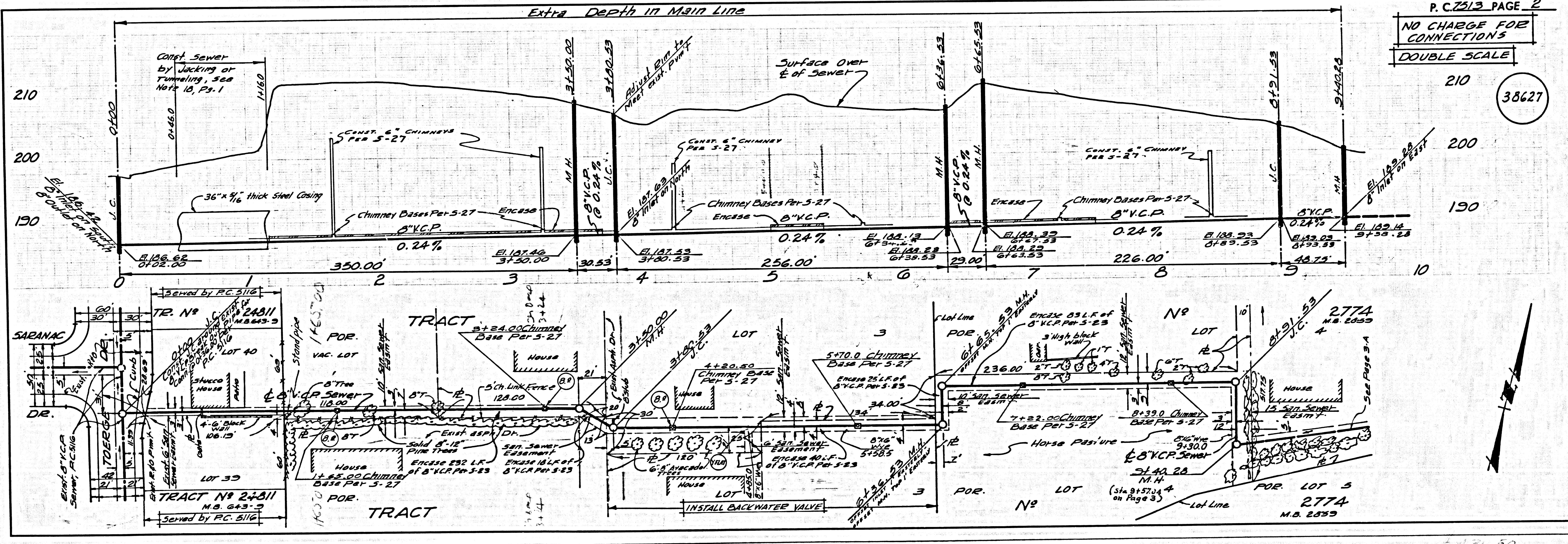
FOR LEGEND SEE PLAN NO. S-1

NOTE:
 GRADES TO WHICH THIS IMPROVEMENT IS TO BE CONSTRUCTED ARE SHOWN ON PLANS AND PROFILES. GRADE POINTS FOR TOP OF CURB, CENTER LINE OF STREETS, OR CENTER LINE OF ALLEYS ARE SHOWN BY CIRCLES ON PROFILES. AT ALL POINTS BETWEEN DESIGNATED POINTS THE GRADE SHALL BE ESTABLISHED SO AS TO CONFORM TO A STRAIGHT LINE DRAWN BETWEEN SAID DESIGNATED POINTS. ELEVATIONS ARE IN FEET ABOVE U.S.C. & G.S. SEA LEVEL DATUM OF 1929. THE DRAWINGS AND THE DATA PRESENTED ARE HEREBY MADE A PART OF THE SPECIFICATIONS. EXHIBITS A, B, C, D, ON FILE IN THE OFFICE OF THE COUNTY ENGINEER AND SHALL BE PROSECUTED AS PART OF THE PROJECTS OF THE COUNTY ENGINEER. BEFORE WORK CAN BE STARTED, THE CONTRACTOR MUST OBTAIN A PERMIT TO OCCUPY IN COUNTY STREETS FROM THE L.A. COUNTY ROAD DEPT., DISTRICT OFFICE NO. 123 CENTER ST., DISTRICT OFFICE, ROOM 300, COUNTY ENGINEERING BUILDING, 128 SOUTH SPRING STREET, LOS ANGELES, CALIFORNIA. APPROVAL OF THIS PLAN BY THE COUNTY OF LOS ANGELES DOES NOT CONSTITUTE A REPRESENTATION AS TO THE ACCURACY OF THE LOCATION OF OR THE EXISTENCE OR NON-EXISTENCE OF ANY UNDERGROUND UTILITY PIPE, OR STRUCTURE WITHIN THE LIMITS OF THIS PROJECT. THIS NOTE APPLIES TO ALL PAGES. IF WORK IS TO BE DONE IN A STATE HIGHWAY, A PERMIT MUST BE OBTAINED FROM THE STATE OF CALIFORNIA, DIVISION OF HIGHWAYS, 128 SOUTH SPRING STREET, LOS ANGELES, CALIFORNIA.

COUNTY OF LOS ANGELES, CALIFORNIA
 JOHN A. LAMBIE, COUNTY ENGINEER J. D. PARKHURST, CHIEF ENGINEER
 CO. ENGR. NO. 11349
 APPROVED BY *Robert R. Flores* APPROVED BY *J. D. Parkhurst*
 ASSISTANT SANITATION ENGINEER OFFICE ENGINEER

CHECKED BY *O'Neill E. McCall*
 REG. C. E. NO. 15731

J.N. 0366.03



P. C. 7513 PAGE 2
 NO CHARGE FOR CONNECTIONS
 DOUBLE SCALE
 38626

