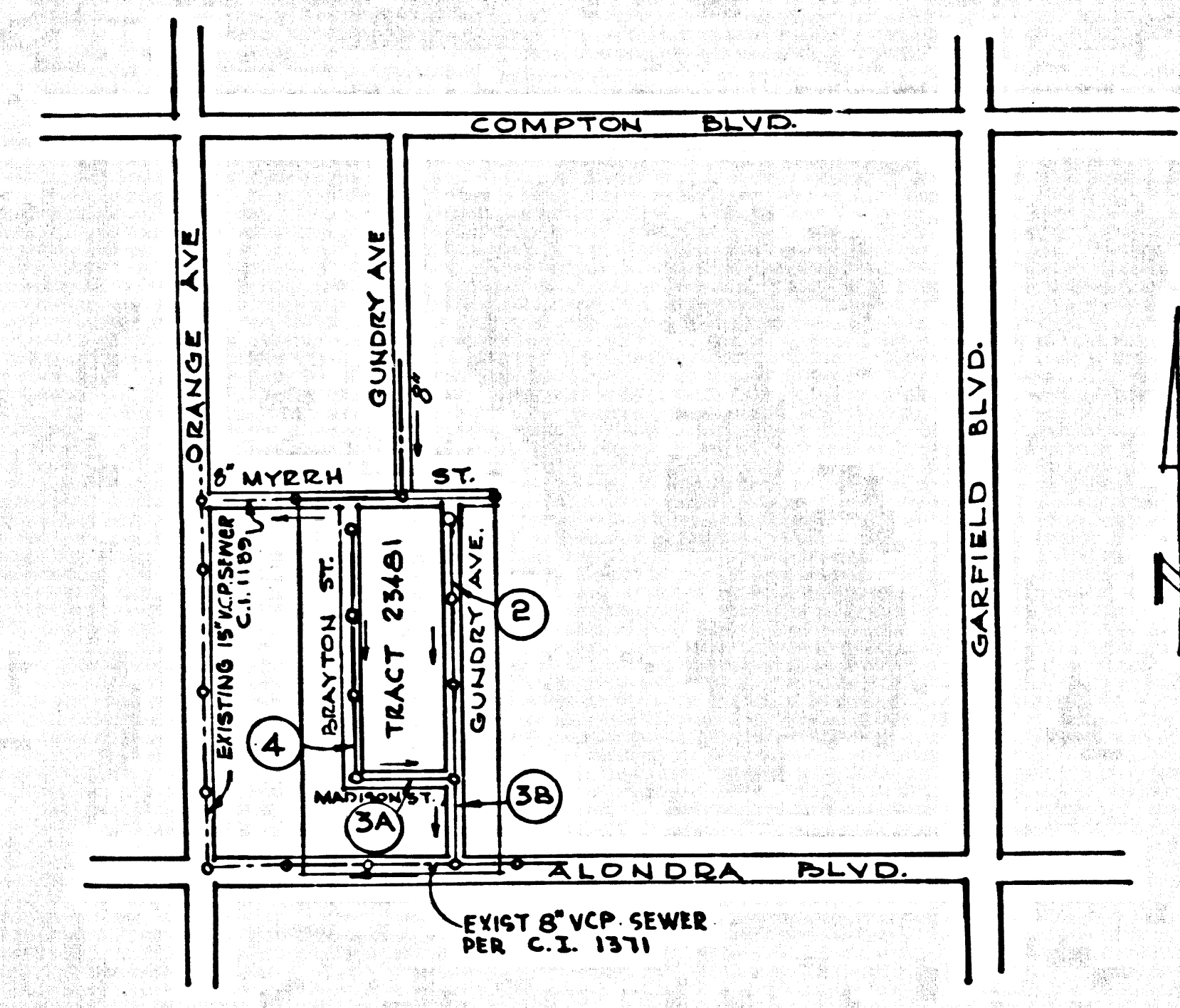


B.M. SYBIOA ELEV 65.717  
 1" = 81' 11" CURBED 12" W.C. CURB 25' x 14" B.C. @ N.W. CORNER ORANGE AVE AND ALONDRA BLVD. 100' x 11' AND 30' x 14' CENTER LINE OF INTERSECTION - PAINTED 1" DIA.  
 BELLFLOWER QUAD. 19 60



INDEX MAP  
 SCALE: 1" = 600'  
 TRACT NO. 23481  
 P.C. 7517

**Private Engineer's Notice to Contractor**  
 All underground utilities or structures reported by the owner or others and those shown on the records examined are indicated with their approximate location and extent.  
 The owner, by accepting these plans or proceeding with improvements pursuant thereto, agrees to assume liability and to hold the engineer harmless for any damage resulting from the existence of underground utilities or structures not reported to the engineer, nor indicated on the public records examined, located at variance with that reported or shown on records examined.  
 The contractor is required to take due precautionary measures to protect the utilities or structures shown and any other utilities or structures at the site. It shall be the contractor's responsibility to notify the owner of the structures concerned before starting work.

**REVISION #1**  
 Page 3A - Removed two house laterals.  
 Page 3B - Added two house laterals.  
 Donald D. Heel RCE 12971  
 California Engineering Service  
 2415 S. MANCHESTER ANAHEIM, CALIF.  
 Office of City Engineer

PARAMOUNT BLDG. DIST. NO. 4.04

- NOTES:
1. PROVIDE STAKES ON THE PROPERTY LINE OR PROPERTY LINES PRODUCED AT RIGHT ANGLES TO THE SEWER LINE AT THE CENTER LINE OF EACH MANHOLE.
  2. NO REPRESENTATIVE OF THE CITY ENGINEER WILL SURVEY OR LAY OUT ANY PORTION OF THE WORK.
  3. THE PRIVATE ENGINEER SHALL FURNISH THE CITY ENGINEER WITH GRADE SHEETS AND STATIONING FOR ALL HOUSE LATERALS AND "T" BRANCHES AND SHALL PROVIDE STAKES FOR THEM AT THEIR PROPER LOCATIONS WITH STATIONING PLAINLY MARKED. ALL HOUSE LATERALS SHALL BE CONSTRUCTED AT RIGHT ANGLES FROM THE MAIN LINE SEWER EXCEPT AS SHOWN ON THE PLANS. HOUSE LATERALS FROM CHIMNEYS SHALL NOT HAVE AN ANGLE OF LESS THAN 45° WITH THE MAIN LINE SEWER. ANY CHANGE IN ALIGNMENT SHALL BE REQUESTED IN WRITING BY THE PRIVATE ENGINEER.
  4. THE PRIVATE ENGINEER SHALL FURNISH THE HOUSE LATERAL DEPTH AT THE PROPERTY LINE BELOW THE TOP OF CURB ELEVATION FOR EACH HOUSE LATERAL ON THE GRADE SHEET.
  5. NO REVISIONS SHALL BE MADE IN THESE PLANS WITHOUT THE APPROVAL OF THE CITY ENGINEER.
  6. THE CONTRACTOR SHALL NOTIFY THE CONSTRUCTION DIVISION BY TELEPHONE, MADISON 9-242, EXT. 8158, AT LEAST TWENTY-FOUR HOURS BEFORE STARTING ANY WORK UNDER THE CONTRACT.
  7. MANHOLES SHALL BE BRICK SEWER STRUCTURES PER S.E. PRECAST CONCRETE MANHOLES PER S-5 OR S-4 MAY BE USED AS AN ALTERNATE IN LOCATIONS APPROVED BY THE CITY ENGINEER.
  8. USE STANDARD MANHOLE FRAMES AND COVERS, S-18, EXCEPT AS NOTED.
  9. MANHOLE TOPS IN UNIMPROVED RIGHTS-OF-WAY TO BE SIX INCHES ABOVE FINISHED GRADE.
  10. USE STEEL STRENGTH PIPE. ALL PIPE IS STANDARD DEPTH EXCEPT AS NOTED.
  11. USE MECHANICAL COMPRESSION JOINTS FOR ALL V.C.P. JOINTS PER SPEC. SECT. 34, 48 & 49.
  12. IF A POWER POLE IS WITHIN THREE FEET OF THE SEWER, THE SEWER SHALL BE SHICASSO, PER S-25 TWO FEET ON EACH SIDE FROM THE POINT OF INTERFERENCE.
  13. IF DURING THE COURSE OF CONSTRUCTION IT IS DETERMINED THAT THERE IS LESS THAN FOUR FEET OF COVER OVER THE TOP OF A MAIN LINE OR HOUSE LATERAL V.C.P. SEWER WHICH IS NOT INDICATED ON THE PLANS, THE PIPE SHALL BE ENCASED PER S-25, UNLESS OTHERWISE APPROVED BY THE CITY ENGINEER.
  14. HOUSE LATERALS TO BE CONSTRUCTED WITH INVERTS 6 FEET BELOW TOP OF CURB AT PROPERTY LINE.
  15. RESURFACE ALL TRENCHES WITHIN PAVED AREAS TO MEET COUNTY ROAD DEPT. OR CALIFORNIA STATE HIGHWAY REQUIREMENTS IN ACCORDANCE WITH PERMITS.
  16. FOR ALLOWABLE LEAKAGE TEST USE FORMULA NO. 2, SPEC. SEC. 54.
  17. ALL STATE AND LOCAL TRENCH SAFETY ORDERS WILL BE STRICTLY ENFORCED.

NO CONNECTIONS FOR THE DISPOSAL OF INDUSTRIAL WASTES SHALL BE MADE TO SEWERS SHOWN ON THESE DRAWINGS WITHOUT WRITTEN PERMISSION FROM THE CHIEF ENGINEER AND GENERAL MANAGER OF THE COUNTY SANITATION DISTRICT.

**COLLECT CHARGES AS INDICATED**  
 Heel D. June 1/27/66

PROFILE, ALIGNMENT AND GRADE OF  
**SANITARY SEWERS** PAGE 1  
 TO BE CONSTRUCTED IN

TRACT NO. 23481  
 PRIVATE CONTRACT NO. 7517

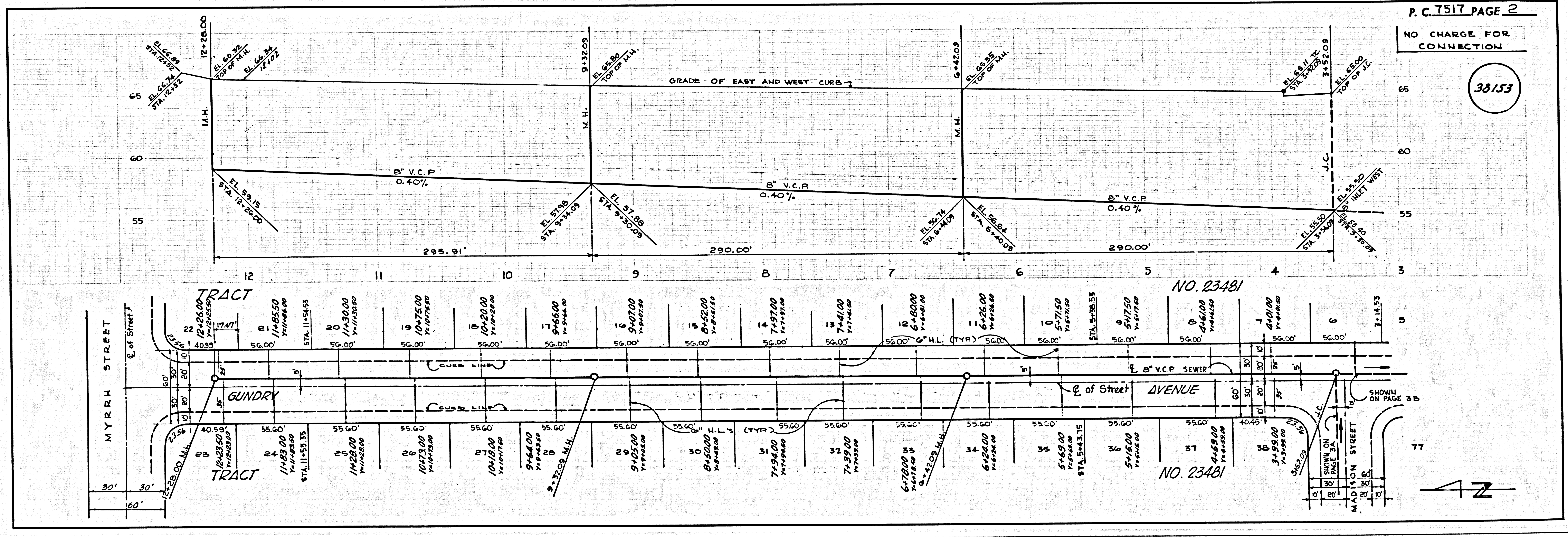
W.S. 32  
 2 SHEETS, 4 PAGES  
 SCALE: HORIZ. 1" = 40' VERT. 1" = 4' DECEMBER, 1965  
 PREPARED IN THE OFFICES OF  
 CALIFORNIA ENGINEERING SERVICE  
 2415 S. MANCHESTER ANAHEIM, CALIF.  
 Donald D. Heel  
 REG. C.E. NO. 12971

38152

FOR LEGEND SEE PLAN NO. S-1

NOTE:  
 GRADES TO WHICH THIS IMPROVEMENT IS TO BE CONSTRUCTED ARE SHOWN ON PLANS AND PROFILE. GRADE POINTS FOR TOP OF CURB, CENTER LINE OF STREETS, OR CENTER LINE OF ALLEYS ARE SHOWN BY CIRCLES ON PROFILE. AT ALL POINTS BETWEEN DESIGNATED POINTS THE GRADE SHALL BE ESTABLISHED SO AS TO CONFORM TO A STRAIGHT LINE DRAWN BETWEEN SAID DESIGNATED POINTS. ELEVATIONS ARE IN FEET ABOVE U.S.C. & G.S. SEA LEVEL DATUM OF 1929.  
 REVISIONS ARE IN RED AND ARE PART OF THE SPECIFICATIONS.  
 THIS DRAWING AND THE DATA HEREON ARE HEREBY MADE A PART OF THE SPECIFICATIONS.  
 THE WORK SHALL BE CONSTRUCTED ACCORDING TO STANDARD SPECIFICATIONS DATED MAY 25, 1962 ON FILE IN THE OFFICE OF THE CITY ENGINEER AND SHALL BE PROTECTED ONLY BY THE PRESENCE OF THE CITY ENGINEER.  
 CITY ENGINEER AND SHALL BE PROTECTED ONLY BY THE PRESENCE OF THE CITY ENGINEER.  
 SOLD SEPARATELY. DISTRICT OFFICE NO. 1001, LOS ANGELES, CALIF. COUNTY OFFICE, SUPERVISOR TO COVER THE COST OF CONSTRUCTION INSPECTION AND RECORD DRAWING.  
 APPROVAL OF THE PLAN BY THE CITY OF PARAMOUNT DOES NOT CONSTITUTE A REPRESENTATION AS TO THE ACCURACY OF THE LOCATION OF OR THE EXISTENCE OR NON-EXISTENCE OF ANY UNDERGROUND UTILITY PIPE, OR STRUCTURE WITHIN THE LIMITS OF THE PROJECT. THIS NOTE APPLIES TO ALL PAGES.  
 IF WORK IS TO BE DONE IN A STATE HIGHWAY, PERMIT MUST BE OBTAINED FROM THE STATE OF CALIFORNIA, DIVISION OF HIGHWAYS, 330 SOUTH BRIDGE STREET, LOS ANGELES, CALIFORNIA.

CITY OF PARAMOUNT, CALIFORNIA  
 JOHN A. LAMBE, CITY ENGINEER J. D. PARKHURST, CHIEF ENGINEER  
 ON BEHALF OF THE CITY OF PARAMOUNT  
 APPROVED BY: [Signature] ASSISTANT SANITATION ENGINEER  
 APPROVED BY: [Signature] OFFICE ENGINEER  
 SUBMITTED BY: [Signature] REGIONAL ENGINEER  
 LOS ANGELES  
 CHECKED BY: [Signature] REG. C.E. NO. 12971



P.C. 7517 PAGE 2  
 NO CHARGE FOR CONNECTION

38153

