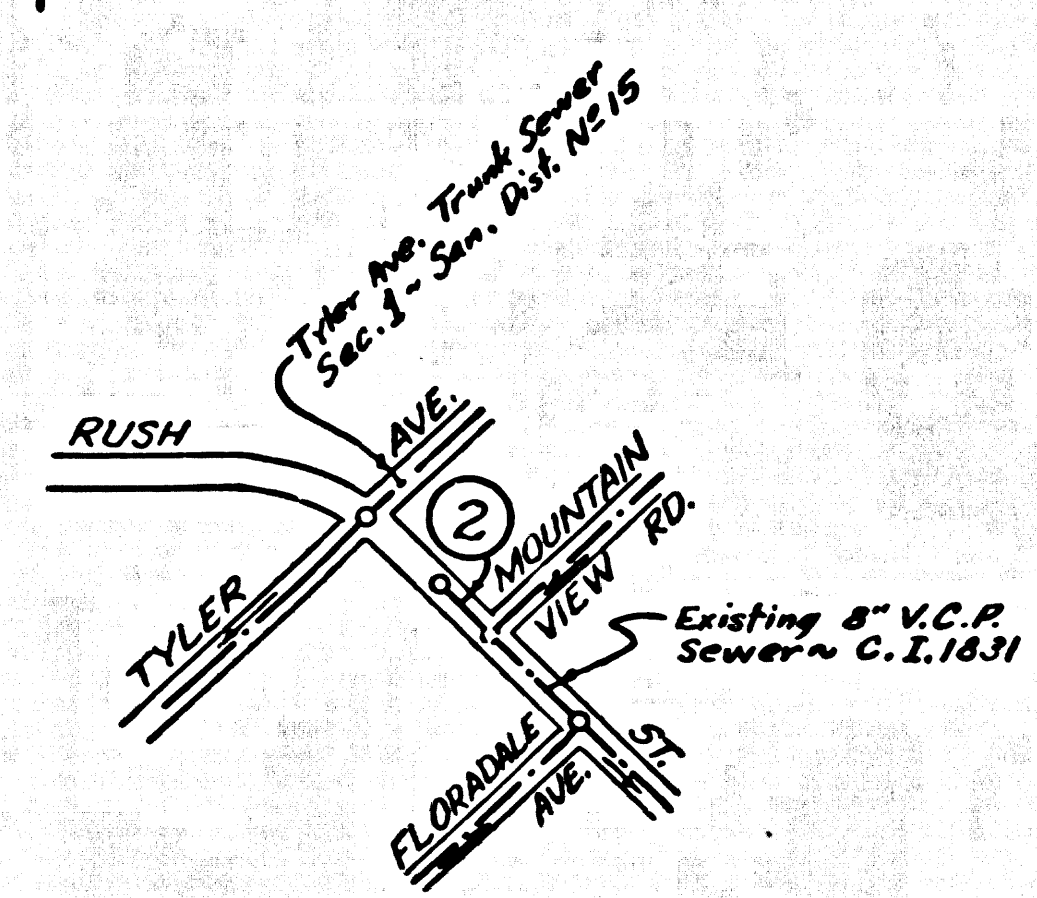


818
B.C. 5218

72
W.S.U.A

23289
S 70 S 12382

B.M. S.D. 1419 ELEV. 253.47
 Mountain View Rd & Rush St. E. Cor.
 Bl. Spk. in cb; 135° S. Ely from E.
 of Mountain View Rd. in front of
 Bldg. 11015 - F.B. 2515-25



INDEX MAP
 RUSH ST. P.C. 7518
 Scale: 1" = 600'

② INDICATES PAGE NUMBER

SOUTH EL MONTE BUILDING DISTRICT No. 504

USE EXTRA STRENGTH PIPE. ALL PIPE IS STANDARD DEPTH (EIGHT-TO-TEN) INCHES.
 USE MECHANICAL COMPRESSION JOINTS FOR ALL VITRIFIED CLAY PIPE SEWERS.
 ALL STRUCTURES SHALL BE BRICK MANHOLES, EXCEPT AS NOTED.
 USE STANDARD MANHOLE FRAMES AND COVERS, BRICK-AS-WORK.
 USE FORMULA NO. 2, SEC. 26 OF SPECIFICATIONS TO COMPUTE ALLOWABLE LEAKAGE.
 CONSTRUCT HOUSE LATERALS WITH INVERTS AT PROPERTY LINE & FEET BELOW CURB GRADE, OR GRADE OF CENTER LINE OF STREET, EXCEPT AS NOTED.
 HOUSES IN CIRCLES AT ENDS OF HOUSE LATERALS INDICATE DEPTH BELOW CURB GRADE, OR GRADE OF CENTER LINE OF STREET.
 HOUSES IN CIRCLES AT ENDS OF HOUSE LATERALS INDICATE HOUSE LATERALS SHALL BE CONSTRUCTED WITH 1/4" RISE PER FOOT TO PROPERTY LINE.
 WORDS IN CIRCLES AT ENDS OF HOUSE LATERALS INDICATE IT'S SHALL BE LAID HORIZONTAL AND HOUSE LATERALS SHALL BE CONSTRUCTED WITH 1/4" RISE PER FOOT TO PROPERTY LINE.
 ALL HOUSE LATERALS SHALL BE CONSTRUCTED IN A STRAIGHT ALIGNMENT AT RIGHT ANGLES FROM THE MAIN LINE SEWER EXCEPT AS SHOWN ON THE PLANS. HOUSE LATERALS FROM CHIMNEYS SHALL NOT HAVE AN ANGLE OF LESS THAN 45 DEGREES WITH THE MAIN LINE SEWER.
 THE CONTRACTOR SHALL NOTIFY THE CONSTRUCTION DIVISION BY TELEPHONE MADISON 9-4747, EXT. 81581 AT LEAST 24 HOURS BEFORE STARTING ANY WORK UNDER THIS CONTRACT.
 CONSTRUCTION IN SEWER ADJACENT AREAS SHALL BE IN ACCORDANCE WITH SEWER REPAIR AND THE CONTRACTOR SHALL PAY ALL COSTS IN CONNECTION THEREWITH.
 ALL STATE AND LOCAL TRENCH SAFETY ORDERS WILL BE RIGIDLY ENFORCED.
 RESURFACING SCHEDULE: RESURFACE TRENCH WITHIN PAVED AREA WITH PRIME ROCK AND ON _____ INCHES IN THICKNESS ON _____ INCHES OF AGGREGATE BASE MATERIALS, EXCEPT AS NOTED BELOW.

PAGE NO.	STREET	STATION LIMITS		TYPE OF RESURFACING
		FROM	TO	
2	RUSH ST.	1+00	5+20	Resurface Trench With Temporary Stack Pipe Frame 2" In Thickness.

ALL CONCRETE CROSS GUTTERS, CURBS, GUTTERS, PAVEMENT, AND DRIVEWAYS SHALL BE FINISHED OR JACKED PER LOS ANGLES COUNTY ROAD DEPARTMENT REQUIREMENTS.
 THE FOLLOWING LATEST REVISED STANDARD PLANS ON FILE IN THE OFFICE OF CITY ENGINEER SHALL APPLY IN THE CONSTRUCTION OF THIS PROJECT:

- LEGEND
- MINIMUM EXCAVATION SAFETY REQUIREMENTS 5-1
- BRICK MANHOLE 5-2
- MANHOLE FRAME AND COVER 5-3
- MANHOLE STEP 5-4
- BEDDING FOR SEWER PIPE 5-5
- SPECIAL SUPPORT AND PROTECTION 5-6
- CRACKING AND ENCASEMENT 5-7
- STANDARD WYE SUPPORT 5-8
- STOPPES 5-9

- THE UNDERGROUND UTILITY COMPANIES WITHIN THE LIMITS OF THIS PROJECT ARE AS FOLLOWS:
- (1) SAN GABRIEL VALLEY WATER CO.
 - (2) SOUTHERN UTILITIES GAS CO.
 - (3) PACIFIC TELEPHONE CO.
 - (4)

NO CONNECTIONS FOR THE DISPOSAL OF INDUSTRIAL WASTES SHALL BE MADE TO SEWERS SHOWN ON THESE DRAWINGS WITHOUT WRITTEN PERMISSION FROM THE CHIEF ENGINEER AND GENERAL MANAGER OF THE COUNTY SANITATION DISTRICTS.

PRIVATE CONTRACT NO. 7518

PROFILE, ALIGNMENT AND GRADE OF
 SANITARY SEWERS
 TO BE CONSTRUCTED IN
RUSH STREET
 AND OTHER RIGHTS OF WAY

38052

1 SHEETS, 2 PAGES

SCALE VERT. 1" = 4'
 HORIZ. 1" = 40'
 JANUARY 1966
 CITY OF SOUTH EL MONTE, CALIFORNIA

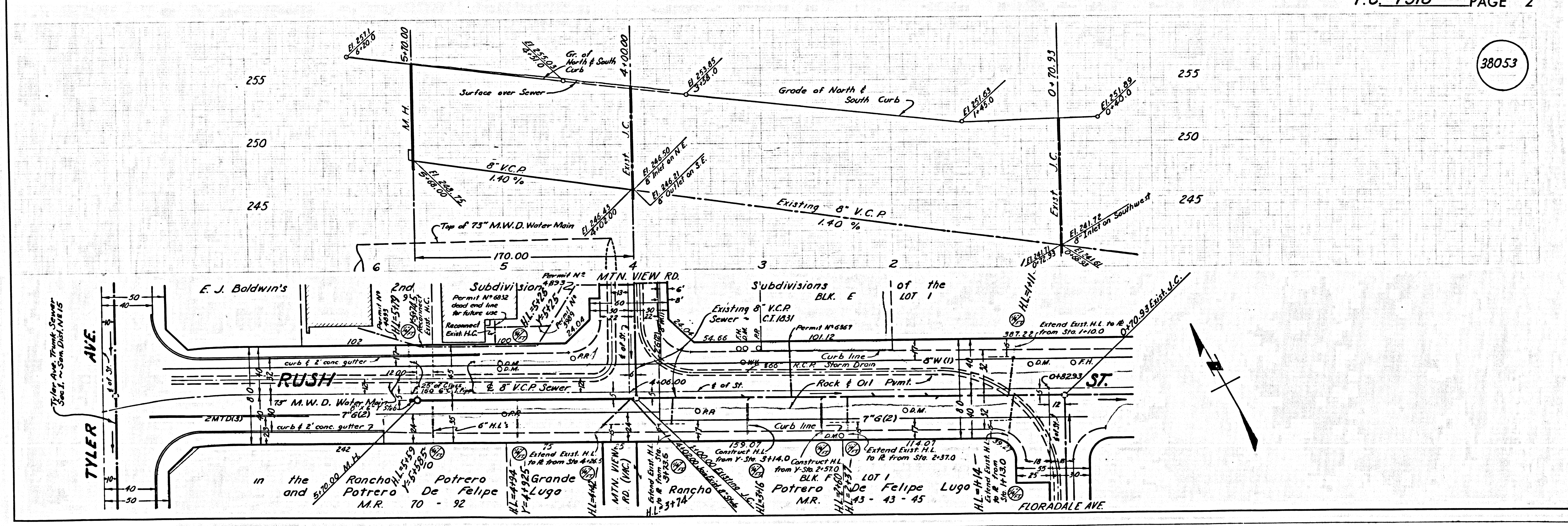
JOHN A. LAMBIE CITY ENGINEER
 APPROVED BY *[Signature]* CHIEF ENGINEER OF COUNTY SANITATION DISTRICT NO. 504
 RECOMMENDED BY *[Signature]* MUNICIPAL ENGINEER
 DESIGNED BY *[Signature]* M.E.C. NO. 7852

NOTES:
 WORK SHALL BE CONSTRUCTED ACCORDING TO STANDARD SPECIFICATIONS DATED MAY 25, 1965 AS AMENDED FILED IN THE OFFICE OF THE CITY ENGINEER AND SHALL BE PROSECUTED ONLY IN THE PRESENCE OF THE CITY ENGINEER.
 GRADES TO WHICH THIS IMPROVEMENT IS TO BE CONSTRUCTED ARE SHOWN ON PLANS AND PROFILES. GRADE POINTS FOR TOP OF CURB, CENTER LINE OF STREET OR CENTER LINE OF ALLEY, ARE SHOWN BY CIRCLES ON PROFILES AT ALL POINTS BETWEEN DESIGNATED POINTS THE GRADE SHALL BE ESTABLISHED SO AS TO CONFORM TO A STRAIGHT LINE DRAWN BETWEEN SAID DESIGNATED POINTS.
 ELEVATIONS ARE IN FEET ABOVE U.S.C. & G.S. MEAN LEVEL DATUM OF 1929.
 UNIT PRICES FOR ADDITIONAL WORK WHICH MAY BE REQUIRED BUT WHICH CANNOT BE ASCERTAINED IN ADVANCE, SHALL BE SUBMITTED IN THE PROPOSAL.
 THIS DRAWING AND THE DATA HEREON ARE HEREBY MADE A PART OF THE SPECIFICATIONS.

LAYOUT	F. YOUNGDAHL	DEC. 1965	UNDERGROUND	R. W. Scott	1-21-66
TRACED	F. YOUNGDAHL	JAN. 1966	BENCH MARKS	J. J. Laugan	1-21-66
CHECKED	J. de JONG	JAN. 1966	MAINTENANCE		
F. B.	2569		INSPECTOR		
A. B.	8114	W. S. 37	RECORD PLANS		

Trim Line

38053

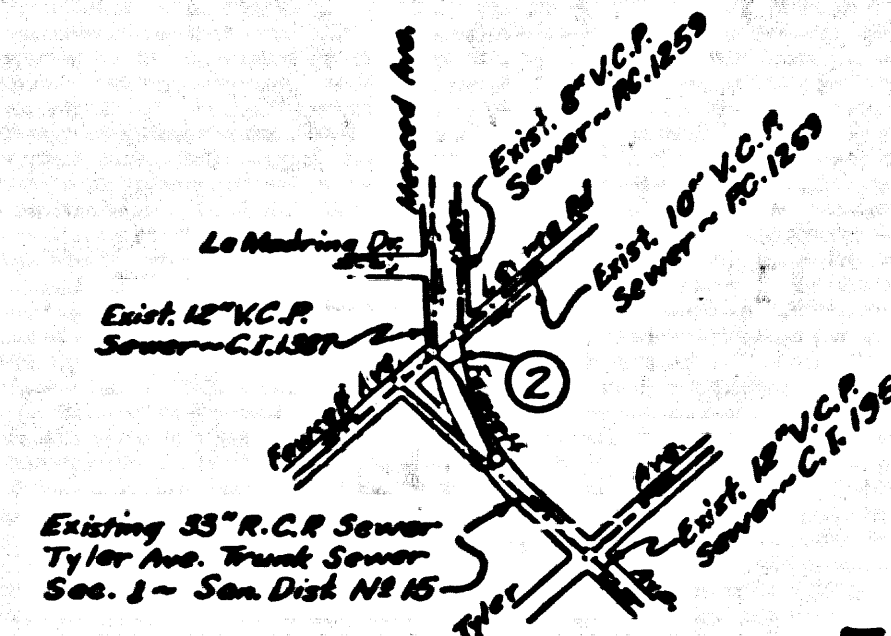


Trim Line

A-8125 3A
ANA TTESMNA

Trim Line

B.M. S.D. 707 ELEV. 231.175
F.B. 3317-8 MERCED AVE & LERMA RD.
N.E. COR. BT. SPK. IN C.B. 20' E.
OF E'Y C.R.



INDEX MAP
FAWCETT AVE. P.C. 7518-A
Scale: 1" = 600'

② INDICATES PAGE NUMBER

SOUTH EL MONTE BUILDING DISTRICT No. 5.04

PAGE 1

THE METAL STANDARD PIPE, ALL PIPE IS STANDARD SEWER EXCEPT AS NOTED.
THE MECHANICAL CONNECTIONS SHALL BE AS SHOWN ON THE STANDARD SPECIFICATIONS.
ALL STRUCTURES SHALL BE BRICK MASONRY, UNLESS OTHERWISE NOTED.
THE STANDARD MASONRY PLANS AND COVERS, UNLESS OTHERWISE NOTED.
THE STANDARD NO. 12, 24" OR SPECIFICATIONS TO 12" PIPE APPROVED SEWER.
CONTRACTOR SHALL BE RESPONSIBLE FOR PROTECTING ALL EXISTING UTILITIES, OR GRADE OF OTHER LINE OF STREET, EXCEPT AS NOTED.
PIVOTS IN CIRCLES AT END OF HOUSE LATERALS INDICATE HOUSE LATERALS SHALL BE CONSTRUCTED WITH 12" 1500 PSI PIPE TO PROPERTY LINE.
PIVOTS IN CIRCLES AT END OF HOUSE LATERALS INDICATE HOUSE LATERALS SHALL BE CONSTRUCTED WITH 12" 1500 PSI PIPE TO PROPERTY LINE.
ALL HOUSE LATERALS SHALL BE CONSTRUCTED IN A STEADY ALIGNMENT AT RIGHT ANGLES FROM THE MAIN LINE SEWER EXCEPT AS SHOWN ON THE PLANS, HOUSE LATERALS FROM CONCRETE SHALL HAVE AN ANGLE OF LESS THAN 45 DEGREES WITH THE MAIN LINE SEWER.
THE CONTRACTOR SHALL NOTIFY THE CONSTRUCTION DIVISION BY TELEPHONE IMMEDIATELY, IN WRITING AT LEAST 24 HOURS BEFORE STARTING ANY WORK UNDER THIS CONTRACT.
CONTRACTOR SHALL BE RESPONSIBLE FOR PROTECTING ALL EXISTING UTILITIES, OR GRADE OF OTHER LINE OF STREET, EXCEPT AS NOTED.
ALL STATE AND LOCAL TRENCH SAFETY ORDERS WILL BE STRICTLY ENFORCED.
REINFORCING REQUIRED: REINFORCE TRENCH WITHIN PAVED AREA WITH REBAR ROCK AND OIL. INCHES IN REBAR: 24" SPACES OF APPROXIMATE MASS MATERIALS EXCEPT AS NOTED BELOW.

RESURFACE TRENCH WITH TEMPORARY "STOCK PILE" PREMIX 2 INCHES IN THICKNESS.

NAME	STATION	FROM	TO	TYPE OF REINFORCING

- REBAR EXCAVATION SAFETY REQUIREMENTS 0.4
- BRICK MASONRY 0.4
- MASONRY FRAME AND COVER 0.4
- MASONRY PIPE 0.7
- SEWER FOR STEEP PIPE 0.3
- SPECIAL SUPPORT AND PROTECTION 0.3
- CHANGING AND REPAIRS 0.3
- STANDARD PIPE SUPPORT 0.3
- STOPPERS 0.3

THE UNDERSIGNED SURETY COMPANIES WITHIN THE LIMITS OF THIS PROJECT ARE AS FOLLOWS:
SAN GABRIEL VALLEY WATER CO.
SOUTHERN COUNTIES GAS CO.
PACIFIC TELEPHONE CO.

NO CONNECTIONS FOR THE DISPOSAL OF INDUSTRIAL WASTES SHALL BE MADE TO SEWERS SHOWN ON THESE DRAWINGS WITHOUT WRITTEN PERMISSION FROM THE CHIEF ENGINEER AND GENERAL MANAGER OF THE COUNTY SANITATION DISTRICTS.

PRIVATE CONTRACT NO. 7518-A
PROFILE, ALIGNMENT AND GRADE OF
SANITARY SEWERS
TO BE CONSTRUCTED IN
FAWCETT AVENUE
AND OTHER RIGHTS OF WAY

1 SHEETS, 2 PAGES

SCALE: HORIZ. 1" = 40'
VERT. 1" = 4'
JANUARY 1966
CITY OF SOUTH EL MONTE, CALIFORNIA

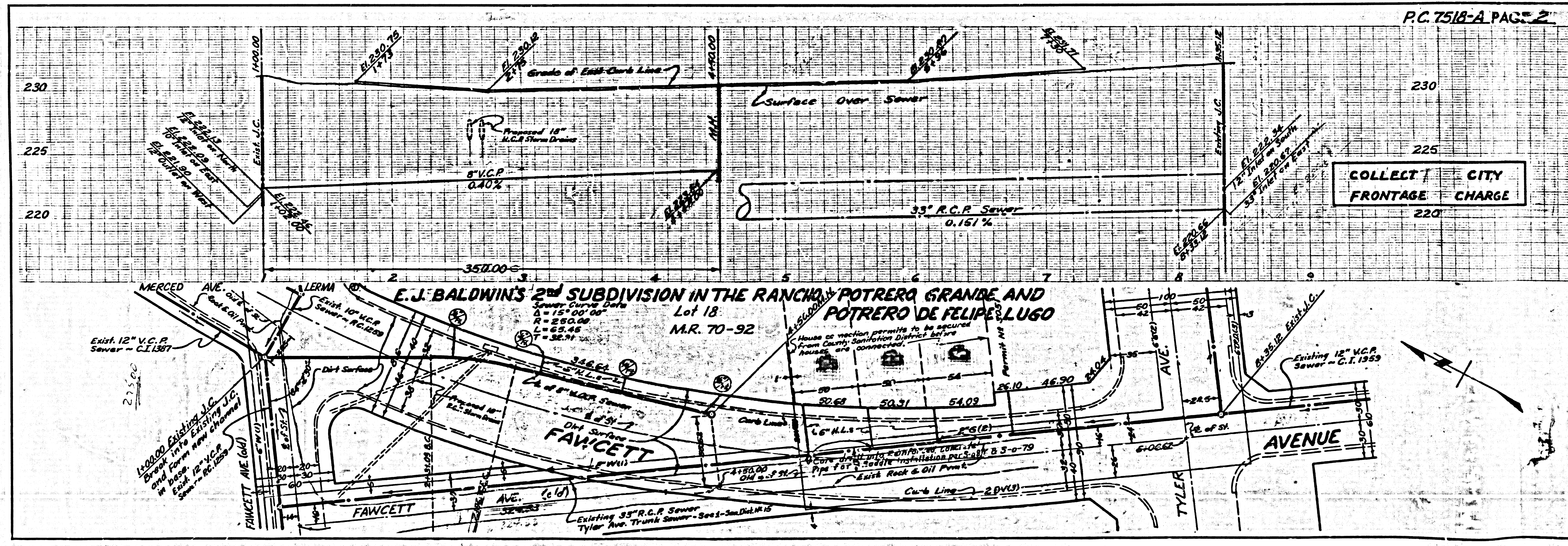
JOHN A. LAJBE CITY ENGINEER
APPROVED BY: [Signature]
RECOMMENDED BY: [Signature]
DESIGNED BY: [Signature]

WORK SHALL BE CONSTRUCTED ACCORDING TO STANDARD SPECIFICATIONS DATED MAY 25, 1962, AS PREPARED ON FILE IN THE OFFICE OF THE CITY ENGINEER AND SHALL BE PROTECTED DURING THE CONSTRUCTION BY THE CITY ENGINEER.
GRADES TO WHICH THIS IMPROVEMENT IS TO BE CONSTRUCTED ARE SHOWN ON PLANS AND PROFILE GRADE POINTS FOR TOP OF CURB, CENTER LINE OF STREET OR CENTER LINE OF ALLEY ARE SHOWN BY CIRCLES ON PROFILES AT ALL POINTS BETWEEN DESIGNATED POINTS THE GRADE SHALL BE ESTABLISHED SO AS TO CONFORM TO A STRAIGHT LINE DRAWN BETWEEN SAID DESIGNATED POINTS.
ELEVATIONS ARE IN FEET ABOVE M.S.L. & U.S. SEA LEVEL DATUM OF 1929.
UNIT PRICES FOR ADDITIONAL WORK WHICH MAY BE REQUIRED BUT WHICH CANNOT BE ASCERTAINED IN ADVANCE SHALL BE SUBMITTED IN THE PROPOSAL.
THIS DRAWING AND THE DATA HEREON ARE HEREBY MADE A PART OF THE SPECIFICATIONS.

LAYOUT	L. JAIME	JAN 66	UNDERGROUND	R.V. SCOTT	2-8-66
TRACED	L. JAIME	JAN 66	BENCH MARKS	J. J. LAIGAN	2-8-66
CHECKED	F. YOUNGDAHL	JAN 66	MAINTENANCE		
F.B. 3317			INSPECTOR		
A.B. 3116		W.S. 37	RECORD PLANS		

3333A 5 70 S & 1 2334A

Trim Line



PAGES 1 & 2 OF 2 PAGES

Trim Line

FAWCETT AVE
P.C. 7518-A

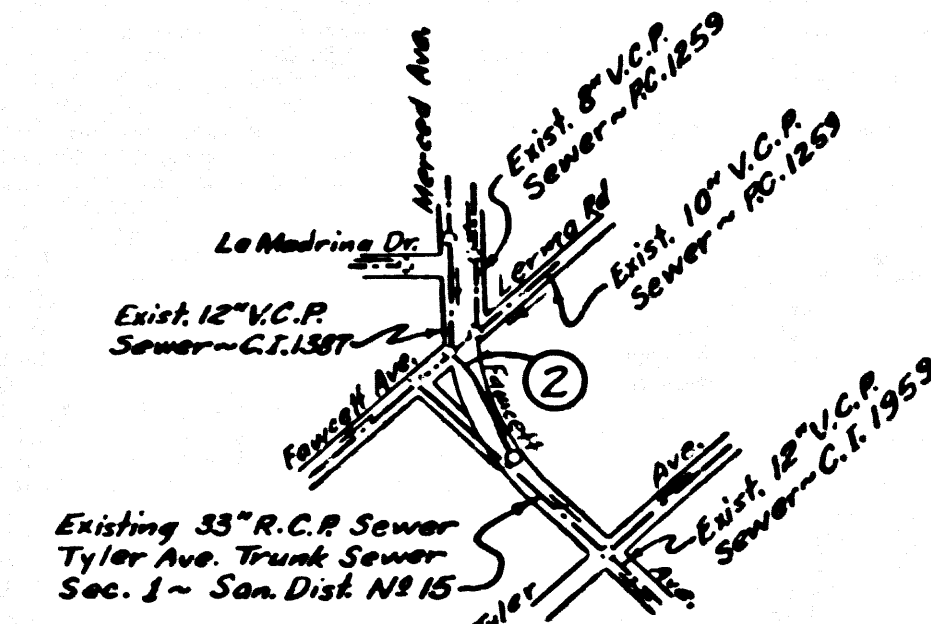
Trim Line

A-8125.29

ANA TTECINIA

Trim Line

B.M. S.D. 707 ELEV. 231.175
F.B. 3317-8 MERCED AVE. & LERMA RD.
N.E. COR. BT. SPK. IN CB. 20' E.
OF E'Y C.R.



INDEX MAP
FAWCETT AVE. P.C. 7518-A
Scale: 1"=600'

② INDICATES PAGE NUMBER

SOUTH EL MONTE BUILDING DISTRICT No. 5.04

PRIVATE CONTRACT NO. 7518-A

PROFILE, ALIGNMENT AND GRADE OF
SANITARY SEWERS
TO BE CONSTRUCTED IN
FAWCETT AVENUE
AND OTHER RIGHTS OF WAY

1 SHEETS, 2 PAGES
JANUARY 1966
CITY OF SOUTH EL MONTE, CALIFORNIA

JOHN A. LAMBIE CITY ENGINEER
APPROVED BY *[Signature]* J. D. PARKHURST
CHIEF ENGINEER OF COUNTY SANITATION DISTRICT NO. 18
RECOMMENDED BY *[Signature]* REGIONAL ENGINEER
DESIGNED BY *[Signature]* A. B. 8116
NO. C. E. NO. 3406

USE EXTRA STRENGTH PIPE, ALL PIPE IS STANDARD DEPTH EXCEPT AS NOTED.
USE MECHANICAL COMPRESSION JOINTS FOR ALL VITRIFIED CLAY PIPE SEWERS.
ALL STRUCTURES SHALL BE BRICK MANNHOLES, EXCEPT AS NOTED.
USE STANDARD MANNHOLE FRAMES AND COVERS, 24" X 24" X 4" HIGH.
USE FORMER NO. 2, SEC. 54 OF SPECIFICATIONS TO COMPUTE ALLOWABLE LEAKAGE.
CONSTRUCT HOUSE LATERALS WITH INVERTS AT PROPERTY LINE 4 FEET BELOW CURB GRADE, OR GRADE OF CENTER LINE OF STREET, EXCEPT AS NOTED.
FIGURES IN CIRCLES AT ENDS OF HOUSE LATERALS INDICATE DEPTH BELOW CURB GRADE, OR GRADE OF CENTER LINE OF STREET, EXCEPT AS NOTED.
FIGURES IN CIRCLES AT ENDS OF HOUSE LATERALS INDICATE HOUSE LATERALS SHALL BE CONSTRUCTED WITH 1/4" RISE PER FOOT TO PROPERTY LINE.
HOUSE LATERALS SHALL BE CONSTRUCTED IN A STRAIGHT ALIGNMENT AT RIGHT ANGLES FROM THE MAIN LINE SEWER EXCEPT AS SHOWN ON THE PLANS. HOUSE LATERALS FROM CHIMNEYS SHALL HAVE AN ANGLE OF LESS THAN 45 DEGREES WITH THE MAIN LINE SEWER.
ALL HOUSE LATERALS SHALL BE CONSTRUCTED IN A STRAIGHT ALIGNMENT AT RIGHT ANGLES FROM THE MAIN LINE SEWER EXCEPT AS SHOWN ON THE PLANS. HOUSE LATERALS FROM CHIMNEYS SHALL HAVE AN ANGLE OF LESS THAN 45 DEGREES WITH THE MAIN LINE SEWER.
THE CONTRACTOR SHALL NOTIFY THE CONSTRUCTION DIVISION BY TELEPHONE HADISON 9-047, EXT. 8153 AT LEAST 24 HOURS BEFORE STARTING ANY WORK UNDER THIS CONTRACT.
CONSTRUCTION IN STATE HIGHWAYS SHALL CONFORM WITH BRASS SIGNAGE PLANS AND THE CONTRACTOR SHALL PAY ALL COSTS IN CONNECTION THEREWITH.
ALL STATE AND LOCAL TRENCH SAFETY ORDERS WILL BE RIGIDLY ENFORCED.
RESURFACING SCHEDULE: RESURFACE TRENCH WITHIN PAVED AREA WITH FRENCH ROCK AND 2" INCHES IN THICKNESS OR 4" INCHES OF AGGREGATE BASE MATERIAL, EXCEPT AS NOTED BELOW.

RESURFACE TRENCH WITH TEMPORARY "STOCK PILE" PREMIX 2 INCHES IN THICKNESS.

PAGE NO.	STREET	STATION LIMITS	TYPE OF RESURFACING
		FROM TO	

ALL CONCRETE CROSS CUTTERS, CURBS, GUTTERS, PAYMENTS, AND DRIVEWAYS SHALL BE FURNISHED OR ORDERED PER LOS ANGELES COUNTY ROAD DEPARTMENT REQUIREMENTS.
THE FOLLOWING LATEST REVISED STANDARD PLANS ON FILE IN THE OFFICE OF CITY ENGINEER SHALL APPLY IN THE CONSTRUCTION OF THIS PROJECT:

SEWAGE	5-1
MINIMUM EXCAVATION SAFETY REQUIREMENTS	5-2
BRICK MANNHOLE	5-3
MANNHOLE FRAME AND COVER	5-10
MANNHOLE STEP	5-17
BEDDING FOR SEWER PIPE	5-21
SPECIAL SUPPORT AND PROTECTION	5-22
STANDARD WYE SUPPORT	5-23
STOPPER	5-24

- THE UNDERGROUND UTILITY COMPANIES WITHIN THE LIMITS OF THIS PROJECT ARE AS FOLLOWS:
- (1) SAN GABRIEL VALLEY WATER CO.
 - (2) SOUTHERN COUNTIES GAS CO.
 - (3) PACIFIC TELEPHONE CO.
 - (4)
- NO CONNECTIONS FOR THE DISPOSAL OF INDUSTRIAL WASTES SHALL BE MADE TO SEWERS SHOWN ON THESE DRAWINGS WITHOUT WRITTEN PERMISSION FROM THE CHIEF ENGINEER AND GENERAL MANAGER OF THE COUNTY SANITATION DISTRICTS.

NOTE:
WORK SHALL BE CONSTRUCTED ACCORDING TO STANDARD SPECIFICATIONS DATED May 25, 1962 as amended, ON FILE IN THE OFFICE OF THE CITY ENGINEER AND SHALL BE PROSECUTED ONLY IN THE PRESENCE OF THE CITY ENGINEER.
GRADES TO WHICH THE UNDERGROUND IS TO BE CONSTRUCTED ARE SHOWN ON PLANS AND PROFILE GRADE POINTS FOR TOP OF CURB, CENTER LINE OF STREET OR CENTER LINE OF ALLEY ARE SHOWN BY CIRCLES ON PROFILES AT ALL POINTS BETWEEN DESIGNATED POINTS THE GRADE SHALL BE ESTABLISHED TO 4" TO CONFORM TO A STRAIGHT LINE DRAWN BETWEEN SAID DESIGNATED POINTS.
ELEVATIONS ARE IN FEET ABOVE U.S.C. & G.S. SEA LEVEL DATUM OF 1929.
UNIT PRICES FOR ADDITIONAL WORK WHICH MAY BE REQUIRED BUT WHICH CANNOT BE ASCERTAINED IN ADVANCE, SHALL BE SUBMITTED IN THE PROPOSAL.
REVISIONS ARE IN FEET ABOVE U.S.C. & G.S. SEA LEVEL DATUM OF 1929.
THIS DRAWING AND THE DATA HEREON ARE NECESSARY MADE A PART OF THE SPECIFICATIONS.

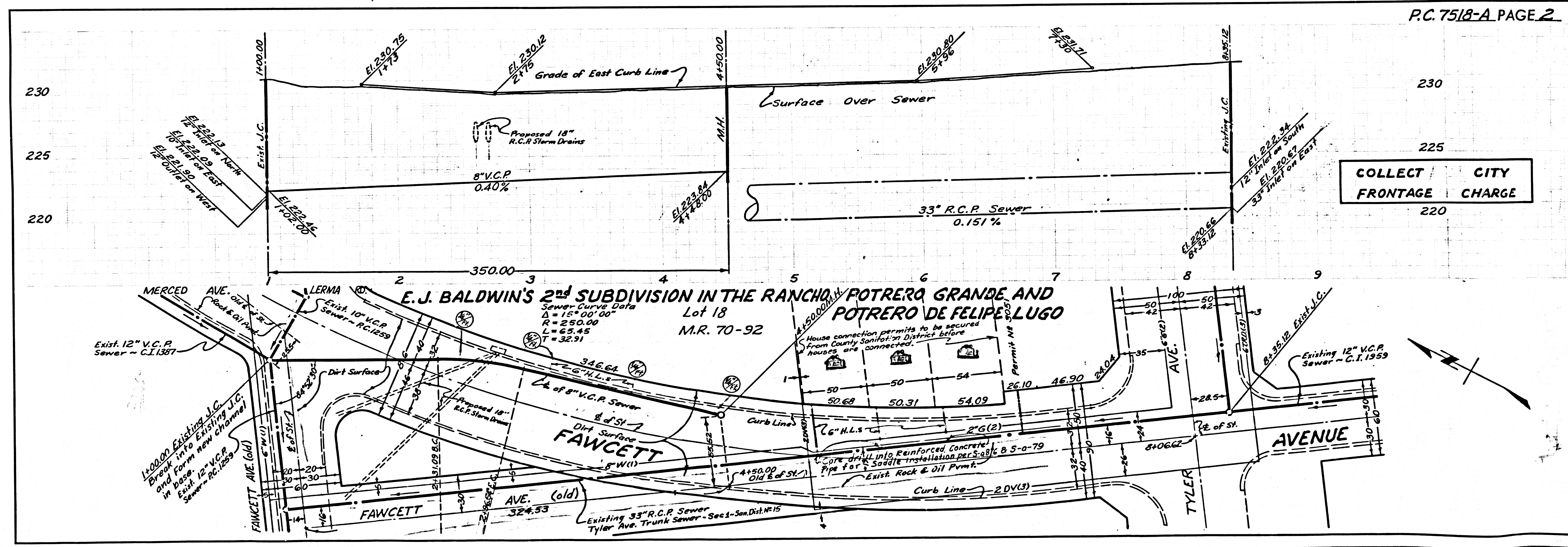
LAYOUT	L. JAIME	JAN '66	UNDERGROUND	R.W. Scott	2-8-66
TRACED	L. JAIME	JAN '66	BENCH MARKS	J.L. azizien	2-9-66
CHECKED	F. YOUNGDAHL	JAN '66	MAINTENANCE		
F. B. 3317			INSPECTOR		
A. B. 8116			RECORD PLANS		

PAGES 1 & 2 OF 5 PAGES

Trim Line

Trim Line

COPIES 5 TO 50 1 00000



COLLECT CITY FRONTAGE CHARGE

Trim Line

FAWCETT AVE

50.2800