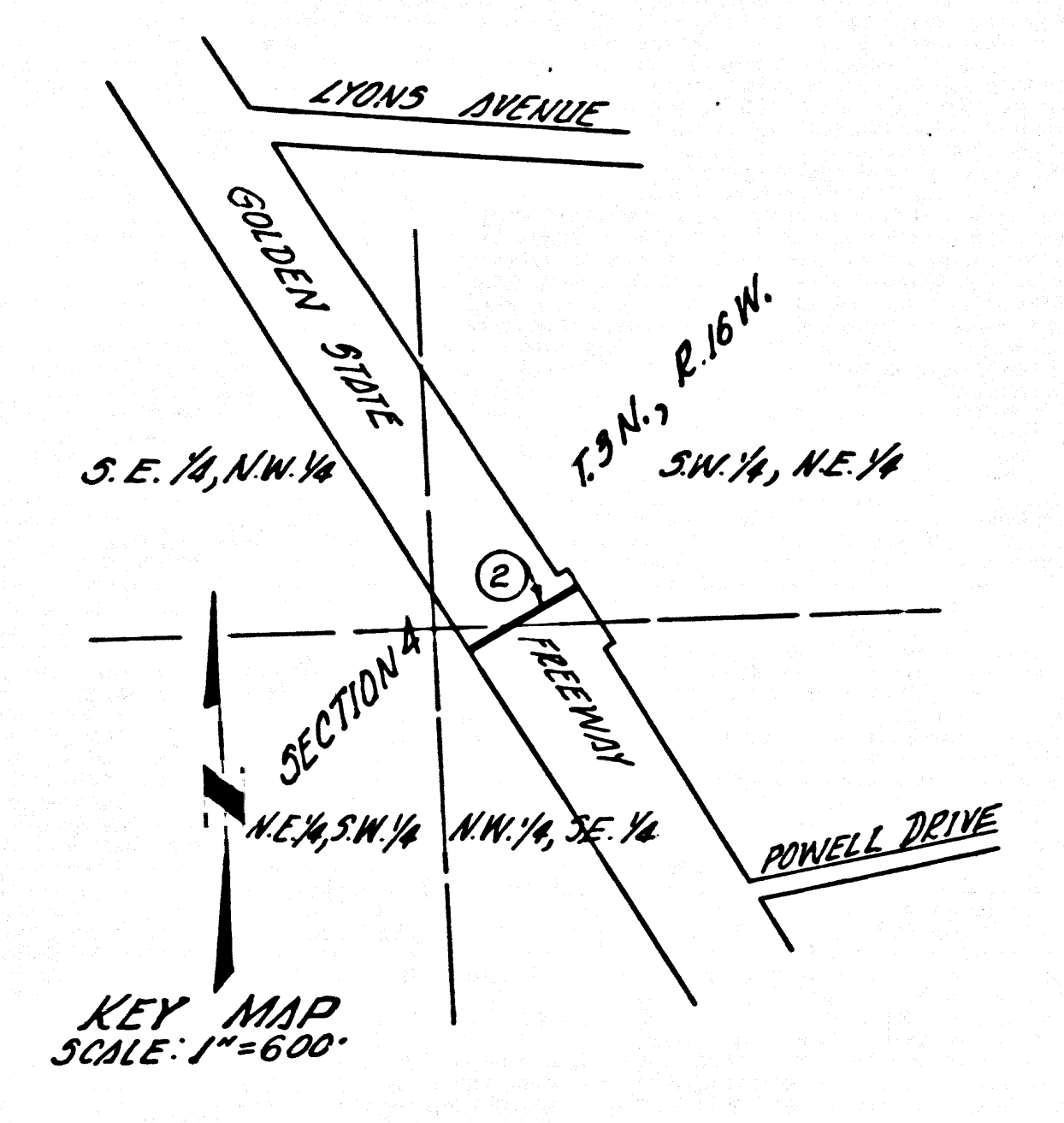


B.M. S.L. 642 ELEV. 1262.071
 ED. DEPT. B.M. 716 N. SIDE CONC. BASE
 AT N.E. COR. EDISON HIGH TENSION
 TOWER #A-37-343-3 255 301 8 LYONS
 AVE. F 30 17 E WILLEY CANYON RD.
 NEWHALL QUAD. 19 58



SPECIAL NOTE:
 NO CONNECTIONS TO BE MADE TO
 SEWERS SHOWN ON THESE PLANS
 UNTIL AN OUTLET HAS BEEN
 PROVIDED AND SEWER EASEMENT
 GRANTED TO COUNTY OF LOS ANGELES.

NEWHALL BLDG. DIST. NO.

1. PROVIDE STAKES ON THE PROPERTY LINE OR PROPERTY LINES PRODUCED AT RIGHT ANGLES TO THE SEWER LINE AT THE CENTER LINE OF EACH MANHOLE.
2. NO REPRESENTATIVE OF THE COUNTY ENGINEER WILL SURVEY OR LAY OUT ANY PORTION OF THE WORK.
3. THE PRIVATE ENGINEER SHALL FURNISH THE COUNTY ENGINEER WITH GRADE SHEETS AND STATIONING FOR ALL HOUSE LATERALS AND Y BRANCHES AND SHALL PROVIDE STAKES FOR THEM AT THEIR PROPER LOCATIONS WITH STATIONING PLAINLY MARKED. ALL HOUSE LATERALS SHALL BE CONSTRUCTED AT A STRAIGHT ALIGNMENT AT RIGHT ANGLES FROM THE MAIN LINE SEWER EXCEPT AS SHOWN ON THE PLANS. HOUSE LATERALS FROM CHIMNEYS SHALL NOT HAVE AN ANGLE OF LESS THAN 45° WITH THE MAIN LINE SEWER. ANY CHANGE IN ALIGNMENT SHALL BE REQUESTED IN WRITING BY THE PRIVATE ENGINEER.
4. THE PRIVATE ENGINEER SHALL FURNISH THE HOUSE LATERAL DEPTH AT THE PROPERTY LINE BELOW THE TOP OF CURB ELEVATION FOR EACH HOUSE LATERAL ON THE GRADE SHEET.
5. NO REVISIONS SHALL BE MADE IN THESE PLANS WITHOUT THE APPROVAL OF THE COUNTY ENGINEER.
6. THE CONTRACTOR SHALL NOTIFY THE CONSTRUCTION DIVISION BY TELEPHONE, MADISON 7-4747, EXT. 8158, AT LEAST TWENTY-FOUR HOURS BEFORE STARTING ANY WORK UNDER THIS CONTRACT.
7. MANHOLES SHALL BE UNDER SEWER STRUCTURES PER S-6-64. PRECAST CONCRETE MANHOLES PER S-6-255 OR S-6-173 MAY BE USED AS AN ALTERNATE IN LOCATIONS APPROVED BY THE COUNTY ENGINEER.
8. USE STANDARD MANHOLE FRAMES AND COVERS, S-6-117, EXCEPT AS NOTED.
9. MANHOLE TOPS IN UNIMPROVED RIGHTS-OF-WAY TO BE SIX INCHES ABOVE FINISHED GRADE.
10. USE KCP/CIP PIPE. ALL PIPE IS STANDARD DEPTH EXCEPT AS NOTED.
11. USE CEMENT MORTAR MECHANICAL COMPRESSION JOINTS FOR ALL K.C.P. JOINTS PER SPEC., SECT. 36 & 46.
12. WHENEVER EXCESS WATER IS ENCOUNTERED DURING THE CONSTRUCTION OF THE SEWER, THE EXCESS WATER SHALL BE OF SOFT CONDITION PER SPEC., SECT. 36-46 & 46, OR MECHANICAL COMPRESSION JOINTS PER SPEC., SECT. 36-46.
13. IF A POWER POLE IS WITHIN THREE FEET OF THE SEWER, THE SEWER SHALL BE ENCASED, PER S-6-172, CASE III, TWO FEET ON EITHER SIDE FROM THE POINT OF INTERFERENCE.
14. IF DURING THE COURSE OF CONSTRUCTION IT IS DETERMINED THAT THERE IS LESS THAN FOUR FEET OF COVER OVER THE TOP OF A MAIN LINE OR HOUSE LATERAL K.C.P. SEWER WHICH IS NOT INDICATED ON THE PLANS, THE PIPE SHALL BE ENCASED PER S-6-172, CASE III, UNLESS OTHERWISE APPROVED BY THE COUNTY ENGINEER.
15. HOUSE LATERALS TO BE CONSTRUCTED UNDER SEWERS AS INDICATED AND SHALL BE ENCASED PER SPEC. SECT. 36-46.
16. RESURFACE ALL TRENCHES WITHIN PAVED AREAS TO MEET L.A. COUNTY ROAD DEPT. OR CALIFORNIA STATE HIGHWAY REQUIREMENTS IN ACCORDANCE WITH PERMITS.
17. FOR ALLOWABLE LEAKAGE TEST USE FORMULA NO. 1, SPEC., SECT. 64.
18. ALL TRENCH SAFETY ORDERS WILL BE STRICTLY ENFORCED.

PROFILE ALIGNMENT AND GRADE OF **P.C. 7521**
SANITARY SEWERS PAGE **1**

TO BE CONSTRUCTED IN
GOLDEN STATE FREEWAY CROSSING
 1600 FEET SOUTHEAST OF LYONS AVENUE

PRIVATE CONTRACT NO. 7521

W.S.
 1 SHEETS; 2 PAGES
 SCALE: VERT. 1"=4' HORIZ. 1"=40' DECEMBER, 1965

PREPARED IN THE OFFICES OF
JENNINGS ENGINEERING CO.
 24811 SAN FERNANDO ROAD, NEWHALL, CALIF.
 BY: *E. J. Jennings*
 REG. C. E. NO. 7858

39086

FOR LEGEND SEE PLAN NO. S-64

NOTE:
 GRADES TO WHICH THIS IMPROVEMENT IS TO BE CONSTRUCTED ARE SHOWN ON PLANS AND PROFILES. GRADE POINTS FOR TOP OF CURBS, CENTER LINE OF STREETS, OR CENTER LINE OF ALLEYS ARE SHOWN BY CIRCLES ON PROFILES. AT ALL POINTS BETWEEN DESIGNATED POINTS THE GRADE SHALL BE ESTABLISHED SO AS TO CONFORM TO A STRAIGHT LINE DRAWN BETWEEN SAID DESIGNATED POINTS. ELEVATIONS ARE IN FEET ABOVE U.S.C. & G.S. MEAN SEA LEVEL DATUM OF 1929. THIS DRAWING AND THE DATA HEREON ARE HEREBY MADE A PART OF THE SPECIFICATIONS. WORK SHALL BE CONSTRUCTED ACCORDING TO STANDARD SPECIFICATIONS DATED MAY 22, 1965, ON FILE IN THE OFFICE OF THE COUNTY ENGINEER AND SHALL BE PROSECUTED ONLY IN THE PRESENCE OF THE COUNTY ENGINEER. BIDDING WORK CAN BE STARTED. THE CONTRACTOR MUST OBTAIN A PERMIT TO EXCAVATE IN COUNTY STREETS FROM THE L.A. COUNTY ROAD DEPT., DISTRICT OFFICE NO. 1, 5777 AND PAY A FEE TO THE COUNTY ENGINEER, ROOM 303, COUNTY ENGINEERING BUILDING, 100 WEST SECOND STREET, LOS ANGELES, CALIF. 90012. REGIONAL OFFICE, SUPPORT TO COVER THE COST OF CONSTRUCTION INSPECTION AND RECORD PLANS. REFERRAL OF THIS PLAN BY THE COUNTY OF LOS ANGELES DOES NOT CONSTITUTE A REPRESENTATION AS TO THE ACCURACY OF THE LOCAL OR OF THE EXISTENCE OR NON-EXISTENCE OF ANY UNDERGROUND UTILITY PIPE, OR STRUCTURE WITHIN THE LIMITS OF THIS PROJECT. THIS NOTE APPLIES TO ALL PAGES. IF WORK IS TO BE DONE IN A STATE HIGHWAY, A PERMIT MUST BE OBTAINED FROM THE STATE OF CALIFORNIA, DIVISION OF HIGHWAYS, 129 SOUTH SPRING STREET, LOS ANGELES, CALIFORNIA.

COUNTY OF LOS ANGELES, CALIFORNIA
 JOHN A. LAMBIE, COUNTY ENGINEER

APPROVED BY: *Clare K. K...*
 ASSISTANT SANITATION ENGINEER

SUBMITTED BY: *John W. Anderson*
 PROFESSIONAL

CHECKED BY: *Ralph A. ...* 12/17/65
 REG. C. E. NO. 13926

J. N. 0366.72

COLLECT CHARGES AS INDICATED

P. C. 7521 PAGE 2

DOUBLE SCALE

SEE SPECIAL NOTE ON PAGE 1

39087

