

B.M. 51 177708 (L.M. 5106) ELEV. 1041.061  
 1/4 SEC. 6 S. 1/4 T. 37D N. 11W. R. 14E  
 9' S.W. track 4 8.5 mi. w. along Santa  
 Paula Branch S.P.R.R. from Saugus sta.  
 Map 17 370 1963  
 NEWHALL QUAD. 19 58

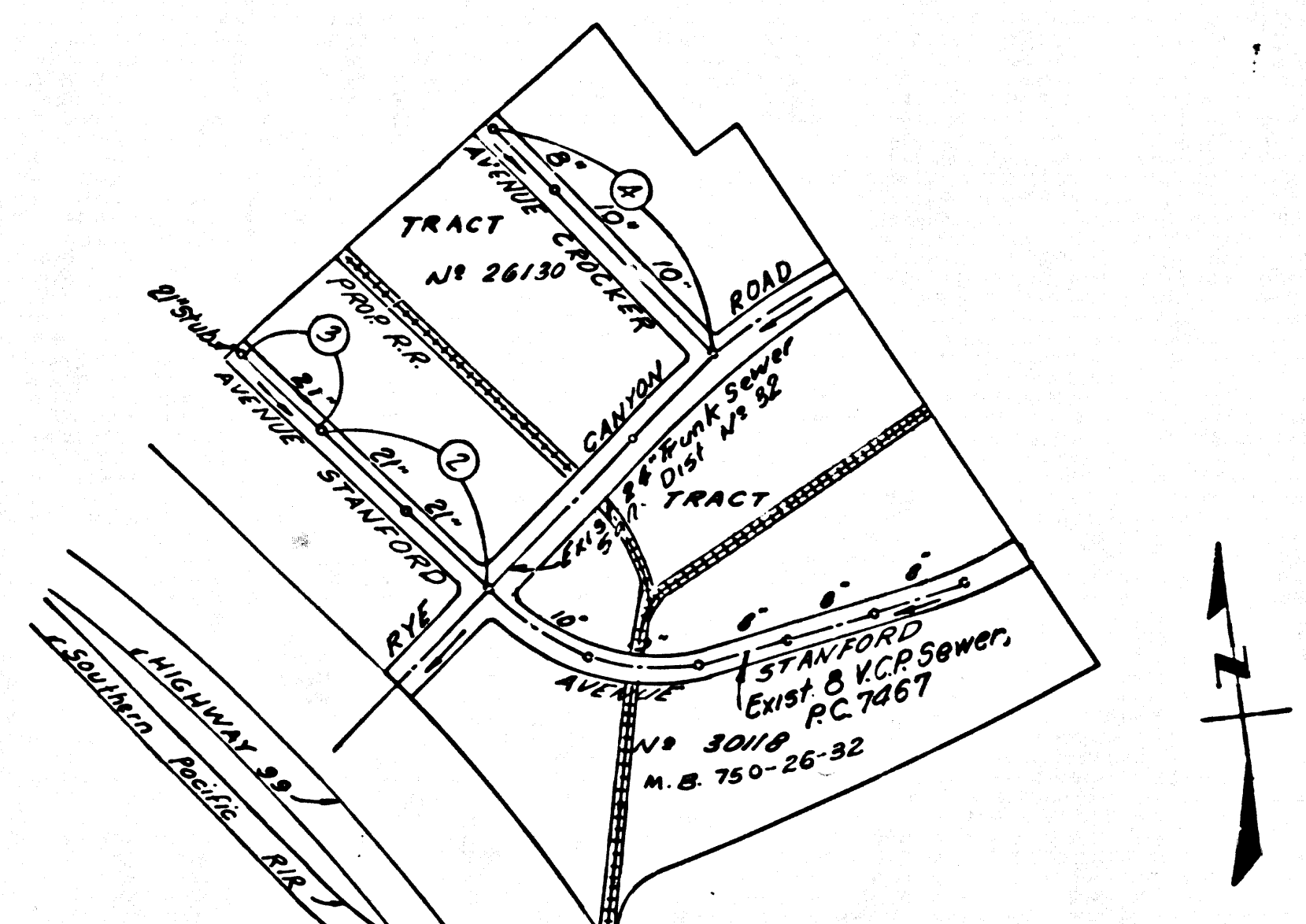
**REVISIONS**  
 1. Relocate M.H. at Sta. 11+00, page 3, to Sta. 10+91.00.  
 Ralph K. ... APPROVED 4/11/66

**NEWHALL BLDG. DIST. NO. 8.2**

PROFILE ALIGNMENT AND GRADE OF  
**SANITARY SEWERS** PAGE 1  
 TO BE CONSTRUCTED IN  
 TRACT No 26130

**PRIVATE CONTRACT NO. 7525**

W.S. 63  
 2 SHEETS, 4 PAGES  
 SCALE: HORIZ. 1"=40' VERT. 1"=4'  
 DATE: OCTOBER, 1965  
 38784  
 PREPARED IN THE OFFICES OF  
 DEVELOPMENT CONSULTANTS INC.  
 ENGINEERING DIVISION  
 1001 EAST COLORADO BLVD., PASADENA, CALIF.  
 BY: John R. ... REG. C. E. NO. 3812  
 FOR LEGEND SEE PLAN NO. S-1



NOTE: Number in circle represent page numbers

**INDEX MAP**  
 TRACT No 26130  
 P. C. No 7525  
 Scale 1"=600'

1. PROVIDE STAKES ON THE PROPERTY LINE OR PROPERTY LINES PRODUCED AT RIGHT ANGLES TO THE SEWER LINE AT THE CENTER LINE OF EACH MANHOLE.
2. NO REPRESENTATIVE OF THE COUNTY ENGINEER WILL SURVEY OR LAY OUT ANY PORTION OF THE WORK.
3. THE PRIVATE ENGINEER SHALL FURNISH THE COUNTY ENGINEER WITH GRADE SHEETS AND STAKING FOR ALL HOUSE LATERALS AND Y BRANCHES AND SHALL PROVIDE STAKES FOR THEM AT THEIR PROPER LOCATIONS WITH STATIONING PLAINLY MARKED. ALL HOUSE LATERALS SHALL BE CONSTRUCTED IN A STRAIGHT ALIGNMENT AT RIGHT ANGLES FROM THE MAIN LINE SEWER EXCEPT AS SHOWN ON THE PLANS. HOUSE LATERALS FROM CHIMNEYS SHALL NOT HAVE AN ANGLE OF LESS THAN 45° WITH THE MAIN LINE SEWER. ANY CHANGE IN ALIGNMENT SHALL BE REQUESTED IN WRITING BY THE PRIVATE ENGINEER.
4. THE PRIVATE ENGINEER SHALL FURNISH THE HOUSE LATERAL DEPTH AT THE PROPERTY LINE BELOW THE TOP OF CURB ELEVATION FOR EACH HOUSE LATERAL ON THE GRADE SHEET.
5. NO REVISIONS SHALL BE MADE IN THESE PLANS WITHOUT THE APPROVAL OF THE COUNTY ENGINEER.
6. THE CONTRACTOR SHALL NOTIFY THE CONSTRUCTION DIVISION BY TELEPHONE, MADISON 9-4747, EXT. 8188, AT LEAST TWENTY-FOUR HOURS BEFORE STARTING ANY WORK UNDER THIS CONTRACT.
7. MANHOLES SHALL BE BRICK SEWER STRUCTURES PER S-5 PRECAST CONCRETE MANHOLES PER S-6 OR S-6 MAY BE USED AS AN ALTERNATE IN LOCATIONS APPROVED BY THE COUNTY ENGINEER.
8. USE STANDARD MANHOLE FRAMES AND COVERS, S-28, EXCEPT AS NOTED.
9. MANHOLE TOPS IN UNIMPROVED RIGHTS-OF-WAY TO BE SIX INCHES ABOVE FINISHED GRADE.
10. USE EXTRA STRENGTH PIPE. ALL PIPE IS STANDARD DEPTH EXCEPT AS NOTED.
11. USE CEMENT-PORTLAND MECHANICAL COMPRESSION JOINTS FOR ALL V.C.P. JOINTS PER SPECS., SECS. 34 & 40.145
12. WHERE FIVE GROUND WATER IS ENCOUNTERED DURING THE CONSTRUCTION OF THE SEWERS, THE V.C.P. JOINTS SHALL BE OF SOME COMPROMISED PER SPECS., SECS. 34 & 40, OR MECHANICAL COMPRESSION JOINTS PER SPECS., SECS. 34 & 40.
13. IF A POWER POLE IS WITHIN THREE FEET OF THE SEWER, THE SEWER SHALL BE ENCASED, PER S-28, TWO FEET ON EACH SIDE FROM THE POINT OF INTERFERENCE.
14. IF DURING THE COURSE OF CONSTRUCTION IT IS DETERMINED THAT THERE IS LESS THAN FOUR FEET OF COVER OVER THE TOP OF A MAIN LINE OR HOUSE LATERAL V.C.P. SEWER WHICH IS NOT INDICATED ON THE PLANS, THE PIPE SHALL BE ENCASED PER S-28 UNLESS OTHERWISE APPROVED BY THE COUNTY ENGINEER.
15. HOUSE LATERALS TO BE CONSTRUCTED WITH INVERTS AT PROPERTY LINE... FEET BELOW CURB GRADE EXCEPT AS NOTED.
16. RESURFACE ALL TRENCHES WITHIN PAVED AREAS TO MEET L.A. COUNTY ROAD DEPT. OR CALIFORNIA STATE HIGHWAY REQUIREMENTS IN ACCORDANCE WITH PERMITS.
17. FOR ALLOWABLE LEAKAGE TEST USE FORMULA NO. 2, SPECS., SEC. 84.
18. ALL STATE AND LOCAL TRENCH SAFETY ORDERS WILL BE RIGIDLY ENFORCED.

NO CONNECTIONS FOR THE DISPOSAL OF INDUSTRIAL WASTES SHALL BE MADE TO SEWERS SHOWN ON THESE DRAWINGS WITHOUT WRITTEN PERMISSION FROM THE CHIEF ENGINEER AND GENERAL MANAGER OF THE COUNTY SANITATION DISTRICTS.

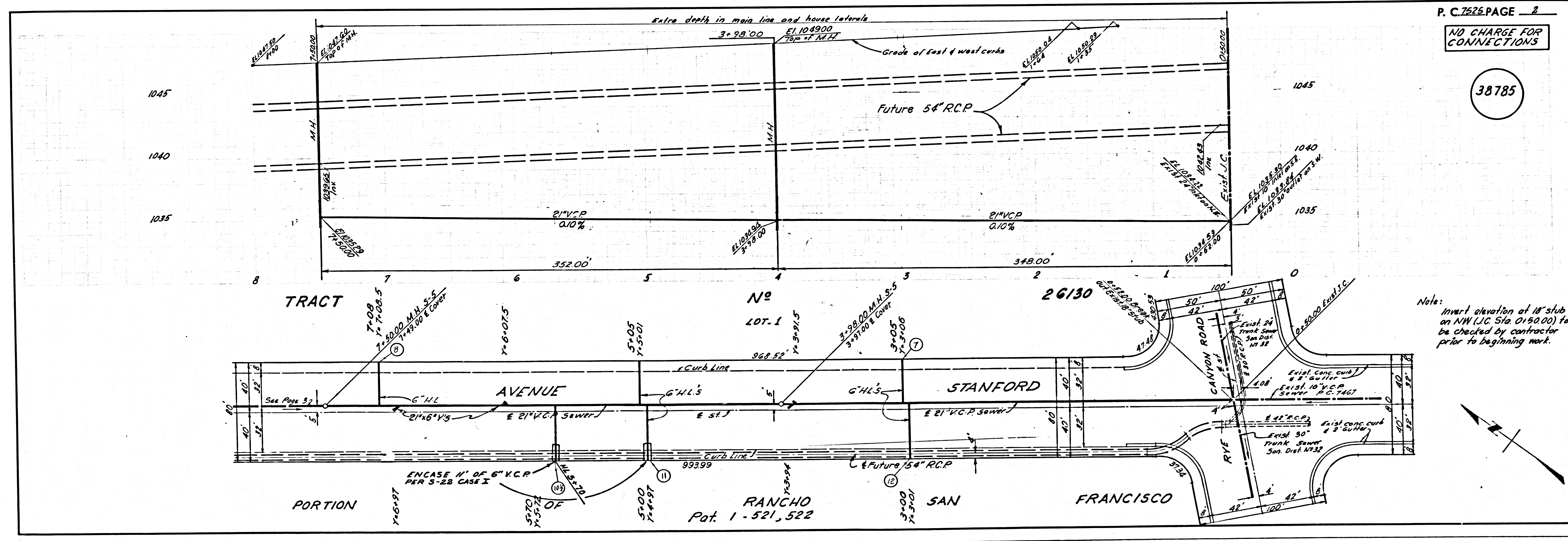
BEFORE BREAKING INTO ANY EXISTING STRUCTURE AND BEFORE FINAL ACCEPTANCE OF THIS WORK, COUNTY SANITATION DISTRICT (DU 4-1281) SHALL BE NOTIFIED IN ORDER THAT REQUIRED INSPECTION CAN BE MADE.

**COLLECT CHARGES AS INDICATED**  
 (Signature)

NO CHARGE FOR CONNECTIONS  
 (Signature)  
 INDUSTRIAL WASTE

NOTE:  
 GRADES TO WHICH THE IMPROVEMENT IS TO BE CONSTRUCTED ARE SHOWN ON PLANS AND PROFILES. GRADE POINTS FOR TOP OF CURB, CENTER LINE OF STREETS, OR CENTER LINE OF ALLEYS ARE SHOWN BY CIRCLES ON PROFILES. AT ALL POINTS BETWEEN DESIGNATED POINTS THE GRADE SHALL BE ESTABLISHED SO AS TO CONFORM TO A STRAIGHT LINE DRAWN BETWEEN SAID DESIGNATED POINTS. ELEVATIONS ARE IN FEET ABOVE U.S.C. & G.S. SEA LEVEL DATUM OF 1929.  
 THIS DRAWING AND THE DATA HEREON ARE HEREBY MADE A PART OF THE SPECIFICATIONS.  
 WHERE WORK CAN BE STARTED, THE CONTRACTOR MUST OBTAIN A PERMIT TO EXCAVATE IN COUNTY STREETS FROM THE L.A. COUNTY ROAD DEPT., DISTRICT OFFICE NO. 5, AND PAY A FEE TO THE COUNTY ENGINEER, ROOM 300, COUNTY ENGINEERING BUILDING, 100 WEST SECOND STREET, PASADENA, CALIF. REGIONAL OFFICE, SUFFICIENT TO COVER THE COST OF CONSTRUCTION INSPECTION AND RECORD PLANS.  
 APPROVAL OF THIS PLAN BY THE COUNTY OF LOS ANGELES DOES NOT CONSTITUTE A REPRESENTATION AS TO THE ACCURACY OF THE LOCATION OF OR THE EXISTENCE OR NON-EXISTENCE OF ANY UNDERGROUND UTILITY PIPE, OR STRUCTURE WITHIN THE LIMITS OF THIS PROJECT. THIS NOTICE APPLIES TO ALL PAGES.  
 IF WORK IS TO BE DONE IN A STATE HIGHWAY, A PERMIT MUST BE OBTAINED FROM THE STATE OF CALIFORNIA, DIVISION OF HIGHWAYS, 180 SOUTH SPRING STREET, LOS ANGELES, CALIFORNIA.

**COUNTY OF LOS ANGELES, CALIFORNIA**  
 JOHN A. LAMBIE, COUNTY ENGINEER J. D. PARKHURST, CHIEF ENGINEER  
 CO. SAN. DIST. 8.2  
 APPROVED BY: (Signature) ASSISTANT SANITATION ENGINEER APPROVED BY: (Signature) OFFICE ENGINEER  
 CHECKED BY: (Signature) DATE: 3/11/66  
 W.S. CE NO. 13466  
 J. N. 0366.76



P. C. 7525 PAGE 2  
 NO CHARGE FOR CONNECTIONS  
 38785

Note: Invert elevation of 18\"/>



