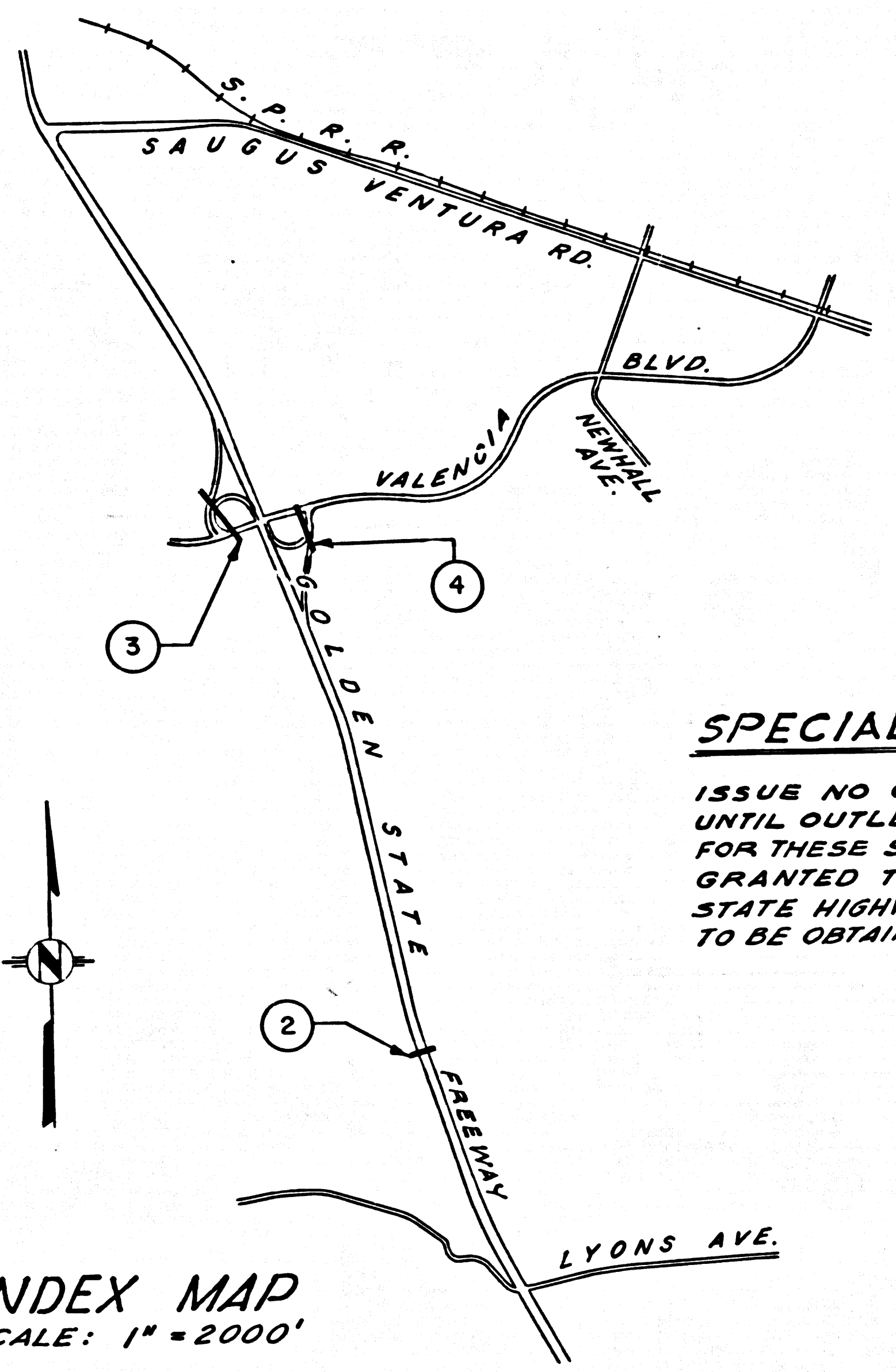


B.M. #30-F-40 ELEV. 1328.21
BRONZE TABLET IN CONC. MON.
STAMPED "30-F-40" 48" LEFT
OF & CONST. STA. 272+96.00
STATE DIVISION OF HIGHWAYS

B.M. #5L 1793 ELEV. 1328.076
STATE B.M. MON. 2 IN UP ON NE COR. GOLDEN
STATE HWY & LYONS AVE 24 FT N.E.
75 FT E APPROX. C/L INT MKD
(B.M. 30-F-40)
NEWHALL 1958



INDEX MAP
SCALE: 1" = 2000'

SPECIAL NOTE

ISSUE NO CONNECTION PERMITS
UNTIL OUTLETS HAVE BEEN PROVIDED
FOR THESE SEWERS AND EASEMENTS
GRANTED TO COUNTY OF LOS ANGELES.
STATE HIGHWAY ENCROACHMENT PERMITS
TO BE OBTAINED AS REQUIRED.

NEWHALL BLDG. DIST. NO. 8.2

- NOTE:
- PROVIDE STAKES ON THE PROPERTY LINE OR PROPERTY LINES PRODUCED AT RIGHT ANGLES TO THE SEWER LINE AT THE CENTER LINE OF EACH MANHOLE.
 - NO REPRESENTATIVE OF THE COUNTY ENGINEER WILL SURVEY OR LAY OUT ANY PORTION OF THE WORK.
 - THE PRIVATE ENGINEER SHALL FURNISH THE COUNTY ENGINEER WITH GRADE SHEETS AND STATIONING FOR ALL HOUSE LATERALS AND "T" BRANCHES AND SHALL PROVIDE STAKES FOR THEM AT THEIR PROPER LOCATIONS WITH STATIONING PLAINLY MARKED. ALL HOUSE LATERALS SHALL BE CONSTRUCTED IN A STRAIGHT ALIGNMENT AT RIGHT ANGLES FROM THE MAIN LINE SEWER EXCEPT AS SHOWN ON THE PLANS. HOUSE LATERALS FROM CHIMNEYS SHALL NOT HAVE AN ANGLE OF LESS THAN 45° WITH THE MAIN LINE SEWER. ANY CHANGE IN ALIGNMENT SHALL BE REQUESTED IN WRITING BY THE PRIVATE ENGINEER.
 - THE PRIVATE ENGINEER SHALL FURNISH THE HOUSE LATERAL DEPTH AT THE PROPERTY LINE BELOW THE TOP OF CURB ELEVATION FOR EACH HOUSE LATERAL ON THE GRADE SHEET.
 - NO REVISIONS SHALL BE MADE IN THESE PLANS WITHOUT THE APPROVAL OF THE COUNTY ENGINEER.
 - THE CONTRACTOR SHALL NOTIFY THE CONSTRUCTION DIVISION BY TELEPHONE, MADISON 9-0707, EXT. 8153, AT LEAST TWENTY-FOUR HOURS BEFORE STARTING ANY WORK UNDER THIS CONTRACT.
 - MANHOLES SHALL BE 18" DIA. PRECAST CONCRETE MANHOLES PER S-8 OR S-4 MAY BE USED AS AN ALTERNATE IN LOCATIONS APPROVED BY THE COUNTY ENGINEER.
 - USE STANDARD MANHOLE FRAMES AND COVERS, S-15, EXCEPT AS NOTED.
 - MANHOLE TOPS IN UNIMPROVED RIGHTS-OF-WAY TO BE SIX INCHES ABOVE FINISHED GRADE.
 - USE EXTRA STRENGTH PIPE. ALL PIPE IS STANDARD DEPTH EXCEPT AS NOTED.
 - USE MECHANICAL COMPRESSION JOINTS FOR ALL V.C.P. JOINTS PER SPECS., SECS. 36, 48 & 49.
 - IF A POWER POLE IS WITHIN THREE FEET OF THE SEWER, THE SEWER SHALL BE ENCASED, PER S-23, TWO FEET ON EACH SIDE FROM THE POINT OF INTERFERENCE.
 - IF DURING THE COURSE OF CONSTRUCTION IT IS DETERMINED THAT THERE IS LESS THAN FOUR FEET OF COVER OVER THE TOP OF A MAIN LINE OR HOUSE LATERAL V.C.P. SEWER WHICH IS NOT INDICATED ON THE PLANS, THE PIPE SHALL BE ENCASED PER S-23, UNLESS OTHERWISE APPROVED BY THE COUNTY ENGINEER.
 - HOUSE LATERALS TO BE CONSTRUCTED WITH INVERTS AT PROPERTY LINE 6 FEET BELOW CURB GRADE EXCEPT AS NOTED.
 - RESURFACE ALL TRENCHES WITHIN PAVED AREAS TO MEET L.A. COUNTY ROAD DEPT. OR CALIFORNIA STATE HIGHWAY REQUIREMENTS IN ACCORDANCE WITH PERMITS.
 - FOR ALLOWABLE LEAKAGE TEST USE FORMULA NO. 5, SPEC. 1, SEC. 54.
 - ALL STATE AND LOCAL TESTER SAFETY ORDERS WILL BE STRICTLY ENFORCED.
 - (a) NO CONSTRUCTION WILL BE PERMITTED IN FILLED AREAS UNLESS ACCEPTABLE CERTIFICATION IS SUBMITTED TO THE CONSTRUCTION DIVISION OF THE COUNTY ENGINEER'S DEPARTMENT THAT RELATIVE COMPACTION IS GREATER THAN 80%.
 - (b) IF COMPACTION IS LESS THAN 90% THE SEWER MUST BE CRADLED AS SHOWN ON THE PLANS PER S-23 AND M.H. BASES CONSTRUCTED PER S-14.
 - (c) IF COMPACTION IS GREATER THAN 90% SPECIAL CRADLING AND M.H. BASES PER S-14 ARE NOT REQUIRED.

COLLECT CHARGES AS INDICATED
Ralph Schep

NO CONNECTIONS FOR THE DISPOSAL OF INDUSTRIAL WASTES SHALL BE MADE TO SEWERS SHOWN ON THESE DRAWINGS WITHOUT WRITTEN PERMISSION FROM THE CHIEF ENGINEER AND GENERAL MANAGER OF THE COUNTY SANITATION DISTRICTS.

TO BE CONSTRUCTED IN
**CROSSINGS OF
GOLDEN STATE FREEWAY**
PRIVATE CONTRACT NO. 7526

W.S.
2 SHEETS, 4 PAGES
SCALE: HORIZ. 1" = 80' VERT. 1" = 8'
DECEMBER, 1965

39314

PREPARED IN THE OFFICES OF
QUINTON ENGINEERS, LTD.
312 W. 8TH ST. LOS ANGELES, CALIF.
By: *Martin Wilson*
REG. C.E. NO. 13005

FOR LEGEND SEE PLAN NO. S-1

NOTE:
GRADES TO WHICH THIS IMPROVEMENT IS TO BE CONSTRUCTED ARE SHOWN ON PLANS AND PROFILES. GRADE POINTS FOR TOP OF CURBS, CENTER LINE OF STREETS, OR CENTER LINE OF ALLEYS ARE SHOWN BY CIRCLES ON PROFILES. AT ALL POINTS BETWEEN DESIGNATED POINTS THE GRADE SHALL BE ESTABLISHED SO AS TO CONFORM TO A STRAIGHT LINE DRAWN BETWEEN SAID DESIGNATED POINTS. ELEVATIONS ARE IN FEET ABOVE U.S.C. & G.S. SEA LEVEL DATUM OF 1929.
THIS DRAWING AND THE DATA HEREON ARE HEREBY MADE A PART OF THE SPECIFICATIONS.
THE CONTRACTOR SHALL BE RESPONSIBLE FOR OBTAINING ALL NECESSARY PERMITS TO EXCAVATE IN COUNTY STREETS FROM THE L.A. COUNTY ENGINEER AND SHALL BE PROSECUTED ONLY IN THE PRESENCE OF THE COUNTY ENGINEER.
APPROVAL OF THIS PLAN BY THE COUNTY OF LOS ANGELES DOES NOT CONSTITUTE A REPRESENTATION AS TO THE ACCURACY OF THE LOCATION OR OF THE EXISTENCE OR NON-EXISTENCE OF ANY UNDERGROUND UTILITY PIPE, OR STRUCTURE WITHIN THE LIMITS OF THIS PROJECT. THIS NOTE APPLIES TO ALL PAGES.
IF WORK IS TO BE DONE IN A STATE HIGHWAY, A PERMIT MUST BE OBTAINED FROM THE STATE OF CALIFORNIA, DIVISION OF HIGHWAYS, 126 SOUTH SPRING STREET, LOS ANGELES, CALIFORNIA.

COUNTY OF LOS ANGELES, CALIFORNIA
JOHN A. LAMBIE, COUNTY ENGINEER J. D. PARKHURST, CHIEF ENGINEER
CO. 544, DIST. 32

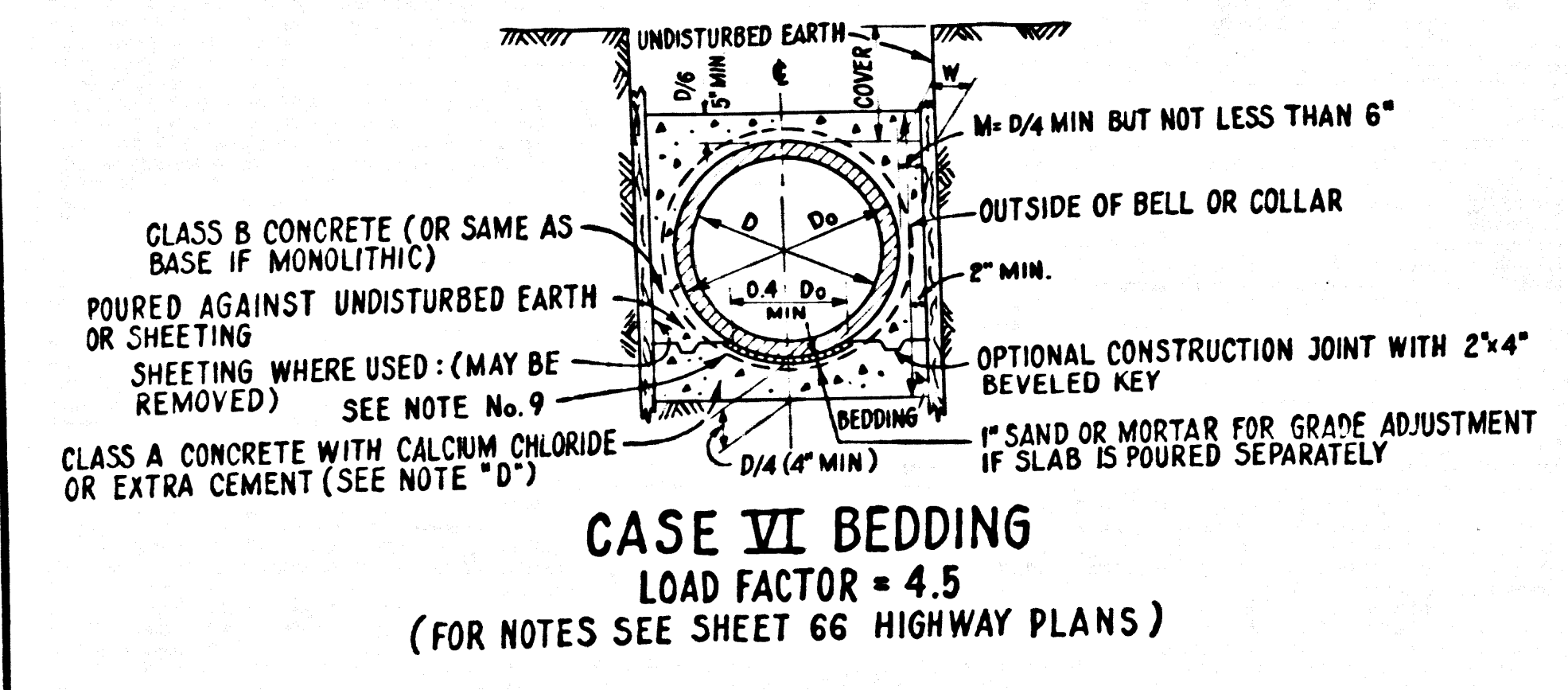
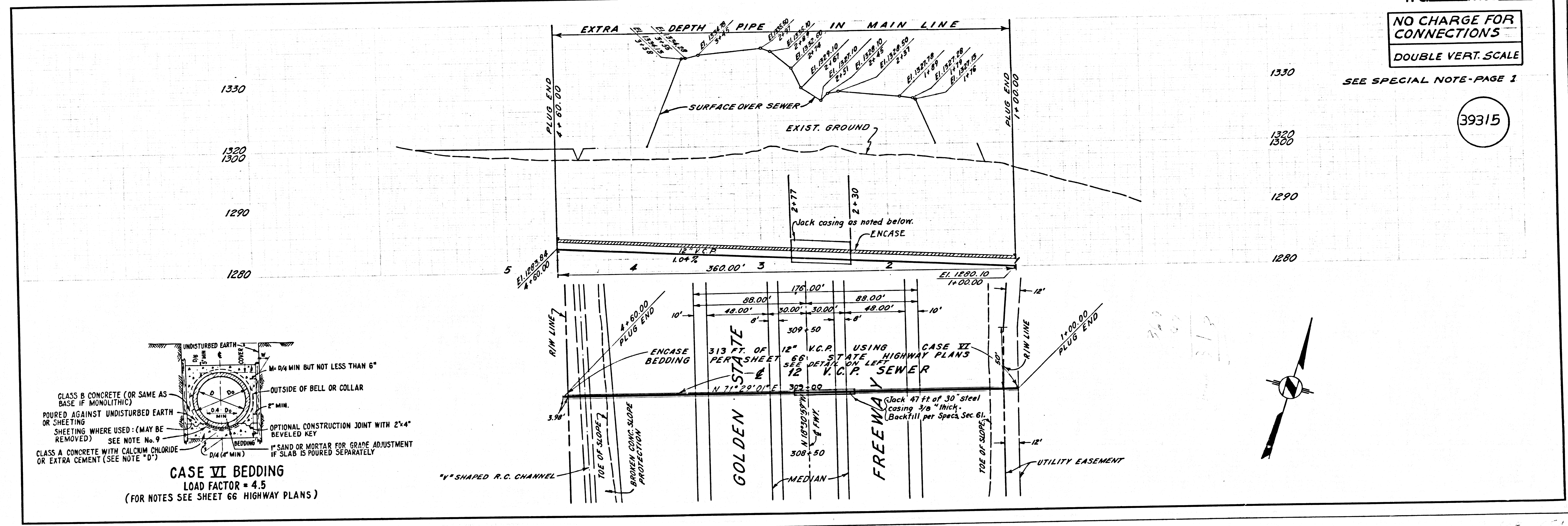
APPROVED BY: *Ralph Schep* ASSISTANT SANITATION ENGINEER APPROVED BY: *J. D. Parkhurst* CHIEF ENGINEER

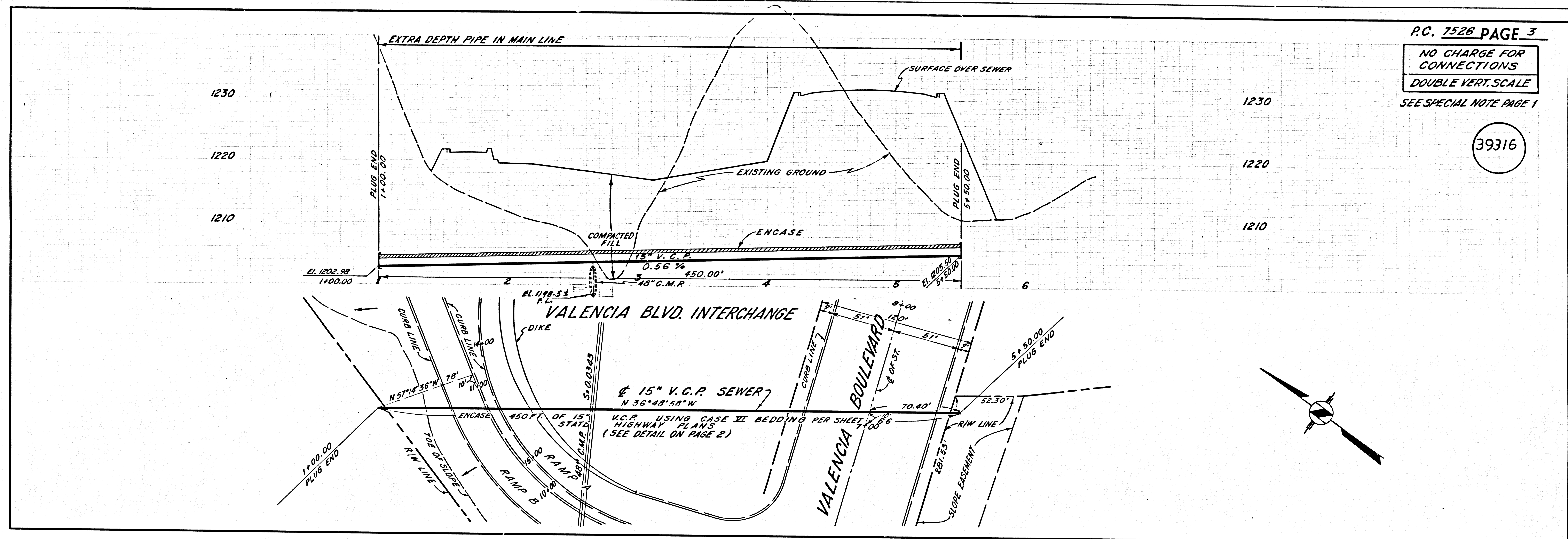
CHECKED BY: *Ralph Schep* 12/17/65
REG. C.E. NO. 13005

J.N. 0366.77

NO CHARGE FOR CONNECTIONS
DOUBLE VERT. SCALE
SEE SPECIAL NOTE - PAGE 1

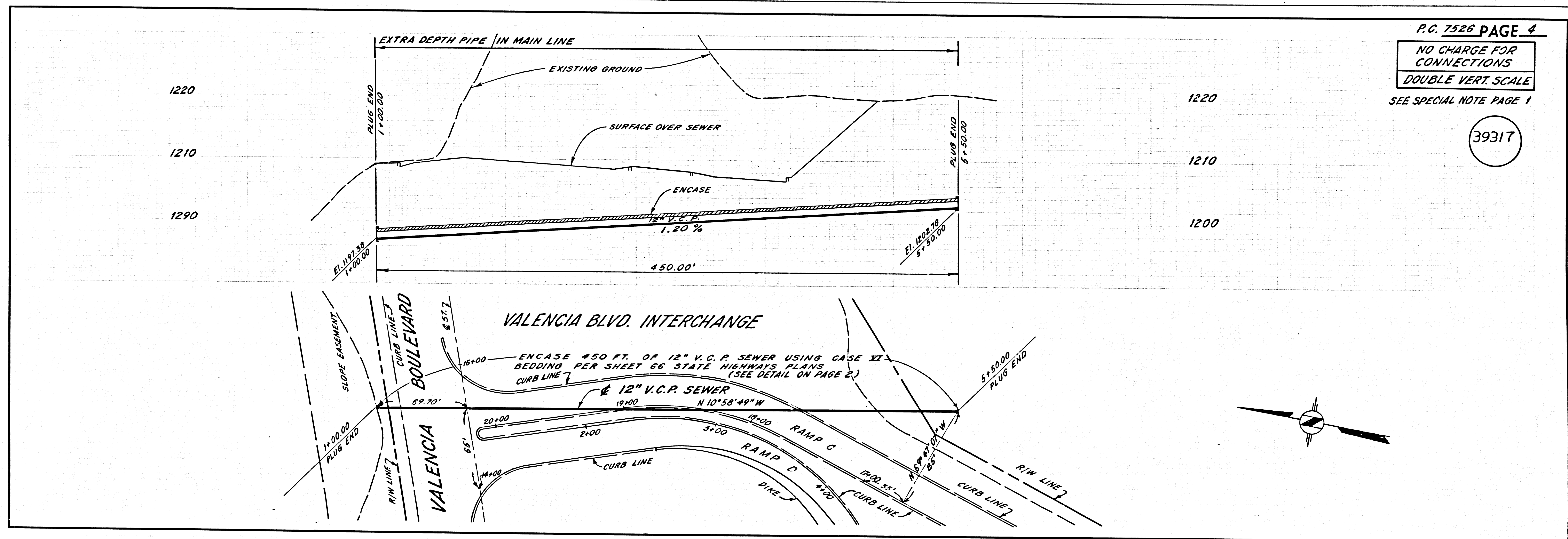
39315





P.C. 7526 PAGE 3
 NO CHARGE FOR CONNECTIONS
 DOUBLE VERT. SCALE
 SEE SPECIAL NOTE PAGE 1

39316



P.C. 7526 PAGE 4
 NO CHARGE FOR CONNECTIONS
 DOUBLE VERT. SCALE
 SEE SPECIAL NOTE PAGE 1

39317