

B.M. SY 4235 ELEV. 358.374
 SET 1.5' ON TOP OF RET. WALL ON
 SOUTH SIDE OF LOADING DOCK OR
 "COMBINATION GARAGE WAREHOUSE" AT
 1016 N. EASTERN AVE. 13' WEST OF
 S.W. CORNER OF ABOUT 1960
 ELEV. 358.374 QUAD. 1960

DOUBLE SCALE
 EAST LOS ANGELES BLDG. DIST. NO. 6

PROFILE ALIGNMENT AND GRADE OF P.C. 7529
 SANITARY SEWERS PAGE 1
 TO BE CONSTRUCTED IN
 R/W EASTERLY OF EASTERN AVE.

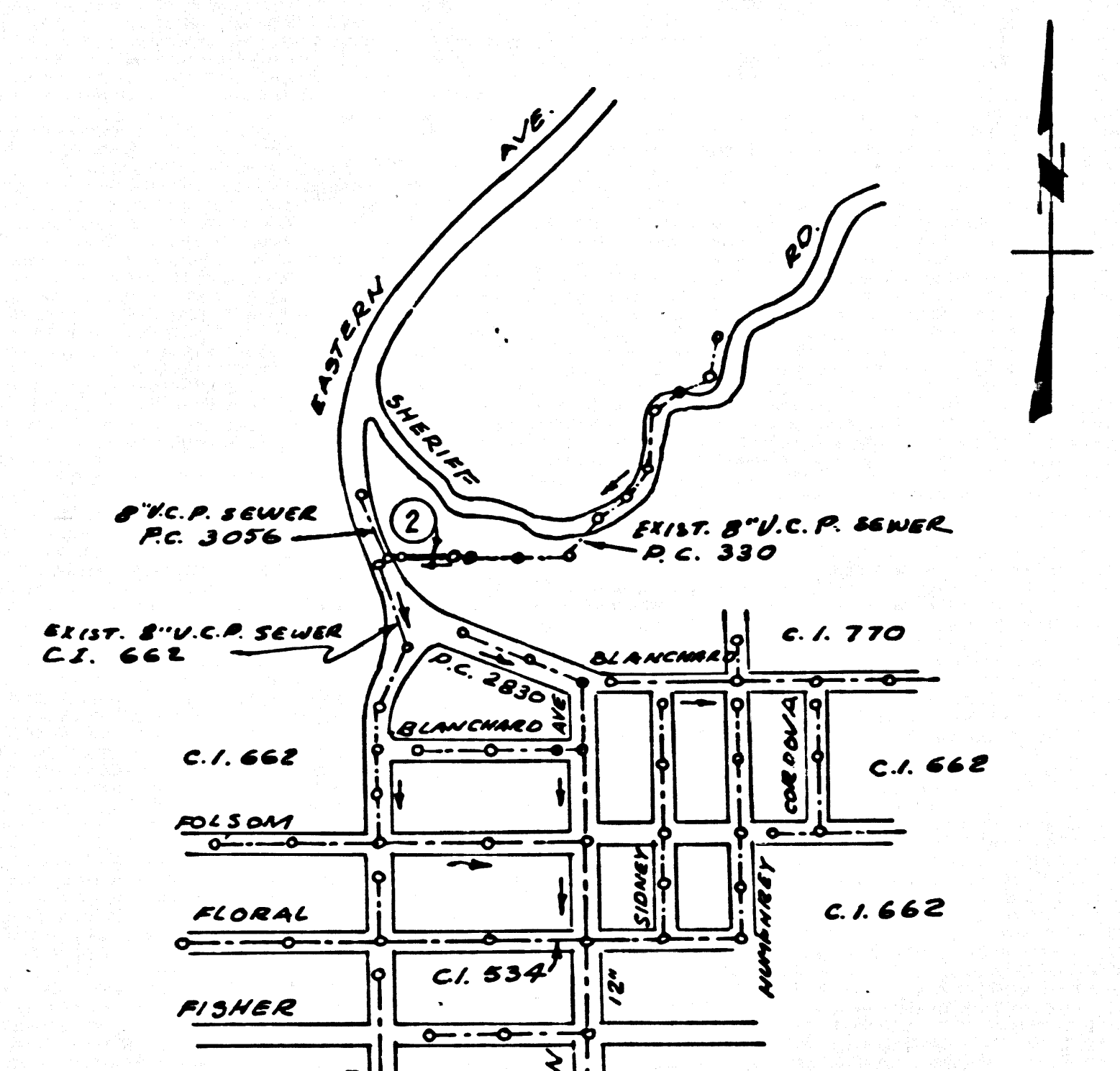
PRIVATE CONTRACT NO. 7529

W.S. 36
 1 SHEETS, 2 PAGES
 SCALE: VERT. 1"=8'
 HORIZ. 1"=40'

PREPARED IN THE OFFICES OF
 L. D. LEEPER & ASSOCIATES
 106 S. GATEWAY AVENUE
 WHITTIER, CALIFORNIA
 REG. C. E. NO. 3775

40294

FOR LEGEND SEE PLAN NO. S-1



INDEX MAP
 P.C. 7529
 SCALE 1"=600'

1. PROVIDE STAKES ON THE PROPERTY LINE OR PROPERTY LINES PRODUCED AT RIGHT ANGLES TO THE SEWER LINE AT THE CENTER LINE OF EACH MANHOLE.
2. NO REPRESENTATIVE OF THE COUNTY ENGINEER WILL SURVEY OR LAY OUT ANY PORTION OF THE WORK.
3. THE PRIVATE ENGINEER SHALL FURNISH THE COUNTY ENGINEER WITH GRADE SHEETS AND STATIONING FOR ALL HOUSE LATERALS AND T-BRANCHES AND SHALL PROVIDE STAKES FOR THEM AT THEIR PROPER LOCATIONS WITH STATIONING PLAINLY MARKED. ALL HOUSE LATERALS SHALL BE CONSTRUCTED IN A STRAIGHT ALIGNMENT AT RIGHT ANGLES FROM THE MAIN LINE SEWER EXCEPT AS SHOWN ON THE PLANS. HOUSE LATERALS FROM CHIMNEYS SHALL NOT HAVE AN ANGLE OF LESS THAN 45° WITH THE MAIN LINE SEWER. ANY CHANGE IN ALIGNMENT SHALL BE REQUESTED IN WRITING BY THE PRIVATE ENGINEER.
4. NO REVISIONS SHALL BE MADE IN THESE PLANS WITHOUT THE APPROVAL OF THE COUNTY ENGINEER.
5. THE CONTRACTOR SHALL NOTIFY THE CONSTRUCTION DIVISION BY TELEPHONE, MADISON 9-4747, EXT. 8155, AT LEAST TWENTY-FOUR HOURS BEFORE STARTING ANY WORK UNDER THIS CONTRACT.
6. MANHOLES SHALL BE BRICK SEWER STRUCTURES PER S-2, PRECAST CONCRETE MANHOLES PER S-2 OR S-6 MAY BE USED AS AN ALTERNATE IN LOCATIONS APPROVED BY THE COUNTY ENGINEER.
7. USE STANDARD MANHOLE FRAMES AND COVERS, S-6, EXCEPT AS NOTED.
8. MANHOLE TOPS IN UNIMPROVED RIGHTS-OF-WAY TO BE SIX INCHES ABOVE FINISHED GRADE.
9. USE EXTRA STRENGTH PIPE, ALL PIPE IS STANDARD DEPTH EXCEPT AS NOTED.
10. USE MECHANICAL COMPRESSION JOINTS FOR ALL V.C.P. JOINTS PER SPECS, SECS. 34 & 48, 49.
11. WHERE EVER GROUND WATER IS ENCOUNTERED DURING THE CONSTRUCTION OF THE SEWERS, THE V.C.P. JOINTS SHALL BE OF MECHANICAL COMPRESSION JOINTS PER SPECS, SECS. 34 & 48, 49.
12. IF A POWER POLE IS WITHIN THREE FEET OF THE SEWER, THE SEWER SHALL BE ENCASED, PER S-23, TWO FEET ON EITHER SIDE FROM THE POINT OF INTERFERENCE.
13. IF DURING THE COURSE OF CONSTRUCTION IT IS DETERMINED THAT THERE IS LESS THAN FOUR FEET OF COVER OVER THE TOP OF A MAIN LINE OR HOUSE LATERAL V.C.P. SEWER WHICH IS NOT INDICATED ON THE PLANS, THE PIPE SHALL BE ENCASED PER S-23 UNLESS OTHERWISE APPROVED BY THE COUNTY ENGINEER.
14. UNBURFACE ALL TRENCHES WITHIN PAVED AREAS TO MEET L.A. COUNTY ROAD DEPT. OR CALIFORNIA STATE HIGHWAY REQUIREMENTS IN ACCORDANCE WITH PERMITS.
15. FOR ALLOWABLE LEAKAGE TEST USE FORMULA NO. 1, SPECS, SEC. 54.
16. ALL STATE AND LOCAL TRAFFIC SAFETY SIGNALS SHALL BE RIGIDLY ENFORCED.

NO CONNECTIONS FOR THE DISPOSAL OF INDUSTRIAL WASTES SHALL BE MADE TO SEWERS SHOWN ON THESE DRAWINGS WITHOUT WRITTEN PERMISSION FROM THE CHIEF ENGINEER AND GENERAL MANAGER OF THE COUNTY SANITATION DISTRICTS

COLLECT CHARGES AS INDICATED

APPROVED BY: *[Signature]*
 SHERIFF'S OFFICE

APPROVED *[Signature]* DATE: 9-21-66
 INDUSTRIAL WASTE DIVISION

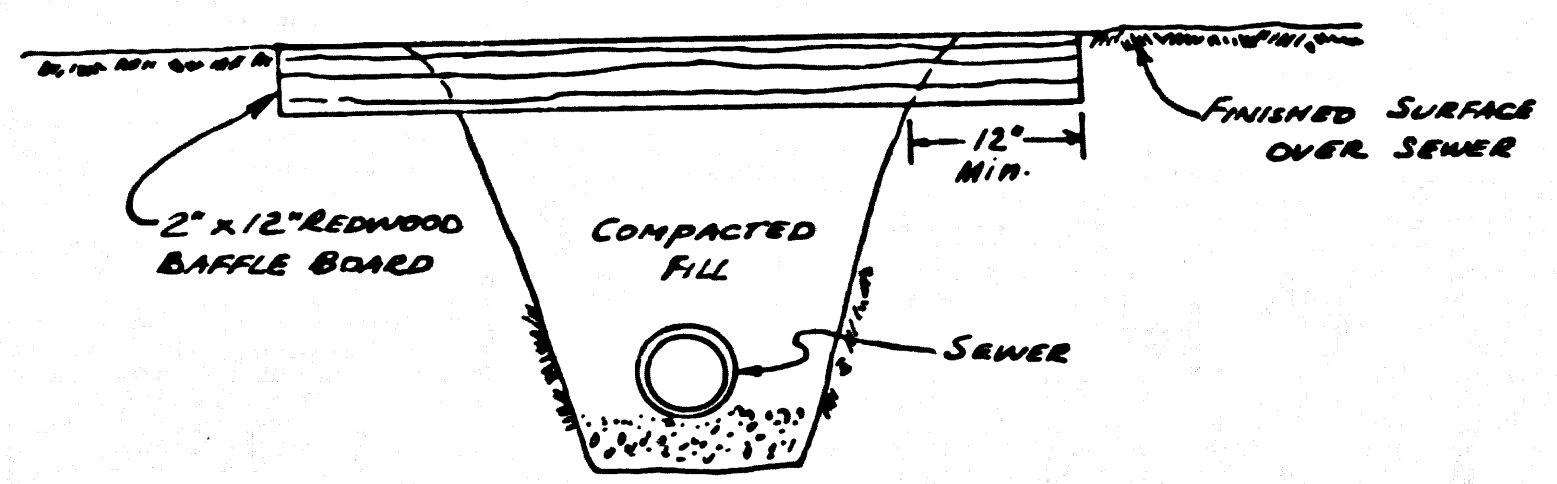
COUNTY OF LOS ANGELES, CALIFORNIA
 JOHN A. LAMBIE, COUNTY ENGINEER
 J. D. PARKHURST, CHIEF ENGINEER

APPROVED BY: *[Signature]*
 SANITATION ENGINEER

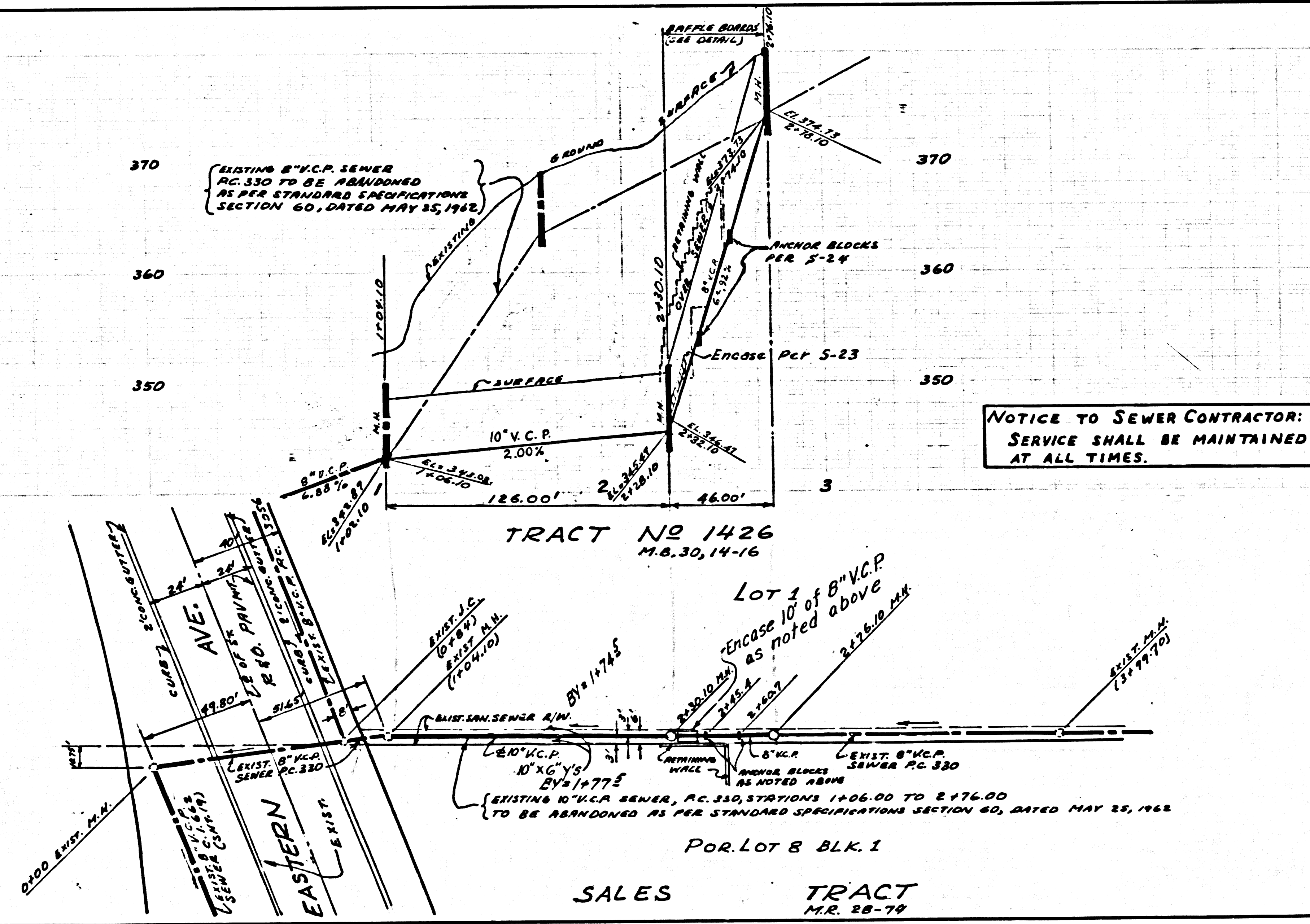
APPROVED BY: *[Signature]*
 OFFICE ENGINEER

J. N. 0366.78

BAFFLE BOARD DETAIL
 NO SCALE



EACH END OF THE BAFFLE IS TO EXTEND ONE FOOT INTO UNDISTURBED GROUND. THE BAFFLE BOARDS SHALL BE SPACED SO THAT THE TOP OF THE LOWER BOARD IS LEVEL WITH THE BOTTOM OF THE NEXT HIGHER BOARD. THE UPPER ONE-FOOT LAYER OF THE BACKFILL IS TO BE TOP SOFT-TAPPED IN PLACE, PLANTED WITH MUSTARD AND RYE GRASS, AND WATERED UNTIL BEDDING IS RESTORED.



NOTICE TO SEWER CONTRACTOR:
 SERVICE SHALL BE MAINTAINED AT ALL TIMES.

P.C. 7529 PAGE 2
 NO CHARGE FOR CONNECTIONS
 DOUBLE SCALE

40295