

B.M. SL 1663 ELEV. 1576.360
 C.S. ON CAD W END CONC. HWY.
 LOC. 30 FT. S + 53 FT. W FROM E
 INT. SOLEDAD CV RD & SAND CV
 RD. MK.D. (BM 202-10 1962)
 NEWHALL QUAD. 1938

FOR THE NEWHALL COUNTY WATER DISTRICT

APPROVED BY *J.R. Tallon* DATE 11-2-1966
 T.V. TALLON P.E. No. 2204
 CHIEF ENGINEER AND GENERAL MANAGER

NEWHALL COUNTY WATER DIST.

NEWHALL BLDG. DIST. NO. 82

PROFILE ALIGNMENT AND GRADE OF
 SANITARY SEWERS PAGE 1
 TO BE CONSTRUCTED IN
 TRACT No 25092

PRIVATE CONTRACT NO. 7532 B

W.S. 62
 SHEETS, 7 PAGES
 SCALE: VERT. 1"=8' HORIZ. 1"=40'
 NOVEMBER, 1966

38985

PREPARED IN THE OFFICES OF
 ENGINEERS 4830 S. GARDEN ST.
 1421 WEST WASHINGTON BLVD., LOS ANGELES 9, CALIF.

J.R. Tallon
 REG. C. E. NO. 13083

FOR LEGEND SEE PLAN NO. S-1

- NOTES:
1. PROVIDE STAKES ON THE PROPERTY LINE OR PROPERTY LINES PRODUCED AT RIGHT ANGLES TO THE SEWER LINE AT THE CENTER LINE OF EACH MANHOLE.
 2. NO REPRESENTATIVE OF THE COUNTY ENGINEER WILL SURVEY OR LAY OUT ANY PORTION OF THE WORK.
 3. THE PRIVATE ENGINEER SHALL FURNISH THE COUNTY ENGINEER WITH GRADE SHEETS AND STATIONING FOR ALL HOUSE LATERALS AND Y BRANCHES AND SHALL PROVIDE STAKES FOR THEM AT THEIR PROPER LOCATIONS WITH STATIONING PLAINLY MARKED. ALL HOUSE LATERALS SHALL BE CONSTRUCTED IN A STRAIGHT ALIGNMENT AT RIGHT ANGLES FROM THE MAIN LINE SEWER EXCEPT AS SHOWN ON THE PLANS. HOUSE LATERALS FROM CHIMNEYS SHALL NOT HAVE AN ANGLE OF LESS THAN 45° WITH THE MAIN LINE SEWER. ANY CHANGE IN ALIGNMENT SHALL BE REQUESTED IN WRITING BY THE PRIVATE ENGINEER.
 4. THE PRIVATE ENGINEER SHALL FURNISH THE HOUSE LATERAL DEPTH AT THE PROPERTY LINE BELOW THE TOP OF CURB ELEVATION FOR EACH HOUSE LATERAL ON THE GRADE SHEET.
 5. NO REVISIONS SHALL BE MADE IN THESE PLANS WITHOUT THE APPROVAL OF THE COUNTY ENGINEER.
 6. THE CONTRACTOR SHALL NOTIFY THE CONSTRUCTION DIVISION BY TELEPHONE, MADISON 9-4747, EXT. 8153, AT LEAST TWENTY-FOUR HOURS BEFORE STARTING ANY WORK UNDER THIS CONTRACT.
 7. MANHOLES SHALL BE BRICK SEWER STRUCTURES PER S-2. PRECAST CONCRETE MANHOLES PER S-3 OR S-4 MAY BE USED AS AN ALTERNATE IN LOCATIONS APPROVED BY THE COUNTY ENGINEER.
 8. USE STANDARD MANHOLE FRAMES AND COVERS, S-15, EXCEPT AS NOTED.
 9. MANHOLE TOPS IN UNIMPROVED AREAS OF WAY TO BE SIX INCHES ABOVE FINISHED GRADE.
 10. USE EXTRA STRENGTH PIPE, ALL PIPE IS STANDARD DEPTH EXCEPT AS NOTED.
 11. USE MECHANICAL COMPRESSION JOINTS PER ALL V.C.P. JOINTS PER SPEC., SECS. 56 & 48, & 49.
 12. IF A POWER POLE IS WITHIN THREE FEET OF THE SEWER, THE SEWER SHALL BE ENCASED, PER S-23, TWO FEET ON EACH SIDE FROM THE POINT OF INTERFERENCE.
 13. IF DURING THE COURSE OF CONSTRUCTION IT IS DETERMINED THAT THERE IS LESS THAN FOUR FEET OF COVER OVER THE TOP OF A MAIN LINE OR HOUSE LATERAL V.C.P. SEWER WHICH IS NOT INDICATED ON THE PLANS, THE PIPE SHALL BE ENCASED PER S-23 UNLESS OTHERWISE APPROVED BY THE COUNTY ENGINEER.
 14. HOUSE LATERALS TO BE CONSTRUCTED WITH INVERTS AT PROPERTY LINE... 6... FEET BELOW CURB GRADE EXCEPT AS NOTED.
 15. MINIMIZE ALL REMOVES WITHIN PAVED AREAS TO MEET L.A. COUNTY ROAD DEPT. OR CALIFORNIA STATE HIGHWAY REQUIREMENTS IN ACCORDANCE WITH PERMITS.
 16. FOR ALLOWABLE LEAKAGE TEST USE FORMULA NO. 2, COUNTY SPEC., SEC. 54.
 17. CONSTRUCTION IN FILLED AREAS:
 - (a) AN ACCEPTABLE CERTIFICATION OF CONSTRUCTION TESTS REPORTS SHALL BE SUBMITTED TO THE CONSTRUCTION DIVISION COMPLETION TESTS ARE TO BE MADE IN ACCORDANCE WITH A.S.T.M. STANDARD METHOD OF TEST D693-A.
 - (b) NO CONSTRUCTION IS PERMITTED IN FILLED AREAS WHERE THE RELATIVE DENSITY OF CONSTRUCTION IS LESS THAN 80%.
 - (c) IF THE RELATIVE DENSITY OF CONSTRUCTION IS LESS THAN 80%, ALL MAINLINE AND HOUSE LATERALS SHALL BE C.R. ADDED PER S-23 OR NEW SPECIAL BASE COURSE PER S-31. CASE OF SPECIAL MANHOLE BASE PER S-14 IS REQUIRED.
 - (d) IF THE RELATIVE DENSITY OF CONSTRUCTION IS 80% OR GREATER, THE SPECIAL BASE PER S-31 IS NOT REQUIRED.
 18. ALL STATE & LOCAL TRENCH SAFETY ORDERS WILL BE RIGIDLY ENFORCED.
 19. ALL JOINTS BETWEEN CAST IRON PIPE AND VITRIFIED CLAY PIPE SHALL BE MADE WITH A RUBBER GLEBE JOINT (WITH HOOD IF NECESSARY) PER STANDARD SPECIFICATIONS, SECTION 36, OR APPROVED EQUAL.

NOTE:
 GRADES TO WHICH THIS IMPROVEMENT IS TO BE CONSTRUCTED ARE SHOWN ON PLANS AND PROFILES. GRADE POINTS FOR TOP OF CURB, CENTER LINE OF STREETS, OR CENTER LINE OF ALLEYS ARE SHOWN BY CIRCLES ON PROFILES. AT ALL POINTS BETWEEN DESIGNATED POINTS THE GRADE SHALL BE ESTABLISHED SO AS TO CONFORM TO A STRAIGHT LINE DRAWN BETWEEN SAID DESIGNATED POINTS. THIS DRAWING AND THE DATA HEREON ARE HEREBY MADE A PART OF THE SPECIFICATIONS. NO STANDARD SPECIFICATIONS DATED 3-25-65 IS PRINTED ON FILE IN THE OFFICE OF THE COUNTY ENGINEER AND SHALL BE FURNISHED ONLY IN THE PRESENCE OF THE COUNTY ENGINEER. THE CONTRACTOR MUST OBTAIN A PERMIT TO EXCAVATE IN COUNTY STREETS FROM THE L.A. COUNTY ROAD DEPT., DISTRICT OFFICE NO. 1421 WEST WASHINGTON BLVD., LOS ANGELES 9, CALIF. AND PAY A FEE TO THE COUNTY ENGINEER, ROOM 308, COUNTY ENGINEERING BUILDING, 126 SOUTH SPRING STREET, LOS ANGELES, CALIFORNI... REGIONAL OFFICE, SUFFICIENT TO COVER THE COST OF CONSTRUCTION INSPECTION AND RECORD PLANS. THE CONTRACTOR DOES NOT CONSTITUTE A REPRESENTATION AS TO THE ACCURACY OF THE LOCATION OR OF THE EXISTENCE OR NON-EXISTENCE OF ANY UNDERGROUND UTILITY PIPE, OR STRUCTURE WITHIN THE LIMITS OF THE PROJECT. THIS NOTE APPLIES TO ALL PAGES. A PERMIT MUST BE OBTAINED FROM THE STATE OF CALIFORNIA, DIVISION OF HIGHWAY, 126 SOUTH SPRING STREET, LOS ANGELES, CALIFORNIA.

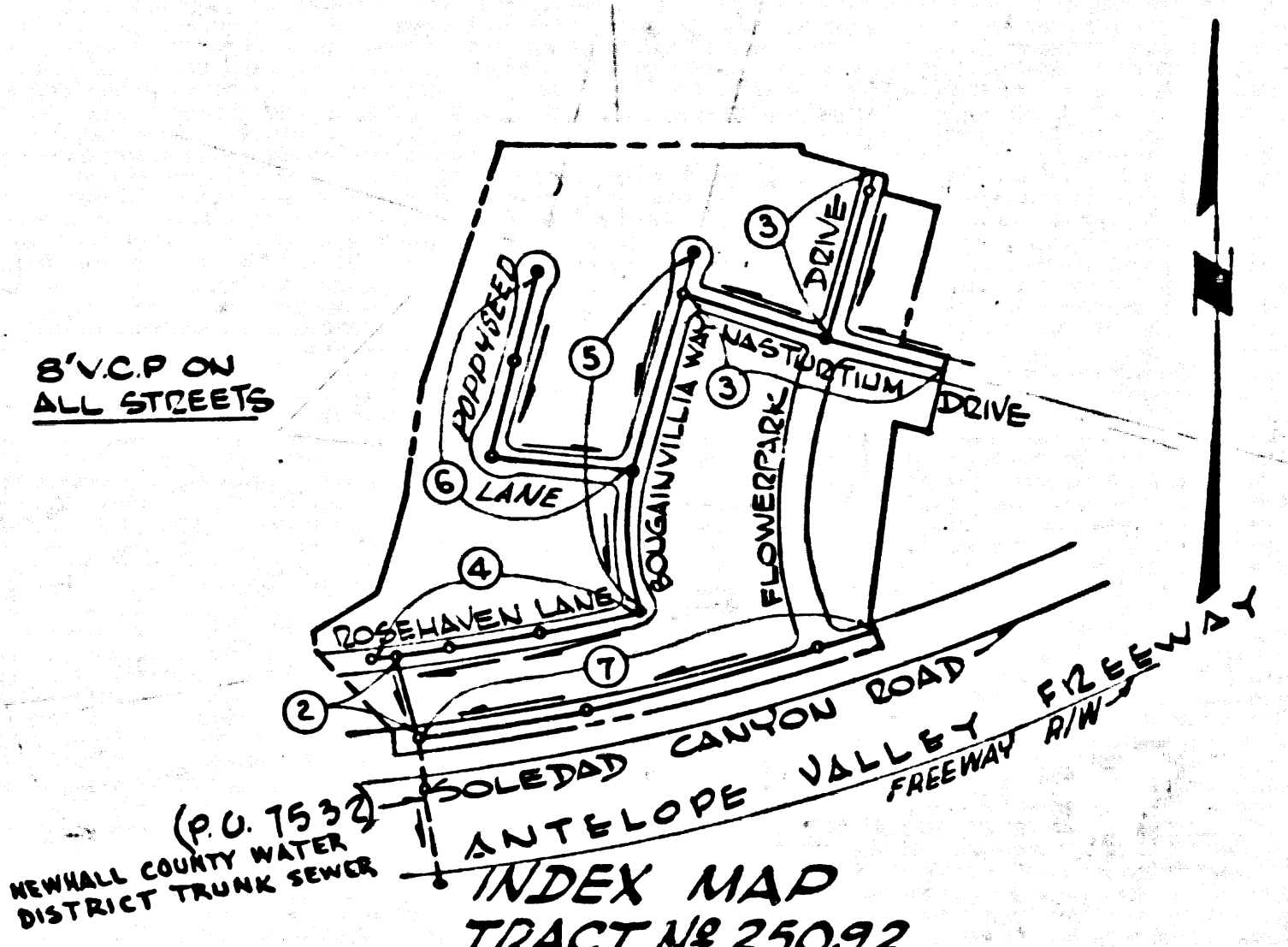
COUNTY OF LOS ANGELES, CALIFORNIA
 JOHN A. LAMBIE, COUNTY ENGINEER J. D. PARKHURST, CHIEF ENGINEER
 CO. SAN. DIST. NO. 26

APPROVED BY *J.R. Tallon* 11-2-66
 SANITATION ENGINEER REG. C. E. NO. 13083

CHECKED BY *J.R. Tallon* 11-2-66
 REG. C. E. NO. 13083

NO CONNECTIONS FOR THE DISPOSAL OF INDUSTRIAL WASTE SHALL BE MADE TO SEWERS SHOWN ON THESE DRAWINGS WITHOUT WRITTEN PERMISSION FROM THE CHIEF ENGINEER AND GENERAL MANAGER OF THE COUNTY SANITATION DISTRICTS.

J. N. 036679

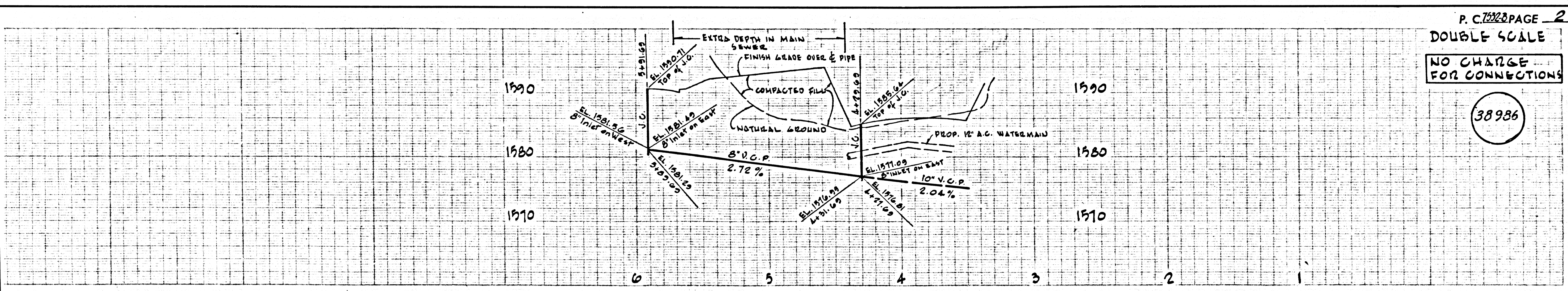


PRIVATE ENGINEER'S
 NOTICE TO CONTRACTOR

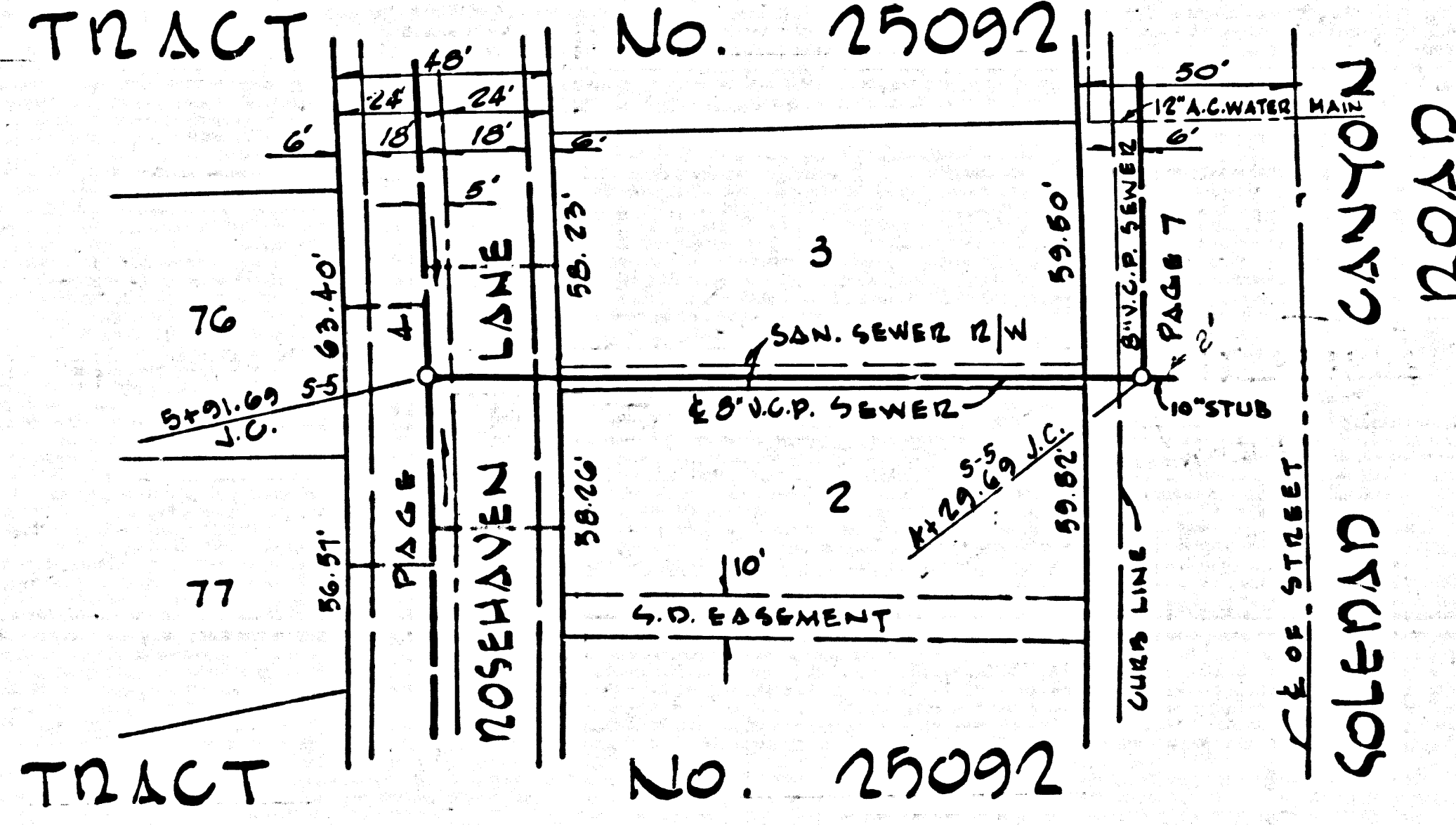
THE EXISTENCE AND LOCATION OF ANY UNDERGROUND UTILITY PIPES OR STRUCTURES SHOWN ON THESE PLANS ARE OBTAINED BY A SEARCH OF THE AVAILABLE RECORDS. TO THE BEST OF OUR KNOWLEDGE THERE ARE NO EXISTING UTILITIES EXCEPT AS SHOWN ON THIS MAP. THE CONTRACTOR IS REQUESTED TO TAKE PRECAUTIONARY MEASURES TO PROTECT THE UTILITY LINES SHOWN AND ANY OTHER LINES NOT OF RECORD OR NOT SHOWN ON THIS DRAWING.

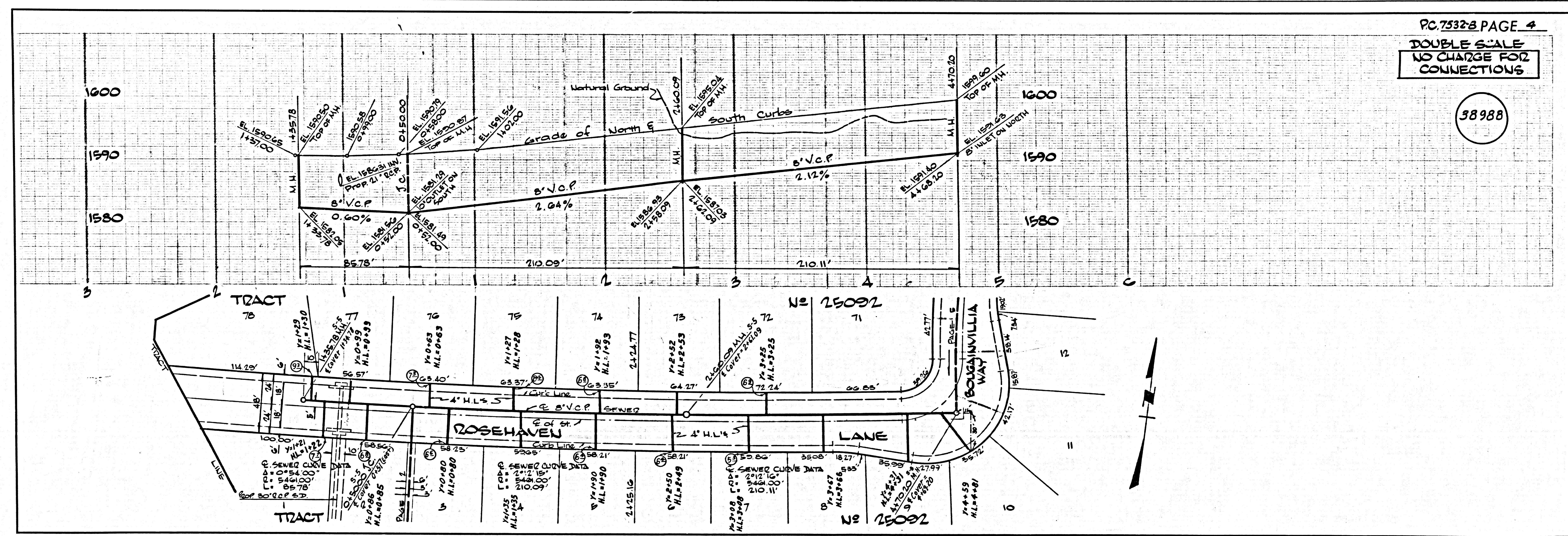
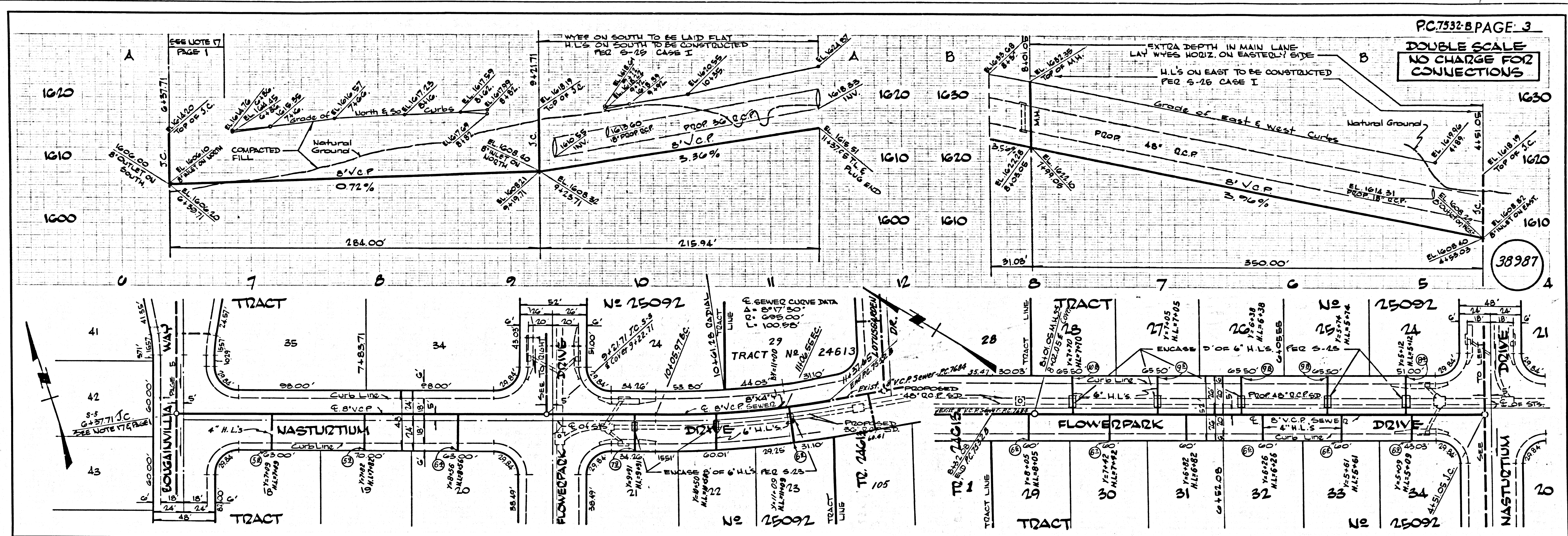
ISSUE NO HOUSE CONNECTION PERMITS UNTIL OUTLET SEWER IS AVAILABLE

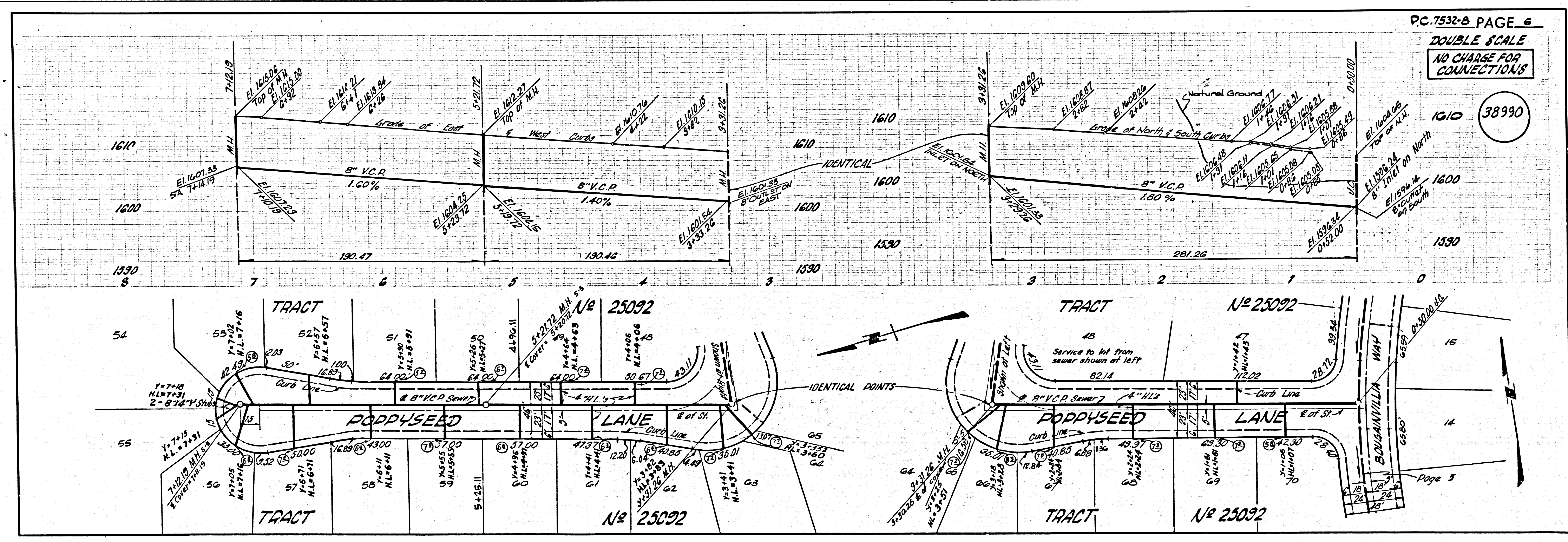
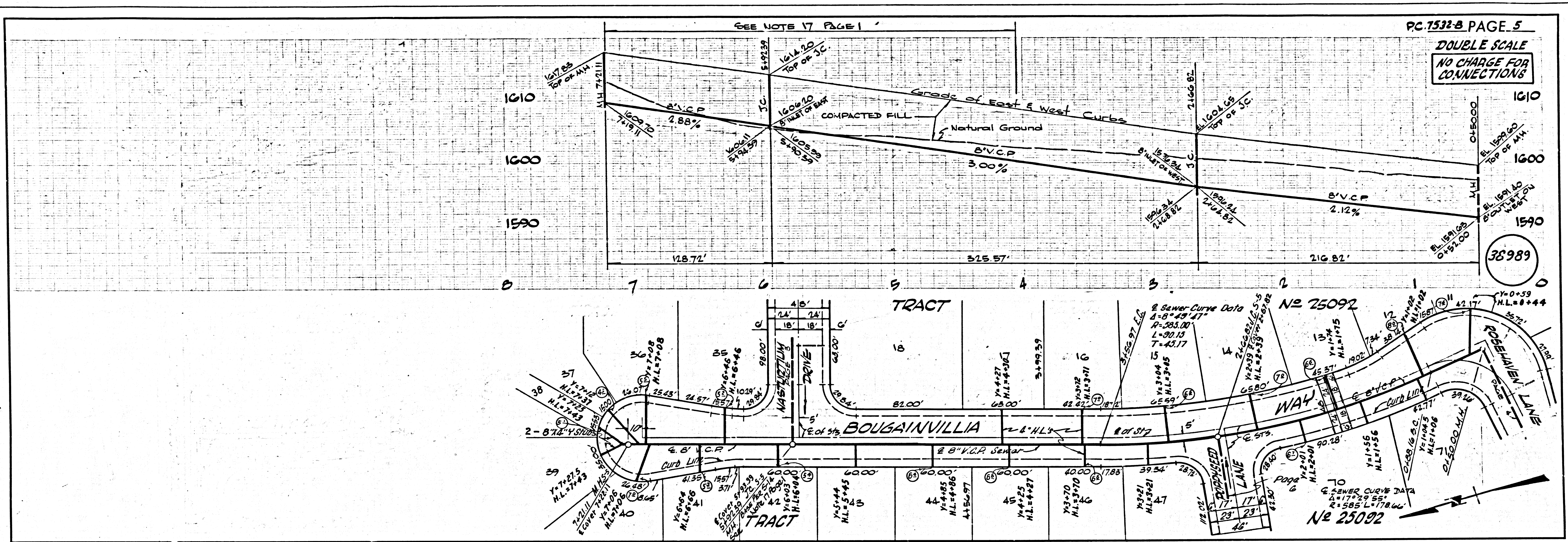
COLLECT CHARGES AS INDICATED
J.R. Tallon 11-2-66

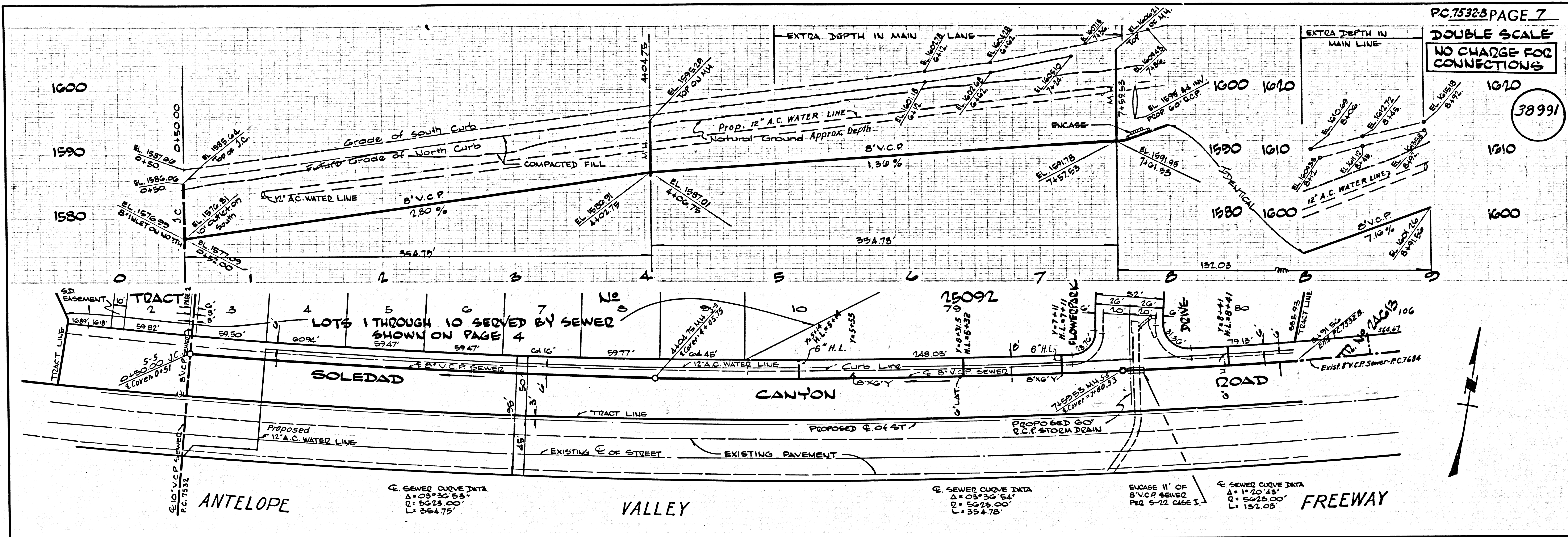


P. C. 7532 PAGE 2
 DOUBLE SCALE
 NO CHARGE FOR CONNECTIONS
 38986



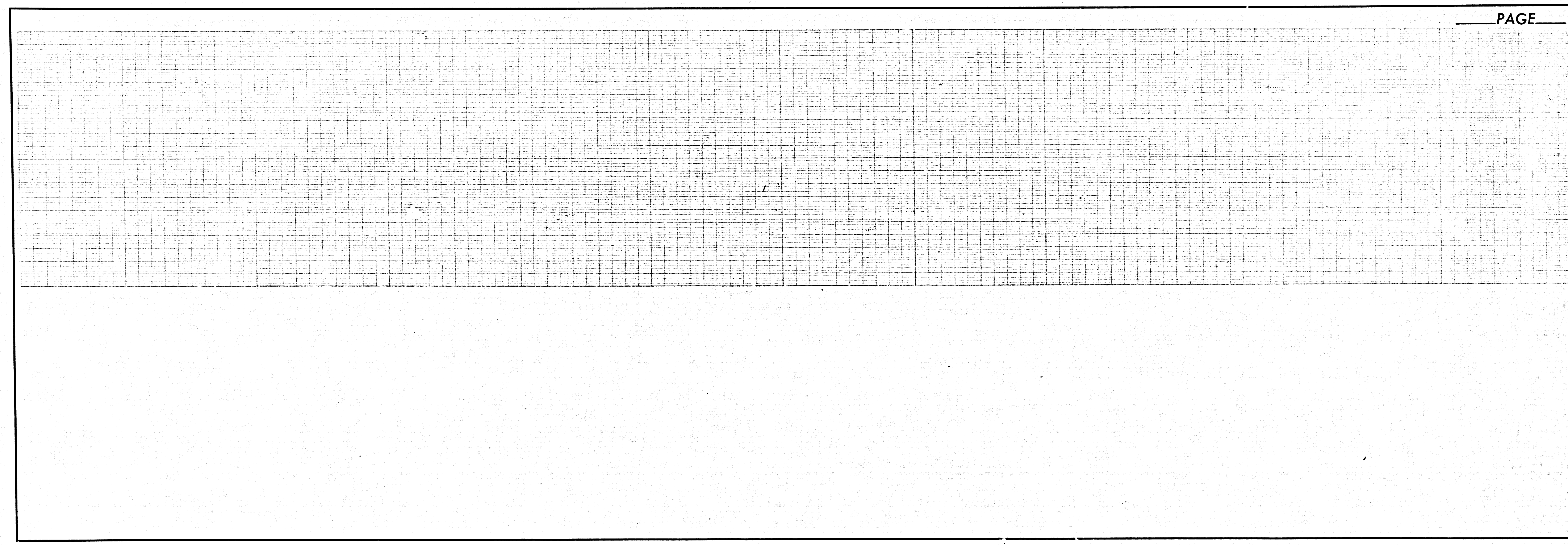




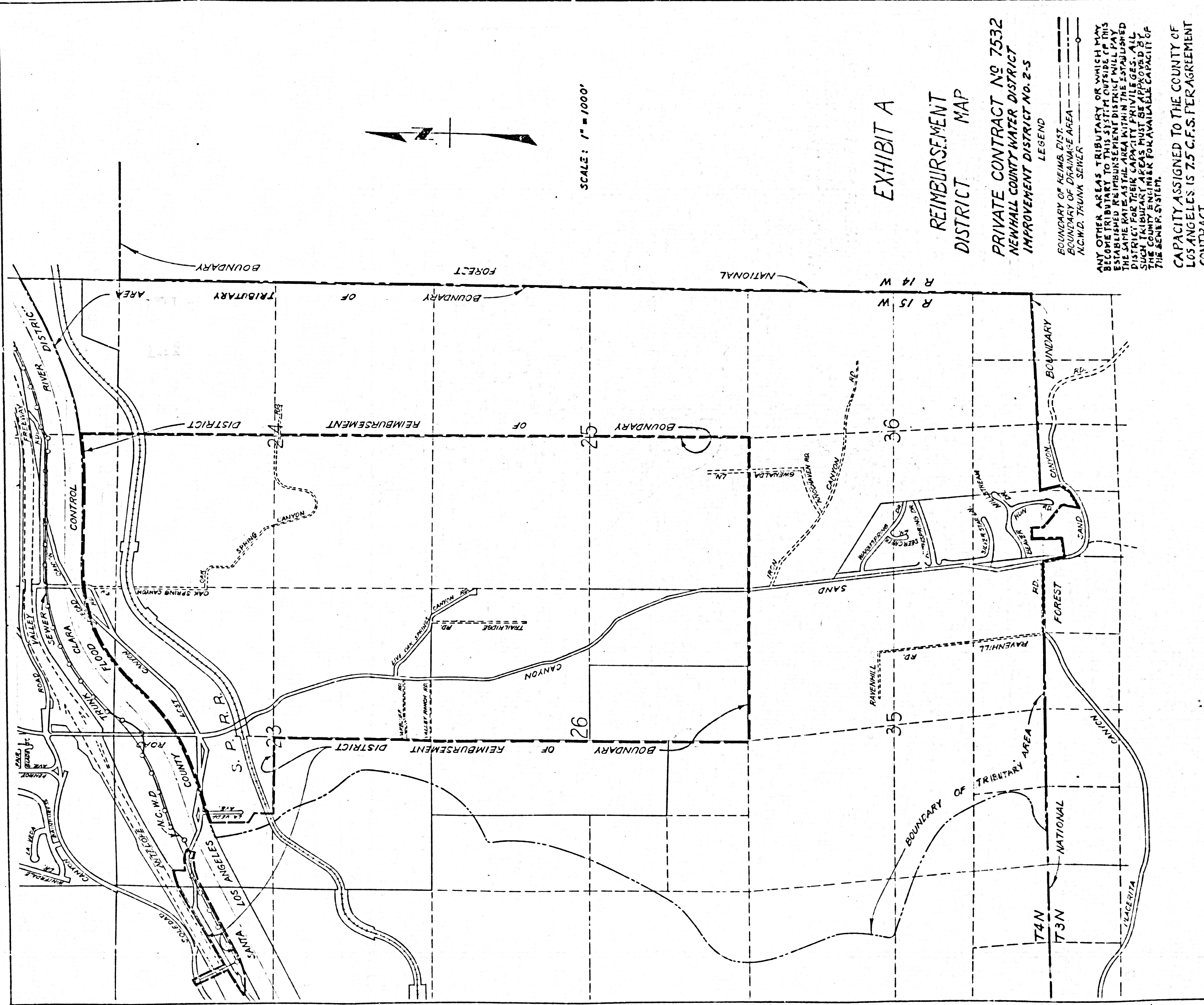


PC 75328 PAGE 7
 DOUBLE SCALE
 NO CHARGE FOR CONNECTIONS

38991



PAGE _____



SCALE: 1" = 1000'

EXHIBIT A
REIMBURSEMENT
DISTRICT MAP

PRIVATE CONTRACT No 7532
NEW HALL COUNTY WATER DISTRICT
IMPROVEMENT DISTRICT No. 2-5

LEGEND
 BOUNDARY OF REIMB. DIST. ---
 BOUNDARY OF DRAINAGE AREA - - -
 N.C.W.D. TRUNK SEWER - - -

ANY OTHER AREAS TRIBUTARY OR WHICH MAY BE TRIBUTARY TO THIS SYSTEM OUTSIDE OF THIS DISTRICT WILL BE REIMBURSED BY THIS DISTRICT AT THE SAME RATE AS THE AREA WITHIN THE ESTABLISHED DISTRICT FOR THEIR CAPACITY PRIVILEGES. ALL SUCH TRIBUTARY AREAS MUST BE APPROVED BY THE COUNTY ENGINEER FOR AVAILABLE CAPACITY OF THE SEWER SYSTEM.

CAPACITY ASSIGNED TO THE COUNTY OF LOS ANGELES IS 75 C.F.S. PER AGREEMENT CONTRACT.

PREPARED BY
 DEPARTMENT OF COUNTY ENGINEER
 LOS ANGELES COUNTY
 JOHN A. LAMBIE COUNTY ENGINEER
 SUBMITTED BY: APPROVED BY:
 M.C. Duda, 10047, - 7-10-67
 DESIGN ENGINEER ASST. DIVISION ENGINEER

22

PRIVATE CONTRACT NO. 7532

MAP SHOWING PROPERTY FROM WHICH COLLECTIONS CAN BE MADE BY THE COUNTY OF LOS ANGELES FOR CONNECTIONS TO SEWERAGE FACILITIES CONSTRUCTED BY

**NEWMALL COUNTY WATER DISTRICT
IMPROVEMENT DISTRICT NO. 2-S**

COUNTY OF LOS ANGELES, CALIFORNIA
JOHN A. LAMBIE
COUNTY ENGINEER
JULY, 1967

SCALE: 1" = 400'
MALL SHEET NO. 62
FIVE SHEETS

LEGEND

--- BOUNDARY OF DISTRICT BENEFITED BY THE CONSTRUCTION OF SEWERAGE FACILITIES.
--- PROPERTY FROM WHICH COLLECTIONS CAN BE MADE AT THE RATE SHOWN BEFORE PERMITS WILL BE ISSUED FOR CONNECTIONS.

RATE PER ASSESSABLE ACRE

---	ACREAGE	\$	AC.
---	---	---	---

1000
ACTUAL

ASSESSABLE ACREAGE SHOWN THUSLY PLANNING COMMISSION CONSULTED AS TO PROBABLE FUTURE DEVELOPMENT.

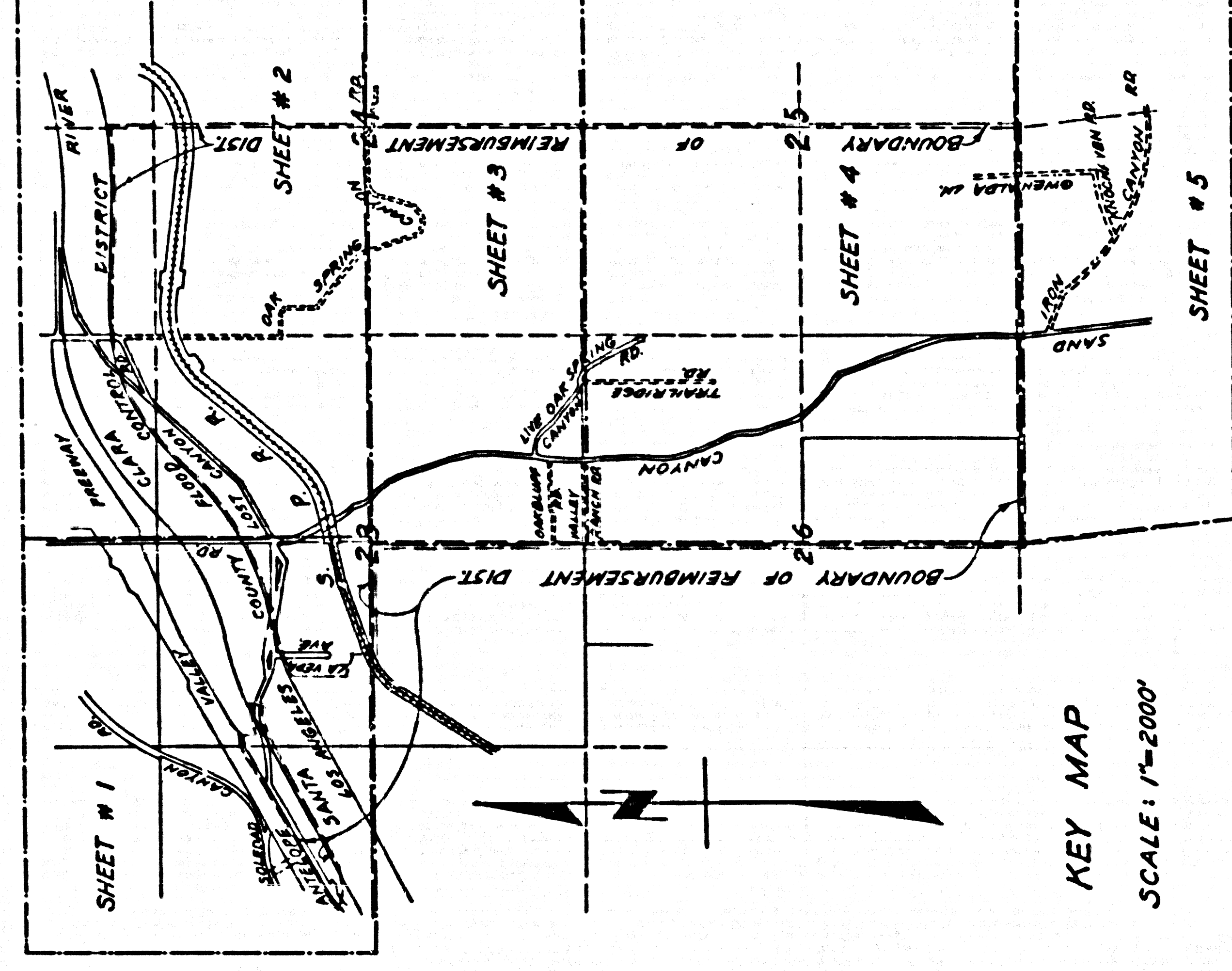
SUBMITTED BY:

M. Duda 8-15-67
DESIGN ENGINEER

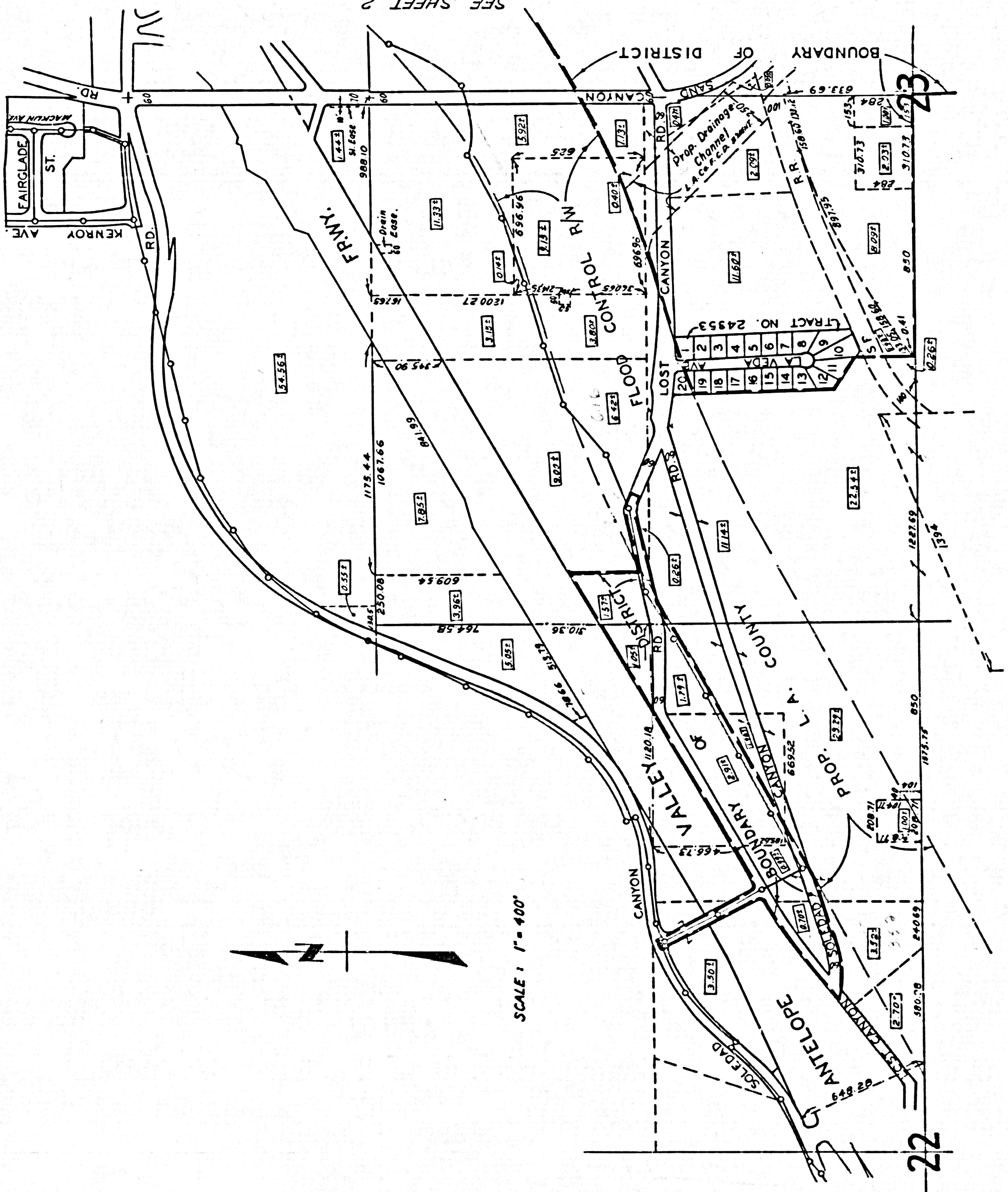
APPROVED BY:

P. Conner 8-15-67
ASST. SANITATION ENGINEER

ANY OTHER AREAS TRIBUTARY OR WHICH MAY BECOME TRIBUTARY TO THIS SYSTEM OUTSIDE OF THIS ESTABLISHED REIMBURSEMENT DISTRICT WILL PAY THE SAME RATE AS THE AREA WITHIN THE ESTABLISHED DISTRICT FOR THEIR CAPACITY PRIVILEGES. ALL SUCH TRIBUTARY AREAS MUST BE APPROVED BY THE COUNTY ENGINEER FOR AVAILABLE CAPACITY OF THE SEWER SYSTEM.



KEY MAP
SCALE: 1" = 2000'

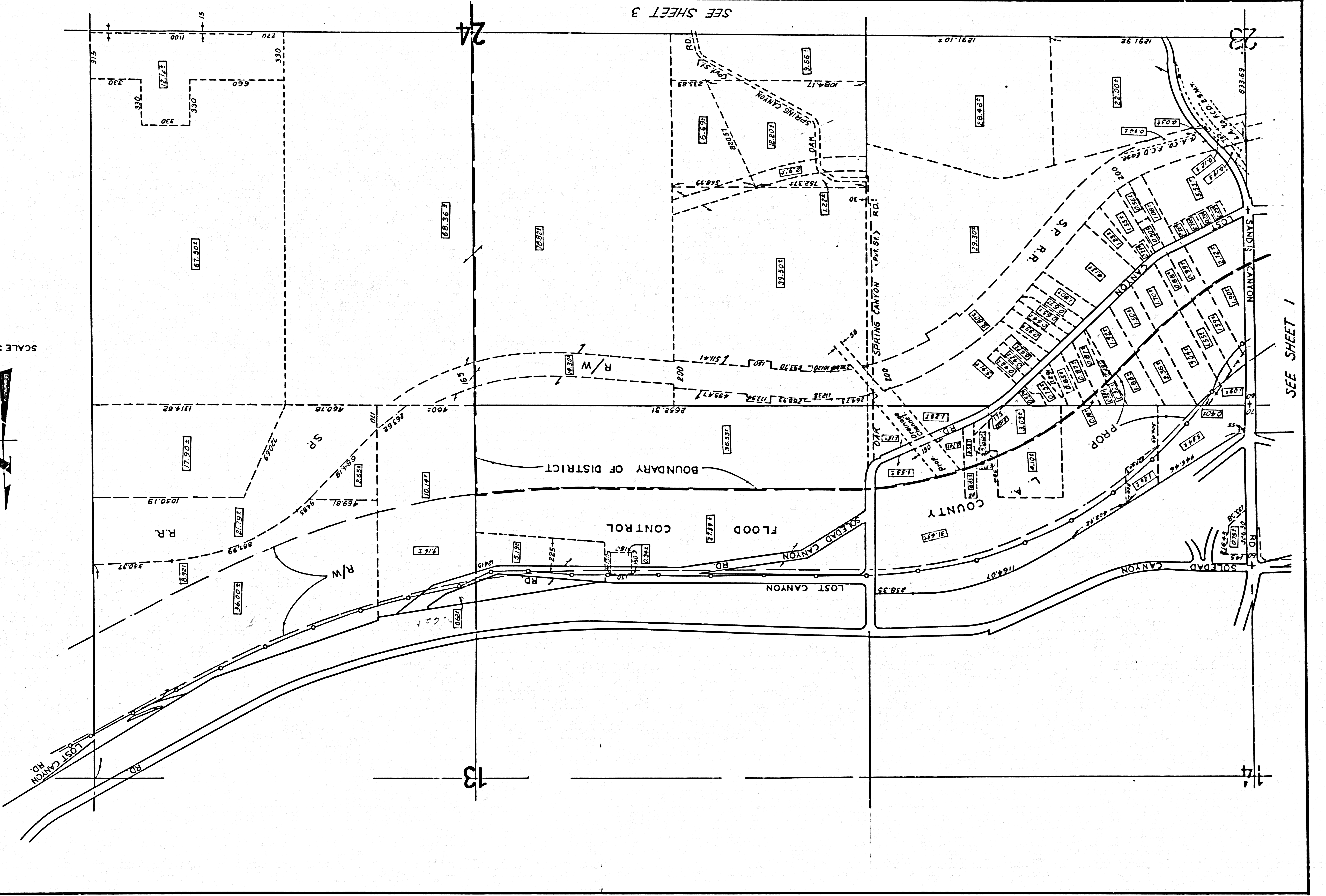
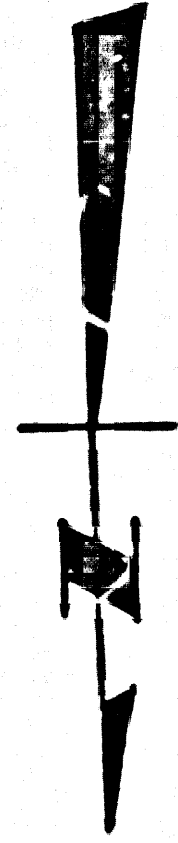


SCALE: 1" = 400'

SEE SHEET 2

22

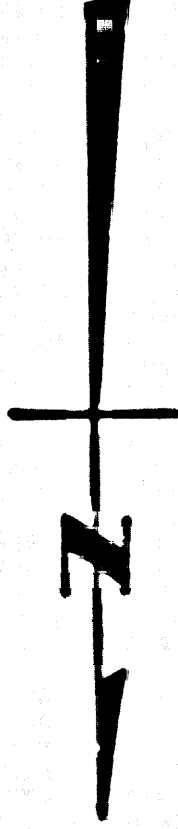
SCALE: 1"=400'



SEE SHEET 3

SEE SHEET 1

T.4 N., R.14 W.
T.4 N., R.15 W.



SCALE: 1" = 400'

TRACT NO. 30087
64.73 ± AC.

LOT #	AC.	LOT #	AC.	LOT #	AC.
1	0.70±	26	0.64±	51	0.95±
2	1.03±	27	0.66±	52	0.92±
3	1.19±	28	0.70±	53	1.20±
4	0.96±	29	0.66±	54	0.94±
5	1.68±	30	0.68±	55	0.92±
6	1.25±	31	0.69±	56	0.92±
7	0.73±	32	0.72±	57	0.93±
8	1.00±	33	0.67±	58	0.63±
9	0.94±	34	0.96±	59	0.65±
10	0.70±	35	0.60±	60	0.92±
11	0.64±	36	0.94±	61	1.14±
12	0.92±	37	0.76±	62	0.93±
13	0.92±	38	0.92±	63	1.02±
14	0.92±	39	0.62±	64	1.63±
15	0.93±	40	0.60±	65	1.02±
16	0.93±	41	0.59±	66	1.21±
17	1.07±	42	0.92±	67	0.99±
18	0.99±	43	0.92±	68	0.96±
19	1.22±	44	0.56±	69	0.95±
20	0.69±	45	0.92±	70	0.78±
21	0.75±	46	0.64±	71	1.09±
22	1.09±	47	0.66±	72	0.95±
23	1.09±	48	0.61±	73	0.93±
24	0.66±	49	1.00±		
25	0.71±	50	1.12±		

TRACT NO. 30168
13.38 ± AC.

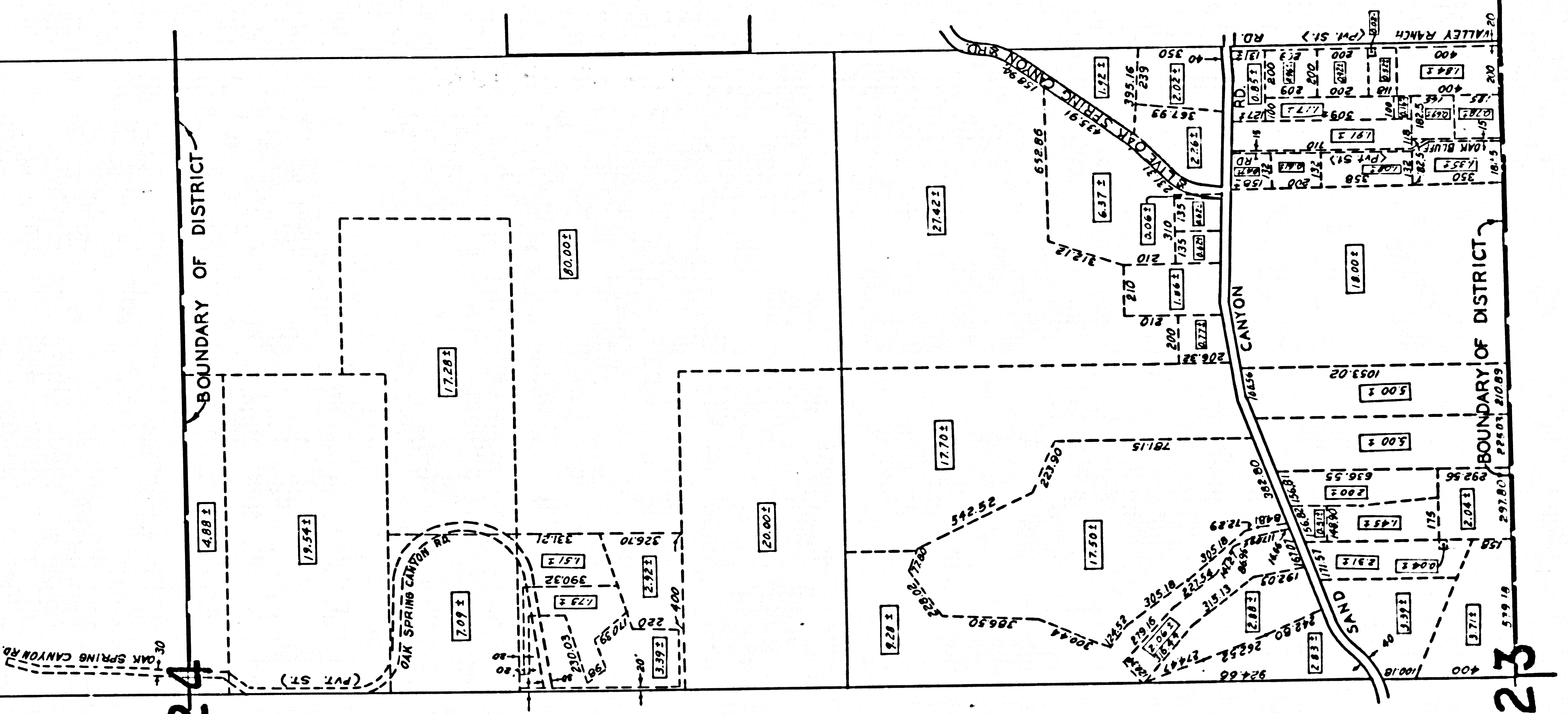
1	0.75±	7	0.94±	13	0.92±
2	0.62±	8	0.94±	14	0.92±
3	0.62±	9	0.92±	15	0.96±
4	0.66±	10	0.92±	16	0.99±
5	0.65±	11	0.62±		
6	0.96±	12	0.97±		

TRACT NO. 28531
80.12 ± AC.

1	0.60±	32	0.61±	63	0.92±
2	0.59±	33	0.61±	64	0.72±
3	0.57±	34	0.64±	65	0.92±
4	0.63±	35	0.66±	66	0.94±
5	0.92±	36	0.92±	67	0.92±
6	0.91±	37	2.11±	68	0.92±
7	0.94±	38	1.25±	69	0.93±
8	0.62±	39	1.06±	70	0.64±
9	0.64±	40	1.15±	71	0.95±
10	0.67±	41	1.14±	72	0.95±
11	0.71±	42	0.93±	73	0.60±
12	0.99±	43	0.93±	74	1.00±
13	0.61±	44	0.55±	75	0.93±
14	0.60±	45	0.61±	76	0.76±
15	0.60±	46	0.63±	77	0.96±
16	0.61±	47	0.98±	78	1.20±
17	0.60±	48	0.98±	79	1.65±
18	0.93±	49	0.59±	80	1.72±
19	0.54±	50	0.60±	81	0.90±
20	0.66±	51	0.59±	82	0.98±
21	0.64±	52	0.93±	83	0.93±
22	0.94±	53	0.62±	84	0.72±
23	0.92±	54	1.01±	85	0.75±
24	0.92±	55	1.28±	86	0.65±
25	0.92±	56	1.33±	87	0.92±
26	0.59±	57	1.35±	88	0.93±
27	0.60±	58	0.64±	89	0.93±
28	0.60±	59	0.94±	90	0.94±
29	0.61±	60	0.94±	91	0.92±
30	0.59±	61	0.94±	92	0.93±
31	0.61±	62	0.94±	93	0.92±

TRACT NO. 24853
4.89 ± AC.

1	0.19±	6	0.25±	15	0.23±
2	0.23±	9	0.40±	16	0.23±
3	0.23±	10	0.35±	17	0.23±
4	0.23±	11	0.30±	18	0.23±
5	0.23±	12	0.29±	19	0.23±
6	0.23±	13	0.26±	20	0.10±
7	0.23±	14	0.21±		

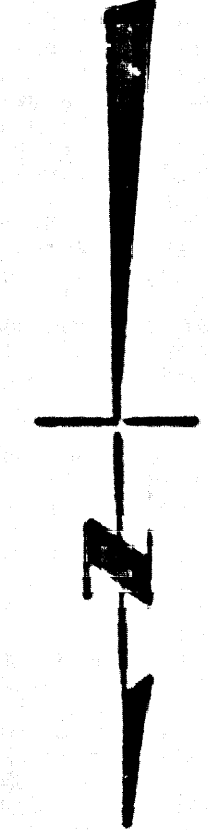


SEE SHEET 2

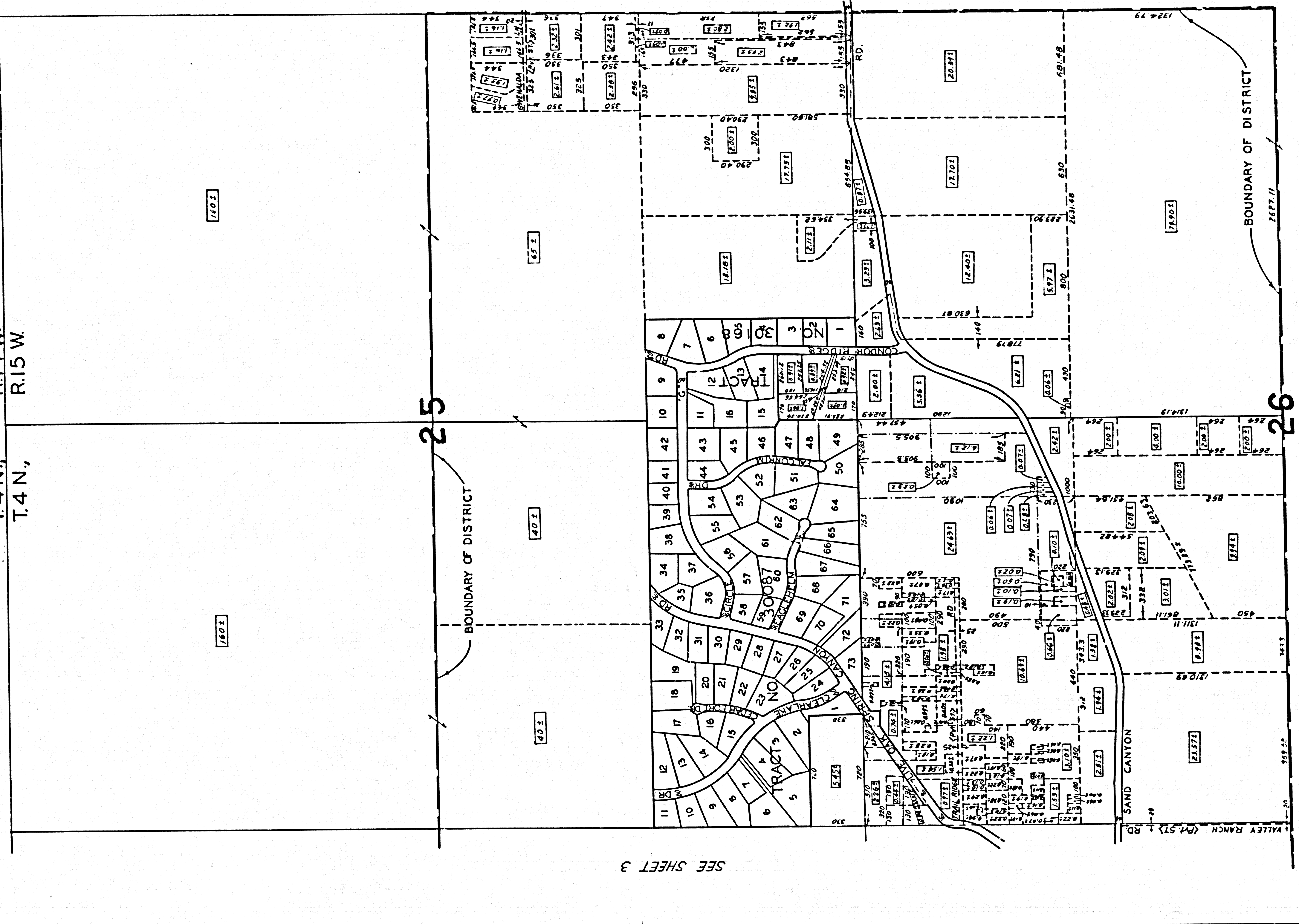
SEE SHEET 4

SHEET 4 OF 5 SHEETS
P.C. 7532

TOP



SCALE 1" = 400'
T. 4 N., R. 14 W.
T. 4 N., R. 15 W.



SEE SHEET 3

SEE SHEET 5

25

26

BOUNDARY OF DISTRICT

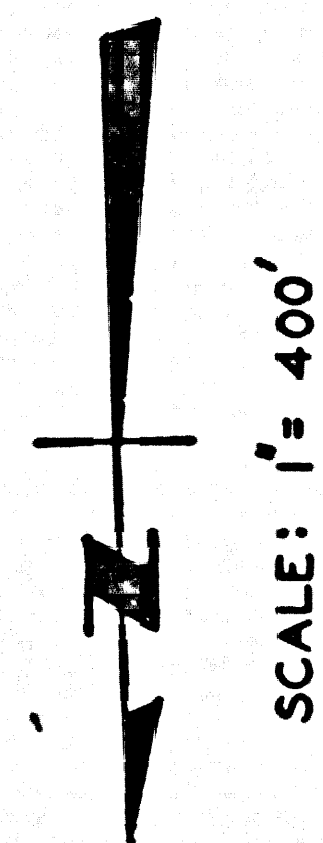
BOUNDARY OF DISTRICT

SAND CANYON

VALLEY RANCH (P.M. 51) RD.

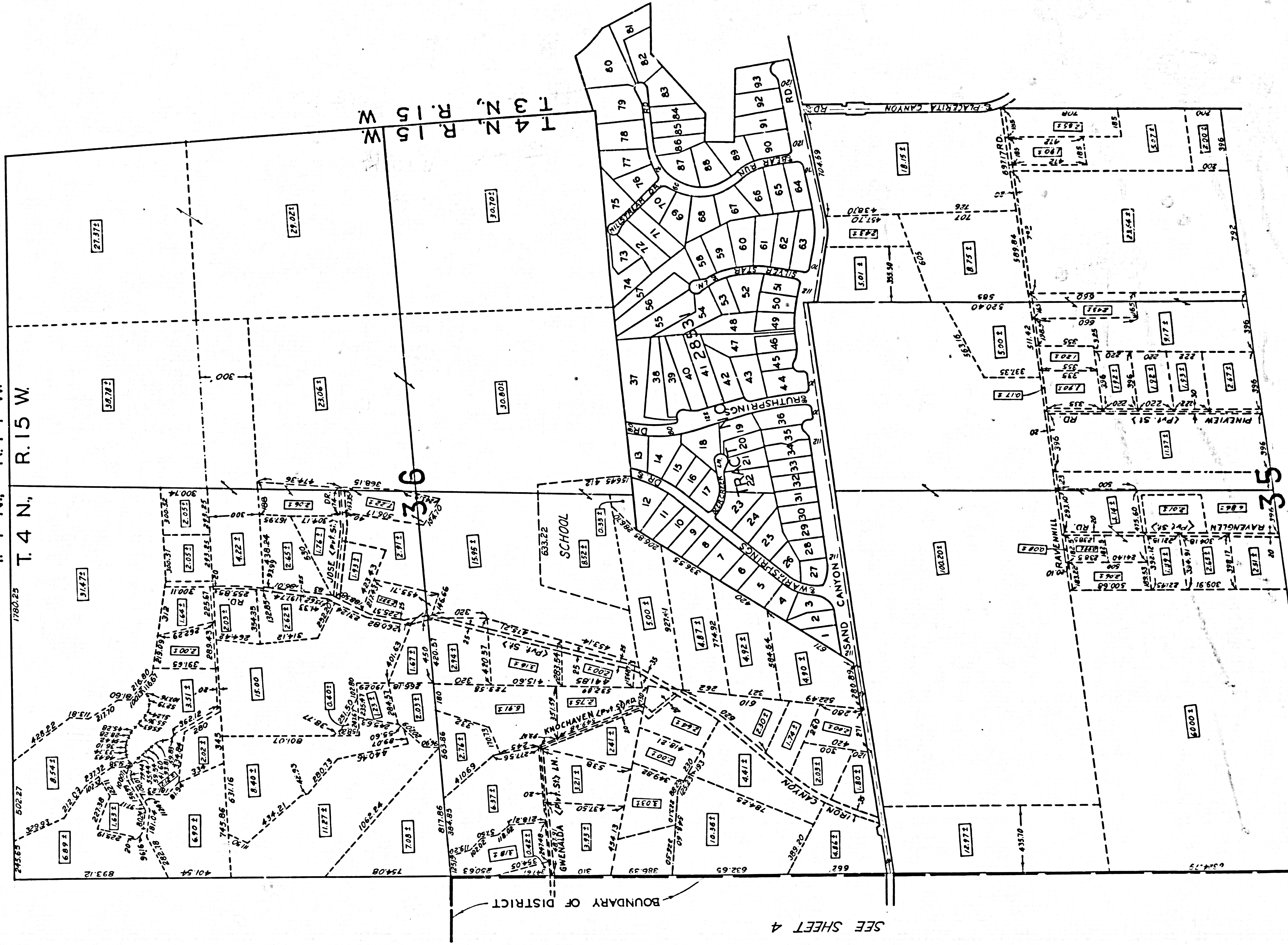
CONOR RIDGE

SHEET 5 OF 5 SHEETS
P.C. 7532



SCALE: 1" = 400'

T. 4 N., R. 14 W.
T. 4 N., R. 15 W.



T. 4 N., R. 15 W.

SEE SHEET 4