

B.M. 5Y 5638 ELEV. 960.472
 BR. CAP IN CONC. MON. 6" DN. ON
 1/2 VENTURA BLVD. EC 331' 93.11
 12.4 MI. W. CORNELL RD.
 MALIBU QUAD. 19 60

DOUBLE SCALE
CALABASAS BLDG. DIST. NO. 9.1

PROFILE, ALIGNMENT AND GRADE OF **P.C. 7534**
SANITARY SEWERS PAGE 1
 TO BE CONSTRUCTED IN

TRACT No 24374
AND OTHERS
PRIVATE CONTRACT NO. 7534

W.S. 93
 5 SHEETS, 2 PAGES
 SCALE: VERT. 1"=4'
 HORIZ. 1"=40'
 NOVEMBER, 1965
 PREPARED IN THE OFFICES OF

MCINTIRE & QUIROS INC.
 REG. C. & NO. 10297

FOR LEGEND SEE PLAN NO. S-1

NOTES:
 GRADES TO WHICH THIS IMPROVEMENT IS TO BE CONSTRUCTED ARE SHOWN ON PLANS AND PROFILES. GRADE POINTS FOR TOP OF CURBS, CENTER LINE OF STREETS, OR CENTER LINE OF ALLEYS ARE SHOWN BY CIRCLES ON PROFILES. AT ALL POINTS BETWEEN DESIGNATED POINTS THE GRADE SHALL BE ESTABLISHED SO AS TO CONFORM TO A STRAIGHT LINE BETWEEN SAID DESIGNATED POINTS.
 ELEVATIONS ARE IN FEET ABOVE U.S.C. & G.S. MEAN SEA LEVEL DATUM OF 1929.
 THIS DRAWING AND THE DATA HEREON ARE HEREBY MADE A PART OF THE SPECIFICATIONS.
 WORK SHALL BE CONSTRUCTED ACCORDING TO STANDARD SPECIFICATIONS DATED MAY 22, 1962, ON FILE IN THE OFFICE OF THE COUNTY ENGINEER AND SHALL BE PROSECUTED ONLY IN THE PRESENCE OF THE COUNTY ENGINEER.
 BEFORE WORK CAN BE STARTED, THE CONTRACTOR MUST OBTAIN A PERMIT TO EXCAVATE IN COUNTY STREETS FROM THE L.A. COUNTY ROAD DEPT. DISTRICT OFFICE NO. 1, 1100 AND PAY A FEE TO THE COUNTY ENGINEER, ROOM 302, COUNTY ENGINEERING BUILDING, 100 WEST SECOND STREET OR, PHILIP WEAVER, COUNTY ENGINEER, REGIONAL OFFICE, SUPPLEMENT TO COVER THE COST OF CONSTRUCTION INSPECTION AND SECOND PLANNING.
 APPROVAL OF THE PLAN BY THE COUNTY OF LOS ANGELES DOES NOT CONSTITUTE A REPRESENTATION AS TO THE ACCURACY OF THE LOCATION OR OF THE EXISTENCE OR NON-EXISTENCE OF ANY UNDERGROUND UTILITY PIPE, OR STRUCTURE WITHIN THE LIMITS OF THIS PROJECT. THE NOTE APPLIES TO ALL PAGES.
 IF WORK IS TO BE DONE IN A STATE HIGHWAY, A PERMIT MUST BE OBTAINED FROM THE STATE OF CALIFORNIA, DIVISION OF HIGHWAYS, 120 SOUTH BRIND STREET, LOS ANGELES, CALIFORNIA.

COUNTY OF LOS ANGELES, CALIFORNIA
JOHN A. LAMBIE, COUNTY ENGINEER
 LAS VIRGENES MUNICIPAL WATER DISTRICT
 APPROVED BY: *[Signature]* ASSISTANT SANITATION ENGINEER
 APPROVED BY: *[Signature]* GENERAL MANAGER - CHIEF ENGINEER
 SUBMITTED BY: *[Signature]* REGIONAL ENGINEER
 CHECKED BY: *[Signature]* REG. C. & NO. 15453
 DATE: MARCH 5, 1964 C.E. 15325

J.N. 0366.81

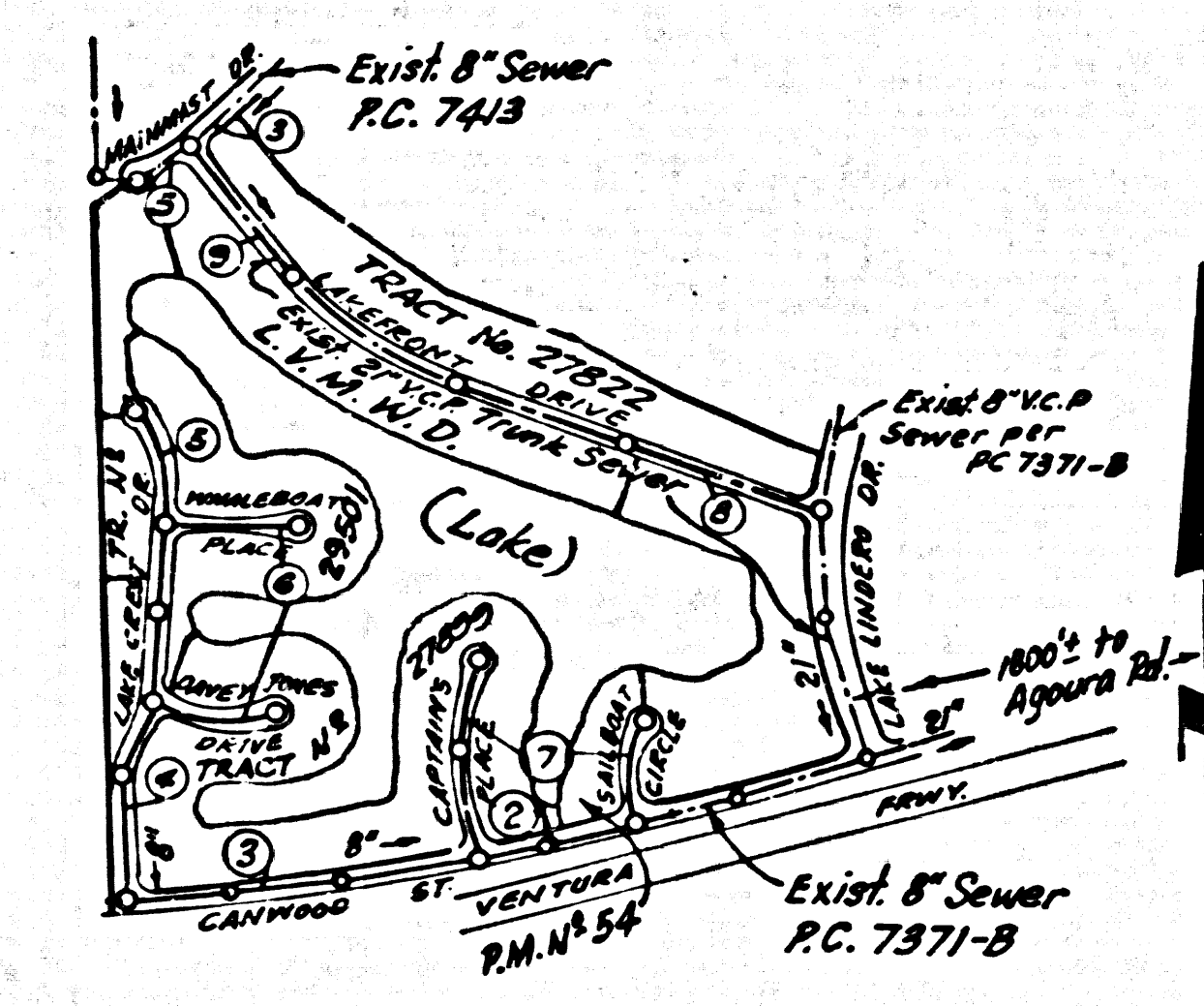
REVISION:
 PAGES 2, 3, 4, 5-B, 6-B, 7-A, 8, 9
 REVISED LEGAL WHERE APPLICABLE
 TO SHOW NEW TRACTS Nos. 27822
 & 27829.
 APPROVED: *[Signature]* OFFICE OF COUNTY ENGINEER

REVISION: MAY 9, 1969
 PAGES 2, 3-A, 4, 5-A, 6, 17
 REVISE LOTS TO SHOW RECORDED
 TRACTS 27815, 29501 AND PARCEL
 MAP 54 (RESUBS OF PORTIONS
 OF TR. AB 56374).
 APPROVED: *[Signature]* OFFICE OF COUNTY ENGINEER

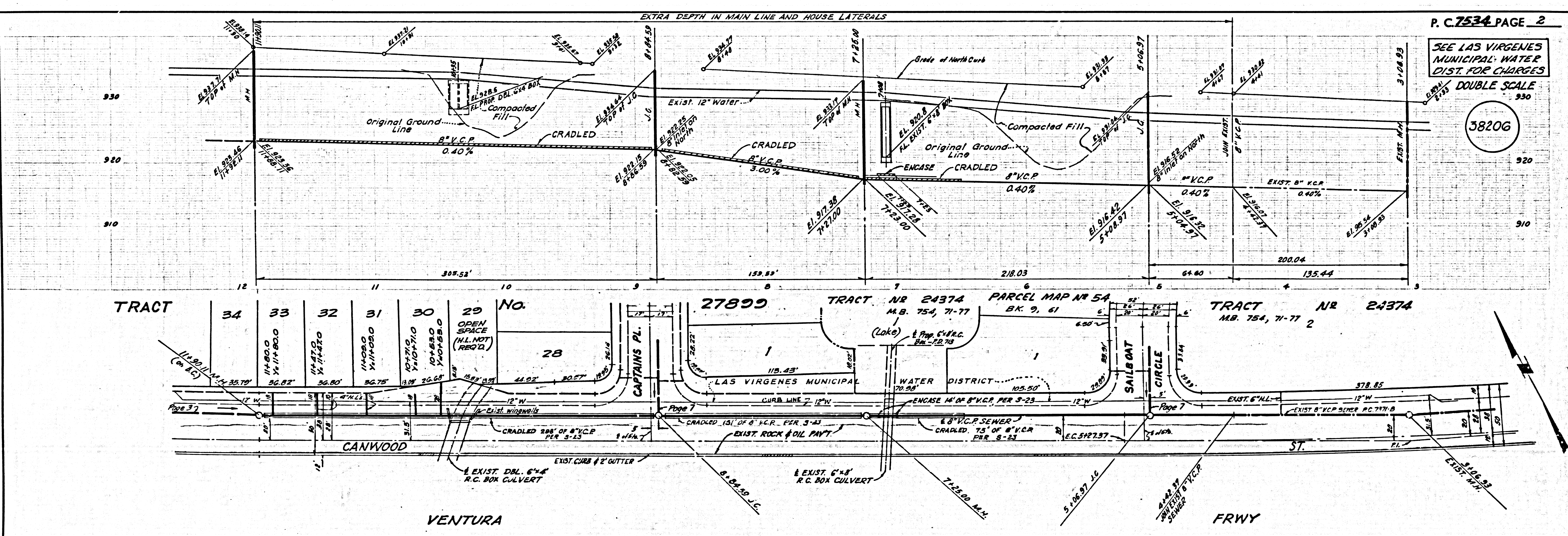
REVISION: NOVEMBER 16, 1967
 PAGES 5, 8, 9
 DELETE LOTS 17 THRU 16
 TRACT 24374, ON SW 1/4
 SIDE LAKEFRONT DRIVE &
 ADD LOTS 1 THRU 28, PARCEL
 MAP 45.
 APPROVED: *[Signature]* OFFICE OF COUNTY ENGINEER

- PROVIDE STAKES ON THE PROPERTY LINE OR PROPERTY LINES PRODUCED AT RIGHT ANGLES TO THE SEWER LINE AT THE CENTER LINE OF EACH MANHOLE.
- NO REPRESENTATIVE OF THE COUNTY ENGINEER WILL SURVEY OR LAY OUT ANY PORTION OF THE WORK.
- THE PRIVATE ENGINEER SHALL FURNISH THE COUNTY ENGINEER WITH GRADE SHEETS AND STATIONINGS FOR ALL HOUSE LATERALS AND "T" BRANCHES AND SHALL PROVIDE STAKES FOR THEM AT THEIR PROPER LOCATIONS WITH STATIONING PLAINLY MARKED. ALL HOUSE LATERALS SHALL BE CONSTRUCTED IN A STRAIGHT ALIGNMENT AT RIGHT ANGLES FROM THE MAIN LINE SEWER EXCEPT AS SHOWN ON THE PLANS. HOUSE LATERALS FROM CHIMNEYS SHALL NOT HAVE AN ANGLE OF LESS THAN 45° WITH THE MAIN LINE SEWER. ANY CHANGE IN ALIGNMENT SHALL BE REQUESTED BY WRITING BY THE PRIVATE ENGINEER.
- THE PRIVATE ENGINEER SHALL FURNISH THE HOUSE LATERAL SUFFICIENT AT THE PROPERTY LINE BELOW THE TOP OF CURB ELEVATION FOR EACH HOUSE LATERAL ON THE GRADE SHEET.
- NO REVISIONS SHALL BE MADE IN THESE PLANS WITHOUT THE APPROVAL OF THE COUNTY ENGINEER.
- THE CONTRACTOR SHALL NOTIFY THE CONSTRUCTION DIVISION BY TELEPHONE, MADISON 9-2747, EXT. 81581, AT LEAST TWENTY-FOUR HOURS BEFORE STARTING ANY WORK UNDER THIS CONTRACT.
- MANHOLES SHALL BE BRICK SEWER STRUCTURES PER S-2. PRECAST CONCRETE MANHOLES PER S-3 OR S-4 MAY BE USED AS AN ALTERNATE IN LOCATIONS APPROVED BY THE COUNTY ENGINEER.
- USE STANDARD MANHOLE FRAMES AND COVERS, S-15, EXCEPT AS NOTED.
- MANHOLE TOPS IN UNIMPROVED RIGHTS-OF-WAY TO BE SIX INCHES ABOVE FINISHED GRADE.
- USE EXTRA STRENGTH PIPE, ALL PIPE IS STANDARD DEPTH EXCEPT AS NOTED.
- USE MECHANICAL COMPRESSION JOINTS FOR ALL V.C.P. JOINTS PER SPEC., SECS. 34, 48 & 49.
- IF A POWER POLE IS WITHIN THREE FEET OF THE SEWER, THE SEWER SHALL BE ENCASED, PER S-23, TWO FEET ON EACH SIDE FROM THE POINT OF INTERFERENCE.
- IF DURING THE COURSE OF CONSTRUCTION IT IS DETERMINED THAT THERE IS LESS THAN FOUR FEET OF COVER OVER THE TOP OF A MAIN LINE OR HOUSE LATERAL V.C.P. SEWER WHICH IS NOT INDICATED ON THE PLANS, THE PIPE SHALL BE ENCASED PER S-23, UNLESS OTHERWISE APPROVED BY THE COUNTY ENGINEER.
- HOUSE LATERALS TO BE CONSTRUCTED WITH INVERTS AT PROPERTY LINE 4 FEET BELOW CURB GRADE EXCEPT AS NOTED.
- RESURFACE ALL TRENCHES WITHIN PAVED AREAS TO MEET A.L. COUNTY ROAD DEPT. OR CALIFORNIA STATE HIGHWAY REQUIREMENTS IN ACCORDANCE WITH PERMITS.
- FOR ALLOWABLE LEAKAGE TEST USE FORMULA NO. 2, SPEC. 1, SEC. 84.
- ALL STATE AND LOCAL TRENCH SAFETY ORDERS WILL BE STRICTLY ENFORCED.
- CONSTRUCTION IN FILLED AREA:
 - AN ACCEPTABLE CERTIFICATION OF COMPACTION TESTS RESULTS SHALL BE SUBMITTED TO THE CONSTRUCTION DIVISION. COMPACTION TESTS ARE TO BE MADE IN ACCORDANCE WITH A.S.T.M. STANDARD METHOD OR TESTS 9-50-45T.
 - NO CONSTRUCTION IS PERMITTED IN THE FILLED AREAS WHERE THE RELATIVE DENSITY OF COMPACTION IS LESS THAN 80%.
 - IF THE RELATIVE DENSITY OF COMPACTION IS LESS THAN 90% ALL MAIN LINE AND HOUSE LATERALS SHALL BE CRADLED PER S-23 OR HAVE A SPECIAL BASE COURSE PER S-21. SPECIAL MANHOLE BASES PER S-14 ARE REQUIRED.
 - IF THE RELATIVE DENSITY OF COMPACTION IS 90% OR GREATER THE SPECIAL PROVISIONS IN "C" ARE NOT REQUIRED.
- FIGURE IN CIRCLE INDICATES INVERT DEPTH OF HOUSE LATERAL AT PROP. LINE BELOW CURB GRADE.

COLLECT CHARGES AS INDICATED
[Signature]



INDEX MAP
TRACT No 24374
PC. 7534
 Scale: 1"=600'
 Note: Numbers in circles indicate page number.

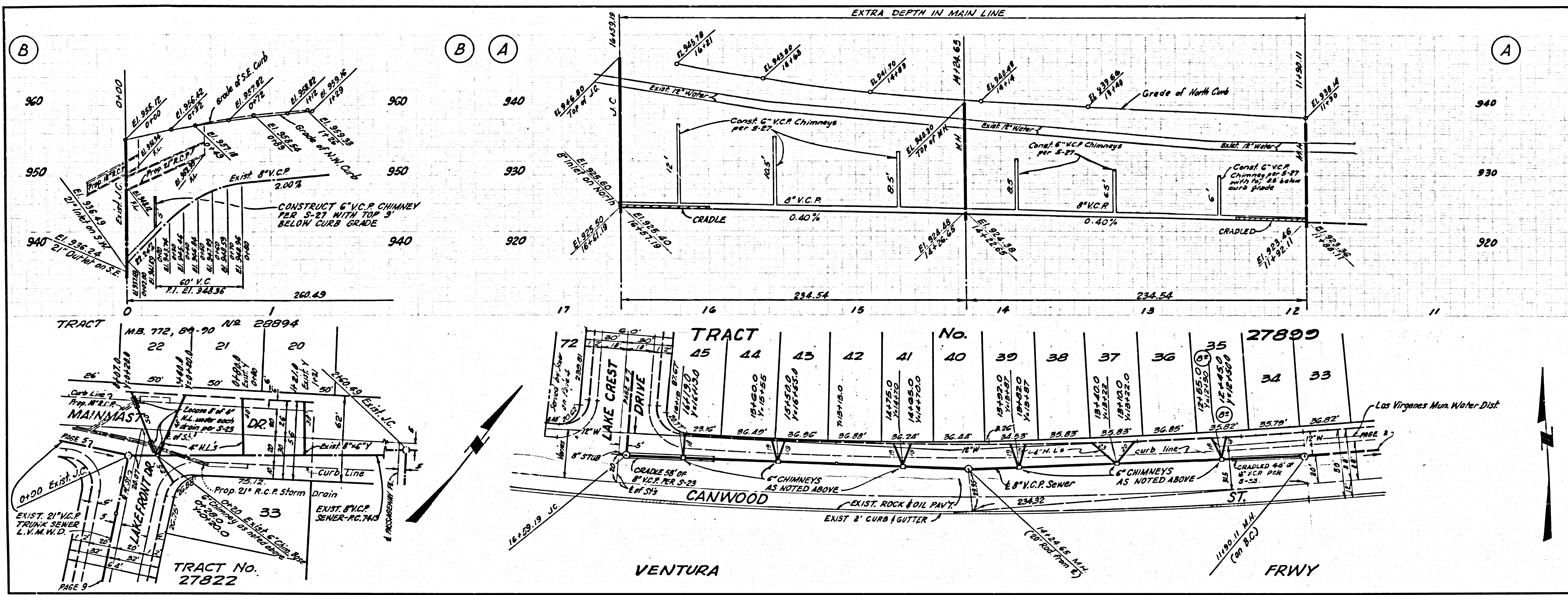


P. C. 7534 PAGE 2

SEE LAS VIRGENES MUNICIPAL WATER DIST. FOR CHARGES
DOUBLE SCALE
 38206

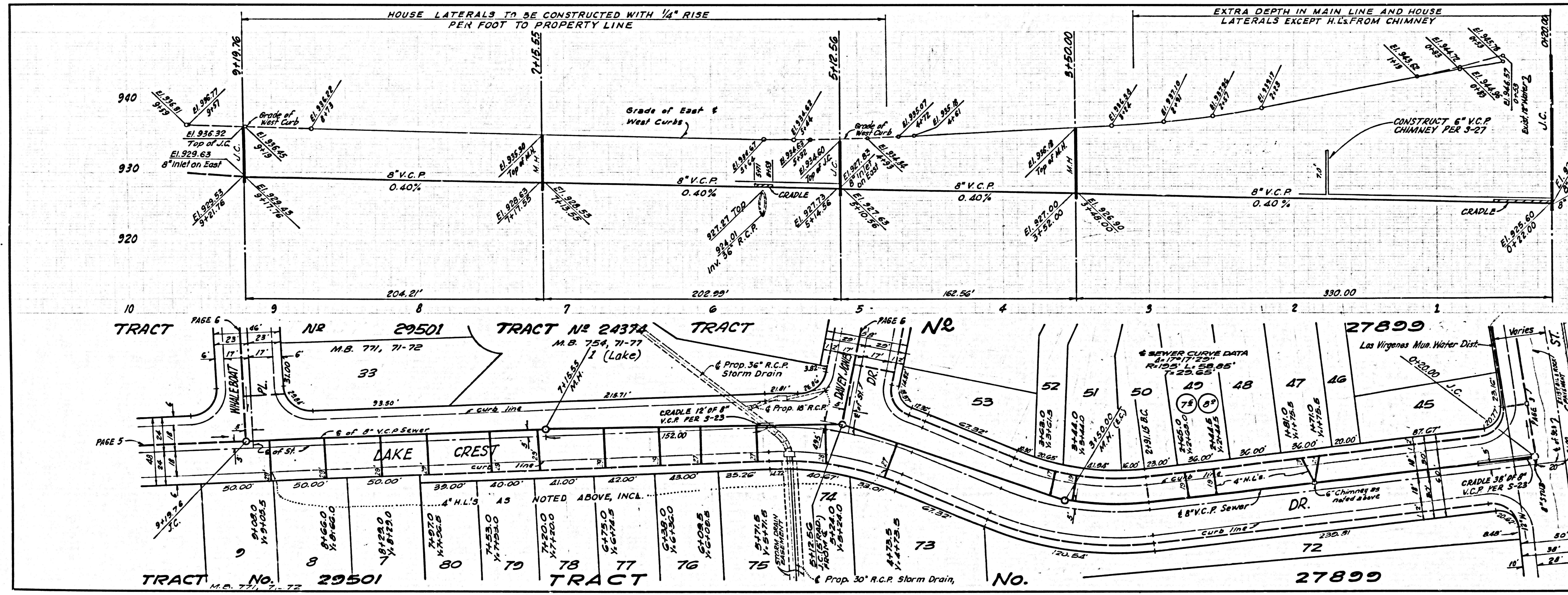
SEE LAS VIRGENES MUNICIPAL WATER DIST. FOR CHARGES
DOUBLE SCALE

38207

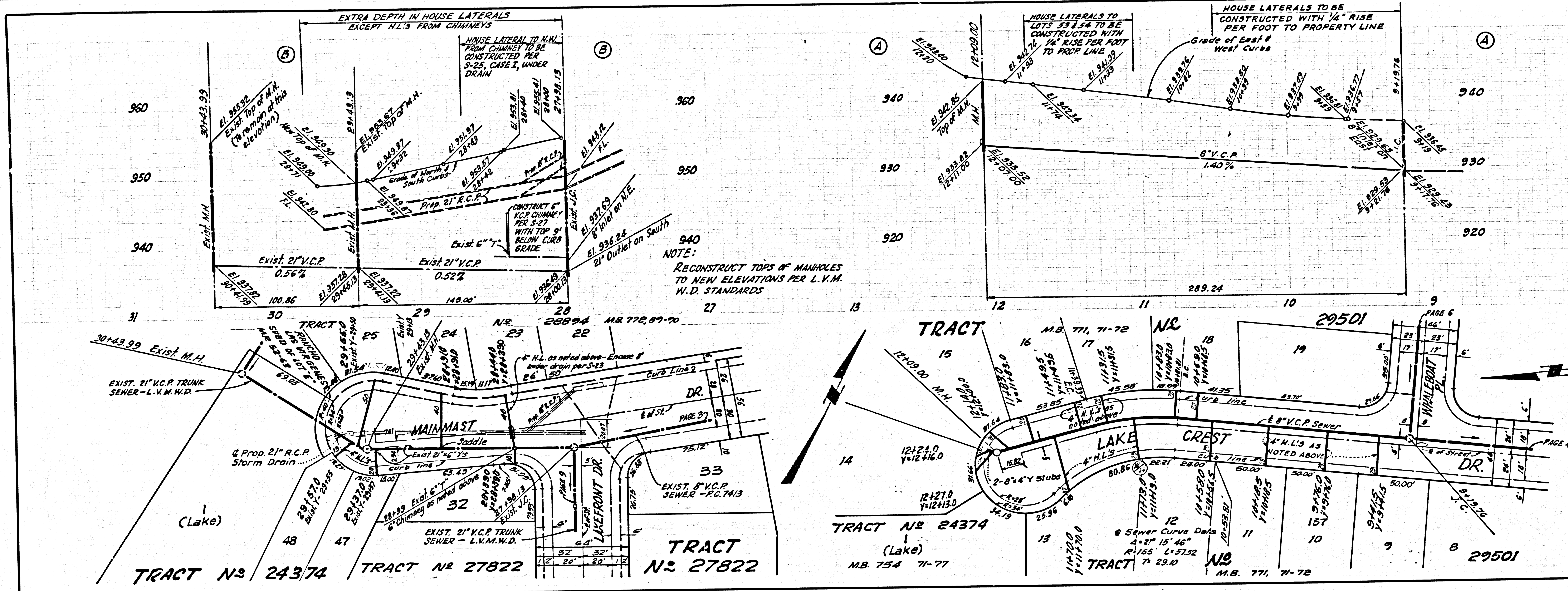


DOUBLE SCALE
SEE LAS VIRGENES MUNICIPAL WATER DIST. FOR CHARGES

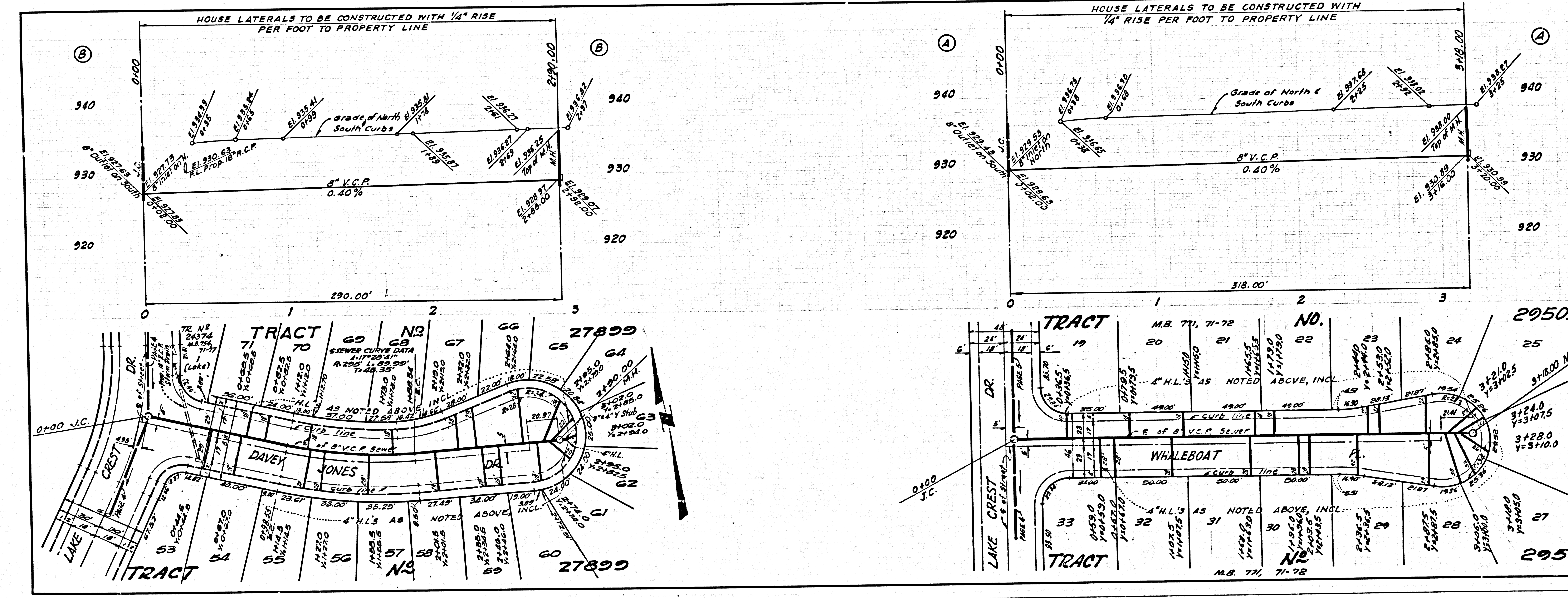
38208



38209

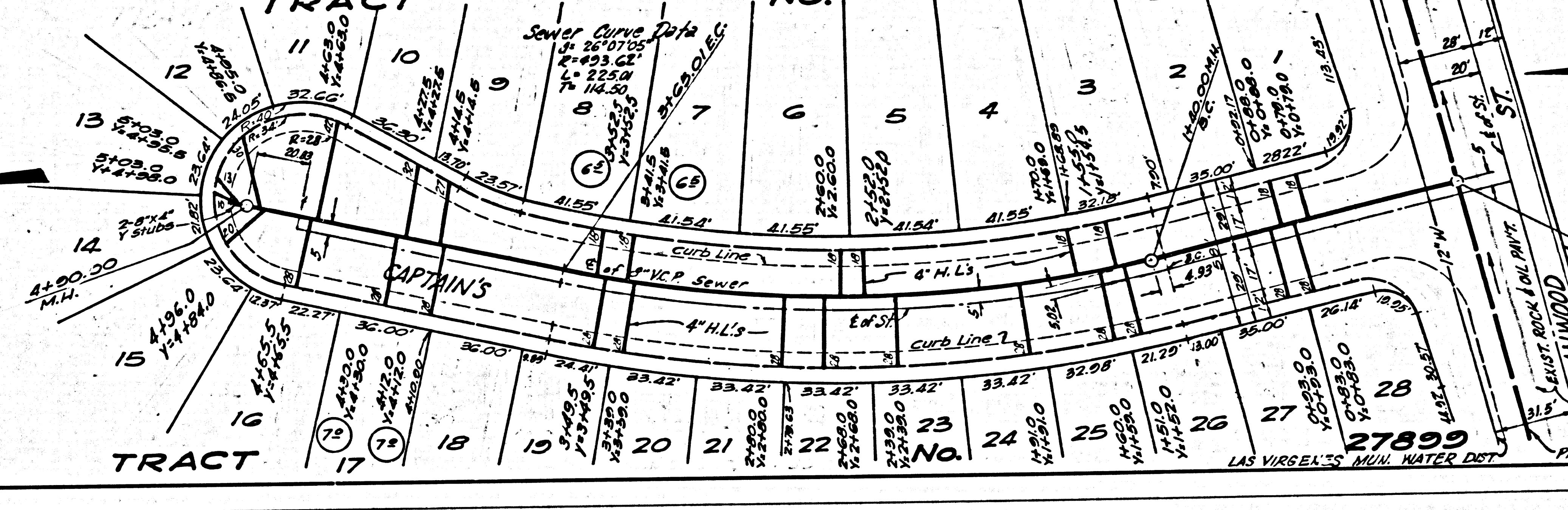
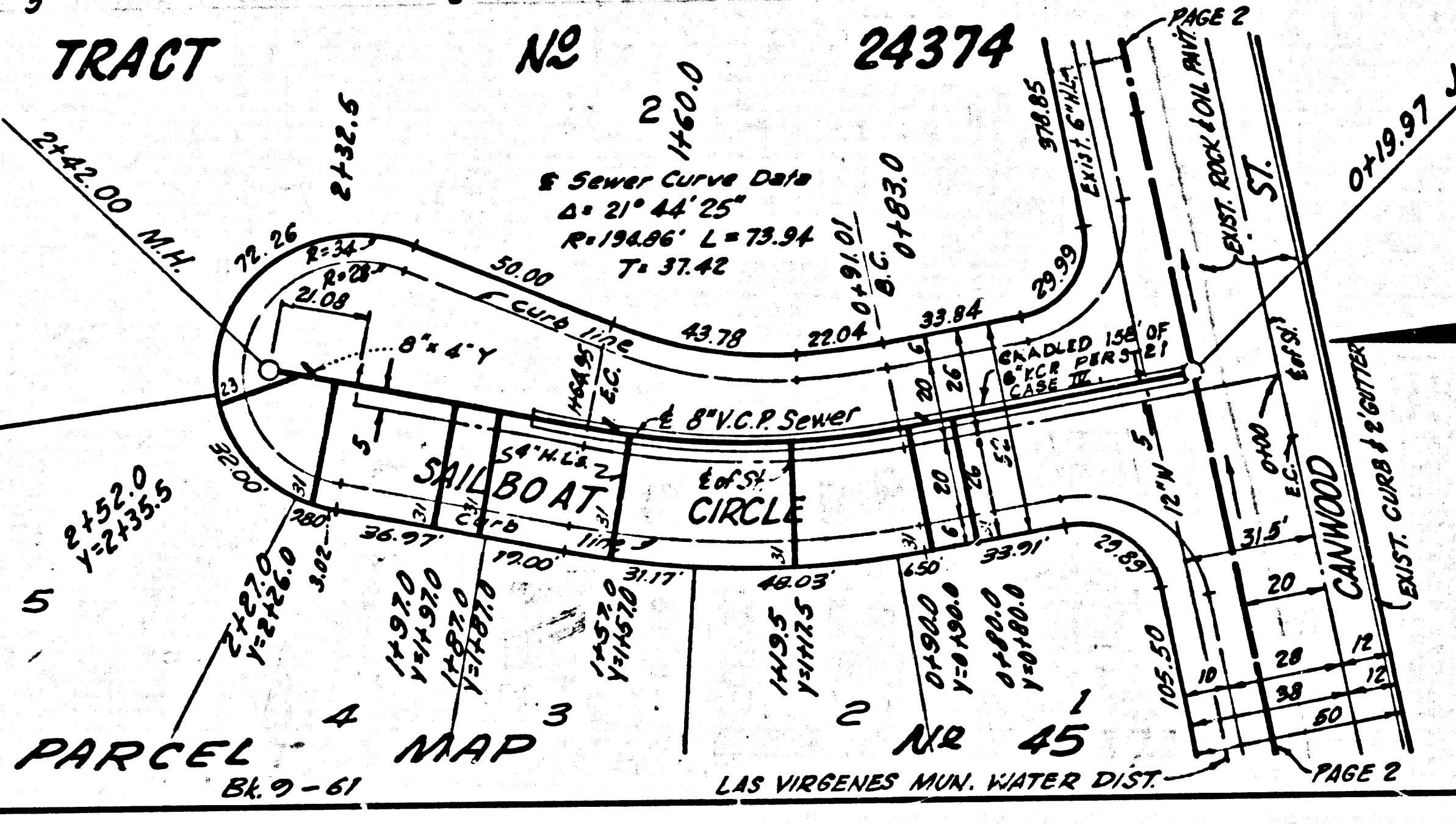
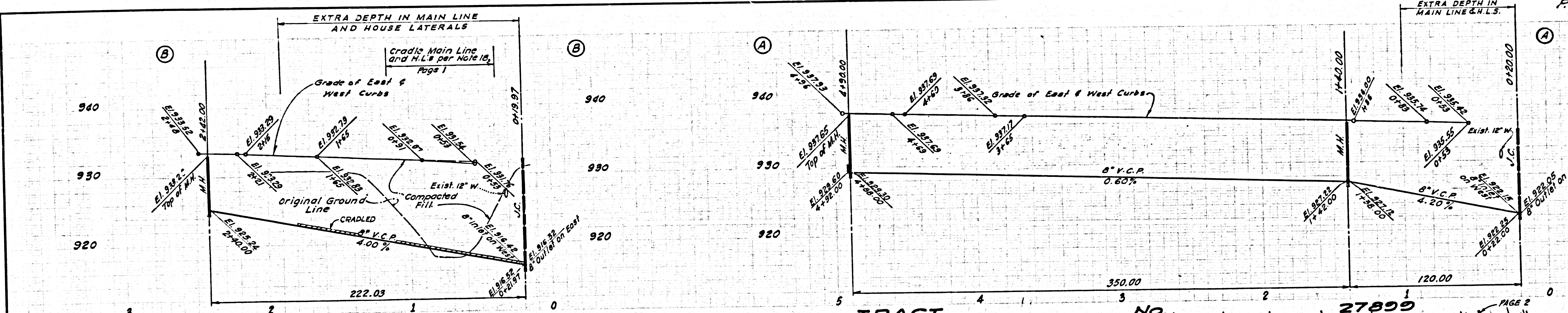


38210



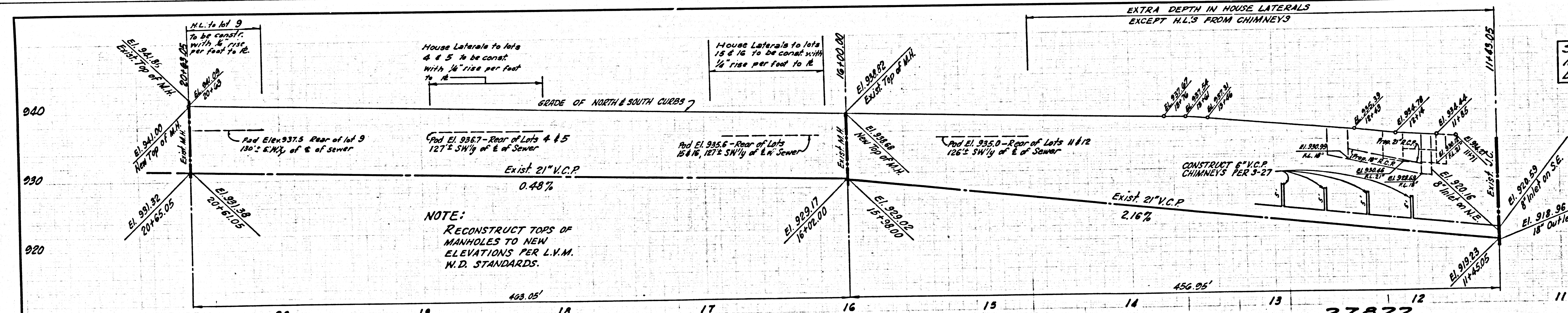
DOUBLE SCALE
SEE LAS VIRGENES
MUNICIPAL WATER
DIST. FOR CHARGES

38211

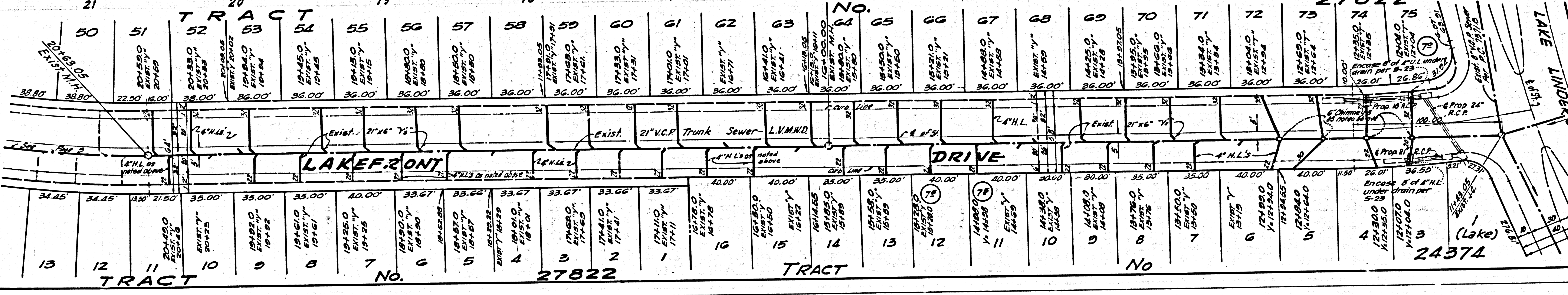


DOUBLE SCALE
SEE LAS VIRGENES
MUNICIPAL WATER
DIST. FOR CHARGES

38212



NOTE:
RECONSTRUCT TOPS OF
MANHOLES TO NEW
ELEVATIONS PER L.V.M.
W.D. STANDARDS.



DOUBLE SCALE
SEE LAS VIRGENES
MUNICIPAL WATER
DIST. FOR CHARGES
960

NOTE:
RECONSTRUCT TOPS OF
MANHOLES TO NEW
ELEVATIONS PER L.V.M.
W.D. STANDARDS.

