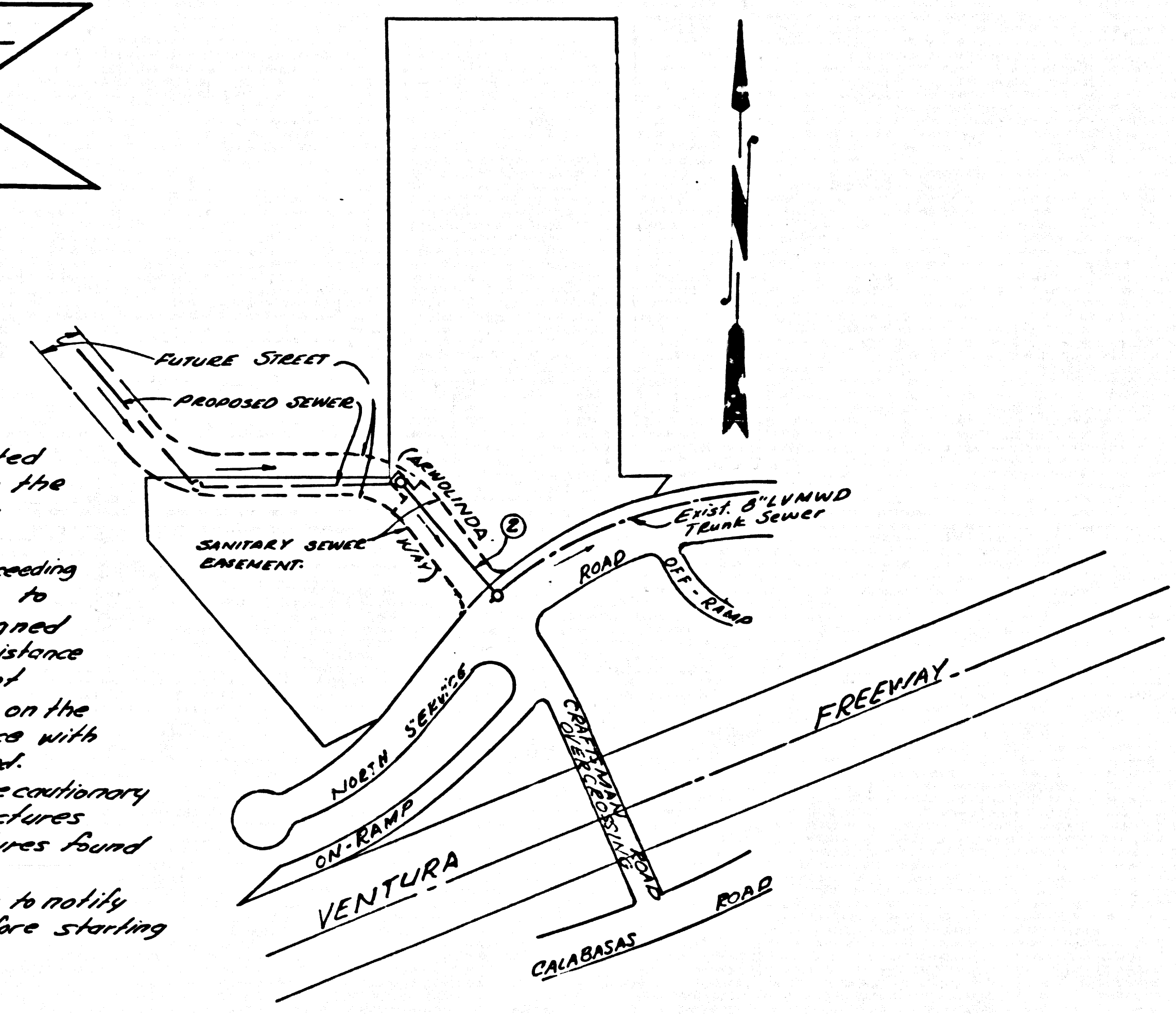


B.M. SY 5596 ELEV. 1014.072
 Brass cap monument in 2" I.P. 10" dia
 on E. Ventura Blvd. ± 2.3 mi East of Las
 Virgenes Rd.
 Malibu QUAD. 19 60

All underground utilities or structures reported by the owner or others and those shown on the records examined are indicated with their approximate location and extent.
 The owner by accepting these plans or proceeding with improvements pursuant thereto agrees to assume liability and to hold the undersigned harmless for any damages resulting to the existence of the underground utilities or structure not reported to the undersigned, not indicated on the public records examined, located or variance with that reported or shown on records examined.
 The contractor is required to take due precautionary measures to protect the utilities and structures shown and any other utilities or structures found at the site.
 It shall be the contractor's responsibility to notify the owners of the utilities or structures before starting work.

Ronald W. Spindler
 RONALD W. SPINDLER R.C.E. 13194



INDEX MAP
 Scale 1" = 200'
 P.C. 7540

DOUBLE SCALE
 CALABASAS BLDG. DIST. NO. 91

PROFILE, ALIGNMENT AND GRADE OF P.C. 7540
 SANITARY SEWERS PAGE 1
 TO BE CONSTRUCTED IN

ARWOLINDA WAY
 PRIVATE CONTRACT NO. 7540

W.S. 60
 1 SHEET 2 PAGES
 SCALE: VERT. 1" = 4' HORIZ. 1" = 40' DECEMBER, 1965

38505

PREPARED IN THE OFFICES OF
 STEEL SPINDLER INC.
 13047 VENTURA BLVD. STUDIO CITY
 BY *Ronald W. Spindler*
 REG. C.E. NO. 13194

FOR LEGEND SEE PLAN NO. S-1

- NOTES:
1. PROPERTY STAKES ON THE PROPERTY LINE OR PROPERTY LINES PRODUCED AT RIGHT ANGLES TO THE SEWER LINE AT THE CENTER LINE OF EACH MANHOLE.
 2. NO REPRESENTATIVE OF THE COUNTY ENGINEER WILL SURVEY OR LAY OUT ANY PORTION OF THE WORK.
 3. THE PRIVATE ENGINEER SHALL FURNISH THE COUNTY ENGINEER WITH GRADE SHEETS AND STATIONING FOR ALL HOUSE LATERALS AND "T" BRANCHES AND SHALL PROVIDE STAKES FOR THEM AT THEIR PROPER LOCATIONS WITH STATIONING PLAINLY MARKED. ALL HOUSE LATERALS SHALL BE CONSTRUCTED IN A STRAIGHT ALIGNMENT AT RIGHT ANGLES FROM THE MAIN LINE SEWER EXCEPT AS SHOWN ON THE PLANS. HOUSE LATERALS FROM CHIMNEYS SHALL NOT HAVE AN ANGLE OF LESS THAN 45° WITH THE MAIN LINE SEWER. ANY CHANGE IN ALIGNMENT SHALL BE REQUESTED IN WRITING BY THE PRIVATE ENGINEER.
 4. THE PRIVATE ENGINEER SHALL FURNISH THE HOUSE LATERAL DEPTH AT THE PROPERTY LINE BELOW THE TOP OF CURB ELEVATION FOR EACH HOUSE LATERAL ON THE GRADE SHEET.
 5. NO REVISIONS SHALL BE MADE IN THESE PLANS WITHOUT THE APPROVAL OF THE COUNTY ENGINEER.
 6. THE CONTRACTOR SHALL NOTIFY THE CONSTRUCTION DIVISION BY TELEPHONE, MADISON 9-4747, EXT. 8153, AT LEAST TWENTY-FOUR HOURS BEFORE STARTING ANY WORK UNDER THIS CONTRACT.
 7. MANHOLES SHALL BE RICE SEWER STRUCTURES PER S.3. PRECAST CONCRETE MANHOLES PER S-3 ON S-6 MAY BE USED AS AN ALTERNATE IN LOCATIONS APPROVED BY THE COUNTY ENGINEER.
 8. USE STANDARD MANHOLE FRAMES AND COVERS, S-15, EXCEPT AS NOTED.
 9. MANHOLE TOPS IN UNIMPROVED RIGHTS-OF-WAY TO BE SIX INCHES ABOVE FINISHED GRADE.
 10. USE EXTRA STRENGTH PIPE. ALL PIPE IS STANDARD DEPTH EXCEPT AS NOTED.
 11. USE MECHANICAL COMPRESSION JOINTS FOR ALL V.C.P. JOINTS PER SPEC. SECS. 34, 48 & 49.
 12. IF A POWER POLE IS WITHIN THREE FEET OF THE SEWER, THE SEWER SHALL BE ENCASED, PER S-23, TWO FEET ON EACH SIDE FROM THE POINT OF INTERFERENCE.
 13. IF DURING THE COURSE OF CONSTRUCTION IT IS DETERMINED THAT THERE IS LESS THAN FOUR FEET OF COVER OVER THE TOP OF A MAIN LINE OR HOUSE LATERAL V.C.P. SEWER WHICH IS NOT INDICATED ON THE PLANS, THE PIPE SHALL BE ENCASED PER S-23, UNLESS OTHERWISE APPROVED BY THE COUNTY ENGINEER.
 14. HOUSE LATERALS TO BE CONSTRUCTED WITH INVERTS AT PROPERTY LINE 6 FEET BELOW CURB GRADE EXCEPT AS NOTED.
 15. RESURFACE ALL TRENCHES WITHIN PAVED AREAS TO MEET L.A. COUNTY ROAD DEPT. OR CALIFORNIA STATE HIGHWAY REQUIREMENTS IN ACCORDANCE WITH PERMITS.
 16. FOR ALLOWABLE LEAKAGE TEST USE FORMULA NO. 2, SPEC. S. 54.
 17. ALL STATE AND LOCAL TRENCH SAFETY ORDERS WILL BE STRICTLY ENFORCED.
 18. Leakage and infiltration tests shall be conducted in the presence of a District representative. Maximum leakage or infiltration is .033 gallons per minute per inch diameter per 1000 feet.

NOTE:
 GRADES TO WHICH THIS EMPLOYMENT IS TO BE CONSTRUCTED ARE SHOWN ON PLANS AND PROFILES. GRADE POINTS FOR TOP OF CURBS, CENTER LINE OF STREETS, OR CENTER LINE OF ALLEYS ARE SHOWN BY CIRCLES ON PLANS. ALL POINTS BETWEEN DESIGNATED POINTS THE GRADE SHALL BE ESTABLISHED SO AS TO COMFORM TO A STRAIGHT LINE DRAWN BETWEEN SAID DESIGNATED POINTS. ELEVATIONS ARE IN FEET ABOVE U.S.C. & G.S. SEA LEVEL DATUM OF 1929.
 THIS DRAWING AND THE DATA HEREON ARE NECESSARY MADE A PART OF THE SPECIFICATIONS.
 WORK SHALL BE CONSTRUCTED ACCORDING TO STANDARD SPECIFICATIONS DATED May 1964 ON FILE IN THE OFFICE OF THE COUNTY ENGINEER AND SHALL BE PROSECUTED ONLY IN THE PRESENCE OF THE COUNTY ENGINEER.
 BEFORE WORK CAN BE STARTED, THE CONTRACTOR MUST OBTAIN A PERMIT TO EXCAVATE IN COUNTY STREETS FROM THE L.A. COUNTY ROAD DEPT., DISTRICT OFFICE NO. 2, AND PAY A FEE TO THE COUNTY ENGINEER, ROOM 308, COUNTY ENGINEER'S BUILDING, 100 WEST SECOND STREET OR *Public Services Department, 100 West Second Street, Los Angeles, California*. PERMIT FEE TO COVER THE COST OF CONSTRUCTION INSPECTION AND RECORD PLANS.
 APPROVAL OF THIS PLAN BY THE COUNTY OF LOS ANGELES DOES NOT CONSTITUTE A REPRESENTATION AS TO THE ACCURACY OF THE LOCATION OR OF THE EXISTENCE OR NON-EXISTENCE OF ANY UNDERGROUND UTILITY PIPE, OR STRUCTURE WITHIN THE LIMITS OF THE PROJECT. THIS NOTE APPLIES TO ALL PAGES.
 IF WORK IS TO BE DONE IN A STATE HIGHWAY, A PERMIT MUST BE OBTAINED FROM THE STATE OF CALIFORNIA, DIVISION OF HIGHWAYS, 120 SOUTH SPRING STREET, LOS ANGELES, CALIFORNIA.

COUNTY OF LOS ANGELES, CALIFORNIA
 JOHN A. LAMBIE, COUNTY ENGINEER
 APPROVED BY *Robert E. Keller* ASSISTANT SANITATION ENGINEER
 APPROVED BY *J. W. Spindler* OFFICE ENGINEER

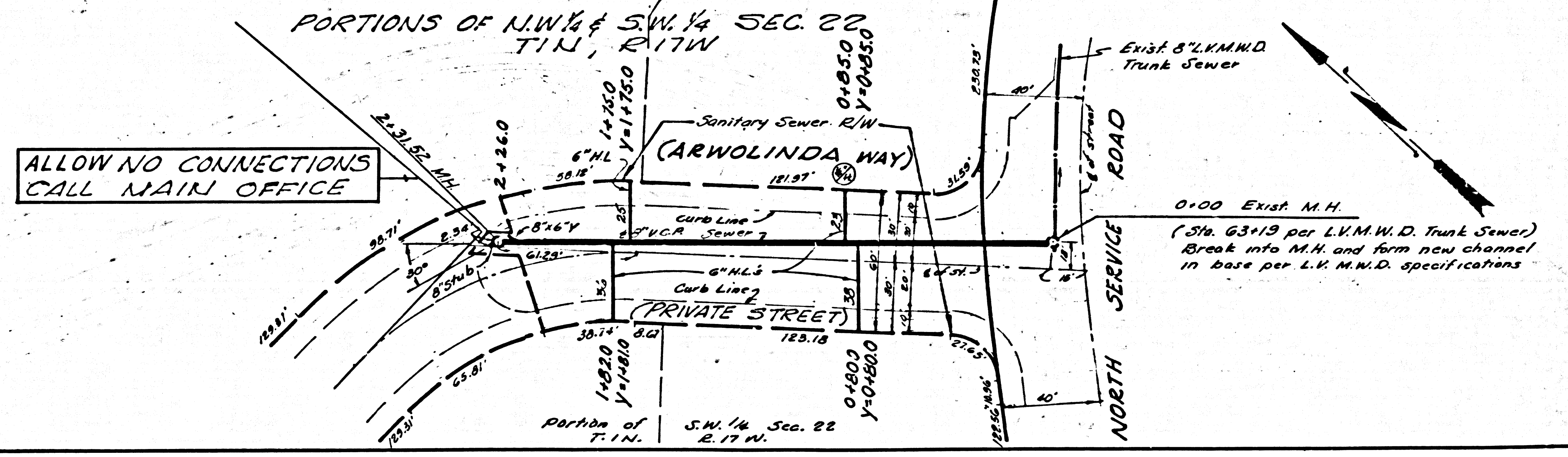
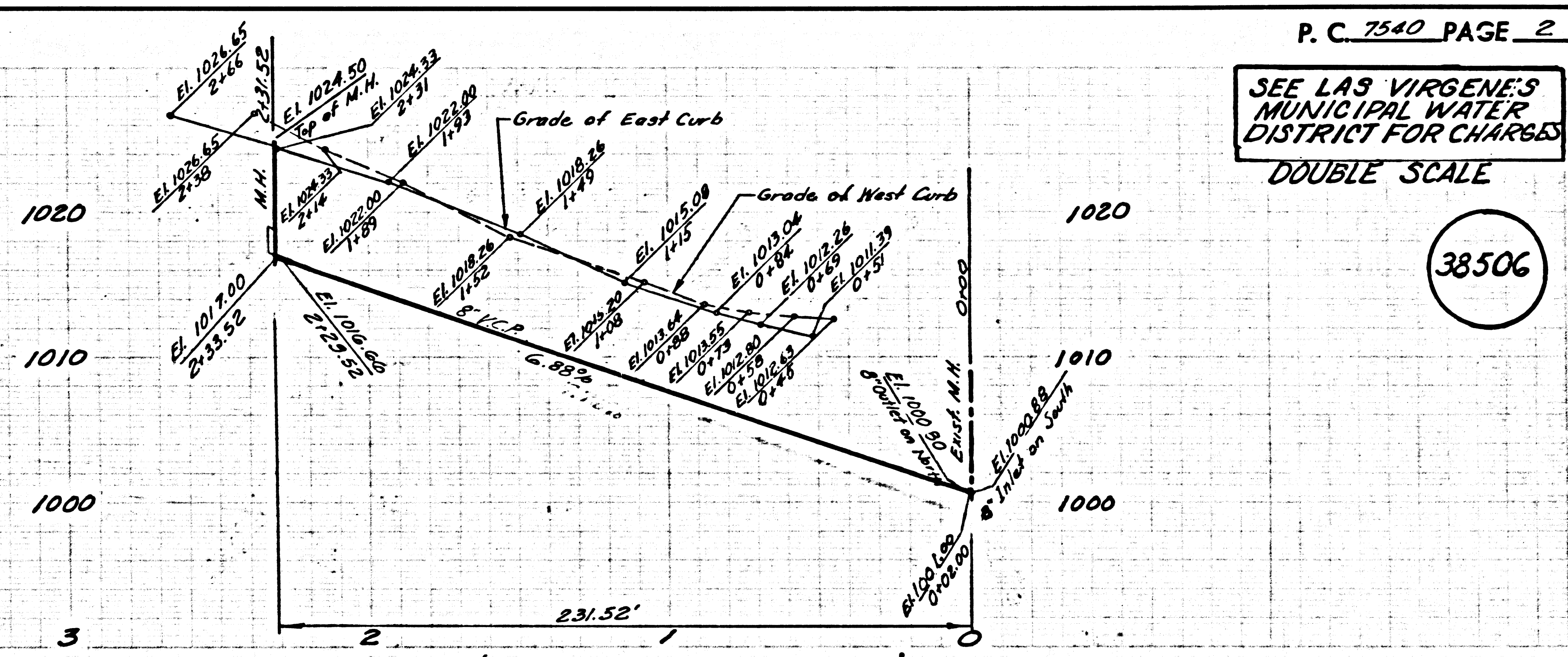
CHECKED BY *Howard J. Valasek*
 S.A.C.E. NO. 10453

Approved: *John R. Thibault* 5/26/66
 Industrial Waste Division

COLLECT CHARGES AS INDICATED
Ronald W. Spindler 2-16-66

REVISED Inlet/Outlet Elevations on Manhole at Sta. 0+00
Howard J. Valasek 8-25-66

J.N. 0366.85



ALLOW NO CONNECTIONS CALL MAIN OFFICE

0+00 Exist. M.H.
 (Sta. 63+19 per L.H.M.W.D. Trunk Sewer)
 Break into M.H. and form new channel in base per L.H.M.W.D. specifications