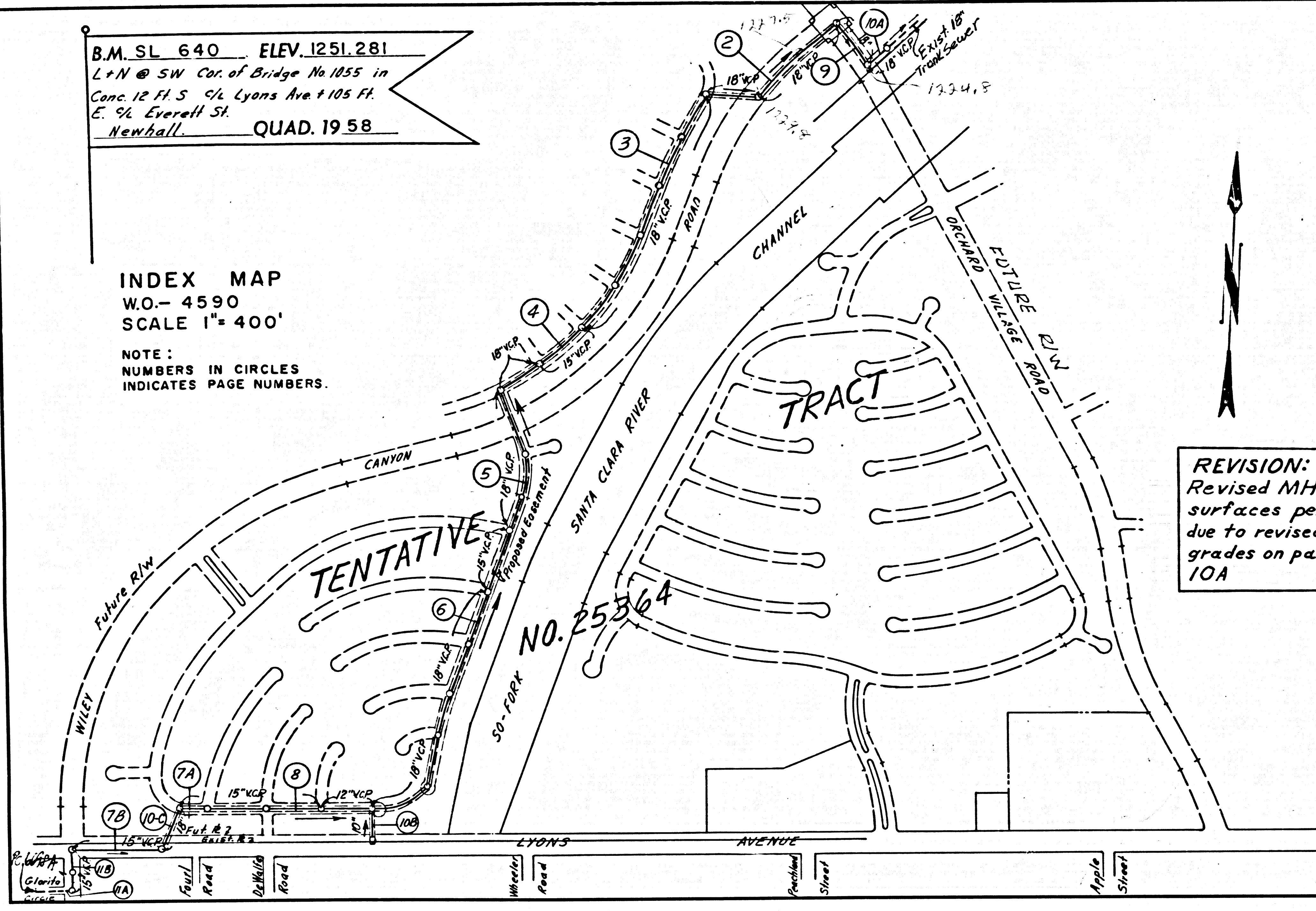


B.M. SL 640 ELEV. 1251.281
 L & N @ SW Cor. of Bridge No 1055 in
 Conc. 12 ft S 1/4 Lyons Ave 105 ft
 E. 1/4 Everett St.
 Newhall. QUAD. 19 58

INDEX MAP
 W.O. - 4590
 SCALE 1" = 400'
 NOTE:
 NUMBERS IN CIRCLES
 INDICATES PAGE NUMBERS.



REVISION: 1-31-69
 Revised MH tops &
 surfaces per PC8197
 due to revised street
 grades on page 2, 9, &
 10A

DOUBLE SCALE
 NEW HALL BLDG. DIST. NO. 8.2

- NOTE:
1. PROVIDE STAKES ON THE PROPERTY LINE OR PROPERTY LINES PRODUCED AT RIGHT ANGLES TO THE SEWER LINE AT THE CENTER LINE OF EACH MANHOLE.
 2. NO REPRESENTATIVE OF THE COUNTY ENGINEER WILL SURVEY OR LAY OUT ANY PORTION OF THE WORK.
 3. THE PRIVATE ENGINEER SHALL FURNISH THE COUNTY ENGINEER WITH GRADE SHEETS AND STATIONING FOR ALL BRANCHES AND Y BRANCHES AND SHALL PROVIDE STAKES FOR THEM AT THEIR PROPER LOCATIONS WITH STATIONING PLAINLY MARKED. ALL BRANCHES AND Y BRANCHES SHALL BE CONSTRUCTED IN ACCORDANCE WITH THE SPECIFICATIONS FOR THE SEWER LINE. THE SEWER LINE SHALL BE CONSTRUCTED IN ACCORDANCE WITH THE SPECIFICATIONS FOR THE SEWER LINE. ANY CHANGE IN ALIGNMENT SHALL BE REQUIRED IN WRITING BY THE PRIVATE ENGINEER.
 4. THE PRIVATE ENGINEER SHALL FURNISH THE HOUSE LATERAL DEPTH AT THE PROPERTY LINE BELOW THE TOP OF CURB ELEVATION FOR EACH HOUSE LATERAL ON THE GRADE SHEET.
 5. NO REVISIONS SHALL BE MADE IN THESE PLANS WITHOUT THE APPROVAL OF THE COUNTY ENGINEER.
 6. THE CONTRACTOR SHALL NOTIFY THE CONSTRUCTION DIVISION BY TELEPHONE, MADISON 9-4747, EX. 8153, AT LEAST TWENTY-FOUR HOURS BEFORE STARTING ANY WORK UNDER THIS CONTRACT.
 7. MANHOLES SHALL BE BRICK SEWER STRUCTURES PER S-3 - PRECAST CONCRETE MANHOLES PER S-5 OR S-6 MAY BE USED AS AN ALTERNATE IN LOCATIONS APPROVED BY THE COUNTY ENGINEER.
 8. USE STANDARD MANHOLE FRAMES AND COVERS, S-15, EXCEPT AS NOTED.
 9. MANHOLE TOPS IN UNIMPROVED RIGHTS-OF-WAY TO BE SIX INCHES ABOVE FINISHED GRADE.
 10. USE EXTRA STRENGTH PIPE. ALL PIPE IS STANDARD DEPTH EXCEPT AS NOTED.
 11. USE COMBHT SHORTS OR MECHANICAL COMPRESSION JOINTS FOR ALL V.C.P. JOINTS PER SPEC., SECS. 36 & 46.
 12. WHENEVER RIVER CROSSINGS ARE ENCOUNTERED DURING THE CONSTRUCTION OF THE SEWER, THE V.C.P. JOINTS SHALL BE OF JOINT COMPANION PER S-15, S-16, S-17, OR MECHANICAL COMPRESSION JOINTS PER SPEC., SEC. 36.
 13. IF A POWER POLE IS WITHIN THREE FEET OF THE SEWER, THE SEWER SHALL BE ENCASED, PER S-23 TWO FEET ON EACH SIDE FROM THE POINT OF INTERFERENCE.
 14. IF DURING THE COURSE OF CONSTRUCTION IT IS DETERMINED THAT THERE IS LESS THAN FOUR FEET OF COVER OVER THE TOP OF A MAIN LINE OR HOUSE LATERAL V.C.P. SEWER WHICH IS NOT INDICATED ON THE PLANS, THE PIPE SHALL BE ENCASED PER S-23 UNLESS OTHERWISE APPROVED BY THE COUNTY ENGINEER.
 15. HOUSE LATERALS TO BE CONSTRUCTED WITH OVERSIZING OF PROPOSED LINE TO ALLOW OVERSIZING TO BE MADE WITHOUT PERMITS.
 16. RESURFACE ALL TRENCHES WITHIN PAVED AREAS TO MEET L.A. COUNTY ROAD DEPT. OR CALIFORNIA STATE HIGHWAY REQUIREMENTS IN ACCORDANCE WITH PERMITS.
 17. FOR ALLOWABLE LEAKAGE TEST USE FORMULA NO. 1, SPEC., SEC. 54.
 18. ALL STATE AND LOCAL TRENCH SAFETY ORDERS WILL BE RIGIDLY ENFORCED.
 19. ALL JOINTS BETWEEN CAST IRON PIPE AND VITRIFIED CLAY PIPE SHALL BE MADE WITH A RUBBER SLEEVE JOINT (WITH HOODS, IF NECESSARY) PER STANDARD SPECIFICATIONS, SEC. 36, OR APPROVED EQUAL.

PROFILE ALIGNMENT AND GRADE OF
 SANITARY SEWERS PAGE 1
 TO BE CONSTRUCTED IN R W

NORTH OF LYONS AVENUE
 PRIVATE CONTRACT NO. 7549

W.S. 62
 6 SHEETS, 12 PAGES
 SCALE: VERT. 1" = 8' HORIZ. 1" = 40'
 FEBRUARY, 1966
 PREPARED IN THE OFFICES OF
 VOORHEIS - TRINDLE CO.
 BY: *R.P. Nelson*
 REG. C. E. NO. 8781
 FOR LEGEND SEE PLAN NO. S-1

GRADES TO WHICH THIS IMPROVEMENT IS TO BE CONSTRUCTED ARE SHOWN ON PLANS AND PROFILES. GRADE POINTS FOR TOP OF CURBS, CENTER LINE OF STREETS, OR CENTER LINE OF ALLEYS ARE SHOWN BY CIRCLES ON PROFILES AT ALL POINTS BETWEEN DESIGNATED POINTS THE GRADE SHALL BE ESTABLISHED SO AS TO CONFORM TO A STRAIGHT LINE DRAWN BETWEEN SAID DESIGNATED POINTS. ELEVATIONS ARE IN FEET ABOVE U.S.C. & G.S. SEA LEVEL DATUM OF 1929.

THIS DRAWING AND THE DATA HEREON ARE HEREBY MADE A PART OF THE SPECIFICATIONS FOR THE SEWER LINE. THE CONTRACTOR SHALL BE RESPONSIBLE FOR OBTAINING ALL NECESSARY PERMITS AND FOR THE COST OF CONSTRUCTION INSPECTION AND RECORD PLANS.

APPROVAL OF THIS DRAWING BY THE COUNTY OF LOS ANGELES DOES NOT CONSTITUTE A REPRESENTATION AS TO THE ACCURACY OF THE LOCATION OF OR THE EXISTENCE OR NON-EXISTENCE OF ANY UNDERGROUND UTILITY PIPE, OR STRUCTURE WITHIN THE LIMITS OF THIS PROJECT. THIS NOTE APPLIES TO ALL PAGES.

IF WORK IS TO BE DONE IN A STATE HIGHWAY, A PERMIT MUST BE OBTAINED FROM THE STATE OF CALIFORNIA, DIVISION OF HIGHWAYS, 126 SOUTH SPRING STREET, LOS ANGELES, CALIFORNIA.

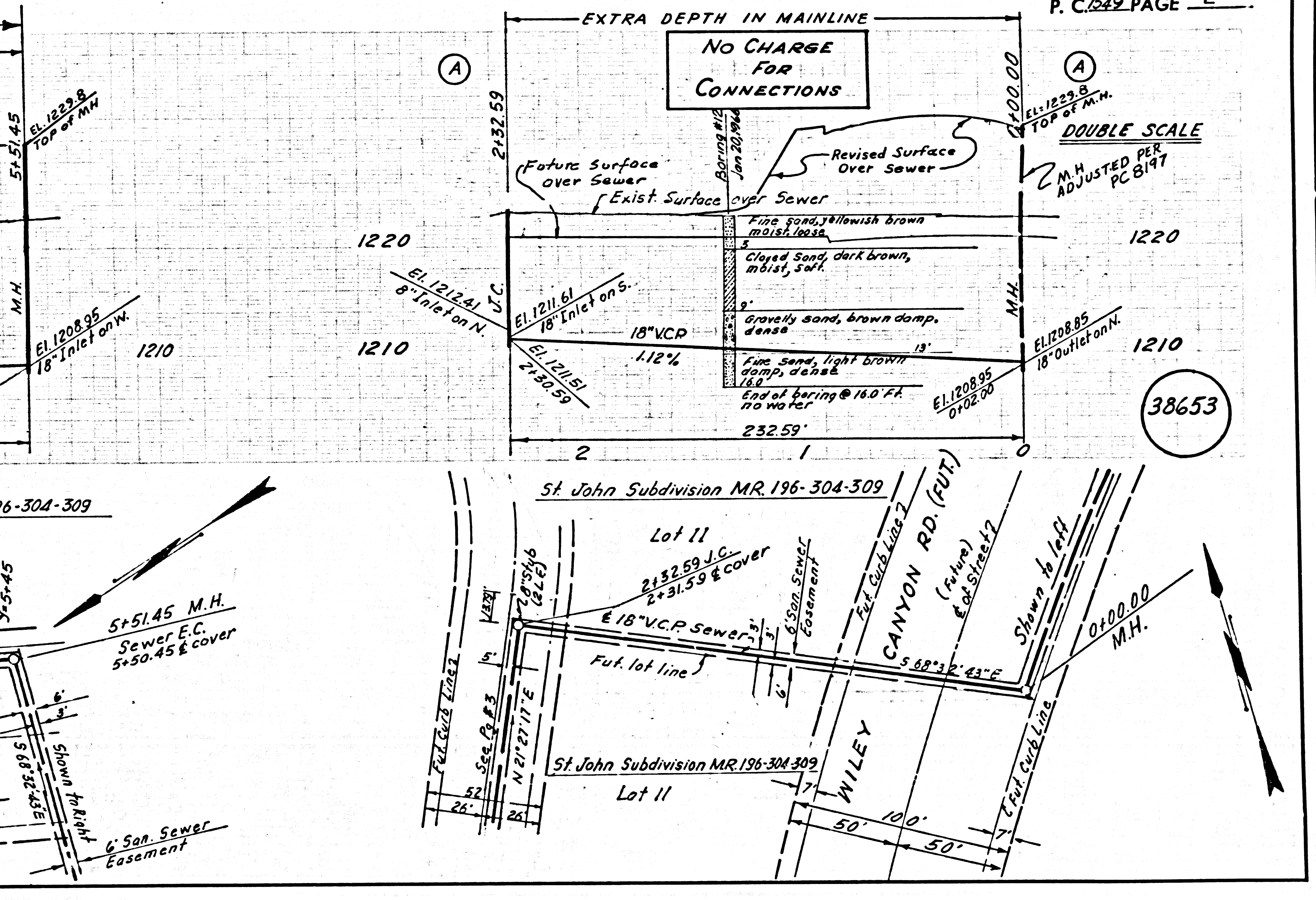
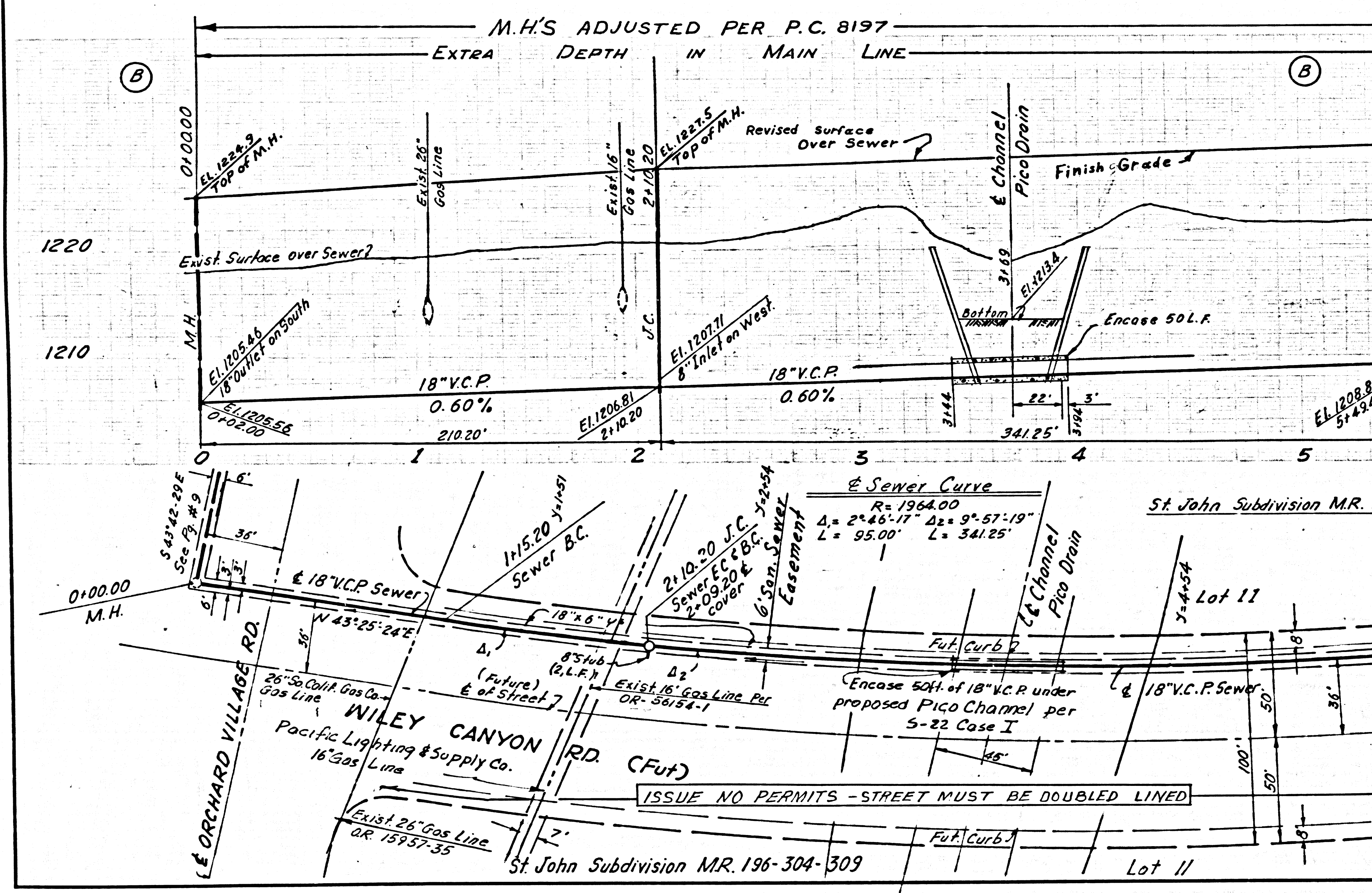
COUNTY OF LOS ANGELES, CALIFORNIA
 JOHN A. LAMBIE, COUNTY ENGINEER I. D. PARKHURST, CHIEF ENGINEER
 APPROVED BY: *R. E. Keen* ASSISTANT SANITATION ENGINEER APPROVED BY: *I. D. Parkhurst* CHIEF ENGINEER
 CHECKED BY: *Ralph J. Chappin* 5/19/66 REG. C. E. NO. 13726

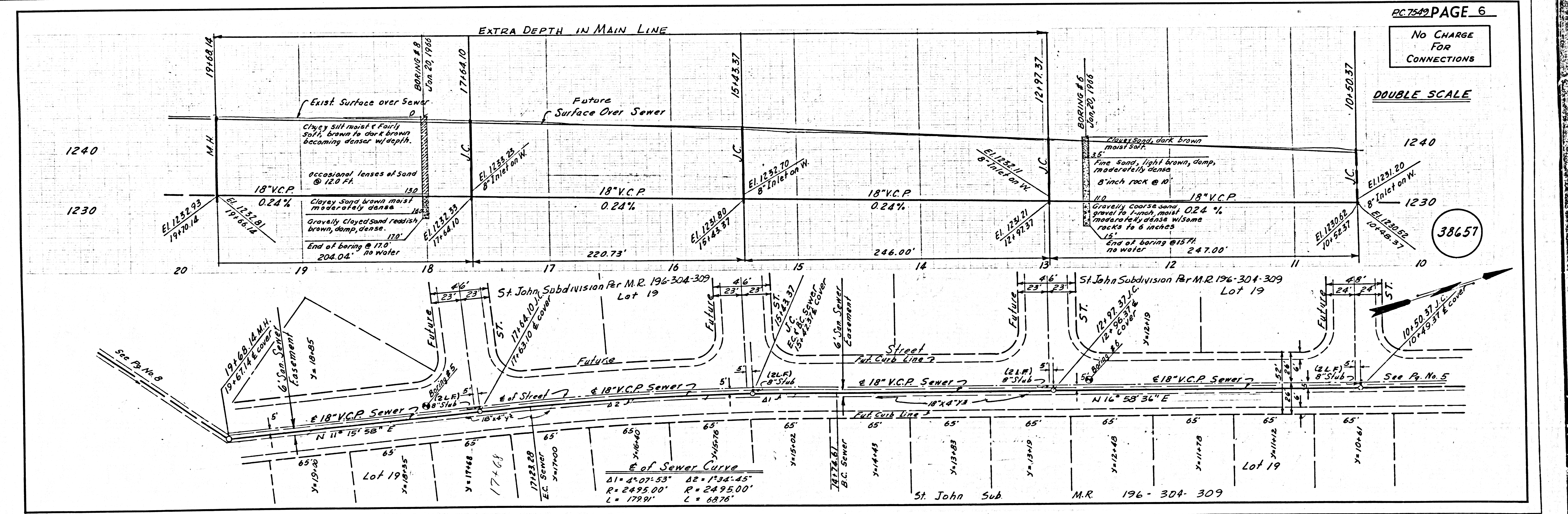
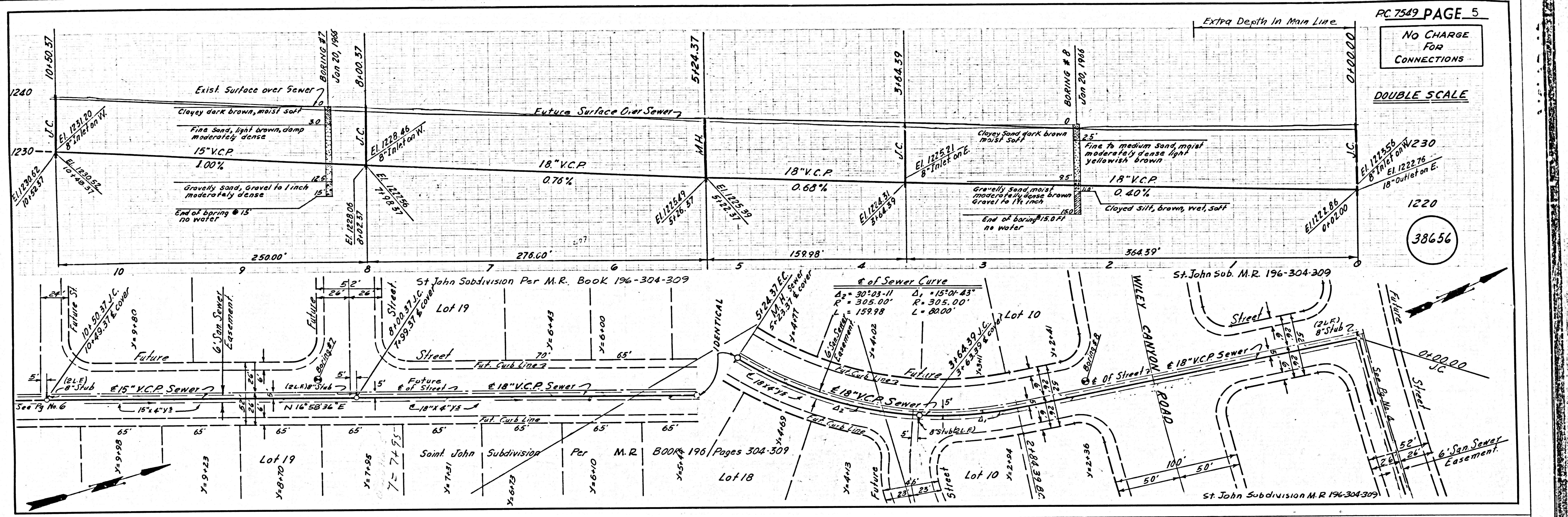
COLLECT CHARGES
 AS INDICATED
Ralph J. Chappin

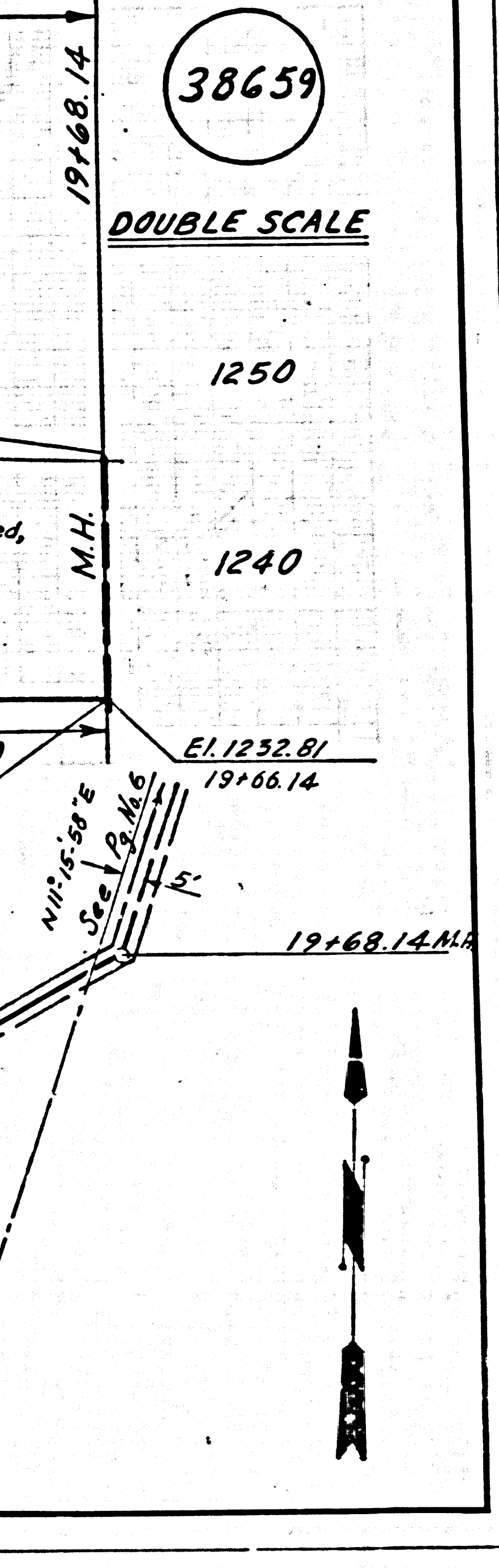
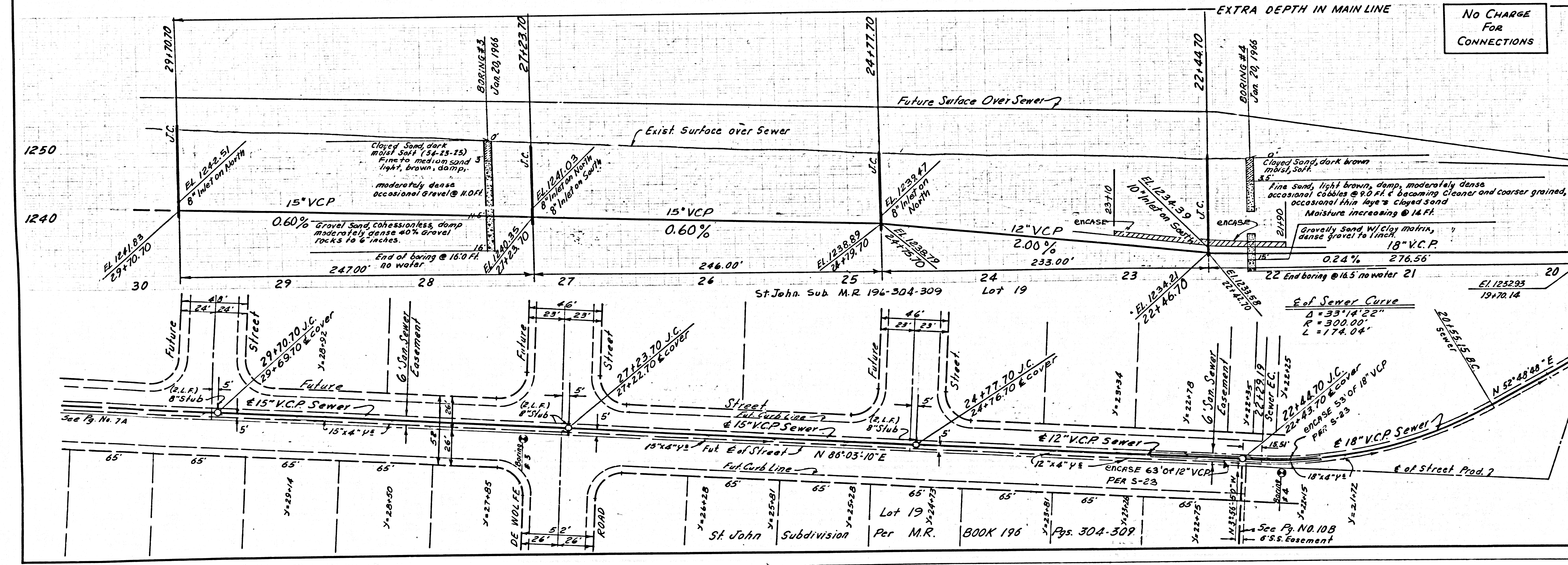
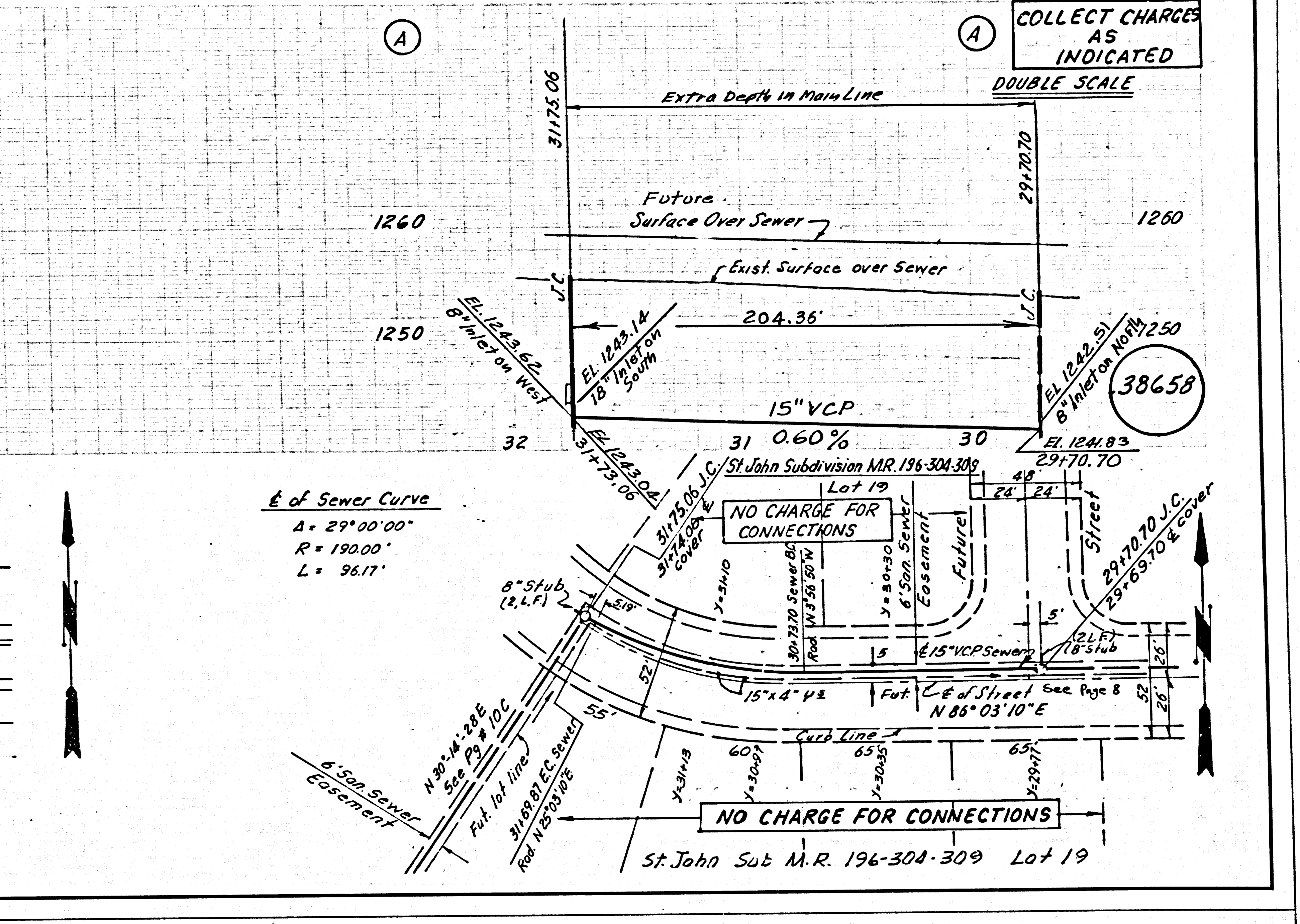
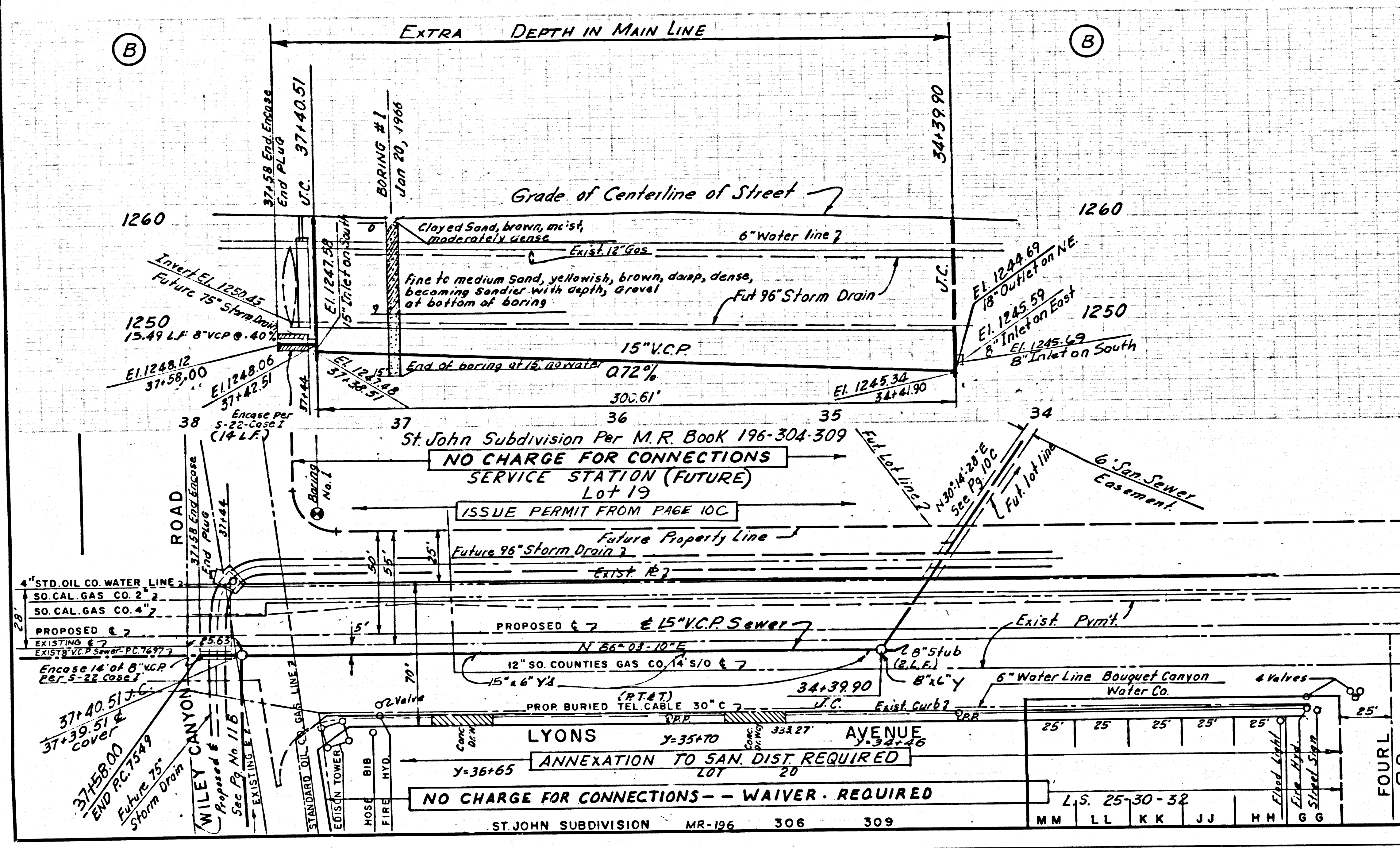
BEFORE BREAKING INTO ANY EXISTING STRUCTURE AND BEFORE FINAL ACCEPTANCE OF THIS WORK, COUNTY SANITATION DISTRICT (DU 4-1281) SHALL BE NOTIFIED IN ORDER THAT REQUIRED INSPECTION CAN BE MADE.

NO CONNECTIONS FOR THE DISPOSAL OF INDUSTRIAL WASTES SHALL BE MADE TO SEWERS SHOWN ON THESE DRAWINGS WITHOUT WRITTEN PERMISSION FROM THE CHIEF ENGINEER AND GENERAL MANAGER OF THE COUNTY SANITATION DISTRICTS.

J. N. 0366.91



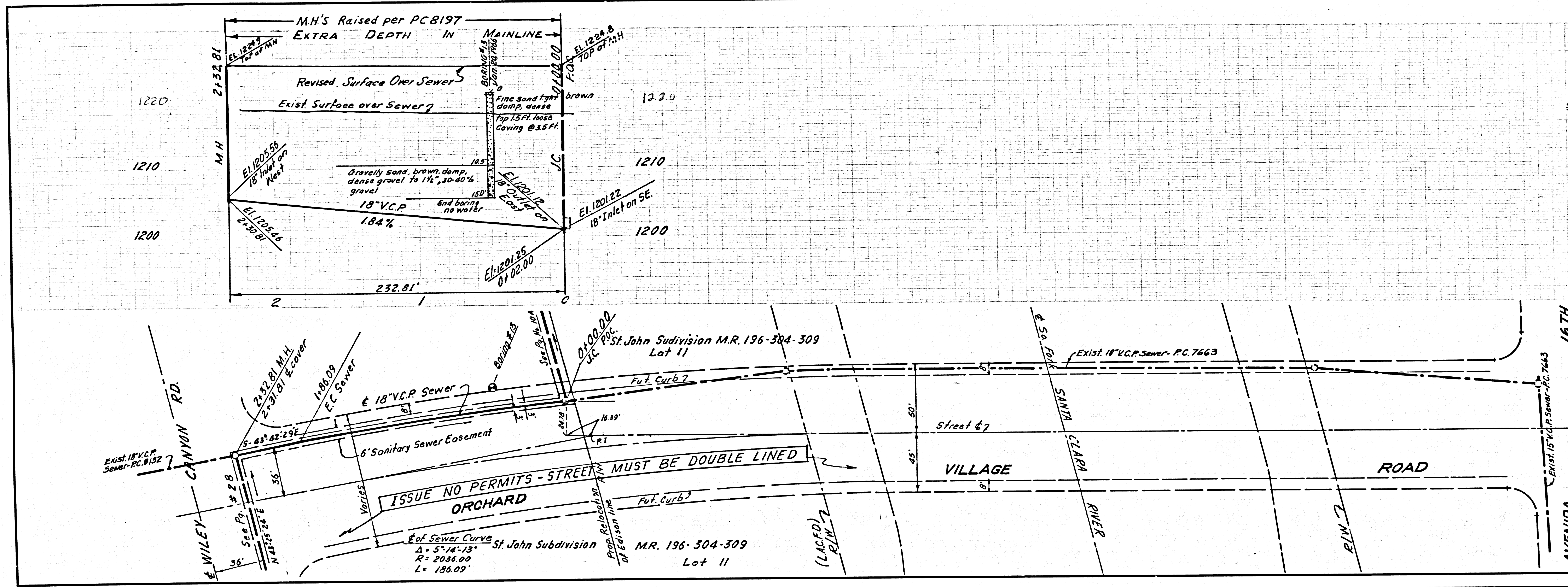




NO CHARGE FOR CONNECTIONS

DOUBLE SCALE

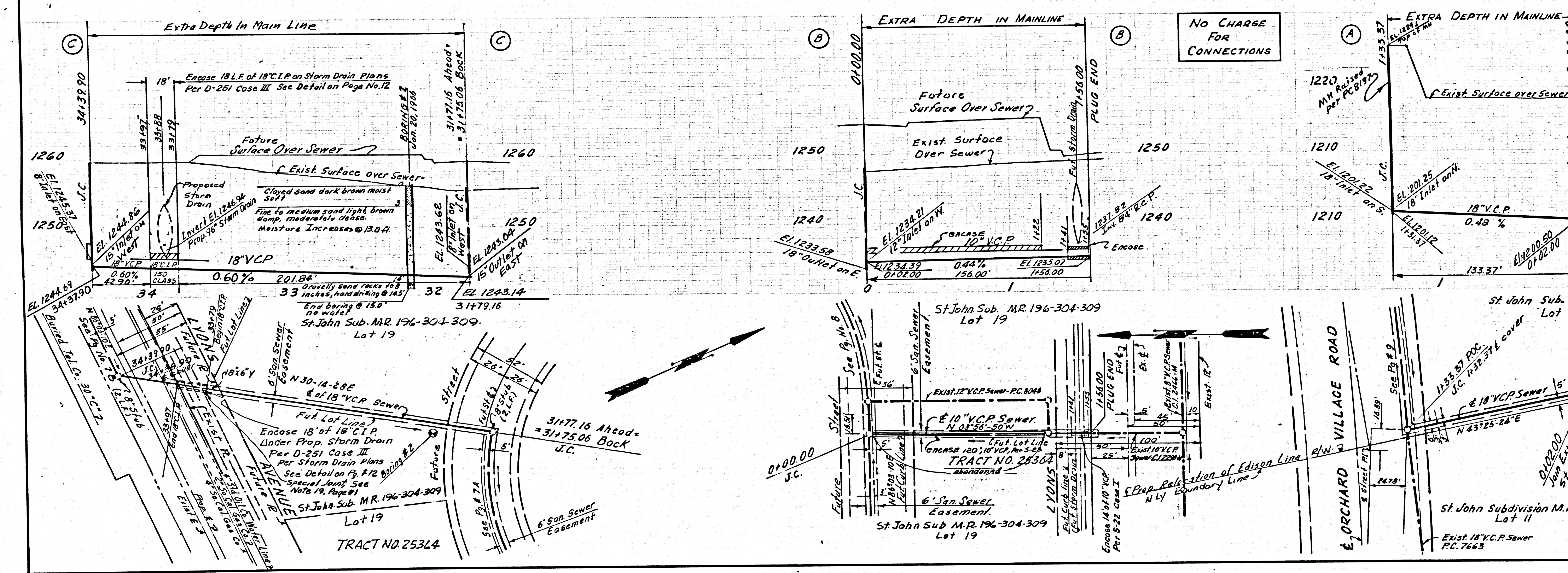
38660



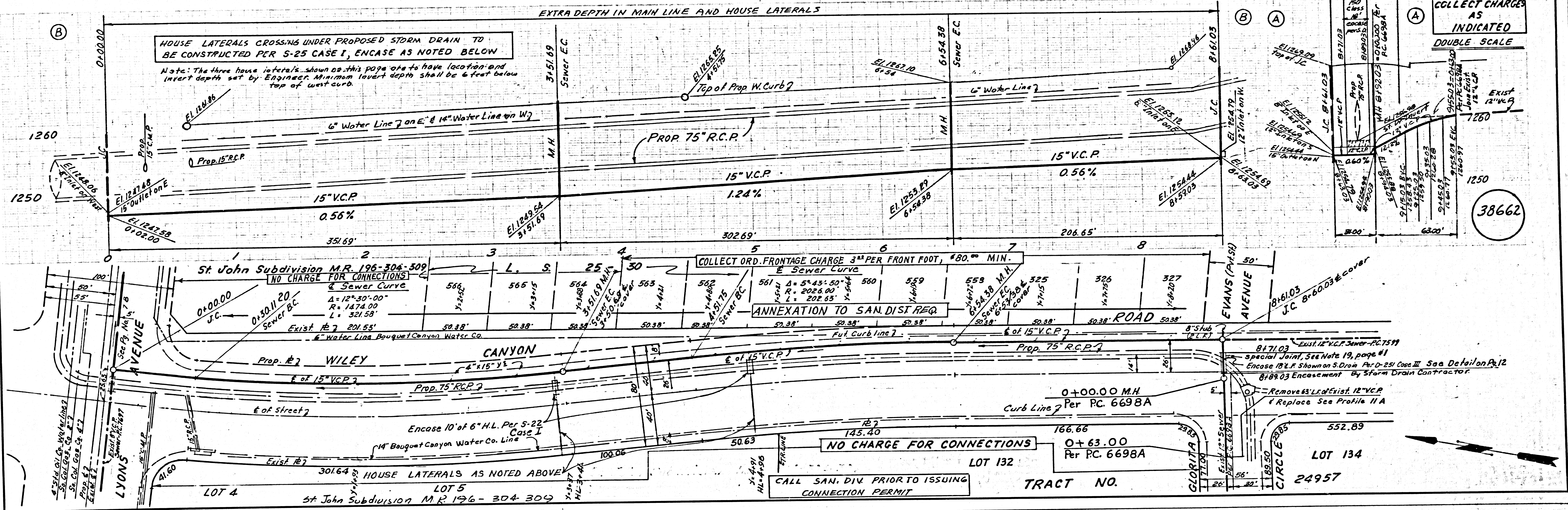
NO CHARGE FOR CONNECTIONS

DOUBLE SCALE

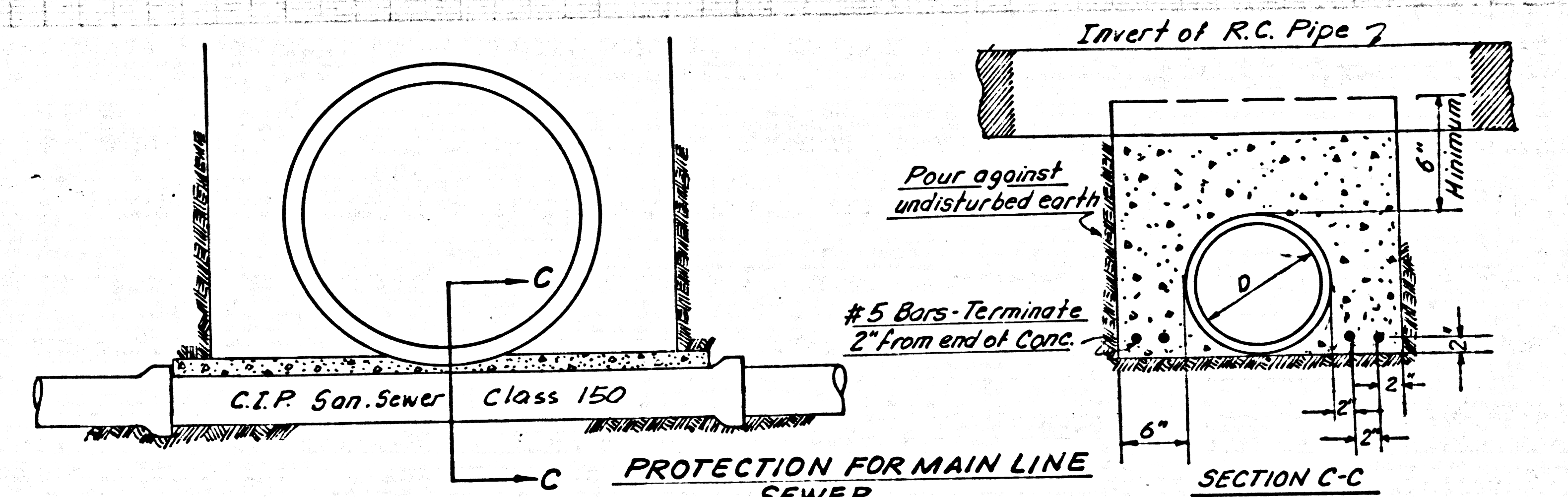
38661



COLLECT CHARGES AS INDICATED
DOUBLE SCALE



38662



PROTECTION FOR MAIN LINE SEWER
SECTION C-C
No Scale
CASE III Per No 2-D251
Where Clearance between bottom of R.C. Pipe Storm Drain and Top of Sanitary Sewer is less than 6\"/>