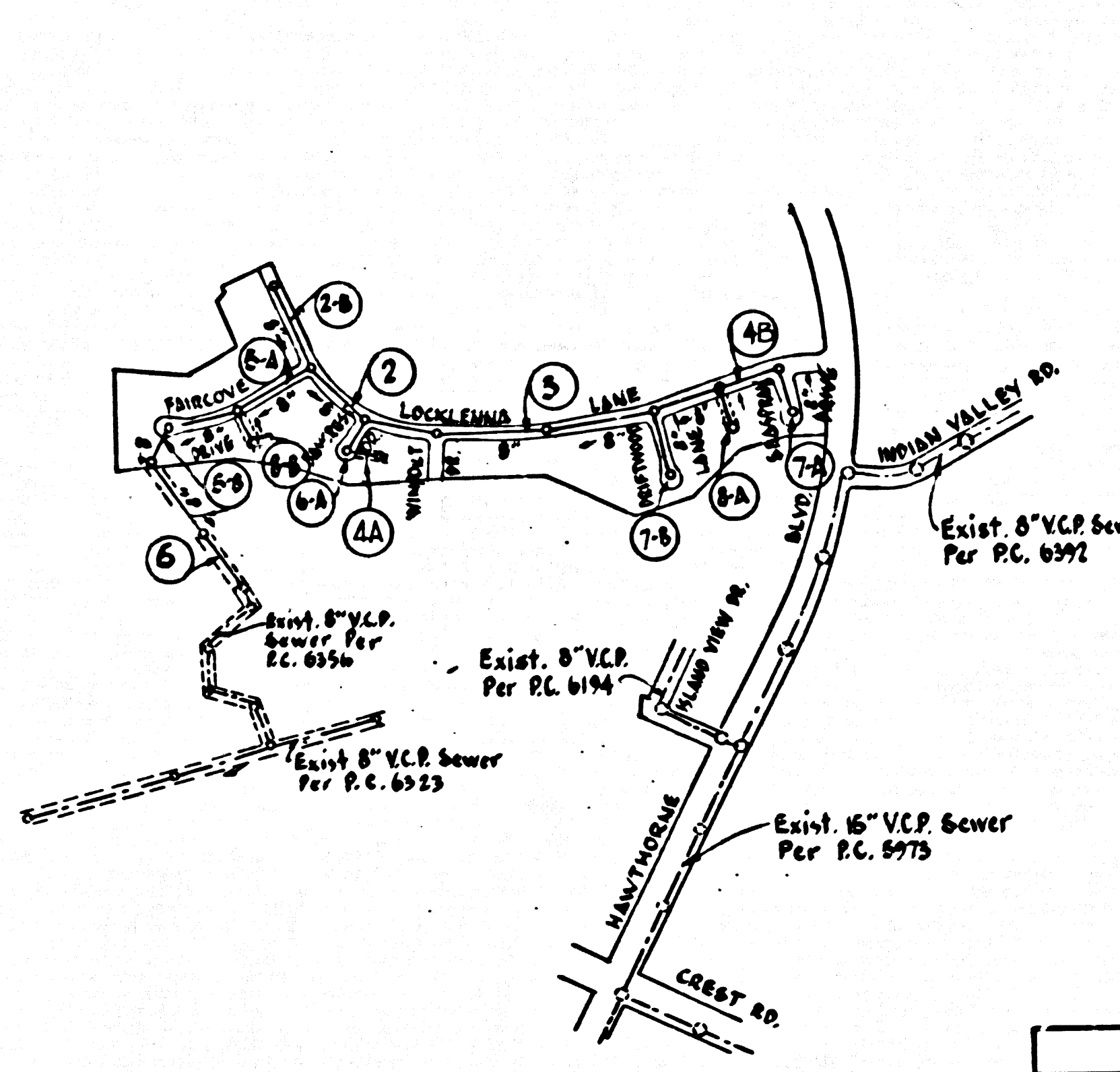


B.M. 6Y-4587-A ELEV. 990.099  
 2DBM TAG E. CB. @ CATCH BASIN 40'S E.  
 C/L MANWORTH RD. & 0.42 M.N. CREST  
 ROAD.  
 PALOS VERDES QUAD. 1960



INDEX MAP  
 TRACT NO. 25511  
 Scale: 1"=100'  
 P.C. 7551

REVISIONS  
 MOVED H.L.'S AROUND CORNER TO SERVE LOTS 10 & 17 - PAGE 7-B  
 ADDED H.L. @ STA. 10+15 TO SERVE SCHOOL SITE.  
 LOWERED SEWER LINE ON PAGES 2-A, 2-B, 4-A, 5-A, 5-B, 6-A, 6-B AND 8-B.  
 REVISED BY: *Clark M. Leonard* R.C.E. 1967  
 APPROVED BY: *John H. Michener*

NOTICE TO CONTRACTOR  
 The existence and location of any underground utility pipes or structures shown on these plans are obtained by a search of the available records. To the best of my knowledge there are no existing utilities except as shown on these plans.  
 The contractor is required to take due precautionary measures to protect the utility lines shown and any other lines not of or for the project.  
*Clark M. Leonard*  
 CLARK M. LEONARD R.C.E. 1967

DOUBLE SCALE  
 LOMITA BLDG. DIST. NO. 12

PROFILE, ALIGNMENT AND GRADE OF  
 SANITARY SEWERS PAGE 1

TRACT NO. 25511

PRIVATE CONTRACT NO. 7551

W.S. 27  
 4 SHEETS, 8 PAGES

SCALE: VERT. 1"=8'  
 HORIZ. 1"=40'

PREPARED IN THE OFFICES OF  
 LANCO ENGINEERING

by *Clark M. Leonard* (37655)  
 REG. C. E. NO. 13167

FOR LEGEND SEE PLAN NO. S-1

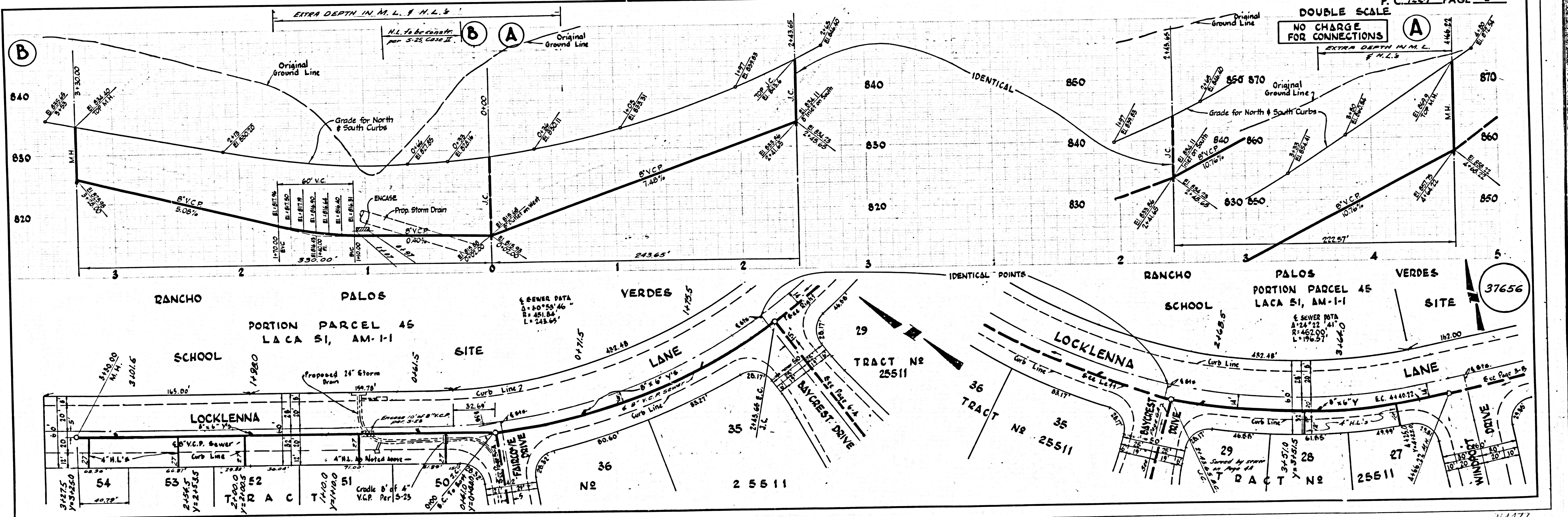
- NOTE:  
 1. PROVIDE STAKES ON THE PROPERTY LINE OR PROPERTY LINES PRODUCED AT RIGHT ANGLES TO THE SEWER LINE AT THE CENTER LINE OF EACH MANHOLE.  
 2. NO REPRESENTATIVE OF THE COUNTY ENGINEER WILL SURVEY OR LAY OUT ANY PORTION OF THE WORK.  
 3. THE PRIVATE ENGINEER SHALL FURNISH THE COUNTY ENGINEER WITH GRADE SHEETS AND STATIONING FOR ALL HOUSE LATERALS AND "T" BRANCHES AND SHALL PROVIDE STAKES FOR THEM AT THEIR PROPER LOCATIONS WITH STATIONING PLAINLY MARKED. ALL HOUSE LATERALS SHALL BE CONSTRUCTED IN A STRAIGHT ALIGNMENT AT RIGHT ANGLES FROM THE MAIN LINE SEWER EXCEPT AS SHOWN ON THE PLANS. HOUSE LATERALS FROM CHIMNEYS SHALL NOT HAVE AN ANGLE OF LESS THAN 45° WITH THE MAIN LINE SEWER. ANY CHANGE IN ALIGNMENT SHALL BE REQUESTED IN WRITING BY THE PRIVATE ENGINEER.  
 4. THE PRIVATE ENGINEER SHALL FURNISH THE HOUSE LATERAL DEPTH AT THE PROPERTY LINE BELOW THE TOP OF CURB ELEVATION FOR EACH HOUSE LATERAL ON THE GRADE SHEET.  
 5. NO REVISIONS SHALL BE MADE IN THESE PLANS WITHOUT THE APPROVAL OF THE COUNTY ENGINEER.  
 6. THE CONTRACTOR SHALL NOTIFY THE CONSTRUCTION DIVISION BY TELEPHONE, MADISON 9-4747, EXT. 81331, AT LEAST TWENTY-FOUR HOURS BEFORE STARTING ANY WORK UNDER THIS CONTRACT.  
 7. MANHOLES SHALL BE BRICK SEWER STRUCTURES PER S-3. PRECAST CONCRETE MANHOLES PER S-3 OR S-4 MAY BE USED AS AN ALTERNATE IN LOCATIONS APPROVED BY THE COUNTY ENGINEER.  
 8. USE STANDARD MANHOLE FRAMES AND COVERS, S-15, EXCEPT AS NOTED.  
 9. MANHOLE TOPS IN UNIMPROVED RIGHTS-OF-WAY TO BE SIX INCHES ABOVE FINISHED GRADE.  
 10. USE EXTRA STRENGTH PIPE. ALL PIPE IS STANDARD DEPTH EXCEPT AS NOTED.  
 11. USE MECHANICAL COMPRESSION JOINTS FOR ALL V.C.P. JOINTS PER SPEC. SECS. 36, 48 & 49.  
 12. IF A POWER POLE IS WITHIN THREE FEET OF THE SEWER, THE SEWER SHALL BE ENCASED, PER S-23, TWO FEET ON EACH SIDE FROM THE POINT OF INTERFERENCE.  
 13. IF DURING THE COURSE OF CONSTRUCTION IT IS DETERMINED THAT THERE IS LESS THAN FOUR FEET OF COVER OVER THE TOP OF A MAIN LINE OR HOUSE LATERAL V.C.P. SEWER WHICH IS NOT INDICATED ON THE PLANS, THE PIPE SHALL BE ENCASED PER S-23, UNLESS OTHERWISE APPROVED BY THE COUNTY ENGINEER.  
 14. HOUSE LATERALS TO BE CONSTRUCTED WITH INVERTS AT PROPERTY LINE 4 FEET BELOW CURB GRADE EXCEPT AS NOTED.  
 15. REINFORCE ALL TRENCHES WITHIN PAVED AREAS TO MEET L.A. COUNTY ROAD DEPT. OR CALIFORNIA STATE HIGHWAY REQUIREMENTS IN ACCORDANCE WITH PERMITS.  
 16. FOR ALLOWABLE LEAKAGE TEST USE FORMULA NO. 2, SPEC. S, SEC. 54.  
 17. ALL STATE AND LOCAL TRENCH SAFETY ORDERS WILL BE STRICTLY ENFORCED.  
 18. CONSTRUCTION IN FILLED AREAS  
 (a) AN ACCEPTABLE CERTIFICATION OF COMPACTION TESTS RESULTS SHALL BE SUBMITTED TO THE CONSTRUCTION DIVISION. COMPACTION TESTS ARE TO BE MADE IN ACCORDANCE WITH A.S.T.M. STANDARD METHOD OF TEST P-998-42T.  
 (b) NO CONSTRUCTION IS PERMITTED IN FILLED AREAS WHERE THE RELATIVE DENSITY OF COMPACTION IS LESS THAN 90%.  
 (c) IF THE RELATIVE DENSITY OF COMPACTION IS LESS THAN 90%, ALL MAIN LINE & HOUSE LATERALS SHALL BE GRADED PER S-25 OR HAVE A SPECIAL SAGS CHARGE PER S-21, CASE 2E. SPECIAL MANHOLE SAGS PER S-21 ARE REQUIRED.  
 (d) IF THE RELATIVE DENSITY OF COMPACTION IS 90% OR GREATER, THE SPECIAL PROVISIONS IN (C) ARE NOT REQUIRED.  
 19. WHERE STATION APPEARS AT END OF HOUSE LATERALS, SUCH HOUSE LATERAL SHALL NOT BE CONSTRUCTED BEYOND THAT STATION.

COLLECT CHARGES AS INDICATED  
*John H. Michener* 5-27-66

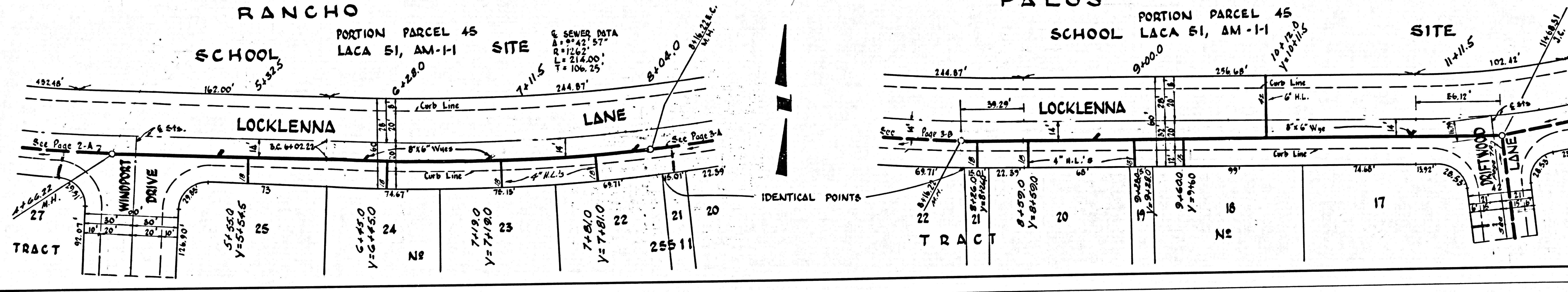
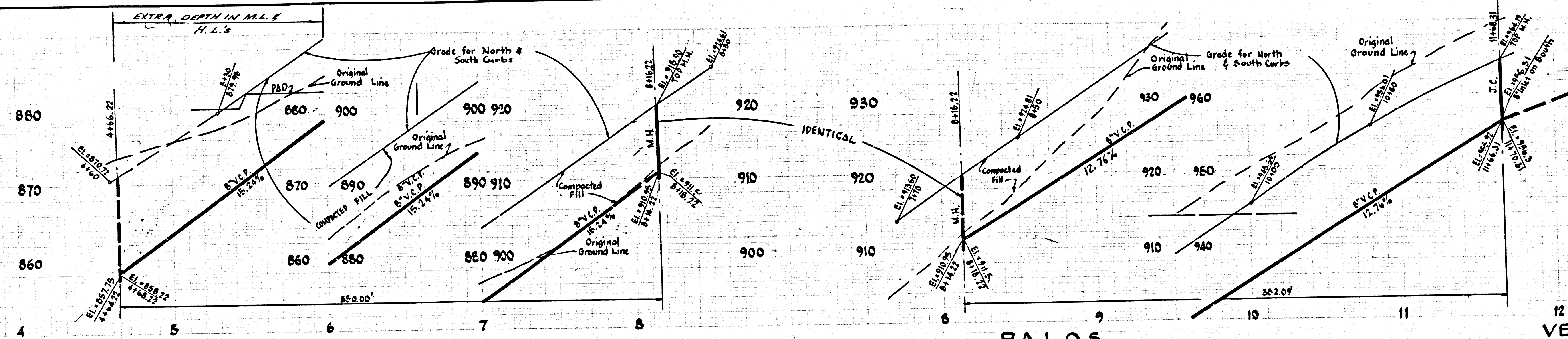
NO CONNECTIONS FOR THE DISPOSAL OF INDUSTRIAL WASTES SHALL BE MADE TO SEWERS SHOWN ON THESE DRAWINGS WITHOUT WRITTEN PERMISSION FROM THE CHIEF ENGINEER AND GENERAL MANAGER OF THE COUNTY SANITATION DISTRICTS.

NOTE:  
 GRADES TO WHICH THIS IMPROVEMENT IS TO BE CONSTRUCTED ARE SHOWN ON PLANS AND PROFILES. GRADE POINTS FOR TOP OF CURBS, CENTER LINE OF STREETS, OR CENTER LINE OF ALLEYS ARE SHOWN BY CIRCLES ON PROFILES. AT ALL POINTS BETWEEN DESIGNATED POINTS THE GRADE SHALL BE ESTABLISHED SO AS TO CONFORM TO A STRAIGHT LINE DRAWN BETWEEN SAID DESIGNATED POINTS.  
 ELEVATIONS ARE IN FEET ABOVE U.S.C. & G.S. SEA LEVEL DATUM OF 1929.  
 THIS DRAWING AND THE DATA HEREON ARE NECESSARY MADE A PART OF THE SPECIFICATIONS. (See memo 5-27-66)  
 APPROVAL OF THIS PLAN BY THE COUNTY OF LOS ANGELES DOES NOT CONSTITUTE A REPRESENTATION AS TO THE ACCURACY OF THE LOCATION OR OF THE EXISTENCE OR NON-EXISTENCE OF ANY UNDERGROUND UTILITY PIPE, OR STRUCTURE WITHIN THE LIMITS OF THE PROJECT. THIS NOTE APPLIES TO ALL PAGES.  
 IF WORK IS TO BE DONE IN A STATE HIGHWAY, A PERMIT MUST BE OBTAINED FROM THE STATE OF CALIFORNIA, DIVISION OF HIGHWAYS, 128 SOUTH SPRING STREET, LOS ANGELES, CALIFORNIA.

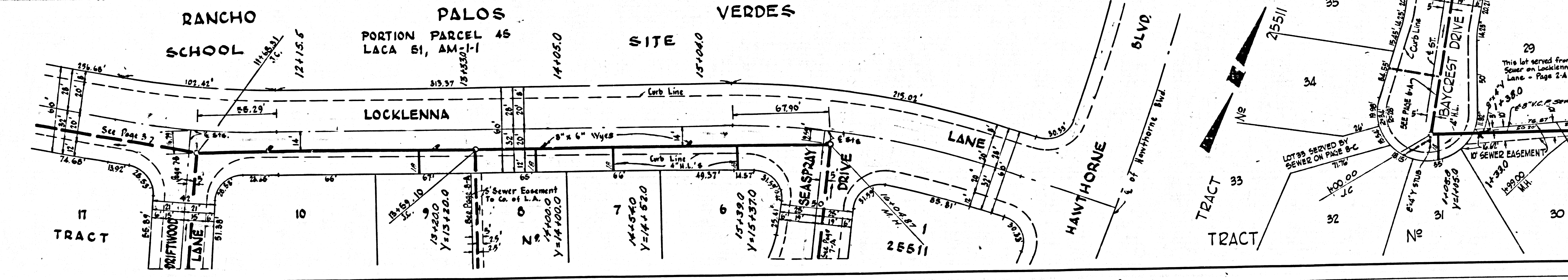
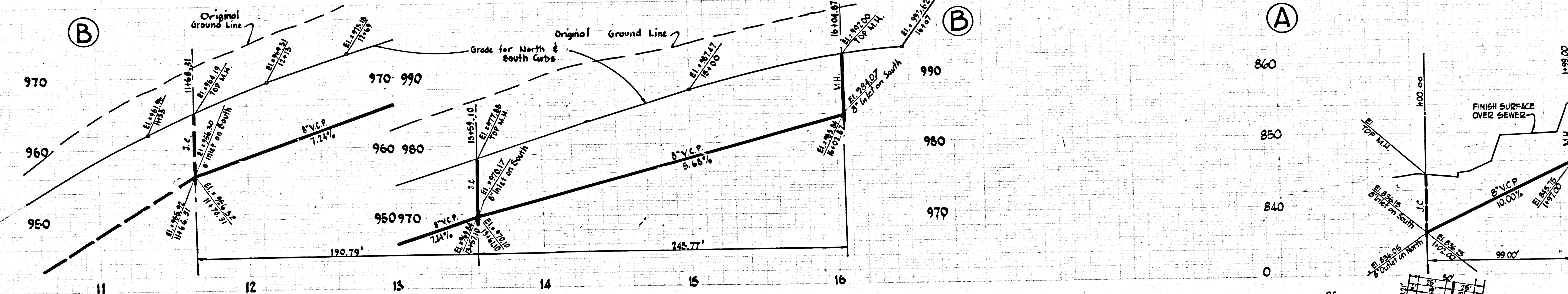
COUNTY OF LOS ANGELES, CALIFORNIA  
 JOHN A. LAMBIE, COUNTY ENGINEER  
 J. D. PARKHURST, CHIEF ENGINEER  
 CO. SAN. DIST. NO. 2  
 APPROVED BY: *Richard E. King* ASSISTANT SANITATION ENGINEER  
 APPROVED BY: *John H. Michener* OFFICE ENGINEER  
 SUBMITTED BY: *Clark M. Leonard* REGIONAL ENGINEER  
 CHECKED BY: *Edward J. Valenzuela* REG. C.E. NO. 10673  
 J.N. 0366.22



NO CHARGE FOR CONNECTION



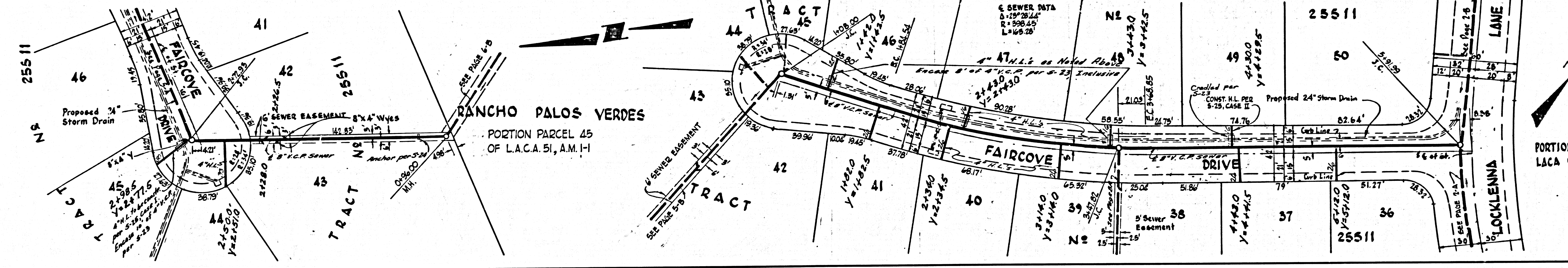
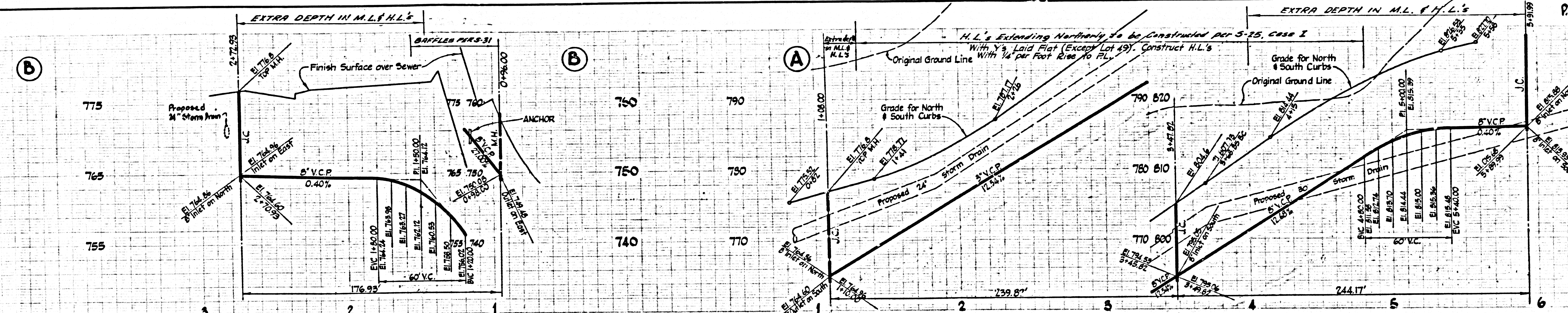
NO CHARGE FOR CONNECTION



2-748

NO CHARGE FOR CONNECTIONS

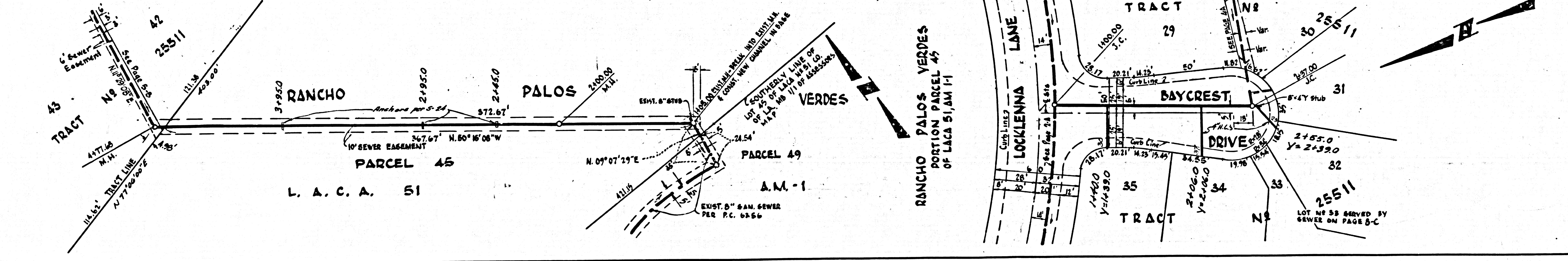
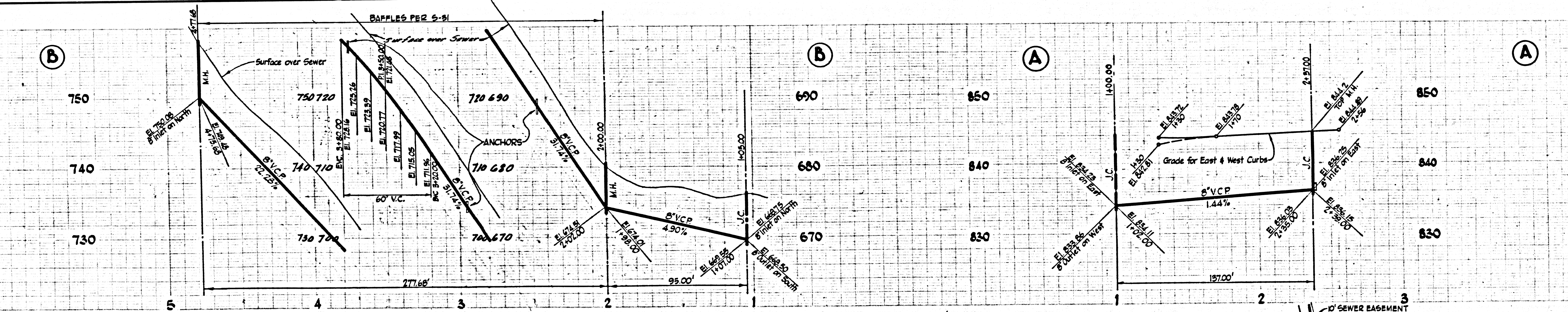
37659



RANCHO PALOS VERDES  
PORTION PARCEL 45  
L.A.C.A. 51, AM-1

NO CHARGE FOR CONNECTIONS

37660

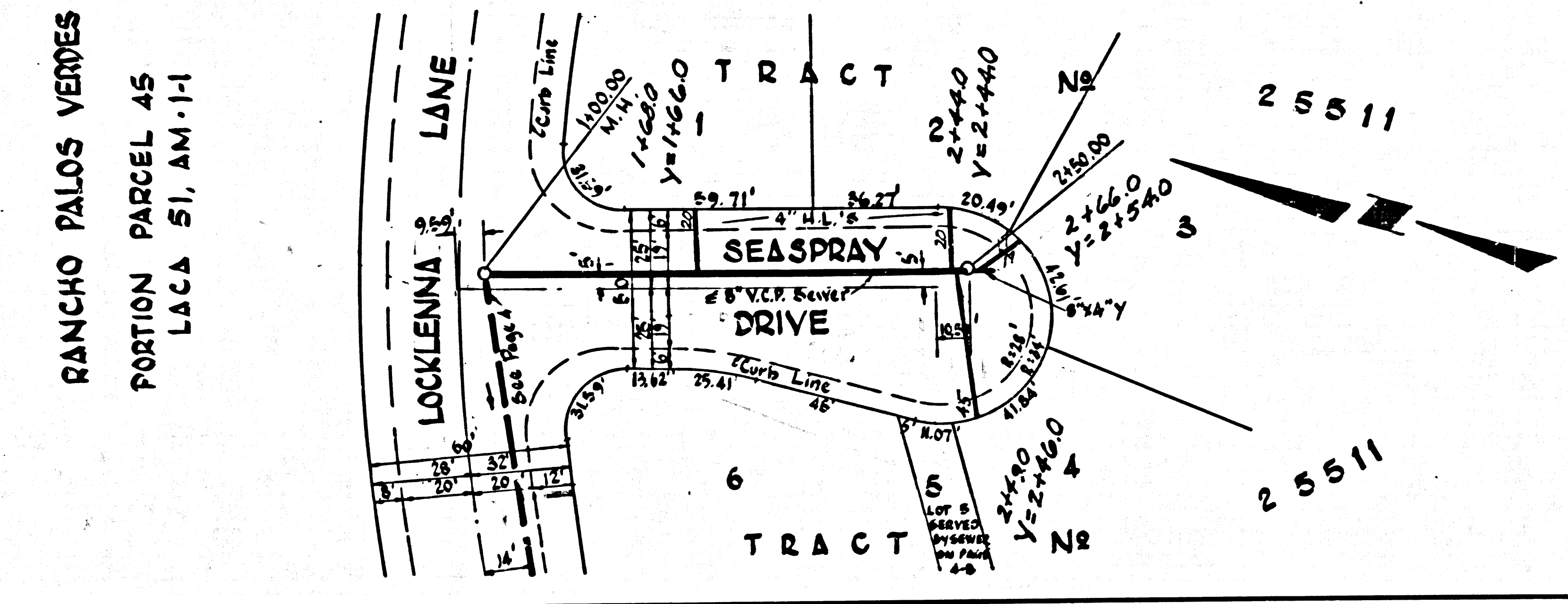
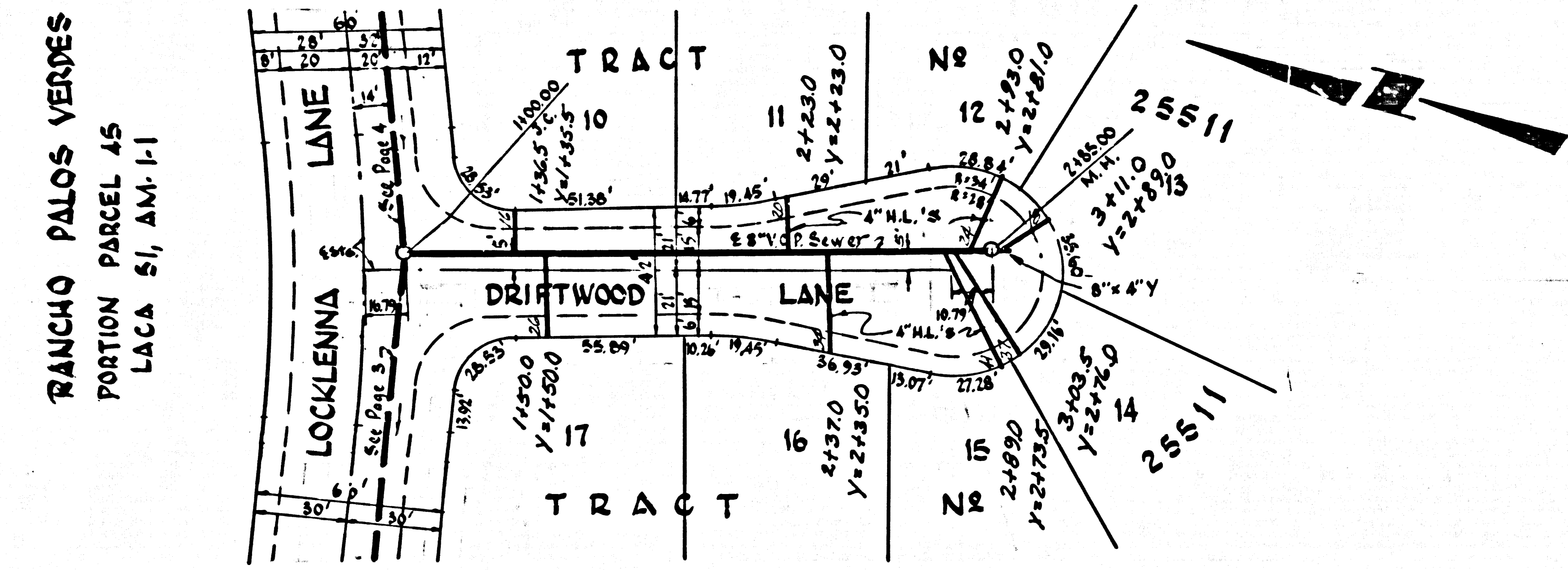
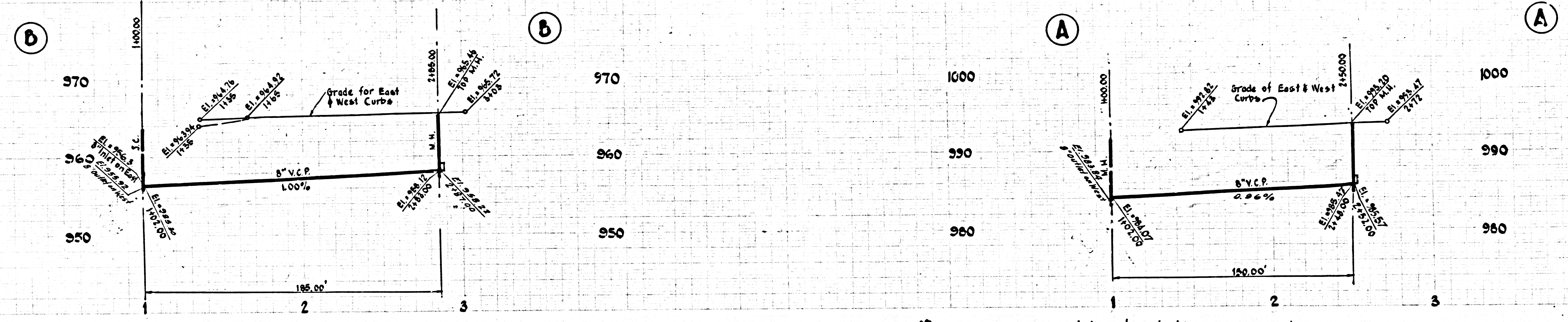


RANCHO PALOS VERDES  
PORTION PARCEL 45  
OF L.A.C.A. 51, AM-1

37659  
37660  
B-1

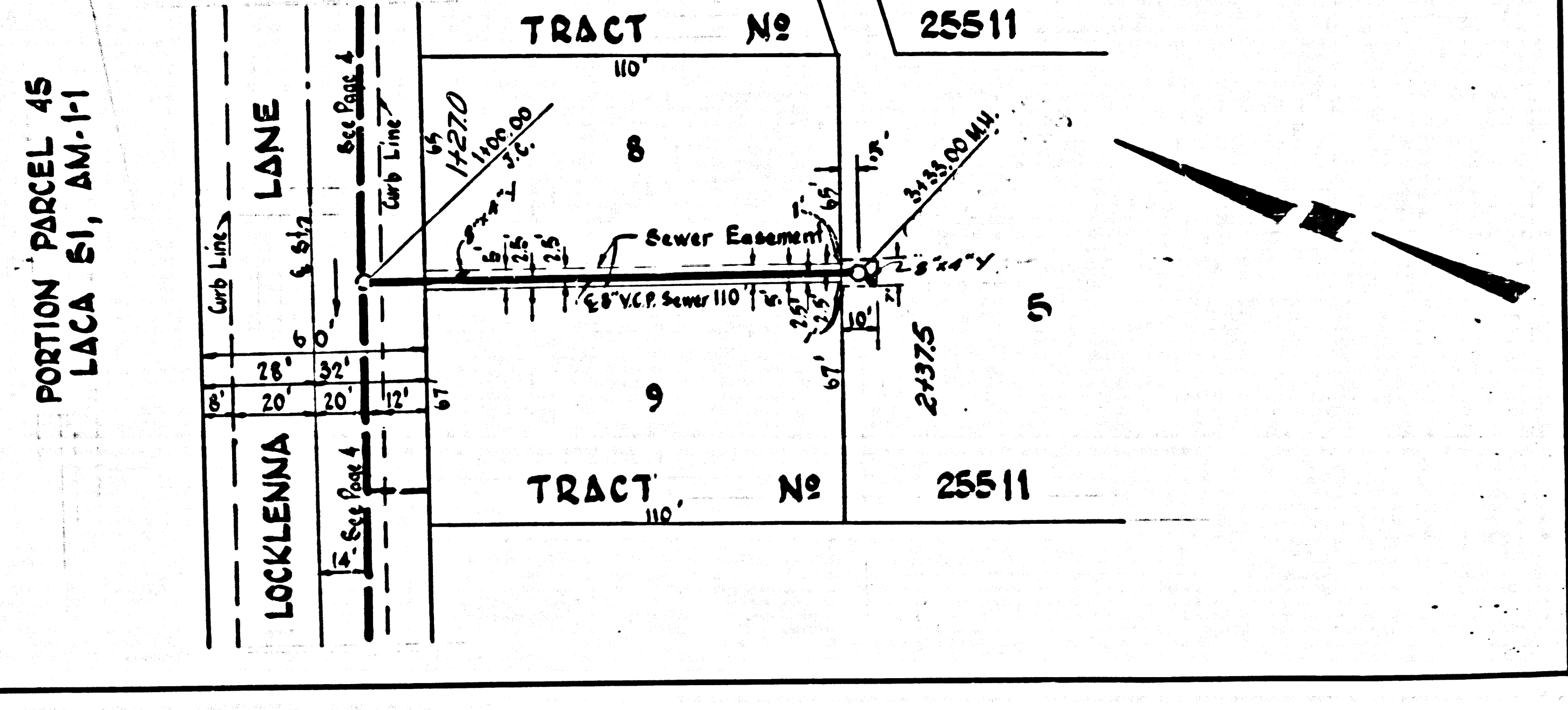
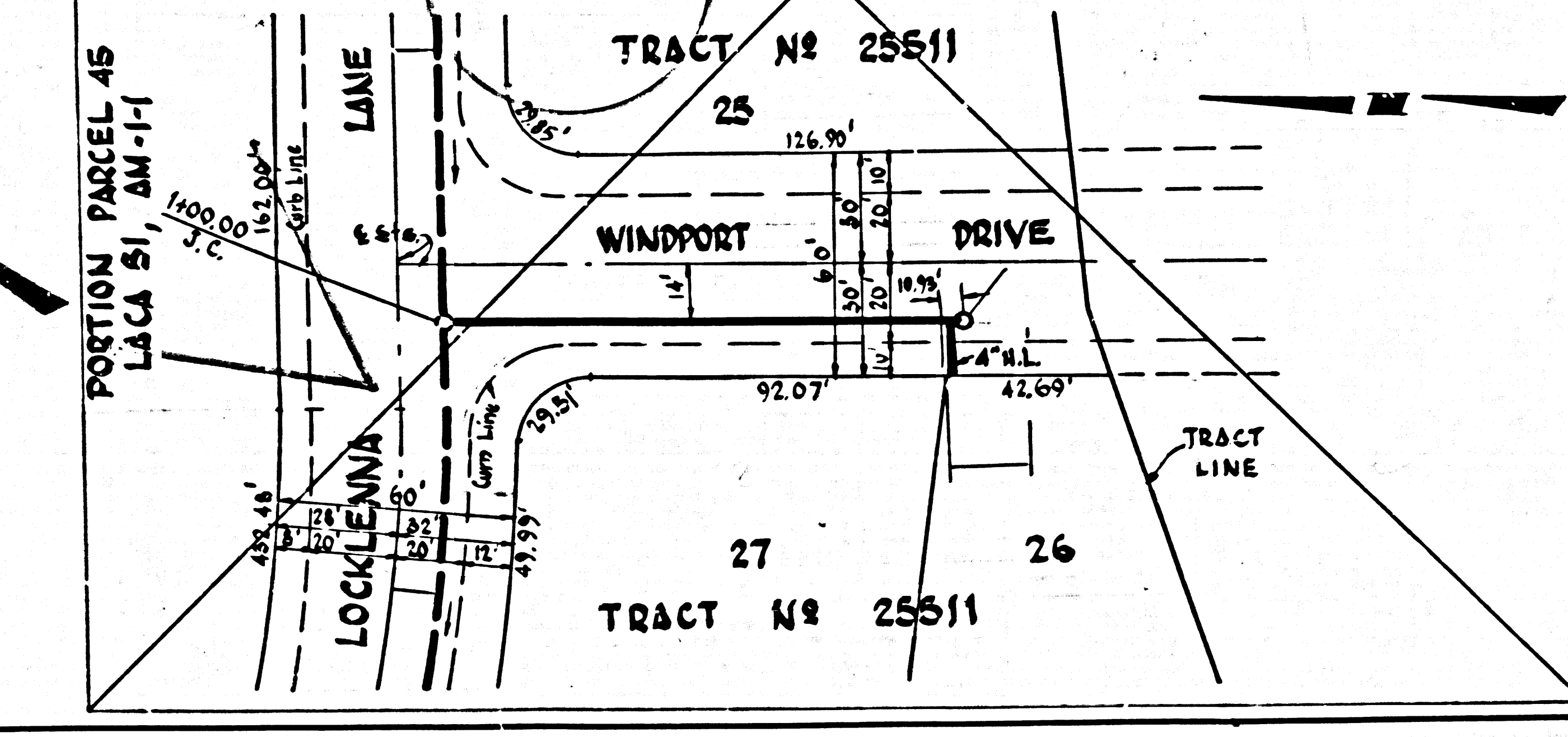
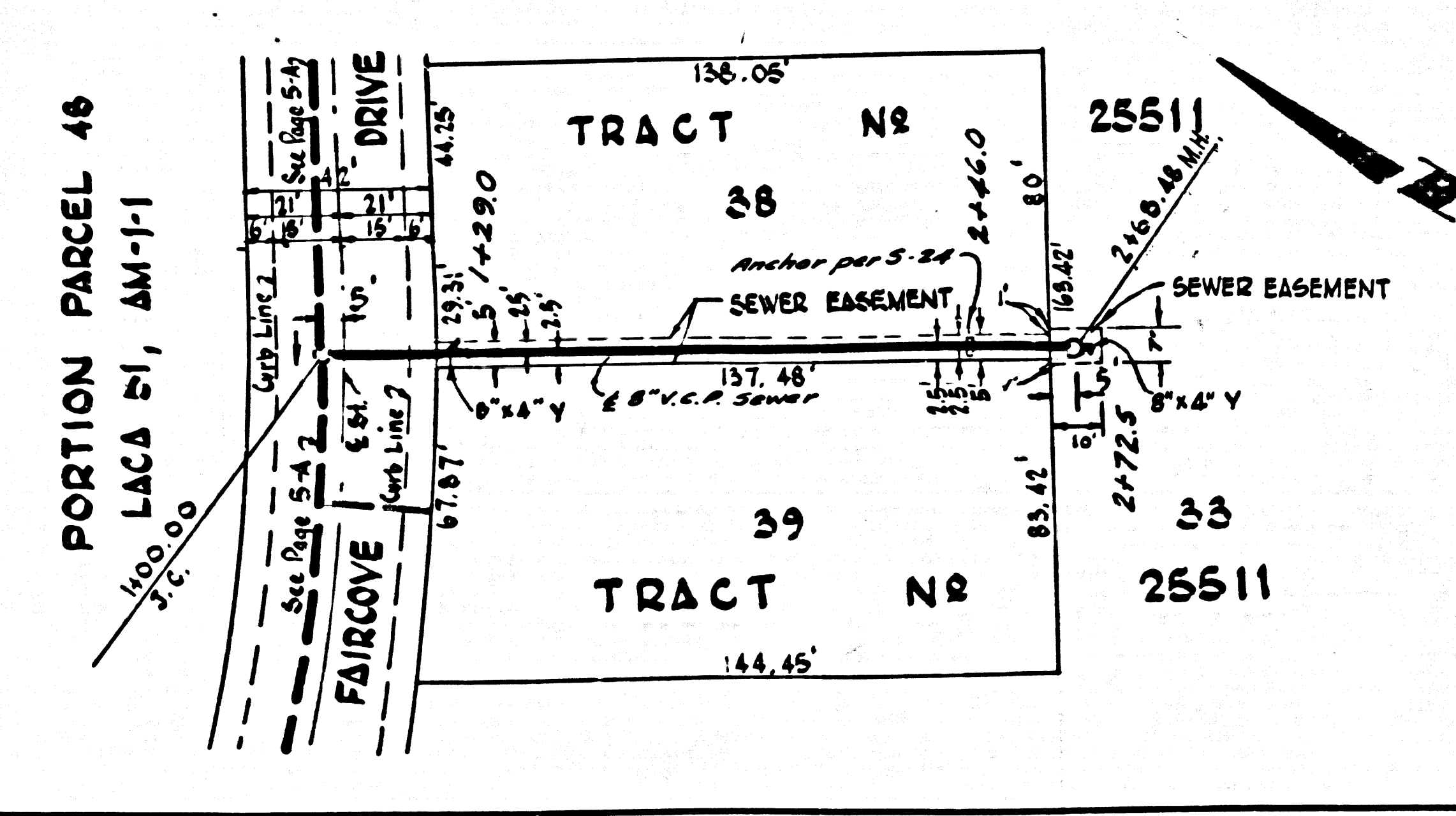
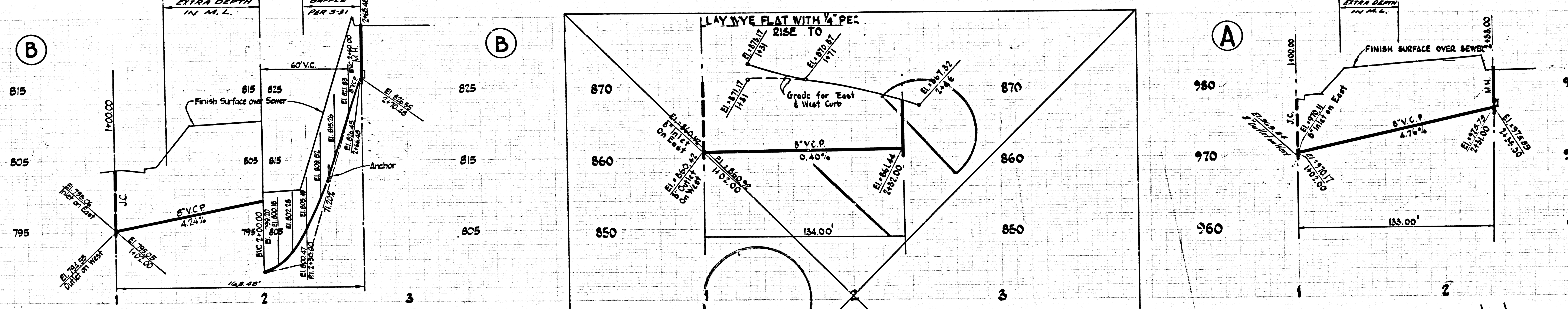
DOUBLE SCALE  
NO CHARGE  
FOR CONNECTIONS

37661



DOUBLE SCALE  
NO CHARGE  
FOR CONNECTIONS

37662



37661 B-7