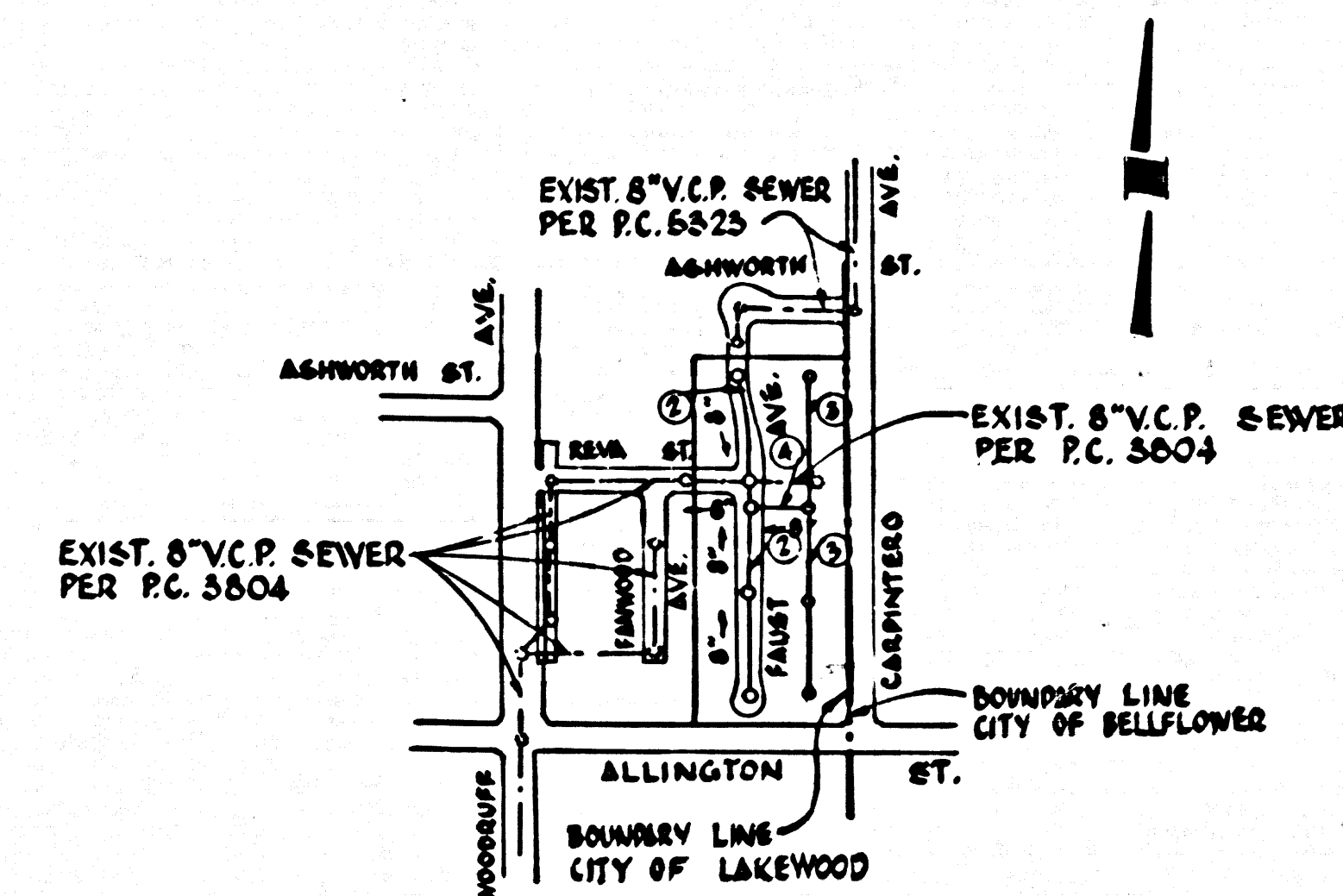


B.M. SY-5676 ELEV. 57.088  
 L. & BN. & CB ALLINGTON ST. 75'±  
 W. & WOODRUFF AVE.  
 BASELINE QUAD. 1955



INDEX MAP  
 Scale: 1"=600'

LAKWOOD BLDG. DIST. NO. 4.01

PROFILE, ALIGNMENT AND GRADE OF  
**SANITARY SEWERS** P.C. 7557  
 TO BE CONSTRUCTED IN  
 TRACT N2 25514  
 PRIVATE CONTRACT NO. 7557

W.S. 33  
 2 SHEETS, 4 PAGES  
 SCALE: VERT. 1"=4' HORIZ. 1"=40'  
 JAN., 1966  
 PREPARED IN THE OFFICES OF  
**LANCO ENGINEERING**  
 Clark M. Leonard  
 REG. C. E. NO. 12167  
 FOR LEGEND SEE PLAN NO. S-1

- NOTES:
- PROVIDE STAKES ON THE PROPERTY LINE OR PROPERTY LINES PRODUCED AT RIGHT ANGLES TO THE SEWER LINE AT THE CENTER LINE OF EACH MANHOLE.
  - NO REPRESENTATIVE OF THE CITY ENGINEER WILL SURVEY OR LAY OUT ANY PORTION OF THE WORK.
  - THE PRIVATE ENGINEER SHALL FURNISH THE CITY ENGINEER WITH GRADE SHEETS AND STATIONING FOR ALL HOUSE LATERALS AND "T" BRANCHES AND SHALL PROVIDE STAKES FOR THEM AT THEIR PROPER LOCATIONS WITH STATIONING PLAINLY MARKED. ALL HOUSE LATERALS SHALL BE CONSTRUCTED IN A STRAIGHT ALIGNMENT AT RIGHT ANGLES FROM THE MAIN LINE SEWER EXCEPT AS SHOWN ON THE PLANS. HOUSE LATERALS FROM CHIMNEYS SHALL NOT HAVE AN ANGLE OF LESS THAN 45° WITH THE MAIN LINE SEWER. ANY CHANGE IN ALIGNMENT SHALL BE REQUESTED IN WRITING BY THE PRIVATE ENGINEER.
  - THE PRIVATE ENGINEER SHALL FURNISH THE HOLES, LATERAL DEPTH AT THE PROPERTY LINE BELOW THE TOP OF CURB ELEVATION FOR EACH HOUSE LATERAL ON THE GRADE SHEET.
  - NO REVISIONS SHALL BE MADE IN THESE PLANS WITHOUT THE APPROVAL OF THE CITY ENGINEER.
  - THE CONTRACTOR SHALL NOTIFY THE CONSTRUCTION DIVISION BY TELEPHONE, MADISON 9-4742, EXT. 81531, AT LEAST TWENTY-FOUR HOURS BEFORE STARTING ANY WORK UNDER THIS CONTRACT.
  - MANHOLES SHALL BE BRICK SEWER STRUCTURES PER S-3. PRECAST CONCRETE MANHOLES PER S-3 OR S-4 MAY BE USED AS AN ALTERNATE IN LOCATIONS APPROVED BY THE CITY ENGINEER.
  - USE STANDARD MANHOLE FRAMES AND COVERS, S-1, EXCEPT AS NOTED.
  - USE EXTRA STRENGTH PIPE. ALL PIPE IS STANDARD DEPTH EXCEPT AS NOTED.
  - USE MECHANICAL COMPRESSION JOINTS FOR ALL V.C.P. JOINTS PER SPEC'S, SECS. 36, 48 & 49.
  - IF A POWER POLE IS WITHIN THREE FEET OF THE SEWER, THE SEWER SHALL BE ENCASED, PER S-23, TWO FEET ON EACH SIDE FROM THE POINT OF INTERFERENCE.
  - IF DURING THE COURSE OF CONSTRUCTION IT IS DETERMINED THAT THERE IS LESS THAN FOUR FEET OF COVER OVER THE TOP OF A MAIN LINE OR HOUSE LATERAL V.C.P. SEWER WHICH IS NOT INDICATED ON THE PLANS, THE PIPE SHALL BE ENCASED PER S-23, UNLESS OTHERWISE APPROVED BY THE CITY ENGINEER.
  - HOUSE LATERALS TO BE CONSTRUCTED WITH INVERTS AT PROPERTY LINE 5 FEET BELOW CURB GRADE EXCEPT AS NOTED.
  - RESURFACE ALL TRENCHES WITHIN PAVED AREAS TO MEET L.A. COUNTY ROAD DEPT. OR CALIFORNIA STATE HIGHWAY REQUIREMENTS IN ACCORDANCE WITH PERMITS.
  - FOR ALLOWABLE LEAKAGE TEST USE FORM RA NO. 3, SPEC'S, SEC. 54.
  - ALL STATE AND LOCAL TRENCH SAFETY ORDERS WILL BE STRICTLY ENFORCED.
  - ON ABANDONED LINES FLAG PIPE PER SPECIFICATIONS SECTION 60.
  - ALL CAST IRON PIPE SHALL BE CLASS 150 OR BETTER WITH CAULKER OVER OR APPROVED EQUAL.
  - JOINTS BETWEEN C.I.P. & V.C.P. SHALL BE CHILLED COUPLING OR APPROVED EQUAL.

NOTE:  
 GRADES TO WHICH THE IMPROVEMENT IS TO BE CONSTRUCTED ARE SHOWN ON PLANS AND PROFILES. GRADE POINTS FOR TOP OF CURBS, CENTER LINE OF STREETS, OR CENTER LINE OF ALLEYS ARE SHOWN BY CIRCLES ON PROFILES. AT ALL POINTS BETWEEN DESIGNATED POINTS THE GRADE SHALL BE ESTABLISHED SO AS TO CONFORM TO A STRAIGHT LINE DRAWN BETWEEN SAID DESIGNATED POINTS. ELEVATIONS ARE IN FEET ABOVE U.S.C. & G.S. SEA LEVEL DATUM OF 1929.  
 THIS DRAWING AND THE DATA HEREON ARE HEREBY MADE A PART OF THE SPECIFICATIONS.  
 WORK SHALL BE CONSTRUCTED ACCORDING TO STANDARD SPECIFICATIONS DATED JAN. 25, 1962, ON FILE IN THE OFFICE OF THE COUNTY ENGINEER AND SHALL BE PROSECUTED ONLY IN THE PRESENCE OF THE CITY ENGINEER.  
 BEFORE WORK CAN BE STARTED, THE CONTRACTOR MUST OBTAIN A PERMIT TO EXCAVATE IN COUNTY STREETS FROM THE L.A. COUNTY ROAD DEPT., DISTRICT OFFICE NO. 11111 AND PAY A FEE TO THE CITY ENGINEER, CITY OF LAKWOOD, 6063 CLARK ST., LAKWOOD, CALIFORNIA 90401, SUFFICIENT TO COVER THE COST OF CONSTRUCTION INSPECTION AND RECORD PLANS.  
 APPROVAL OF THIS PLAN BY THE CITY ENGINEER DOES NOT CONSTITUTE A REPRESENTATION AS TO THE ACCURACY OF THE LOCATION OF OR THE EXISTENCE OR NON-EXISTENCE OF ANY UNDERGROUND UTILITY PIPE, OR STRUCTURE WITHIN THE LIMITS OF THE PROJECT. THIS NOTE APPLIES TO ALL PAGES.  
 IF WORK IS TO BE DONE IN A STATE HIGHWAY, A PERMIT MUST BE OBTAINED FROM THE STATE OF CALIFORNIA, DIVISION OF HIGHWAYS, 126 SOUTH SPRING STREET, LOS ANGELES, CALIFORNIA.

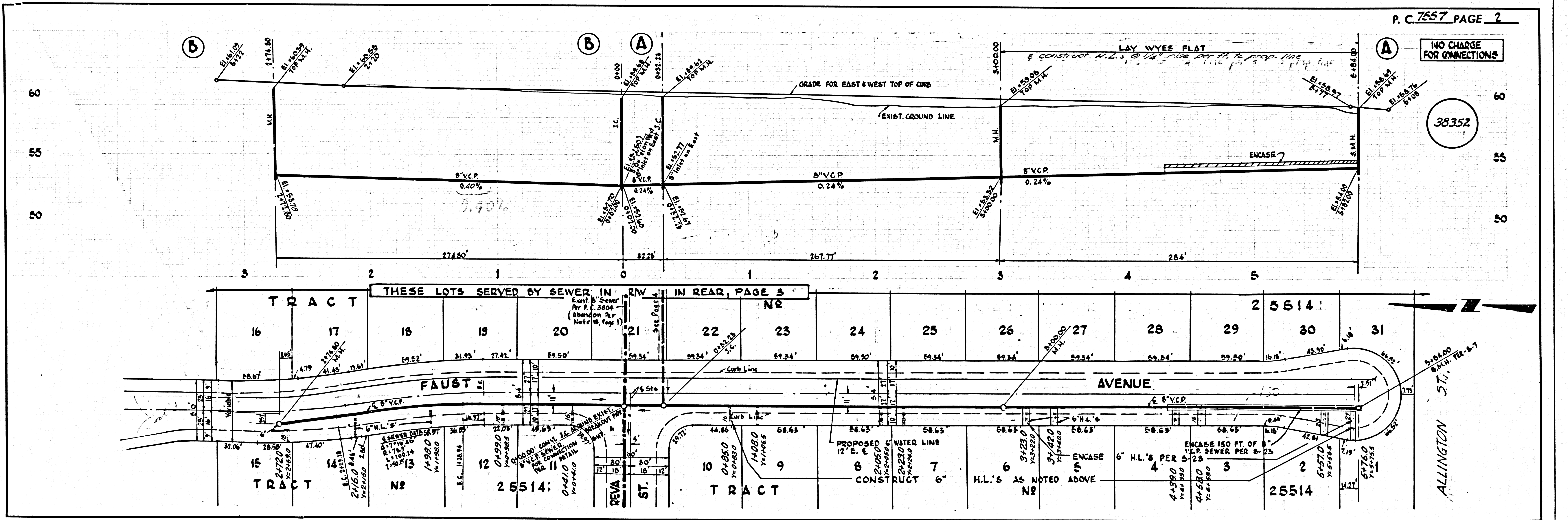
CITY OF LAKWOOD, CALIFORNIA  
 JOHN A. LAMBIE, CITY ENGINEER  
 APPROVED BY: [Signature]  
 ASSISTANT SANITATION ENGINEER

J. D. PARKHURST, CHIEF ENGINEER  
 CO. SAN. DIST. NO. 4  
 APPROVED BY: [Signature]  
 OFFICE ENGINEER

SUBMITTED BY: [Signature]  
 LOP CARETAKER  
 CHECKED BY: [Signature]  
 REG. C. E. NO. 15731

COLLECT CHARGES AS INDICATED  
 John H. June 3/66

NO CONNECTIONS FOR THE DISPOSAL OF INDUSTRIAL WASTES SHALL BE MADE TO SEWERS SHOWN ON THESE DRAWINGS WITHOUT WRITTEN PERMISSION FROM THE CHIEF ENGINEER AND GENERAL MANAGER OF THE COUNTY SANITATION DISTRICTS.

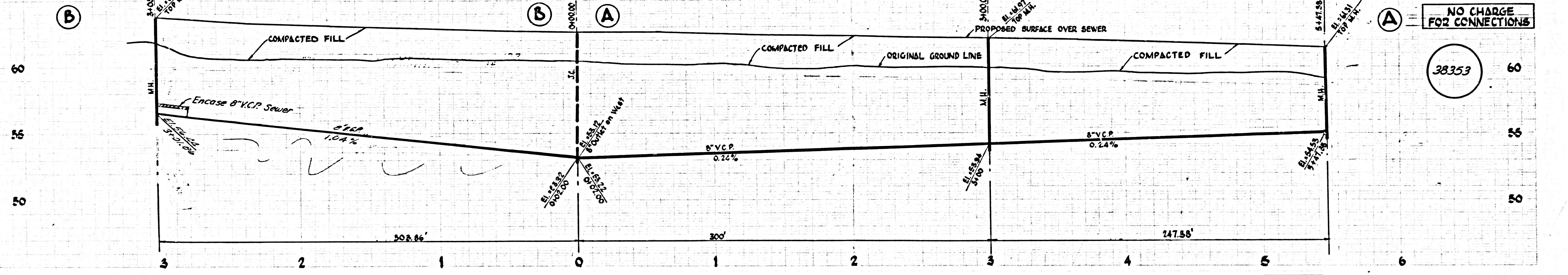


P.C. 7557 PAGE 2

NO CHARGE FOR CONNECTIONS

38352

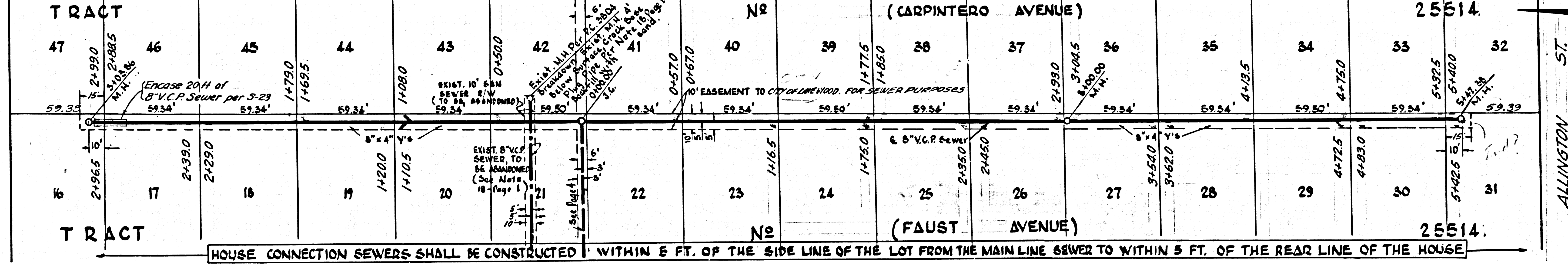




NO CHARGE FOR CONNECTIONS

38353

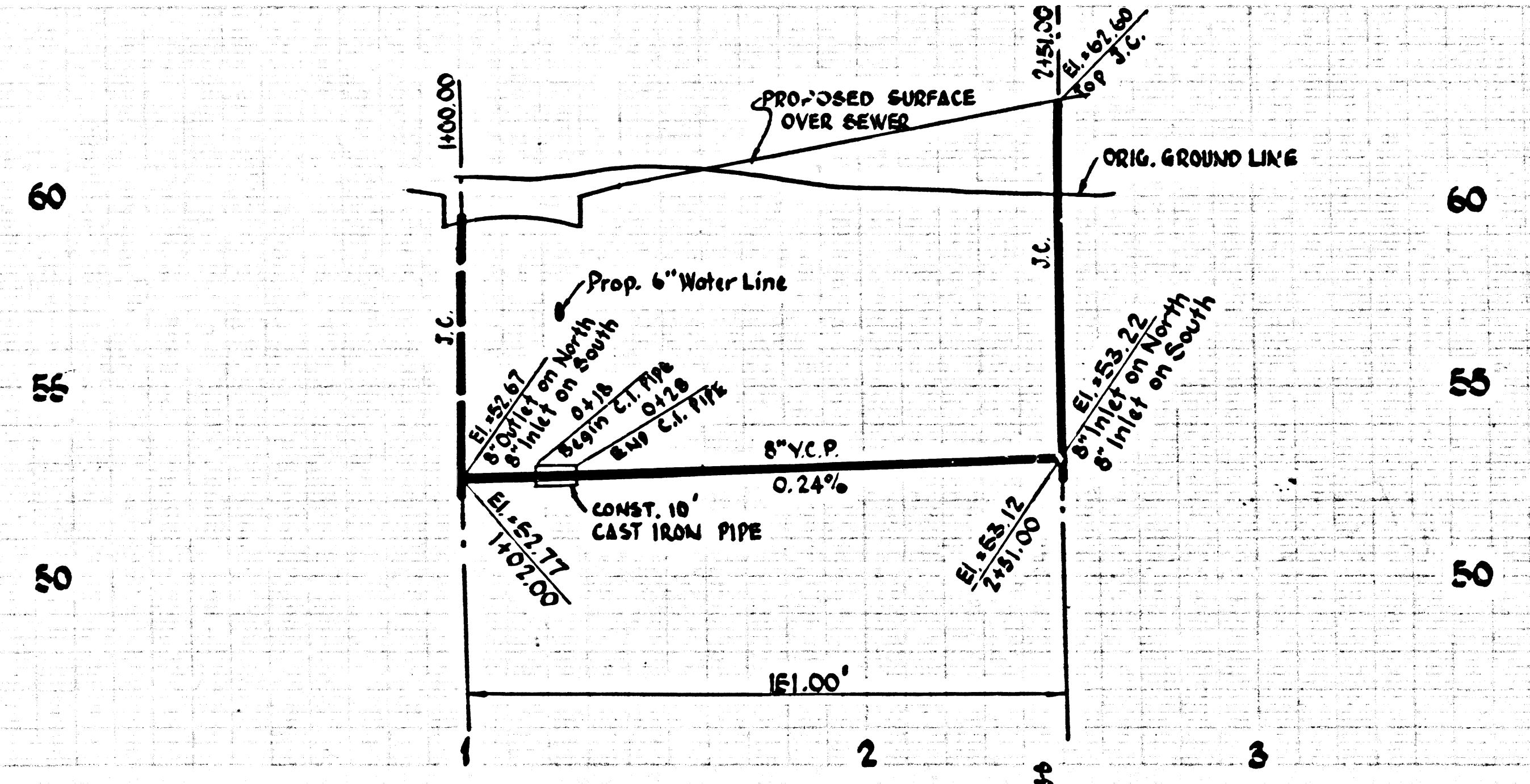
HOUSE CONNECTION SEWERS SHALL BE CONSTRUCTED WITHIN 5 FT. OF THE SIDE LINE OF THE LOT FROM THE MAIN LINE SEWER TO WITHIN 5 FT. OF THE REAR LINE OF THE HOUSE



NO CHARGE FOR CONNECTIONS

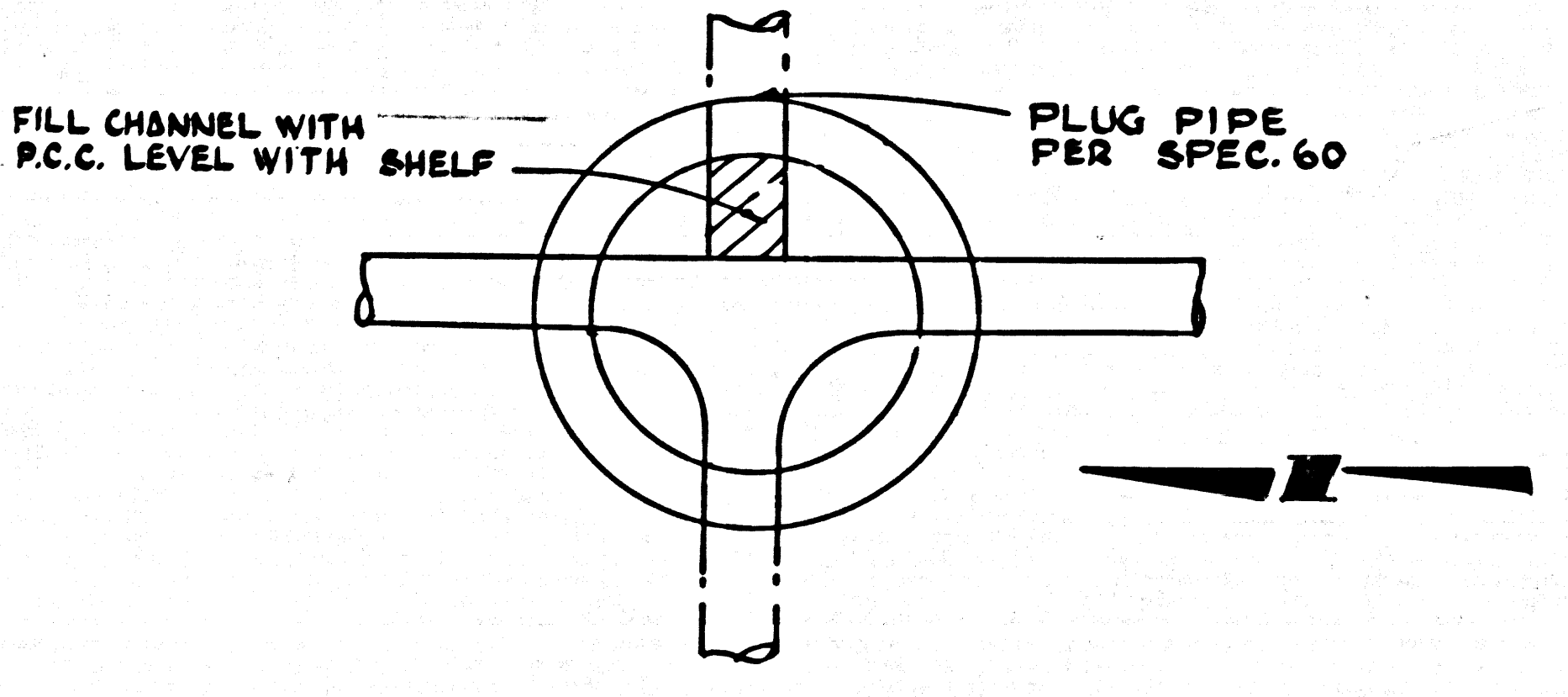
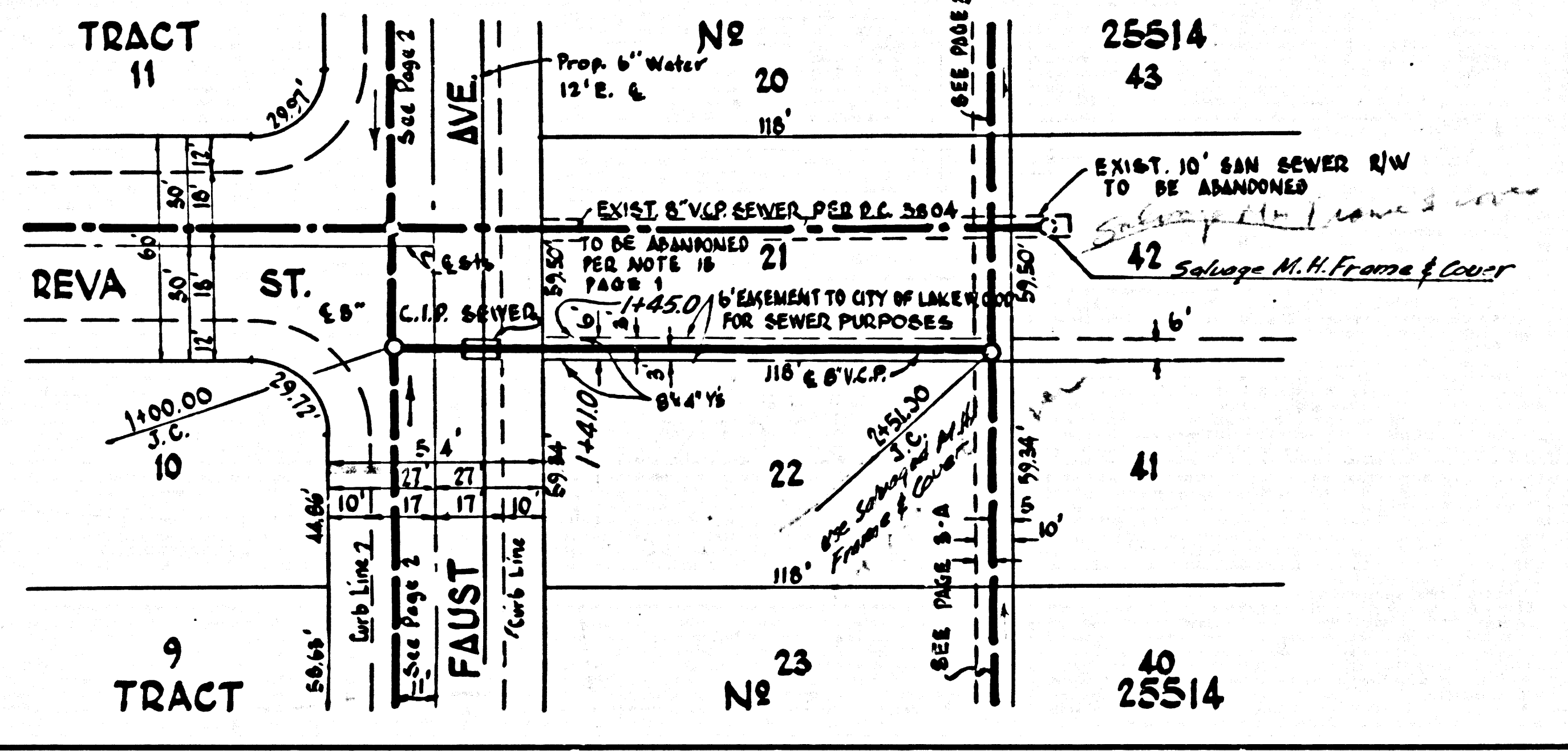
38354

HOUSE CONNECTION SEWERS SHALL BE CONSTRUCTED WITHIN 5 FT. OF THE SIDE LINE OF THE LOT FROM THE MAIN LINE SEWER TO WITHIN 5 FT. OF THE REAR LINE OF THE HOUSE



NO CHARGE FOR CONNECTIONS

38354



DETAIL M.H. BASE  
M.H. STA. 0+00, PAGE 2  
NO SCALE