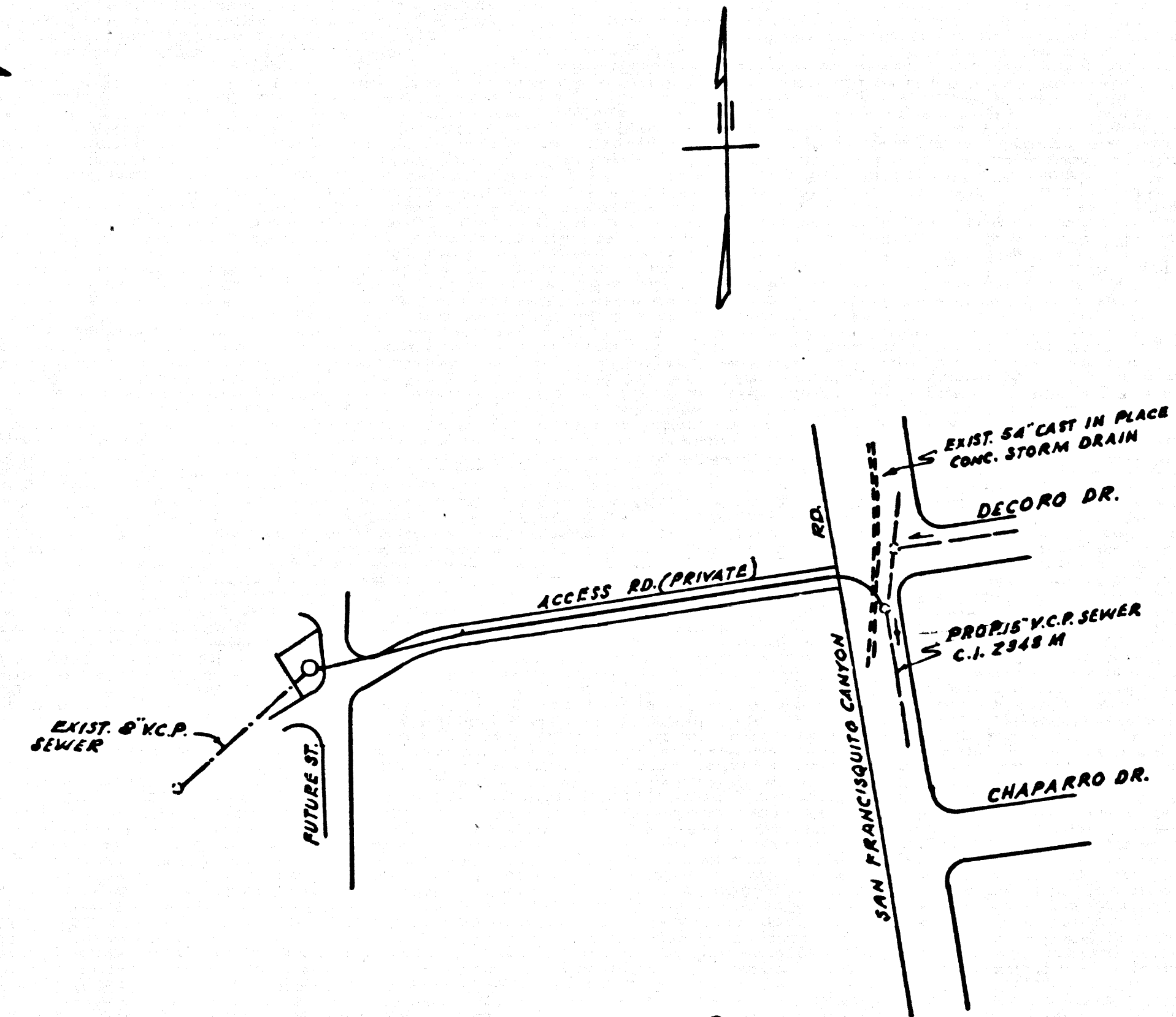


B.M. E.V. N° 5 ELEV. 1743.919
 SAN FRANCISCO CANYON RD. (SO. END SERVICE RD.)
 AND DECORO DR. L. & S.P.K. TOP OF CURB
 S.E. COR. 6' E. OF E. END OF C.R.
 T.B. 2192-33



Any connection to the sewage system of County Sanitation District, provided directly or indirectly by the sewers shown on these plans, shall be considered a temporary connection until all area sewered is annexed to said district, at which time the connection shall become permanent. If for any reason the annexation to the district of any area sewered hereunder is not completed, the property not in the district will be required to disconnect unless a contract is entered into with the district providing for the disposal of sewage from the area.

NEWHALL BLDG. DIST. NO. 82

- NOTES:
- PROVIDE STAKES ON THE PROPERTY LINE OR PROPERTY LINES PRODUCED AT RIGHT ANGLES TO THE SEWER LINE AT THE CENTER LINE OF EACH MANHOLE.
 - NO REPRESENTATIVE OF THE COUNTY ENGINEER WILL SURVEY OR LAY OUT ANY PORTION OF THE WORK.
 - THE PRIVATE ENGINEER SHALL FURNISH THE COUNTY ENGINEER WITH GRADE SHEETS AND STATIONINGS FOR ALL HOUSE LATERALS AND 7" BRANCHES AND SHALL PROVIDE BY 1" E.S. FOR FINAL AT THEIR PROPER LOCATIONS WITH STATIONING FROM THE POINT OF BEGINNING TO THE POINT OF ENDING OF EACH HOUSE LATERAL AND 7" BRANCHES FROM THE MAIN LINE SEWER.
 - ALL HOUSE LATERALS SHALL BE CONSTRUCTED AT A GRADE ALIGNMENT AT RIGHT ANGLES FROM THE MAIN LINE SEWER EXCEPT AS SHOWN ON THE PLANS. HOUSE LATERALS FROM SHEDS SHALL NOT HAVE AN ANGLE OF LESS THAN 45° WITH THE MAIN LINE SEWER. ANY CHANGE IN ALIGNMENT SHALL BE REQUESTED IN WRITING TO THE PRIVATE ENGINEER.
 - THE PRIVATE ENGINEER SHALL FURNISH THE HOUSE LATERAL 6" IN AT THE PROPERTY LINE BELOW THE TOP OF CURB ELEVATION FOR EACH HOUSE LATERAL ON THE GRADE SHEET.
 - NO REVISIONS SHALL BE MADE IN THESE PLANS WITHOUT THE APPROVAL OF THE COUNTY ENGINEER.
 - THE CONTRACTOR SHALL NOTIFY THE CONSTRUCTION DIVISION BY TELEPHONE, MADISON 9-672, EXT. 811, AT LEAST TWENTY-FOUR HOURS BEFORE STARTING ANY WORK UNDER THIS CONTRACT.
 - MANHOLES SHALL BE 24" DIAMETER PER S-22. PRECAST CONCRETE MANHOLES PER S-22 OR S-24 MAY BE USED AS AN ALTERNATE IN LOCATIONS APPROVED BY THE COUNTY ENGINEER.
 - USE STANDARD MANHOLE FRAMES AND COVERS, S-15, EXCEPT AS NOTED.
 - MANHOLE TOPS IN UNIMPROVED RIGHTS-OF-WAY TO BE SIX INCHES ABOVE FINISHED GRADE.
 - USE EXTRA STRENGTH PIPE. ALL PIPE IS STANDARD DEPTH EXCEPT AS NOTED.
 - USE MECHANICAL COMPRESSION JOINTS FOR ALL V.C.P. JOINTS PER SPECS. S-22, S-24, S-25.
 - IF A POWER POLE IS WITHIN THREE FEET OF THE SEWER, THE SEWER SHALL BE ENCASED, PER S-22, TWO FEET ON EACH SIDE FROM THE POINT OF INTERFERENCE.
 - IF DURING THE COURSE OF CONSTRUCTION IT IS DETERMINED THAT THERE IS LESS THAN FOUR FEET OF COVER OVER THE TOP OF A MAIN LINE OR HOUSE LATERAL A.C. SEWER WHICH IS NOT INDICATED ON THE PLANS, THE PIPE SHALL BE ENCASED PER S-22, UNLESS OTHERWISE APPROVED BY THE COUNTY ENGINEER.
 - HOUSE LATERALS TO BE CONSTRUCTED WITH INVERTS AT PROPERTY LINE 6" FEET BELOW CURB GRADE EXCEPT AS NOTED.
 - RESURFACE ALL TRENCHES WITHIN PAVED AREAS TO MEET L.A. COUNTY ROAD DEPT. OR CALIFORNIA STATE HIGHWAY REQUIREMENTS IN ACCORDANCE WITH PERMITS.
 - FOR ALLOWABLE LEAKAGE TEST USE FORMULA NO. 2, SPECS. SEC. 54.
 - ALL STATE AND LOCAL TRENCH SAFETY ORDERS WILL BE STRICTLY ENFORCED.

ALLOW NO CONNECTIONS
Thomas S. Hauer

NO CONNECTIONS FOR THE DISPOSAL OF INDUSTRIAL WASTES SHALL BE MADE TO SEWERS SHOWN ON THESE DRAWINGS WITHOUT WRITTEN PERMISSION FROM THE CHIEF ENGINEER AND GENERAL MANAGER OF THE COUNTY SANITATION DISTRICTS.

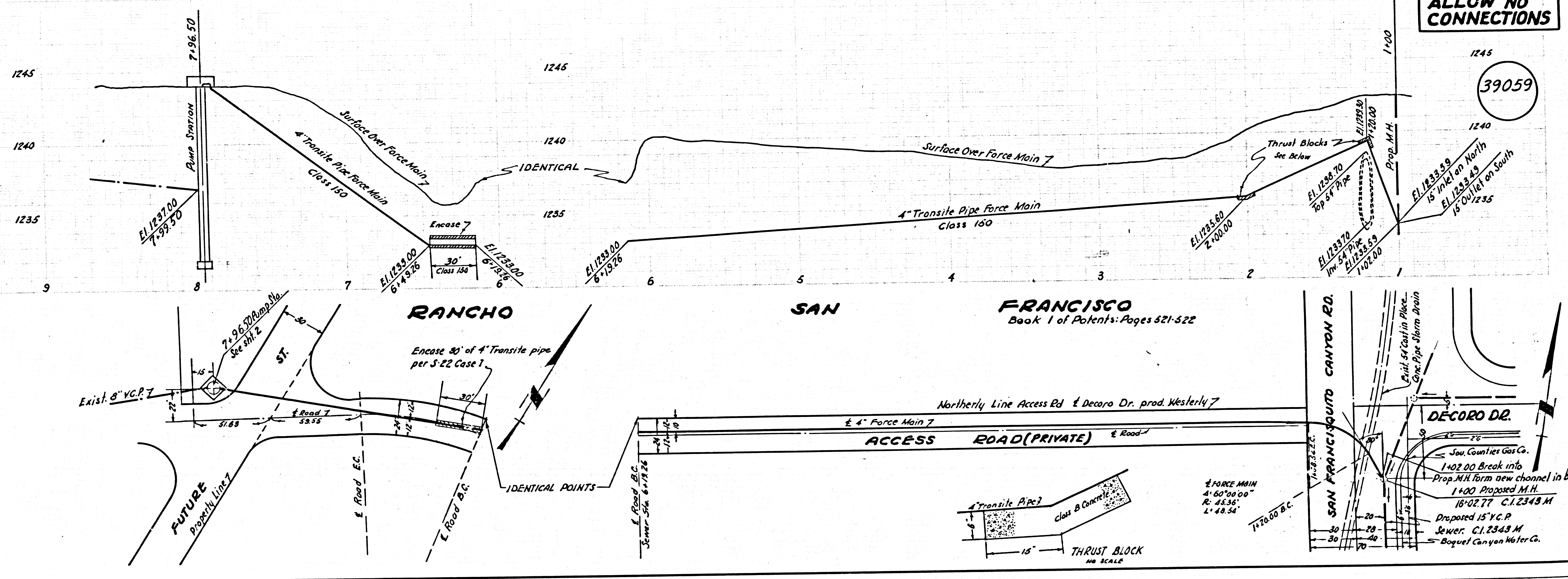
PROFILE, ALIGNMENT AND GRADE OF P.C. 7566
SANITARY SEWERS PAGE 1
 PUMP STATION AND FORCE MAIN TO BE CONSTRUCTED IN
 PRIVATE RIGHT OF WAY
 FOR
 W.M.S. HART UNION HIGH SCHOOL DISTRICT
PRIVATE CONTRACT NO. 7566

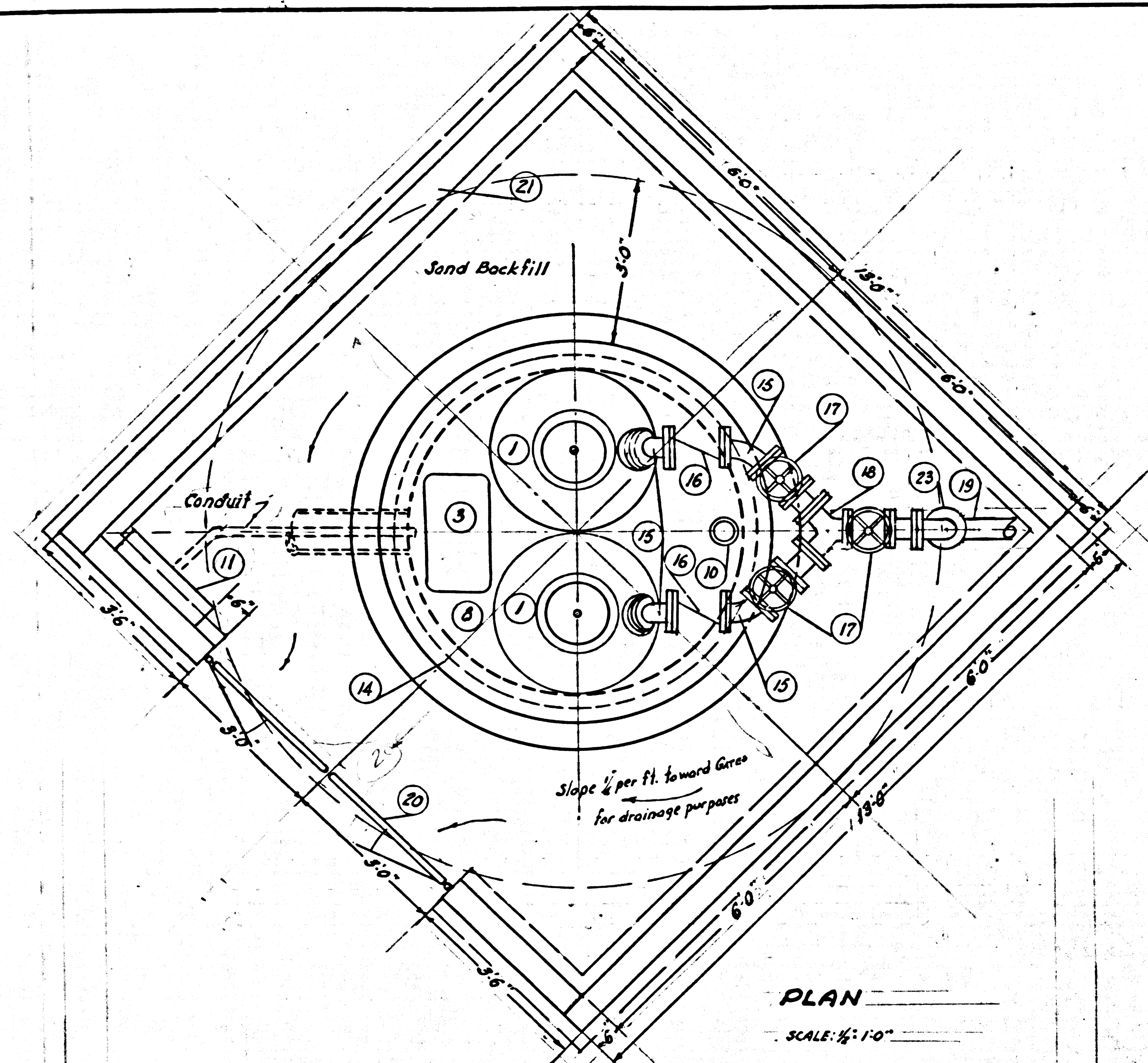
W.S. 62
 2 SHEETS, 3 PAGES
 SCALE: VERT. 1" = 4' HORIZ. 1" = 40' NOV. 1965
 PREPARED IN THE OFFICES OF
HOPEN, HEDLUND & DARBY, INC.
 BY: *Howard B. Hedlund*
 REG. C. E. NO. 14075
 FOR LEGEND SEE PLAN NO. S-1

NOTE:
 GRADES TO WHICH THIS IMPROVEMENT IS TO BE CONSTRUCTED ARE SHOWN ON PLANS AND PROFILES. GRADE POINTS FOR TOP OF CURBS, CENTER LINE OF STREETS, OR CENTER LINE OF ALLEYS ARE SHOWN BY CIRCLES ON PROFILES. AT ALL POINTS BETWEEN DESIGNATED POINTS THE GRADE SHALL BE ESTABLISHED SO AS TO CONFORM TO A STRAIGHT LINE BETWEEN SAID DESIGNATED POINTS. ELEVATIONS ARE IN FEET ABOVE U.S.C. & G.S. SEA LEVEL DATUM OF 1929. THIS DRAWING AND THE DATA HEREON ARE HEREBY MADE A PART OF THE SPECIFICATIONS. AS A GENERAL WORK SHALL BE CONSTRUCTED ACCORDING TO STANDARD SPECIFICATIONS DATED JULY 26, 1962, ON FILE IN THE OFFICE OF THE COUNTY ENGINEER AND SHALL BE PROSECUTED ONLY BY THE PRESENCE OF THE COUNTY ENGINEER. BEFORE WORK CAN BE STARTED, THE CONTRACTOR MUST OBTAIN A PERMIT TO EXCAVATE IN COUNTY STREETS FROM THE L.A. COUNTY ROAD DEPT., DISTRICT OFFICE NO. 312, AND PAY A FEE TO THE COUNTY ENGINEER, ROOM 509, COUNTY ENGINEERING BUILDING, 100 WEST SECOND STREET, LOS ANGELES, CALIFORNIA. REGIONAL OFFICE, SUFFICIENT TO COVER THE COST OF CONSTRUCTION INSPECTION AND RECORD PLANS. APPROVAL OF THIS PLAN BY THE COUNTY OF LOS ANGELES DOES NOT CONSTITUTE A REPRESENTATION AS TO THE ACCURACY OF THE LOCATION OR THE EXISTENCE OR NON-EXISTENCE OF ANY UNDERGROUND UTILITY PIPE, OR STRUCTURE WITHIN THE LIMITS OF THE PROJECT. THIS NOTE APPLIES TO ALL PAGES. IF WORK IS TO BE DONE IN A STATE HIGHWAY, A PERMIT MUST BE OBTAINED FROM THE STATE OF CALIFORNIA, DIVISION OF HIGHWAYS, 139 SOUTH SPRING STREET, LOS ANGELES, CALIFORNIA.

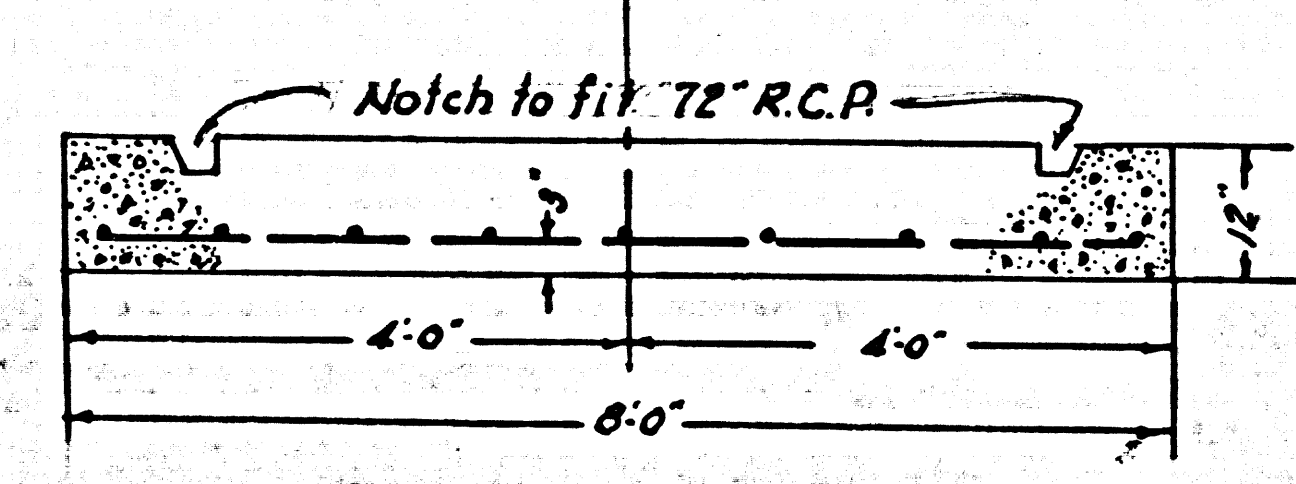
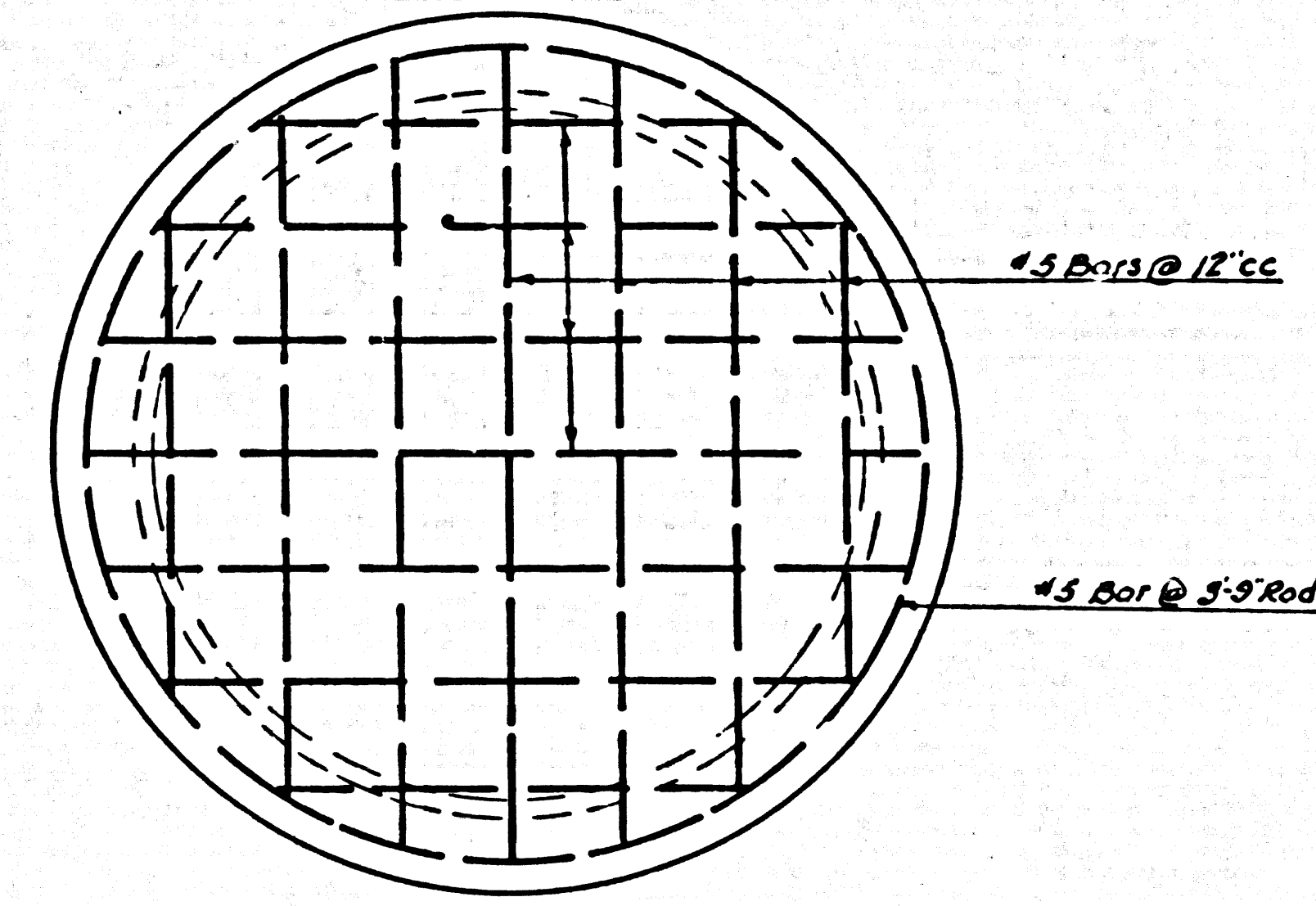
COUNTY OF LOS ANGELES, CALIFORNIA
 JOHN A. LAMBIE, COUNTY ENGINEER J. D. PARKHURST, CHIEF ENGINEER
 CO. SAN. DIST. NO. 26
 APPROVED BY: *R. W. S. Kline* ASSISTANT SANITATION ENGINEER APPROVED BY: *J. D. Parkhurst* OFFICE ENGINEER
 CHECKED BY: *R. J. G. Smith* REG. C. E. NO. 14390
 39058
 J. N. 0367.03

ALLOW NO CONNECTIONS
 39059

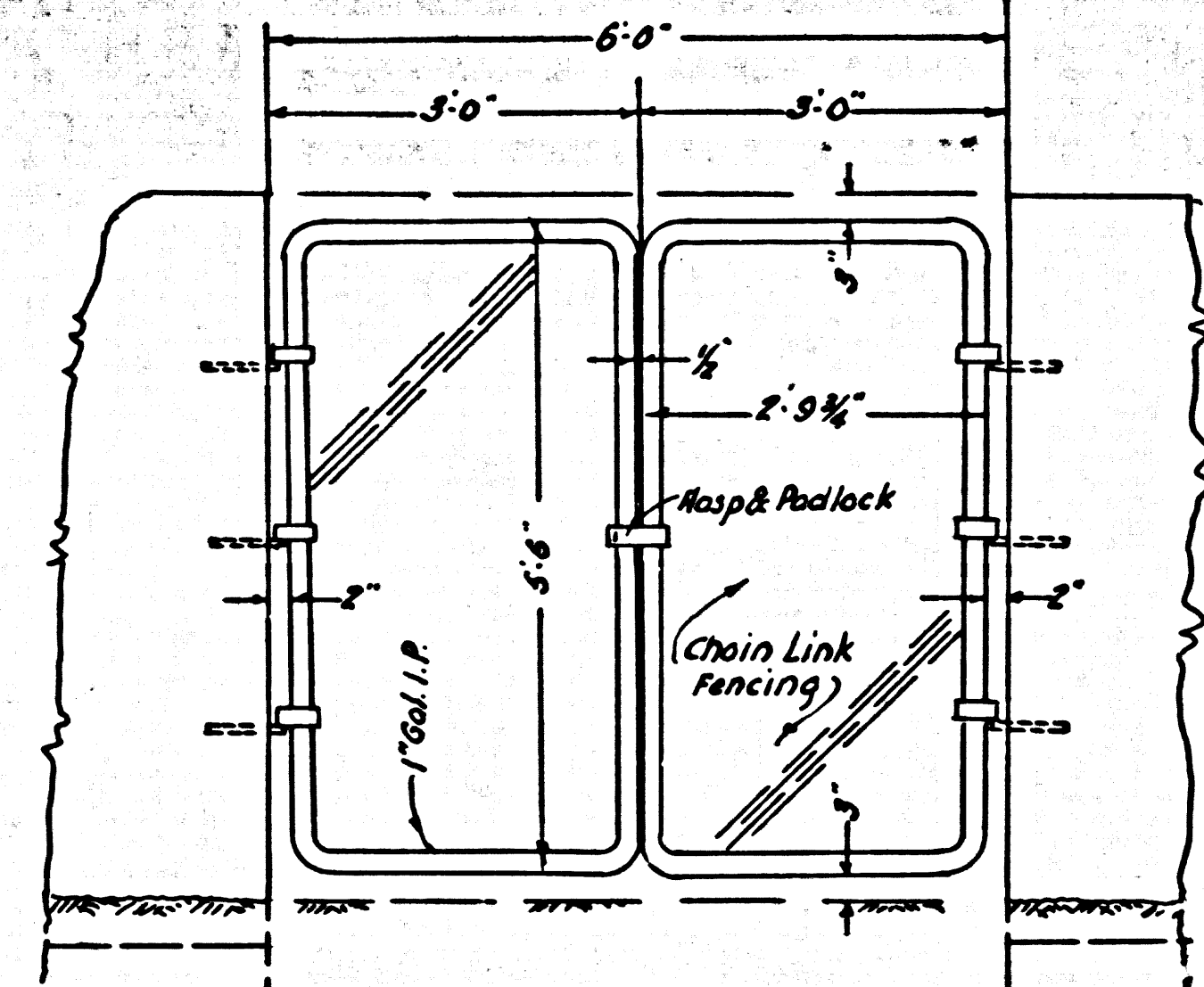




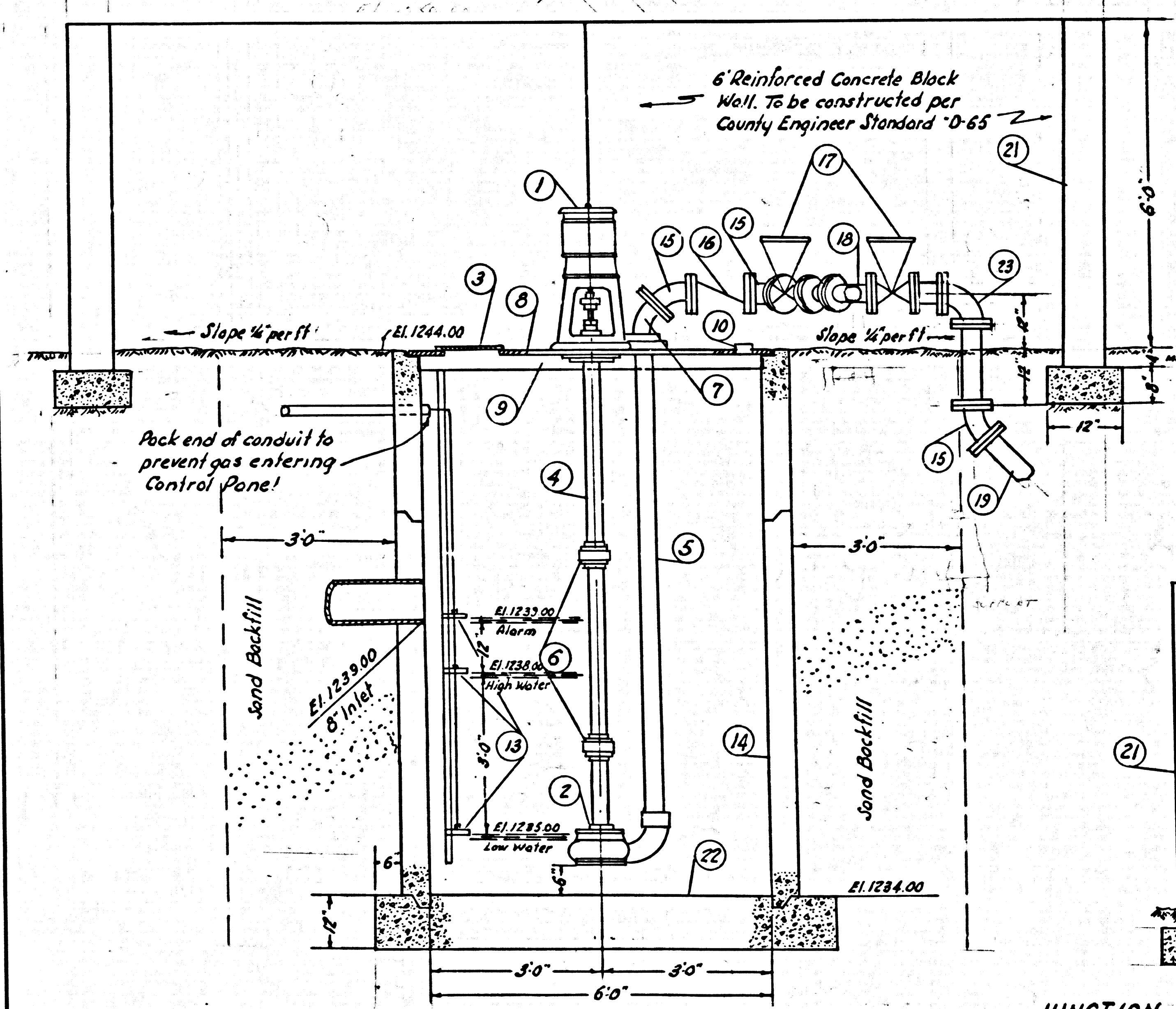
PLAN
SCALE: 1/4" = 1'-0"



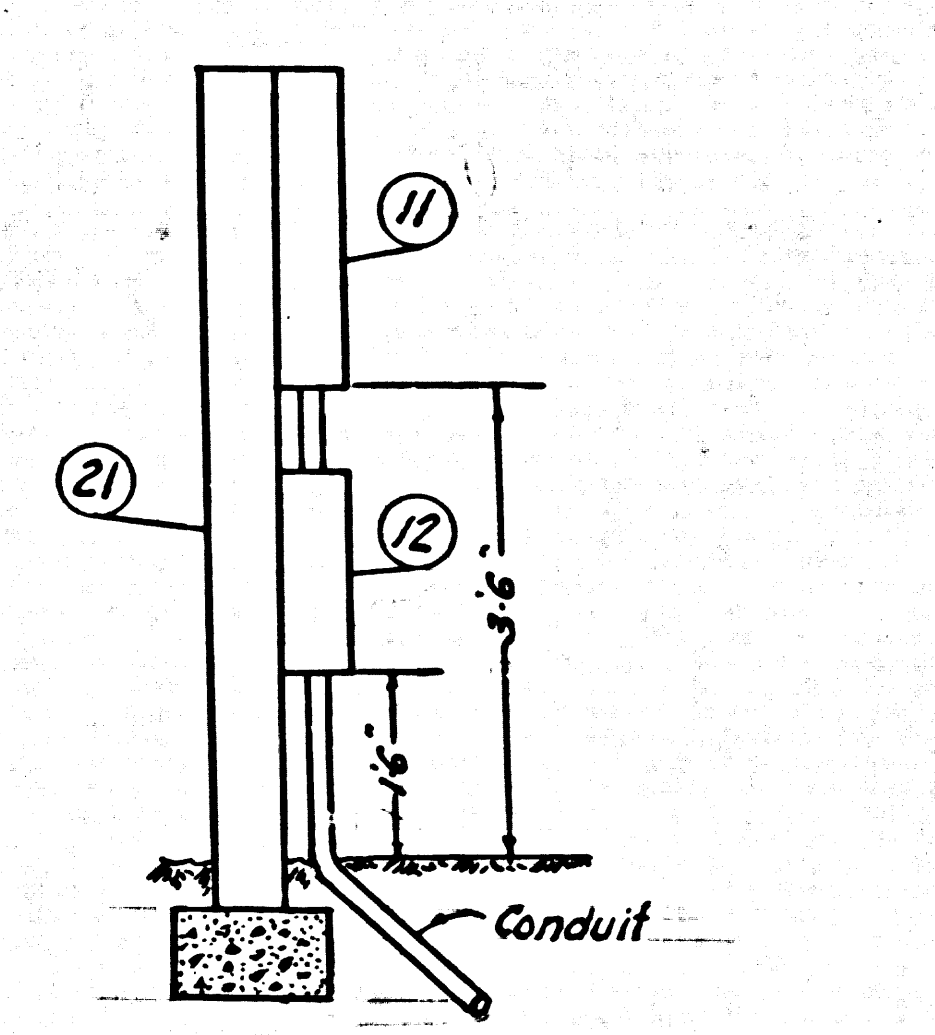
SLAB
SCALE: 1/2" = 1'-0"



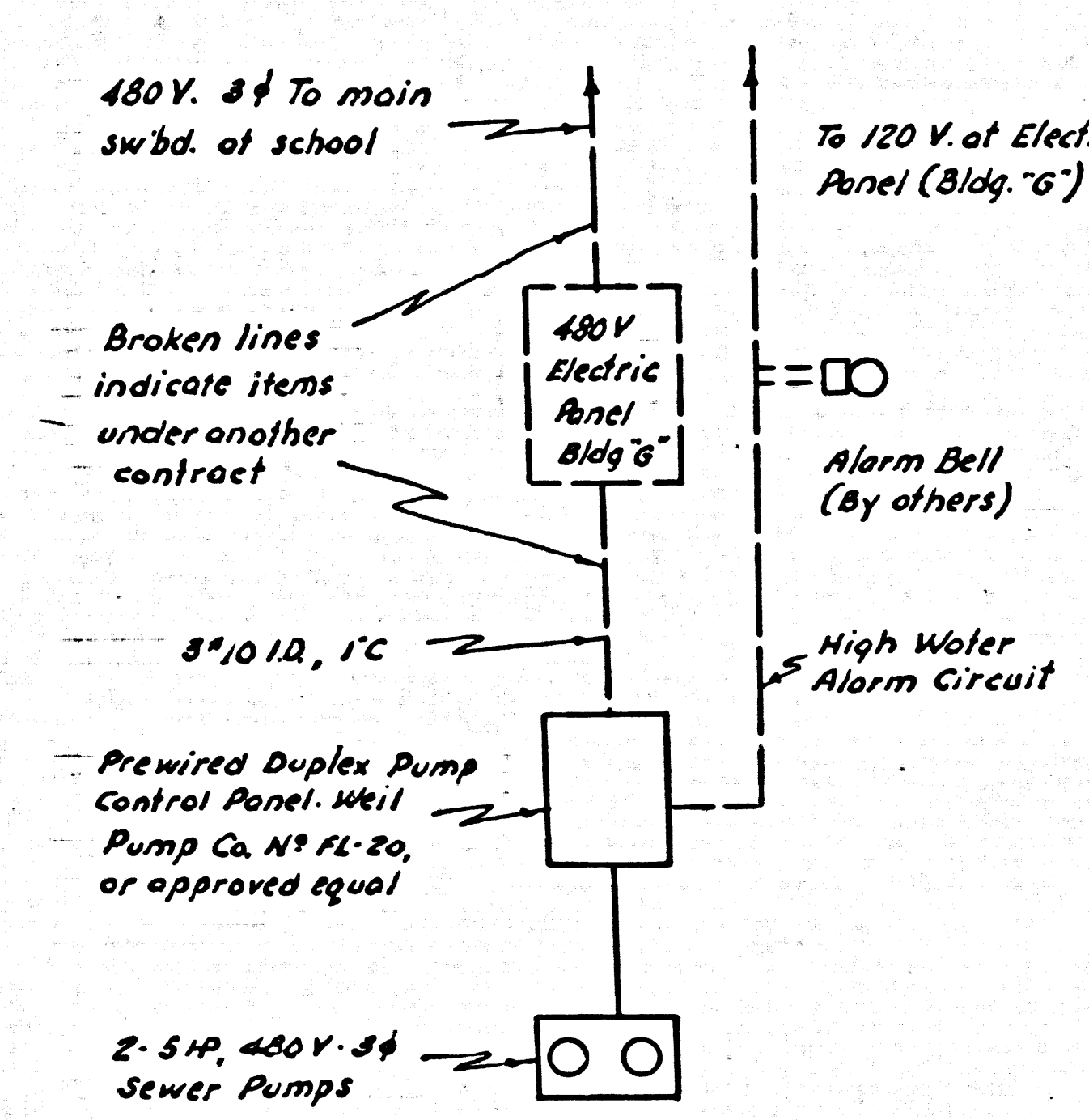
GATES
SCALE: 1/2" = 1'-0"



ELEVATION
PUMP STATION
7-37.55
SCALE: 1/4" = 1'-0"



JUNCTION BOX AND CONTROL PANEL
SCALE: 1/2" = 1'-0"



SINGLE LINE WIRING DIAGRAM

MATERIAL LIST		
ITEM	DESCRIPTION	QUANTITY
1	MOTOR	2
2	HEAVY DUTY SUBMERGED SEWAGE EJECTOR	2
3	INSPECTION PLATE - STEEL	1
4	PUMP SHAFT HOUSING	2
5	PUMP DISCHARGE 4" C.I.	2
6	INTERMEDIATE BEARINGS	4
7	ELBOW - 45° - 4" C.I. FLANGED	2
8	CIRCULAR COVER FOR WET WELL	1
9	CIRCULAR COVER FRAME - STEEL	1
10	VENT - 4" C.I.	1
11	CONTROL PANEL	1
12	JUNCTION BOX	1
13	MICRO SWITCH LEVEL CONTROL	1
14	WET WELL 72" R.C.P. (D Load 1350)	1
15	ELBOW - 45° - 4" C.I. FLANGED	5
16	CHECK VALVE 4" C.I. FLANGED (SEE NOTE 6 BELOW)	2
17	GATE VALVE 4" C.I. FLANGED	3
18	DOUBLE Y BRANCH 4" C.I. FLANGED	1
19	FORCE MAIN 4" TRANSITE (CLASS 150)	630 LINT.
20	GATES - WIRE	2
21	CONCRETE BLOCK WALL	1
22	BOTTOM SLAB - REINFC CONC. (SEE DETAIL)	1
23	ELBOW 90° - 4" C.I. FLANGED	1

NOTE:
1- Weil Pump Co. Unit, N° C.S.A. 4, 5 HP Motor, 480 Volt, 3 Phase, 60 Cycle, 1750 R.P.M. or approved equal.
2- Weil Pump Co. Circular Cover for Wet Well N° C 916 or approved equal.
3- Weil Pump Co. Circular Cover Frame N° C-9005 or approved equal.
4- Weil Pump Co. Control Panel N° FL-20 or approved equal.
5- Weil Pump Co. Micro Switch Level Control N° FL-21 or approved equal.
6- Check Valves to have extended hinge pin and external weight for closing.
All Valves and fittings to be Class 125

39060

PUMP STATION
FOR
WM.S. HART UNION HIGH SCHOOL DISTRICT
ARROYO SECO JUNIOR HIGH SCHOOL

PREPARED IN THE OFFICE OF
HOPEN, HEDLUND AND DARBY, INC.
BY: *[Signature]*
R.C.E. 14678

SCALE AS SHOWN NOV. 1965.
PRIVATE CONTRACT N° 7566
COUNTY OF LOS ANGELES CALIFORNIA

JOHN A. LAMBIE, COUNTY ENGINEER J.D. PARKHURST, CHIEF ENGINEER.
CO. SAN. DIST. N° 26
APPROVED BY: *[Signature]* APPROVED BY: *[Signature]*
ASSISTANT SANITATION ENGR. OFFICE ENGR.

CHECKED BY: *[Signature]*
R.C.E. N° 14330