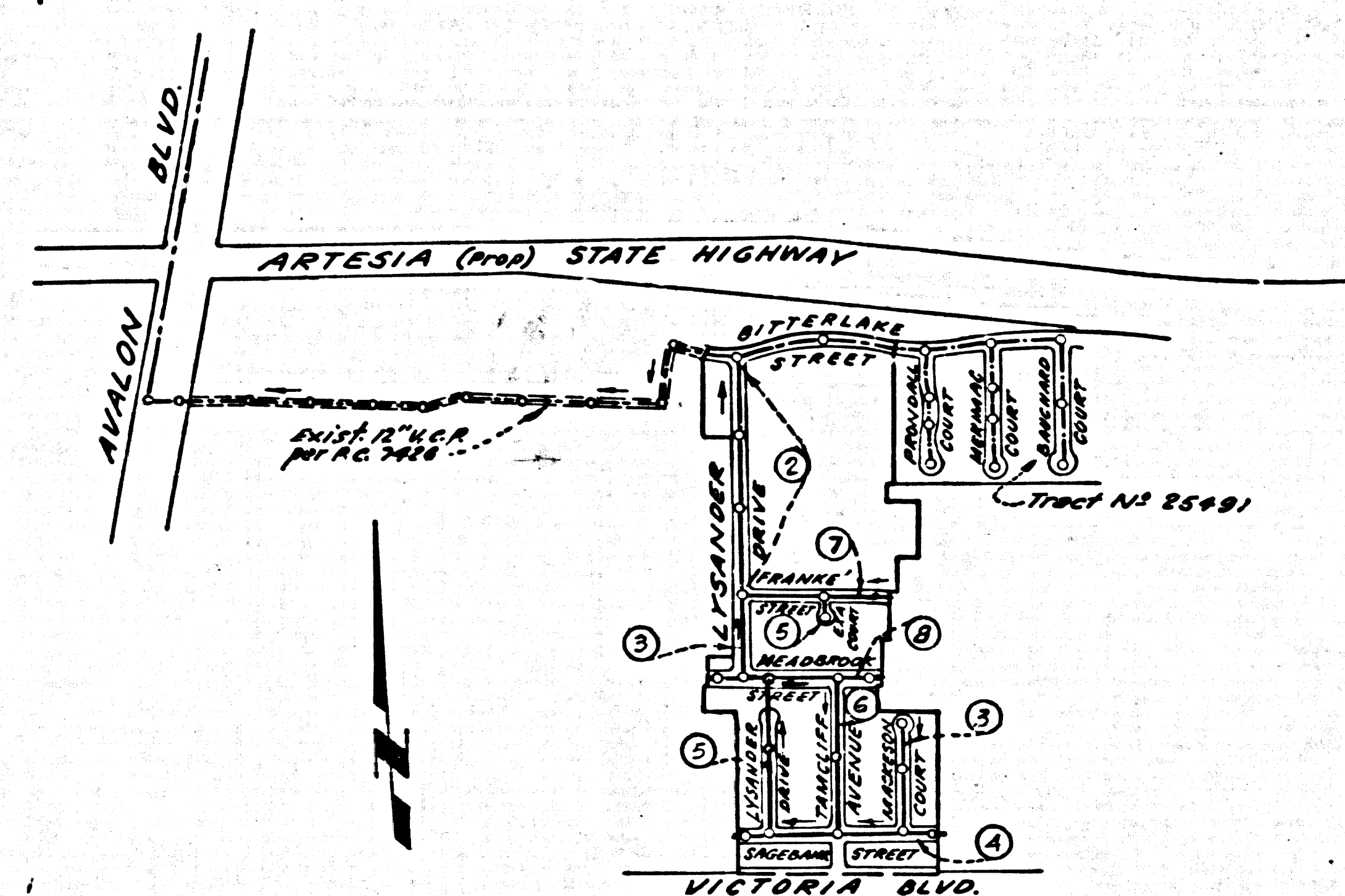


B.M. SY-3125 ELEV. 42.502
 LT IN CONC. BASE OF N.E. LEG OF POWER
 TRANSFORMER TOWER #4107 & AVALON
 BLVD. 1st TOWER SW. OF ARTESIA BLVD.
 GARDENA QUAD. QUAD. 19 60



INDEX MAP
 Tract No 23924
 P.C. 7570
 SCALE: 1" = 600'

REVISION: June 1966
 Page 4-A, M.H. 6+31.00 moved
 westerly to sta. 6+23.00

Approved: *Edward J. Volz*
 Office of County Engineer

REVISION: August 14, 1966
 Revised W/S and of "Curb and Street"
 to show drainage and sewer alignment

Approved: *Edward J. Volz*
 Office of County Engineer

LENNOX BLDG. DIST. NO. 7

PROFILE, ALIGNMENT AND GRADE OF
 SANITARY SEWERS PAGE 1

TRACT NO 23924

PRIVATE CONTRACT NO. 7570

W.S. 26
 4 SHEETS, 8 PAGES
 SCALE: HORIZ. 1" = 40' VERT. 1" = 4'

38425

PREPARED IN THE OFFICES OF
 E.L. PEARSON & ASSOCIATES

By *James L. Clark*
 REG. C.E. NO. 9757

FOR LEGEND SEE PLAN NO. S-1

- NOTES:
1. PROVIDE STAKES ON THE PROPERTY LINE OR PROPERTY LINES PRODUCED AT RIGHT ANGLES TO THE SEWER LINE AT THE CENTER LINE OF EACH MANHOLE.
 2. NO REPRESENTATIVE OF THE COUNTY ENGINEER WILL SURVEY OR LAY OUT ANY PORTION OF THE WORK.
 3. THE PRIVATE ENGINEER SHALL FURNISH THE COUNTY ENGINEER WITH GRADE SHEETS AND STATIONING FOR ALL HOUSE LATERALS AND "T" BRANCHES AND SHALL PROVIDE STAKES FOR THEM AT THEIR PROPER LOCATIONS WITH STATIONING PLAINLY MARKED. ALL HOUSE LATERALS SHALL BE CONSTRUCTED IN A STRAIGHT ALIGNMENT AT RIGHT ANGLES FROM THE MAIN LINE SEWER EXCEPT AS SHOWN ON THE PLANS. HOUSE LATERALS FROM CHIMNEYS SHALL NOT HAVE AN ANGLE OF LESS THAN 45° WITH THE MAIN LINE SEWER. ANY CHANGE IN ALIGNMENT SHALL BE REQUESTED IN WRITING BY THE PRIVATE ENGINEER.
 4. THE PRIVATE ENGINEER SHALL FURNISH THE HOUSE LATERAL DEPTH AT THE PROPERTY LINE BELOW THE TOP OF CURB ELEVATION FOR EACH HOUSE LATERAL ON THE GRADE SHEET.
 5. NO REVISIONS SHALL BE MADE IN THESE PLANS WITHOUT THE APPROVAL OF THE COUNTY ENGINEER.
 6. THE CONTRACTOR SHALL NOTIFY THE CONSTRUCTION DIVISION BY TELEPHONE, BUREAU 9-4747, EXT. 81180, AT LEAST TWENTY-FOUR HOURS BEFORE STARTING ANY WORK UNDER THIS CONTRACT.
 7. MANHOLES SHALL BE BRICK SEWER STRUCTURES PER S.S. PRECAST CONCRETE MANHOLES PER S-4 OR S-4 MAY BE USED AS AN ALTERNATE IN LOCATIONS APPROVED BY THE COUNTY ENGINEER.
 8. USE STANDARD MANHOLE FRAMES AND COVERS, S.I.E. EXCEPT AS NOTED.
 9. MANHOLE TOPS IN UNIMPROVED RIGHTS-OF-WAY TO BE SIX INCHES ABOVE FINISHED GRADE.
 10. USE EXTRA STRENGTH PIPE. ALL PIPE IS STANDARD DEPTH EXCEPT AS NOTED.
 11. USE MECHANICAL COMPRESSION JOINTS FOR ALL V.C.P. JOINTS PER S.P.C.S., SECS. 34, 35 & 36.
 12. IF A POWER POLE IS WITHIN THREE FEET OF THE SEWER, THE SEWER SHALL BE ENCASED, PER S-23, TWO FEET ON EACH SIDE FROM THE POINT OF INTERFERENCE.
 13. IF DURING THE COURSE OF CONSTRUCTION IT IS DETERMINED THAT THERE IS LESS THAN FOUR FEET OF COVER OVER THE TOP OF A MAIN LINE OR HOUSE LATERAL V.C.P. SEWER WHICH IS NOT INDICATED ON THE PLANS, THE PIPE SHALL BE ENCASED PER S-23, UNLESS OTHERWISE APPROVED BY THE COUNTY ENGINEER.
 14. HOUSE LATERALS TO BE CONSTRUCTED WITH INVERTS AT PROPERTY LINE 4 FEET BELOW CURB GRADE EXCEPT AS NOTED.
 15. REUSE/REPAIR ALL TRENCHES WITHIN PAVED AREAS TO MEET L.A. COUNTY ROAD DEPT. OR CALIFORNIA STATE HIGHWAY REQUIREMENTS IN ACCORDANCE WITH PERMITS.
 16. FOR ALLOWABLE LEAKAGE TEST USE FORMULA NO. 2, S.P.C.S., SEC. 34.
 17. ALL STATE AND LOCAL TRENCH SAFETY ORDERS WILL BE STRICTLY ENFORCED.
 18. THE LOCATION AND LOCATION OF ANY UNDERGROUND UTILITY LINES, CONDUITS OR STRUCTURES SHOWN ON THESE PLANS ARE SHOWN BY SEARCH OF THE AVAILABLE RECORDS. TO THE BEST OF OUR KNOWLEDGE, THERE ARE NO OTHER UTILITIES EXCEPT AS SHOWN ON THE PLANS. THE CONTRACTOR IS RESPONSIBLE TO TAKE CARE AND CONDUCT A PRELIMINARY SURVEY OF THE PROPERTY TO VERIFY THE UTILITY LINES SHOWN AND ANY OTHER LINES NOT ON RECORD OR NOT SHOWN ON THESE DRAWINGS. THE CONTRACTOR FURTHER ASSUMES ALL LIABILITY AND RESPONSIBILITY FOR THE UTILITY LINES, CONDUITS, LINES OR STRUCTURES SHOWN OR NOT SHOWN ON THESE DRAWINGS.
 19. (a) All test reports on these drawings or on any other drawings shall be submitted to the Construction Division. Compaction tests are to be made in accordance with S.P.C.S., Standard Method of Test C-608-49.
 - (b) No construction is permitted in filled areas where the relative density of the fill is less than 80%.
 - (c) If the relative density of the fill is less than 80% all main line and house laterals shall be encased per S-23, or have a special load course per S-21, Case III. Special Manhole Bases per S-4 are required.
 - (d) If the relative density of the fill is less than 80% the special provisions in C. are not required.

GRADES TO WHICH THIS IMPROVEMENT IS TO BE CONSTRUCTED ARE SHOWN ON PLANS AND PROFILE. GRADE POINTS FOR TOP OF CURB, CENTER LINE OF STREETS, OR CENTER LINE OF ALLEYS ARE SHOWN BY CIRCLES ON PROFILES. AT ALL POINTS BETWEEN DESIGNATED POINTS THE GRADE SHALL BE ESTABLISHED TO BE TO CORRESPOND TO A STRAIGHT LINE BETWEEN SAID DESIGNATED POINTS. ELEVATIONS ARE IN FEET ABOVE U.S.C. & G.S. MEAN SEA LEVEL DATUM OF 1929.

THE DRAWING AND THE DATA HEREON ARE HEREBY MADE A PART OF THE SPECIFICATIONS. AS PROVIDED IN THE SPECIFICATIONS, WORK SHALL BE CONSTRUCTED ACCORDING TO STANDARD SPECIFICATIONS DATED MAY 22, 1954, ON FILE IN THE OFFICE OF THE COUNTY ENGINEER, DISTRICT OFFICE NO. 38, AND IN THE OFFICE OF THE COUNTY ENGINEER, ROOM 302, COUNTY ENGINEERING BUILDING, 100 WEST SECOND STREET, LOS ANGELES, CALIFORNIA. THE WEST SECOND STREET OFFICE IS THE REGIONAL OFFICE, SUPPLEMENT TO COVER THE COST OF APPROVAL OF THE PLAN BY THE COUNTY OF LOS ANGELES DOES NOT CONSTITUTE A REPRESENTATION AS TO THE ACCURACY OF THE LOCATION OF OR THE EXISTENCE OF NON-EXISTING OR ANY UNDERGROUND UTILITY LINES OR STRUCTURES WITHIN THE LIMITS OF THIS PROJECT. THIS NOTE APPLIES TO ALL PAGES.

IF WORK IS TO BE DONE IN A STATE HIGHWAY, A PERMIT MUST BE OBTAINED FROM THE STATE OF CALIFORNIA, DIVISION OF HIGHWAYS, 120 SOUTH SPRING STREET, LOS ANGELES, CALIFORNIA.

COUNTY OF LOS ANGELES, CALIFORNIA
 JOHN A. LAMBE, COUNTY ENGINEER
 J. D. PARKHURST, CHIEF ENGINEER
 CO. SANITARY DISTRICT

APPROVED BY: *James L. Clark*
 ASSISTANT SANITATION ENGINEER

APPROVED BY: *Edward J. Volz*
 OFFICE ENGINEER

SUBMITTED BY: *James L. Clark*
 REGIONAL ENGINEER

CHECKED BY: *Edward J. Volz*
 REG. C.E. NO. 12653

COLLECT CHARGES
 AS INDICATED

L. Curtis

NO CONNECTIONS FOR THE DISPOSAL OF INDUSTRIAL WASTES SHALL BE MADE TO SYSTEMS SHOWN ON THESE DRAWINGS WITHOUT WRITTEN PERMISSION FROM THE CHIEF ENGINEER AND GENERAL MANAGER OF THE COUNTY SANITATION DISTRICTS.

J.N. 0367.05

