

B.M. 31 602 ELEV. 1262.071  
ROAD DEPT. 8 M. THE NORTH SIDE CORNER  
OF M. B. 741-63-68  
TRAILER TOWER NO. 11-37513-3 35'  
SOUTH OF CENTERLINE OF JENA DRIVE  
AND 3.30' EAST OF CENTERLINE OF  
NEWHALL CANYON ROAD  
NEWHALL QUAD. 1958

| REVISIONS  | DATE    | BY     | APPROVED         |
|--|---------|--------|------------------|
| 1. Change Note Reference from 6" to 8" on all pages. | 3/25/66 | R.S.K. | P. J. J. 3/25/66 |

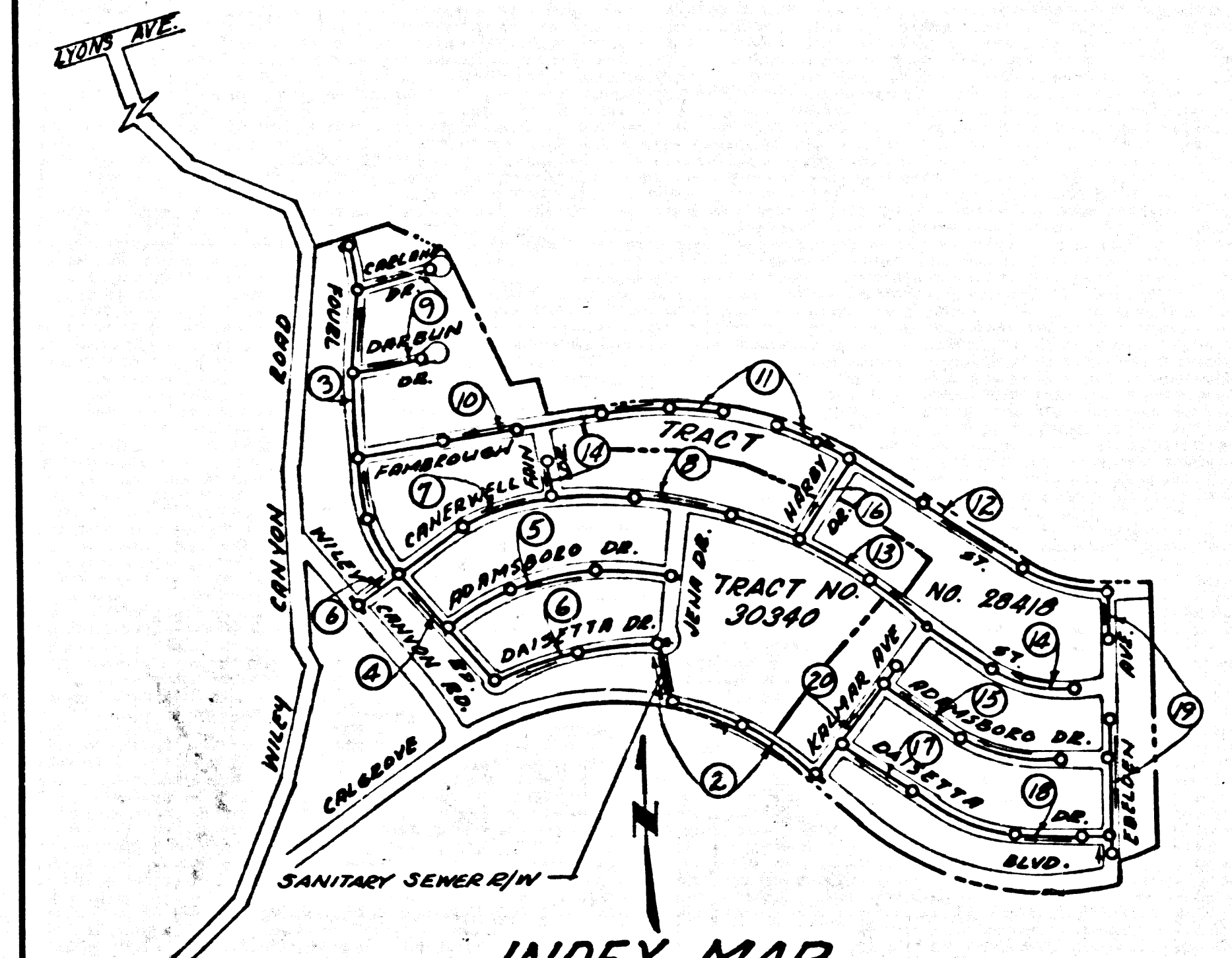
### NEWHALL BLDG. DIST. NO. 820

PROFILE ALIGNMENT AND GRADE OF P.C. 7578  
SANITARY SEWERS PAGE 1

TO BE CONSTRUCTED IN  
TRACT NO. 30340  
AND  
TRACT NO. 28418  
PRIVATE CONTRACT NO. 7578

W.S.  
10 SHEETS, 20 PAGES  
SCALE: VERT. 1"=4' HORIZ. 1"=40'  
JANUARY, 1966

PREPARED IN THE OFFICES OF  
**JENNINGS ENGINEERING CO.**  
100 S. BEVERLY DRIVE, LOS ANGELES, CALIFORNIA  
BY: *J. J. Jennings* REG. C. E. NO. 7858  
FOR LEGEND SEE PLAN NO. 51



**INDEX MAP**  
TRACTS 30340 and 28418  
P.C. 7578  
SCALE 1"=600'

Any connection to the sewage system of County Sanitation District, provided directly or indirectly by the sewers shown on these plans, shall be considered a temporary connection until all area sewered is annexed to said district, at which time the connection shall become permanent. If for any reason the annexation to the district of any area sewered hereunder is not completed, the property not in the district will be required to disconnect unless a contract is entered into with the district providing for the disposal of sewage from the area.

NO CONNECTIONS FOR THE DISPOSAL OF INDUSTRIAL WASTES SHALL BE MADE TO SEWERS SHOWN ON THESE DRAWINGS WITHOUT WRITTEN PERMISSION FROM THE CHIEF ENGINEER AND GENERAL MANAGER OF THE COUNTY SANITATION DISTRICTS.

NOTE: ISSUE NO HOUSE LATERAL PERMITS UNTIL OUTFALL SEWERS ARE BUILT.

COLLECT CHARGES AS INDICATED

*W. J. Jan 3/3/66*

- NOTES:
- PROVIDE STAKES ON THE PROPERTY LINE OR PROPERTY LINES PRODUCED AT RIGHT ANGLES TO THE SEWER LINE AT THE CENTER LINE OF EACH MANHOLE.
  - NO REPRESENTATIVE OF THE COUNTY ENGINEER WILL SURVEY OR LAY OUT ANY PORTION OF THE WORK.
  - THE PRIVATE ENGINEER SHALL FURNISH THE COUNTY ENGINEER WITH GRADE SHEETS AND STATIONING FOR HOUSE LATERALS AND Y BRANCHES AND SHALL PROVIDE STAKES FOR THEM AT THEIR PROPER LOCATIONS WITH STATIONING PLAINLY MARKED. ALL HOUSE LATERALS SHALL BE CONSTRUCTED IN A STRAIGHT ALIGNMENT AT RIGHT ANGLES FROM THE MAIN LINE SEWER EXCEPT AS SHOWN ON THE PLANS. HOUSE LATERALS FROM CHIMNEYS SHALL HAVE AN ANGLE OF LESS THAN 45° WITH THE MAIN LINE SEWER. ANY CHANGE OF ALIGNMENT SHALL BE REQUESTED IN WRITING BY THE PRIVATE ENGINEER.
  - THE PRIVATE ENGINEER SHALL FURNISH THE HOUSE LATERAL DEPTH AT PROPERTY LINE BELOW THE TOP OF CURB ELEVATION FOR EACH HOUSE LATERAL ON THE GRADE SHEET.
  - NO REVISIONS SHALL BE IN THESE PLANS WITHOUT THE APPROVAL OF THE COUNTY ENGINEER.
  - THE CONTRACTOR SHALL NOTIFY THE CONSTRUCTION DIVISION BY TELEPHONE, MADISON-4741 EXT. 6151, AT LEAST 24 HOURS BEFORE STARTING ANY WORK UNDER THIS CONTRACT.
  - MANHOLES SHALL BE BRICK STRUCTURES PER S-3 PRECAST CONCRETE MANHOLES PER S-5 MAY BE USED AS AN ALTERNATE IN LOCATIONS APPROVED BY COUNTY ENGINEER.
  - USE STANDARD MANHOLE FRAMES AND COVERS S-5 EXCEPT AS NOTED.
  - MANHOLE TOPS IN UNIMPROVED AREAS TO BE 6" ABOVE FINISHED GRADE.
  - USE EXTRA STRENGTH PIPE ALL PIPE IS STANDARD DEPTH EXCEPT AS NOTED.
  - USE MECHANICAL COMPRESSION JOINTS FOR ALL V.C.P. UNLESS PER SPEC'S, SECS. 36, 40 & 41.
  - ALL V'S TO BE CONSTRUCTED AT STATIONS AS NOTED.
  - IF A POWER POLE IS WITHIN THREE FEET OF A SEWER, THE SEWER SHALL BE ENCASED PER S-23 CASE III, TWO FEET ON EACH SIDE FROM THE POINT OF INTERFERENCE.
  - IF, DURING THE COURSE OF CONSTRUCTION IT IS DETERMINED THAT THERE IS LESS THAN FOUR FEET OF COVER OVER THE TOP OF THE MAIN LINE OR HOUSE LATERAL, SET SEWER WHICH IS NOT INDICATED ON THE PLANS, THE PIPE SHALL BE ENCASED PER S-23 CASE III, UNLESS OTHERWISE APPROVED BY THE COUNTY ENGINEER.
  - HOUSE LATERALS TO BE CONSTRUCTED WITH INVERTS AT PROPERTY LINE 6" FEET BELOW CURB GRADE EXCEPT AS NOTED.
  - RESURFACE ALL TRINCHES WITHIN PAVED AREAS TO MEET LA. COUNTY ROAD DEPT. OF CALIFORNIA STATE HIGHWAY REQUIREMENTS IN ACCORDANCE WITH PERMITS.
  - FOR ALLOWABLE LEAKAGE TEST SEE FORMULA NO. 2, SPEC'S, SEC. 54.
  - ALL STATE AND LOCAL TRENCH SAFETY ORDINANCES SHALL BE RIGIDLY ENFORCED.
  - CONSTRUCTION IN FULL AREAS:
    - AN ACCEPTABLE CERTIFICATION OF COMPACTION TEST RESULTS SHALL BE SUBMITTED TO THE CONSTRUCTION DIVISION. COMPACTION TESTS ARE TO BE MADE IN ACCORDANCE WITH A.S.T.M. STANDARD METHOD OF TEST D-698-65.
    - NO CONSTRUCTION IS PERMITTED IN FULL AREAS WHERE THE RELATIVE DENSITY OF COMPACTION IS LESS THAN 80%.
    - IF THE RELATIVE DENSITY OF COMPACTION IS LESS THAN 80% ALL MAIN LINE AND HOUSE LATERALS SHALL BE ENCASED PER S-23 OR HAVE A SPECIAL CASE COURSE PER S-23, CASE III, SPECIAL MANHOLE CASES PER S-4 ARE REQUIRED.
    - IF THE RELATIVE DENSITY OF COMPACTION IS 80% OR GREATER, THE SPECIAL SPECIALS (C) ARE NOT APPROVED BY THE COUNTY ENGINEER.
  - WORDS IN CIRCLE AT ENDS OF HOUSE LATERALS INDICATE DEPTH BELOW CURB GRADE.
  - WORDS IN CIRCLE AT ENDS OF HOUSE LATERALS INDICATE V'S SHALL BE LAID HORIZONTAL AND HOUSE LATERALS SHALL BE CONSTRUCTED WITH 1/2" RISE PER FOOT TO PROPERTY LINE.
  - JOINT BETWEEN CAST IRON PIPE AND R.C.P. PIPE SHALL BE MADE WITH A LEAKAGE COVERING AND APPROVED EQUAL.

NOTE: GRADES TO WHICH THIS IMPROVEMENT IS TO BE CONSTRUCTED ARE SHOWN ON PLANS AND PROFILES. GRADE POINTS FOR TOP OF CURB, CENTER LINE OF STREETS OR CENTER LINE OF ALLEYS ARE SHOWN BY CIRCLES ON PROFILES. AT ALL POINTS BETWEEN DESIGNATED POINTS THE GRADE SHALL BE ESTABLISHED SO AS TO CONFORM TO A STRAIGHT LINE DRAWN BETWEEN SAID DESIGNATED POINTS.

ELEVATIONS ARE IN FEET ABOVE U.S.C. & G.S. SEA LEVEL DATUM OF 1929.

THE DRAWING AND THE DATA HEREON HAVE BEEN MADE A PART OF THE SPECIFICATIONS. (AS REVISED) WORK SHALL BE CONDUCTED ACCORDING TO STANDARD SPECIFICATIONS DATED MAY 28, 1965. COPIES IN THE OFFICE OF THE COUNTY ENGINEER SHALL BE PROTECTED AGAINST THEFT AND LOSS. THE COUNTY ENGINEER'S OFFICE WILL BE RESPONSIBLE FOR THE PROTECTION OF THESE PLANS.

BEFORE WORK CAN BE STARTED, THE CONTRACTOR MUST OBTAIN A PERMIT TO FACILITY IN COUNTY STREETS FROM THE COUNTY ENGINEER'S OFFICE. THE CONTRACTOR SHALL BE RESPONSIBLE FOR THE PROTECTION OF ALL EXISTING UTILITIES AND STRUCTURES WITHIN THE LIMITS OF THE PROJECT. THIS NOTE APPLIES TO ALL PAGES.

IF WORK IS TO BE DONE IN A STATE HIGHWAY, A PERMIT MUST BE OBTAINED FROM THE STATE OF CALIFORNIA, DIVISION OF HIGHWAYS, 120 SOUTH SPRING STREET, LOS ANGELES, CALIFORNIA.

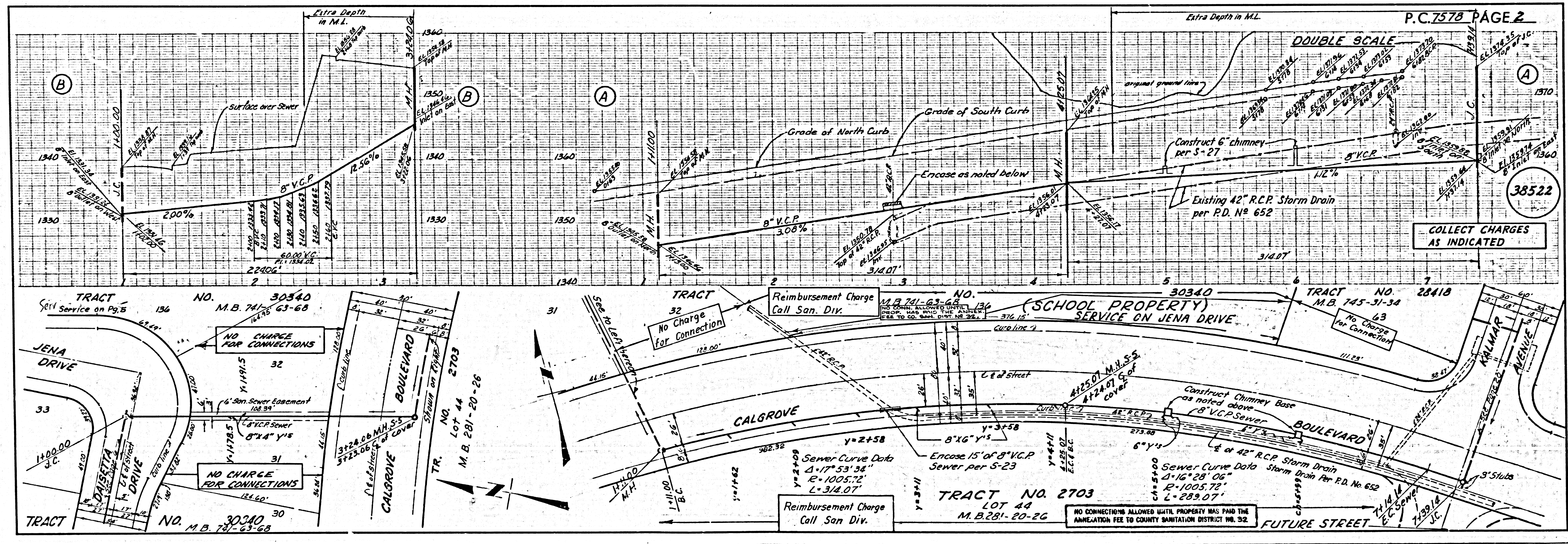
COUNTY OF LOS ANGELES, CALIFORNIA

JOHN A. LAMBE, COUNTY ENGINEER  
4. D. PARKHURST, CHIEF ENGINEER  
NO. SAN. DIST. NO. 32

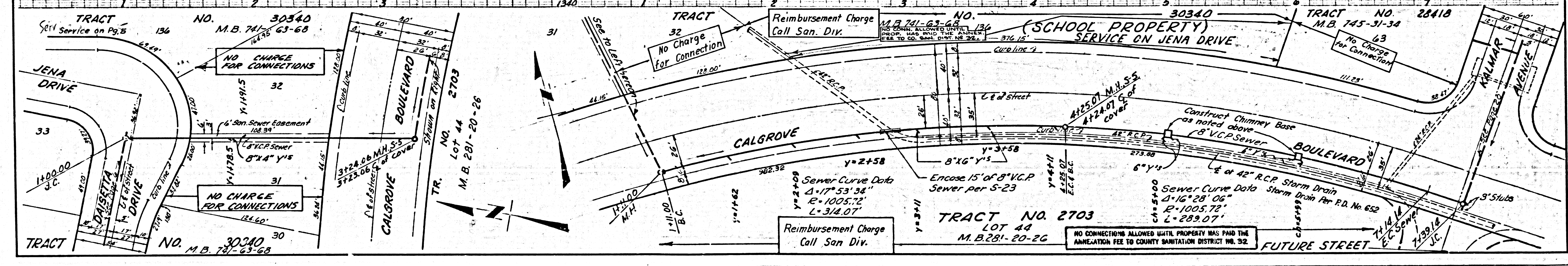
APPROVED BY: *R. S. K.* ASSISTANT SANITATION ENGINEER  
APPROVED BY: *M. J. J.* CIVIL ENGINEER

CHECKED BY: *J. F. W. Williams 3/14/66*  
REG. C.E. NO. 14280

J.N. 0367.12

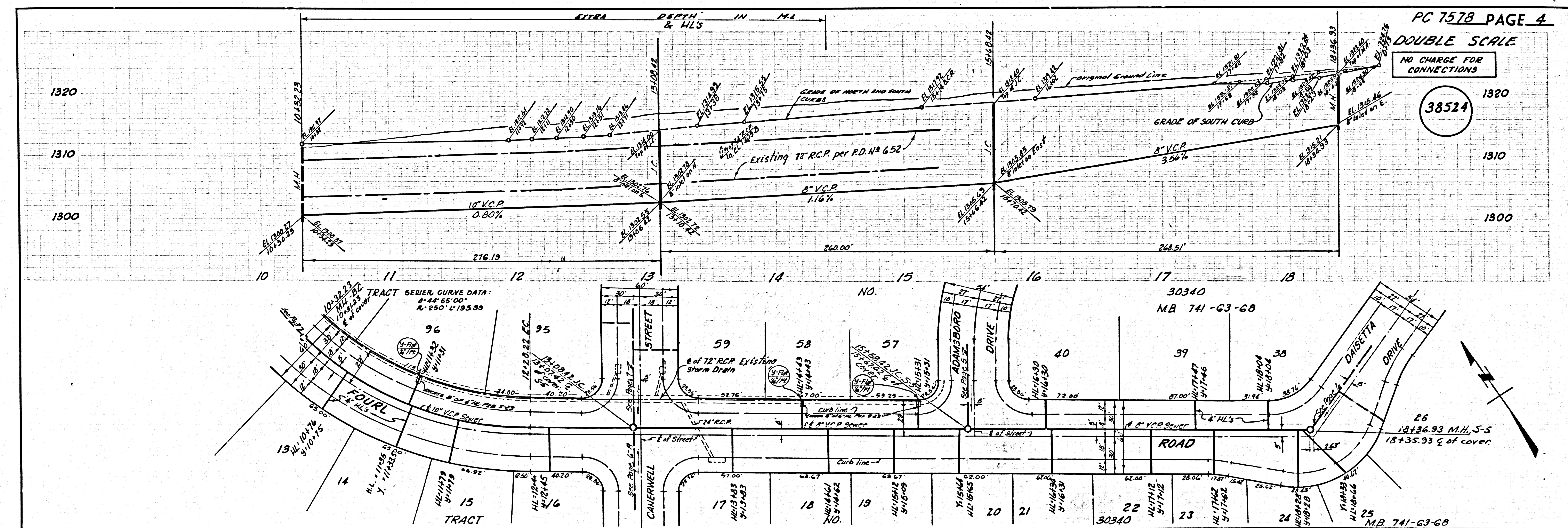
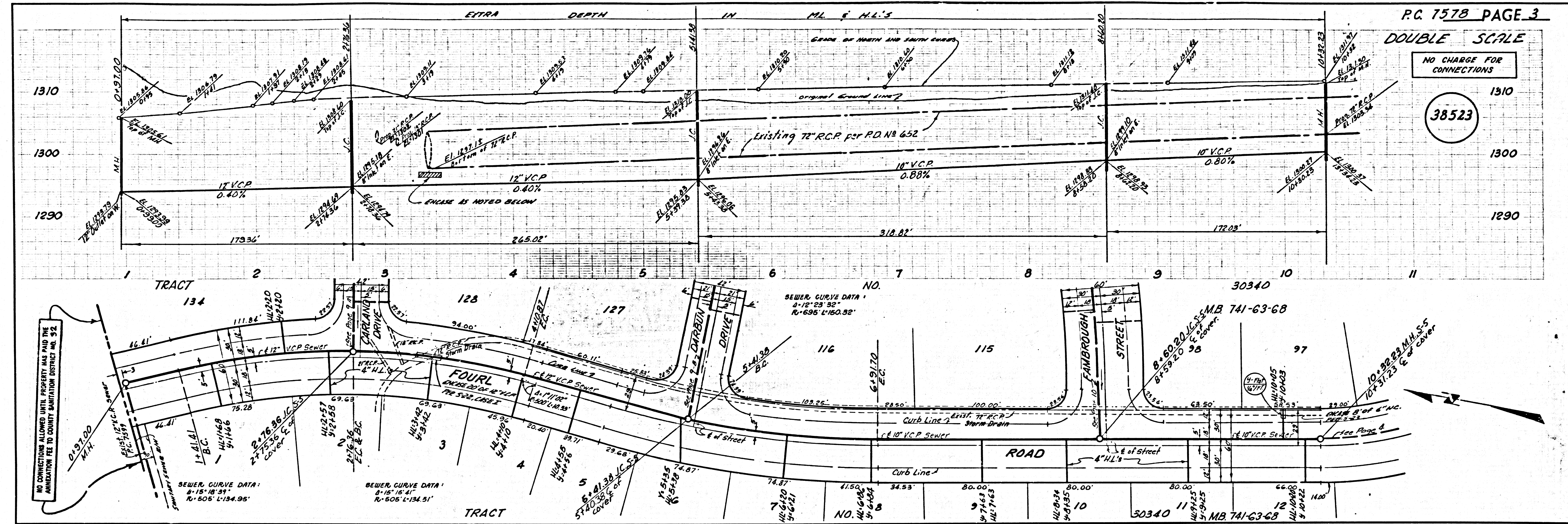


COLLECT CHARGES AS INDICATED

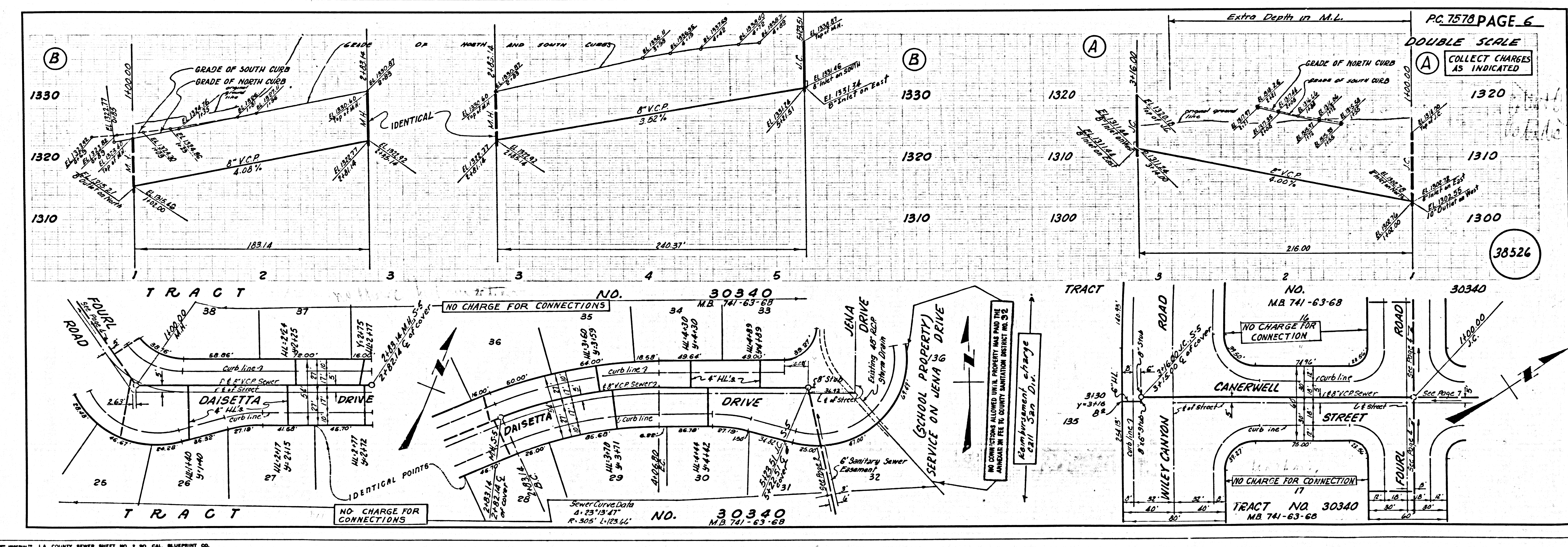
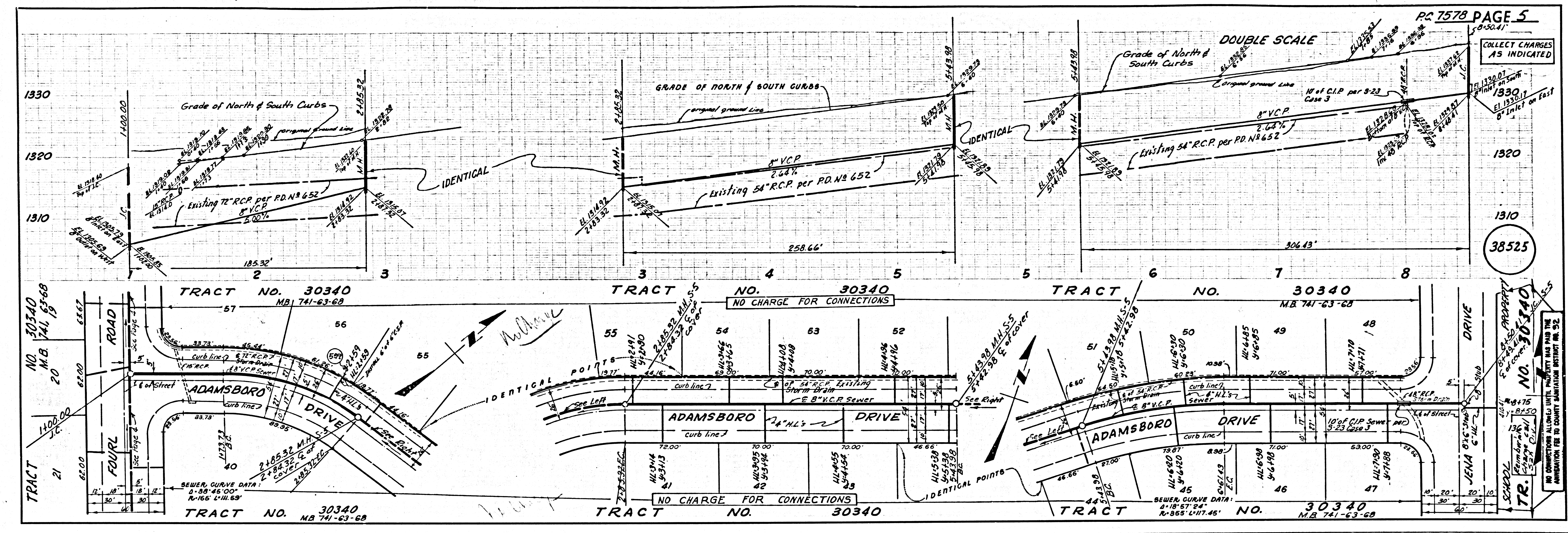


4-8 THE SAN. CAL. BLUE PRINT SHEET NO. 1

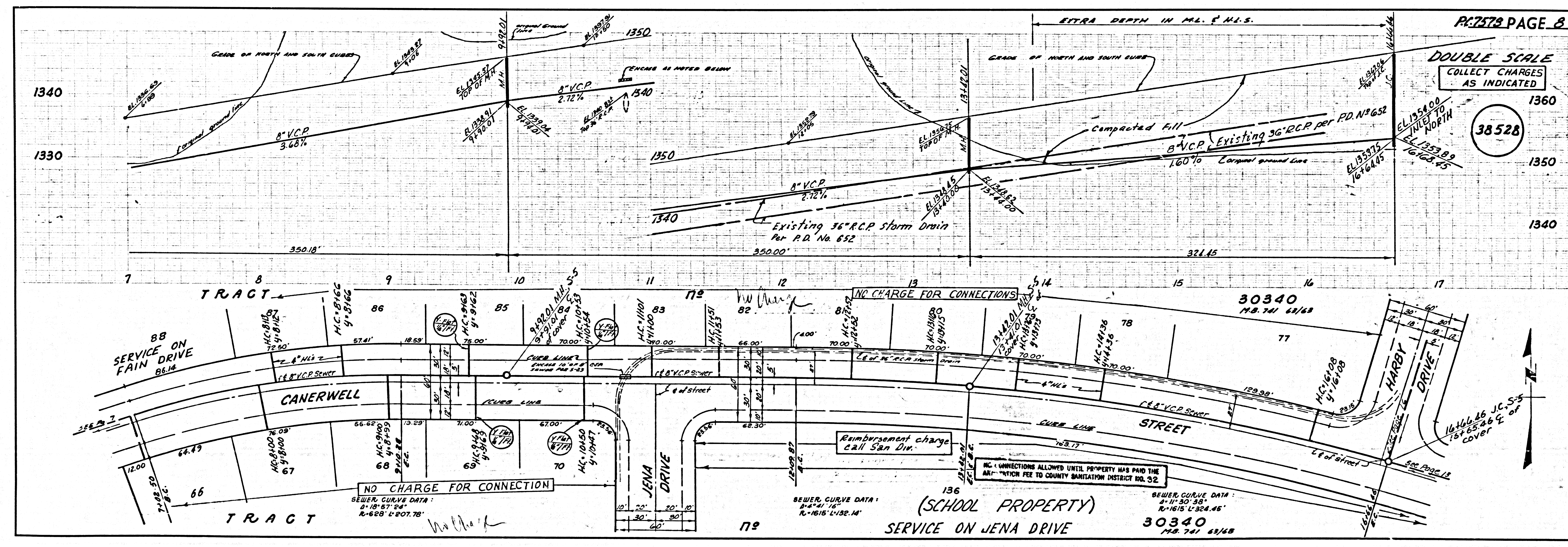
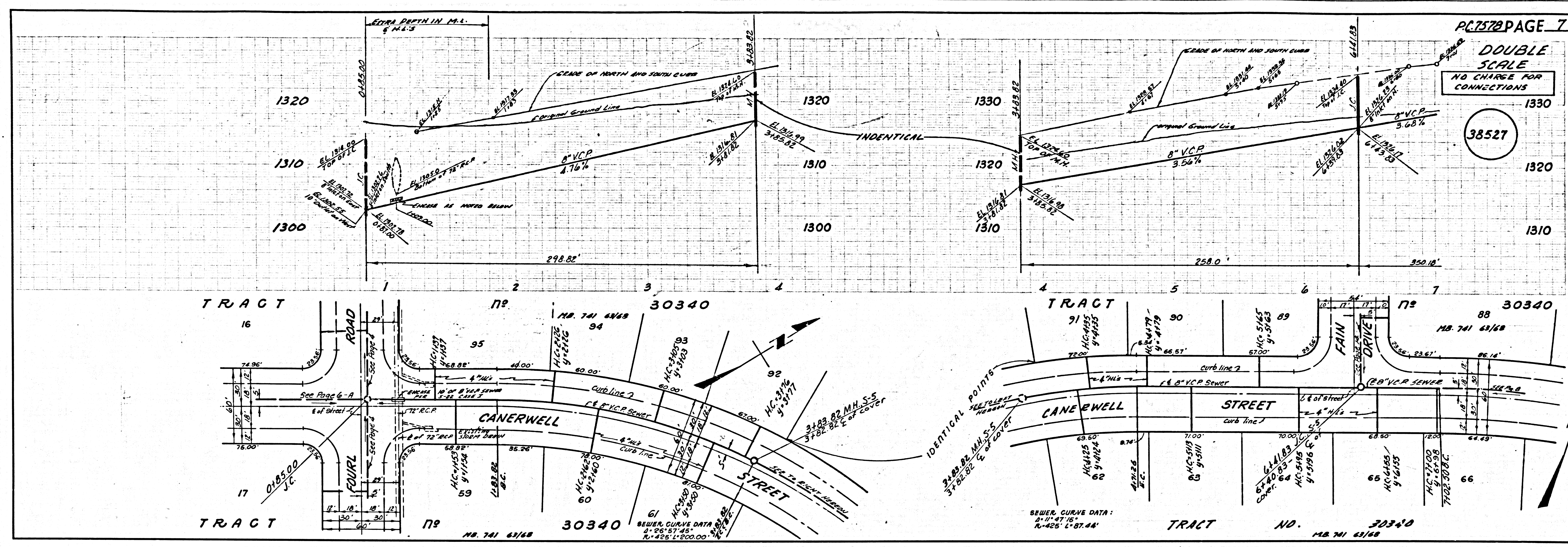




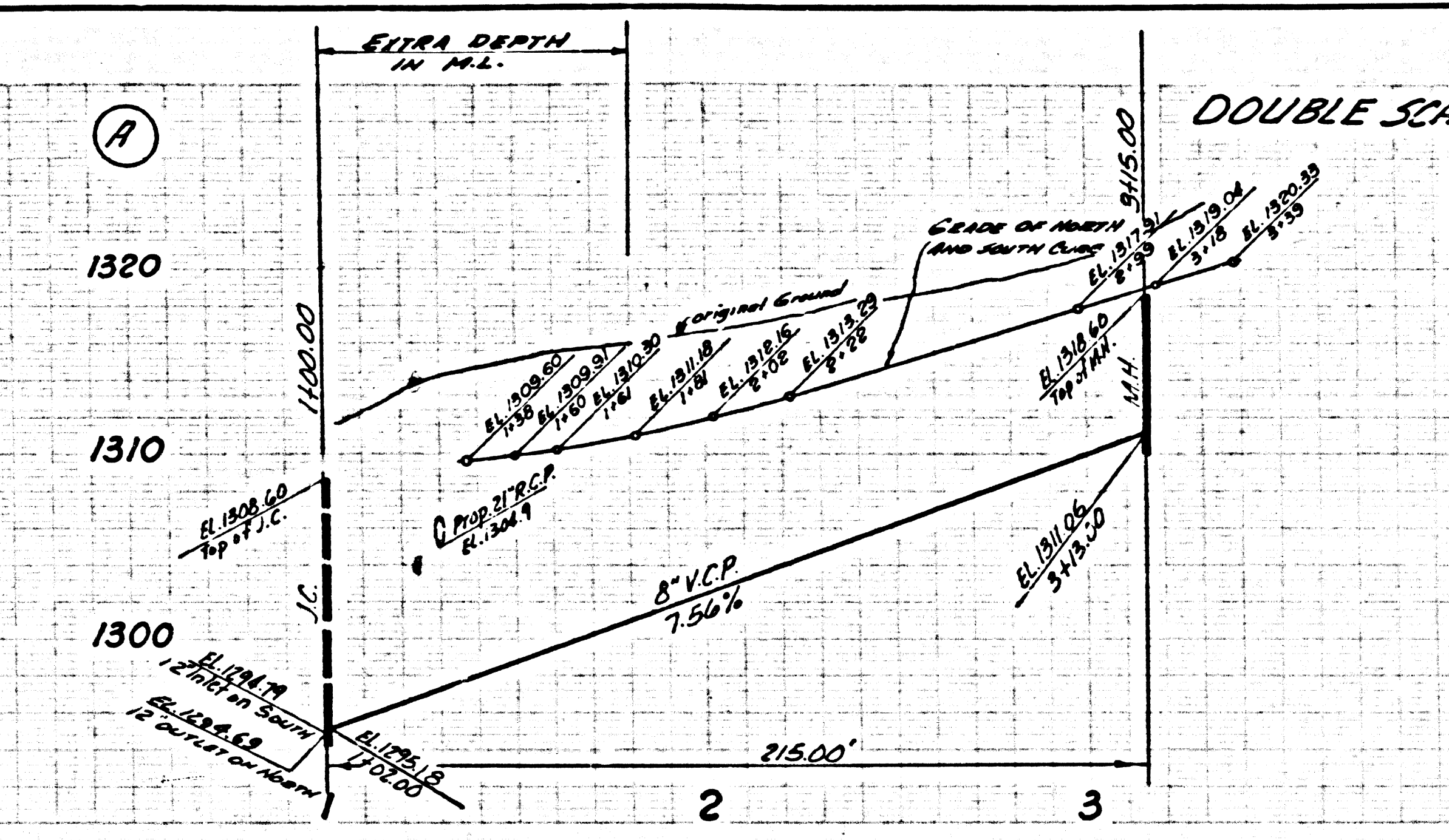
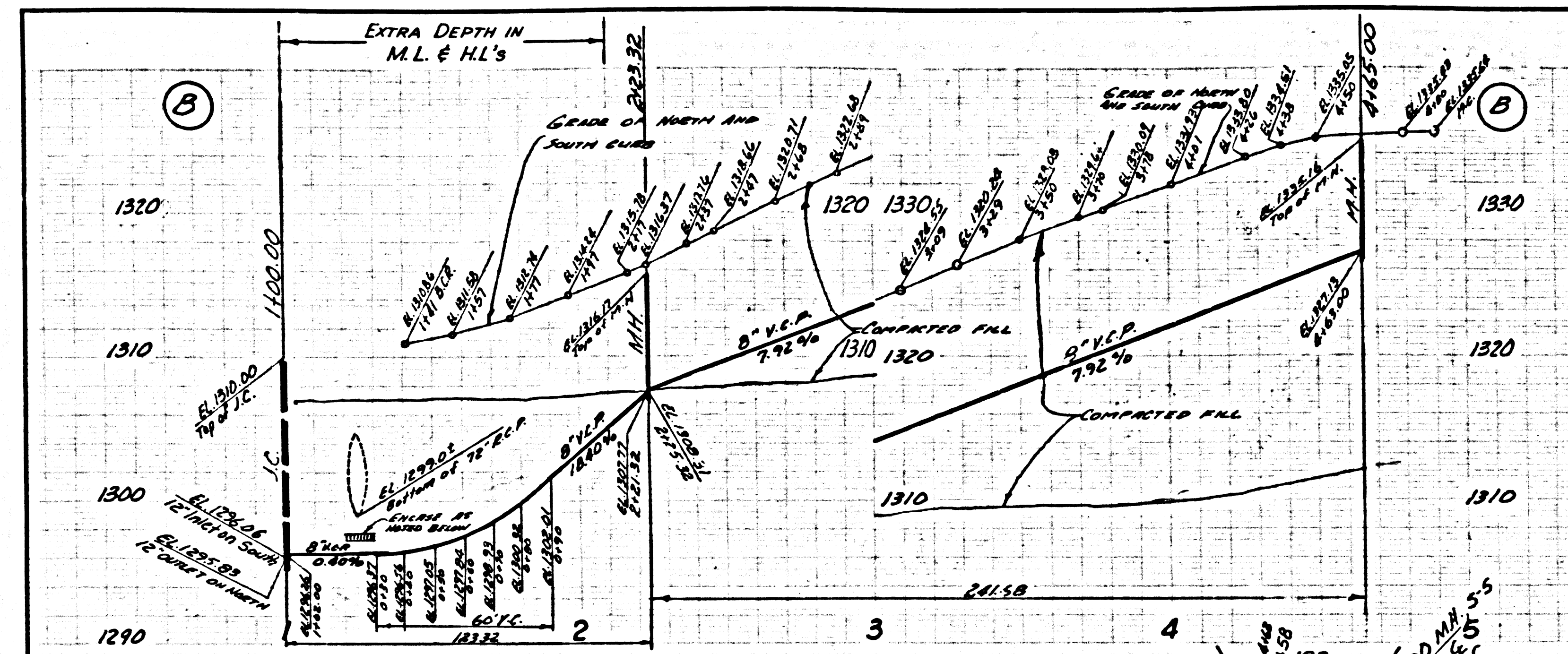




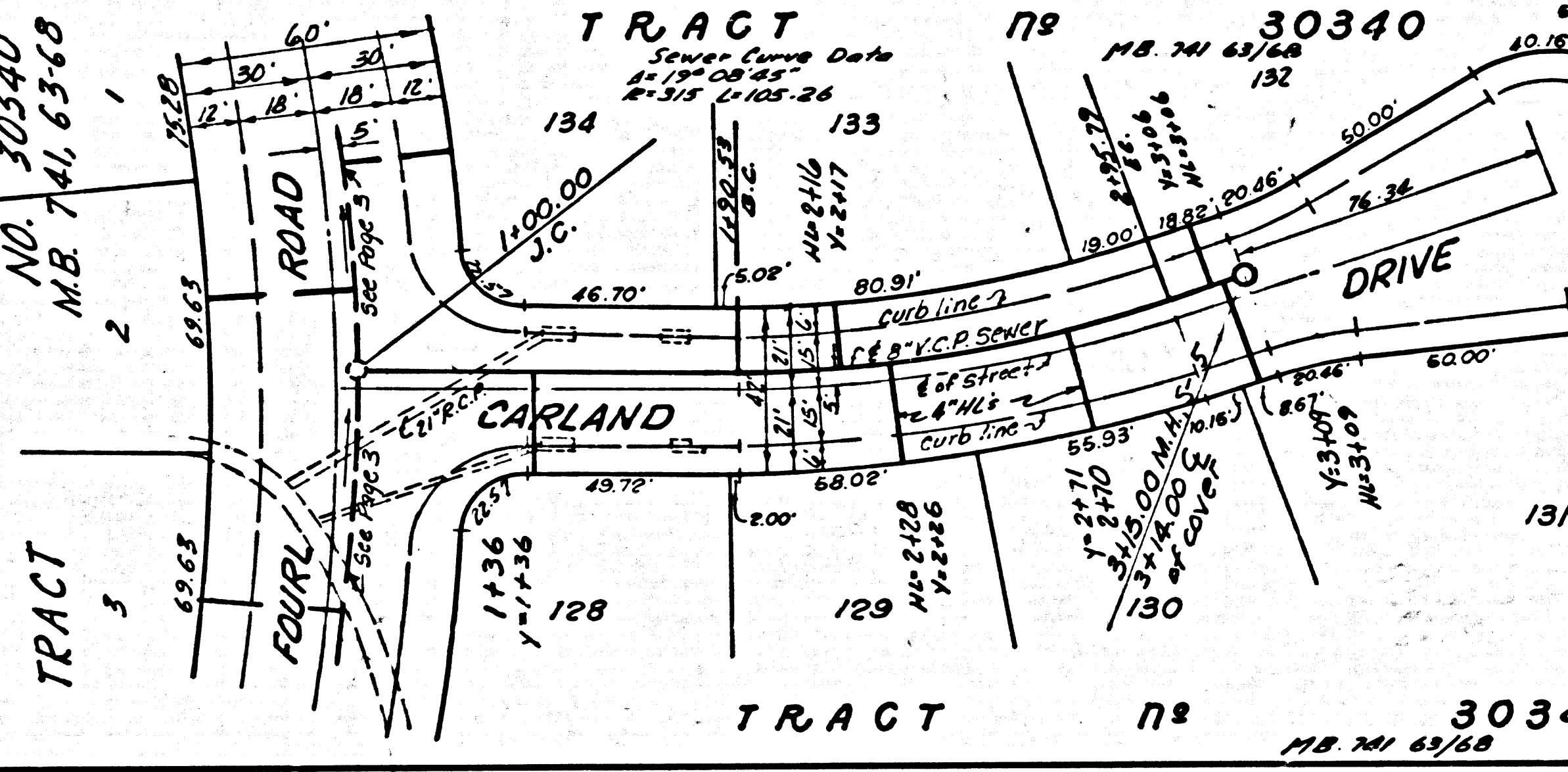
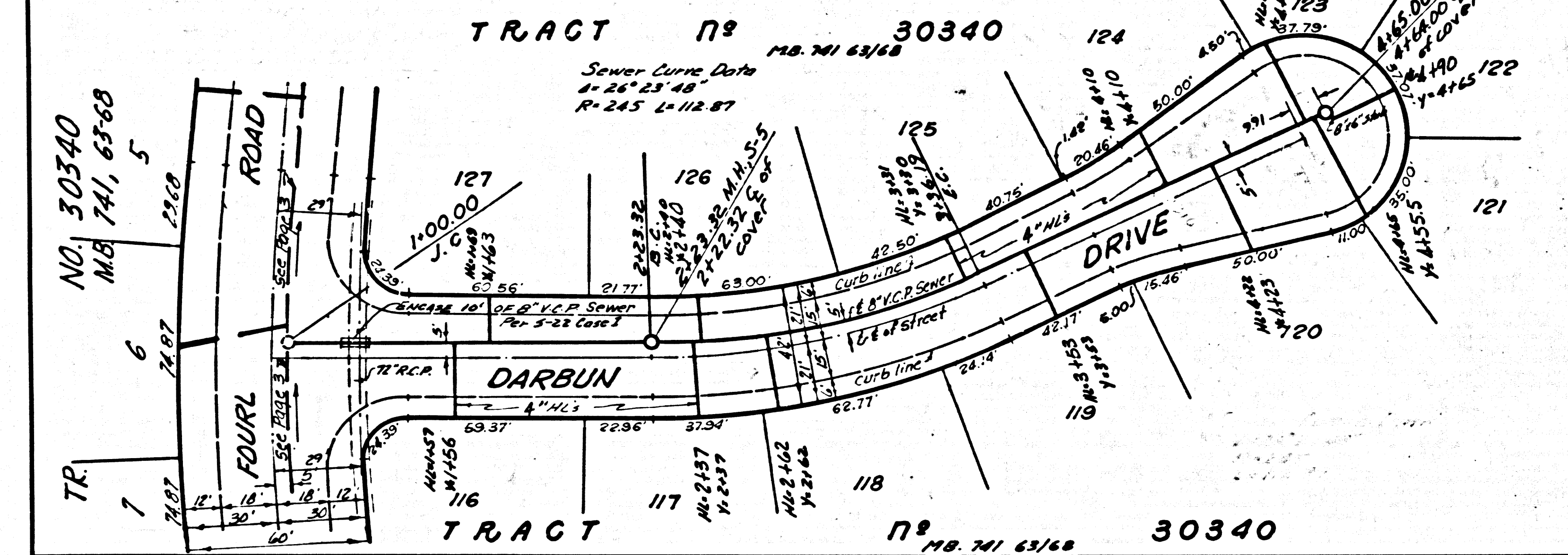




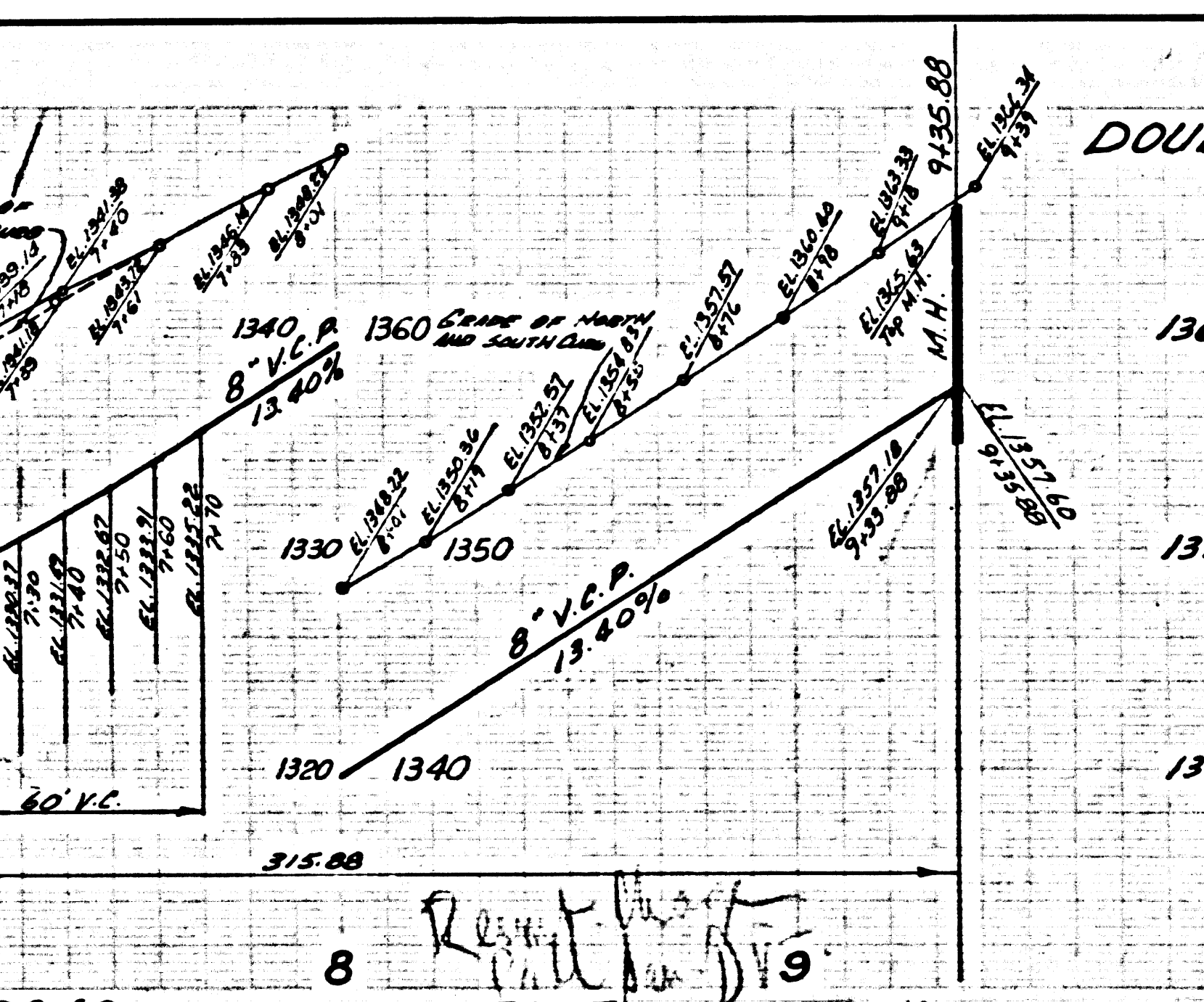
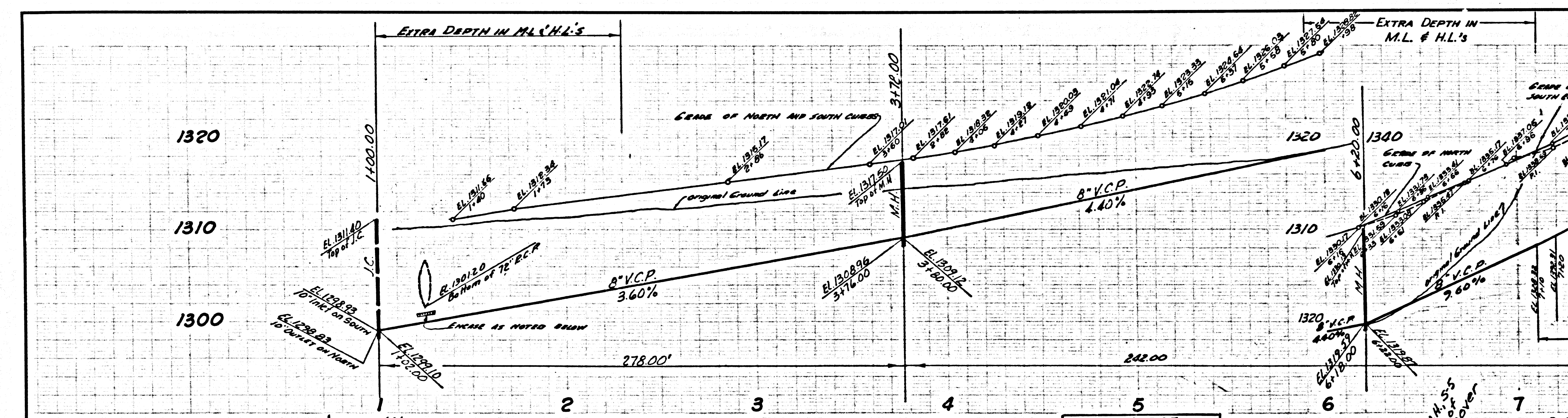




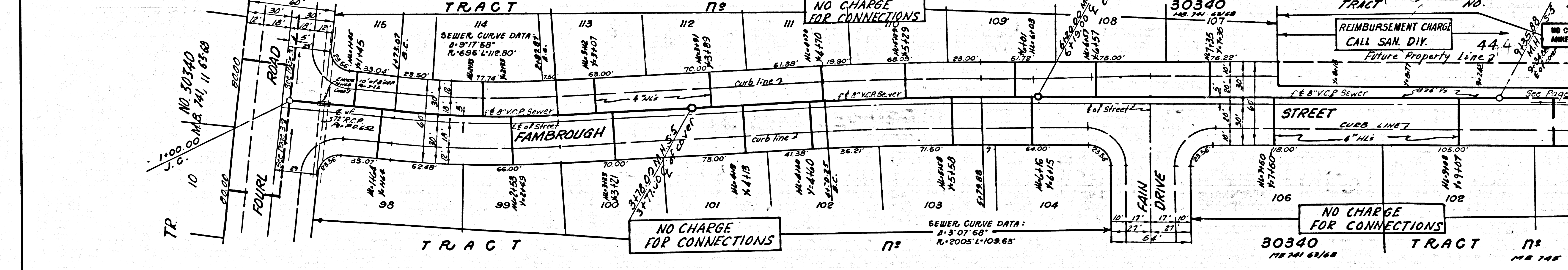
PC 757B PAGE 9  
 DOUBLE SCALE  
 NO CHARGE FOR CONNECTIONS  
 38529



NO. 30340  
 M.B. 741, 63-68  
 TRACT NO. 30340  
 M.B. 741, 63-68



PC 757B PAGE 10  
 DOUBLE SCALE  
 COLLECT CHARGES AS INDICATED  
 38530



NO CHARGE FOR CONNECTIONS  
 REIMBURSEMENT CHARGE CALL SAN. DIV. 44.4  
 FUTURE PROPERTY LINE 2  
 NO CONNECTIONS ALLOWED UNTIL PROPERTY HAS PAID THE AMMORTIZATION FEE TO COUNTY SANITATION DISTRICT NO. 3  
 TRACT NO. 28418  
 M.B. 745, 31-34



