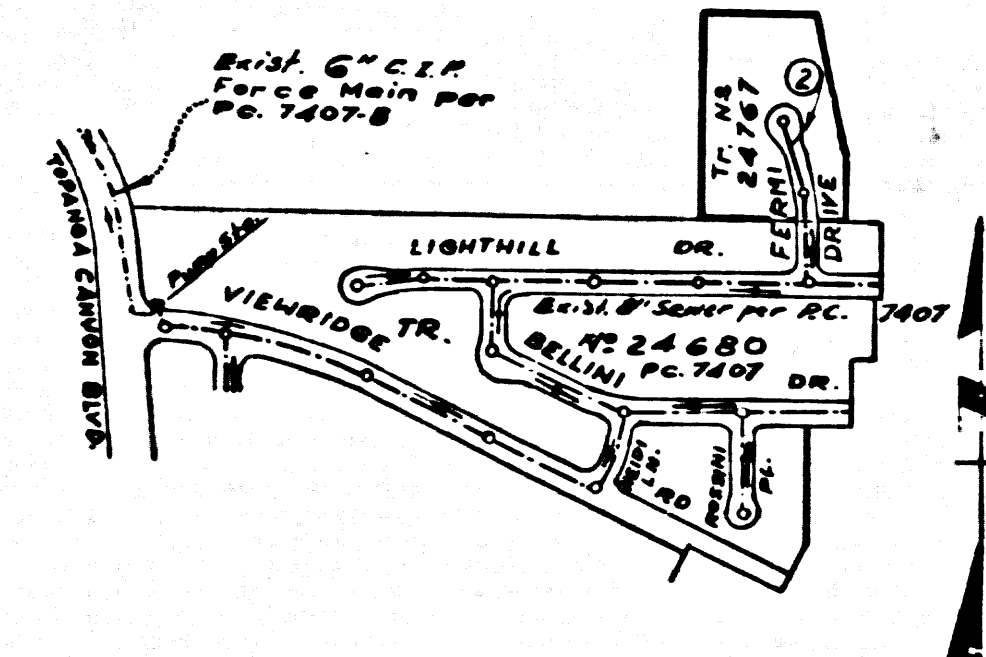


B.M. 56-16 ELEV. 1499785
 At Topanga Canyon Road summit a parking lot of "Top-O-Topanga" Beer Garden Cafe; 2.8 miles S 1/2 along Topanga Canyon Blvd. from Ventura Blvd. set a 5/8" dia. brass cap B.M. mon. mk'd "B.M. 56-161940 R.E. 5069" in conc. 11' below the surface under a cast iron cover mk'd "County Engineer" 74 0 ft. N.W. 1/4 from D.M. 1053 194 C, 50 7/8' N.W. 1/4 from fire hydr. N. 83' 58 0 ft. S.W. 1/4 from the S.W. cor. of a conc. block building and 96.0 ft. S 1/2 from the 6 1/2' cur. of main conc. block bldg.
 MALIBU QUAD. 19 64 FB-2832 P 22



INDEX MAP
 TRACT No. 24767
 SCALE: 1" = 600'
 P.C. 7581

ISSUE NO PERMITS UNTIL
 P.C. 7407 & P.C. 7407B IS
 COMPLETED & ACCEPTED.
 SEE SANITATION DIVISION

DOUBLE SCALE
 CALABASAS BLDG. DIST. NO. 91

PROFILE ALIGNMENT AND GRADE OF
 SANITARY SEWERS PAGE 1
 TO BE CONSTRUCTED IN

TRACT No. 24767
 PRIVATE CONTRACT NO. 7581

W.S. 89
 SHEET 1 OF 2 PAGES
 SCALE: 1" = 8' HORIZ. 1" = 4' VERT.
 JANUARY, 1966

PREPARED IN THE OFFICES OF
 SCOTT, BLAKE & HYNNE
 REGISTERED PROFESSIONAL ENGINEERS
 REG. C. E. NO. 9439

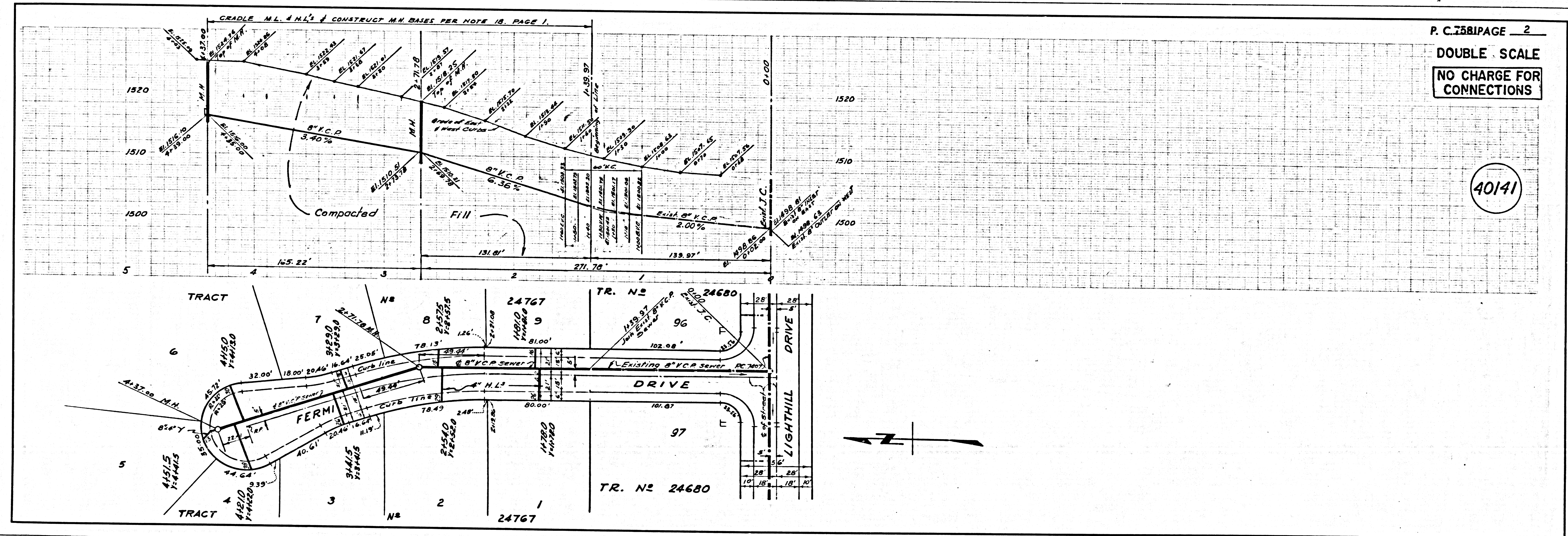
40140

- NOTES:
- PROVIDE STAKES ON THE PROPERTY LINE OR PROPERTY LINES PRODUCED AT RIGHT ANGLES TO THE SEWER LINE AT THE CENTER LINE OF EACH MANHOLE.
 - NO REPRESENTATIVE OF THE COUNTY ENGINEER WILL SURVEY OR LAY OUT ANY PORTION OF THE WORK.
 - THE PRIVATE ENGINEER SHALL FURNISH THE COUNTY ENGINEER WITH GRADE SHEETS AND STATIONING FOR ALL HOUSE LATERALS AND Y-BRANCHES AND SHALL PROVIDE STAKES FOR THEM AT THESE PROPOSED LOCATIONS WITH STATIONING PLAINLY MARKED. ALL HOUSE LATERALS SHALL BE CONSTRUCTED IN A STRAIGHT ALIGNMENT AT RIGHT ANGLES FROM THE MAIN LINE SEWER EXCEPT AS SHOWN ON THE PLANS. HOUSE LATERALS FROM CHIMNEYS SHALL NOT HAVE AN ANGLE OF LESS THAN 45° WITH THE MAIN LINE SEWER. ANY CHANGE IN ALIGNMENT SHALL BE REQUESTED IN WRITING BY THE PRIVATE ENGINEER.
 - THE PRIVATE ENGINEER SHALL FURNISH THE HOUSE LATERAL DEPTH AT THE PROPERTY LINE BELOW THE TOP OF CURB ELEVATION FOR EACH HOUSE LATERAL ON THE GRADE SHEET.
 - NO REVISIONS SHALL BE MADE IN THESE PLANS WITHOUT THE APPROVAL OF THE COUNTY ENGINEER.
 - THE CONTRACTOR SHALL NOTIFY THE CONSTRUCTION DIVISION BY TELEPHONE, MADISON 9-0747, EXT. 8848, AT LEAST TWENTY-FOUR HOURS BEFORE STARTING ANY WORK UNDER THIS CONTRACT.
 - MANHOLES SHALL BE BRICK SEWER STRUCTURES PER S-3. PRECAST CONCRETE MANHOLES PER S-5 OR S-6 OR S-7 MAY BE USED AS AN ALTERNATE IN LOCATIONS APPROVED BY THE COUNTY ENGINEER.
 - USE STANDARD MANHOLE FRAMES AND COVERS, S-1, EXCEPT AS NOTED.
 - MANHOLE TOPS IN UNIMPROVED AREAS OF WAY TO BE SIX INCHES ABOVE FINISHED GRADE.
 - USE EXTRA STRENGTH PIPE. ALL PIPE IS STANDARD DEPTH EXCEPT AS NOTED.
 - USE MECHANICAL COMPRESSION JOINTS FOR ALL V.C.P. JOINTS PER SPEC., SECS. 24 & 46 & 49.
 - WHERE OVER CROSSLING WARE IS ENCOUNTERED DURING THE CONSTRUCTION OF THE SEWERS, THE V.C.P. JOINTS SHALL BE OF POINT COMPOUND PER SPEC., SECS. 48 & 49, OR MECHANICAL COMPRESSION JOINTS PER SPEC., SEC. 54.
 - IF A POWER POLE IS WITHIN THREE FEET OF THE SEWER, THE SEWER SHALL BE ENCASED, PER S-23, TWO FEET ON EACH SIDE FROM THE POINT OF INTERFERENCE.
 - IF DURING THE COURSE OF CONSTRUCTION IT IS DETERMINED THAT THERE IS LESS THAN FOUR FEET OF COVER OVER THE TOP OF A MAIN LINE OR HOUSE LATERAL V.C.P. SEWER WHICH IS NOT INDICATED ON THE PLANS, THE PIPE SHALL BE ENCASED PER S-23 UNLESS OTHERWISE APPROVED BY THE COUNTY ENGINEER.
 - HOUSE LATERALS TO BE CONSTRUCTED WITH INVERTS AT PROPERTY LINE, EXCEPT AS NOTED.
 - INDICATE ALL TRENCHES WITHIN FAYED AREAS TO MEET L.A. COUNTY ROAD DEPT. OR CALIFORNIA STATE HIGHWAY REQUIREMENTS IN ACCORDANCE WITH PERMITS.
 - FOR ALLOWABLE LEAKAGE TEST USE FORMULA NO. 1, PER SPEC., SEC. 64.
 - CO) AN ACCEPTABLE CERTIFICATION OF COMPACTION TEST RESULTS SHALL BE SUBMITTED TO THE CONSTRUCTION DIVISION. DIVISION CONSTRUCTION TESTS ARE TO BE MADE IN ACCORDANCE WITH A.S.T.M. STANDARD METHOD OF TEST D-493-46T. CO) NO CONSTRUCTION IS PERMITTED IN FILL AREAS WHERE THE RELATIVE DENSITY OF COMPACTION IS LESS THAN 80%. CO) IF THE RELATIVE DENSITY OF COMPACTION IS LESS THAN 90%, ALL MAIN LINE SEWER 24" HOUSE LATERALS SHALL BE GRADED PER S-23 OR HAVE A SPECIAL BASE COURSE PER S-21, CASE II, SPECIAL N.H. BASES PER S-24 ARE REQUIRED. CO) IF THE RELATIVE DENSITY OF COMPACTION IS 90% OR GREATER, THE SPECIALS IN CO) ARE NOT REQUIRED.
 - ALL STATE & LOCAL TRENCH SAFETY ORDERS WILL BE RIGIDLY ENFORCED.

NOTES:
 GRADES TO WHICH THIS IMPROVEMENT IS TO BE CONSTRUCTED ARE SHOWN ON PLANS AND PROFILE. GRADE POINTS FOR TOP OF CURB, CENTER LINE OF STREETS, OR CENTER LINE OF ALLEYS ARE SHOWN BY CIRCLES ON PROFILES AT ALL POINTS BETWEEN DESIGNATED ELEVATIONS ARE IN FEET ABOVE U.S.C. & G.S. MEAN SEA LEVEL, DATUM OF 1929.
 THE EXISTING AND THE DATA HEREON ARE HEREBY MADE A PART OF THE SPECIFICATIONS.
 WORK SHALL BE CONSTRUCTED ACCORDING TO STANDARD SPECIFICATIONS DATED JULY 22, 1952, ON FILE IN THE OFFICE OF THE COUNTY ENGINEER AND SHALL BE PROSECUTED ONLY IN THE PRESENCE OF THE COUNTY ENGINEER.
 BEFORE WORK CAN BE STARTED, THE CONTRACTOR MUST OBTAIN A PERMIT TO OCCUPY IN COUNTY STREETS FROM THE L.A. COUNTY ROAD DEPT. DISTRICT OFFICE NO. 1000 WEST SECOND STREET, LOS ANGELES, CALIFORNIA, ROOM 300. COUNTY ENGINEERING HOLDING CONSTRUCTION INSPECTION AND RECORD PLANS.
 APPROVAL OF THIS PLAN BY THE COUNTY OF LOS ANGELES DOES NOT CONSTITUTE A REPRESENTATION AS TO THE ACCURACY OF THE LOCATION OF OR THE EXISTENCE OR NON-EXISTENCE OF ANY UNDERGROUND UTILITY PIPE, OR STRUCTURE WITHIN THE LIMITS OF THIS PROJECT. THIS NOTE APPLIES TO ALL PAGES.
 IF WORK IS TO BE DONE IN A STATE HIGHWAY, A PERMIT MUST BE OBTAINED FROM THE STATE OF CALIFORNIA, DIVISION OF HIGHWAYS, 128 SOUTH SPRING STREET, LOS ANGELES, CALIFORNIA.

COUNTY OF LOS ANGELES, CALIFORNIA
 JOHN A. LAMBIE, COUNTY ENGINEER
 LAS VIRGENES MUNICIPAL WATER DISTRICT
 APPROVED BY: [Signature] ASSISTANT SANITATION ENGINEER
 APPROVED BY: [Signature] OFFICE ENGINEER
 SUBMITTED BY: [Signature] REGIONAL ENGINEER
 CHECKED BY: [Signature] REG. C.E. NO. 10553

J.N. 0367.15



P. C. 7581 PAGE 2
 DOUBLE SCALE
 NO CHARGE FOR CONNECTIONS

40141