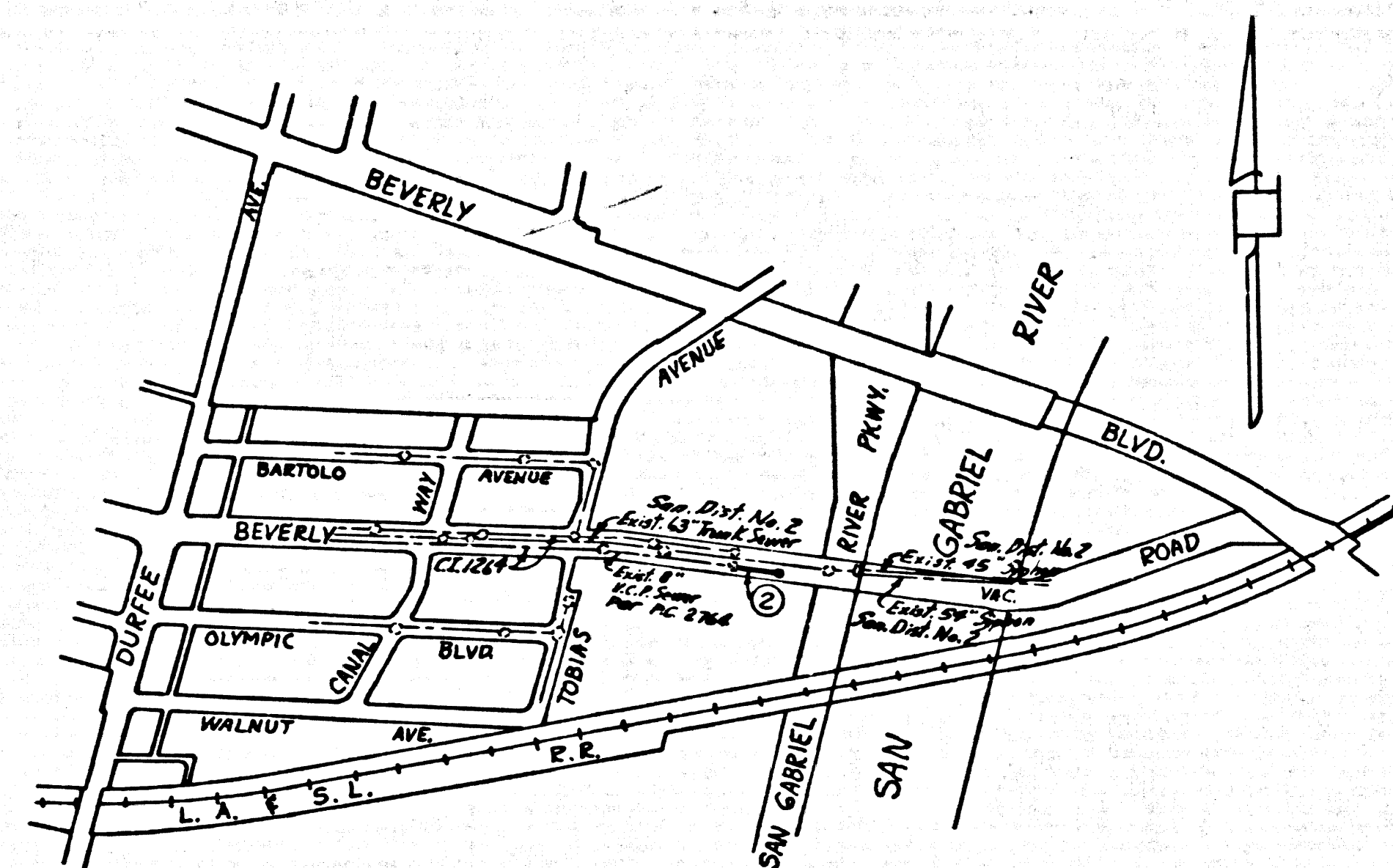


B.M. BY 2493 ELEV. 182.658  
 Sol. L. B. nail in W. & S. Diverge Ave. 5.25' S. of rd. int. @ S.W. cor. Diverge Ave. & Beverly Blvd. 75.5' S. of S. edge of N. drive to Main. Gas Str. 1924 E. Diverge Blvd.  
 RIVERA QUAD. 1965



INDEX MAP  
 SCALE: 1" = 600'  
 P.C. 7586  
 BEVERLY ROAD

PRIVATE ENGINEERS NOTICE TO CONTRACTOR  
 It shall be the responsibility of the Contractor to locate all utilities at every station whether shown herein or not and to protect them from damage. The Contractor shall bear the total cost of repair or replacement of said utilities damaged by operations in connection with the prosecution of the work.

PICO RIVERA BLDG. DIST. NO. 11.01

- NOTES:
- PROVIDE STAKES ON THE PROPERTY LINE OR PROPERTY LINES PRODUCED AT RIGHT ANGLES TO THE SEWER LINE AT THE CENTER LINE OF EACH MANHOLE.
  - NO REPRESENTATIVE OF THE CITY ENGINEER WILL SURVEY OR LAY OUT ANY PORTION OF THE WORK.
  - THE PRIVATE ENGINEER SHALL FURNISH THE CITY ENGINEER WITH GRADE SHEETS AND STATIONING FOR ALL HOUSE LATERALS AND "T" BRANCHES AND SHALL PROVIDE STAKES FOR THEM AT THEIR PROPER LOCATIONS WITH STATIONING PLAINLY MARKED. ALL HOUSE LATERALS SHALL BE CONSTRUCTED IN A STRAIGHT ALIGNMENT AT RIGHT ANGLES FROM THE MAIN LINE SEWER EXCEPT AS SHOWN ON THE PLANS. HOUSE LATERALS FROM CHIMNEYS SHALL NOT HAVE AN ANGLE OF LESS THAN 45° WITH THE MAIN LINE SEWER. ANY CHANGE IN ALIGNMENT SHALL BE REQUESTED IN WRITING BY THE PRIVATE ENGINEER.
  - THE PRIVATE ENGINEER SHALL FURNISH THE HOUSE LATERAL DEPTH AT THE PROPERTY LINE BELOW THE TOP OF CURB ELEVATION FOR EACH HOUSE LATERAL ON THE GRADE STREET.
  - NO REVISIONS SHALL BE MADE IN THESE PLANS WITHOUT THE APPROVAL OF THE CITY ENGINEER.
  - THE CONTRACTOR SHALL NOTIFY THE CONSTRUCTION DIVISION BY TELEPHONE, MADISON 5-6707, EXT. 81581, AT LEAST TWENTY-FOUR HOURS BEFORE STARTING ANY WORK UNDER THIS CONTRACT.
  - MANHOLES SHALL BE BRICK SEWER STRUCTURES PER S-5.
  - USE STANDARD MANHOLE FRAMES AND COVERS, S-18, EXCEPT AS NOTED.
  - MANHOLE TOPS IN UNIMPROVED RIGHTS-OF-WAY TO BE SIX INCHES ABOVE FINISHED GRADE.
  - USE EXTRA STRENGTH PIPE. ALL PIPE IS STANDARD DEPTH EXCEPT AS NOTED.
  - USE MECHANICAL COMPRESSION JOINTS FOR ALL V.C.P. JOINTS PER SPECS., SECS. 36, 46 & 49.
  - IF A POWER POLE IS WITHIN THREE FEET OF THE SEWER, THE SEWER SHALL BE ENCASED, PER S-25, TWO FEET ON EACH SIDE FROM THE POINT OF INTERFERENCE.
  - IF DURING THE COURSE OF CONSTRUCTION IT IS DETERMINED THAT THERE IS LESS THAN FOUR FEET OF COVER OVER THE TOP OF A MAIN LINE OR HOUSE LATERAL V.C.P. SEWER WHICH IS NOT INDICATED ON THE PLANS, THE PIPE SHALL BE ENCASED PER S-25, UNLESS OTHERWISE APPROVED BY THE CITY ENGINEER.
  - HOUSE LATERALS TO BE CONSTRUCTED WITH INVERTS AT 1/8" RISE PER FOOT TO THE PROPERTY LINE.
  - RESURFACE ALL TRENCHES WITHIN PAVED AREAS TO MEET L.A. COUNTY ROAD DEPT. OR CALIFORNIA STATE HIGHWAY REQUIREMENTS IN ACCORDANCE WITH PERMITS.
  - FOR ALLOWANCE MESSAGE PERMITS USE FORMULA NO. 8, SPEC. L, SEC. 54.
  - ALL STATE AND LOCAL TRENCH SAFETY ORDINANCES SHALL BE STRICTLY ENFORCED.
  - THE CONTRACTOR SHALL PROVIDE TRAFFIC CONTROL DURING CONSTRUCTION AS ARRANGED WITH THE CITY OF PICO RIVERA BEFORE CONSTRUCTION IS STARTED. HE SHALL ALSO POST ROAD WITH THE CITY OF PICO RIVERA SUFFICIENT TO COVER THE COST OF THIS TRAFFIC CONTROL.

NO CONNECTIONS FOR THE DISPOSAL OF INDUSTRIAL WASTES SHALL BE MADE TO SEWERS SHOWN ON THESE DRAWINGS WITHOUT WRITTEN PERMISSION FROM THE CHIEF ENGINEER AND GENERAL MANAGER OF THE COUNTY SANITATION DISTRICTS.

COLLECT CHARGES AS INDICATED

APPROVED:  
 Robert A. Mearns  
 Industrial Waste Division

PROFILE, ALIGNMENT AND GRADE OF P.C. 7586

SANITARY SEWERS PAGE 1

TO BE CONSTRUCTED IN  
 BEVERLY ROAD

PRIVATE CONTRACT NO. 7586

W.S. 37  
 1 SHEET, 2 PAGES

SCALE: VERT. 1" = 4' HORIZ. 1" = 40' FEBRUARY, 1966

PREPARED IN THE OFFICES OF

G. A. MOLINA engineers consultants

38777

By: *G. A. Molina*  
 REG. C. E. NO. 14004

FOR LEGEND SEE PLAN NO. S-1

NOTE:  
 GRADES TO WHICH THIS IMPROVEMENT IS TO BE CONSTRUCTED ARE SHOWN ON PLANS AND PROFILES. GRADE POINTS FOR TOP OF CURB, CENTER LINE OF STREET, OR CENTER LINE OF ALLEY ARE SHOWN BY CIRCLES ON PROFILES. AT ALL POINTS BETWEEN INDICATED POINTS THE GRADE SHALL BE ESTABLISHED SO AS TO CONFORM TO A STRAIGHT LINE DRAWN BETWEEN SAID DESIGNATED POINTS. ELEVATIONS ARE IN FEET ABOVE U.S.C. & G.S. SEA LEVEL UNLESS OTHERWISE NOTED.  
 THE DRAWING AND THE DATA HEREON ARE HEREBY MADE A PART OF THE SPECIFICATIONS.  
 WORK SHALL BE CONSTRUCTED ACCORDING TO STANDARD SPECIFICATIONS DATED 10/21/55, FILED IN THE OFFICE OF THE CITY ENGINEER AND SHALL BE PROSECUTED ONLY IN THE PRESENCE OF THE CITY ENGINEER.  
 BEFORE WORK CAN BE STARTED, THE CONTRACTOR MUST OBTAIN A PERMIT TO LOCATE IN COUNTY STREETS FROM THE L.A. COUNTY ROAD DEPT., DISTRICT OFFICE NO. 11, AND MAKE A DEPOSIT WITH THE CITY OF PICO RIVERA, 645 PINEWOOD BLVD., IN AMOUNT TO COVER THE COST OF CONSTRUCTION INSPECTION AND RECORD PLANS.  
 APPROVAL OF THIS PLAN BY THE CITY OF PICO RIVERA DOES NOT CONSTITUTE A REPRESENTATION AS TO THE ACCURACY OF THE LOCATION OF OR THE EXISTENCE OR NON-EXISTENCE OF ANY UNDERGROUND UTILITY PIPE, OR STRUCTURE WITHIN THE LIMITS OF THIS PROJECT. THIS NOTE APPLIES TO ALL PAGES.  
 IF WORK IS TO BE DONE IN A STATE HIGHWAY, A PERMIT MUST BE OBTAINED FROM THE STATE OF CALIFORNIA, DIVISION OF HIGHWAYS, 126 SOUTH SPRING STREET, LOS ANGELES, CALIFORNIA.

CITY OF PICO RIVERA, CALIFORNIA

JOHN A. LAMBIE, CITY ENGINEER J. D. PARKHURST, CHIEF ENGINEER

APPROVED BY: *John A. Lambie* APPROVED BY: *J. D. Parkhurst*

SUBMITTED BY: *Robert A. Mearns* 105 CERRITOS INDUSTRIAL ENGINEERS, P.O. BOX 27

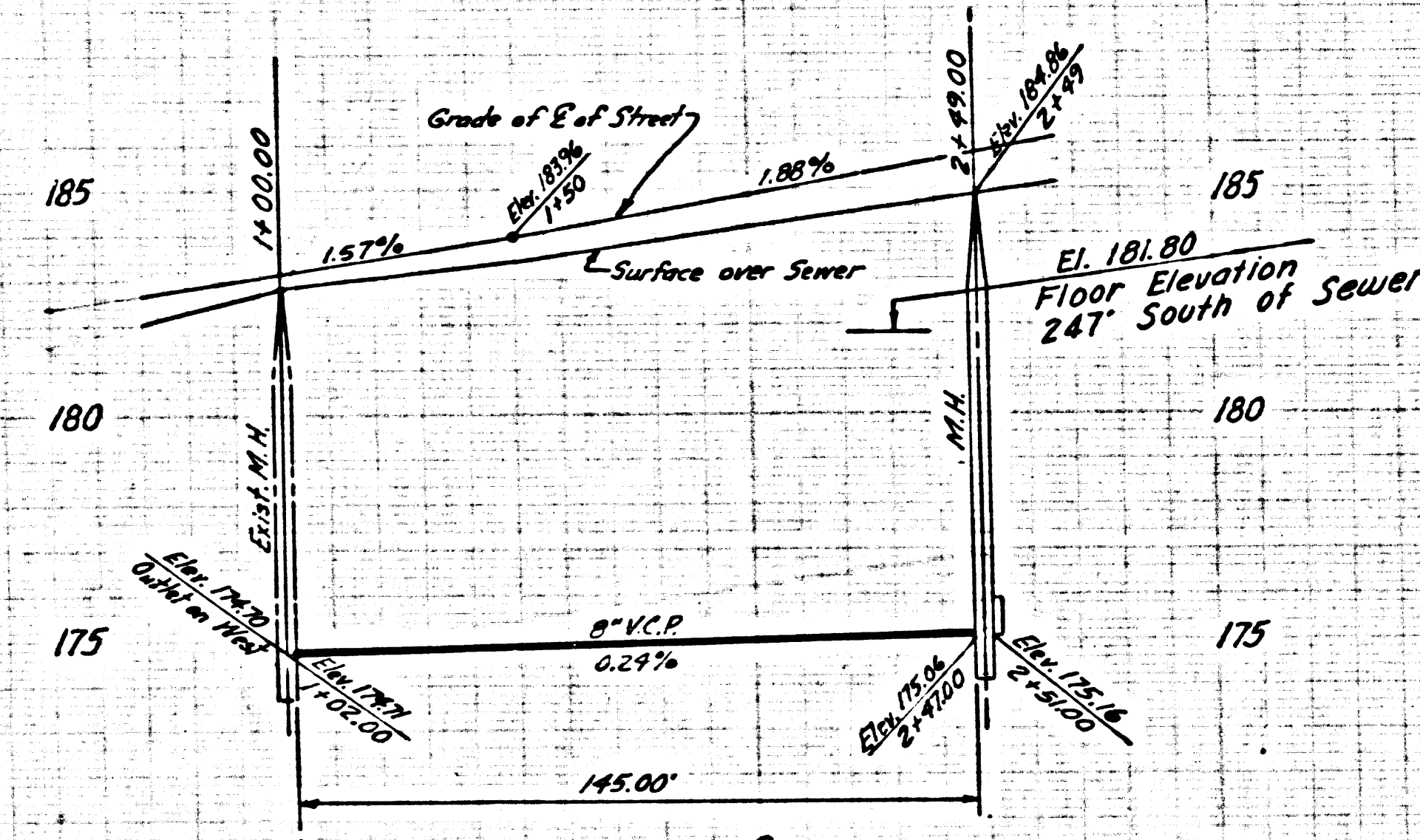
CHECKED BY: *Robert A. Mearns* REG. C.E. NO. 15931

Approved: *Robert A. Mearns*  
 City of Pico Rivera

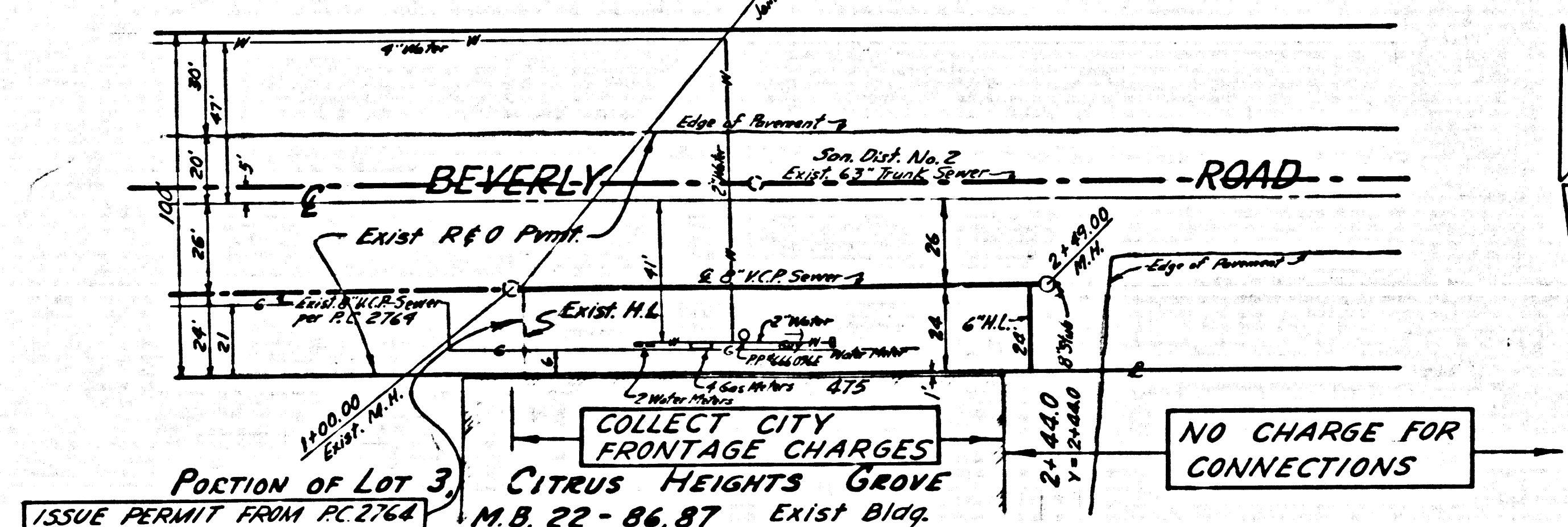
P. C. 7586 PAGE 2

COLLECT CHARGES AS INDICATED

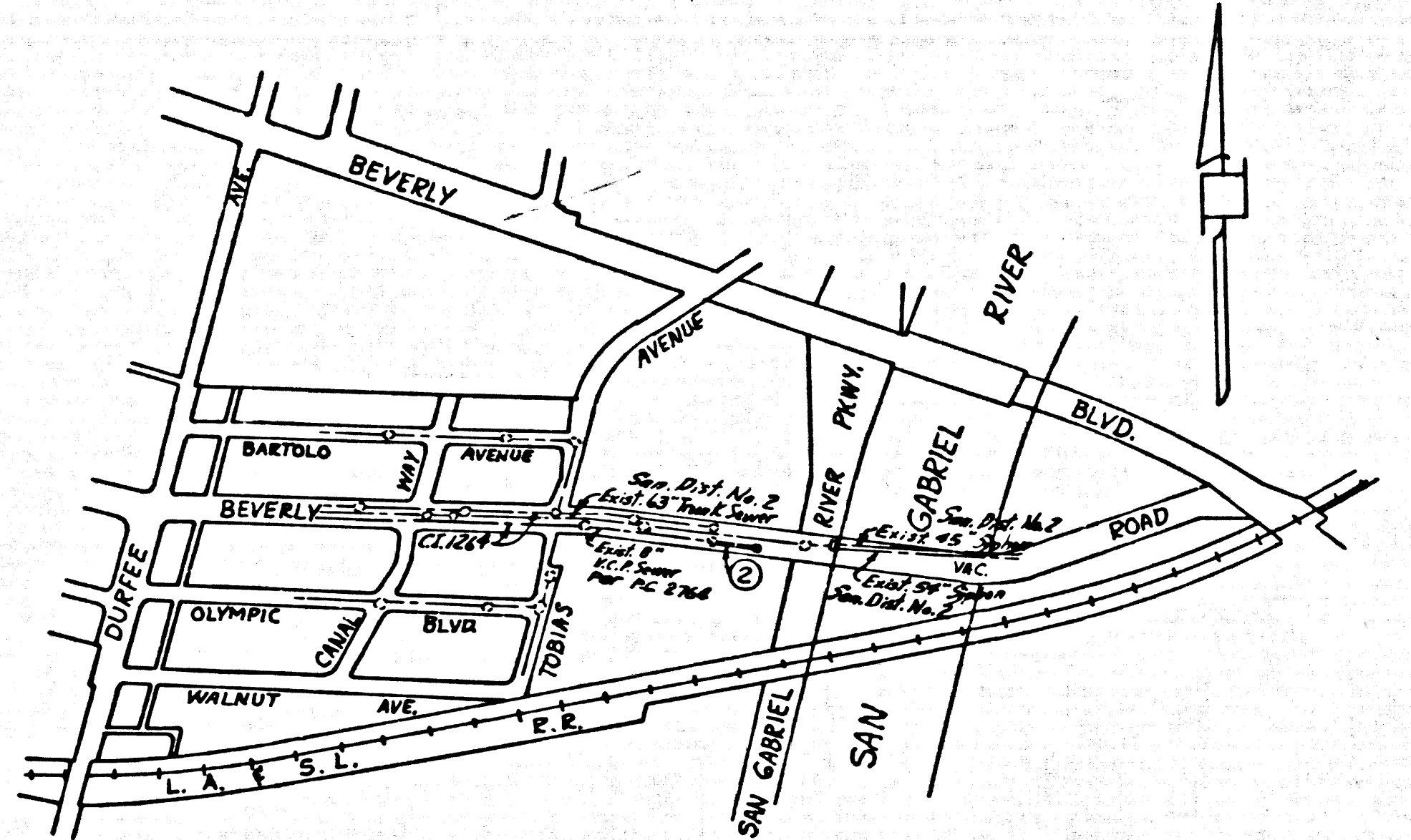
38778



ISSUE NO PERMITS TO NORTH SIDE OF STREET. STREET MUST BE DOUBLE LINED.



B.M. BY 2493 ELEV. 182.658  
 Sub L. & B. mail in W. ch. Div. No. 125 S. of ch. rd. @ S.W.  
 cor. Div. No. 4 Beverly Blvd. 25 S. of S. edge of  
 N. drive to River, Cor. 576, 9254 E. Div. No. 3, S.W.



INDEX MAP  
 SCALE: 1"=600'  
 P.C. 7586  
 BEVERLY ROAD

PRIVATE ENGINEER'S NOTICE TO CONTRACTOR  
 It shall be the responsibility of the Contractor to locate all utilities of every nature whether shown hereon or not and to protect them from damage. The Contractor shall bear the total cost of repair or replacement of said utilities damaged by special cuts in connection with the prosecution of the work.

PICO RIVERA BLDG. DIST. NO. 11.01

- NOTES:
1. PROVIDE STAKES ON THE PROPERTY LINE OR PROPERTY LINES PRODUCED AT RIGHT ANGLES TO THE SEWER LINE AT THE CENTER LINE OF EACH MANHOLE.
  2. NO REPRESENTATIVE OF THE CITY ENGINEER WILL SURVEY OR LAY OUT ANY PORTION OF THE WORK.
  3. THE PRIVATE ENGINEER SHALL FURNISH THE CITY ENGINEER WITH GRADE SHEETS AND STATIONING FOR ALL HOUSE LATERALS AND "T" BRANCHES AND SHALL PROVIDE STAKES FOR THEM AT THEIR PROPER LOCATIONS WITH STATIONING PLAINLY MARKED. ALL HOUSE LATERALS SHALL BE CONSTRUCTED IN A STRAIGHT ALIGNMENT AT RIGHT ANGLES FROM THE MAIN LINE SEWER EXCEPT AS SHOWN ON THE PLANS. HOUSE LATERALS FROM CHIMNEYS SHALL NOT HAVE AN ANGLE OF LESS THAN 45° WITH THE MAIN LINE SEWER. ANY CHANGE IN ALIGNMENT SHALL BE REQUESTED IN WRITING BY THE PRIVATE ENGINEER.
  4. THE PRIVATE ENGINEER SHALL FURNISH THE HOUSE LATERAL DEPTH AT THE PROPERTY LINE BELOW THE TOP OF CURB ELEVATION FOR EACH HOUSE LATERAL ON THE GRADE SHEET.
  5. NO REVISIONS SHALL BE MADE IN THESE PLANS WITHOUT THE APPROVAL OF THE CITY ENGINEER.
  6. THE CONTRACTOR SHALL NOTIFY THE CONSTRUCTION DIVISION BY TELEPHONE, MADISON 6-4747, EXT. 8158, AT LEAST TWENTY-FOUR HOURS BEFORE STARTING ANY WORK UNDER THIS CONTRACT.
  7. MANHOLES SHALL BE BRICK SEWER STRUCTURES PER S-2.
  8. USE STANDARD MANHOLE FRAMES AND COVERS, 61-E, EXCEPT AS NOTED.
  9. MANHOLE TOPS IN UNIMPROVED RIGHTS-OF-WAY TO BE SIX INCHES ABOVE FINISHED GRADE.
  10. USE EXTRA STRENGTH PIPE. ALL PIPE IS STANDARD DEPTH EXCEPT AS NOTED.
  11. USE MECHANICAL COMPRESSION JOINTS FOR ALL V.C.P. JOINTS PER SPECS., SECS. 34, 48 & 49.
  12. IF A POWER POLE IS WITHIN THREE FEET OF THE SEWER, THE SEWER SHALL BE ENCASED, PER S-23, TWO FEET ON EACH SIDE FROM THE POINT OF INTERFERENCE.
  13. IF DURING THE COURSE OF CONSTRUCTION IT IS DETERMINED THAT THERE IS LESS THAN FOUR FEET OF COVER OVER THE TOP OF A MAIN LINE OR HOUSE LATERAL V.C.P. SEWER WHICH IS NOT INDICATED ON THE PLANS, THE PIPE SHALL BE ENCASED PER S-23, UNLESS OTHERWISE APPROVED BY THE CITY ENGINEER.
  14. HOUSE LATERALS TO BE CONSTRUCTED WITH INVERTS AT 1/8" INCH PER FOOT TO THE PROPERTY LINE.
  15. REINFORCE ALL TRENCHES WITHIN PAVED AREAS TO MEET L.A. COUNTY ROAD DEPT. OR CALIFORNIA STATE HIGHWAY REQUIREMENTS IN ACCORDANCE WITH PERMITS.
  16. FOR ALLOWABLE LEAKAGE TEST USE FORMULA NO. 2, SPEC. 1, SEC. 54.
  17. ALL STATE AND LOCAL TRENCH SAFETY ORDERS WILL BE STRICTLY ENFORCED.
  18. THE CONTRACTOR SHALL PROVIDE TRAFFIC CONTROL DURING CONSTRUCTION AS ARRANGED WITH THE CITY OF PICO RIVERA BEFORE CONSTRUCTION OF STAKES. A SIGN SHALL ALSO POST ROAD WITHIN THE CITY OF PICO RIVERA SUFFICIENT TO COVER THE COST OF THIS TRAFFIC CONTROL.

NO CONNECTIONS FOR THE DISPOSAL OF INDUSTRIAL WASTES SHALL BE MADE TO SEWERS SHOWN ON THESE DRAWINGS WITHOUT WRITTEN PERMISSION FROM THE CHIEF ENGINEER AND GENERAL MANAGER OF THE COUNTY SANITATION DISTRICTS.

COLLECT CHARGES AS INDICATED  
 Elliott W. Bryant

APPROVED:  
 Robert A. Moore  
 INDUSTRIAL WASTE DIVISION

BEVERLY ROAD

PRIVATE CONTRACT NO. 7586

W.S. 37  
 1 SHEET, 2 PAGES

SCALE: VERT. 1"=4' HORIZ. 1"=40'

FEBRUARY, 1966  
 PREPARED IN THE OFFICES OF G.A. MOLINA engineers consultants

38777

By: G.A. Molina  
 REG. C.E. NO. 14004

FOR LEGEND SEE PLAN NO. S-1

NOTES:  
 GRADES TO WHICH THIS IMPROVEMENT IS TO BE CONSTRUCTED ARE SHOWN ON PLANS AND PROFILES. GRADE POINTS FOR TOP OF CURB, CENTER LINE OF STREETS, OR CENTER LINE OF ALLEYS ARE SHOWN BY CIRCLES ON PROFILES. AT ALL POINTS BETWEEN DESIGNATED POINTS THE GRADE SHALL BE ESTABLISHED SO AS TO CONFORM TO A STRAIGHT LINE DRAWN BETWEEN SAID DESIGNATED POINTS. ELEVATIONS ARE IN FEET ABOVE U.S.C. & G.S. SEA LEVEL UNLESS OTHERWISE NOTED. ON FILE IN THE OFFICE OF THE CITY ENGINEER AND THE SANITATION DISTRICT ENGINEER. THIS DRAWING AND THE DATA HEREON ARE HEREBY MADE A PART OF THE SPECIFICATIONS. BEFORE WORK CAN BE STARTED, THE CONTRACTOR MUST OBTAIN A PERMIT TO EXCAVATE IN COUNTY STREETS FROM THE L.A. COUNTY ROAD DEPT., DISTRICT OFFICE NO. 11, AND FILE A DEPOSIT WITH THE CITY OF PICO RIVERA, 120 SOUTH SPRING STREET, LOS ANGELES, CALIFORNIA, IN THE AMOUNT OF \$100.00 TO COVER THE COST OF CONSTRUCTION INSPECTION AND RECORD PLANS. APPROVAL OF THIS PLAN BY THE CITY OF PICO RIVERA DOES NOT CONSTITUTE A REPRESENTATION AS TO THE ACCURACY OF THE LOCATION OF OR THE EXISTENCE OR NON-EXISTENCE OF ANY UNDERGROUND UTILITY PIPE, OR STRUCTURE WITHIN THE LIMITS OF THIS PROJECT. THIS NOTE APPLIES TO ALL PAGES. IF WORK IS TO BE DONE IN A STATE HIGHWAY, A PERMIT MUST BE OBTAINED FROM THE STATE OF CALIFORNIA, DIVISION OF HIGHWAYS, 120 SOUTH SPRING STREET, LOS ANGELES, CALIFORNIA.

CITY OF PICO RIVERA, CALIFORNIA  
 JOHN A. LAMBIE, CITY ENGINEER J. D. PARKHURST, CHIEF ENGINEER

APPROVED BY: [Signature] APPROVED BY: [Signature]

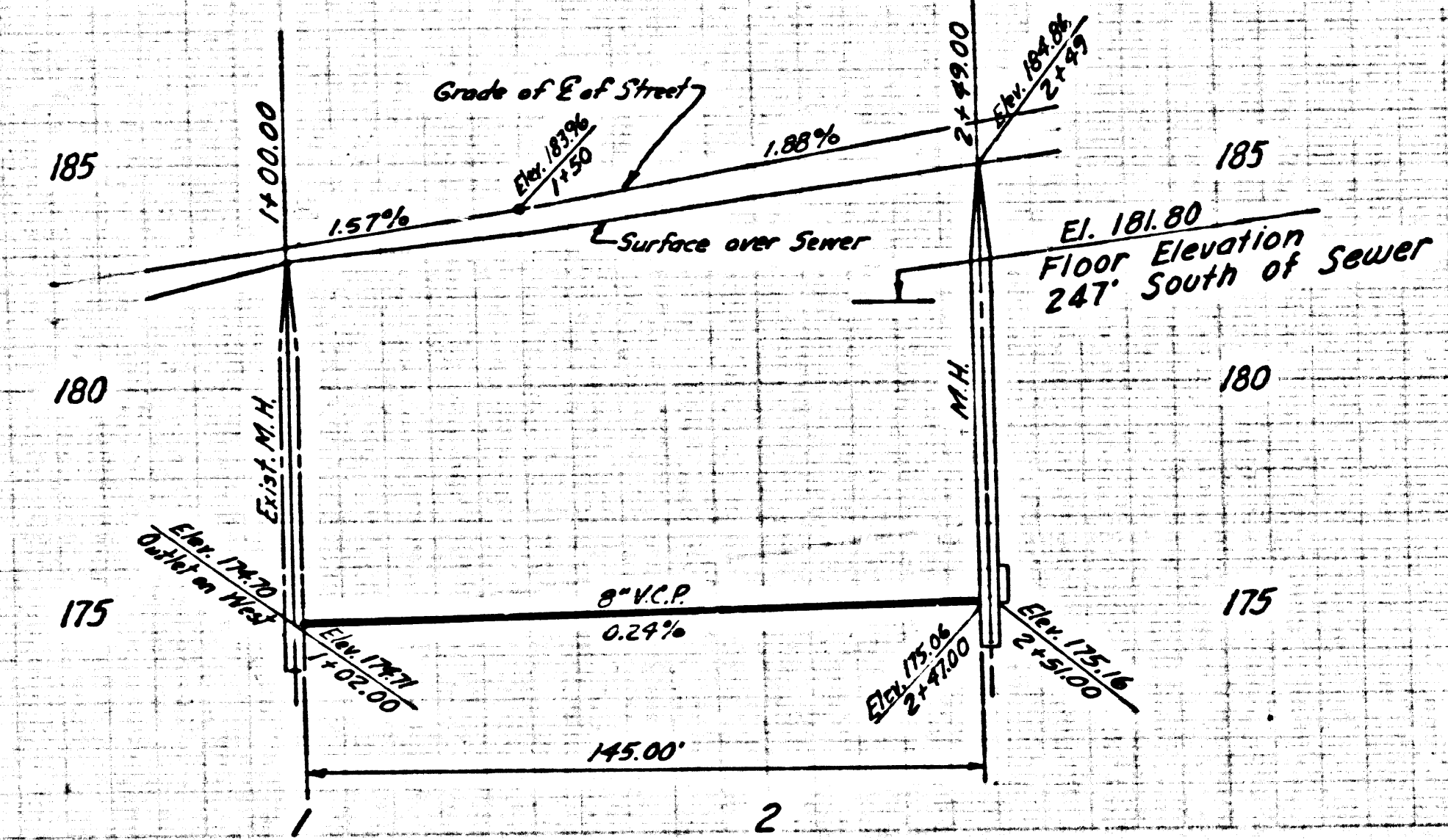
SUBMITTED BY: [Signature] LOS ANGELES REGIONAL ENGINEER, P.C. 7586

CHECKED BY: [Signature] REG. C.E. NO. 15731

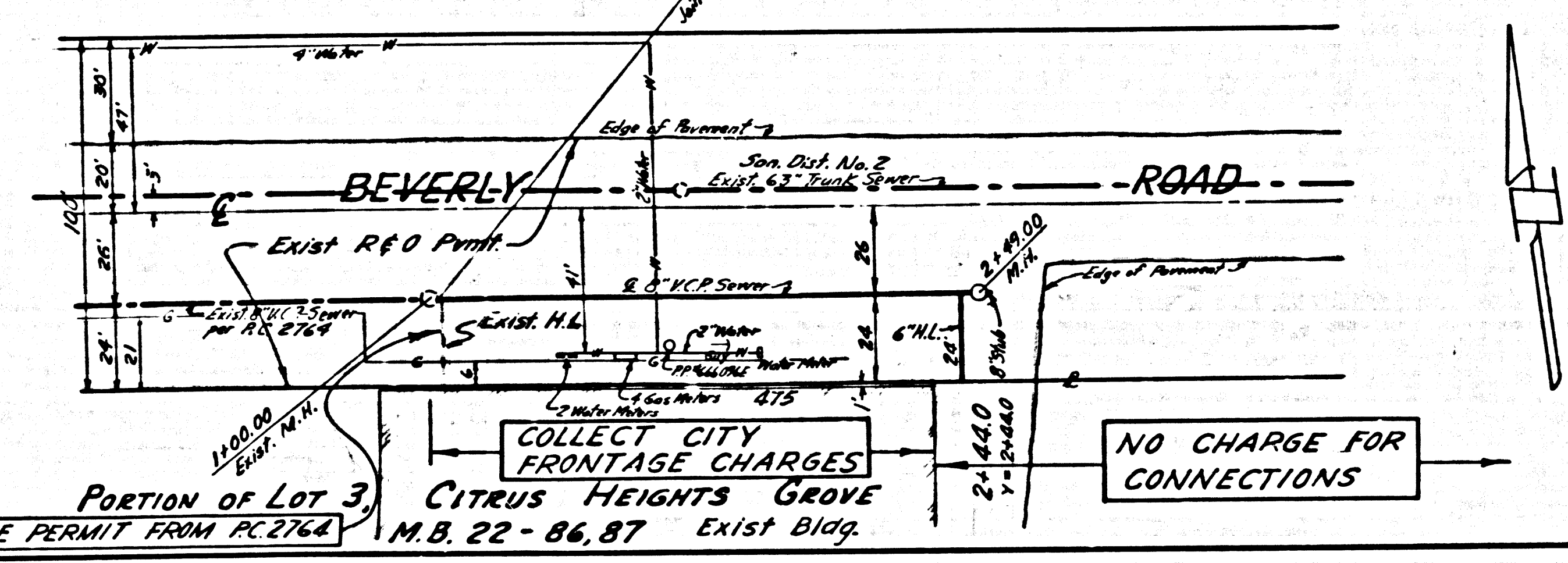
Approved: [Signature] City of Pico Rivera

COLLECT CHARGES AS INDICATED

38778



ISSUE NO PERMITS TO NORTH SIDE OF STREET. STREET MUST BE DOUBLE LINED.



COLLECT CITY FRONTAGE CHARGES CITRUS HEIGHTS GROVE M.B. 22-86, 87 Exist. Bldg.

NO CHARGE FOR CONNECTIONS