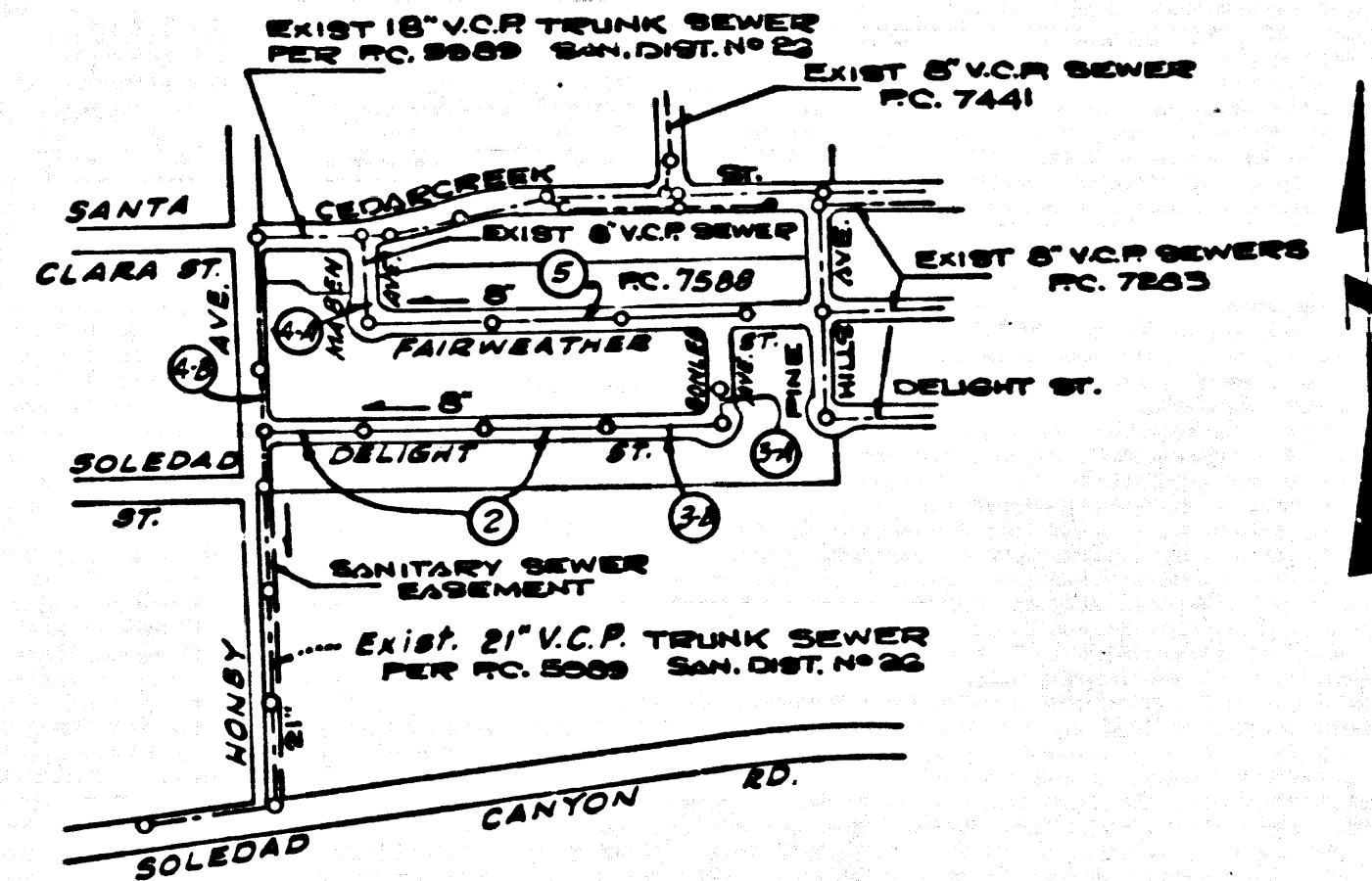


B.M. SL-928 ELEV. 1302.102
 8' D.I.M. 7.48 IN HWY CURB CORNER OF
 S. PINE ST. INTERSECTION 84.07' ± S. 24' W. W/ W/ OF
 S. SOLEDAD CANYON RD. 1000 E/W/ OF
 HONEY AVENUE S.I.M. 25 E/W/ OF ROUGHLEY
 CANYON ROAD
 NEWHALL QUAD. 1958

THE ACCURACY OF THE LOCATION OF OR THE EXISTENCE OR NON-EXISTENCE OF ANY UTILITY PIPE OR STRUCTURE WITHIN THE
 LIMITS OF THIS PROJECT DOES NOT CONSTITUTE RESPONSIBILITY BY THE ENGINEER.

NOTE:
 LOTS 1 AND 81-85 INCL. ARE SERVED BY SEWERS
 IN PINE HILLS AVE. AND DELIGHT ST. CONSTRUCTED
 UNDER P.C. 7283

REVISIONS: AUGUST 1966
 PAGE 2 - RAISED CURB GRADES, STA. 1400.00 TO
 STA. 3+21.
 PAGE 4A - RAISED CURB GRADES.
 PAGE 4-B -
 PAGE 5 - RAISED CURB GRADES, STA. 0+35 TO
 STA. 7+88.
 APPROVED: *Ralph Schefler* 9/19/66
 CHIEF OF COUNTY ENGINEER



NOTE: NUMBERS IN CIRCLES INDICATE
 PAGE NUMBERS

INDEX MAP
 TRACT NO. 29810
 P.C. 7589
 Scale 1"=600'

Any connection to the sewer system of County
 Sanitation District, provided directly or
 indirectly by the sewers shown on these plans,
 shall be considered a temporary connection
 until all area served is annexed to said
 district, at which time the connection shall
 become permanent. If for any reason the
 annexation to the district of any area served
 hereunder in a completed, the property lot
 in the district will be required to disconnect
 unless a contract is entered into with the
 district providing for the disposal of sewage
 from the area.

ISSUE NO HOUSE CONNECTION PERMITS
 UNTIL TRACT NO. 29810 HAS BEEN
 RECORDED.

NEWHALL BLDG. DIST. NO. 8.2

PROFILE, ALIGNMENT AND GRADE OF
 SANITARY SEWERS PAGE 1

TRACT NO. 29810

PRIVATE CONTRACT NO. 7589

W.S. 62
 3 SHEETS, 5 PAGES

SCALE: HORIZ. 1"=40' VERT. 1"=4'

PREPARED IN THE OFFICES OF
 McINTIRE AND QUIROS, INC.
 670 MONTEREY PASS ROAD
 MONTEREY PARK, CALIF.
 TEL. 283-7661, 283-5111

APPROVED BY: *Ralph Schefler*
 REG. C.E. NO. 8583

FOR LEGEND SEE PLAN NO. S-1

- NOTES:
1. PROVIDE STAKES ON THE PROPERTY LINE OR PROPERTY LINES PRODUCED AT RIGHT ANGLES TO THE SEWER LINE AT THE CENTER LINE OF EACH MANHOLE.
 2. NO REPRESENTATIVE OF THE COUNTY ENGINEER WILL SURVEY OR LAY OUT ANY PORTION OF THE WORK.
 3. THE PRIVATE ENGINEER SHALL FURNISH THE COUNTY ENGINEER WITH GRADE SHEETS AND STATIONING FOR ALL HOUSE LATERALS AND "T" BRANCHES AND SHALL PROVIDE STAKES FOR THEM AT THESE PROPER LOCATIONS WITH STATIONING PLAINLY MARKED. ALL HOUSE LATERALS SHALL BE CONSTRUCTED IN A STRAIGHT ALIGNMENT AT RIGHT ANGLES FROM THE MAIN LINE SEWER EXCEPT AS SHOWN ON THE PLANS. HOUSE LATERALS FROM CHIMNEYS SHALL NOT HAVE AN ANGLE OF LESS THAN 45° WITH THE MAIN LINE SEWER. ANY CHANGE IN ALIGNMENT SHALL BE REQUESTED BY WRITING BY THE PRIVATE ENGINEER.
 4. THE PRIVATE ENGINEER SHALL FURNISH THE HOUSE LATERAL DEPTH AT THE PROPERTY LINE BELOW THE TOP OF CURB ELEVATION FOR EACH HOUSE LATERAL ON THE GRADE SHEET.
 5. NO REVISIONS SHALL BE MADE IN THESE PLANS WITHOUT THE APPROVAL OF THE COUNTY ENGINEER.
 6. THE CONTRACTOR SHALL NOTIFY THE CONSTRUCTION DIVISION BY TELEPHONE, MADISON 9-6747, EXT. 81331, AT LEAST TWENTY-FOUR HOURS BEFORE STARTING ANY WORK UNDER THIS CONTRACT.
 7. MANHOLES SHALL BE BRICK SEWER STRUCTURES PER S-3. PRECAST CONCRETE MANHOLES PER S-3 ON S-4 MAY BE USED AS AN ALTERNATE IN LOCATIONS APPROVED BY THE COUNTY ENGINEER.
 8. USE STANDARD MANHOLE FRAMES AND COVERS, S-15, EXCEPT AS NOTED.
 9. MANHOLE DEVS IN UNIMPROVED AREAS OF WAY TO BE SIX INCHES ABOVE FINISHED GRADE.
 10. USE EXTRA STRENGTH PIPE. ALL PIPE IS STANDARD DEPTH EXCEPT AS NOTED.
 11. USE MECHANICAL COMPRESSION JOINTS FOR ALL V.C.P. JOINTS PER SPECS., SECT. 34, 48 & 49.
 12. IF A POWER POLE IS WITHIN THREE FEET OF THE SEWER, THE SEWER SHALL BE ENCASED, PER S-23, TWO FEET ON EACH SIDE FROM THE POINT OF INTERFERENCE.
 13. IF DURING THE COURSE OF CONSTRUCTION IT IS DETERMINED THAT THERE IS LESS THAN FOUR FEET OF COVER OVER THE TOP OF A MAIN LINE OR HOUSE LATERAL V.C.P. SEWER WHICH IS NOT INDICATED ON THE PLANS, THE PIPE SHALL BE ENCASED PER S-23, UNLESS OTHERWISE APPROVED BY THE COUNTY ENGINEER.
 14. HOUSE LATERALS TO BE CONSTRUCTED WITH INVERTS AT PROPERTY LINE 4 FEET BELOW CURB GRADE EXCEPT AS NOTED.
 15. REINFORCE ALL TRENCHES WITHIN PAVED AREAS TO MEET L.A. COUNTY ROAD DEPT. OR CALIFORNIA STATE HIGHWAY REQUIREMENTS IN ACCORDANCE WITH PERMITS.
 16. FOR ALLOWABLE LEAKAGE TEST USE FORMULA NO. 2, SPEC. S., S.C. 54.
 17. ALL STATE AND LOCAL TRENCH SAFETY ORDERS WILL BE STRICTLY ENFORCED.
 18. CONSTRUCTION IN FILLER AREAS
 (a) AN ACCEPTABLE CERTIFICATION OF COMPACTION TEST RESULTS SHALL BE SUBMITTED TO THE CONSTRUCTION DIVISION. COMPACTION TESTS ARE TO BE MADE IN ACCORDANCE WITH A.S.T.M. STANDARD METHOD OF TEST 9.99-47.
 (b) NO CONSTRUCTION IS PERMITTED IN FILLER AREAS WHERE THE RELATIVE DENSITY OF COMPACTION IS LESS THAN 80%.
 (c) IF THE RELATIVE DENSITY OF COMPACTION IS LESS THAN 80%, ALL MAIN LINE AND HOUSE LATERALS SHALL BE GRADED PER S-23 OR HAVE A SPECIAL AGGREGATE BASE PER S-31, CASE III. SPECIAL MANHOLE BASES PER S-14 ARE REQUIRED.
 (d) IF THE RELATIVE DENSITY OF COMPACTION IS 90% OR GREATER, THE SPECIAL PROVISIONS IN (C) ARE NOT REQUIRED.

NO CONNECTIONS FOR THE DISPOSAL OF
 INDUSTRIAL WASTES SHALL BE MADE TO
 SEWERS SHOWN ON THESE DRAWINGS
 WITHOUT WRITTEN PERMISSION FROM THE
 CHIEF ENGINEER AND GENERAL MANAGER
 OF THE COUNTY SANITATION DISTRICTS.

BEFORE BREAKING INTO ANY EXISTING STRUCTURE
 AND BEFORE FINAL ACCEPTANCE OF THIS WORK,
 COUNTY SANITATION DISTRICT (DU-4-1281) SHALL
 BE NOTIFIED IN ORDER THAT REQUIRED INSPEC-
 TION CAN BE MADE.

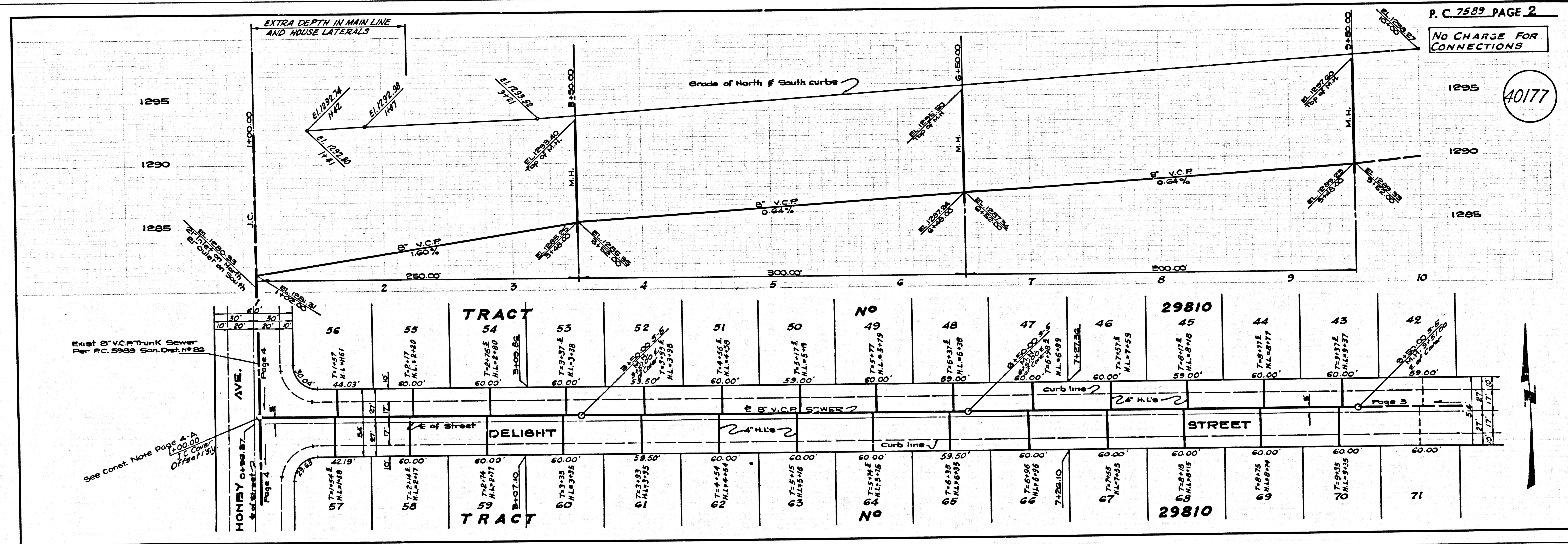
COLLECT CHARGES
 AS INDICATED
Ralph Schefler

NOTE:
 GRADES TO WHICH THIS IMPROVEMENT IS TO BE CONSTRUCTED ARE SHOWN ON PLANS AND PROFILES. GRADE POINTS FOR TOP OF
 CURBS, CENTER LINE OF STREETS, OR CENTER LINE OF ALLEYS ARE SHOWN BY CIRCLES ON PROFILES. AT ALL POINTS BETWEEN DESIGNATED
 POINTS THE GRADE SHALL BE ESTABLISHED SO AS TO CONFORM TO A STRAIGHT LINE DRAWN BETWEEN SAID DESIGNATED POINTS.
 ELEVATIONS ARE IN FEET ABOVE U.S.C. & G.S. SEA LEVEL DATUM OF 1929.
 THIS DRAWING AND THE DATA HEREON ARE HEREBY MADE A PART OF THE SPECIFICATIONS. AS REVISED
 IN ACCORDANCE WITH PERMITS.
 THE DRAWING AND THE DATA HEREON ARE HEREBY MADE A PART OF THE SPECIFICATIONS. AS REVISED
 IN ACCORDANCE WITH PERMITS.
 COUNTY ENGINEER AND SHALL BE PRODUCED ONLY IN THE PRESENCE OF THE COUNTY ENGINEER.
 BEFORE WORK CAN BE STARTED, THE CONTRACTOR MUST OBTAIN A PERMIT TO EXCAVATE IN COUNTY STREETS FROM THE L.A. COUNTY
 ROAD DEPT. DISTRICT OFFICE OF THE COUNTY ENGINEER, ROOM 308, COUNTY ENGINEER'S BUILDING,
 100 WEST SECOND STREET, OR ANY RELIABLE LOCAL OFFICE. REGIONAL OFFICE, SUPPORT TO COVER THE COST OF
 CONSTRUCTION INSPECTION AND RECORD PLANS.
 APPROVAL OF THE PLAN BY THE COUNTY OF LOS ANGELES DOES NOT CONSTITUTE A REPRESENTATION AS TO THE ACCURACY OF THE
 LOCATION OF OR THE EXISTENCE OR NON-EXISTENCE OF ANY UNDERGROUND UTILITY PIPE, OR STRUCTURE WITHIN THE LIMITS OF THE
 PROJECT. THIS NOTE IS TO BE DONE IN A SEPARATE INSTRUMENT. A PERMIT MUST BE OBTAINED FROM THE STATE OF CALIFORNIA, DIVISION OF HIGHWAYS,
 120 SOUTH SPRING STREET, LOS ANGELES, CALIFORNIA.

COUNTY OF LOS ANGELES, CALIFORNIA
 JOHN A. LAMBIE, COUNTY ENGINEER J. D. PARKHURST, CHIEF ENGINEER
 CO. SAN. DIST. NO. 82
 APPROVED BY: *Ralph Schefler* ASSISTANT SANITATION ENGINEER APPROVED BY: *J. D. Parkhurst* CHIEF ENGINEER

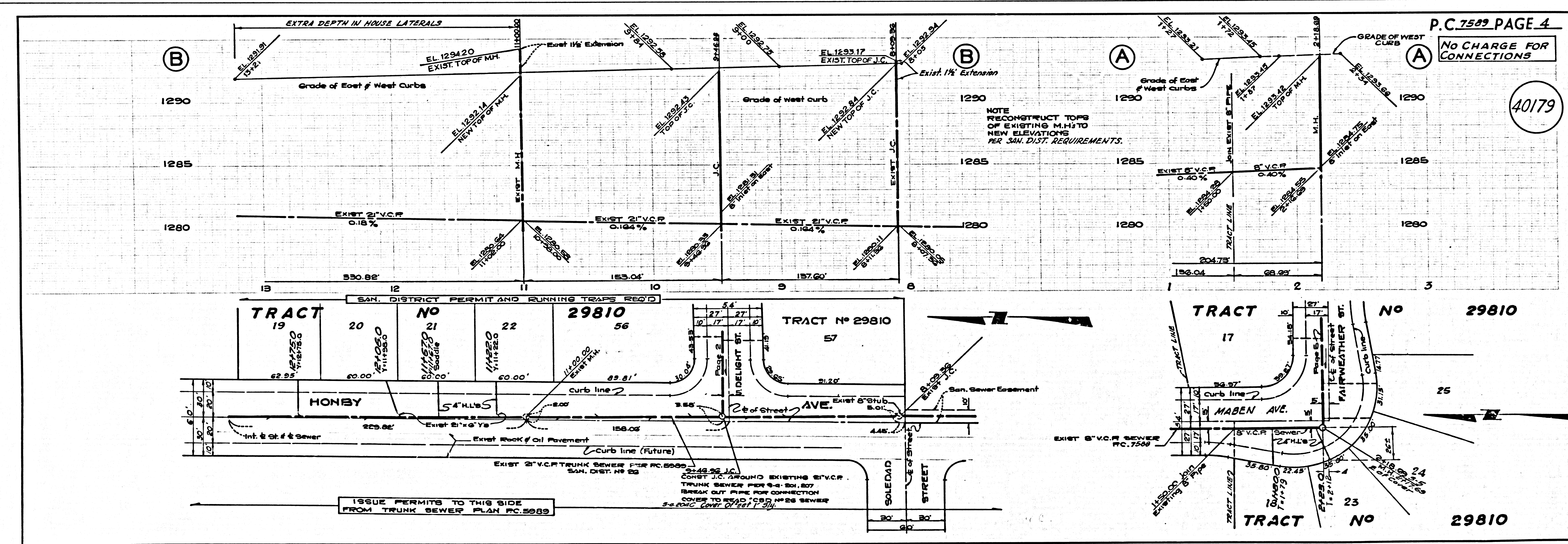
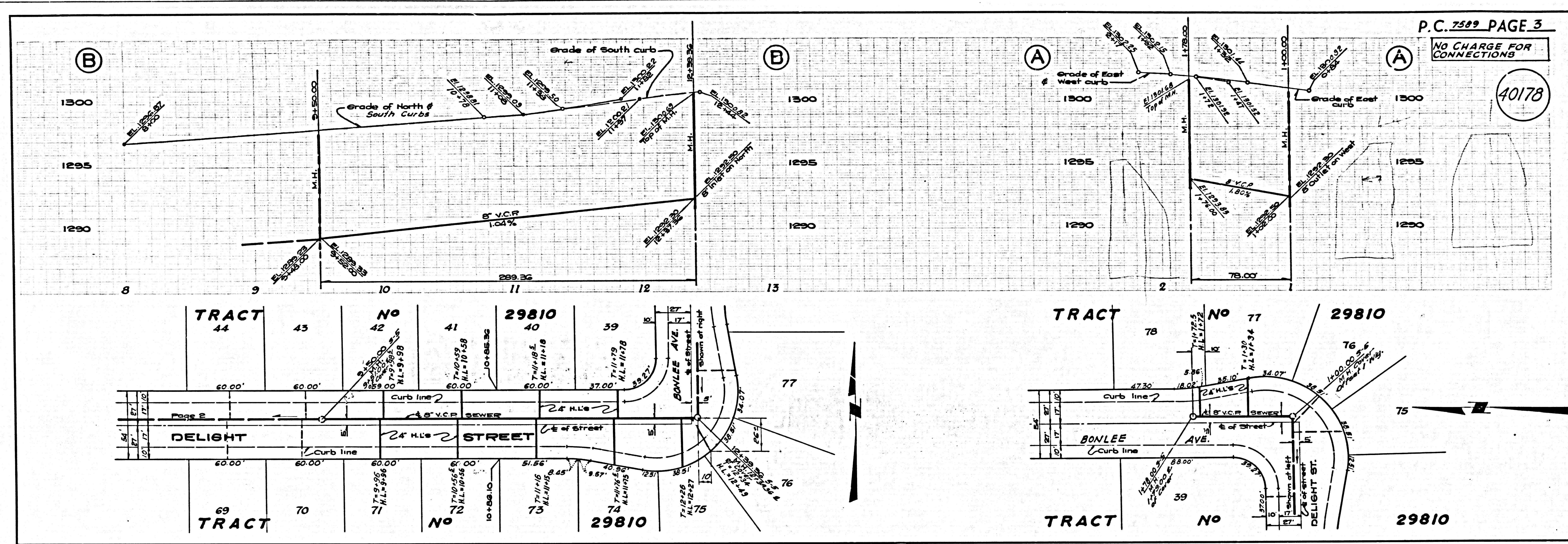
CHECKED BY: *Ralph Schefler* 6/2/66
 REG. C.E. NO. 13406

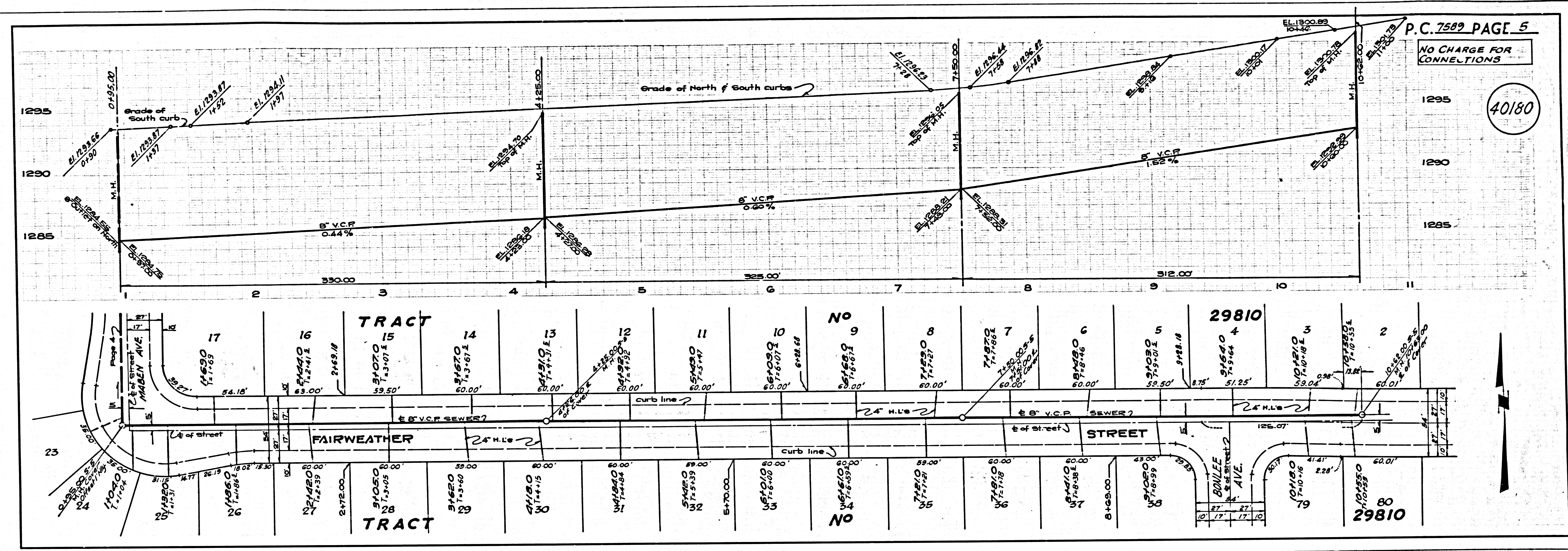
J.N. 0367.21



P.C. 7589 PAGE 2
 NO CHARGE FOR
 CONNECTIONS

See Const. Note Page 4-A
 100.00' Lift Cover
 Offset 7.5'





P.C. 7589 PAGE 5

NO CHARGE FOR CONNECTIONS

40180

