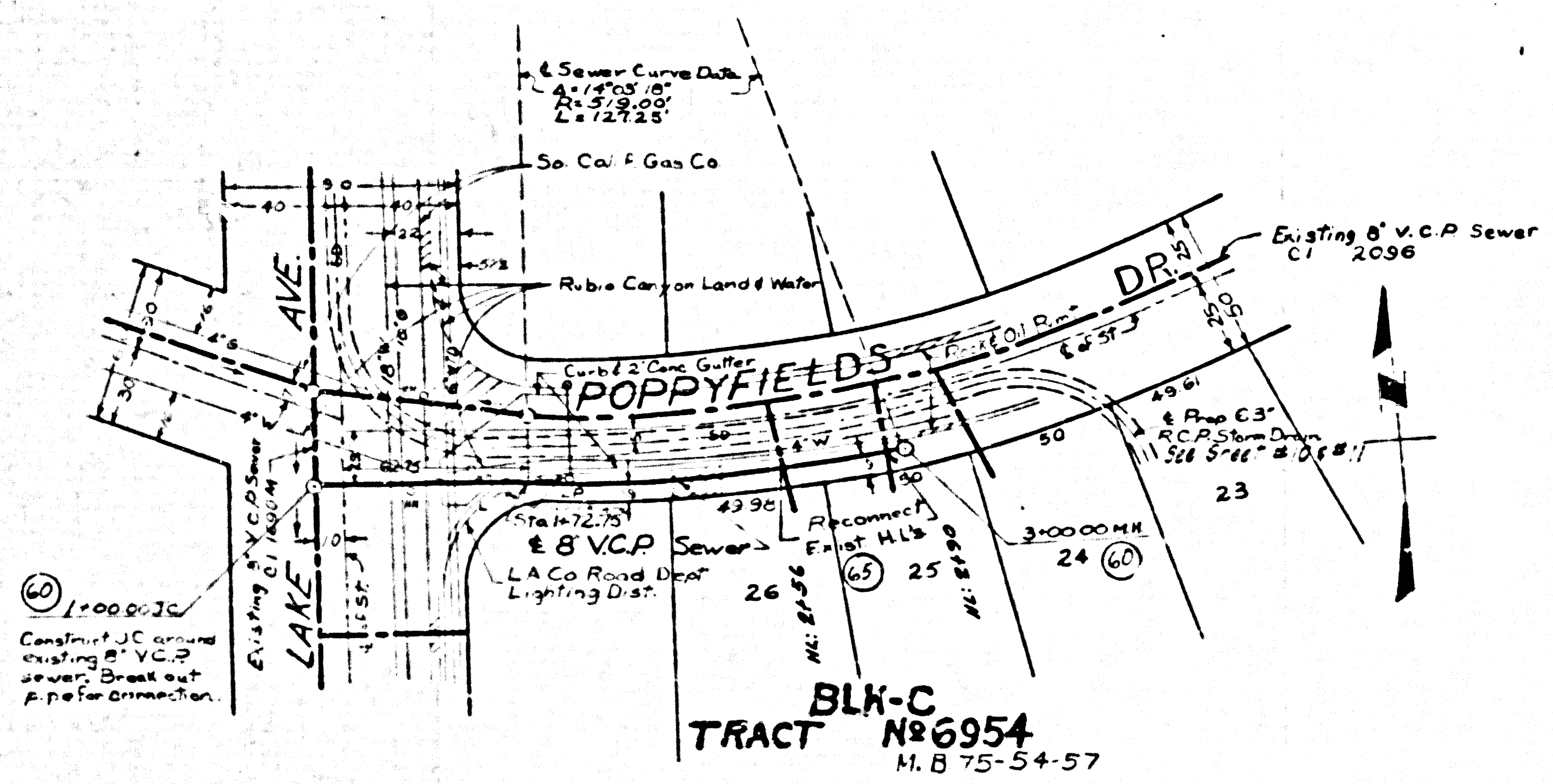


BY 602 Elev. 1465.884 F.B. 1930-12
 Lane Ave & Poppyfields Dr. SW Cor.
 T. SpX. 44 West of E. end curb

-EXTRA DEPTH IN MAIN LINE-
 Reconnect all existing house laterals
 Contractor to maintain service at all times.

PROFILE
 HORIZ SCALE 1" = 40'
 VERT SCALE 1" = 4'



BLK-C
TRACT No 6954
 M.B 75-5+57

PLAN
 SCALE 1" = 40'



47,356

1958 STORM DRAIN BOND ISSUE

PREPARED BY JOHN A. LAMBIE COUNTY ENGINEER	REVISIONS MARK DATE DESCRIPTION		LOS ANGELES COUNTY FLOOD CONTROL DISTRICT PROJECT 544 EAST ALTADENA LINE A CONCRETE CONDUIT SANITARY SEWER RECONSTRUCTION
	RECOMMENDED BY P.C. 7590 <small>RECOMMENDED BY CONTRACTOR FOR USER</small>	CHECKED BY <small>DATE</small>	
<small>DESIGNED BY</small> <small>DESIGNED BY</small>	<small>CHECKED BY</small> <small>DATE</small>	<small>APPROVED BY</small> <small>DATE</small>	SCALE DATE AS SHOWN JUNE 65 NO. 275-544-D22 SHEET 23 OF 23

PC 7590

SEE PC 7590