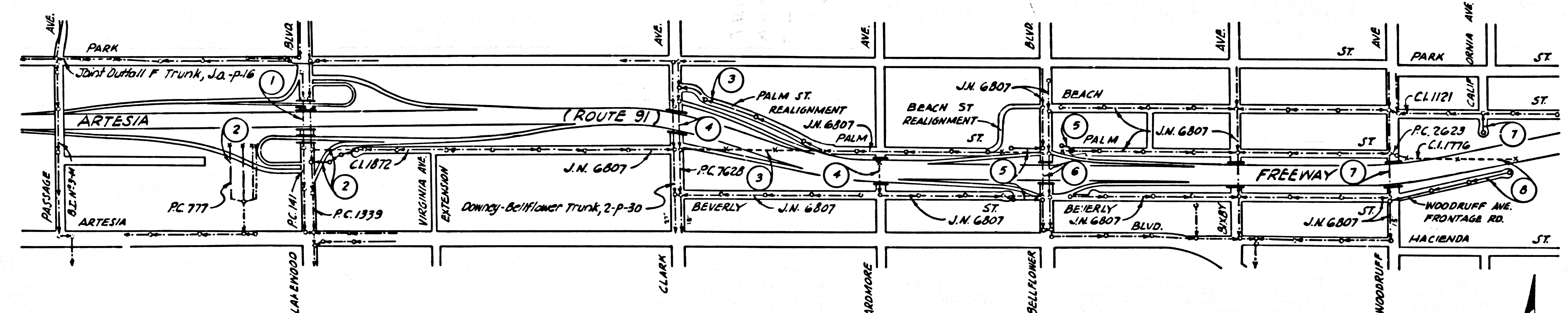


PC 7610

7	CALIF.	FEDERAL PROJECT NO.	SHEET NO.	TOTAL SHEETS
117	LA	97	2	2



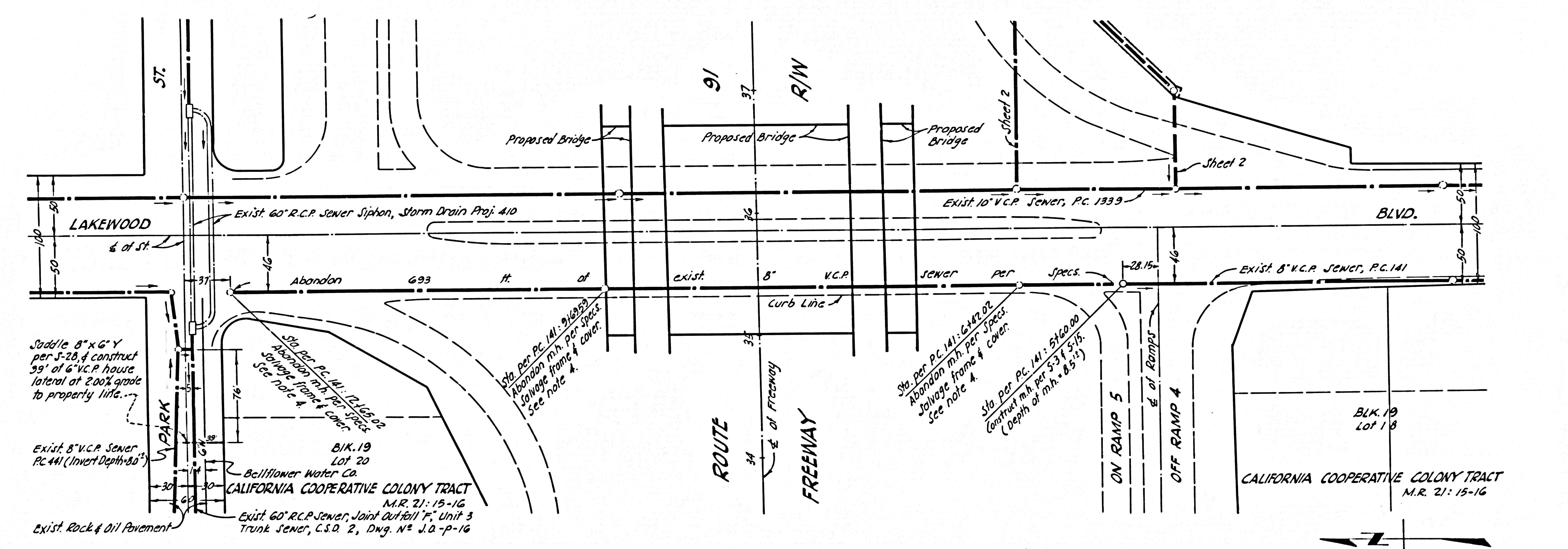
INDEX MAP
 ROUTE 91 FREEWAY
 R.C. 7610
 W.S. 32433 SCALE 1"=600' R. 73-74
 LEGEND
 Sewers to be abandoned
 Sewers to be constructed
 Existing sewers
 Sheet numbers

- NOTE:
- The Resident Engineer shall notify the construction Division of the City Engineer by telephone 629-4747, Ext 81551 at least 24 hours before starting work on this project.
 - The contractor shall maintain sewer service at all times during construction.
 - No connections for the disposal of industrial wastes shall be made to sewers shown on these drawings without written permission from the Chief Engineer & General Manager of the County Sanitation Districts.
 - The contractor shall deliver salvaged manhole frames and covers indicated to the City Sewer Maintenance Yard, 1129 E. 59th Street, Los Angeles, California.

PLAN & PROFILE OF
 SANITARY SEWERS
 TO BE RECONSTRUCTED UNDER
 R.C. 7610
 SHEET 1 OF 8 SHEETS MAY, 1966
 SCALES: HORIZ: 1"=50', VERT: 1"=5'
 W.S. 32433
 CITY OF BELLFLOWER, CALIFORNIA
 APPROVED, JOHN A. LAMBIE, CITY ENGINEER
 BY: *Richard S. Keller* S.C.E.
 ASST. SANITATION DIVISION ENGINEER R.E. 17860
 APPROVED, JOHN D. PARKHURST, CHIEF ENGINEER
 COUNTY SANITATION DISTRICT #2
 BY: *J.P. Postma*
 OFFICE ENGINEER
 SUBMITTED BY: *Richard S. Keller* R.E. 17860

40114

NO CONNECTIONS FOR THE DISPOSAL OF INDUSTRIAL WASTES SHALL BE MADE TO SEWERS SHOWN ON THESE DRAWINGS WITHOUT WRITTEN PERMISSION FROM THE CHIEF ENGINEER AND GENERAL MANAGER OF THE COUNTY SANITATION DISTRICTS.



DESIGN DEPT	INITIAL	DATE
Assigned		
Checked		
Supervised by		

Project Engineer	Date	Design Engineer	Date	Approval Recommended By	Date

B.F.R.	STATE	FEDERAL PROJECT No.	FISCAL YEAR	SHEET No.	TOTAL SHEETS
VII	LA	91	1961	2	8

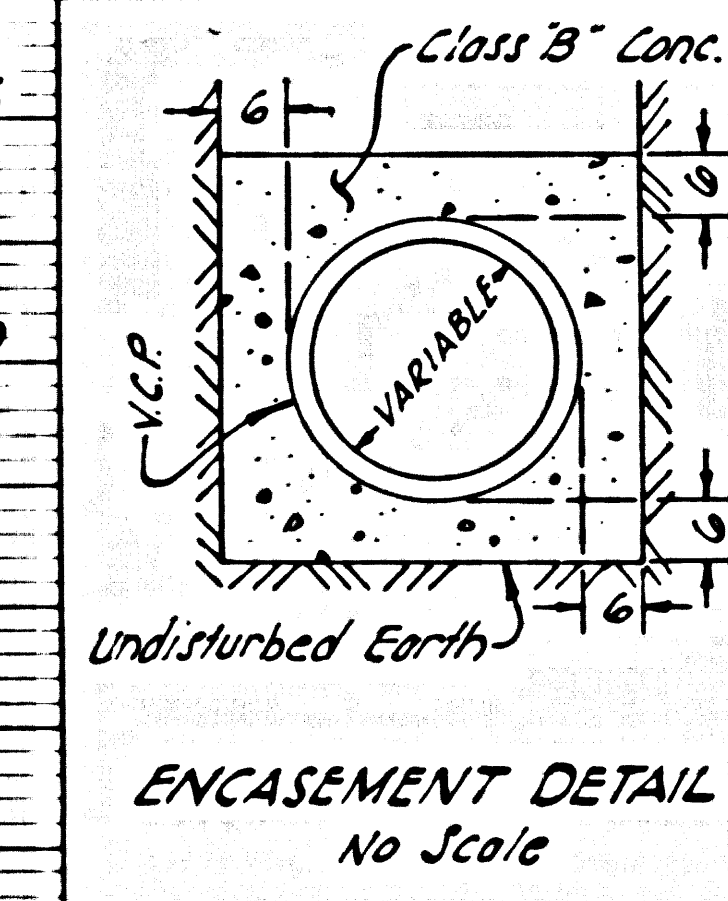
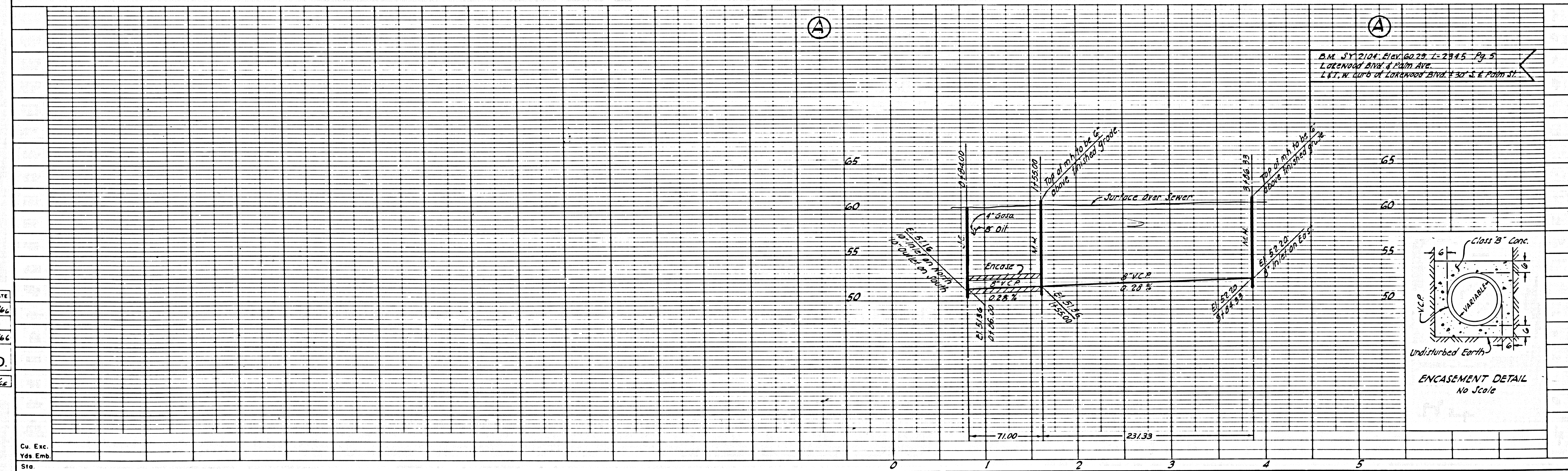
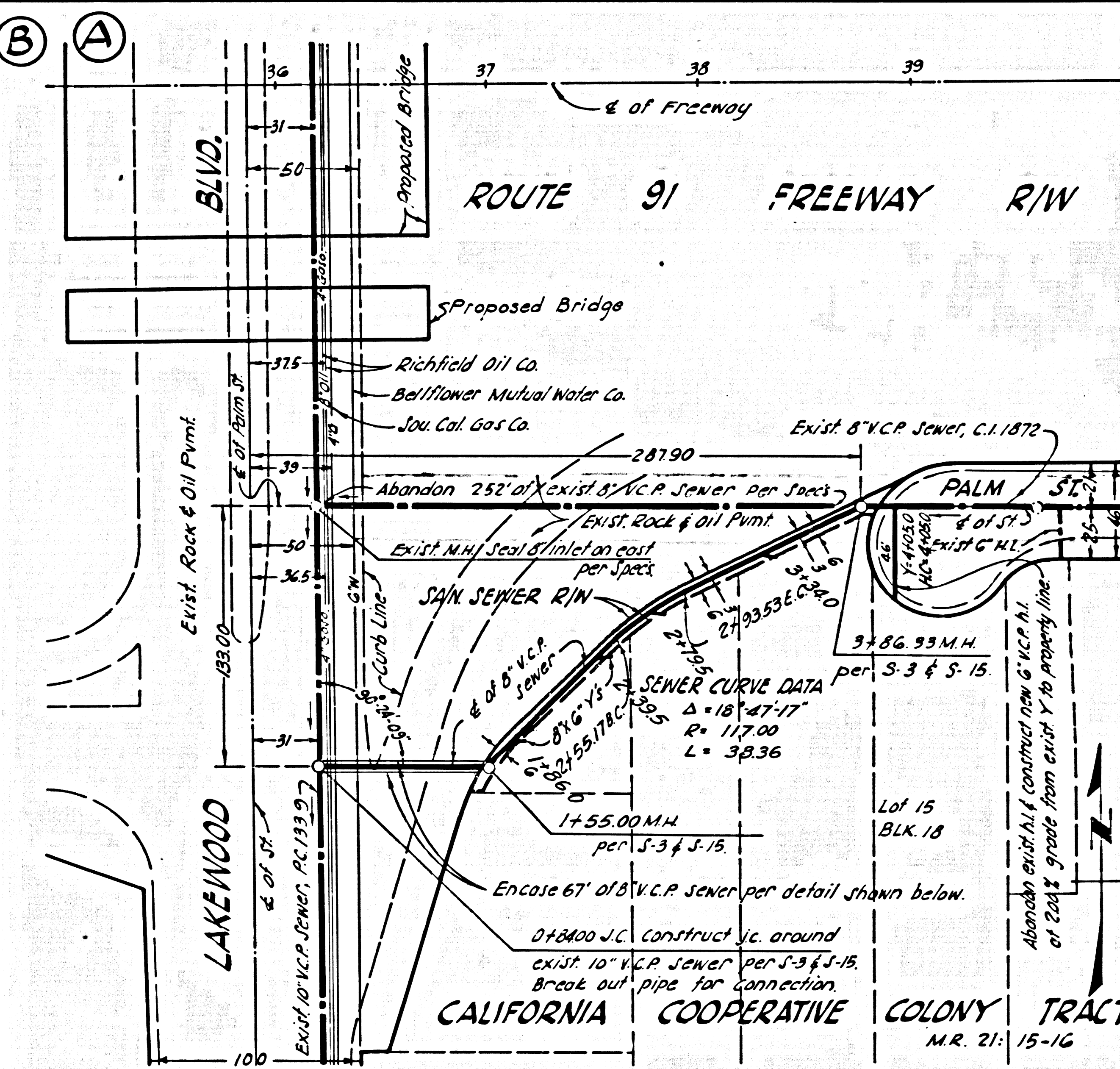
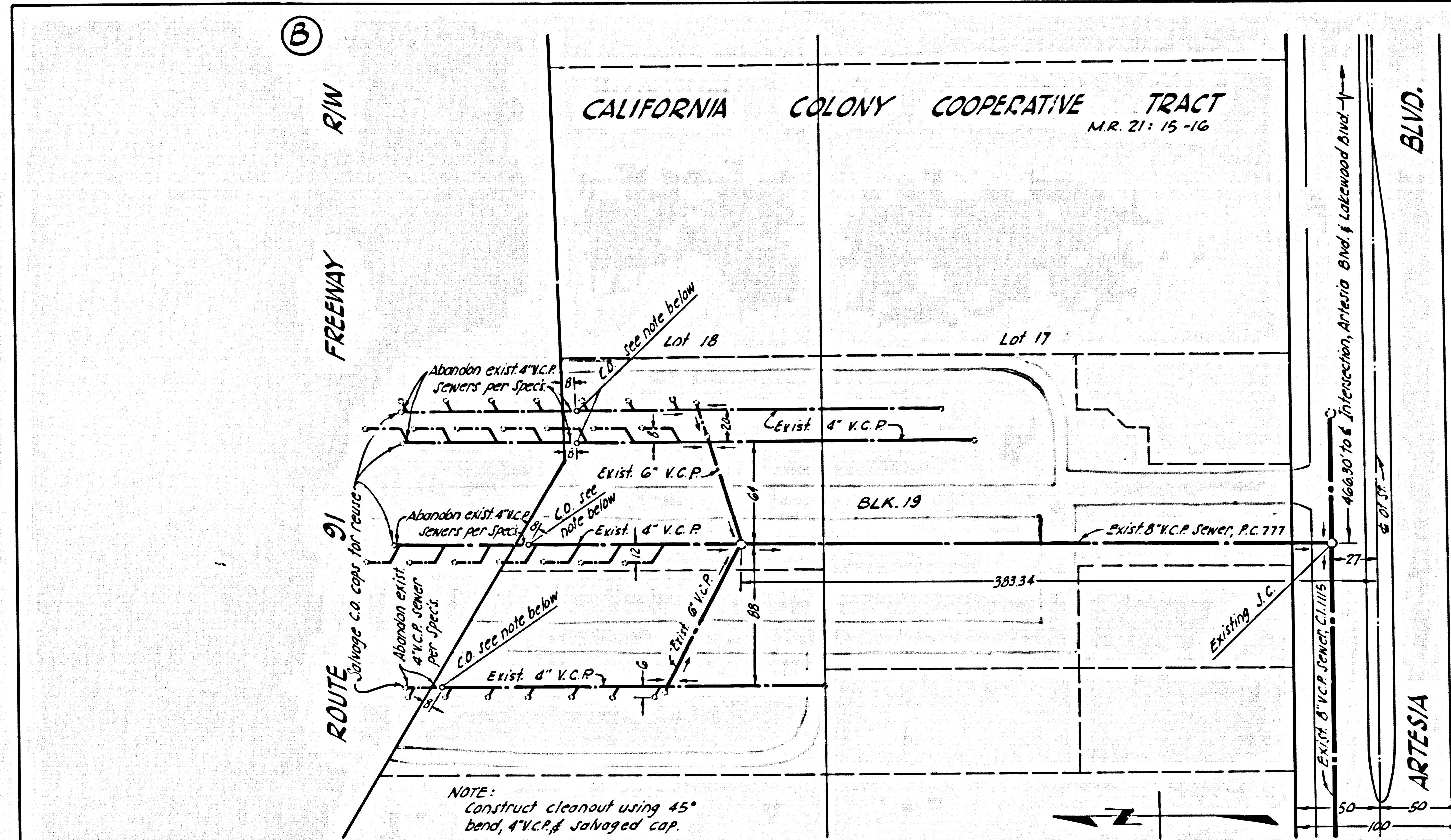
APPROVED: _____
 DEPUTY DISTRICT ENGINEER

P. C. 7610
SHEET 2 OF 8 SHEETS

FOR R/W DATA AND EGRESS ACCESS
 DETERMINATION, SEE DISTRICT MAPS
 OF DISTRICT OFFICE

40115

Deleted M.H. in realigned statement, Sec. A.	Revised	6-3-64
REVISION	APPROVED	DATE



DESIGN DEPT	INITIAL	DATE
DESIGNED	SM	5/66
TRACED		
CHECKED	AO	5/66
SUPERVISED BY		
WATSON, D.		
RIGHT OF WAY E.L. 5/66		

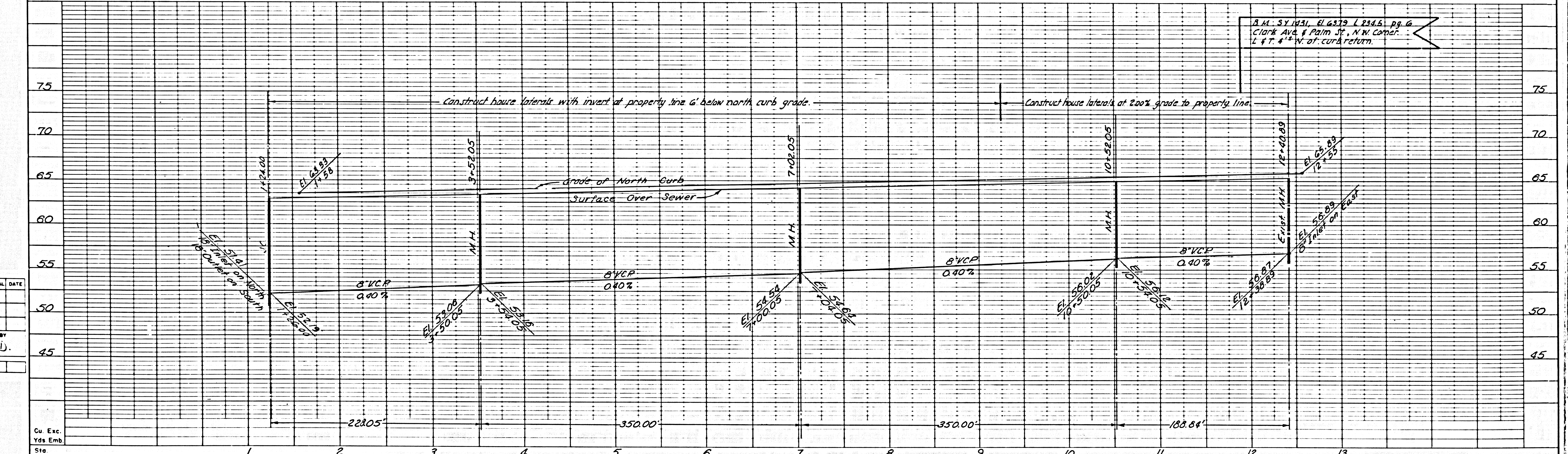
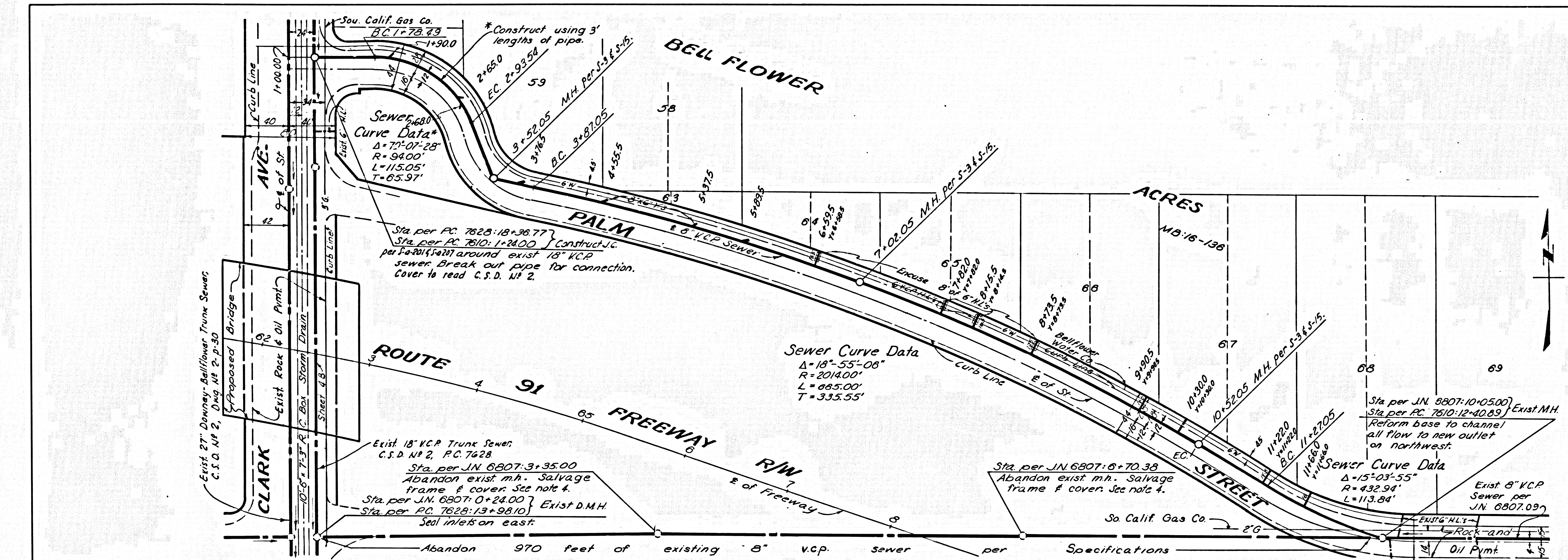
PROJECT ENGINEER	DATE	DESIGN ENGINEER	DATE	APPROVAL RECOMMENDED BY	DATE
B.L. Watson	5/1/66	C. Long Beach	4/1/66	W. L. Watson	5/1/66

177-16

B.P.R.	STATE	FEDERAL PROJECT No.	FISCAL YEAR	SHEET No.	TOTAL SHEETS
VII	LA	91	R143-R-170		

P. C. 7610
SHEET 3 OF 8 SHEETS

40116



DESIGN DEPT	INITIAL	DATE
DESIGNED		
TRACED		
CHECKED		
SUPERVISED BY		
WATSON, D.		
RIGHT OF WAY		

PROJECT ENGINEER	DATE	DESIGN ENGINEER	DATE	APPROVAL RECOMMENDED BY	DATE

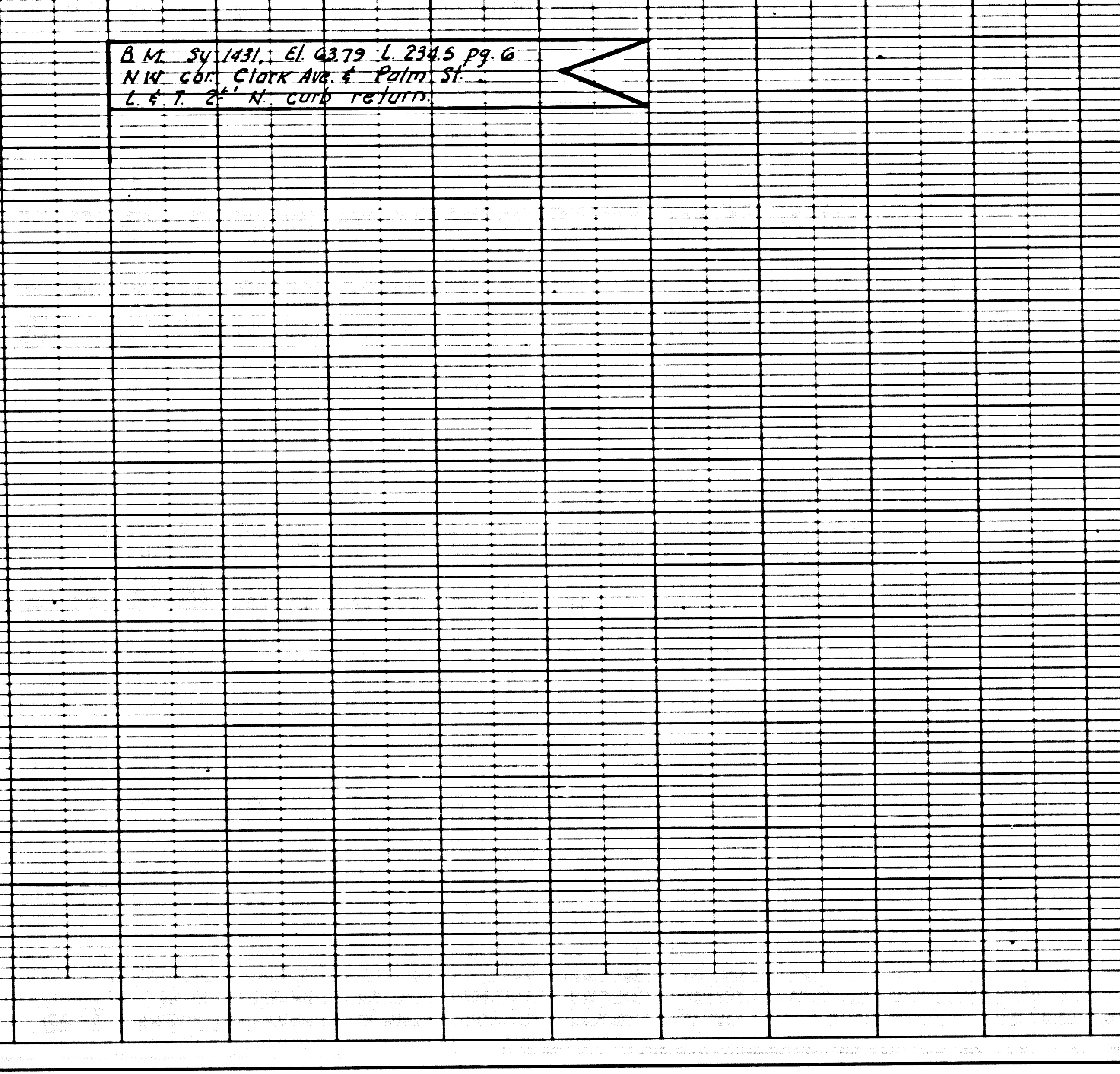
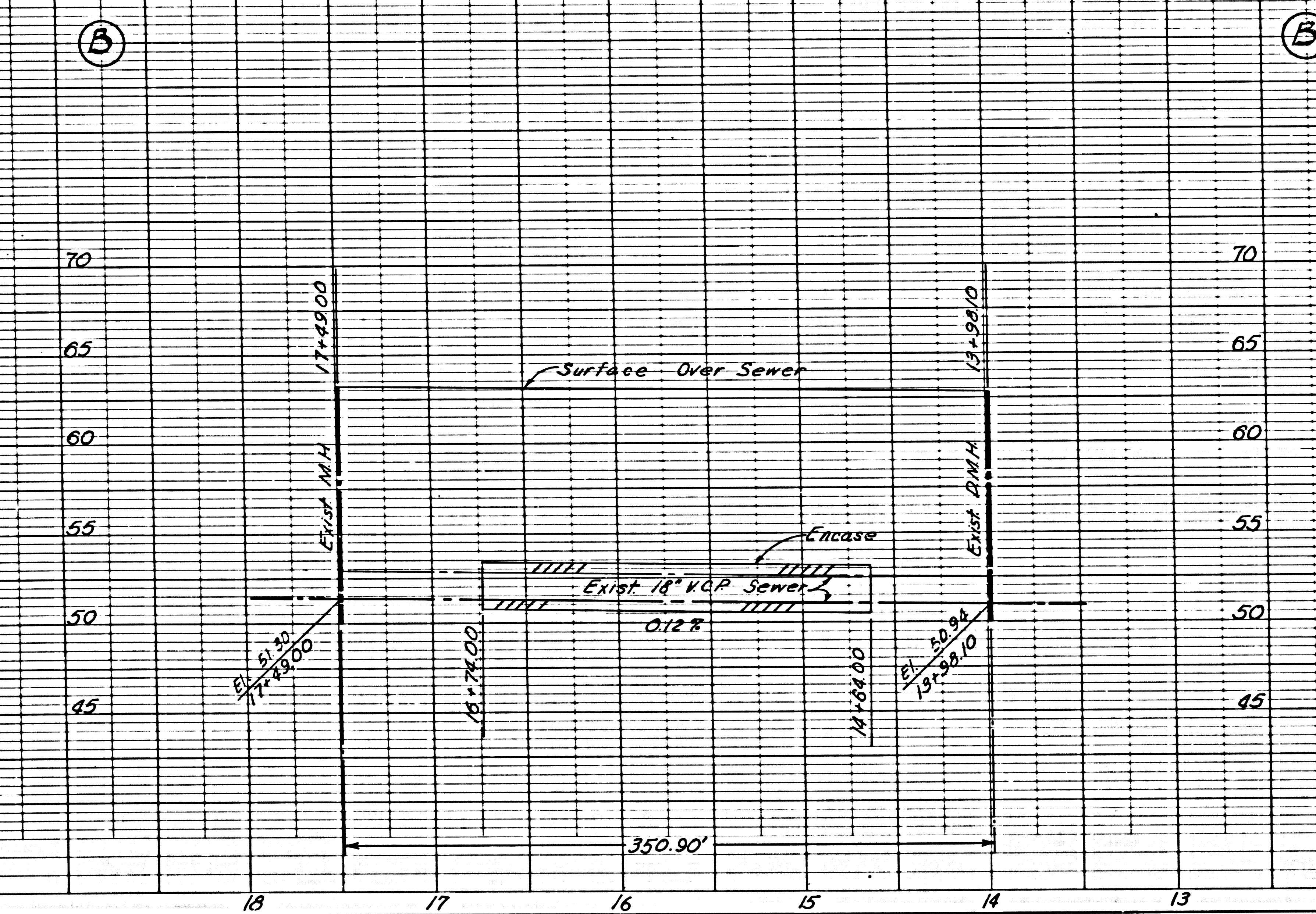
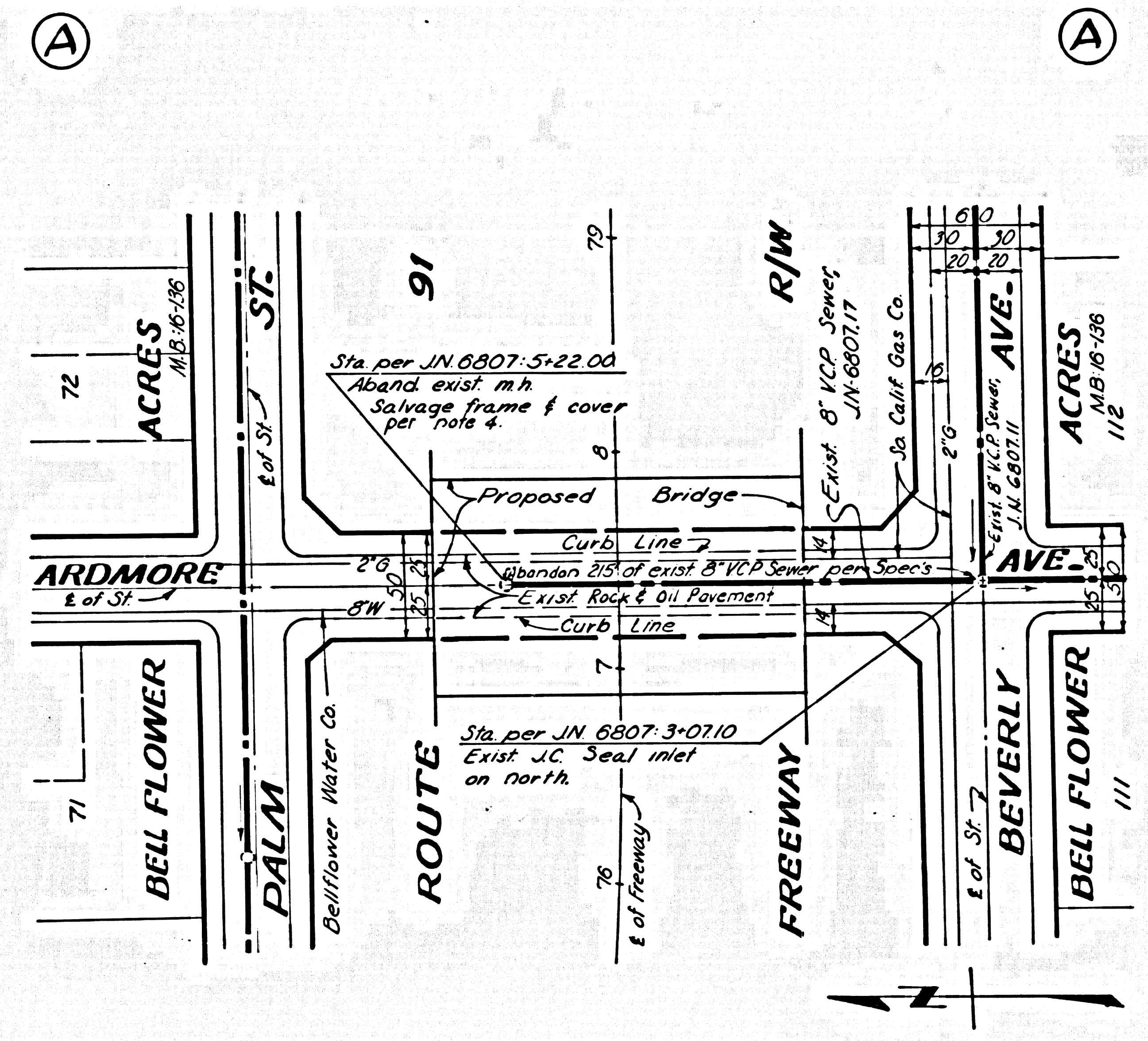
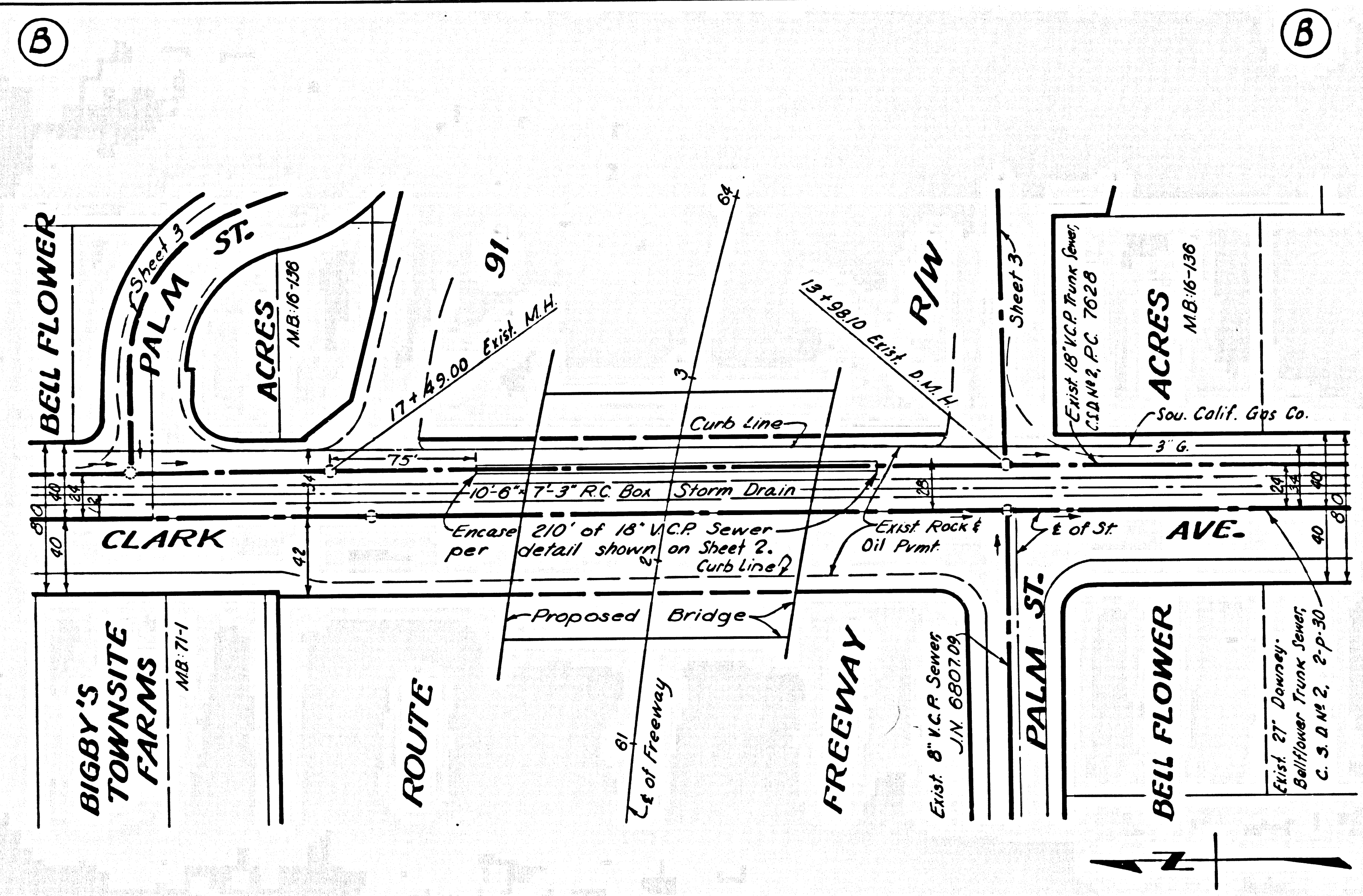
A.M. SY 1431, EL 6379 L 234.6 Dg. G
Clark Ave & Palm St, N.W. Corner.
L & T 4' 1/2" N. of curb return.

APP	STATE	FEDERAL PROJECT No	FISCAL YEAR	SHEET No	TOTAL SHEETS
VII	LA	91	R143-R170		

DESIGN ENGINEER
APPROVED

P.C. 7610
SHEET 4 OF 8 SHEETS

40117



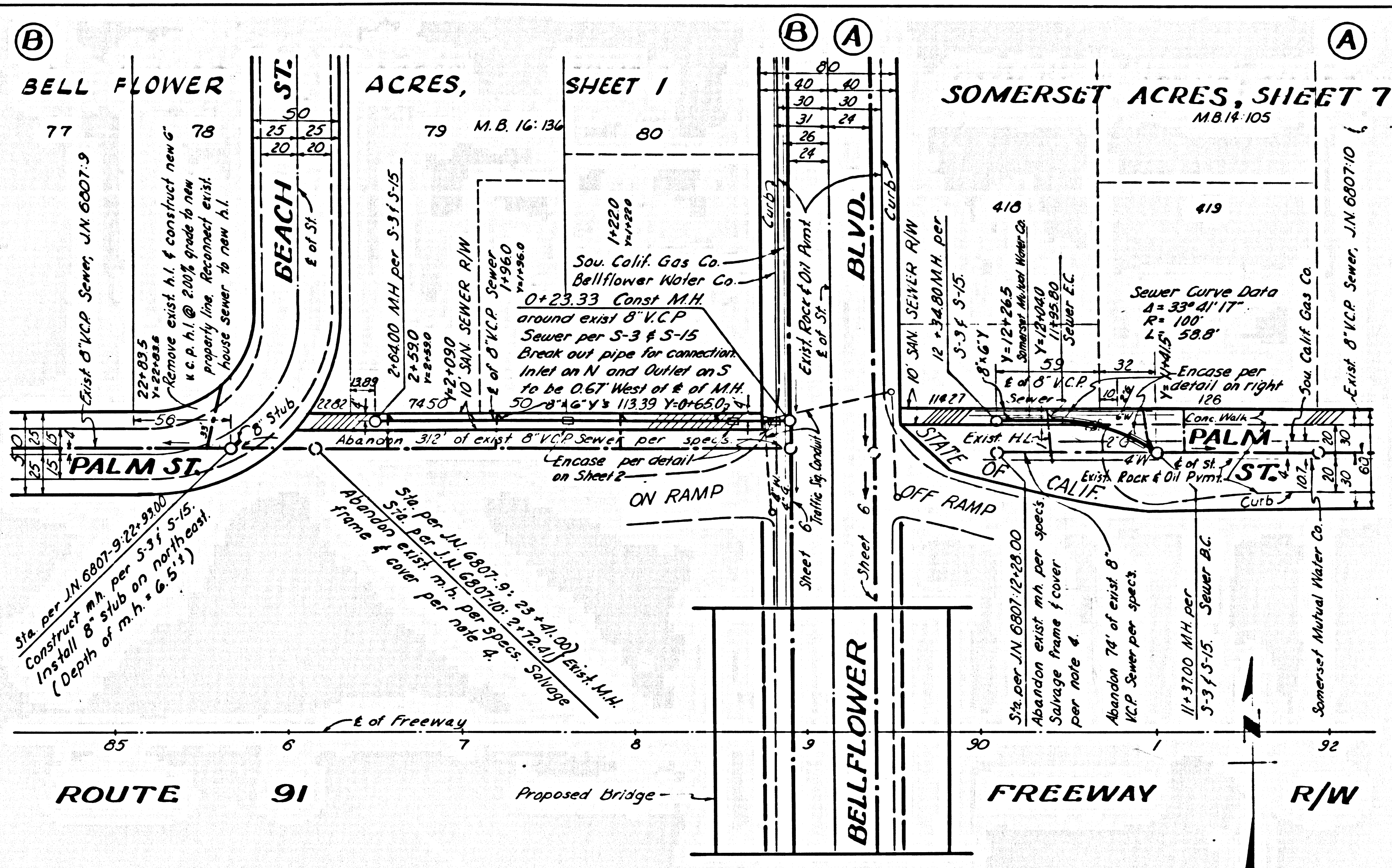
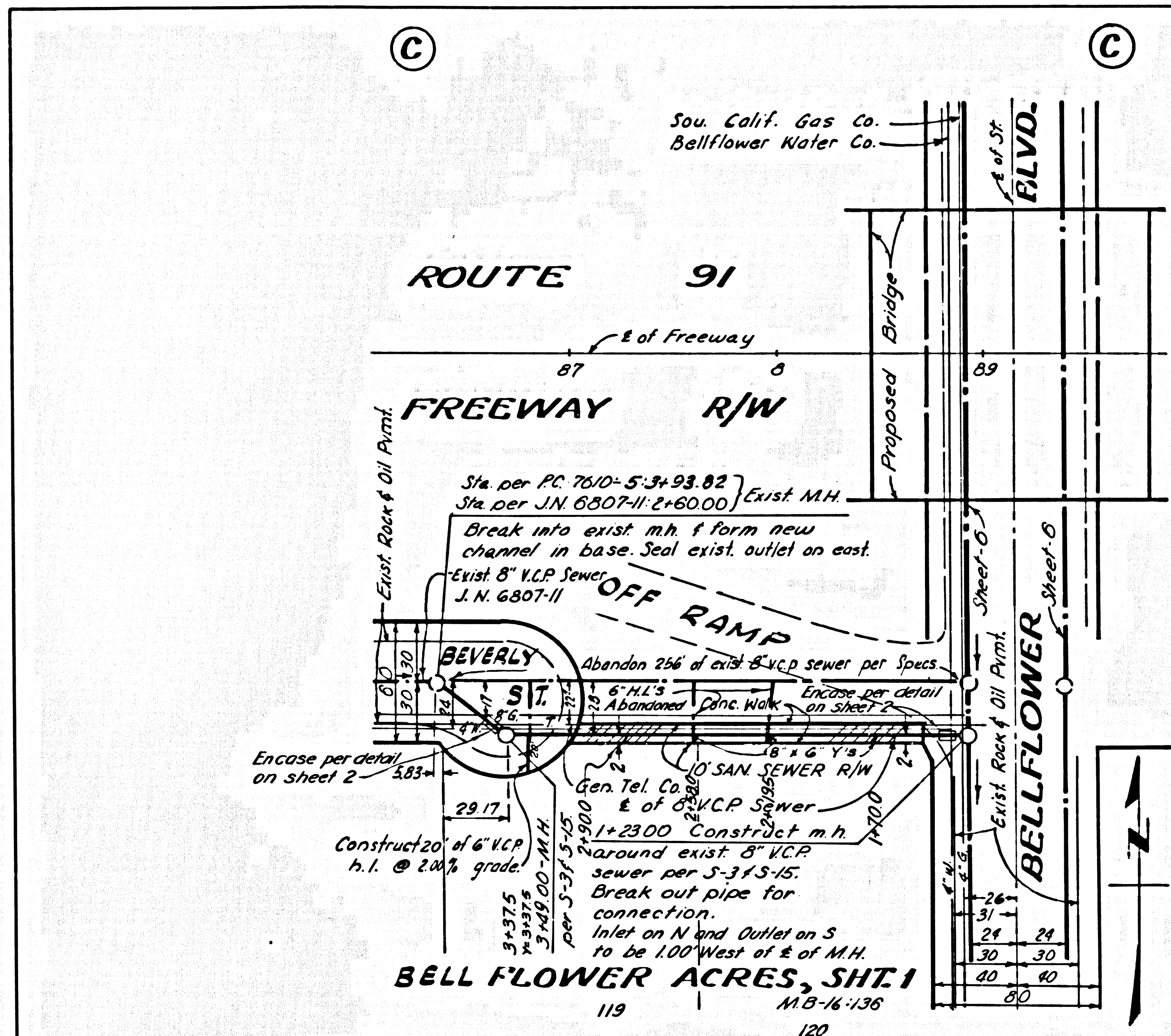
D.M. 34.1431, El. 43.79 - L. 234.5 pg. 6
N.W. cor. Clark Ave. & Palm St.
L & T 24' N curb return

DESIGN DEPT	INITIAL	DATE
DESIGNED		
TRACED		
CHECKED		
SUPERVISED BY	WATSON, D.	
RIGHT OF WAY		

PROJECT ENGINEER	DATE	DESIGN ENGINEER	DATE	APPROVAL	RECOMMENDED BY	DATE
------------------	------	-----------------	------	----------	----------------	------

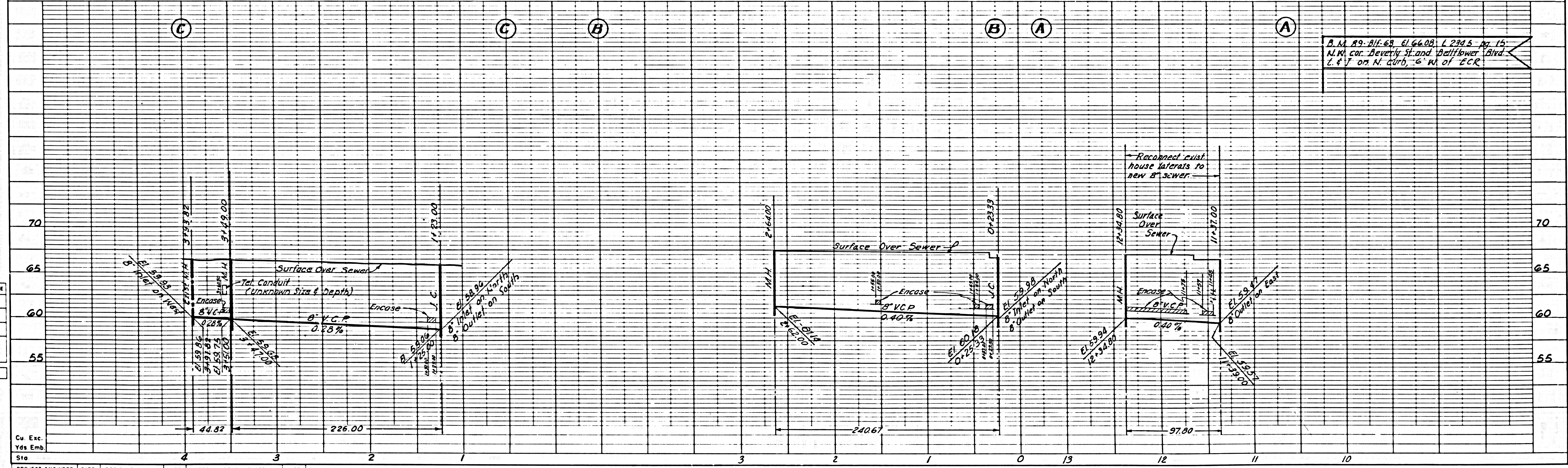
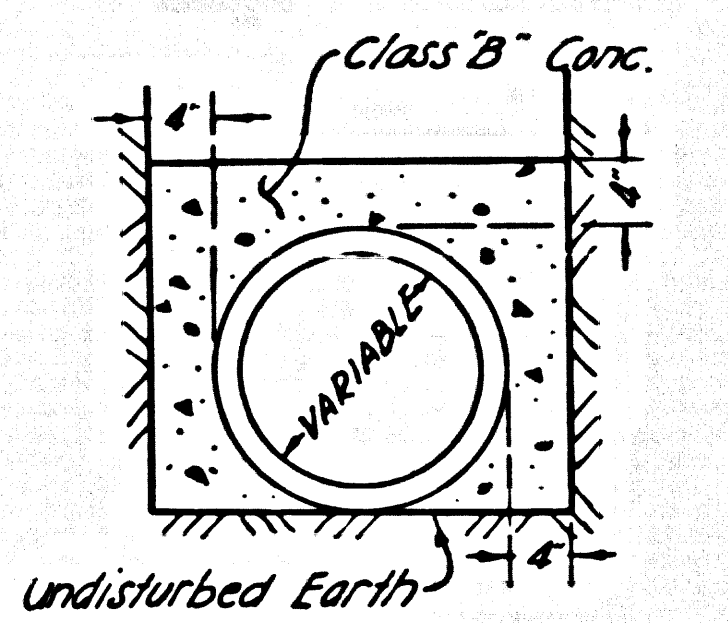
Cu. Exc.
Yds Emb.
Sta

STATE	FEDERAL PROJECT No.	FISCAL YEAR	SHEET No.	TOTAL SHEETS
CALIF.				
COUNTY	NO. 16	PROJECT	SHEET	TOTAL SHEETS
VII LA	91	R143-R170		



P.C. 7610
SHEET 6 OF 8 SHEETS

40118



A.M. 89-BIF-68, EL. 64.00, L. 234.5, TO 15'-N.M. cor. Beverly St. and Bellflower Blvd. L. & T. on N. curb, 6' N. of E.C.R.

DESIGNED BY
CHECKED BY
SUPERVISED BY
NATSON, D.

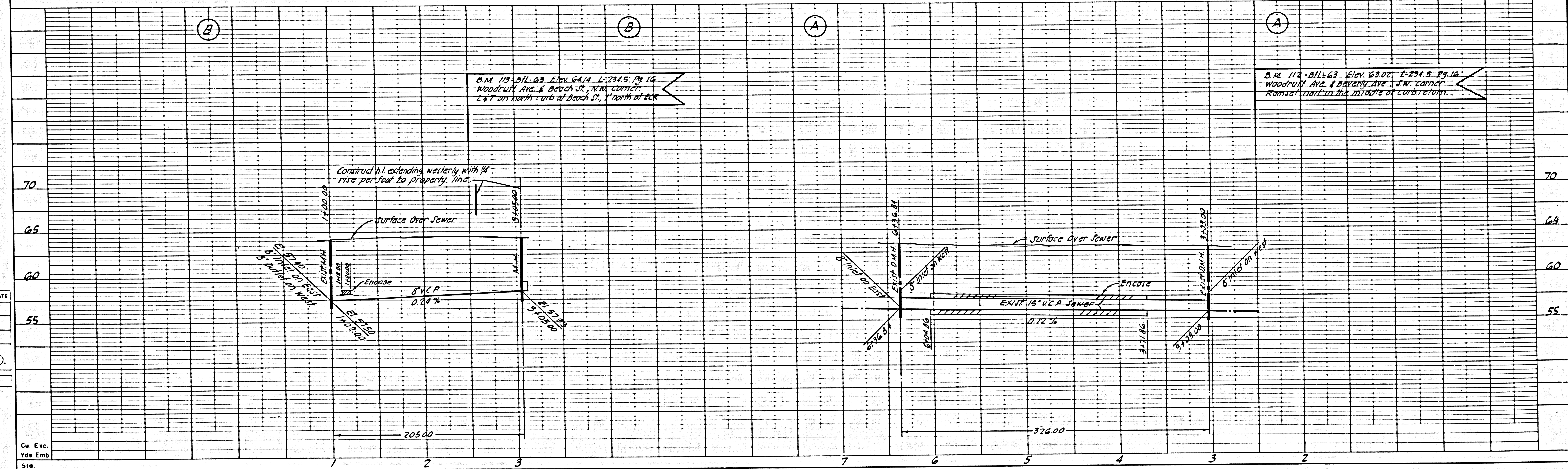
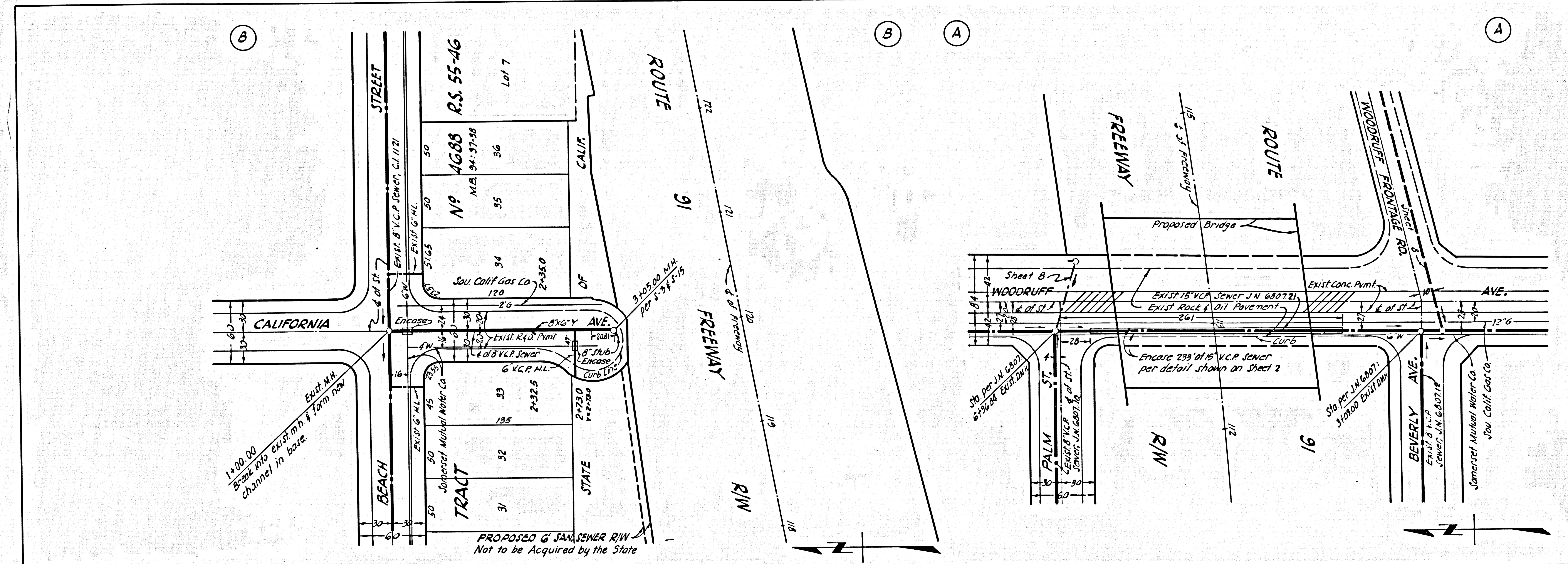
PROJECT ENGINEER	DATE	DESIGN ENGINEER	DATE	APPROVAL RECOMMENDED BY	DATE

DIST	COUNTY	AD. NO.	FED. PROJ. NO.	FISCAL YEAR	SHEET NO.	TOTAL SHEETS
VII	LA	91	R143-R110			

DEPUTY DISTRICT ENGINEER
 APPROVED _____

P. C. 7610
 SHEET 7 OF 8 SHEETS

40120



DESIGN DEPT	INITIAL	DATE
DESIGNED		
TRACED		
CHECKED		
SUPERVISED BY WATSON, D.		
RIGHT OF WAY		

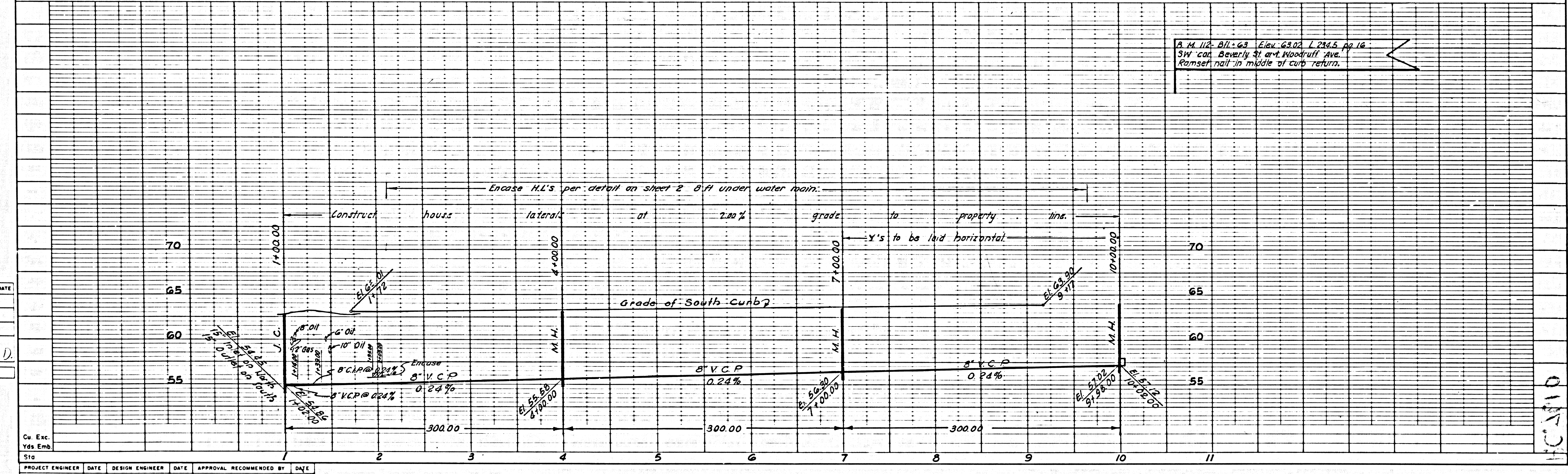
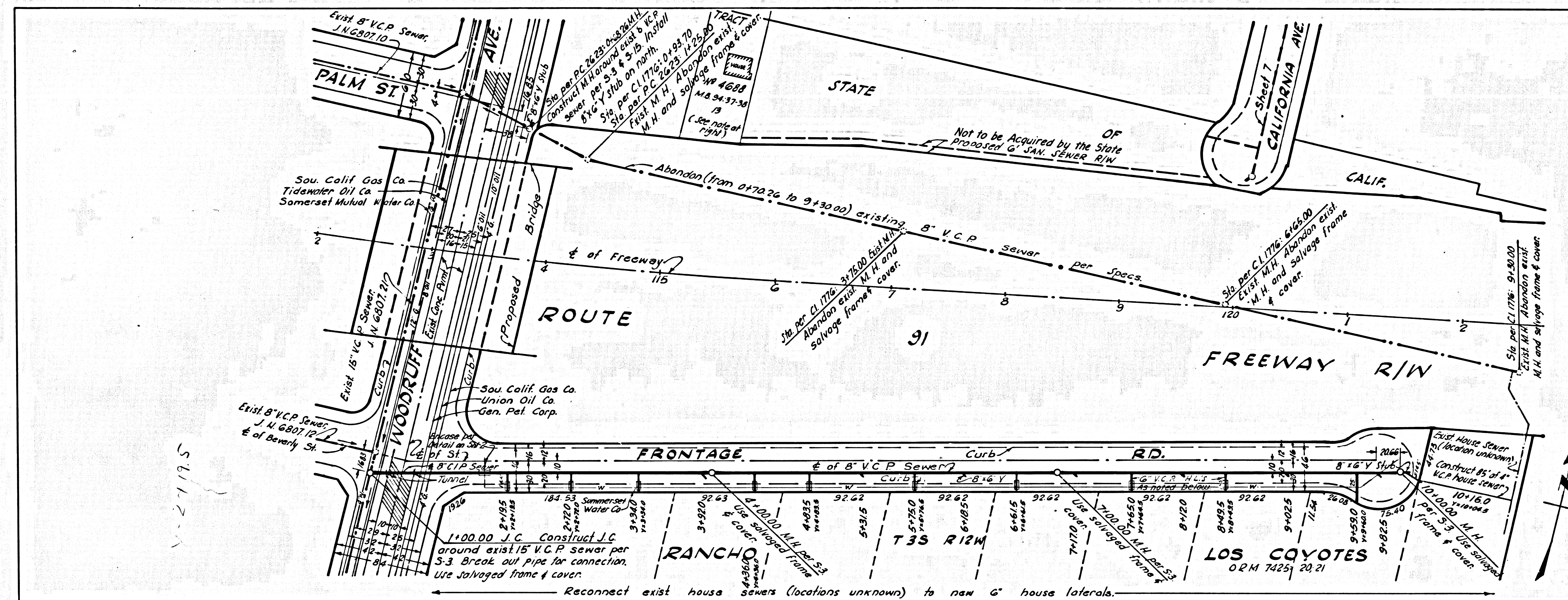
PROJECT ENGINEER	DATE	DESIGN ENGINEER	DATE	APPROVAL RECOMMENDED BY	DATE

STATE	FEDERAL PROJECT No.	FISCAL YEAR	SHEET No.	TOTAL SHEETS
CALIF.				
COUNTY	NO. 11	PROJECT	SHEET	TOTAL
VII LA	91	R143-R170		

R C. 7610
SHEET 8 OF 8 SHEETS

40121

Note: Sewer service to lot 13 is eliminated by freeway R/W.



DESIGN DEPT	INITIAL	DATE
DESIGNED		
TRACED		
CHECKED		
SUPERVISED BY	WATSON, D.	
RIGHT OF WAY		

PROJECT ENGINEER	DATE	DESIGN ENGINEER	DATE	APPROVAL RECOMMENDED BY	DATE

Cu. Exc.
Yds. Emb.
Stg.

HCAND