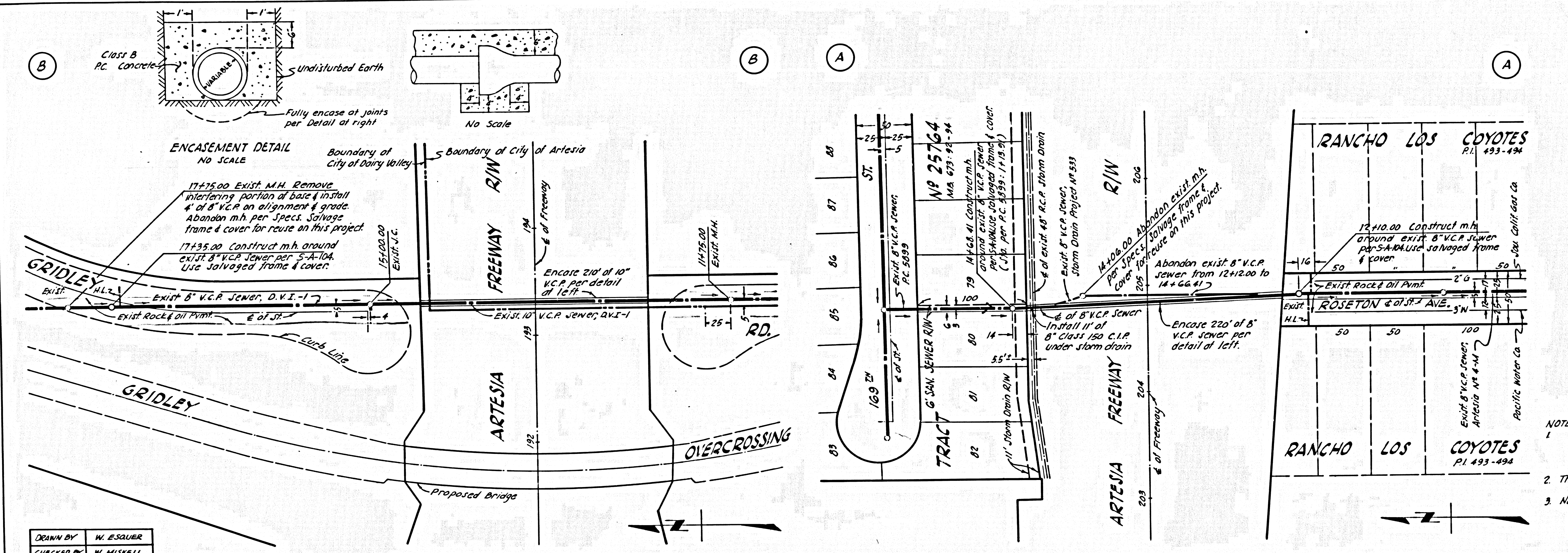


FEDERAL PROJECT No.	FISCAL YEAR	SHEET No.	TOTAL SHEETS
DIST. COUNTY 91			

APPROVED: *[Signature]* DEPUTY DISTRICT ENGINEER



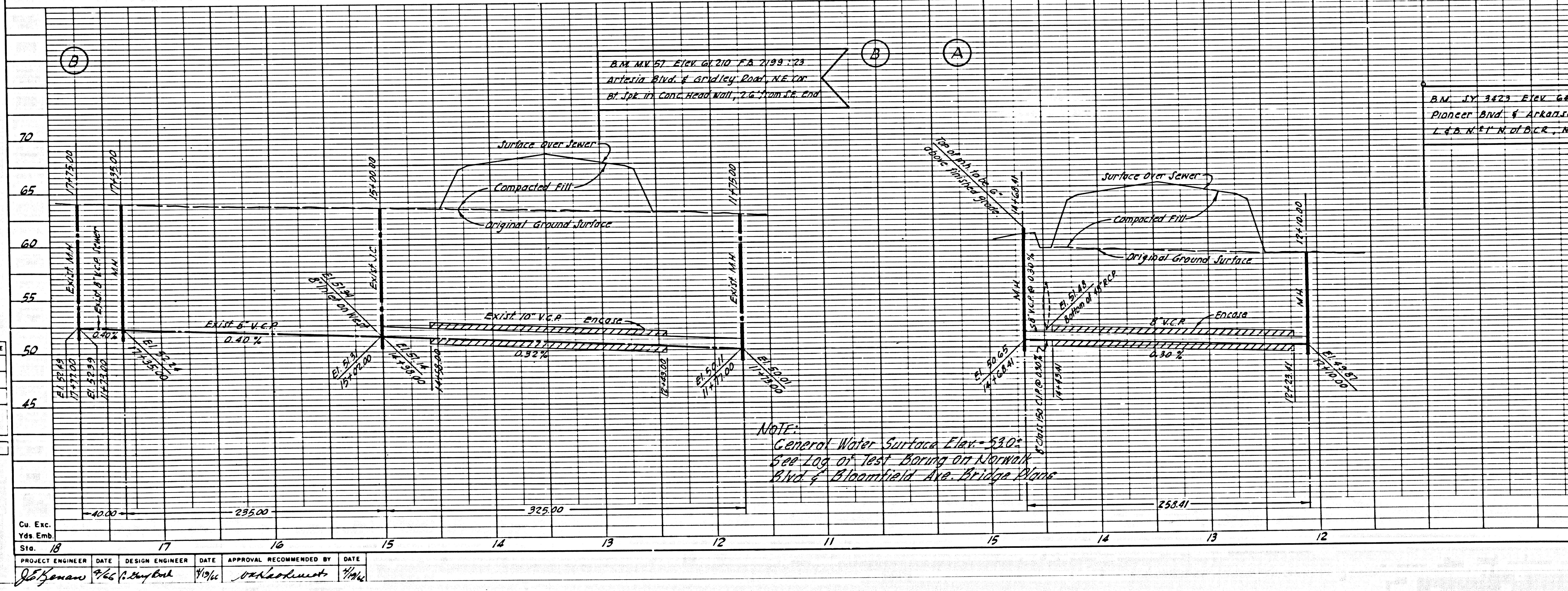
39914

**PLAN & PROFILE OF
SANITARY SEWERS
TO BE RECONSTRUCTED UNDER
P.C. 7615**

SHEET 1 OF 2 SHEETS APRIL, 1966
 SCALES: HORIZ.: 1" = 50', VERT.: 1" = 5' W.S. 33
 CITY OF ARTESIA, CALIFORNIA
 APPROVED: JOHN A. LAMBIE, CITY ENGINEER
 BY: *[Signature]* 4-11-66
 ASST. SANITATION DISTRICT ENGINEER (S.E. #7362)

APPROVED: JOHN D. PARKHURST, CHIEF ENGINEER
 COUNTY SANITATION DIST. # 2418
 BY: *[Signature]*
 OFFICIAL ENGINEER

SUBMITTED BY: *[Signature]* (S.E. # 14390)



DESIGNED BY: W. ESAUER
 CHECKED BY: W. MISKELL

PROJECT ENGINEER	DATE	DESIGN ENGINEER	DATE	APPROVAL RECOMMENDED BY	DATE
J. Kenan	3/66	[Signature]	4/66	[Signature]	4/66

DESIGN DEPT. INITIAL DATE
 DESIGNED []
 TRACED []
 CHECKED []
 SUPERVISED BY J. KENAN
 RIGHT OF WAY []

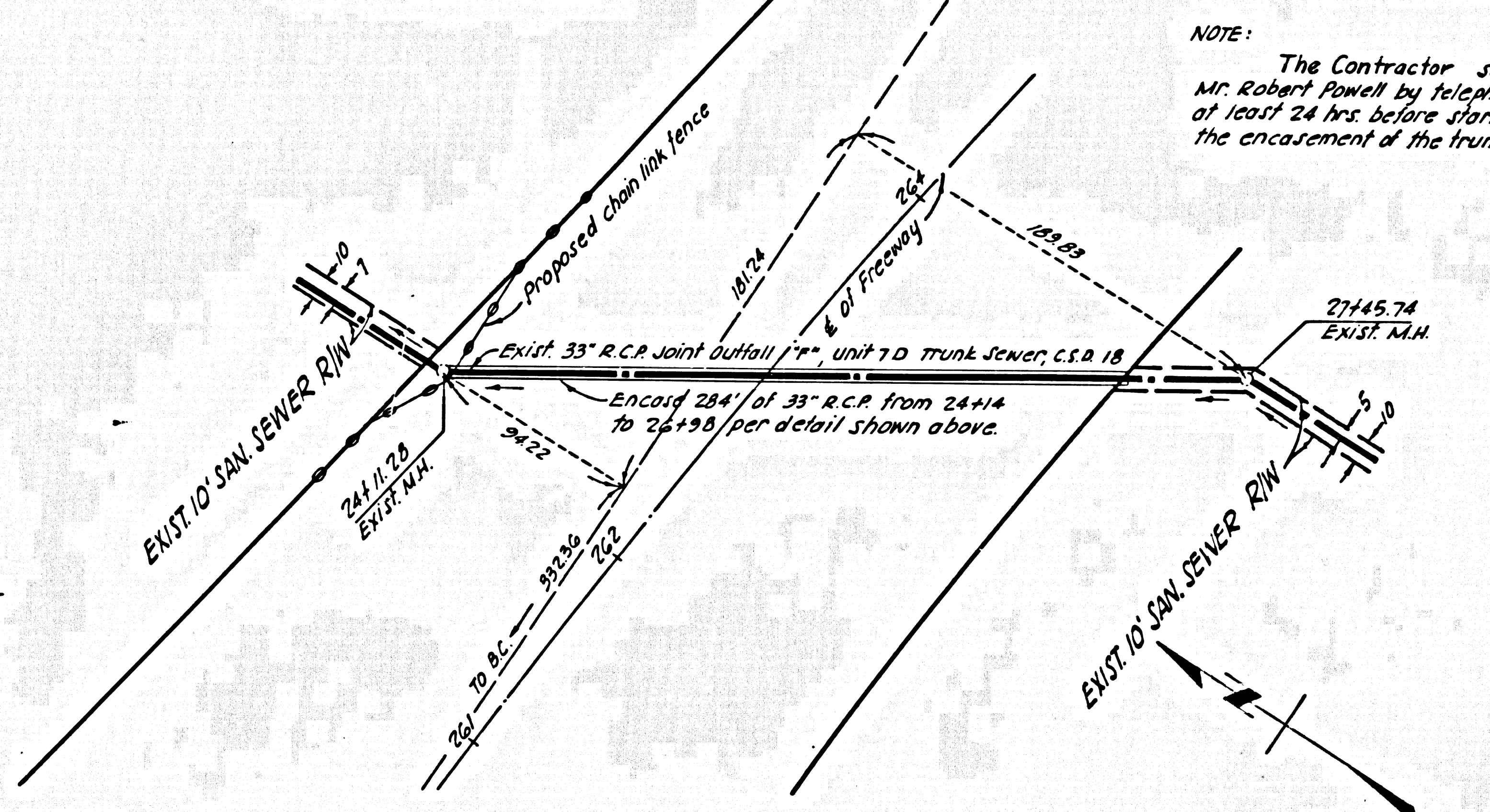
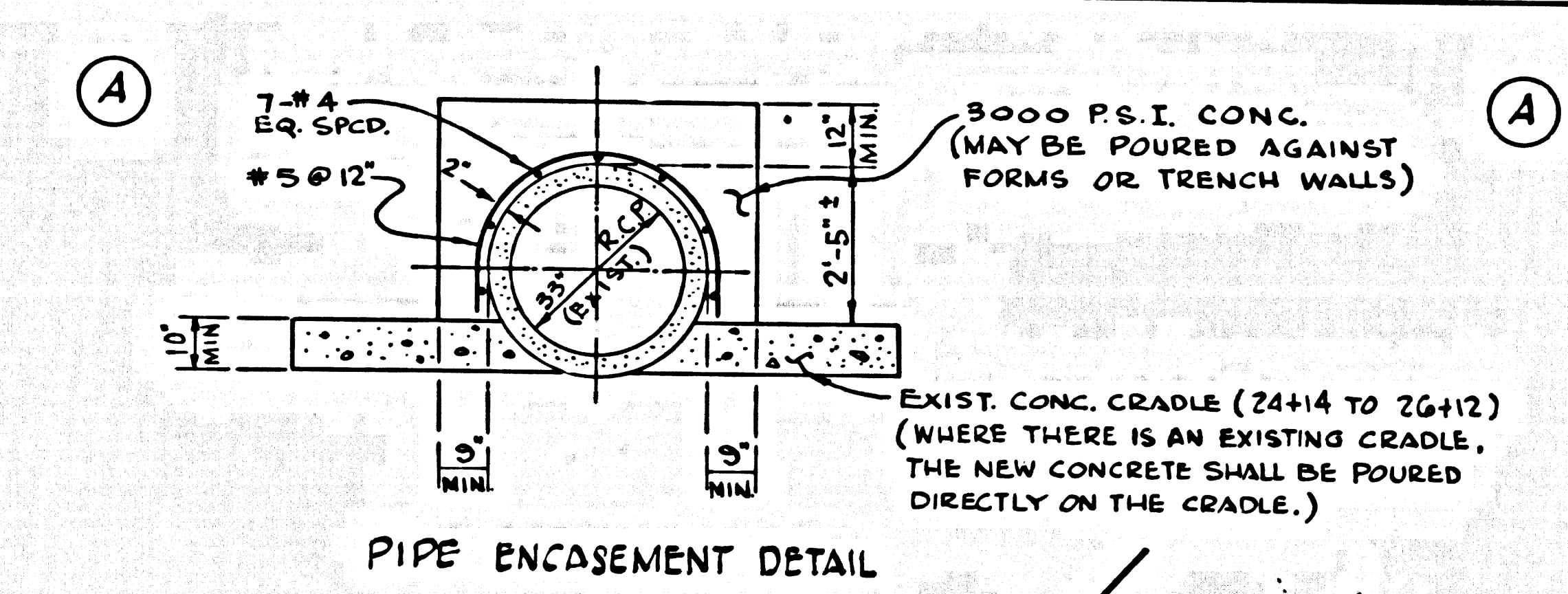
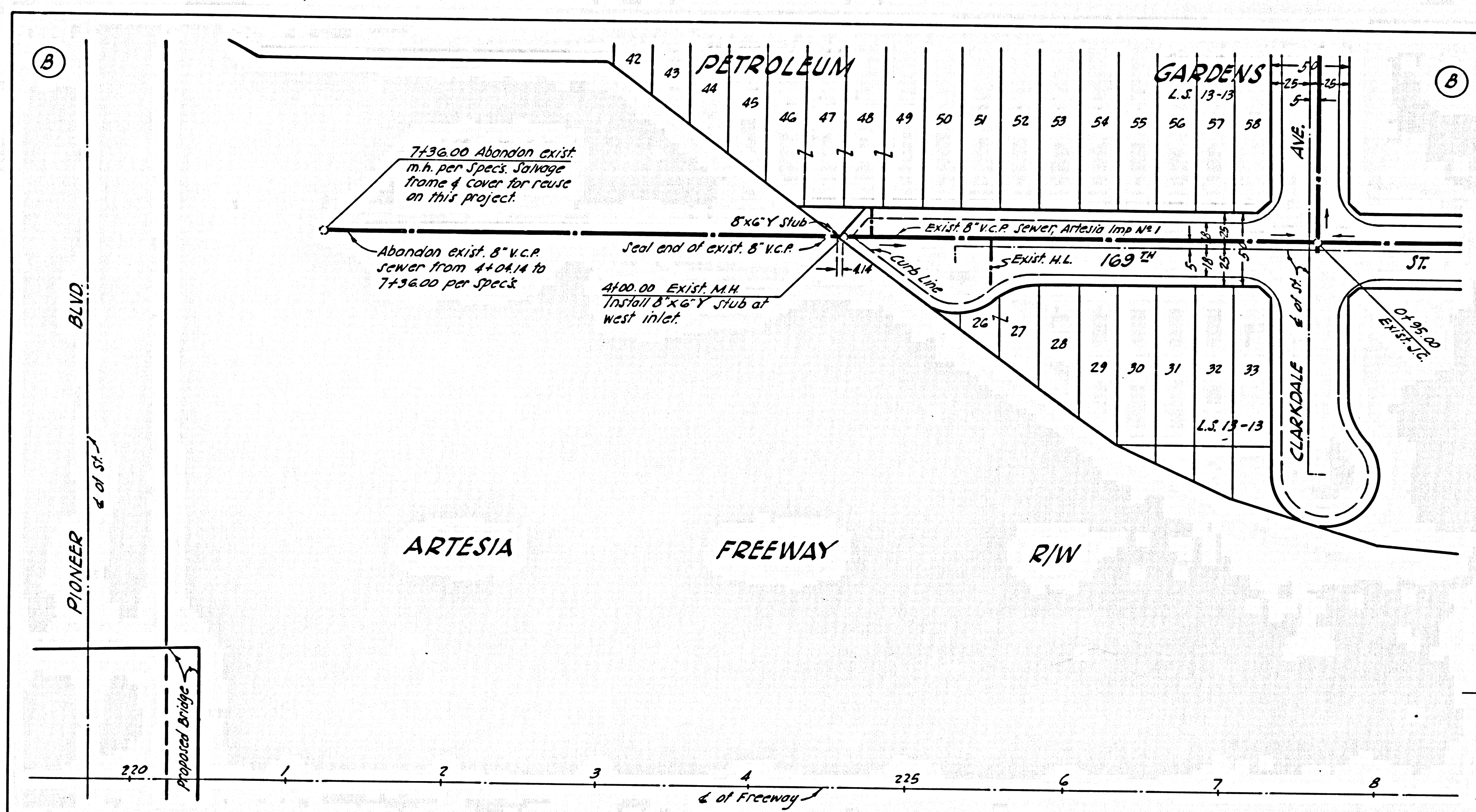
S.P.R.	STATE	FEDERAL PROJECT NO.	FISCAL YEAR	SHEET NO.	TOTAL SHEETS
7	LA	91	1964	2	2

APPROVED: *[Signature]*
 DEPUTY DISTRICT ENGINEER

PC 7615
 SHEET 2 OF 2 SHEETS

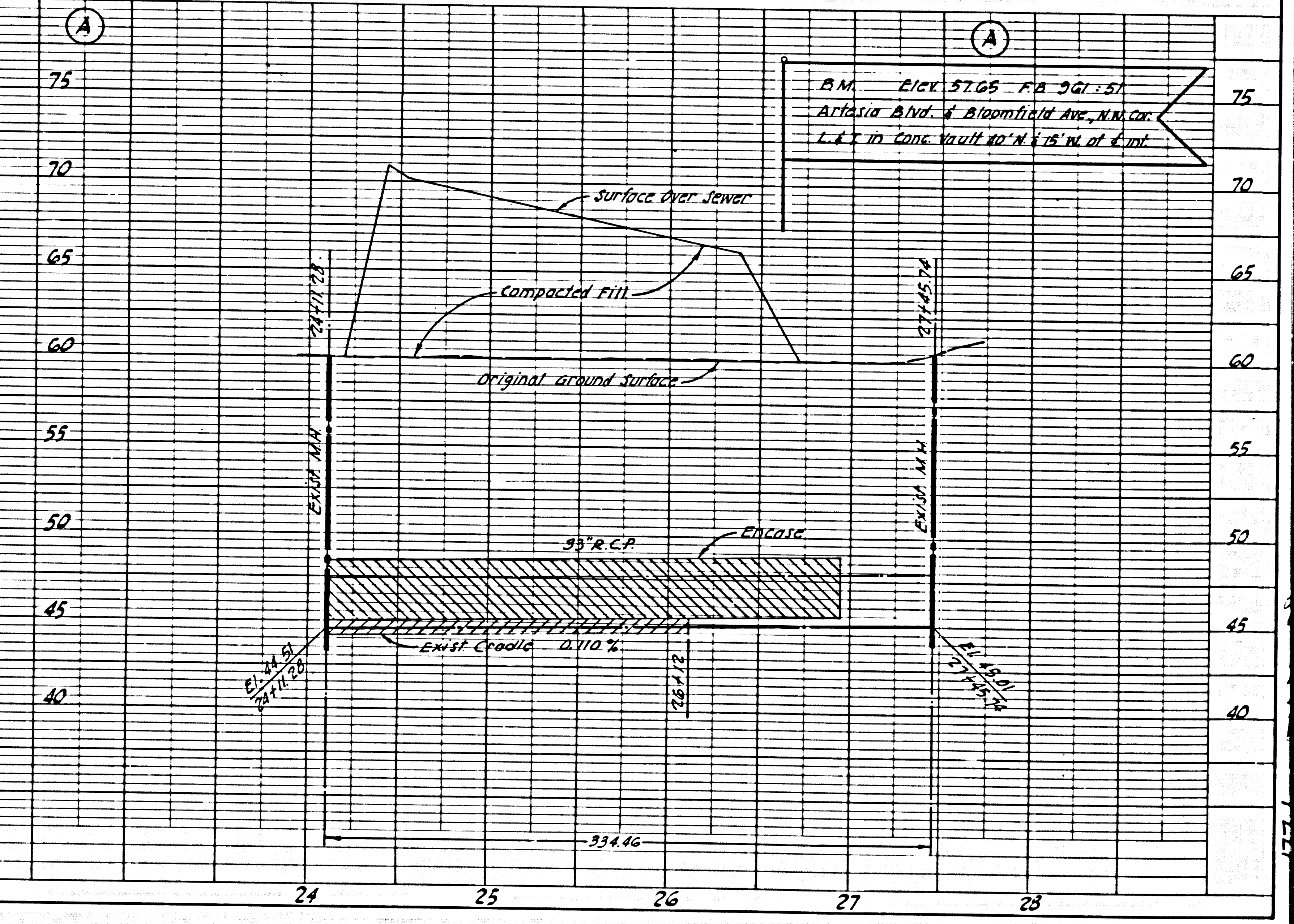
NOTE: The Contractor shall notify Mr. Robert Powell by telephone, 636-3097 at least 24 hrs. before starting work on the encasement of the trunk sewer.

39915



DESIGN DEPT.	INITIAL	DATE	DESIGNED	TRACED	CHECKED	SUPERVISED BY
						J. KENAN
RIGHT OF WAY						
Cu. Exc.						
Yds. Emb.						
STATION						
PROJECT ENGINEER	DATE	DESIGN ENGINEER	DATE	APPROVAL	RECOMMENDED BY	DATE
<i>[Signature]</i>	7/66	<i>[Signature]</i>	7/66		<i>[Signature]</i>	7/66

NOTE: General Water Surface Elev. = 53.0'. See Log of Test Borings On Norwalk Blvd. & Bloomfield Ave. Bridge Plans.



PROJECT ENGINEER DATE DESIGN ENGINEER DATE APPROVAL RECOMMENDED BY DATE