

B.M. By 1164 ELEV. 157.322
 117 N. Co. 53' E 1/4 B.C.A.
 N.E. Cor. Telegraph Rd. &
 Corrientes Rd. 587A North of 850'
 810 E. Intersection
 BASE LINE QUAD. 1965

WHITTIER BLDG. DIST. NO. 11

39294

PROFILE ALIGNMENT AND GRADE OF
SANITARY SEWERS PAGE 1
 TO BE CONSTRUCTED IN

GUNN AVENUE

PRIVATE CONTRACT NO. 7620

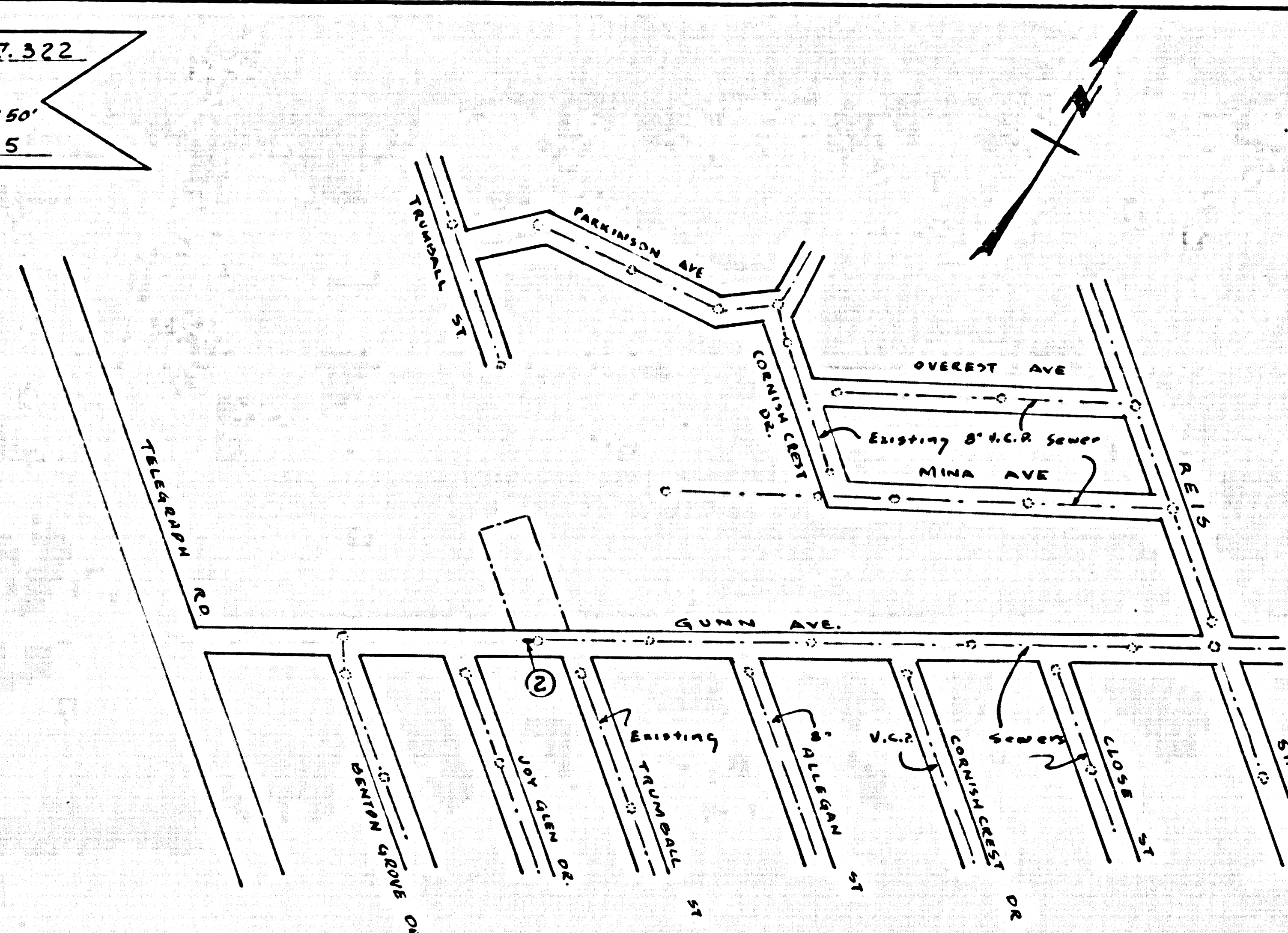
W.S. 34

1 SHEET 2 PAGES
 SCALE: VERT. 1" = 4' HORIZ. 1" = 40' April, 1966

PREPARED BY THE OFFICES OF

John J. Corbett
JOHN J. CORBETT
 REG. C. E. NO. 8426

FOR LEGEND SEE PLAN NO. S-1



INDEX MAP
 GUNN AVENUE
 P.C. 7620
 SCALE 1" = 200'

- NOTES:
1. PROVIDE STAKES ON THE PROPERTY LINE OR PROPERTY LINES PRODUCED AT RIGHT ANGLES TO THE SEWER LINE AT THE CENTER LINE OF EACH MANHOLE.
 2. NO REPRESENTATIVE OF THE COUNTY ENGINEER WILL SURVEY OR LAY OUT ANY PORTION OF THE WORK.
 3. THE PRIVATE ENGINEER SHALL FURNISH THE COUNTY ENGINEER WITH GRADE SHEETS AND STATIONING FOR ALL HOUSE LATERALS AND TRENCHES AND SHALL PROVIDE STAKES FOR THEM AT THEIR PROPER LOCATIONS WITH STATIONING PLAINLY MARKED. ALL HOUSE LATERALS SHALL BE CONSTRUCTED IN A STRAIGHT ALIGNMENT AT RIGHT ANGLES FROM THE MAIN LINE SEWER EXCEPT AS SHOWN ON THE PLANS. HOUSE LATERALS FROM CHIMNEYS SHALL NOT HAVE AN ANGLE OF LESS THAN 45° WITH THE MAIN LINE SEWER. ANY CHANGE IN ALIGNMENT SHALL BE REQUESTED IN WRITING BY THE PRIVATE ENGINEER.
 4. THE PRIVATE ENGINEER SHALL FURNISH THE HOUSE LATERAL DEPTH AT THE PROPERTY LINE BELOW THE TOP OF CURB ELEVATION FOR EACH HOUSE LATERAL ON THE GRADE SHEET.
 5. NO REVISIONS SHALL BE MADE IN THESE PLANS WITHOUT THE APPROVAL OF THE COUNTY ENGINEER.
 6. THE CONTRACTOR SHALL NOTIFY THE CONSTRUCTION DIVISION BY TELEPHONE, MADISON 9-0707, EXT. 8138, AT LEAST TWENTY-FOUR HOURS BEFORE STARTING ANY WORK UNDER THIS CONTRACT.
 7. MANHOLES SHALL BE BRICK SEWER STRUCTURES PER S-3 PRECAST CONCRETE MANHOLES PER S-5 OR S-6 MAY BE USED AS AN ALTERNATE IN LOCATIONS APPROVED BY THE COUNTY ENGINEER.
 8. USE STANDARD MANHOLE FRAMES AND COVERS, 2'-8" EXCEPT AS NOTED.
 9. MANHOLE TOPS IN UNIMPROVED AREAS TO BE 24" ABOVE FINISHED GRADE.
 10. USE EXTRA STRENGTH PIPE, ALL PIPE IS STANDARD DEPTH EXCEPT AS NOTED.
 11. USE MECHANICAL COMPRESSION JOINTS FOR ALL V.C.P. JOINTS PER SPEC., SECT. 30 - A 449
 12. ALL STATE AND LOCAL TRENCH SAFETY ORDERS SHALL BE RIGIDLY ENFORCED
 13. IF A POWER POLE IS WITHIN THREE FEET OF THE SEWER, THE SEWER SHALL BE ENCASED, PER S-2, TWO FEET ON EACH SIDE FROM THE POINT OF INTERFERENCE.
 14. IF DURING THE COURSE OF CONSTRUCTION IT IS DETERMINED THAT THERE IS LESS THAN FOUR FEET OF COVER OVER THE TOP OF A MAIN LINE OR HOUSE LATERAL V.C.P. SEWER WHICH IS NOT INDICATED ON THE PLANS, THE PIPE SHALL BE ENCASED PER S-2, UNLESS OTHERWISE APPROVED BY THE COUNTY ENGINEER.
 15. HOUSE LATERALS TO BE CONSTRUCTED WITH INVERTS AT 1/4" RISE PER FOOT TO THE PROPERTY LINE OR RESURFACE ALL TRENCHES WITHIN PAVED AREAS TO MEET L.A. COUNTY ROAD DEPT. OR CALIFORNIA STATE HIGHWAY REQUIREMENTS IN ACCORDANCE WITH PERMITS.
 16. FOR ALLOWABLE LEAKAGE TEST USE FORMULA NO. 2, SPEC., SEC. 54
 17. **The Contractor Shall Construct and Maintain a 4" Transit Water Line** by said DIST. ENGINEER'S NOTICE TO CONTRACTORS. The Existence and Approximate Location of Underground Utilities or Structures Shown on These Plans Were Determined by a SEARCH OF THE AVAILABLE PUBLIC RECORDS, TO THE BEST OF OUR KNOWLEDGE. THERE ARE NO EXISTING UNDERGROUND UTILITIES OR STRUCTURES SHOWN ON THESE PLANS. THE CONTRACTOR IS REQUIRED TO TAKE THE PRECAUTIONARY MEASURES TO PROTECT THE UTILITIES OR STRUCTURES SHOWN AND ANY OTHER UTILITIES OR STRUCTURES AT THE SITE. IT SHALL BE THE CONTRACTOR'S RESPONSIBILITY TO NOTIFY THE OWNERS OF THE UTILITIES OR STRUCTURES CONCERNED BEFORE DISTURBING WORK.
 18. IF IT IS DETERMINED DURING CONSTRUCTION THAT THERE IS LESS THAN 3' (MEASURED VERTICALLY) BETWEEN THE WATER LINE AND THE SEWER, ALL V.C.P. SHALL BE REPLACED WITH CLASS 150 C.I.P. OR APPROVED EQUAL WITH TYLON JOINTS OR APPROVED EQUAL.

COLLECT CHARGES AS INDICATED
E. J. Smith

NO CONNECTIONS FOR THE DISPOSAL OF INDUSTRIAL WASTES SHALL BE MADE TO SEWERS SHOWN ON THESE DRAWINGS WITHOUT WRITTEN PERMISSION FROM THE CHIEF ENGINEER AND GENERAL MANAGER OF THE COUNTY SANITATION DISTRICTS.

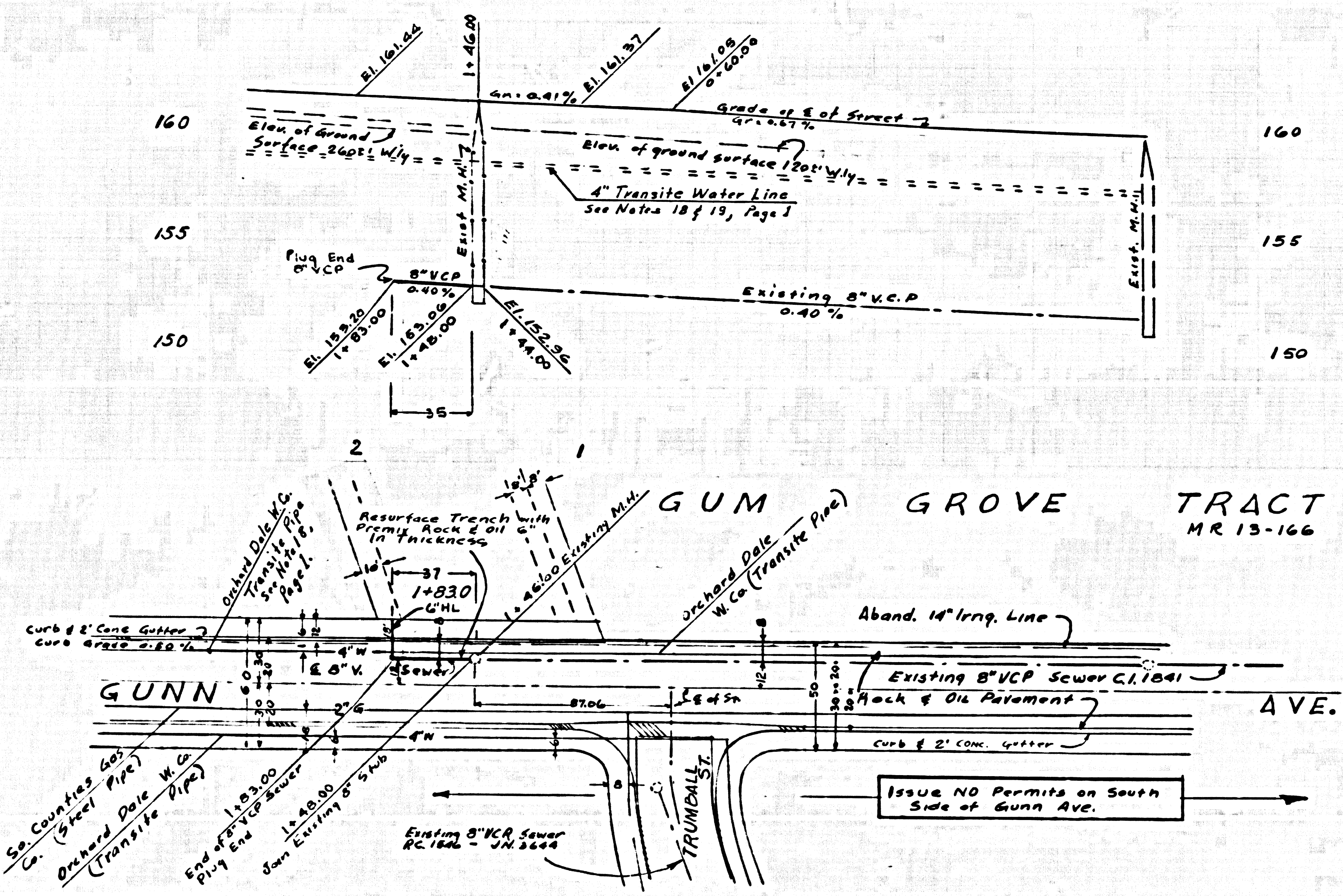
NOTE:
 GRADES TO WHICH THIS IMPROVEMENT IS TO BE CONSTRUCTED ARE SHOWN ON PLANS AND PROFILES. GRADE POINTS FOR TOP OF CURBS, CENTER LINE OF STREETS, OR CENTER LINE OF ALLEYS ARE SHOWN BY CIRCLES ON PROFILES AT ALL POINTS BETWEEN DESIGNATED ELEVATIONS ARE NOT ABOVE 1/4" & C.I. SEA LEVEL DATUM OF 1929.
 THIS DRAWING AND THE DATA HEREON ARE HEREBY MADE A PART OF THE SPECIFICATIONS WHICH SHALL BE CONSIDERED ACCORDING TO STANDARD SPECIFICATIONS DATED MAY 28, 1962, ON FILE IN THE OFFICE OF THE COUNTY ENGINEER AND SHALL BE PROSECUTED ONLY IN THE PRESENCE OF THE COUNTY ENGINEER.
 APPROVAL OF THIS PLAN BY THE COUNTY OF LOS ANGELES DOES NOT CONSTITUTE A REPRESENTATION AS TO THE ACCURACY OF THE LOCATION OF OR THE EXISTENCE OR NON-EXISTENCE OF ANY UNDERGROUND UTILITY PIPE, OR STRUCTURE WITHIN THE LIMITS OF THIS PROJECT. THIS NOTE APPLIES TO ALL PAGES.
 IF WORK IS TO BE DONE IN A STATE HIGHWAY, A PERMIT MUST BE OBTAINED FROM THE STATE OF CALIFORNIA, DIVISION OF HIGHWAYS, 126 SOUTH SPRING STREET, LOS ANGELES, CALIFORNIA.

COUNTY OF LOS ANGELES, CALIFORNIA
 JOHN A. LAMBIE, COUNTY ENGINEER
 J. D. PARKHURST, CHIEF ENGINEER
 CO. SAN. DIST. NO. 11
 APPROVED BY *E. J. Smith* ASSISTANT SANITATION ENGINEER
 APPROVED BY *J. D. Parkhurst* CHIEF ENGINEER

SUBMITTED BY *John J. Corbett*
 165 GRANITE WOODMAN ENGINEER A 88 10337
 CHECKED BY *John J. Corbett*
 REG. C. E. NO. 15731

J.N. 0367.44

Portion of Lot 7 of Gum Grove Tract



P.C. 7620 PAGE 2
 NO CHARGE FOR CONNECTIONS

39295

GUM GROVE TRACT
 MR 13-166

Issue NO Permits on South Side of Gunn Ave.