

B.M. BY 1140 ELEV. 256.745
 C.S. Man. in Well 12" down at or near
 & int. Santa Gertrudes Ave and
 Imperial Hwy. marked "AUX LA HABRA
 A 10"
 LA MIRADA QUAD. 19 65

COLLECT THE FOLLOWING REIMBURSEMENT CHARGES PRIOR TO ISSUING CONNECTION PERMITS

- (1) CITY REIMBURSEMENT CHARGE - LA MIRADA INTERMEDIATE SCHOOL NO. 3
- (2) COUNTY REIMBURSEMENT CHARGE - P.C. 4322 - CALL SANITATION DIVISION OF THE COUNTY ENGINEER -
- (3) \$ 300 PER FRONT FOOT, \$800.00 MIN., AS PER AGREEMENT P.C. 7622 R

LA MIRADA BLDG. DIST. NO. 408

PROFILE, ALIGNMENT AND GRADE OF **P.C. 7622 R**
SANITARY SEWERS PAGE 1

CONSTRUCTED IN
FRANCHEZ DRIVE 38831

PRIVATE CONTRACT NO. 7622 R

W.S. 34
 2 SHEETS, 4 PAGES

SCALE: HORIZ. 1" = 40' VERT. 1" = 4'

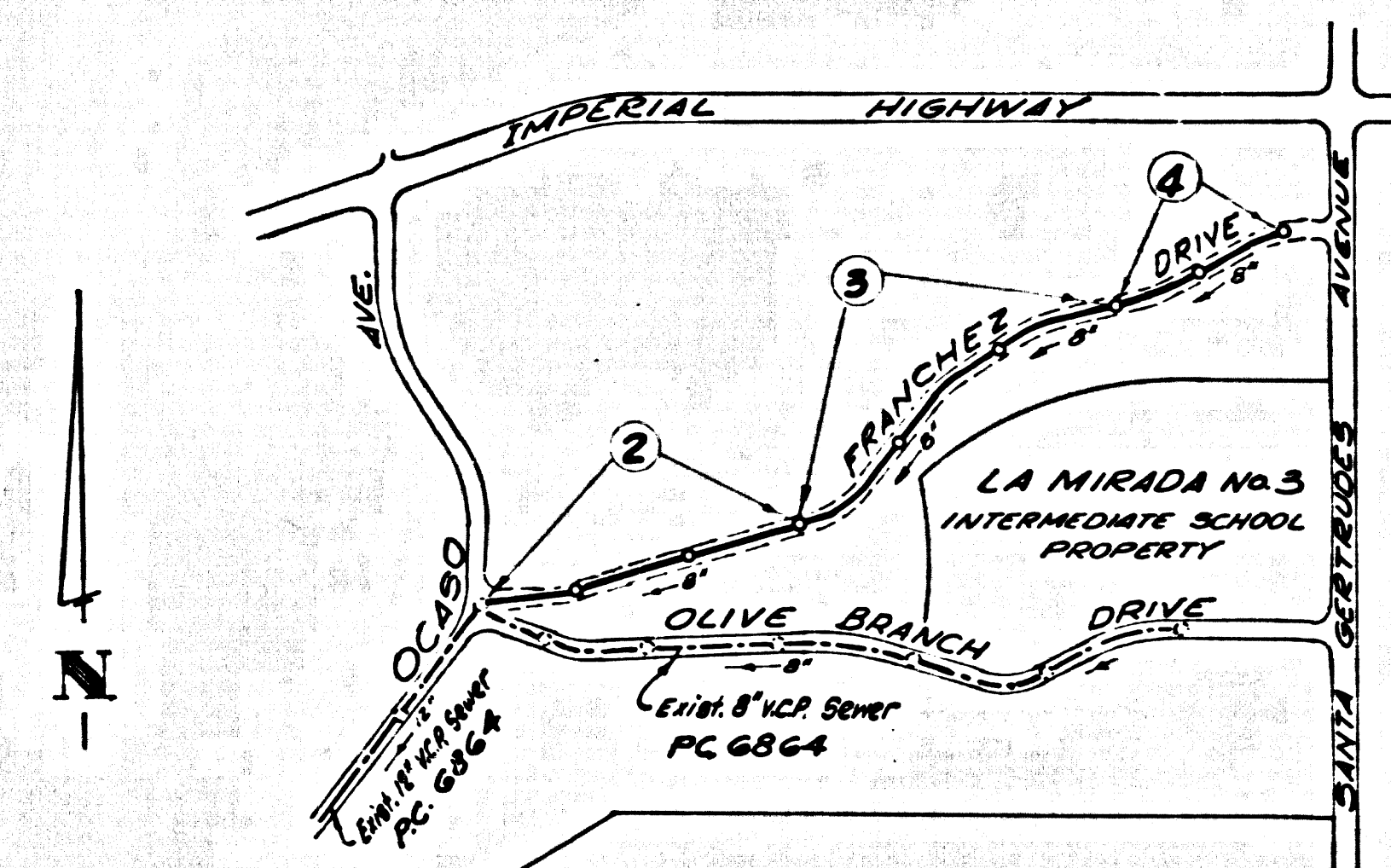
DATE: SEPTEMBER, 1966

PREPARED IN THE OFFICES OF

HAL HALLDIN ENGINEERING CO.

Hal Halldin
 REG. C.E. NO. 2002

FOR LEGEND SEE PLAN NO. S-1



INDEX MAP
 P.C. 7622 R
 FRANCHEZ DRIVE
 SCALE 1" = 600'

ISSUE NO CONSTRUCTION PERMIT UNTIL SEWER R/W HAS BEEN CLEARED.

REVISIONS:
 1. ALIGNMENT REVISED FROM STA. 18+00.00 TO STA. 22+34.52
Hal Halldin NOV 3, 1966
 REG. C.E. NO. 2002 DATE
 11/16/66 *Charles P. McCallin*
 APPROVED BY

NO CONNECTIONS FOR THE DISPOSAL OF INDUSTRIAL WASTES SHALL BE MADE TO SEWERS SHOWN ON THESE DRAWINGS WITHOUT WRITTEN PERMISSION FROM THE CHIEF ENGINEER AND GENERAL MANAGER OF THE COUNTY SANITATION DISTRICT

REVISIONS:
 1. ALIGNMENT REVISED FROM STA. 18+06.66 TO STA. 20+42.58
Hal Halldin NOV 11, 1966
 REG. C.E. NO. 2002 DATE
 11/16/66 *Charles P. McCallin*
 APPROVED BY

COLLECT CHARGES AS INDICATED
Hal Halldin

NOTE:
 SEWERS TO WHICH THIS IMPROVEMENT IS TO BE CONSTRUCTED AND SHOWN ON PLANS AND PROFILES, GRADE POINTS FOR TOP OF CURBS, CENTER LINE OF ALLEYS ARE SHOWN BY CIRCLES ON PROFILES. AT ALL POINTS BETWEEN DESIGNATED POINTS THE GRADE SHALL BE ESTABLISHED AS TO COMPOSE TO A STRAIGHT LINE DRAWN BETWEEN SAID DESIGNATED POINTS. ELEVATIONS ARE IN FEET ABOVE U.S.C. & G.S. MEAN SEA LEVEL DATUM OF 1929.
 REVISIONS ARE IN RED. ALL CHANGES MADE AS PART OF THE IMPROVEMENTS ARE A PART OF THE CONTRACT. THIS DRAWING AND THE DATA HEREON SHALL BE CONSIDERED ACCORDING TO STANDARD SPECIFICATIONS DATED MAY 23, 1962, ON FILE IN THE OFFICE OF THE COUNTY ENGINEER AND SHALL BE MODIFIED ONLY IN THE PRESENCE OF THE CITY ENGINEER.
 IF WORK IS TO BE DONE IN A STREET HIGHWAY, A PERMIT MUST BE OBTAINED FROM THE STATE OF CALIFORNIA, DIVISION OF HIGHWAYS, 126 SOUTH SPRING STREET, LOS ANGELES, CALIFORNIA.
 APPROVAL OF THIS PLAN BY THE CITY OF LA MIRADA DOES NOT CONSTITUTE AN REPRESENTATION AS TO THE ACCURACY OF THE LOCATION OR OF THE EXISTENCE OR NON-EXISTENCE OF ANY UNDERGROUND UTILITY PIPE, OR STRUCTURE WITHIN THE LIMITS OF THIS PROJECT. THIS NOTE APPLIES TO ALL PAGES.
 IF WORK IS TO BE DONE IN A STREET HIGHWAY, A PERMIT MUST BE OBTAINED FROM THE STATE OF CALIFORNIA, DIVISION OF HIGHWAYS, 126 SOUTH SPRING STREET, LOS ANGELES, CALIFORNIA.

CITY OF LA MIRADA, CALIFORNIA
 JOHN A. LAMBIE, CITY ENGINEER J. D. PARKHURST, CHIEF ENGINEER
 CO. SAN. DIST. NO. 1 B
 APPROVED BY *Richard S. Kelly* APPROVED BY *John D. Parkhurst*
 SANITATION ENGINEER OFFICE ENGINEER
 SUBMITTED BY *Richard S. Kelly*
 LOS CERRITOS SPECIAL ENGINEER R.C.E. 10327
 CHECKED BY *Charles P. McCallin*
 REG. C.E. NO. 16731

NO CONNECTIONS FOR THE DISPOSAL OF INDUSTRIAL WASTES SHALL BE MADE TO SEWERS SHOWN ON THESE DRAWINGS WITHOUT WRITTEN PERMISSION FROM THE CHIEF ENGINEER AND GENERAL MANAGER OF THE COUNTY SANITATION DISTRICT

