

B.M. 5 G. 1636 ELEV. 550.753
 Los Angeles County Road Dept.
 S. M. Top 1/2 Ely of Curb Return @
 S. Ely Cor. Fuller on Road & Santa Ana St.
 S. 18' Sly. & 65' Ely. & Intersection.
 OTTERBEIN QUAD. 1963

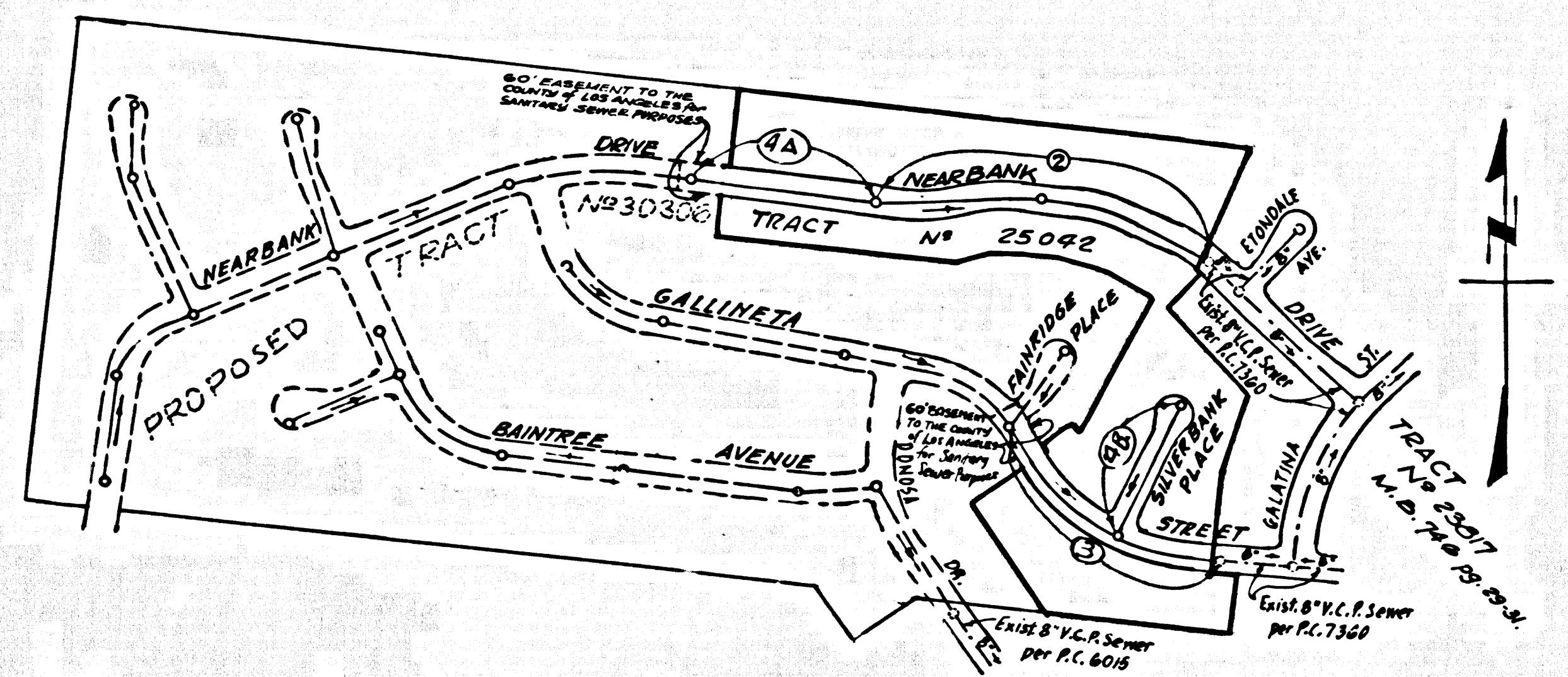
DOUBLE SCALE
 LA PUENTE BLDG. DIST. NO. 2

PROFILE, ALIGNMENT AND GRADE OF P.C. 7624
 SANITARY SEWERS PAGE 1

TRACT N° 25042
 PRIVATE CONTRACT NO. 7624

W.S. 38
 2 SHEETS, 4 PAGES
 SCALE: VERT. 1" = 8'
 HORIZ. 1" = 40'
 SEPT. 1966
 PREPARED IN THE OFFICES OF
 CONSOLIDATED ENGINEERING COMPANY
 1101 S. ROBERTSON BLVD., LOS ANGELES, CALIF.
 REG. C. E. NO. 10315

38946



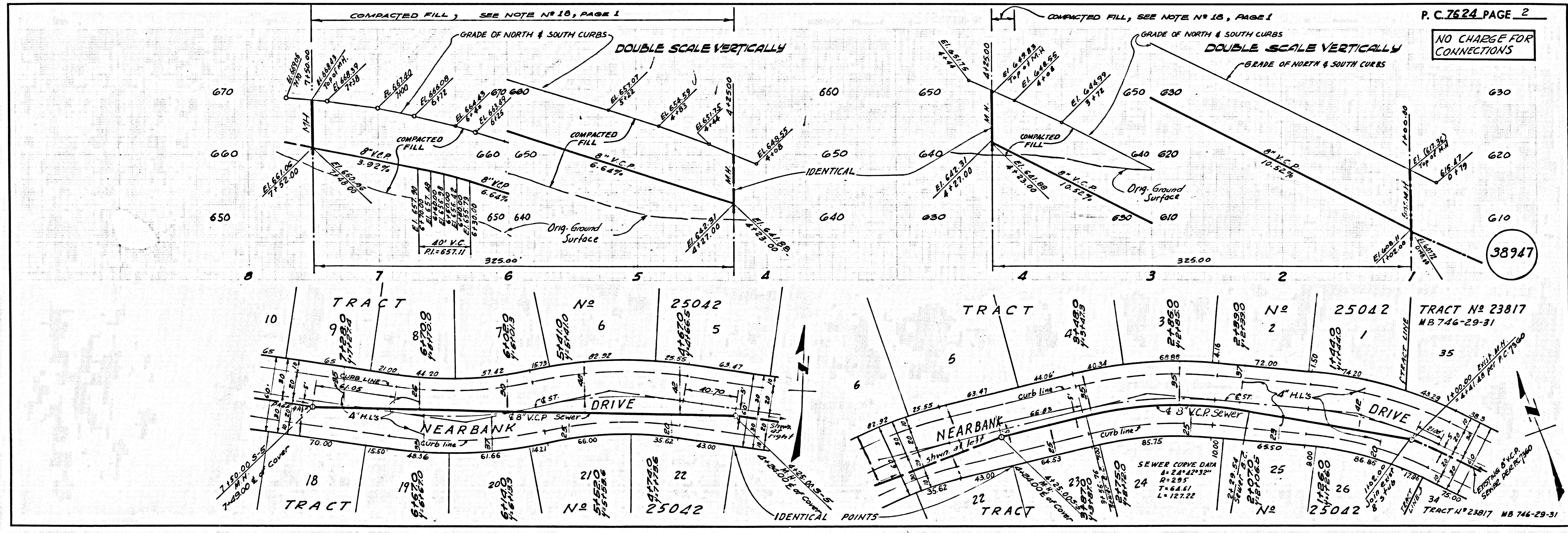
INDEX MAP
 1" = 300'
 P.C. 7624
 TRACT N° 25042

- NOTE:
- PROVIDE STAKES ON THE PROPERTY LINE OR PROPERTY LINES PRODUCED AT RIGHT ANGLES TO THE SEWER LINE AT THE CENTER LINE OF EACH MANHOLE.
 - NO REPRESENTATIVE OF THE COUNTY ENGINEER WILL SURVEY OR LAY OUT ANY PORTION OF THE WORK.
 - THE PRIVATE ENGINEER SHALL FURNISH THE COUNTY ENGINEER WITH GRADE SHEETS AND STATIONING FOR ALL HOUSE LATERALS AND "Y" BRANCHES AND SHALL PROVIDE STAKES FOR THEM AT THEIR PROPER LOCATIONS WITH STATIONING PLAINLY MARKED. ALL HOUSE LATERALS SHALL BE CONSTRUCTED IN A STRAIGHT ALIGNMENT AT RIGHT ANGLES FROM THE MAIN LINE SEWER EXCEPT AS SHOWN ON THE PLANS. HOUSE LATERALS FROM CHIMNEYS SHALL NOT HAVE AN ANGLE OF LESS THAN 45° WITH THE MAIN LINE SEWER. ANY CHANGE IN ALIGNMENT SHALL BE REQUESTED IN WRITING BY THE PRIVATE ENGINEER.
 - THE PRIVATE ENGINEER SHALL FURNISH THE HOUSE LATERAL DEPTH AT THE PROPERTY LINE BELOW THE TOP OF CURB ELEVATION FOR EACH HOUSE LATERAL ON THE GRADE SHEET.
 - NO REVISIONS SHALL BE MADE IN THESE PLANS WITHOUT THE APPROVAL OF THE COUNTY ENGINEER.
 - THE CONTRACTOR SHALL NOTIFY THE CONSTRUCTION DIVISION BY TELEPHONE, MADISON 9-4747, EXT. 81551, AT LEAST TWENTY-FOUR HOURS BEFORE STARTING ANY WORK UNDER THIS CONTRACT.
 - MANHOLES SHALL BE BRICK SEWER STRUCTURES PER S. 3. PRECAST CONCRETE MANHOLES PER S. 5 OR S. 6 MAY BE USED AS AN ALTERNATE IN LOCATIONS APPROVED BY THE COUNTY ENGINEER.
 - USE STANDARD MANHOLE FRAMES AND COVERS, S. 15.
 - MANHOLE TOPS IN UNIMPROVED RIGHTS-OF-WAY TO BE SIX INCHES ABOVE FINISHED GRADE.
 - USE EXTRA STRENGTH PIPE, ALL PIPE IS STANDARD DEPTH EXCEPT AS NOTED.
 - USE MECHANICAL COMPRESSION JOINTS FOR ALL V.C.P. JOINTS PER SPECS. SECS. 5A, 16 & 17.
 - IF A POWER POLE IS WITHIN THREE FEET OF THE SEWER, THE SEWER SHALL BE ENCASED, PER S. 23, TWO FEET ON EACH SIDE FROM THE POINT OF INTERFERENCE.
 - IF DURING THE COURSE OF CONSTRUCTION IT IS DETERMINED THAT THERE IS LESS THAN FOUR FEET OF COVER OVER THE TOP OF A MAIN LINE OR HOUSE LATERAL V.C.P. SEWER WHICH IS NOT INDICATED ON THE PLANS, THE PIPE SHALL BE ENCASED PER S. 23, UNLESS OTHERWISE APPROVED BY THE COUNTY ENGINEER.
 - HOUSE LATERALS TO BE CONSTRUCTED WITH INVERTS AT PROPERTY LINE & FEET BELOW CURB GRADE.
 - RESURFACE ALL TRENCHES WITHIN PAVED AREAS TO MEET L.A. COUNTY ROAD DEPT. OR CALIFORNIA STATE HIGHWAY REQUIREMENTS IN ACCORDANCE WITH PERMITS.
 - FOR ALLOWABLE LEAKAGE TEST USE FORMULA NO. 2, SPEC. L, SEC. 54.
 - ALL STATE AND LOCAL TRENCH SAFETY ORDERS WILL BE STRICTLY ENFORCED.
- CONSTRUCTION NOTE:
- AN ACCEPTABLE CERTIFICATION OF CONSTRUCTION TEST RESULTS SHALL BE SUBMITTED TO THE CONSTRUCTION DIVISION. CONSTRUCTION TESTS ARE TO BE MADE IN ACCORDANCE WITH A.S.T.M. STANDARD METHOD OF TEST "D-690" - "75".
 - NO CONSTRUCTION IS PERMITTED IN FILLED AREAS WHEN THE RELATIVE DENSITY OF COMPACTED FILL IS LESS THAN 80%.
 - IF THE RELATIVE DENSITY OF COMPACTED FILL IS LESS THAN 80%, ALL MAIN LINE AND HOUSE LATERAL V.C.P. SEWERS SHALL BE CONSTRUCTED PER S. 5 OR S. 6 OR HAVE A SPECIAL BASIS DESIGN PER S. 21, CASE III - SPECIAL MANHOLE BASES PER S. 16 ARE REQUIRED.
 - IF THE RELATIVE DENSITY OF COMPACTED FILL IS 80% OR GREATER, THE SPECIAL PROVISIONS IN (C) AND (D) ARE NOT REQUIRED.
19. ALL FILL MUST BE IN PLACE PRIOR TO STARTING SEWER CONSTRUCTION

COLLECT CHARGES AS INDICATED
 D.P. Olson 8-1-66

NO OBJECTIONS FOR THE DISPOSAL OF INDUSTRIAL WASTES SHALL BE MADE TO SEWERS SHOWN ON THESE DRAWINGS WITHOUT WRITTEN PERMISSION FROM THE CHIEF ENGINEER AND GENERAL MANAGER OF THE COUNTY SANITATION DISTRICTS.

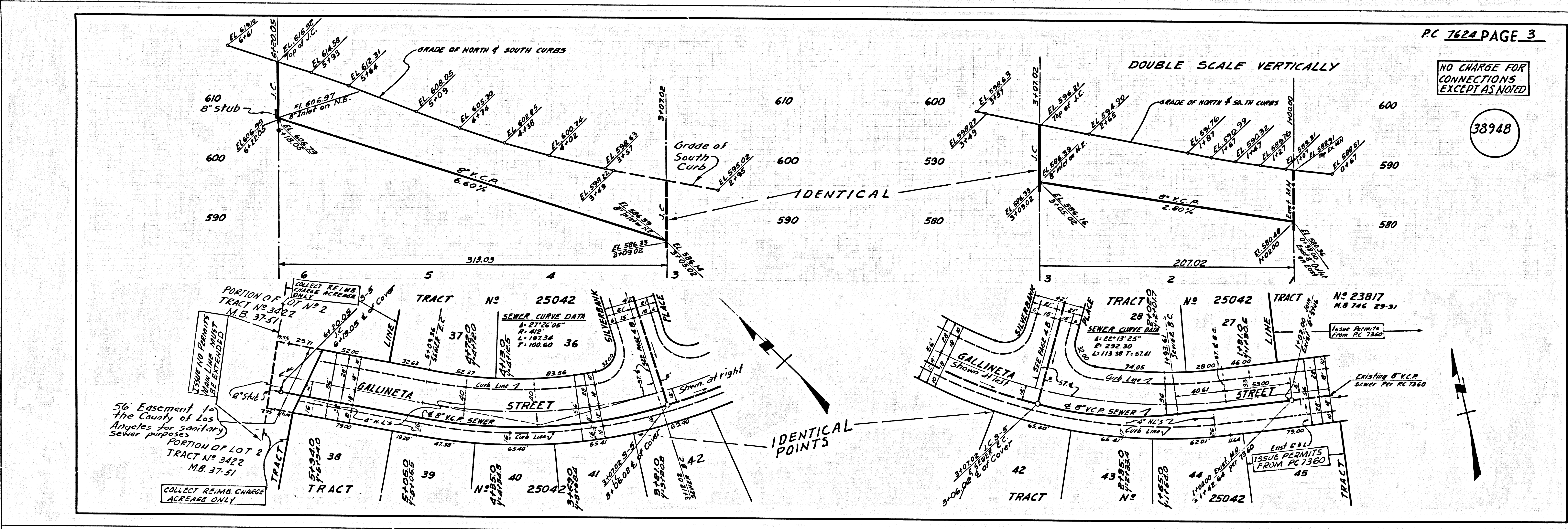
COUNTY OF LOS ANGELES, CALIFORNIA
 JOHN A. LAMBE, COUNTY ENGINEER J. D. PARKHURST, CHIEF ENGINEER
 CO. SAN. DIST. NO. 11
 APPROVED BY: *[Signature]* APPROVED BY: *[Signature]*
 SANITATION ENGINEER OFFICE ENGINEER
 SUBMITTED BY: *[Signature]*
 5.000 DIVISION ENGINEER
 CHECKED BY: *[Signature]* 9-20-66
 REG. C. E. NO. 10493
 J. N. 0367.46



38947

P. C. 7624 PAGE 2

NO CHARGE FOR CONNECTIONS



LEVEL NO 52045 BC 1925

