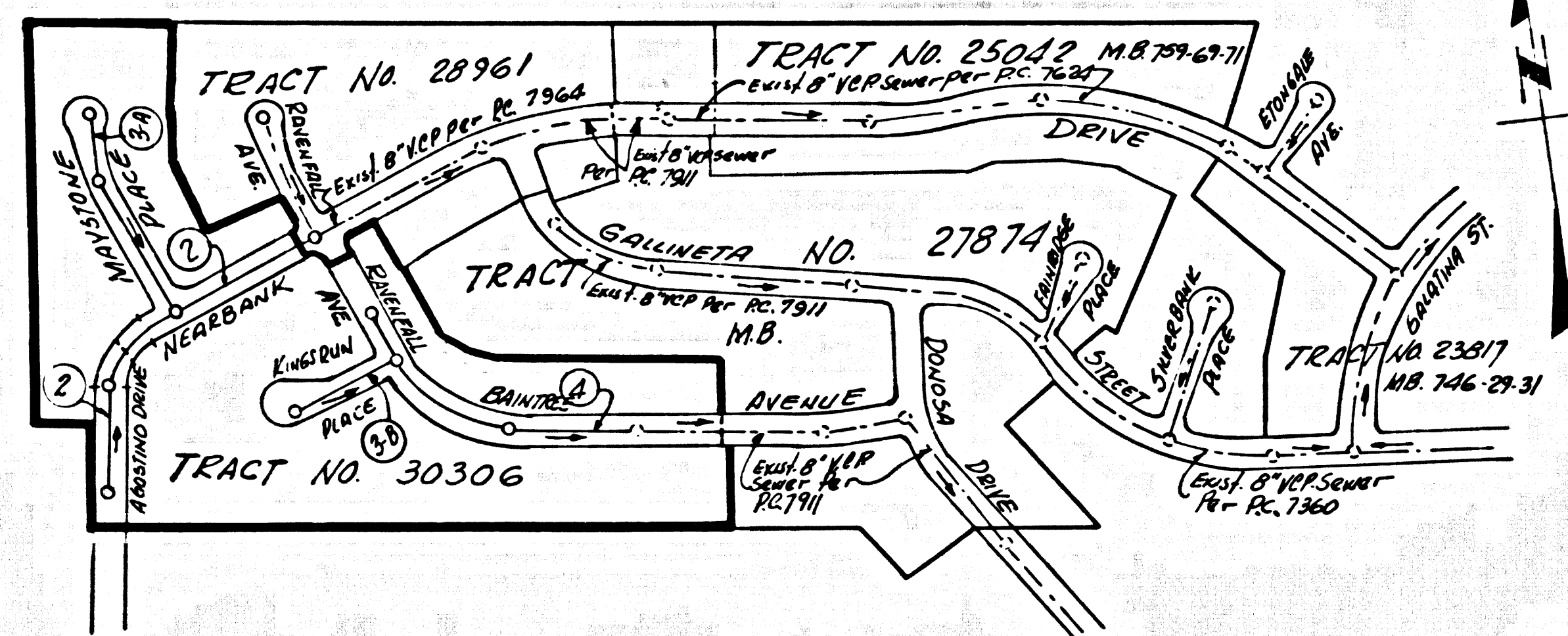


B.M. 3.9.1636 ELEV. 550.753
 Los Angeles County Road Dept.
 B.M. 100 & 2 ELY of Curb Return
 Set. Con. Fullerton Road & Santa Ana St.
 1"10" S.W. & 6" E.L. of Intersection
 OTTEBEN QUAD. 19.65



INDEX MAP
 SCALE: 1" = 300'
 P.C. 7625
 TRACT NO. 30306

- THE FOLLOWING LATEST REVISED STANDARD PLANS ON FILE IN THE OFFICE OF THE COUNTY ENGINEER SHALL APPLY IN THE CONSTRUCTION OF THIS PROJECT.
- LEGEND
- MINIMUM PUBLIC SAFETY REQUIREMENTS S-1
 - BRICK MANHOLE S-2
 - NON-REINFORCED PRECAST CONCRETE MANHOLE S-3
 - REINFORCED PRECAST CONCRETE MANHOLE S-4
 - MANHOLE FRAME AND COVER S-15
 - STANDARD MANHOLE STEP BRIDGING FOR SEWER PIPE S-17
 - CRADLING AND ENCASEMENT S-21
 - WYE OR TEE SUPPORT S-23
 - ALLOWABLE TRENCH WIDTH S-33

LOTS 1 AND 51 ARE SERVED BY EXISTING PC 7964
 LOTS 8, 9, 10 AND 11 ARE SERVED BY EXISTING PC 7951

ALL CUTS TO BE COMPLETED AND ALL FILL TO BE IN PLACE PRIOR TO THE CONSTRUCTION OF THIS PROJECT.

DOUBLE SCALE
 LA PUENTE BLDG. DIST. NO. 2

PROFILE ALIGNMENT AND GRADE OF
 SANITARY SEWERS P.C. 7625
 PAGE 1
 CONSTRUCTED IN

TRACT No 30306
 PRIVATE CONTRACT NO. 7625

W.S. 38-C-4
 2 SHEETS; 4 PAGES
 SCALE: VERT. 1" = 8'
 HORIZ. 1" = 40'
 DECEMBER, 1967
 PREPARED IN THE OFFICES OF
 CONSOLIDATED ENGINEERING COMPANY
 8845 OLYMPIC BLVD. BEVERLY HILLS, CALIF.
 By *George H. H. H.*
 REG. C. E. NO. 10915

40848

- NOTES:
1. PROFILE STAKES ON THE PROPERTY LINE OR PROPERTY LINES PRODUCED AT RIGHT ANGLES TO THE SEWER LINE AT THE CENTER LINE OF EACH MANHOLE.
 2. NO REPRESENTATIVE OF THE COUNTY ENGINEER WILL SURVEY OR LAY OUT ANY PORTION OF THE WORK.
 3. THE PRIVATE ENGINEER SHALL FURNISH THE COUNTY ENGINEER WITH GRADE SHEETS AND STATIONING FOR ALL HOUSE LATERALS AND "T" OR "Y" BRANCHES AND SHALL PROVIDE STAKES FOR THEM AT THEIR PROPER LOCATIONS WITH STATIONING PLAINLY MARKED. ALL HOUSE LATERALS SHALL BE CONSTRUCTED IN A STRAIGHT ALIGNMENT AT RIGHT ANGLES FROM THE MAIN LINE SEWER EXCEPT AS SHOWN ON THE PLANS. HOUSE LATERALS FROM CHIMNEYS SHALL NOT HAVE AN ANGLE OF LESS THAN 45° WITH THE MAIN LINE SEWER. ANY CHANGE IN ALIGNMENT SHALL BE REQUESTED IN WRITING BY THE PRIVATE ENGINEER.
 4. THE PRIVATE ENGINEER SHALL FURNISH THE HOUSE LATERAL DEPTH AT THE PROPERTY LINE BELOW THE TOP OF CURB ELEVATION FOR EACH HOUSE LATERAL ON THE GRADE SHEET.
 5. NO REVISIONS SHALL BE MADE IN THESE PLANS WITHOUT THE APPROVAL OF THE COUNTY ENGINEER.
 6. THE CONTRACTOR SHALL NOTIFY THE CONSTRUCTION DIVISION BY TELEPHONE, MADISON 9-4747, EXT. 81591, AT LEAST TWENTY-FOUR HOURS BEFORE STARTING ANY WORK UNDER THIS CONTRACT.
 7. ALL STRUCTURES SHALL BE EITHER BRICK MANHOLES PER S-2 OR PRECAST CONCRETE MANHOLES PER S-3 OR S-4.
 8. "T" OR "Y" BRANCHES MAY BE USED FOR CONNECTIONS TO MAINLINE SEWER EXCEPT AS NOTED.
 9. MANHOLE TOPS IN UNIMPROVED RIGHTS-OF-WAY TO BE SIX INCHES ABOVE FINISHED GRADE.
 10. USE EXTRA STRENGTH PIPE. ALL PIPE IS STANDARD DEPTH EXCEPT AS NOTED.
 11. VITRIFIED CLAY PIPE JOINTS SHALL BE TYPE "D", "T", OR "G" PER STD. SPEC. SEC. 803-2.
 12. IF A POWER POLE IS WITHIN THREE FEET OF THE SEWER, THE SEWER SHALL BE ENCASED, PER S-23, TWO FEET ON EACH SIDE FROM THE POINT OF INTERFERENCE.
 13. IF DURING THE COURSE OF CONSTRUCTION IT IS DETERMINED THAT THERE IS LESS THAN FOUR FEET OF COVER OVER THE TOP OF A MAIN LINE OR HOUSE LATERAL V.C.P. SEWER WHICH IS NOT INDICATED ON THE PLANS, THE PIPE SHALL BE ENCASED PER S-23, UNLESS OTHERWISE APPROVED BY THE COUNTY ENGINEER.
 14. HOUSE LATERALS TO BE CONSTRUCTED WITH INVERTS AT PROPERTY LINE 4 FEET BELOW CURB EXCEPT AS NOTED.
 15. REPAIRS TO ALL TRENCHES WITHIN PAVED AREAS TO MEET L.A. COUNTY ROAD DEPT. OR CALIFORNIA STATE HIGHWAY REQUIREMENTS IN ACCORDANCE WITH PERMITS.
 16. SEWERS TO BE TESTED FOR LEAKAGE PER SECTION 306.3.3.7 OF THE STANDARD SPECIFICATIONS REGARDING SPECIAL SPECIAL IN DESIGNATED AREAS.
 17. REFER TO SECTION 7-10.4.1 OF THE STANDARD SPECIFICATIONS REGARDING SPECIAL SPECIAL IN DESIGNATED AREAS.
 18. ALL BACKFILL TRENCHES AND BRACE OTHER OTHER REMOVED SO AS TO ACHIEVE THE NATURAL OR FINISHED GRADES AND SLOPES SHOWN ON THE GRADING PLAN APPROVED FOR THIS TRACT BY THE BUILDING AND SAFETY DIVISION.
 19. ALL BACKFILL SHALL BE COMPACTED TO A MINIMUM OF 90% OF MAXIMUM DENSITY PER A.S.T.M. STAND. AND METHOD OF TEST D695-57 AS MODIFIED. ACCEPTABLE CERTIFICATION OF SUCH COMPACTION SHALL BE SUBMITTED TO THE CONSTRUCTION DIVISION.
 20. 19122 INDICATES HOUSE LATERALS ARE NOT TO BE LOCATED UPSTREAM OF THIS STATION.

GRADES TO WHICH THIS IMPROVEMENT IS TO BE CONSTRUCTED ARE SHOWN ON PLANS AND PROFILES. GRADE POINTS FOR TOP OF CURBS, CENTER LINE OF STREETS, OR CENTER LINE OF ALLEYS ARE SHOWN BY CIRCLES ON PROFILES. AT ALL POINTS BETWEEN DESIGNATED POINTS THE GRADE SHALL BE ESTABLISHED SO AS TO CONFORM TO A STRAIGHT LINE DRAWN BETWEEN SAID DESIGNATED POINTS. ELEVATIONS ARE IN FEET ABOVE U.S.C. & G.S. SEA LEVEL DATUM OF 1929.

WORK SHALL BE CONSTRUCTED ACCORDING TO THE STANDARD SPECIFICATIONS FOR PUBLIC WORKS CONSTRUCTION AND SPECIAL PROVISIONS FOR THE CONSTRUCTION OF SANITARY SEWERS, BOTH 1967 AND 1969 AS REVISED. AND SHALL BE PROSECUTED ONLY IN THE PRESENCE OF THE COUNTY ENGINEER. APPROVAL OF THIS PLAN BY THE COUNTY ENGINEER, ROOM 330 COUNTY ENGINEERING BUILDING, 100 WEST SECOND STREET, LOS ANGELES, CALIFORNIA, IS HEREBY GRANTED. REGIONAL OFFICE, SUPERVISOR TO COVER THE COST OF CONSTRUCTION INSPECTION AND RECORD PLANS.

APPROVAL OF THIS PLAN BY THE COUNTY OF LOS ANGELES DOES NOT CONSTITUTE A REPRESENTATION AS TO THE ACCURACY OF THE LOCATION OF OR THE EXISTENCE OR NON-EXISTENCE OF ANY UNDERGROUND UTILITY PIPE, OR STRUCTURE WITHIN THE LIMITS OF THIS PROJECT. THIS NOTE APPLIES TO ALL PAGES.

IF WORK IS TO BE DONE IN A STATE HIGHWAY, A PERMIT MUST BE OBTAINED FROM THE STATE OF CALIFORNIA, DIVISION OF HIGHWAYS, 120 SOUTH SPRING STREET, LOS ANGELES, CALIFORNIA.

COUNTY OF LOS ANGELES, CALIFORNIA
 JOHN A. LAMBIE, COUNTY ENGINEER
 APPROVED BY *B.T. Worley*
 2nd CLASS CHIEF ENGINEER

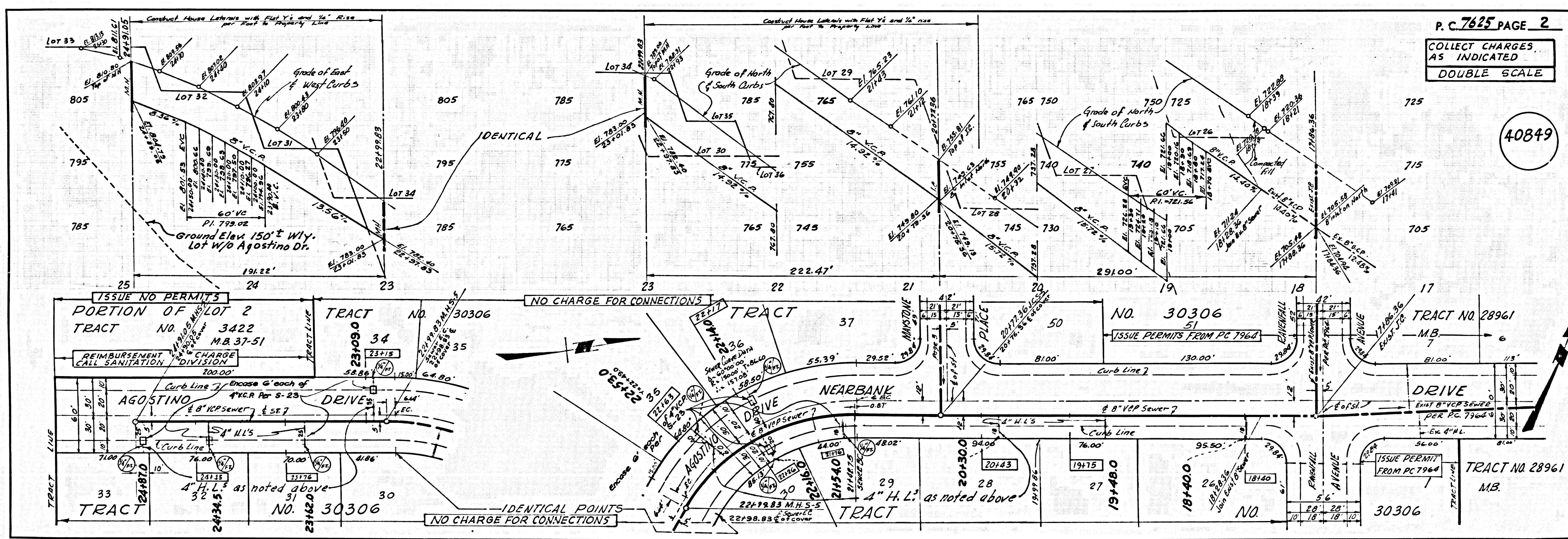
J. D. PARKHURST, CHIEF ENGINEER
 APPROVED BY *J. D. Parkhurst*
 OFFICE ENGINEER

County Sanitation Districts shall be notified prior to the following so that required inspection can be made (Phone 287-1025 or 2-930-8000).

Asst. of the project.

No connections for the disposal of industrial wastes shall be made to sewers shown on these drawings without written permission from the Chief Engineer and General Manager of the County Sanitation Districts.

COLLECT CHARGES AS INDICATED



P.C. 7625 PAGE 2
 COLLECT CHARGES AS INDICATED
 DOUBLE SCALE

40849

