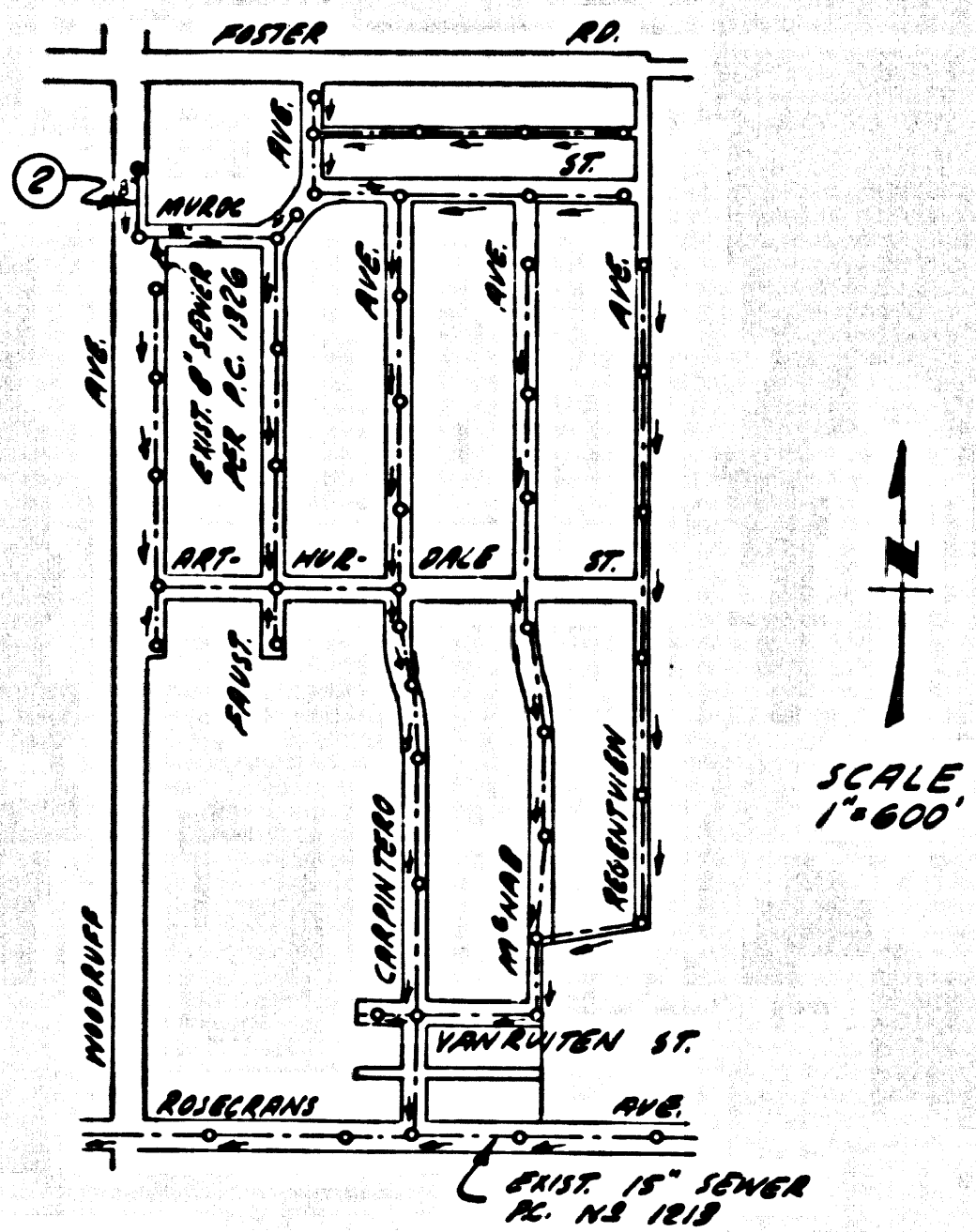


B.M. 27 965 ELEV. 90.518  
 LEAD & TACK NEAR B.C.R. IN CURB 1'  
 W/3 RETURN, 1/4" GALV. WOODRUFF  
 1/4" POSTER 2" DIA. AND 1/4" DIA. 2"  
 INT. MANHOLE (S.M.)  
 NORMAL QUAD. 19 65



INDEX MAP  
 P.C. 7627  
 WOODRUFF AVENUE

APPROVED:  
*R. L. Sullivan*  
 INDUSTRIAL WASTE DIVISION

**BELLFLOWER BLDG. DIST. NO. 4.07**

- NOTES:
1. PROVIDE STAKES ON THE PROPERTY LINE OR PROPERTY LINES PRODUCED AT RIGHT ANGLES TO THE SEWER LINE AT THE CENTER LINE OF EACH MANHOLE.
  2. NO REPRESENTATIVE OF THE CITY ENGINEER WILL SURVEY OR LAY OUT ANY PORTION OF THE WORK.
  3. THE PRIVATE ENGINEER SHALL FURNISH THE CITY ENGINEER WITH GRADE SHEETS AND STATIONING FOR ALL HOUSE LATERALS AND "T" BRANCHES AND SHALL PROVIDE STAKES FOR THEM AT THEIR PROPER LOCATIONS WITH STATIONING PLAINLY MARKED. ALL HOUSE LATERALS SHALL BE CONSTRUCTED IN A STRAIGHT ALIGNMENT AT RIGHT ANGLES FROM THE MAIN LINE SEWER EXCEPT AS SHOWN ON THE PLANS. HOUSE LATERALS FROM CHIMNEYS SHALL NOT HAVE AN ANGLE OF LESS THAN 45° WITH THE MAIN LINE SEWER. ANY CHANGE IN ALIGNMENT SHALL BE REQUESTED IN WRITING BY THE PRIVATE ENGINEER.
  4. THE PRIVATE ENGINEER SHALL FURNISH THE HOUSE LATERAL DEPTH AT THE PROPERTY LINE BELOW THE TOP OF CURB ELEVATION FOR EACH HOUSE LATERAL ON THE GRADE SHEET.
  5. NO REVISIONS SHALL BE MADE IN THESE PLANS WITHOUT THE APPROVAL OF THE CITY ENGINEER.
  6. THE CONTRACTOR SHALL NOTIFY THE CONSTRUCTION DIVISION BY TELEPHONE, HANSON 9-4747, EXT. 8181, AT LEAST TWENTY-FOUR HOURS BEFORE STARTING ANY WORK UNDER THIS CONTRACT.
  7. MANHOLES SHALL BE WICK SEWER STRUCTURES PER S.D. PRECAST CONCRETE MANHOLES PER S-3 OR S-4 MAY BE USED AS AN ALTERNATE IN LOCATIONS APPROVED BY THE CITY ENGINEER.
  8. USE STANDARD MANHOLE FRAMES AND COVERS, S-1, EXCEPT AS NOTED.
  9. MANHOLE TOPS IN UNIMPROVED RIGHTS-OF-WAY TO BE SIX INCHES ABOVE FINISHED GRADE.
  10. USE EXTRA STRENGTH PIPE. ALL PIPE IS STANDARD DEPTH EXCEPT AS NOTED.
  11. USE MECHANICAL COMPRESSION JOINTS FOR ALL V.C.P. JOINTS PER SPEC., SECS. 34, 48 & 49.
  12. IF A POWER POLE IS WITHIN THREE FEET OF THE SEWER, THE SEWER SHALL BE ENCASED, PER S-23, TWO FEET ON EACH SIDE FROM THE POINT OF INTERFERENCE.
  13. IF DURING THE COURSE OF CONSTRUCTION IT IS DETERMINED THAT THERE IS LESS THAN FOUR FEET OF COVER OVER THE TOP OF A MAIN LINE OR HOUSE LATERAL V.C.P. SEWER WHICH IS NOT INDICATED ON THE PLANS, THE PIPE SHALL BE ENCASED PER S-23, UNLESS OTHERWISE APPROVED BY THE CITY ENGINEER.
  14. HOUSE LATERALS TO BE CONSTRUCTED WITH INVERTS AT PROPERTY LINE 6 FEET BELOW CURB GRADE EXCEPT AS NOTED.
  15. RESURFACE ALL TRENCHES WITHIN PAVED AREAS TO MEET L.A. COUNTY ROAD DEPT. OR CALIFORNIA STATE HIGHWAY REQUIREMENTS IN ACCORDANCE WITH PERMITS.
  16. FOR ALLOWABLE LEAKS TEST USE FORMULA NO. 2, SPEC. E, SEC. 44.
  17. ALL STATE AND LOCAL TRENCH SAFETY ORDERS WILL BE STRICTLY ENFORCED.

NO CONNECTIONS FOR THE DISPOSAL OF INDUSTRIAL WASTES SHALL BE MADE TO SEWERS SHOWN ON THESE DRAWINGS WITHOUT WRITTEN PERMISSION FROM THE CHIEF ENGINEER AND GENERAL MANAGER OF THE COUNTY SANITATION DISTRICTS.

**COLLECT CHARGES AS INDICATED**  
*Eastman*

**NOTICE TO CONTRACTOR**  
 The existence and location of any underground utility pipes or structures shown on these plans are obtained by a search of the available records to the best of my knowledge there are no existing utilities shown as shown on these plans. The contractor is required to take due precautionary measures to protect the utility lines shown and any other lines not of record or not shown on these plans.  
*Thomas H. Sullivan 4-27-66*  
 T.L. SULLIVAN REG. 72827

PROFILE, ALIGNMENT AND GRADE OF **P.C. 7627**  
**SANITARY SEWERS PAGE 1**  
 TO BE CONSTRUCTED IN  
**WOODRUFF AVENUE**

PRIVATE CONTRACT NO. **7627**

W.S. 33  
 1 SHEET, 2 PAGES  
 SCALE: VERT. 1"=4' HORIZ. 1"=40' APRIL 1966

38541

PREPARED IN THE OFFICES OF  
**TRI-STATE ENGINEERING COMPANY**  
 615 S. RAYMOND AVE., FULLERTON, CALIF., 714-871-9510  
 By: *Thomas H. Sullivan 4-13-66*  
 T.L. SULLIVAN REG. C. E. NO. 12827

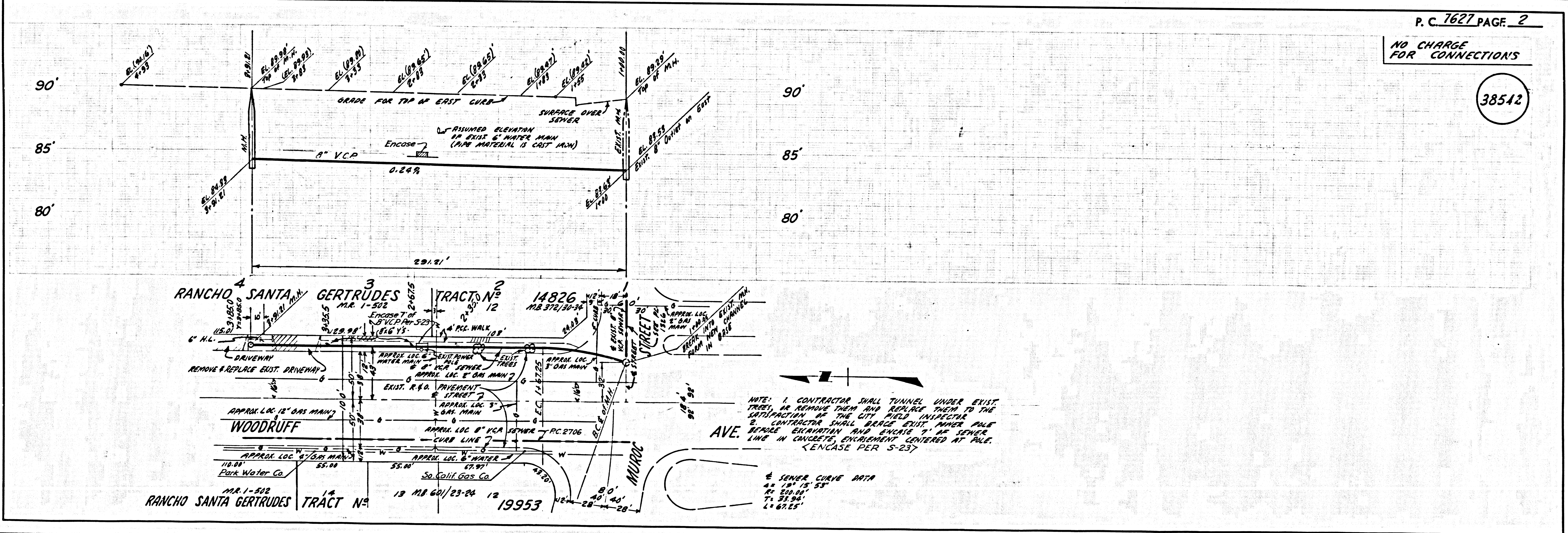
FOR LEGEND SEE PLAN NO. S-1

NOTE:  
 GRADES TO WHICH THIS IMPROVEMENT IS TO BE CONSTRUCTED ARE SHOWN ON PLANS AND PROFILES. GRADE POINTS FOR TOP OF CURBS, CENTER LINE OF STREETS, OR CENTER LINE OF ALLEYS ARE SHOWN BY CIRCLES ON PROFILES. AT ALL POINTS BETWEEN DESIGNATED ELEVATIONS ARE IN FEET ABOVE U.S.C. & G.S. SEA LEVEL, DATUM OF 1929.  
 THE DRAWING AND DATA HEREBY MADE A PART OF THE SPECIFICATIONS, PER PERMITS AND STANDARD SPECIFICATIONS DATED 12-29-64, ON FILE IN THE OFFICE OF THE CITY ENGINEER AND SHALL BE PROSECUTED ONLY IN THE PRESENCE OF THE CITY ENGINEER.  
 BEFORE WORK CAN BE STARTED, THE CONTRACTOR MUST OBTAIN A PERMIT TO EXCAVATE IN CITY STREETS FROM THE CITY ROAD DEPT. AND MAKE A DEPOSIT WITH THE CITY OF BELLFLOWER, 2818 BELLFLOWER AVENUE, BELLFLOWER, CALIF. IN AMOUNT TO COVER THE COST OF CONSTRUCTION INSPECTION AND RECORD PLANS.  
 APPROVAL OF THIS PLAN BY THE CITY OF BELLFLOWER DOES NOT CONSTITUTE A REPRESENTATION AS TO THE ACCURACY OF THE LOCATION OF OR THE EXISTENCE OR NON-EXISTENCE OF ANY UNDERGROUND UTILITY PIPE, OR STRUCTURE WITHIN THE LIMITS OF THIS PROJECT. THIS NOTE APPLIES TO ALL PAGES.  
 IF WORK IS TO BE DONE IN A STATE HIGHWAY, A PERMIT MUST BE OBTAINED FROM THE STATE OF CALIFORNIA, DIVISION OF HIGHWAYS, 128 SOUTH SPRING STREET, LOS ANGELES, CALIFORNIA.

**CITY OF BELLFLOWER CALIFORNIA**  
 JOHN A. LAMBIE, CITY ENGINEER J. D. PARKHURST, CHIEF ENGINEER  
 APPROVED BY: *R. L. Sullivan* ASSISTANT SANITATION ENGINEER APPROVED BY: *Robert J. ...* CHIEF ENGINEER

SUBMITTED BY: *Barbara ...* REG. PROFESSIONAL ENGINEER S.C. 10327  
 CHECKED BY: *Charles ...* REG. C.E. NO. 15731

APPROVED:  
*Wm. O. ...*  
 DIRECTOR OF PUBLIC WORKS



P.C. 7627 PAGE 2  
 NO CHARGE FOR CONNECTIONS

38542

NOTE: 1. CONTRACTOR SHALL TUNNEL UNDER EXISTING TREES OR REMOVE THEM AND RELOCATE THEM TO THE SATISFACTION OF THE CITY FIELD INSPECTOR.  
 2. CONTRACTOR SHALL REMOVE EXISTING MANHOLE W/3 BRIDGE EXCAVATING AND RELOCATE TO A SEWER CURB LINE IN CONCRETE, ENCASEMENT CENTERED AT P.C.E. < ENCASE PER S-23 >

SEWER CURVE DATA  
 4° 18' 15.53"  
 R= 200.00'  
 T= 35.00'  
 L= 67.55'