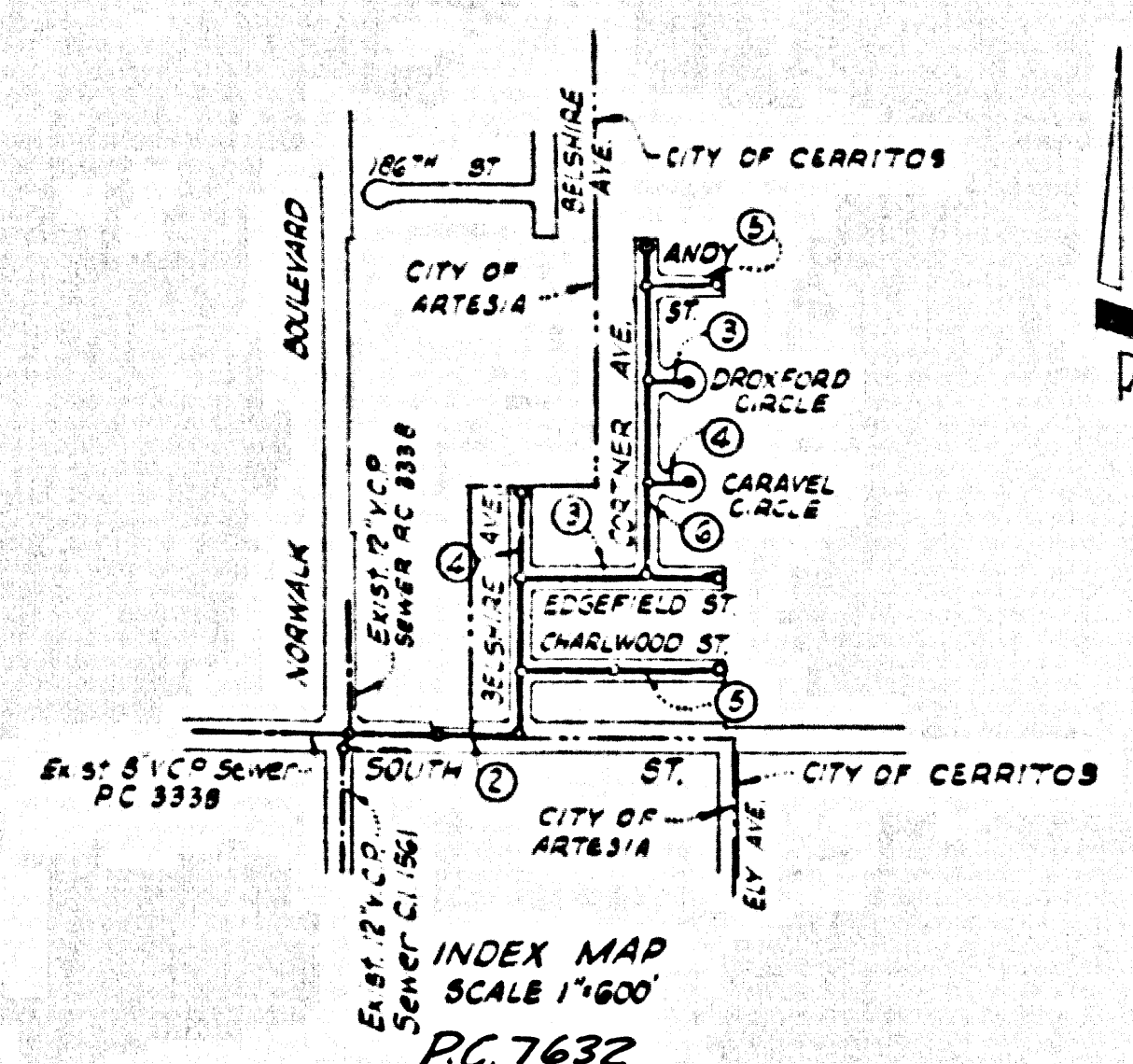


B.M. BY 741 ELEV. 47.222
 L&N in N.W. Cor. Dairy Platform
 ±70' S. of South St ± 1/2 mi. W. Bloom-
 field Ave near house #12426
 ARTESIA QUAD. 19 & 9



CITY OF ARTESIA ROAD PERMIT REQUIRED

REVIEWED BY: *Charles E. McCulloch* 8-11-67
 CITY OF ARTESIA

NO CONNECTIONS FROM THE OVERHEAD INDUSTRIAL WATER SHALL BE MADE TO SEWER LATERALS UNLESS SHOWN ON THESE PLANS. ANY SUCH CONNECTIONS SHALL BE MADE BY THE CONTRACTOR AND THE CITY ENGINEER AND THE CITY ENGINEER SHALL BE RESPONSIBLE FOR THE CITY OF ARTESIA PERMITS.

PROFILE, ALIGNMENT AND GRADE OF
SANITARY SEWERS PAGE 1
 TO BE CONSTRUCTED IN

TRACT No 25585
 IN
CITY OF CERRITOS
 P.C. 7632
 W.S. 33

40336

3 SHEETS, 6 PAGES
 SCALE: VERT. 1" = 4'
 HORIZ. 1" = 40'

PREPARED IN THE OFFICES OF
 THE STRINGER COMPANY, 620 N. BEACH BLVD.
 LA HABRA, CALIFORNIA PH. (818) 697-1784 (744) 527-6633

George J. Stringer
 REG. C. E. NO. 795-5

- NOTES
1. PROVIDE STAKES ON THE PROPERTY LINE OR PROPERTY LINES PRODUCED AT RIGHT ANGLES TO THE SEWER LINE AT THE CENTER LINE OF EACH MANHOLE.
 2. THE PRIVATE ENGINEER SHALL FURNISH THE CITY ENGINEER WITH GRADY SHEETS AND STATIONING FOR ALL HOUSE LATERALS AND "T" BRANCHES AND SHALL PROVIDE STAKES FOR THEM AT THEIR PROPER LOCATIONS WITH STATIONING PLAINLY MARKED.
 3. ALL HOUSE LATERALS SHALL BE CONSTRUCTED IN A STRAIGHT ALIGNMENT AT RIGHT ANGLES FROM THE MAIN LINE SEWER EXCEPT AS SHOWN ON THE PLANS. HOUSE LATERALS FROM CHIMNEYS SHALL NOT HAVE AN ANGLE OF LESS THAN 45° WITH THE MAIN LINE SEWER. ANY CHANGE IN ALIGNMENT SHALL BE REQUESTED IN WRITING BY THE PRIVATE ENGINEER.
 4. THE PRIVATE ENGINEER SHALL FURNISH THE HOUSE LATERAL DEPTH AT THE PROPERTY LINE BELOW THE TOP OF CURB ELEVATION FOR EACH HOUSE LATERAL ON THE GRADE SHEET.
 5. NO REVISIONS SHALL BE MADE IN THESE PLANS WITHOUT THE APPROVAL OF THE CITY ENGINEER.
 6. THE CONTRACTOR SHALL NOTIFY THE CITY OF CERRITOS BY TELEPHONE (865-2206) AT LEAST TWENTY FOUR HOURS BEFORE STARTING ANY WORK UNDER THIS CONTRACT.
 7. MANHOLES SHALL BE BRICK SEWER STRUCTURES PER S 3 OR PRECAST CONCRETE MANHOLES PER S 5 OR S 6.
 8. USE STANDARD MANHOLE FRAMES AND COVERS, S 13, EXCEPT AS NOTED.
 9. MANHOLE TOPS IN UNIMPROVED RIGHTS OF WAY TO BE SIX INCHES ABOVE FINISHED GRADE.
 10. USE EXTRA STRENGTH PIPE.
 11. USE MECHANICAL COMPRESSION JOINTS FOR ALL V.C.P. JOINTS PER CITY OF CERRITOS STANDARDS.
 12. IF A POWER POLE IS WITHIN THREE FEET OF THE SEWER, THE SEWER SHALL BE ENCASED, PER S 23, TWO FEET ON EACH SIDE FROM THE POINT OF INTERFERENCE.
 13. IF DURING THE COURSE OF CONSTRUCTION IT IS DETERMINED THAT THERE IS LESS THAN 3 FEET OF COVER OVER THE TOP OF A MAIN LINE OR HOUSE LATERAL V.C.P. SEWER WHICH IS NOT INDICATED ON THE PLANS, THE PIPE SHALL BE ENCASED PER S 23, UNLESS OTHERWISE APPROVED BY THE CITY ENGINEER.
 14. HOUSE LATERALS TO BE CONSTRUCTED WITH INVERTS AT PROPERTY LINE 6 FEET BELOW CURB GRADE EXCEPT AS NOTED.
 15. RESURFACE ALL TRENCHES WITHIN PAVED AREAS TO MEET CITY OF CERRITOS OR CALIFORNIA STATE HIGHWAY REQUIREMENTS IN ACCORDANCE WITH PERMITS.
 16. FOR ALLOWABLE LEAKAGE TEST USE CITY OF CERRITOS SPECIFICATIONS.
 17. ALL STATE AND LOCAL TRENCH SAFETY ORDERS WILL BE STRICTLY ENFORCED.
 18. 6" V.C.P. HOUSE LATERALS SHALL BE LOCATED A MINIMUM OF 10" FROM WATER SERVICES.
 19. SEWES SHALL BE BEDDED ON JOSS BASED ON MIN. THICKNESS PER CITY OF CERRITOS S 20 SPEC'S.
 20. BEFORE WORK CAN BE STARTED, THE CONTRACTOR MUST OBTAIN A PERMIT TO EXCAVATE IN CITY OF ARTESIA STREETS FROM THE U.S. COUNTY ROAD DEPT., DISTRICT OFFICE #14.
- NOTE: ALL INSPECTION TO BE PERFORMED UNDER THE JURISDICTION OF THE CITY OF CERRITOS.

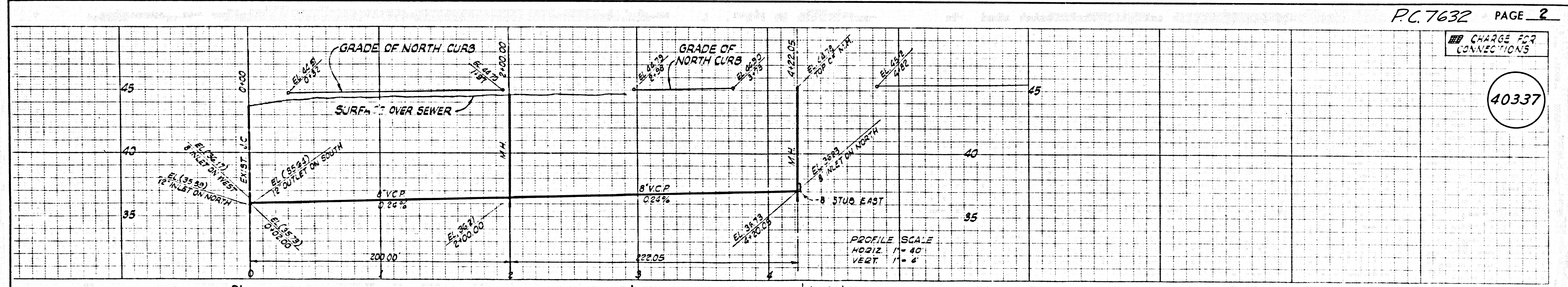
GRADES TO WHICH THIS IMPROVEMENT IS TO BE CONSTRUCTED ARE SHOWN ON PLANS AND PROFILE. GRADE POINTS FOR TOP OF CURB, CENTER LINE OF STREETS OR CENTER LINE OF ALLEYS ARE SHOWN BY CIRCLES ON PROFILES AT ALL POINTS BETWEEN DESIGNATED POINTS. THE GRADE SHALL BE ESTABLISHED AS TO CONFORM TO A STRAIGHT LINE DRAWN BETWEEN SAID DESIGNATED POINTS. ELEVATIONS ARE IN FEET ABOVE U.S.C. & G.S. SEA LEVEL DATUM OF 1929. THIS DRAWING AND THE DATA HEREON ARE HEREBY MADE A PART OF THE SPECIFICATIONS. WORK SHALL BE CONSTRUCTED ACCORDING TO STANDARD SPECIFICATIONS ON FILE IN THE OFFICE OF THE CITY ENGINEER AND SHALL BE PROSECUTED ONLY IN THE PRESENCE OF THE CITY ENGINEER.

APPROVAL OF THIS PLAN ON THE CITY OF CERRITOS OR THE CITY OF ARTESIA DOES NOT CONSTITUTE A REPRESENTATION AS TO THE ACCURACY OF THE LOCATION OF OR THE EXISTENCE OR NON-EXISTENCE OF ANY UNDERGROUND UTILITY OR STRUCTURE WITHIN THE LIMITS OF THIS PROJECT. THIS NOTE APPLIES TO ALL PARTS OF WORK IS TO BE DONE IN A STATE HIGHWAY. A PERMIT MUST BE OBTAINED FROM THE STATE OF CALIFORNIA, DIVISION OF HIGHWAYS, 126 SOUTH SPRING STREET, LOS ANGELES, CALIFORNIA.

CITY OF CERRITOS, CALIFORNIA
 APPROVED BY CITY ENGINEER: *J. D. Parkhurst*, CHIEF ENGINEER
 APPROVED BY: *George J. Stringer*, OFFICE ENGINEER

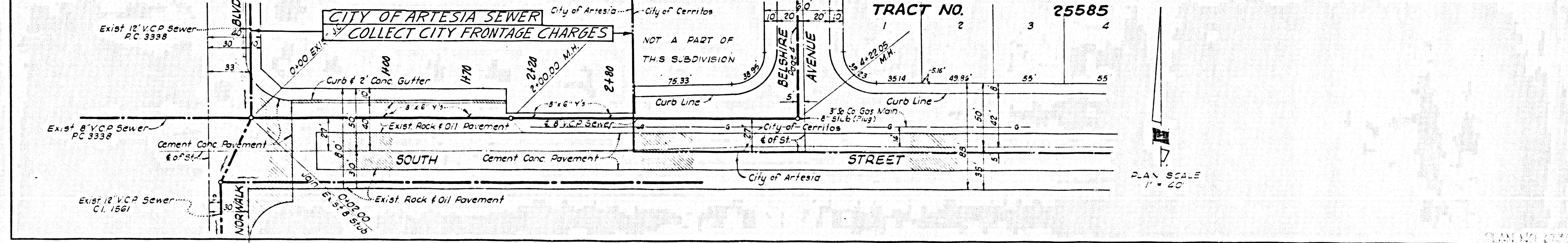
CHECKED BY: *Charles E. McCulloch*
 SUBMITTED BY: *Ran...*

PLAN NO. 673 (2)



CHARGE FOR CONNECTIONS

40337



PLAN SCALE 1" = 40'

PLAN NO. 673 (2)