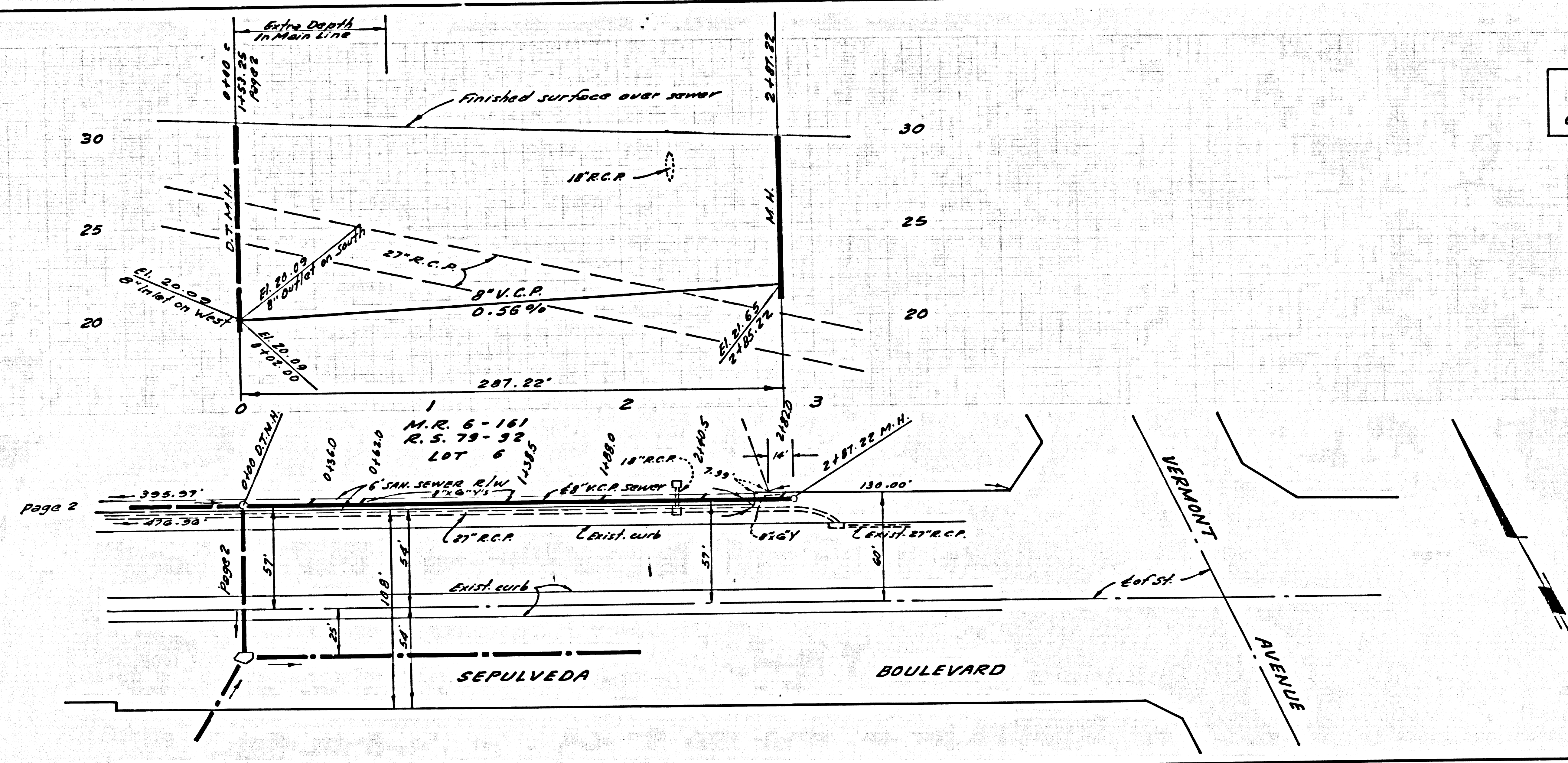
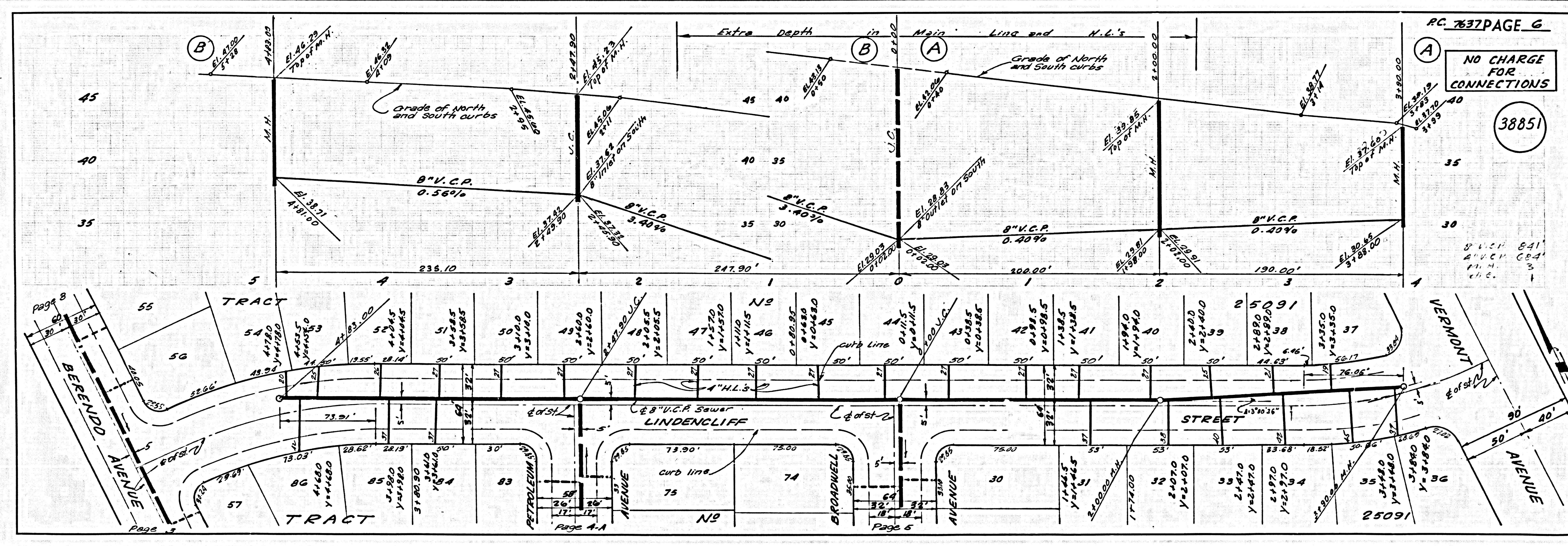
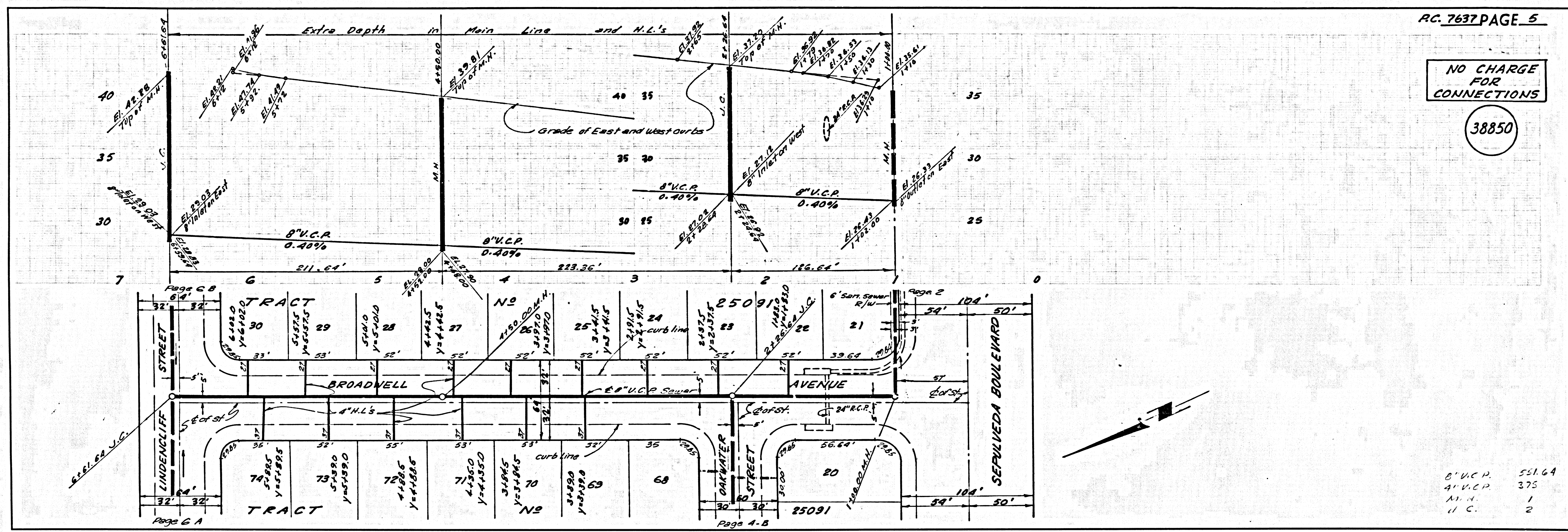


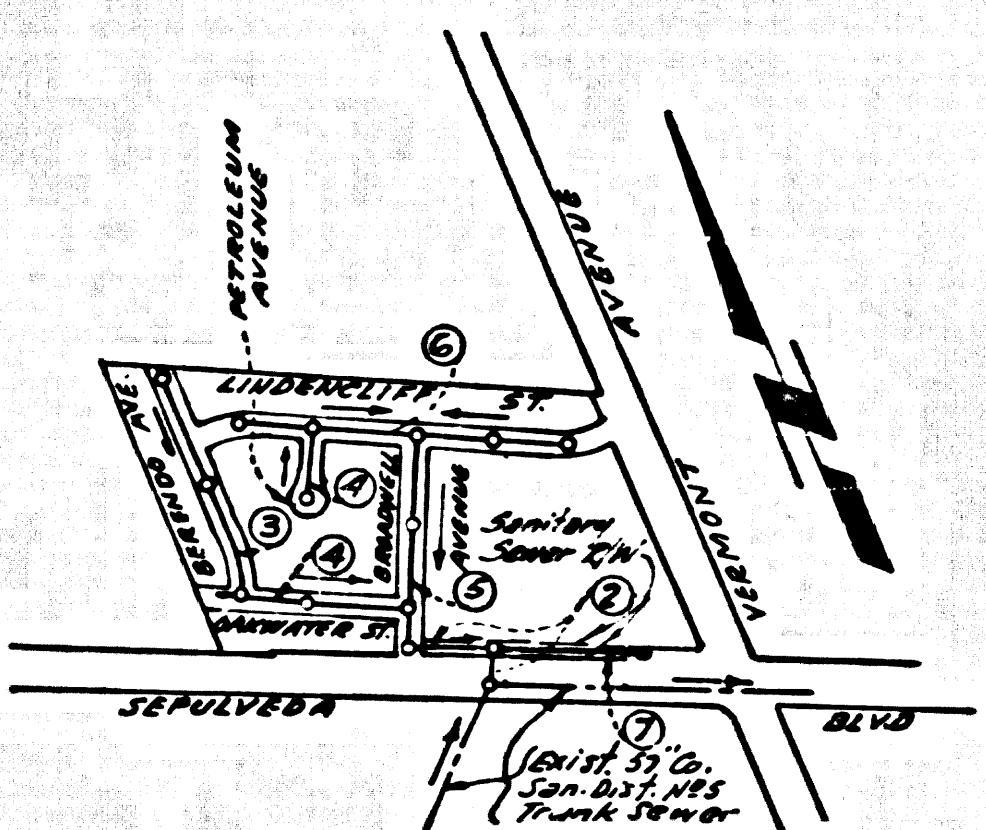
NO CHARGE FOR CONNECTIONS

38852





B.M. 87-9071 ELEV. 32.569
 Square head spike near center
 of curb return N.E. corner
 Lomita Blvd. & Vermont Ave.
 Base Line QUAD. 19 65 Adj.



INDEX MAP
 TRACT NO. 25091
 P.C. 7637
 SCALE 1" = 600'

REVISION 11/16/66
 Added Page 7 for design of
 283.22 feet of 8" V.C.R. on
 Sepulveda Blvd.
 Approved: *Edward J. Valasky*

REVISION 9-6-66
 Jacking under Sepulveda Blvd.
 Page 2.
 Approved: *Edward J. Valasky*

REVISION 10/17/66
 Revised line location between
 Sta. 240.00 and 3450.00 Page 6
 Approved: *Edward J. Valasky*

REVISION 10/26/66
 Moved Manhole from Sta. 4170.00 to
 Sta. 4189.00 on Linderoth Street
 page 6.
 Approved: *Edward J. Valasky*

NO CONNECTIONS FOR THE DISPOSAL
 OF INDUSTRIAL WASTES SHALL BE MADE TO
 SEWERS SHOWN ON THESE DRAWINGS
 WITHOUT WRITTEN PERMISSION FROM THE
 CHIEF ENGINEER AND GENERAL MANAGER
 OF THE COUNTY SANITATION DISTRICTS.

BEFORE BREAKING INTO ANY EXISTING STRUCTURE
 AND BEFORE FINAL ACCEPTANCE OF THIS WORK,
 COUNTY SANITATION DISTRICT (DU 4-1281) SHALL
 BE NOTIFIED IN ORDER THAT REQUIRED INSPEC-
 TION CAN BE MADE.

LOMITA BLDG. DIST. NO. 12

- NOTES
1. PROVIDE STAKES ON THE PROPERTY LINE OR PROPERTY LINES PRODUCED AT RIGHT ANGLES TO THE SEWER LINE AT THE CENTER LINE OF EACH MANHOLE.
 2. NO REPRESENTATIVE OF THE COUNTY ENGINEER WILL SURVEY OR LAY OUT ANY PORTION OF THE WORK.
 3. THE PRIVATE ENGINEER SHALL FURNISH THE COUNTY ENGINEER WITH GRADE SHEETS AND STATIONING FOR ALL HOUSE LATERALS AND "T" BRANCHES AND SHALL PROVIDE STAKES FOR THESE AT THEIR PROPER LOCATIONS WITH STATIONING PLAINLY MARKED. ALL HOUSE LATERALS SHALL BE CONSTRUCTED IN A STRAIGHT ALIGNMENT AT RIGHT ANGLES FROM THE MAIN LINE SEWER EXCEPT AS SHOWN ON THE PLANS. HOUSE LATERALS FROM CHIMNEYS SHALL NOT HAVE AN ANGLE OF LESS THAN 45° WITH THE MAIN LINE SEWER. ANY CHANGE IN ALIGNMENT SHALL BE REQUESTED IN WRITING BY THE PRIVATE ENGINEER.
 4. THE PRIVATE ENGINEER SHALL FURNISH THE HOUSE LATERAL SUPPLY AT THE PROPERTY LINE BELOW THE TOP OF CURB ELEVATION FOR EACH HOUSE LATERAL ON THE GRADE SHEET.
 5. NO REVISIONS SHALL BE MADE IN THESE PLANS WITHOUT THE APPROVAL OF THE COUNTY ENGINEER.
 6. THE CONTRACTOR SHALL NOTIFY THE CONSTRUCTION DIVISION BY TELEPHONE, MADISON 9-2727, EXT. 81581, AT LEAST TWENTY-FOUR HOURS BEFORE STARTING ANY WORK UNDER THIS CONTRACT.
 7. MANHOLES SHALL BE BRICK SEWER STRUCTURES PER S.S. PRECAST CONCRETE MANHOLES PER S-5 ON S-4 MAY BE USED AS AN ALTERNATE IN LOCATIONS APPROVED BY THE COUNTY ENGINEER.
 8. USE STANDARD MANHOLE FRAMES AND COVERS, S-18, EXCEPT AS NOTED.
 9. MANHOLE TOPS IN UNIMPROVED RIGHTS-OF-WAY TO BE 24 INCHES ABOVE FINISHED GRADE.
 10. USE STEEL STRONGHOLD PIPE, ALL PIPE IS STANDARD DEPTH EXCEPT AS NOTED.
 11. USE MECHANICAL COMPRESSION JOINTS FOR ALL V.C.R. JOINTS PER SPEC. SECC. 24, 26 & 27.
 12. IF A POWER POLE IS WITHIN THREE FEET OF THE SEWER, THE SEWER SHALL BE ENCASED, PER S-5, TWO FEET ON EACH SIDE FROM THE POINT OF INTERFERENCE.
 13. IF DURING THE COURSE OF CONSTRUCTION IT IS DETERMINED THAT THERE IS LESS THAN FOUR FEET OF COVER OVER THE TOP OF A MAIN LINE OR HOUSE LATERAL V.C.R. SEWER WHICH IS NOT INDICATED ON THE PLANS, THE PIPE SHALL BE ENCASED PER S-5, UNLESS OTHERWISE APPROVED BY THE COUNTY ENGINEER.
 14. HOUSE LATERALS TO BE CONSTRUCTED WITH INVERTS AT PROPERTY LINE 6 FEET BELOW CURB GRADE EXCEPT AS NOTED.
 15. RESURFACE ALL TRENCHES WITHIN PAVED AREAS TO MEET L.A. COUNTY ROAD DEPT. OR CALIFORNIA STATE HIGHWAY REQUIREMENTS IN ACCORDANCE WITH PERMITS.
 16. FOR ALLOWABLE LEAKAGE TEST USE FORMULA NO. 2, SPEC. S. SEC. 54.
 17. ALL STATE AND LOCAL TRENCH SAFETY ORDERS WILL BE STRICTLY ENFORCED.
 18. The existence and location of any underground utility pipes, conduits or structures shown on these plans are obtained by a search of the available records. To the best of our knowledge there are no existing utilities except as shown on the plans. The contractor is required to take due precautionary measures to protect the utility lines shown and any other lines not on record or not shown on these drawings. The contractor further assumes all liability and responsibility for the utility, conduits, lines or structures shown or not shown on these drawings.
 - a) Construction in filled areas.
 - b) An acceptable certification of compaction test results shall be submitted to the Construction Division. Construction tests are to be made in accordance with A.S.T.M. Standard Method of Test D-698-43.
 - c) No construction is permitted in filled areas where the relative density of compaction is less than 90%.
 - d) If the relative density of compaction is less than 90% all materials and those laterals shall be compacted per S-23 or have a special base course per S-23. Special permits shall be obtained per S-14 are required.
 - e) If the relative density of compaction is 90% or greater special provisions in C are not required.

COLLECT CHARGES
 AS INDICATED
William Scott

PROFILE, ALIGNMENT AND GRADE OF
 SANITARY SEWERS PAGE 1

TRACT No 25091
 PRIVATE CONTRACT NO. 7637

W.S. 28
 4 SHEETS, 7 PAGES
 SCALE: VERT. 1" = 4' HORIZ. 1" = 40'
 APR 11 1966
 PREPARED IN THE OFFICES OF
 E.L. PEARSON AND ASSOC.
 BY: *Edward J. Valasky*
 REG. C.E. NO. 2767

38846

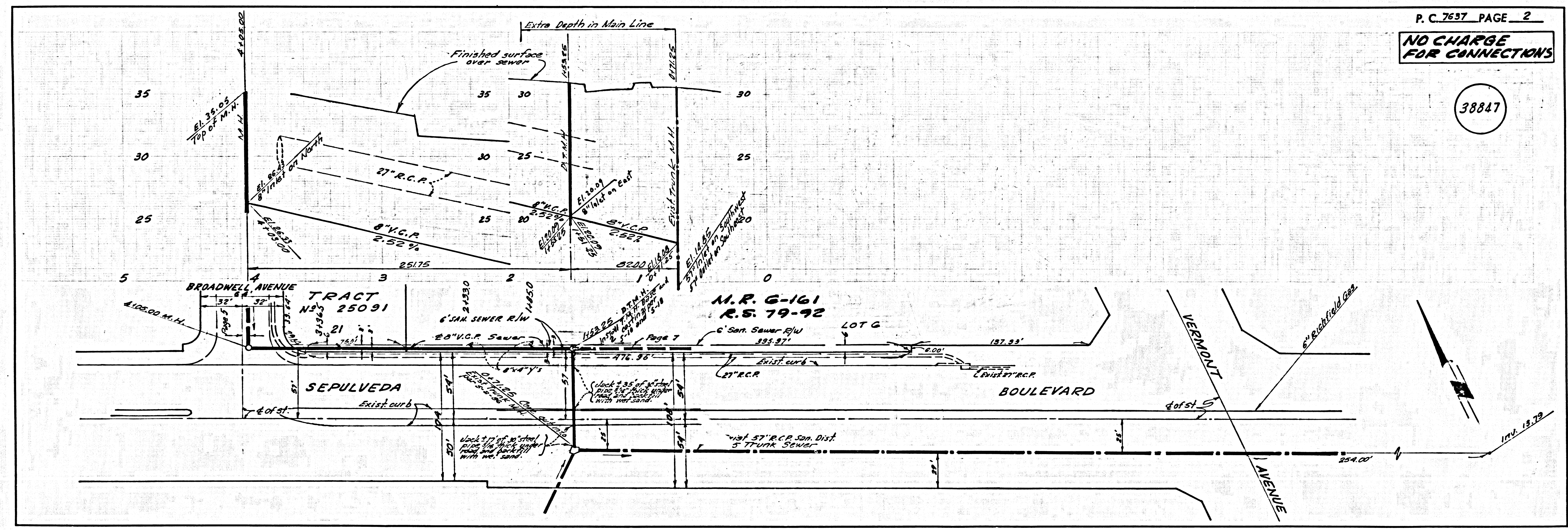
FOR LEGEND SEE PLAN NO. S-1

NOTES
 GRADES TO WHICH THIS IMPROVEMENT IS TO BE CONSTRUCTED ARE SHOWN ON PLANS AND PROFILE. GRADE POINTS FOR TOP OF CURBS, CENTER LINE OF STREETS, OR CENTER LINE OF ALLEYS ARE SHOWN BY CIRCLES ON PROFILE. AT ALL POINTS BETWEEN DESIGNATED POINTS THE GRADE SHALL BE ESTABLISHED SO AS TO CONFORM TO A STRAIGHT LINE DRAWN BETWEEN SAID DESIGNATED POINTS. ELEVATIONS ARE IN FEET ABOVE U.S.C. & G.S. MEAN LEVEL DATUM OF 1929.
 THIS DRAWING AND THE DATA HEREON ARE HEREBY MADE A PART OF THE SPECIFICATIONS. NO PART OF THIS DRAWING OR SPECIFICATIONS SHALL BE CONSIDERED TO BE A CONTRACT DOCUMENT UNLESS IT IS FILED IN THE OFFICE OF THE COUNTY ENGINEER AND SHALL BE PROSECUTED ONLY IN THE PRESENCE OF THE COUNTY ENGINEER.
 BEFORE WORK CAN BE STARTED, THE CONTRACTOR MUST OBTAIN A PERMIT TO EXCAVATE IN COUNTY STREETS FROM THE L.A. COUNTY ROAD DEPT., DISTRICT OFFICE NO. 1, 1111 N. GARDEN ST., LOS ANGELES, CALIF. AND PAY A FEE TO THE COUNTY ENGINEER, ROOM 300, COUNTY ENGINEERING BUILDING, 100 WEST SECOND STREET, LOS ANGELES, CALIF. - REGIONAL OFFICE, SUFFICIENT TO COVER THE COST OF CONSTRUCTION INSPECTION AND RECORD PLANS.
 APPROVAL OF THIS PLAN BY THE COUNTY OF LOS ANGELES DOES NOT CONSTITUTE A REPRESENTATION AS TO THE ACCURACY OF THE LOCATION OF OR THE EXISTENCE OR NON-EXISTENCE OF ANY UNDERGROUND UTILITY PIPE, OR STRUCTURE WITHIN THE LIMITS OF THIS PROJECT. THIS NOTE APPLIES TO ALL PAGES.
 IF WORK IS TO BE DONE IN A STATE HIGHWAY, A PERMIT MUST BE OBTAINED FROM THE STATE OF CALIFORNIA, DIVISION OF HIGHWAYS, 120 SOUTH SPRING STREET, LOS ANGELES, CALIFORNIA.

COUNTY OF LOS ANGELES, CALIFORNIA
 JOHN A. LAMBE, COUNTY ENGINEER J. D. PARKHURST, CHIEF ENGINEER
 CO. SAN. DIST. NO. 12
 APPROVED BY: *Edward J. Valasky* APPROVED BY: *J. D. Parkhurst*
 SANITATION ENGINEER OFFICE ENGINEER

CHECKED BY: *Edward J. Valasky* 8-11-66
 REG. C.E. NO. 10572

J.N. 036751



P.C. 7637 PAGE 2
 NO CHARGE
 FOR CONNECTIONS
 38847