

**DOUBLE SCALE**  
**CITY OF ROLLING HILLS ESTATES BLDG. DIST. NO. 12.03**

PROFILE, ALIGNMENT AND GRADE OF **P.C. 7657**  
**SANITARY SEWERS** PAGE 1  
 TO BE CONSTRUCTED IN

**TRACT NO. 24621**

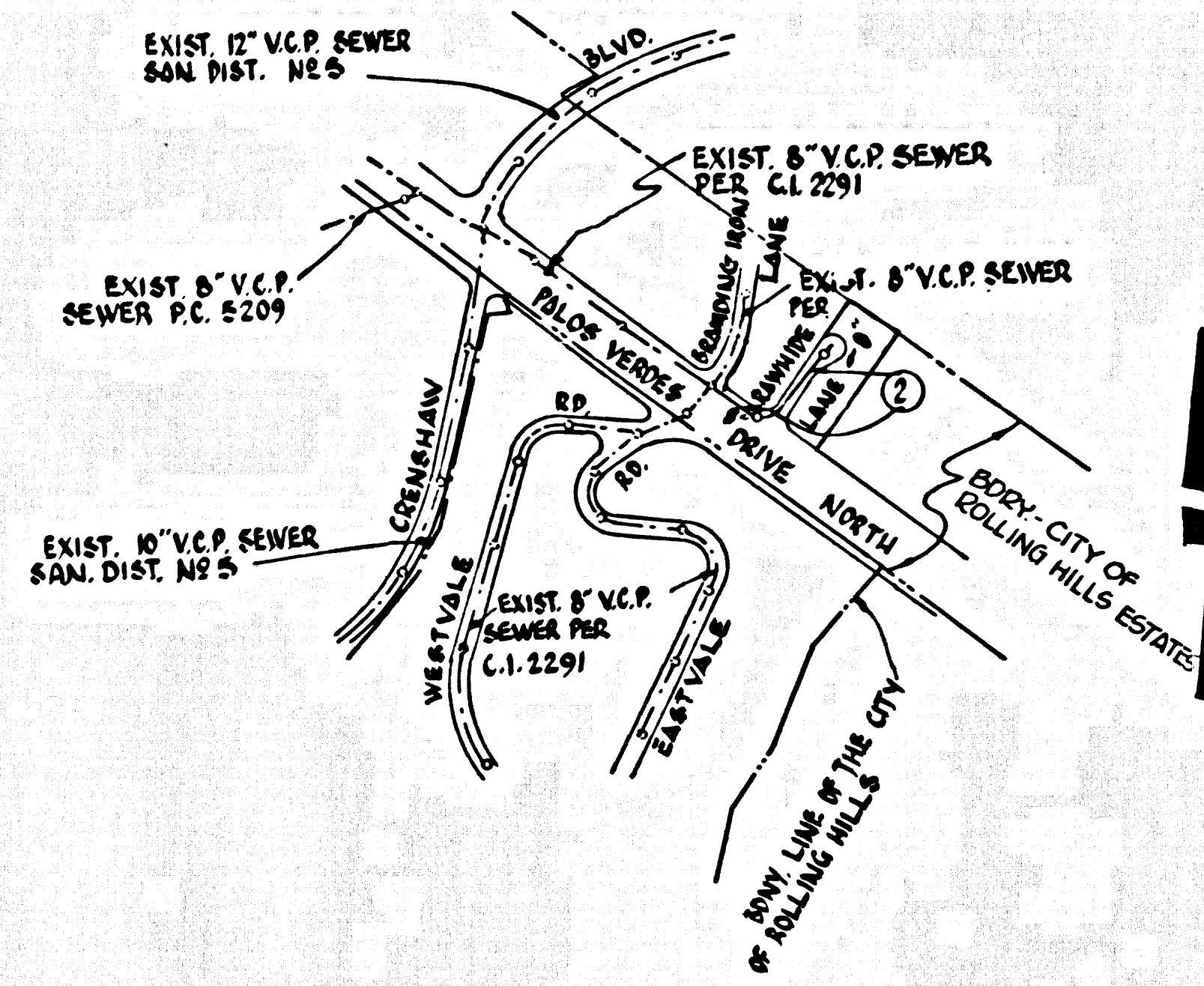
**PRIVATE CONTRACT NO. 7657**

W.S. 27  
 1 SHEET, 2 PAGES  
 SCALE: VERT. 1"=8' HORIZ. 1"=40'  
 MAY, 1966  
 PREPARED IN THE OFFICES OF  
**LANCO ENGINEERING**  
 BY: *Clark M. Leonard*  
 REG. C.E. NO. 13167

38452

FOR LEGEND SEE PLAN NO. 5-1

B.M. 5Y-4858 ELEV. 420.107  
 8.8 80286 CAP. 100 IN. WELL WITH  
 COVER AT 6 INT. PALOS VERDES  
 DRIVE NORTH, CRENSHAW  
 QUAD. 1960



**INDEX MAP**  
**TRACT NO. 24621**  
 SCALE: 1"=600'

**LANCO**  
 LAND CONSULTANT AND CIVIL ENGINEER  
 17430 SOUTH PRAIRIE AVENUE  
 TORRANCE, CALIFORNIA  
 370-4465 772-5329

- NOTES:**
1. PROVIDE STAKES ON THE PROPERTY LINE OR PROPERTY LINES PRODUCED AT RIGHT ANGLES TO THE SEWER LINE AT THE CENTER LINE OF EACH MANHOLE.
  2. NO REPRESENTATIVE OF THE CITY ENGINEER WILL SURVEY OR LAY OUT ANY PORTION OF THE WORK.
  3. THE PRIVATE ENGINEER SHALL FURNISH THE CITY ENGINEER WITH GRADE SHEETS AND STATIONING FOR ALL HOUSE LATERALS AND "T" BRANCHES AND SHALL PROVIDE STAKES FOR THEM AT THEIR PROPER LOCATIONS WITH STATIONING PLAINLY MARKED. ALL HOUSE LATERALS SHALL BE CONSTRUCTED IN A STRAIGHT ALIGNMENT AT RIGHT ANGLES FROM THE MAIN LINE SEWER EXCEPT AS SHOWN ON THE PLANS. HOUSE LATERALS FROM CHIMNEYS SHALL NOT HAVE AN ANGLE OF LESS THAN 45° WITH THE MAIN LINE SEWER. ANY CHANGE IN ALIGNMENT SHALL BE REQUESTED IN WRITING BY THE PRIVATE ENGINEER.
  4. THE PRIVATE ENGINEER SHALL FURNISH THE HOUSE LATERAL DEPTH AT THE PROPERTY LINE BELOW THE TOP OF CURB ELEVATION FOR EACH HOUSE LATERAL ON THE GRADE SHEET.
  5. NO REVISIONS SHALL BE MADE IN THESE PLANS WITHOUT THE APPROVAL OF THE CITY ENGINEER.
  6. THE CONTRACTOR SHALL NOTIFY THE CONSTRUCTION DIVISION BY TELEPHONE, MADISON 9-4747, EXT. 8155, AT LEAST TWENTY-FOUR HOURS BEFORE STARTING ANY WORK UNDER THIS CONTRACT.
  7. MANHOLES SHALL BE BRICK SEWER STRUCTURES PER S-3. PRECAST CONCRETE MANHOLES PER S-3 OR S-4 MAY BE USED AS AN ALTERNATE IN LOCATIONS APPROVED BY THE CITY ENGINEER.
  8. USE STANDARD MANHOLE FRAMES AND COVERS, S-15, EXCEPT AS NOTED.
  9. MANHOLE TOPS IN UNIMPROVED RIGHTS-OF-WAY TO BE SIX INCHES ABOVE FINISHED GRADE.
  10. USE EXTRA STRENGTH PIPE. ALL PIPE IS STANDARD DEPTH EXCEPT AS NOTED.
  11. USE MECHANICAL COMPRESSION JOINTS FOR ALL V.C.P. JOINTS PER SPEC. L, SLICE 36, 48 & 49.
  12. IF A POWER POLE IS WITHIN THREE FEET OF THE SEWER, THE SEWER SHALL BE ENCASED, PER S-23, TWO FEET ON EACH SIDE FROM THE POINT OF INTERFERENCE.
  13. IF DURING THE COURSE OF CONSTRUCTION IT IS DETERMINED THAT THERE IS LESS THAN FOUR FEET OF COVER OVER THE TOP OF A MAIN LINE OR HOUSE LATERAL V.C.P. SEWER WHICH IS NOT INDICATED ON THE PLANS, THE PIPE SHALL BE ENCASED PER S-23, UNLESS OTHERWISE APPROVED BY THE CITY ENGINEER.
  14. HOUSE LATERALS TO BE CONSTRUCTED WITH INVERTS AT PROPERTY LINE 4 FEET BELOW CURB GRADE EXCEPT AS NOTED.
  15. RESURFACE ALL TRENCHES WITHIN PAVED AREAS TO MEET CITY ROAD DEPT. OR CALIFORNIA STATE HIGHWAY REQUIREMENTS IN ACCORDANCE WITH PERMITS.
  16. FOR ALLOWABLE LEAKAGE TEST USE FORMULA NO. 2, SPEC. L, SEC. 24.
  17. ALL STATE AND LOCAL TRENCH SAFETY ORDERS WILL BE STRICTLY ENFORCED.

NO CONNECTIONS FOR THE DISPOSAL OF INDUSTRIAL WASTES SHALL BE MADE TO SEWERS SHOWN ON THESE DRAWINGS WITHOUT WRITTEN PERMISSION FROM THE CHIEF ENGINEER AND GENERAL MANAGER OF THE COUNTY SANITATION DISTRICTS.

**COLLECT CHARGES AS INDICATED**  
*S. Cantor*

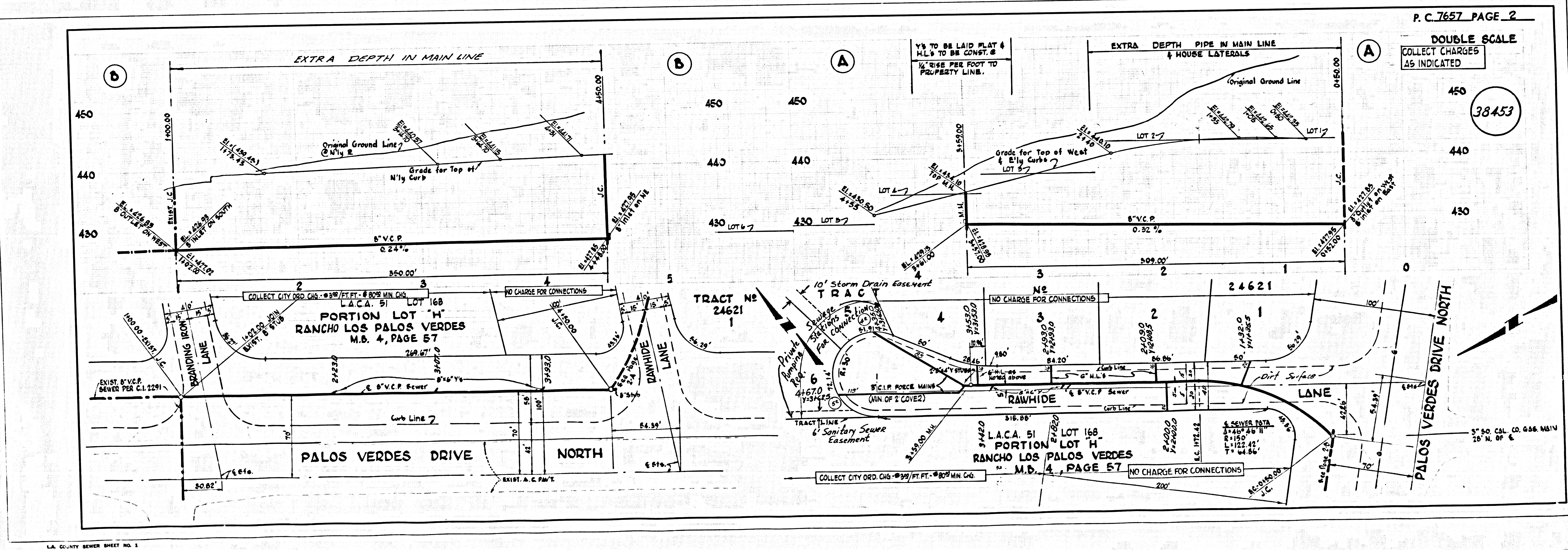
**NOTICE TO CONTRACTOR**  
 The existence and location of any underground utility pipes or structures shown on these plans are obtained by a search of the available records. To the best of my knowledge there are no existing utilities except as shown on these plans. The contractor is required to take due precautionary measures to protect the utility lines shown and any other lines not of record or not shown on these plans.  
*Clark M. Leonard*  
 REG. C.E. NO. 13167

**NOTE:**  
 GRADES TO WHICH THIS IMPROVEMENT IS TO BE CONSTRUCTED ARE SHOWN ON PLANS AND PROFILES. GRADE POINTS FOR TOP OF CURB, CENTER LINE OF STREETS, OR CENTER LINE OF ALLEYS ARE SHOWN BY CIRCLES ON PROFILES. AT ALL POINTS BETWEEN DESIGNATED POINTS THE GRADE SHALL BE ESTABLISHED SO AS TO CONFORM TO A STRAIGHT LINE DRAWN BETWEEN SAID DESIGNATED POINTS. ELEVATIONS ARE IN FEET ABOVE U.S.C. & G.S. MEAN SEA LEVEL DATUM OF 1929.  
 THIS DRAWING AND THE DATA HEREON ARE HEREBY MADE A PART OF THE SPECIFICATIONS. NO REVISIONS SHALL BE CONSTRUCTED ACCORDING TO STANDARD SPECIFICATIONS DATED 2/25/62. ON THE IN THE OFFICE OF THE CITY ENGINEER AND SHALL BE PROSECUTED ONLY IN THE PRESENCE OF THE CITY ENGINEER.  
 ROLLING HILLS ESTATES, CALIFORNIA  
 CONSTRUCTION INSPECTION AND RECORD PLANS  
 APPROVAL OF THIS PLAN BY THE CITY OF ROLLING HILLS DOES NOT CONSTITUTE A REPRESENTATION AS TO THE ACCURACY OF THE LOCATION OR OF THE EXISTENCE OR NON-EXISTENCE OF ANY UNDERGROUND UTILITY PIPE, OR STRUCTURE WITHIN THE LIMITS OF THIS PROJECT. THIS NOTE APPLIES TO ALL SIZES.  
 IF WORK IS TO BE DONE IN A STATE HIGHWAY, A PERMIT MUST BE OBTAINED FROM THE STATE OF CALIFORNIA, DIVISION OF HIGHWAYS, 120 SOUTH BRINDLEY STREET, LOS ANGELES, CALIFORNIA.

**CITY OF ROLLING HILLS ESTATES, CALIFORNIA**  
**JOHN A. LAMBIE**, CITY ENGINEER  
**J. D. PARKHURST**, CHIEF ENGINEER  
 CO. SAN. DIST. NO. 5  
 APPROVED BY: *[Signature]*  
 ASSISTANT SANITATION ENGINEER  
 APPROVED BY: *[Signature]*  
 OFFICE ENGINEER

SUBMITTED BY: *[Signature]*  
 CHECKED BY: *[Signature]*  
 REG. C.E. NO. 13167

**LANCO**  
 LAND CONSULTANT AND CIVIL ENGINEER  
 17430 SOUTH PRAIRIE AVENUE  
 TORRANCE, CALIFORNIA  
 370-4465 772-5329



**DOUBLE SCALE**  
**COLLECT CHARGES AS INDICATED**

38453

3" 50 CAL. CO. GAS MAIN  
 20' N. OF E.