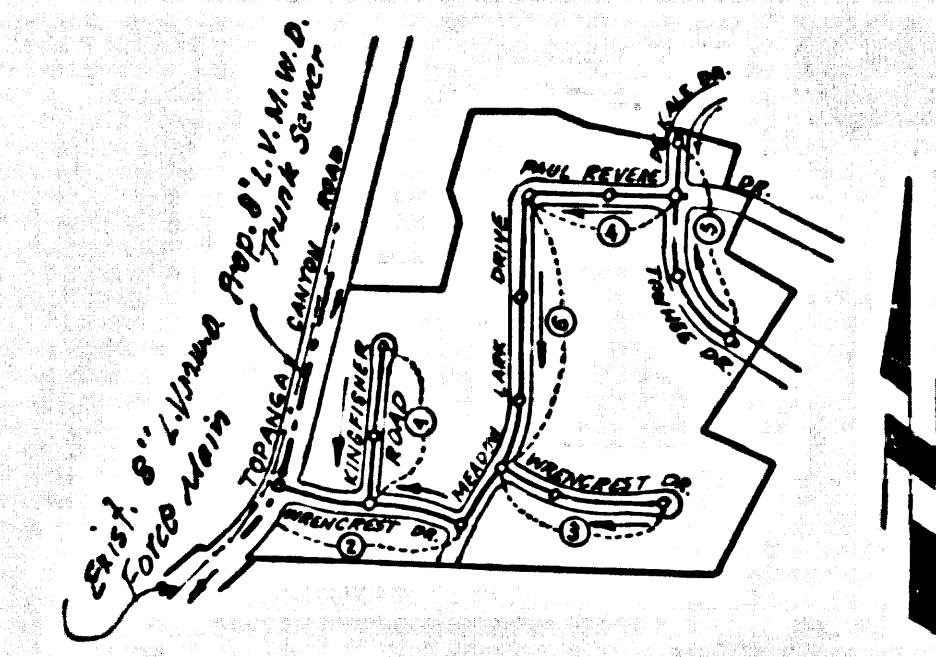


B.M. SY 5333 ELEV. 1042.724
 Redum fog ch. (h) over chain pipe
 of 4" V.C.P. 15' 2" above 2 1/2" dia.
 old Topanga Canyon Rd. (M.H. 101)
 Hwy 2 ff. E post (100+138)
 QUAD. 19 60



KEY MAP
 P.C. 7660
 Scale 1" = 200'

REVISIONS
 Revised design of Wrencrest Drive at
 Topanga Canyon Road, Page 2 from Sta.
 0+38.77 to 1+40.77 due to relocation
 of trunk line subsequent to signa-
 ture of this plan. 5-15-68
 Sam H. Miller

DOUBLE SCALE
 CALABASAS BLDG. DIST. NO. 9.1

PROFILE, ALIGNMENT AND GRADE OF
 SANITARY SEWERS PAGE 1
 TO BE CONSTRUCTED IN
 TRACT No 26369

PRIVATE CONTRACT NO. 7660

W.S. 60
 3 SHEETS, 6 PAGES
 SCALE: HORIZ. 1" = 40' VERT. 1" = 4' 0" March, 1966
 PREPARED BY THE OFFICES OF
 E.L. PEARSON & ASSOCIATES
 REG. C. & NO. 8757

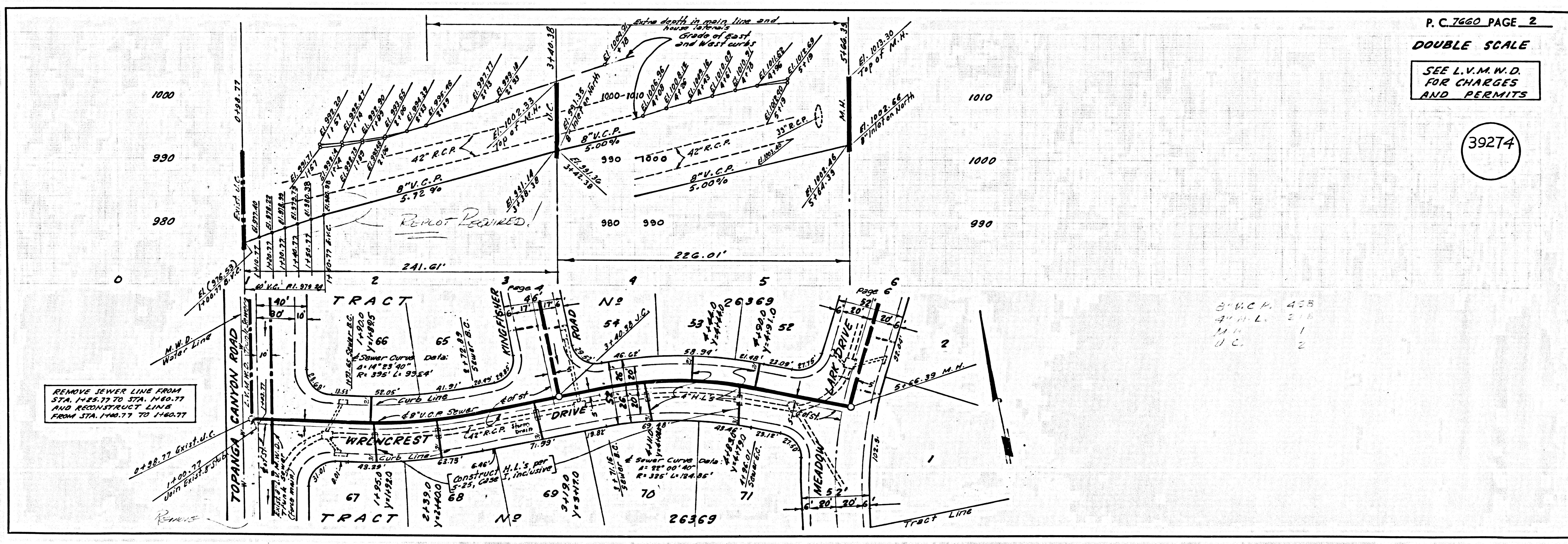
- NOTES:
1. PROVIDE STAKES ON THE PROPERTY LINE OR PROPERTY LINES PRODUCED AT RIGHT ANGLES TO THE SEWER LINE AT THE CENTER LINE OF EACH MANHOLE.
 2. NO REPRESENTATIVE OF THE COUNTY ENGINEER WILL SURVEY OR LAY OUT ANY PORTION OF THE WORK.
 3. THE PRIVATE ENGINEER SHALL FURNISH THE COUNTY ENGINEER WITH CLEAR SHOTS AND STATIONING FOR ALL HOUSE LATERALS AND "T" BRANCHES AND SHALL PROVIDE STAKES FOR THEM AT THEIR PROPER LOCATIONS WITH STATIONING PLAINLY MARKED. ALL HOUSE LATERALS SHALL BE CONSTRUCTED IN A STRAIGHT ALIGNMENT AT RIGHT ANGLES FROM THE MAIN LINE SEWER EXCEPT AS SHOWN ON THE PLANS. HOUSE LATERALS FROM CHIMNEYS SHALL NOT HAVE AN ANGLE OF USE THAN 45° WITH THE MAIN LINE SEWER. ANY CHANGE IN ALIGNMENT SHALL BE REQUESTED IN WRITING BY THE PRIVATE ENGINEER.
 4. THE PRIVATE ENGINEER SHALL FURNISH THE HOUSE LATERAL DEPTH AT THE PROPERTY LINE BELOW THE TOP OF CURB ELEVATION FOR EACH HOUSE LATERAL ON THE GRADE SHEET.
 5. NO REVISIONS SHALL BE MADE IN THESE PLANS WITHOUT THE APPROVAL OF THE COUNTY ENGINEER.
 6. THE CONTRACTOR SHALL NOTIFY THE CONSTRUCTION DIVISION BY TELEPHONE, MADISON 9-4747, EXT. 81531, AT LEAST TWENTY-FOUR HOURS BEFORE STARTING ANY WORK UNDER THIS CONTRACT.
 7. MANHOLES SHALL BE BRICK SEWER STRUCTURES PER S.1. PRECAST CONCRETE MANHOLES PER S-2 OR S-4 MAY BE USED AS AN ALTERNATE IN LOCATIONS APPROVED BY THE COUNTY ENGINEER.
 8. USE STANDARD MANHOLE FRAMES AND COVERS, S-15, EXCEPT AS NOTED.
 9. MANHOLE TOPS IN UNIMPROVED RIGHTS-OF-WAY TO BE SIX INCHES ABOVE FINISHED GRADE.
 10. USE EXTRA STRENGTH PIPE. ALL PIPE IS STANDARD DEPTH EXCEPT AS NOTED.
 11. USE MECHANICAL COMPRESSION JOINTS FOR ALL V.C.P. JOINTS PER SPEC., SECT. 34, 48 & 49.
 12. IF A POWER POLE IS WITHIN THREE FEET OF THE SEWER, THE SEWER SHALL BE ENCASED, PER S-23, TWO FEET ON EACH SIDE FROM THE POINT OF INTERFERENCE.
 13. IF DURING THE COURSE OF CONSTRUCTION IT IS DETERMINED THAT THERE IS LESS THAN FOUR FEET OF COVER OVER THE TOP OF A MAIN LINE OR HOUSE LATERAL V.C.P. SEWER WHICH IS NOT INDICATED ON THE PLANS, THE PIPE SHALL BE ENCASED PER S-23, UNLESS OTHERWISE APPROVED BY THE COUNTY ENGINEER.
 14. HOUSE LATERALS TO BE CONSTRUCTED WITH INVERTS AT PROPERTY LINE 4 FEET BELOW CURB GRADE EXCEPT AS NOTED.
 15. RESURFACE ALL TRENCHES WITHIN PAVED AREAS TO MEET L.A. COUNTY ROAD DEPT. OR CALIFORNIA STATE HIGHWAY REQUIREMENTS IN ACCORDANCE WITH PERMITS.
 16. FOR ALLOWABLE LEAKAGE TEST USE FORMULA NO. 2, SPEC. 1, SEC. 34.
 17. ALL STATE AND LOCAL TRENCH SAFETY ORDERS WILL BE STRICTLY ENFORCED.
 18. The existence and location of any underground utility pipes, conduits or structures shown on these plans are obtained by search of the available records. To the best of our knowledge there are no existing utilities except as shown on the plans. The contractor is required to take all precautionary measures to protect the utility lines shown and any other lines not on record or not shown on these drawings. The contractor further assumes all liability and responsibility for the utility pipes, conduits, lines or structures shown or not shown on these drawings.
 19. (a) An acceptable certification of compaction test results shall be submitted to the Construction Division. Compaction tests are to be made in accordance with A.S.T.M. Standard Method of Test D-698-42.
 (b) No construction is permitted in filled areas where the relative density of compaction is less than 80%.
 (c) If the relative density of compaction is less than 80% all mainline and house laterals shall be covered per S-23 or have a special base course per S-21 Case III. Special Manhole Bases per S-14 are required.
 (d) If the relative density of compaction is 80% or greater the special provisions in S-23 are not required.

NOTE:
 GRADES TO WHICH THIS IMPROVEMENT IS TO BE CONSTRUCTED ARE SHOWN ON PLANS AND PROFILES. GRADE POINTS FOR TOP OF CURBS, CENTER LINE OF STREETS, OR CENTER LINE OF ALLEYS ARE SHOWN BY CIRCLES ON PROFILES. AT ALL POINTS BETWEEN DESIGNATED POINTS THE GRADE SHALL BE ESTABLISHED SO AS TO CONFORM TO A STRAIGHT LINE BEYOND DESIGNATED POINTS.
 ELEVATIONS ARE IN FEET ABOVE U.S.C. & G.S. SEA LEVEL DATUM OF 1929.
 THE DRAWING AND THE DATA HEREON ARE HEREBY MADE A PART OF THE SPECIFICATIONS.
 WORK SHALL BE CONSTRUCTED ACCORDING TO STANDARD SPECIFICATIONS DATED MAY 15, 1958 AS REVISED BY FILE IN THE OFFICE OF THE COUNTY ENGINEER AND SHALL BE PROSECUTED ONLY IN THE PRESENCE OF THE COUNTY ENGINEER.
 BEFORE WORK CAN BE STARTED, THE CONTRACTOR MUST OBTAIN A PERMIT TO EXCAVATE IN COUNTY STREETS FROM THE L.A. COUNTY ROAD DEPT., DISTRICT OFFICE NO. 2 AND PAY A FEE TO THE COUNTY ENGINEER, ROOM 380, COUNTY ENGINEERING BUILDING, 100 WEST SECOND STREET OR PHONE REQUEST-227-2100, EXT. 1111. MUNICIPAL OFFICE, SUPPLY TO COVER THE COST OF CONSTRUCTION INSPECTION AND RECORD PLANS.
 APPROVAL OF THIS PLAN BY THE COUNTY OF LOS ANGELES DOES NOT CONSTITUTE A REPRESENTATION AS TO THE ACCURACY OF THE LOCATION OF OR THE EXISTENCE OR NON-EXISTENCE OF ANY UNDERGROUND UTILITY PIPE, OR STRUCTURE WITHIN THE LIMITS OF THIS PROJECT. THIS NOTE APPLIES TO ALL PAGES.
 IF WORK IS TO BE DONE IN A STATE HIGHWAY, A PERMIT MUST BE OBTAINED FROM THE STATE OF CALIFORNIA, DIVISION OF HIGHWAYS, 120 SOUTH SPRING STREET, LOS ANGELES, CALIFORNIA.

COLLECT CHARGES
 AS INDICATED
 L. Curtis 04/26

COUNTY OF LOS ANGELES, CALIFORNIA
 JOHN A. LAMBIE, COUNTY ENGINEER L.A.S. VIRGINIA'S SUPERVISOR/PLANNING DIVISION
 APPROVED BY: [Signature] Municipal Engineer
 APPROVED BY: [Signature] District Engineer
 SUBMITTED BY: [Signature] Regional Engineer
 CHECKED BY: [Signature] REG. C.E. NO. 15552

J. N. 0367.63



REMOVE SEWER LINE FROM
 STA. 1+42.77 TO STA. 1+40.77
 AND RECONSTRUCT LINE
 FROM STA. 1+40.77 TO 1+40.77

S.W.C.K. 458
 A.H.L. 218
 M.H. 1
 U.C. 2

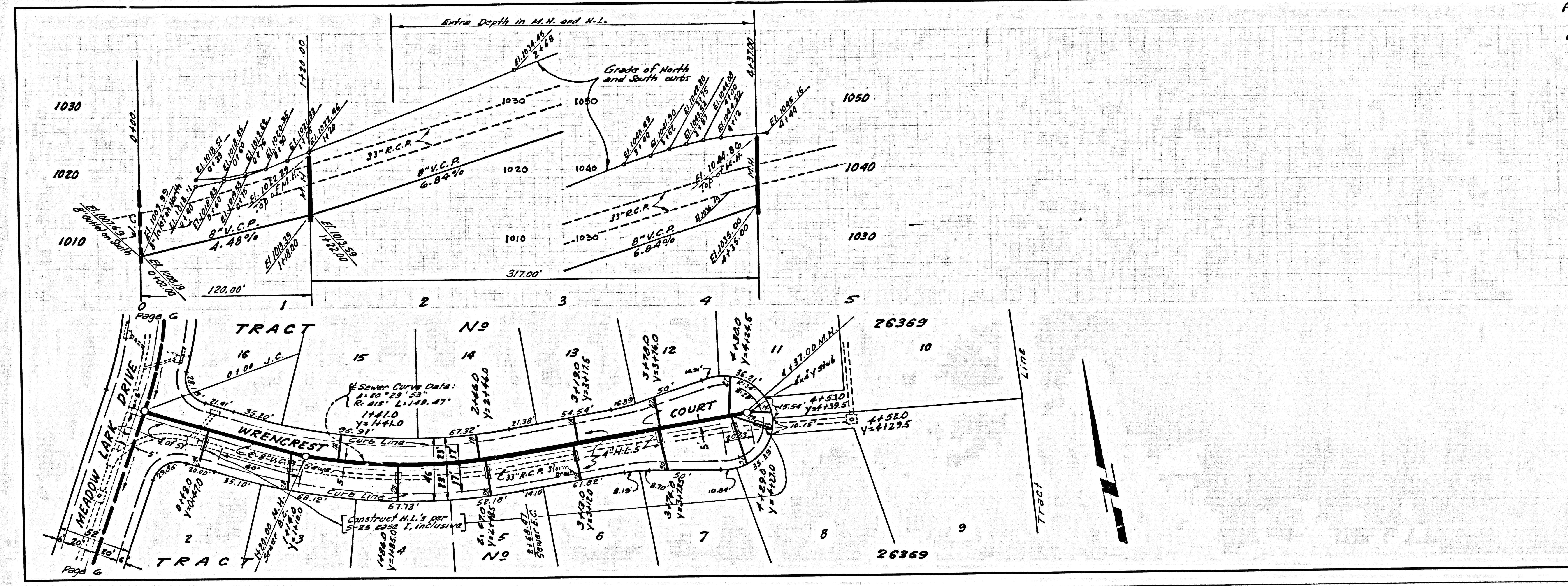
P.C. 7660 PAGE 2
 DOUBLE SCALE

SEE L.V.M.W.D.
 FOR CHARGES
 AND PERMITS

39274

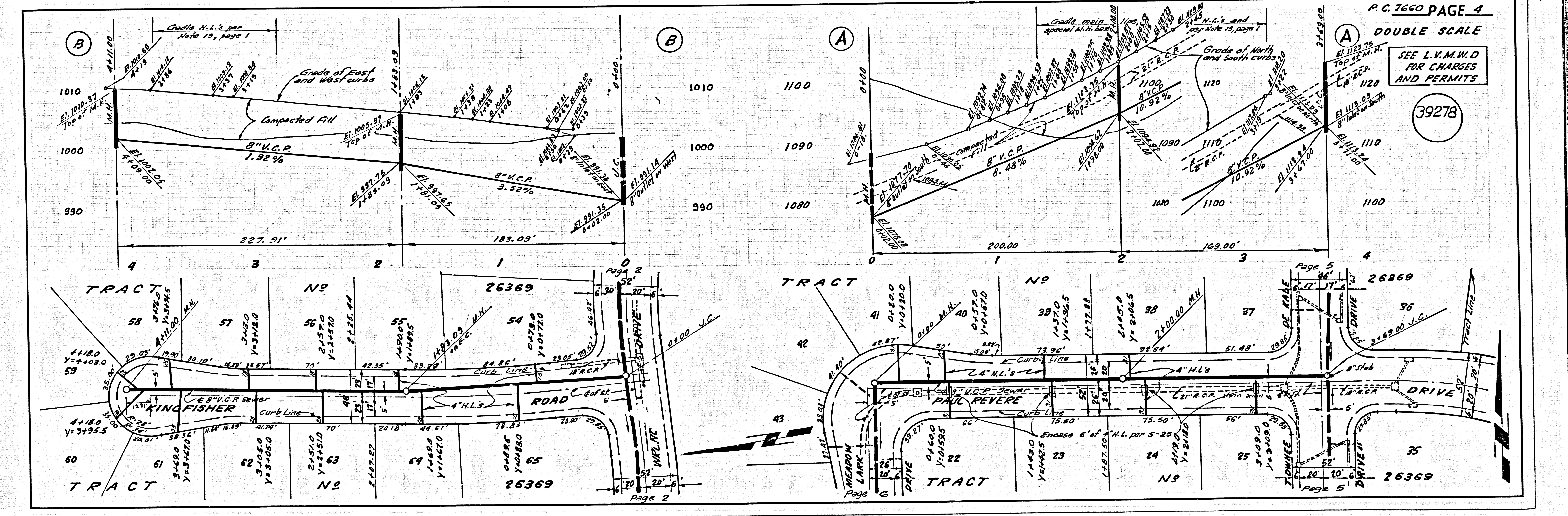
P.C. 7660 PAGE 3
DOUBLE SCALE
SEE L.V.M.W.D. FOR CHARGES AND PERMITS

39277



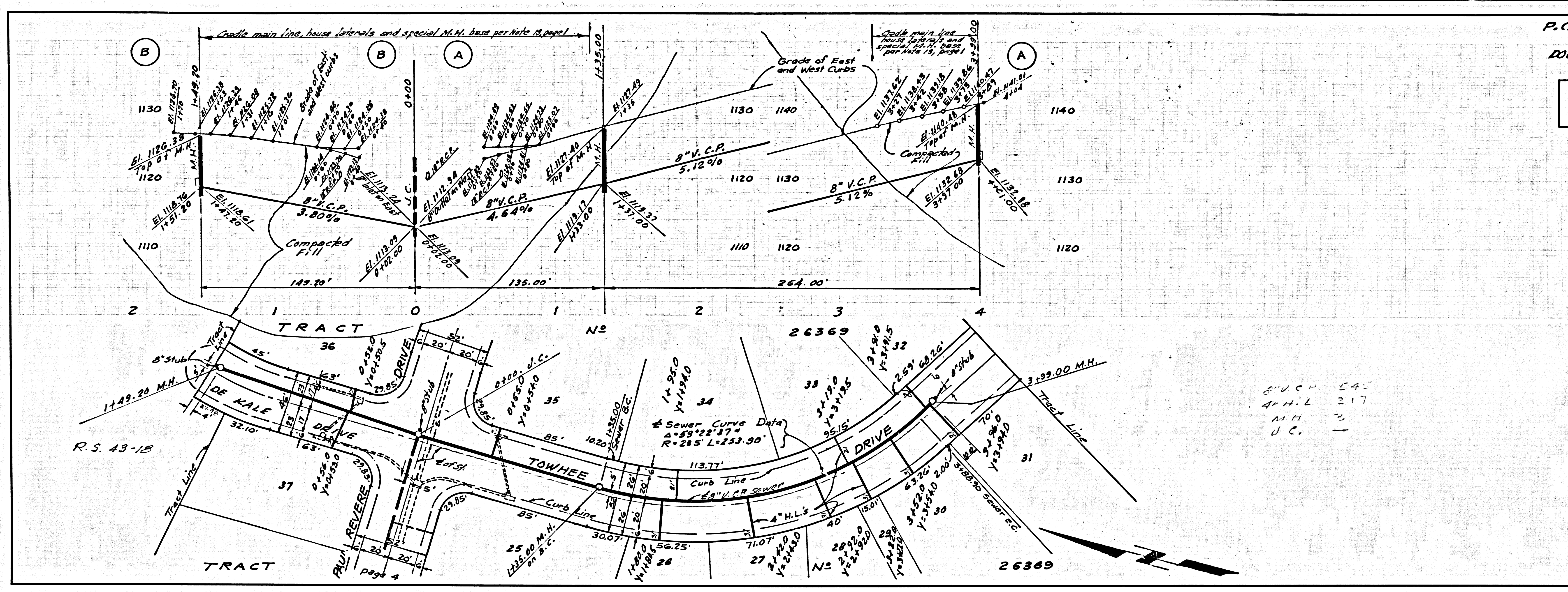
P.C. 7660 PAGE 4
DOUBLE SCALE
SEE L.V.M.W.D. FOR CHARGES AND PERMITS

39278

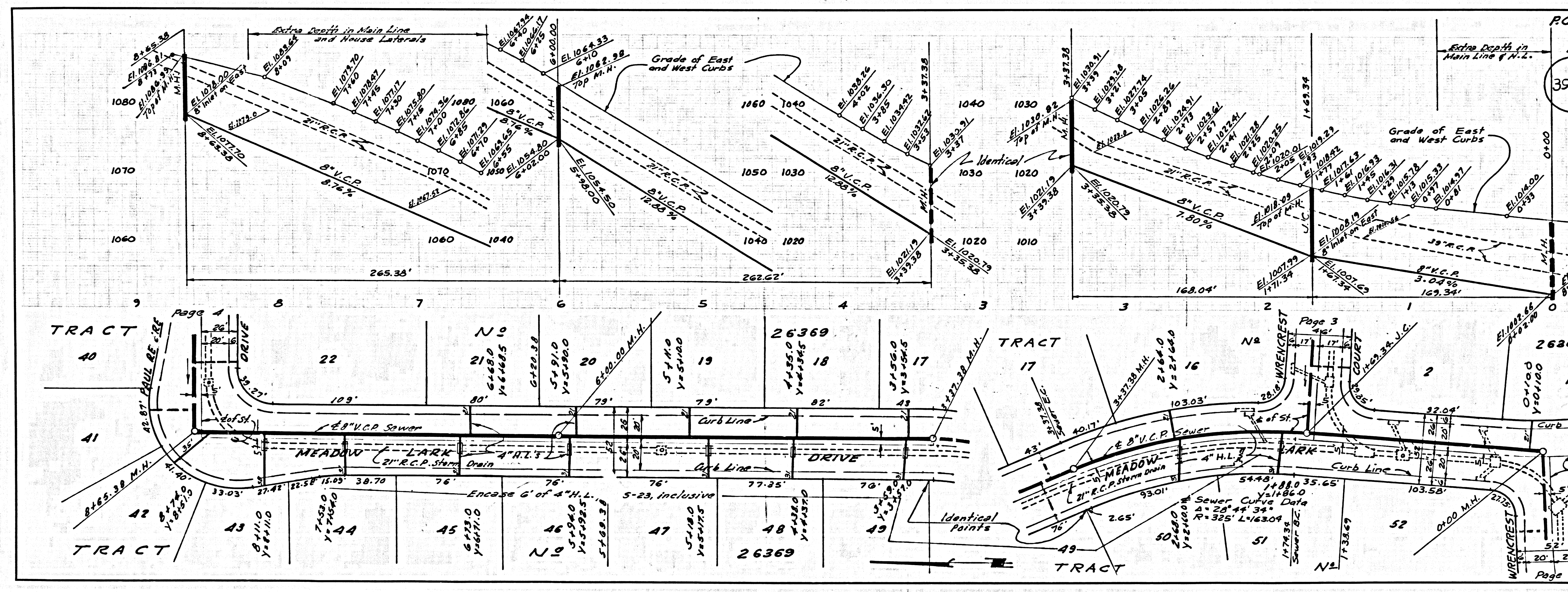


M-E DRAWING CO. L.A. COUNTY SEWER SHEET NO. 2 EQ. CAL. BLUEPRINT CO.

39277
39278
TRACT 26369



P.C. 7660 PAGE 5
 DOUBLE SCALE
 SEE L.V.M.W.D.
 FOR CHARGES
 AND PERMITS
 39275



P.C. 7660 PAGE 6
 DOUBLE SCALE
 39276
 SEE L.V.M.W.D.
 FOR CHARGES
 AND PERMITS

0501.07 23335W 10A11