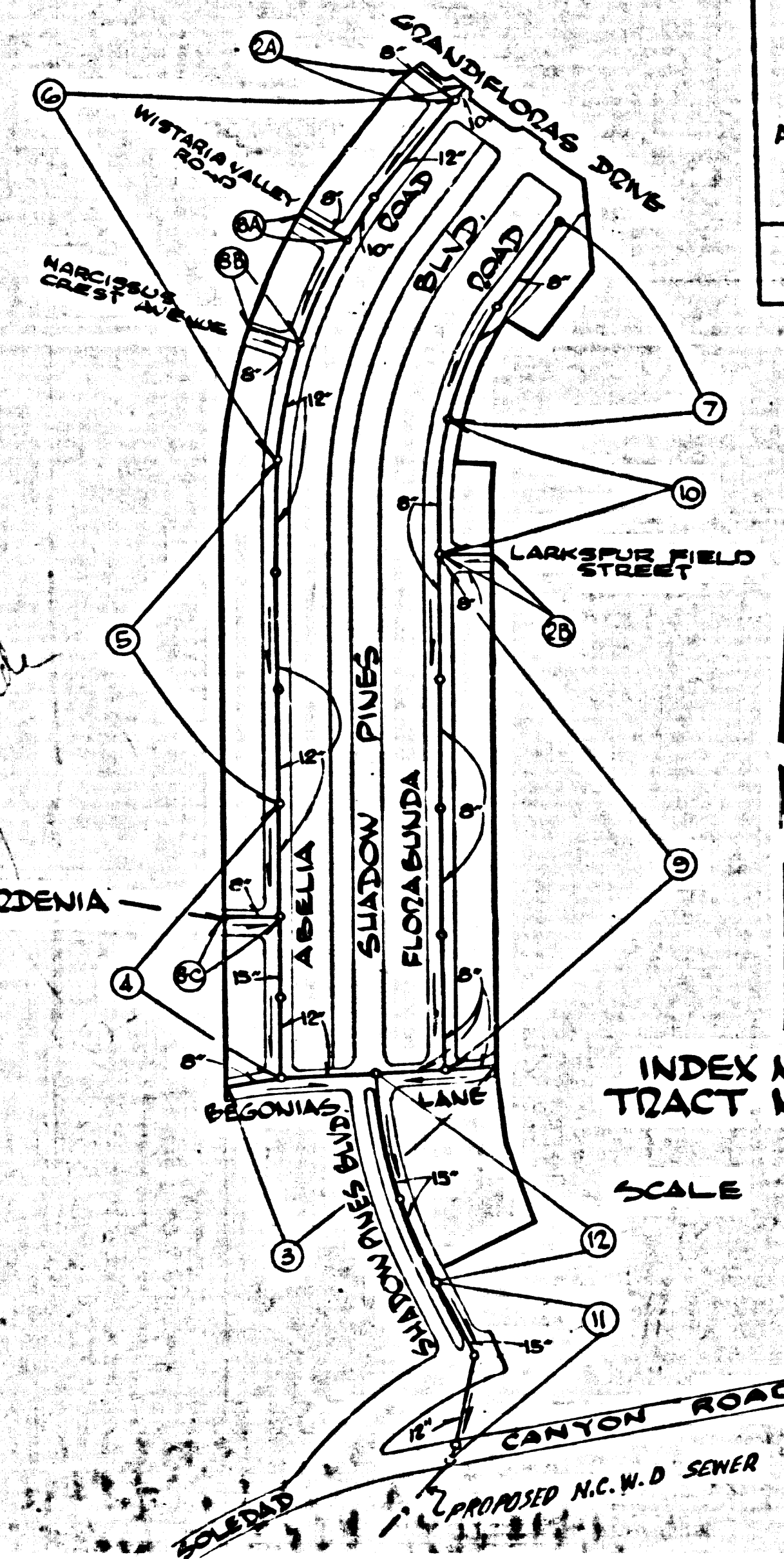


B.M. SL 1626 ELEV. 1568.150
 USC * GS BR CAP W END H HOLE, SPFR CULV. NO ALI 24
 LOC 300 FT NLY ALB RR FROM OVERPASS ABOVE SMO
 SPRINGS CN RD + ACPT N OF CTR TRACKS - SAID
 OVERPASS BRIDGE DIM SLY ALB CMC SPRINGS CN
 RD FROM ACT WITH LIGHT CN RD WND (7-486-1989)
 NEWHALL QUAD. 19 58

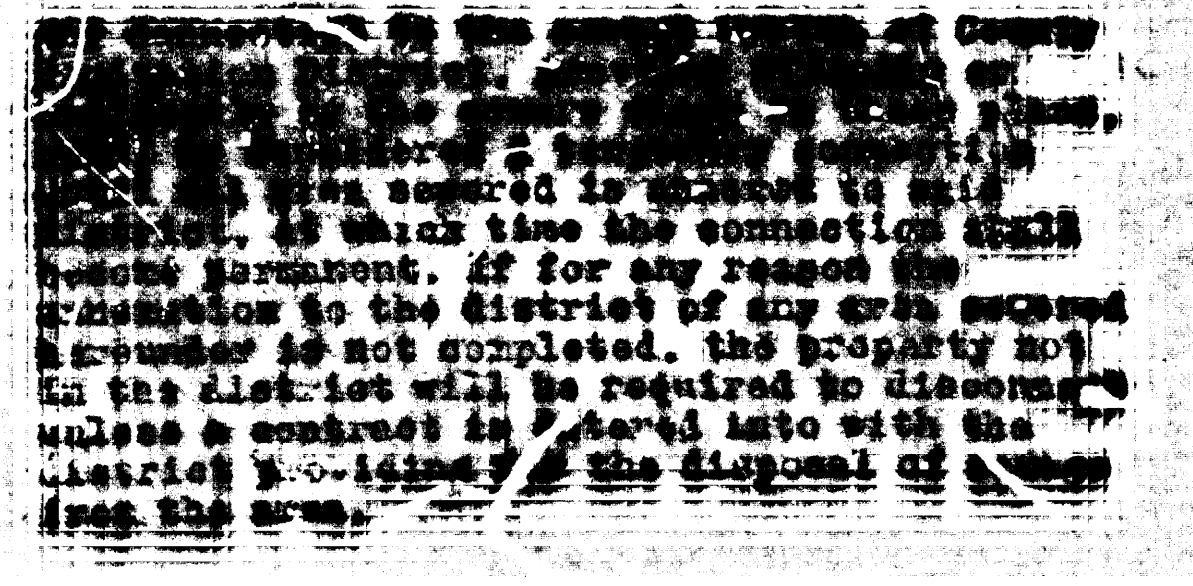


FOR THE NEWHALL COUNTY WATER DISTRICT
 APPROVED BY: *J. D. Parkhurst* Date 2/13/1966
 T.V. TALON P.E. M.E. 2104
 CHIEF ENGINEER AND GENERAL MANAGER
 NEWHALL COUNTY WATER DIST.

ISSUE NO HOUSE CONNECTION PERMITS
 UNTIL R/W IS GRANTED TO COUNTY OF LA.
 CALL SANITATION DIVISION.
 ISSUE NO HOUSE CONNECTION PERMITS
 UNTIL OUTLET SEWERS ARE AVAILABLE
 TO SERVE THIS TRACT.
 CALL SANITATION DIVISION.

LOTS 146 THRU 150 ARE BEING
 USED FOR FLOOD CONTROL PURPOSES

SPECIAL NOTE "A"
 Prior to obtaining any connections, all areas
 relating to SPECIAL NOTE "A" must:
 1. Secure permission from The Newhall County
 Water District for use of its outlet
 sewer facilities.



NEWHALL BLDG. DIST. NO. 8.2

- NOTES:
1. PROVIDE STAKES ON THE PROPERTY LINE OR PROPERTY LINES PRODUCED AT RIGHT ANGLES TO THE SEWER LINE AT THE CENTER LINE OF EACH MANHOLE.
 2. NO REPRESENTATIVE OF THE COUNTY ENGINEER WILL SURVEY OR LAY OUT ANY PORTION OF THE WORK.
 3. THE PRIVATE ENGINEER SHALL FURNISH THE COUNTY ENGINEER WITH GRADE SHEETS AND STATIONING FOR ALL HOUSE LATERALS AND Y BRANCHES AND SHALL PROVIDE STAKES FOR THESE AT THEIR PROPER LOCATIONS WITH STATIONING PLAINLY MARKED. ALL HOUSE LATERALS SHALL BE CONSTRUCTED IN A STAGGAT ALIGNMENT AT RIGHT ANGLES FROM THE MAIN LINE SEWER EXCEPT AS SHOWN ON THE PLANS. HOUSE LATERALS FROM CHIMNEYS SHALL NOT HAVE AN ANGLE OF LESS THAN 45° WITH THE MAIN LINE SEWER. ANY CHANGE IN ALIGNMENT SHALL BE REQUESTED BY WRITING BY THE PRIVATE ENGINEER.
 4. THE PRIVATE ENGINEER SHALL FURNISH THE HOUSE LATERAL BENEATH AT THE PROPERTY LINE BELOW THE TOP OF CURB RELEVATION FOR EACH HOUSE LATERAL ON THE GRADE SHEET.
 5. NO REVISIONS SHALL BE MADE IN THESE PLANS WITHOUT THE APPROVAL OF THE COUNTY ENGINEER.
 6. THE CONTRACTOR SHALL NOTIFY THE CONSTRUCTION DIVISION BY TELEPHONE, MARSHEN 9-2727, EXT. 8119, AT LEAST TWENTY-FOUR HOURS BEFORE STARTING ANY WORK UNDER THIS CONTRACT.
 7. ALL STRUCTURES SHALL BE EITHER BRICK MANHOLES PER 3-3 OR 3-6 OR PRECAST CONCRETE MANHOLES PER 3-5 OR 3-6 EXCEPT AS NOTED.
 8. THE STANDARD MANHOLE FRAMES AND COVERS, 2-15 EXCEPT AS NOTED.
 9. MANHOLE TOPS IN UNIMPROVED AREAS OR WAY TO BE SEE INCHES ABOVE FINISHED GRADE.
 10. USE EXTRA STRENGTH PIPE, ALL PIPE IS STANDARD DEPTH EXCEPT AS NOTED.
 11. USE CEMENT MORTAR OR MECHANICAL COMPRESSION JOINTS FOR ALL V.C.P. JOINTS PER SPEC., SECS. 36 & 48.
 12. WHERE EYE GROUND WATER IS ENCOUNTERED DURING THE CONSTRUCTION OF THE SEWER, THE V.C.P. JOINTS SHALL BE OF JOINT COMPOUND PER SPEC., SECS. 33 & 48, OR MECHANICAL COMPRESSION JOINTS PER SPEC., SEC. 34.
 13. IF A POWER POLE IS WITHIN THREE FEET OF THE SEWER, THE SEWER SHALL BE ENCASED, PER 3-25 TWO FEET ON EITHER SIDE FROM THE POINT OF INTERFERENCE.
 14. IF DURING THE COURSE OF CONSTRUCTION IT IS DETERMINED THAT THERE IS LESS THAN FOUR FEET OF COVER OVER THE TOP OF A MAIN LINE OR HOUSE LATERAL V.C.P. SEWER WHICH IS NOT INDICATED ON THE PLANS, THE PIPE SHALL BE ENCASED PER 3-23 UNLESS OTHERWISE APPROVED BY THE COUNTY ENGINEER.
 15. HOUSE LATERALS TO BE CONSTRUCTED WITH INVERTS AT PROPERTY LINE... FEET BELOW CURB GRADE EXCEPT AS NOTED.
 16. REINFORCE ALL TRUNCHE WITH PAYAS ABAS TO MEET L.A. COUNTY ROAD DEPT. OR CALIFORNIA STATE HIGHWAY REQUIREMENTS IN ACCORDANCE WITH PERMITS.
 17. FOR ALL HIGHWAY EXCEPT TRUCK HIGHWAY, PER SPEC., SEC. 64.
 18. ALL STATE AND LOCAL TRUNK SAFETY ORDERS WILL BE RIGIDLY ENFORCED.
 19. ALL JOINTS BETWEEN CAST IRON PIPE AND RETICULATED CLAY PIPE SHALL BE MADE WITH RUBBER SLEEVE JOINT (WITH HOOP IF NECESSARY) PER SPEC. SEC. 30 OR APPROVED EQUAL.

PROFILE ALIGNMENT AND GRADE OF
 SANITARY SEWERS PAGE 1
 TO BE CONSTRUCTED IN

TRACT NO. 25006
 PRIVATE CONTRACT NO. 7662

W.S. 79-1-1
 6 SHEETS, 12 PAGES
 SCALE: VERT. 1" = 4'
 HORIZ. 1" = 40'
 NOV. 1966
 PREPARED IN THE OFFICES OF

ENGINEERING SERVICE CORPORATION
 J. R. Newhall
 REG. C.E. NO. 13025
 FOR LEGEND SEE STANDARD DRAWING S-1

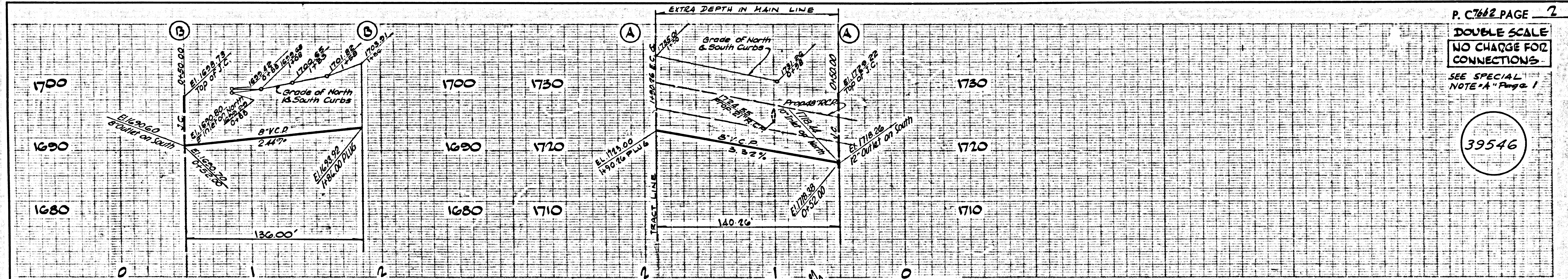
NOTE:
 GRADES TO WHICH THIS IMPROVEMENT IS TO BE CONSTRUCTED ARE SHOWN ON PLANS AND PROFILES. GRADE POINTS FOR TOP OF CURBS, CENTER LINE OF STREETS, OR CENTER LINE OF ALLEYS ARE SHOWN BY CIRCLES ON PROFILES. AT ALL POINTS BETWEEN DESIGNATED RELEVATIONS ARE IN FEET ABOVE U.S.C. & G.S. SEA LEVEL DATUM OF 1929. THE SEWER AND THE DISTRICT OFFICE SHALL BE CONSIDERED A PART OF THE SPECIFICATIONS. THIS SHALL BE CONSTRUCTED ACCORDING TO THE STANDARD SPECIFICATIONS PER 3-3, 3-5, 3-6, 3-7, 3-8, 3-9, 3-10, 3-11, 3-12, 3-13, 3-14, 3-15, 3-16, 3-17, 3-18, 3-19, 3-20, 3-21, 3-22, 3-23, 3-24, 3-25, 3-26, 3-27, 3-28, 3-29, 3-30, 3-31, 3-32, 3-33, 3-34, 3-35, 3-36, 3-37, 3-38, 3-39, 3-40, 3-41, 3-42, 3-43, 3-44, 3-45, 3-46, 3-47, 3-48, 3-49, 3-50, 3-51, 3-52, 3-53, 3-54, 3-55, 3-56, 3-57, 3-58, 3-59, 3-60, 3-61, 3-62, 3-63, 3-64, 3-65, 3-66, 3-67, 3-68, 3-69, 3-70, 3-71, 3-72, 3-73, 3-74, 3-75, 3-76, 3-77, 3-78, 3-79, 3-80, 3-81, 3-82, 3-83, 3-84, 3-85, 3-86, 3-87, 3-88, 3-89, 3-90, 3-91, 3-92, 3-93, 3-94, 3-95, 3-96, 3-97, 3-98, 3-99, 3-100. APPROVAL OF THIS PLAN BY THE COUNTY OF LOS ANGELES DOES NOT CONSTITUTE A REPRESENTATION AS TO THE ACCURACY OF THE LOCATION OR OF THE EXISTENCE OR NON-EXISTENCE OF ANY UNDERGROUND UTILITY PIPE, OR STRUCTURE WITHIN THE LIMITS OF THE PROJECT. THIS NOTE APPLIES TO ALL PAGES.
 * WHEN TO BE DONE IN A STATE HIGHWAY, A PERMIT MUST BE OBTAINED FROM THE STATE OF CALIFORNIA, DIVISION OF HIGHWAYS, 120 SOUTH SPRING STREET, LOS ANGELES, CALIFORNIA.

REVISION NO. 3
 Encasement deleted on M.L. Sewer
 F3 8A 0+75 to 0+85
 F3 8C 0+75 to 0+95
 APPROVED *William*
 Office of County Eng. RE. No. 11371
 2-23-66

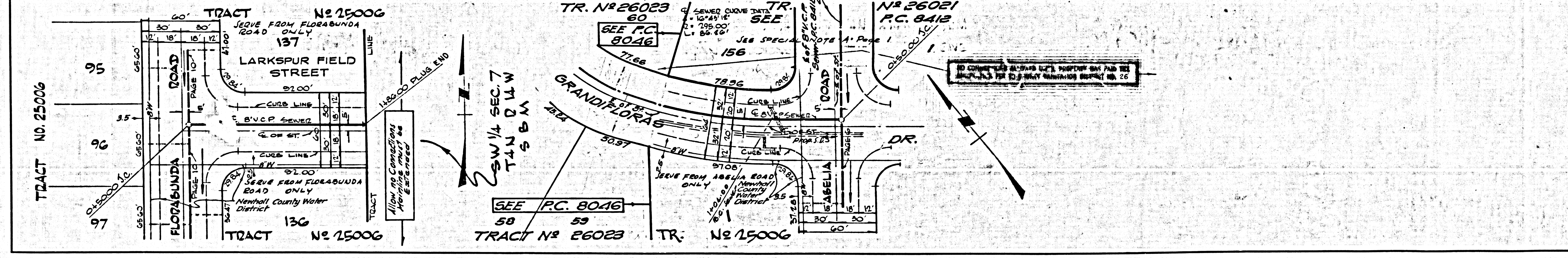
COLLECT CHARGES
 AS INDICATED
Ralph Schep

REVISION NO. 1
 Encasement of M.L. Sewer on pp. 3
 between Sta. 1+92.2+02 & 2+35.3+05,
 on pg. 8(A) between 0+75-0+85
 on pg. 8(C) between 0+75-0+85
 APPROVED *William* 2/14/67
 Office of County Eng. RE. No. 3406

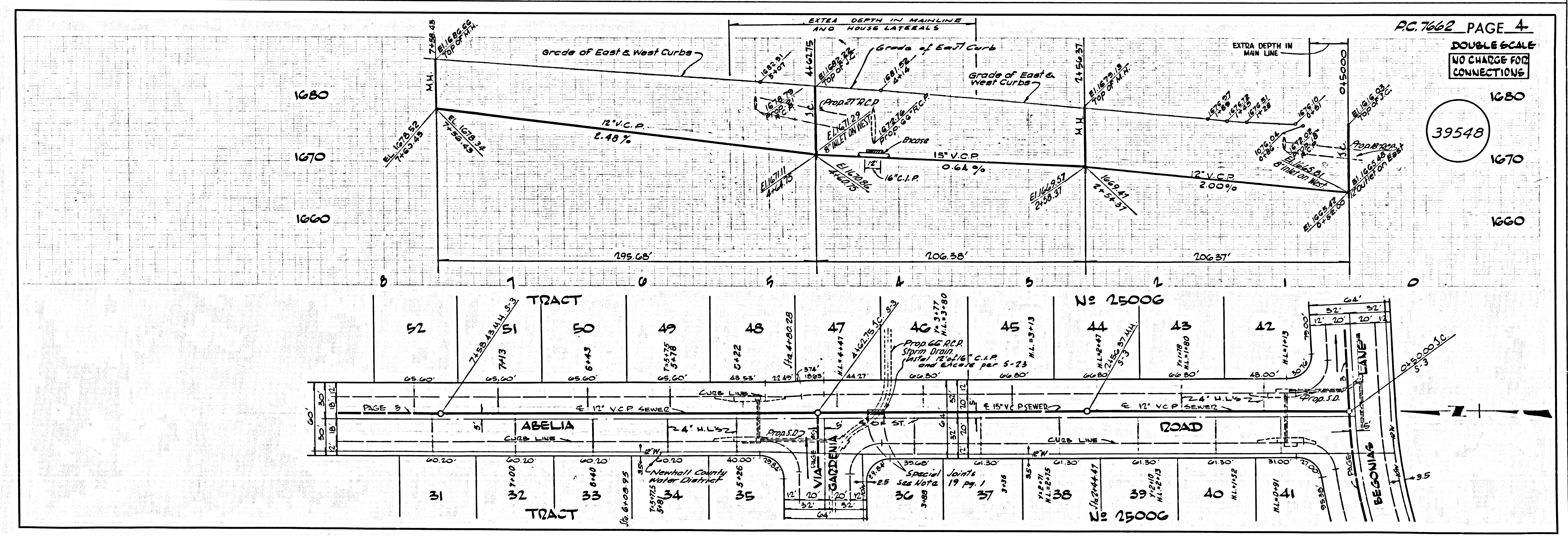
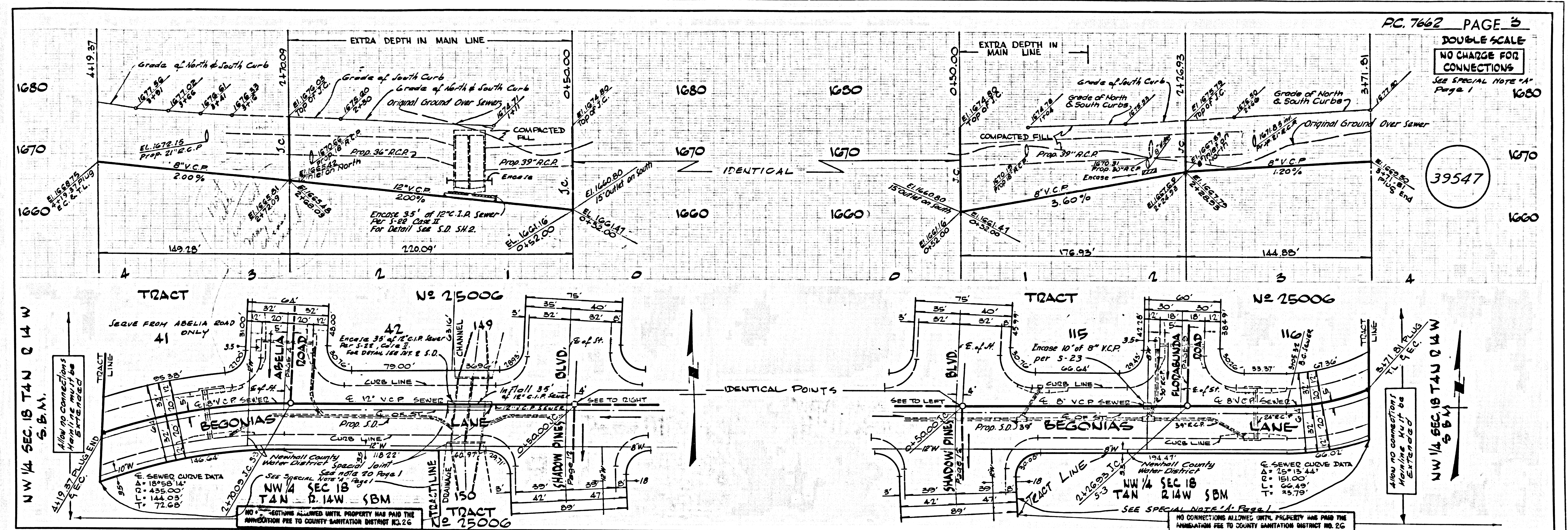
COUNTY OF LOS ANGELES, CALIFORNIA
 JOHN A. LAMBIE, COUNTY ENGINEER
 J. D. PARKHURST, CHIEF ENGINEER
 APPROVED BY: *Richard M. Coon*
 ASSISTANT SANITATION ENGINEER
 SUBMITTED BY: *John D. Henderson*
 REGIONAL ENGINEER
 CHECKED BY: *Ralph Schep* 3/15/67
 REG. C.E. NO. 13406
 J. N. 0367.63

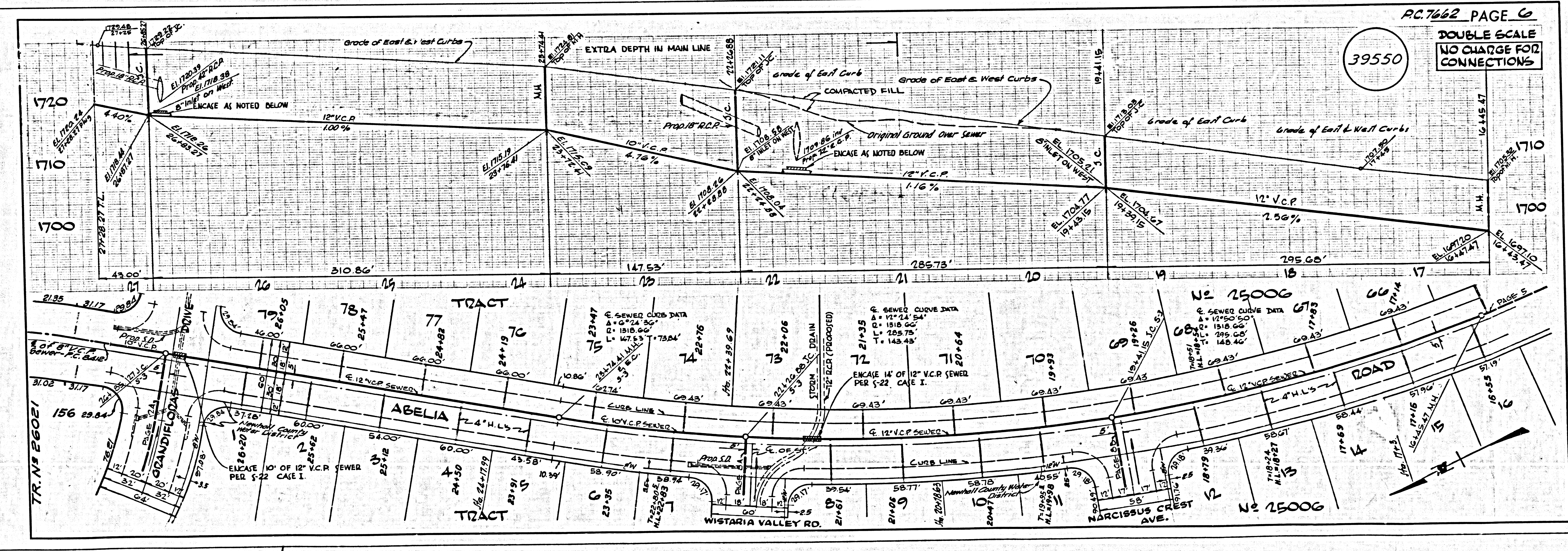
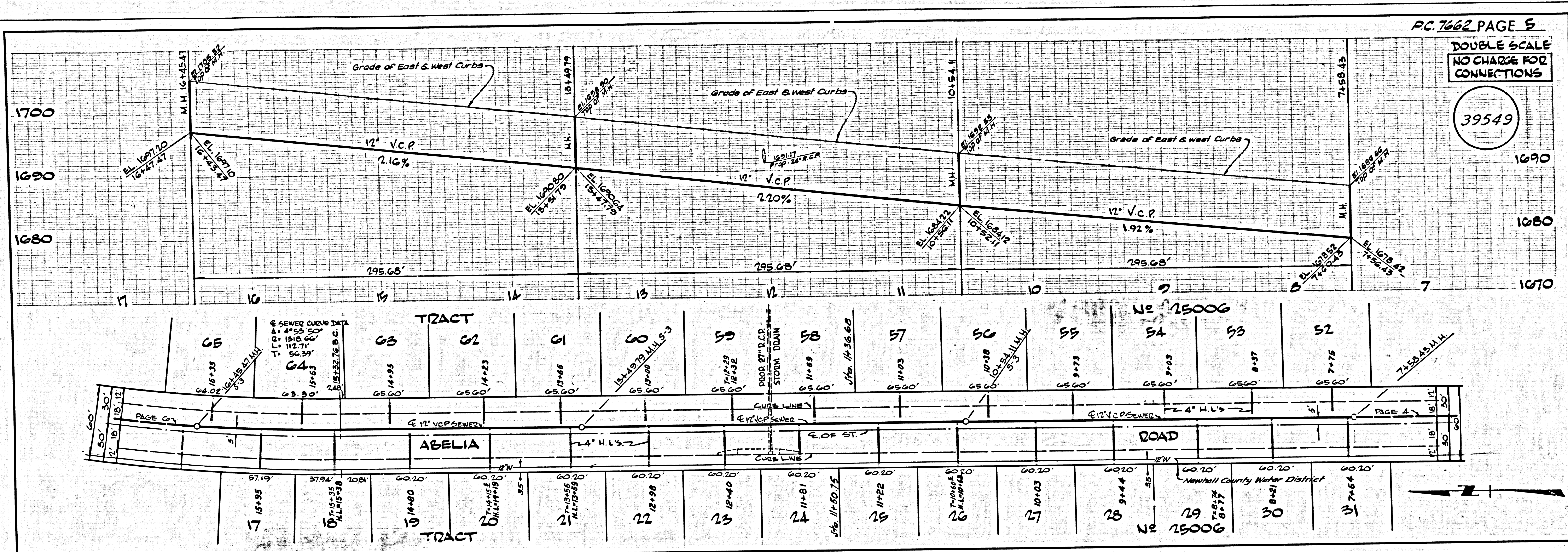


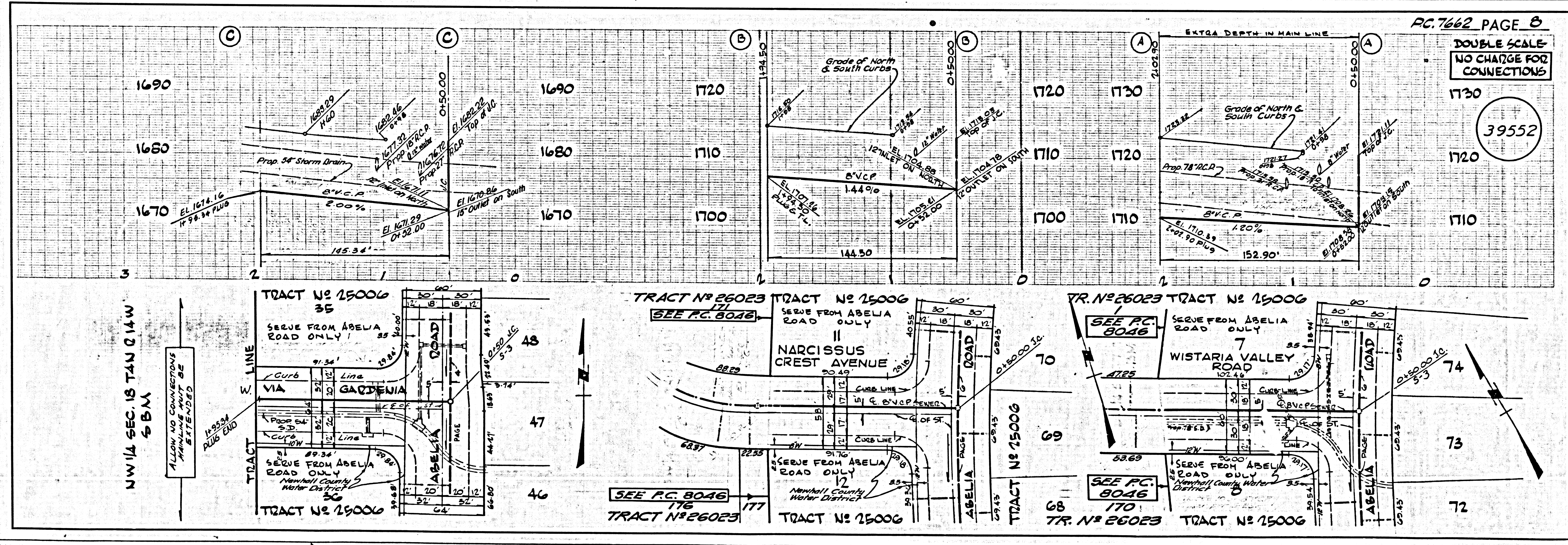
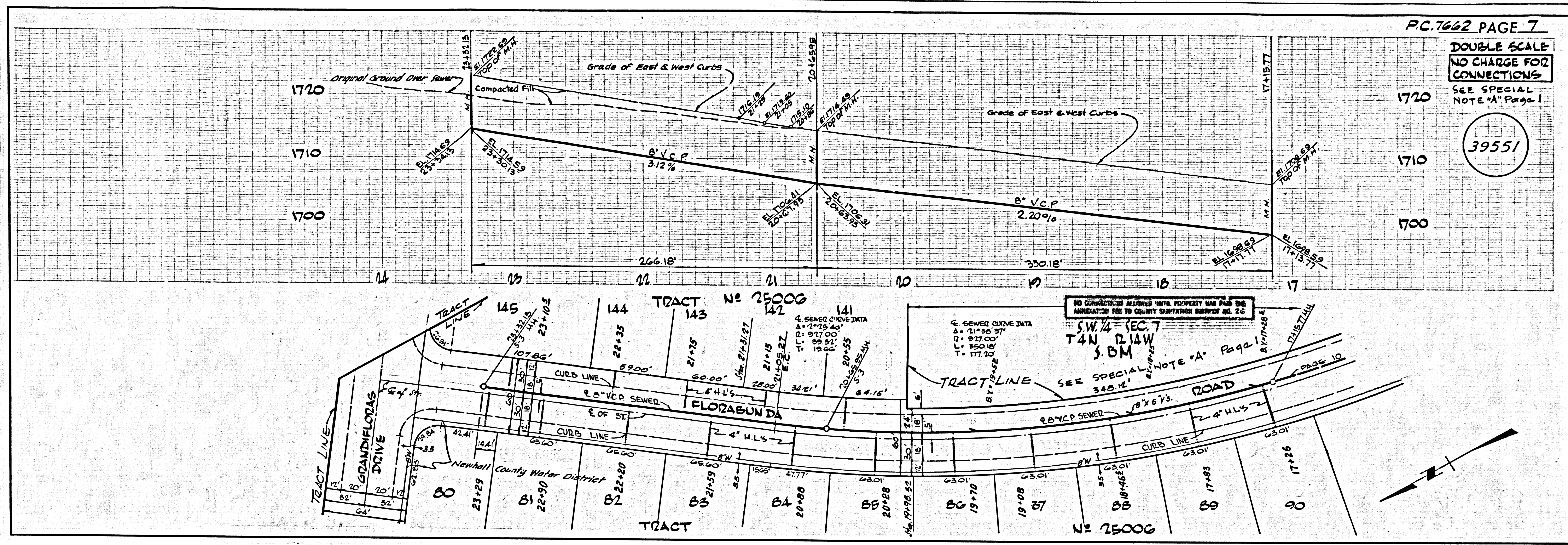
P. 7662 PAGE 2
 DOUBLE SCALE
 NO CHARGE FOR
 CONNECTIONS
 SEE SPECIAL
 NOTE "A" Page 1
 39546



1492 to 240







U.S.G.S. 1984 L.A. COUNTY SEWER SHEET NO. 4 ENGINEER SERVICE CO.

