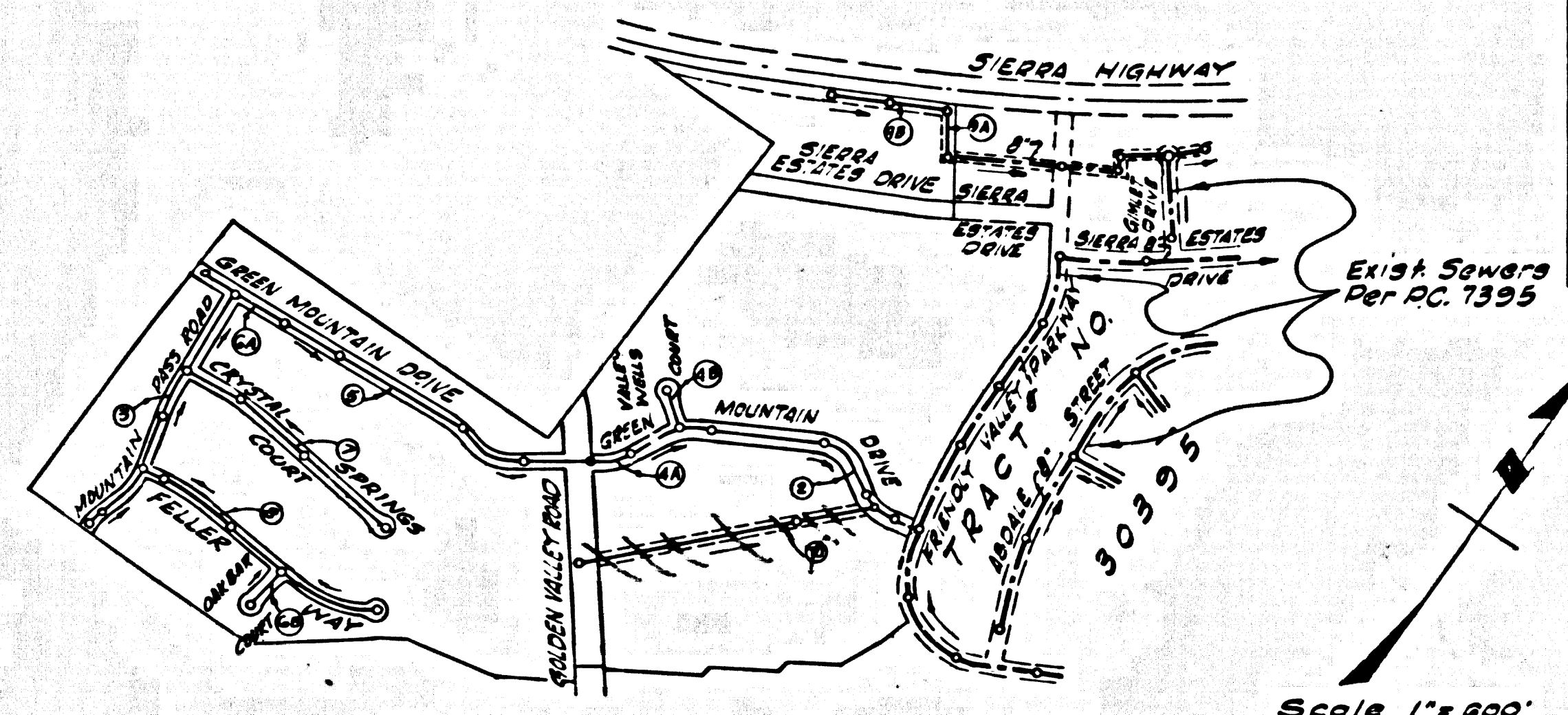


B.M. S.L. 942 ELEV. 1423.098  
 U.S.C. 163 Mon 310m 200' E 438-1553 in  
 N 1/4 cor of W 1/4 cor S.R. 2 Box 100  
 #444.22 under Sierra Hwy. Bridge G.M.  
 S 1/4 of Soreco Cyn. Rd. G. N.Y. of N.Y. Rail  
 1/4 of Sierra Hwy.  
 NEWHALL  
 QUAD. 19 58

REVISIONS:  
 Page 2 - Relocated manhole from Sta. 2+16.83 to Sta. 2+34.93.  
 Page 10 - Revised elevations between manhole at Sta. 1+00.00 to manhole at Sta. 2+30.00.  
 Ralph Schaefer 1/19/67

REVISION:  
 Page 9 - Changed the surface grade over the sewer from Sta. 22+22.79 to Sta. 26+27.79. M.H.'s to 6" above grade.  
 APPROVED  
 Ralph Schaefer P.E. RCE 13906  
 Office of the County Engineer



INDEX MAP  
 P.C. 7682  
 TRACT NO. 30396

NUMBERS IN CIRCLES INDICATE PAGE NUMBER

Any connection to the sewage system of County Sanitation District, provided directly or indirectly by the sewers shown on these plans, shall be considered a temporary connection until all area sewer is annexed to said district, at which time the connection shall become permanent. If for any reason the annexation to the district of any area sewer hereunder is not completed, the property not in the district will be required to disconnect unless a contract is entered into with the district providing for the disposal of sewage from the area.

LOTS 2, 3, 4 and 5 SERVED FROM RC. 7395

Allow No House Sewer Connections Until Tract No. 30396 is Recorded

NO CONNECTIONS FOR THE DISPOSAL OF INDUSTRIAL WASTES SHALL BE MADE TO SEWERS SHOWN ON THESE DRAWINGS WITHOUT WRITTEN PERMISSION FROM THE CHIEF ENGINEER AND GENERAL MANAGER OF THE COUNTY SANITATION DISTRICTS.

DOUBLE SCALE  
 NEWHALL BLDG. DIST. NO. 8.2

PROFILE, ALIGNMENT AND GRADE OF  
 SANITARY SEWERS PAGE 1  
 CONSTRUCTED IN

TRACT NO. 30396

PRIVATE CONTRACT NO. 7682

W.S. 62-C-3  
 5 SHEETS, 10 PAGES

SCALE: VERT. 1" = 8'  
 HORIZ. 1" = 20'  
 JUNE 14, 1966

PREPARED IN THE OFFICES OF  
 PRECISION INCORPORATED

Arthur S. Shurtliff  
 REG. C. E. NO. 2254

FOR LEGEND SEE PLAN NO. S-1

- NOTES
- PROVIDE STAKES ON THE PROPERTY LINE OR PROPERTY LINES PRODUCED AT RIGHT ANGLES TO THE SEWER LINE AT THE CENTER LINE OF EACH MANHOLE.
  - NO REPRESENTATIVE OF THE COUNTY ENGINEER WILL SURVEY OR LAY OUT ANY PORTION OF THE WORK.
  - THE PRIVATE ENGINEER SHALL FURNISH THE COUNTY ENGINEER WITH GRADE SHEETS AND ELEVATIONS FOR ALL HOUSE LATERALS AND "T" BRANCHES AND SHALL PROVIDE STAKES FOR THEM AT THEIR PROPER LOCATIONS WITH STATIONING PLAINLY MARKED. ALL HOUSE LATERALS SHALL BE CONSTRUCTED IN A STRAIGHT ALIGNMENT AT RIGHT ANGLES FROM THE MAIN LINE SEWER EXCEPT AS SHOWN ON THE PLANS. HOUSE LATERALS FROM CHIMNEYS SHALL NOT HAVE AN ANGLE OF LESS THAN 45° WITH THE MAIN LINE SEWER. ANY CHANGE IN ALIGNMENT SHALL BE REQUESTED IN WRITING BY THE PRIVATE ENGINEER.
  - THE PRIVATE ENGINEER SHALL FURNISH THE HOUSE LATERAL DEPTH AT THE PROPERTY LINE BELOW THE TOP OF CURB ELEVATION FOR EACH HOUSE LATERAL ON THE GRADE SHEET.
  - NO REVISIONS SHALL BE MADE IN THESE PLANS WITHOUT THE APPROVAL OF THE COUNTY ENGINEER.
  - THE CONTRACTOR SHALL NOTIFY THE CONSTRUCTION DIVISION BY TELEPHONE, HADSON 9-427, EXT. 8151, AT LEAST TWENTY-FOUR HOURS BEFORE STARTING ANY WORK UNDER THIS CONTRACT.
  - MANHOLES SHALL BE BUILT SEWER STRUCTURES PER S-3. PRECAST CONCRETE MANHOLES PER S-3 OR S-4 MAY BE USED AS AN ALTERNATE IN LOCATIONS APPROVED BY THE COUNTY ENGINEER.
  - USE STANDARD MANHOLE FRAMES AND COVERS, S-1, EXCEPT AS NOTED.
  - MANHOLE TOPS IN UNIMPROVED RIGHTS-OF-WAY TO BE SIX INCHES ABOVE FINISHED GRADE.
  - USE EXTRA STRENGTH PIPE. ALL PIPE IS STANDARD DEPTH EXCEPT AS NOTED.
  - USE MECHANICAL JOINTS FOR ALL V.C.P. JOINTS PER S.P.C.S., SECS. 24, 48 & 49.
  - IF A POWER POLE IS WITHIN THREE FEET OF THE SEWER, THE SEWER SHALL BE ENCASED, PER S-23, TWO FEET ON EACH SIDE FROM THE POINT OF INTERFERENCE.
  - IF DURING THE COURSE OF CONSTRUCTION IT IS DETERMINED THAT THERE IS LESS THAN FOUR FEET OF COVER OVER THE TOP OF A MAIN LINE OR HOUSE LATERAL V.C.P. SEWER WHICH IS NOT INDICATED ON THE PLANS, THE PIPE SHALL BE ENCASED PER S-23, UNLESS OTHERWISE APPROVED BY THE COUNTY ENGINEER.
  - HOUSE LATERALS TO BE CONSTRUCTED WITH INVERTS AT PROPERTY LINE 6 FEET BELOW CURB GRADE EXCEPT AS NOTED.
  - RESURFACE ALL TRENCHES WITHIN PAVED AREAS TO MEET L.A. COUNTY ROAD DEPT. OR CALIFORNIA STATE HIGHWAY REQUIREMENTS IN ACCORDANCE WITH PERMITS.
  - FOR ALLOWABLE LOADS TRY USE FORMULA NO. 2, S.P.C.S., SEC. 34.
  - ALL STATE AND LOCAL TRENCH SAFETY ORDINANCES WILL BE STRICTLY ENFORCED.
  - A - NO CONSTRUCTION WILL BE PERMITTED IN FILLED AREAS UNLESS ACCEPTABLE CERTIFICATION IS SUBMITTED TO THE CONSTRUCTION DIVISION OF THE COUNTY ENGINEER'S DEPT., THAT RELATIVE COMPACTION IS GREATER THAN 80%.
  - B - IF COMPACTION IS LESS THAN 80% THE SEWER MUST BE CRAPLED AS SHOWN ON THE PLANS PER S-23 AND SPECIAL M.A. BASES PROVIDED PER S-14.
  - C - IF COMPACTION IS GREATER THAN 80% CRAPLING IS NOT REQUIRED.
  - UPON ACCEPTABLE CERTIFICATION TO THE CONSTRUCTION DIVISION OF THE COUNTY ENGINEER THAT RELATIVE COMPACTION IS GREATER THAN 80%, BRICKS PER S-14 WILL NOT BE REQUIRED.
  - ON BRACKS OF 30% OR MORE, CONSTRUCT ANCHOR BLOCKS PER S-14.
  - LENGTHS OF PIPE NOT MORE THAN 25 FT. IN LENGTH SHALL BE USED ON ALL CURVES HAVING A RADIUS OF LESS THAN 150 FT.
  - ALL HOUSE LATERALS TO BE 4" EXCEPT WHERE NOTED.

NOTE:  
 GRADES TO WHICH THE IMPROVEMENT IS TO BE CONSTRUCTED ARE SHOWN ON PLANS AND PROFILES. GRADE POINTS FOR TOP OF CURB, CENTER LINE OF STREETS, OR CENTER LINE OF ALLEYS ARE SHOWN BY CIRCLES ON PROFILES. AT ALL POINTS BETWEEN DESIGNATED POINTS THE GRADE SHALL BE ESTABLISHED SO AS TO CONFORM TO A STRAIGHT LINE DRAWN BETWEEN SAID DESIGNATED POINTS. ELEVATIONS ARE IN FEET ABOVE U.S.C. & G.S. SEA LEVEL DATUM OF 1929.

THIS DRAWING AND THE DATA HEREON ARE HEREBY MADE A PART OF THE SPECIFICATIONS. THE CONTRACTOR SHALL BE RESPONSIBLE FOR OBTAINING ALL NECESSARY PERMITS FROM THE L.A. COUNTY DEPT. DISTRICT OFFICE NO. 28 AND PAY A FEE TO THE COUNTY ENGINEER, ROOM 300, COUNTY ENGINEERING BUILDING, 120 WEST SECOND STREET, LOS ANGELES, CALIFORNIA. THE CONTRACTOR MUST OBTAIN A PERMIT TO EXCAVATE IN COUNTY STREETS FROM THE L.A. COUNTY DEPT. DISTRICT OFFICE NO. 28 AND PAY A FEE TO THE COUNTY ENGINEER, ROOM 300, COUNTY ENGINEERING BUILDING, 120 WEST SECOND STREET, LOS ANGELES, CALIFORNIA. THE CONTRACTOR MUST OBTAIN A PERMIT TO EXCAVATE IN COUNTY STREETS FROM THE L.A. COUNTY DEPT. DISTRICT OFFICE NO. 28 AND PAY A FEE TO THE COUNTY ENGINEER, ROOM 300, COUNTY ENGINEERING BUILDING, 120 WEST SECOND STREET, LOS ANGELES, CALIFORNIA. THE CONTRACTOR MUST OBTAIN A PERMIT TO EXCAVATE IN COUNTY STREETS FROM THE L.A. COUNTY DEPT. DISTRICT OFFICE NO. 28 AND PAY A FEE TO THE COUNTY ENGINEER, ROOM 300, COUNTY ENGINEERING BUILDING, 120 WEST SECOND STREET, LOS ANGELES, CALIFORNIA.

COUNTY OF LOS ANGELES, CALIFORNIA  
 JOHN A. LAMBE, COUNTY ENGINEER  
 APPROVED BY: [Signature]  
 ASSISTANT SANITATION ENGINEER

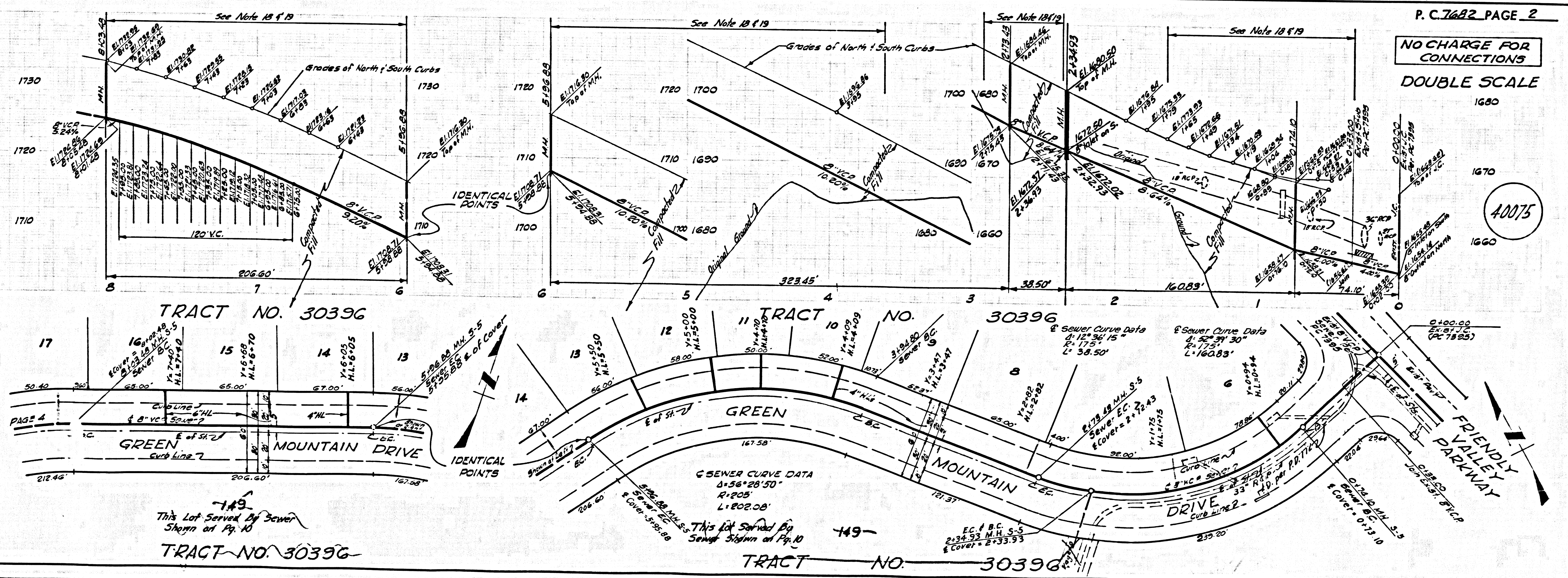
J. D. PARKHURST, CHIEF ENGINEER  
 APPROVED BY: [Signature]  
 OFFICE ENGINEER

SUBMITTED BY: [Signature]  
 REGIONAL ENGINEER  
 CHECKED BY: Ralph Schaefer P.E. 13906  
 REG. C.E. NO. 13786

COLLECT CHARGES AS INDICATED  
 Ralph Schaefer

NOTICE TO CONTRACTORS:  
 THE EXISTENCE AND LOCATION OF ANY UNDERGROUND UTILITY PIPES OR STRUCTURES SHOWN ON THESE PLANS ARE OBTAINED BY A SEARCH OF THE AVAILABLE RECORDS. TO THE BEST OF MY KNOWLEDGE THERE ARE NO EXISTING UTILITIES EXCEPT AS SHOWN ON THESE PLANS. THE CONTRACTOR IS REQUIRED TO TAKE THE NECESSARY PRECAUTIONARY MEASURES TO PROTECT ANY UTILITIES NOT SHOWN ON THESE PLANS.  
 Arthur S. Shurtliff  
 REG. C.E. NO. 9954

J.N. 036778



TRACT NO. 30396

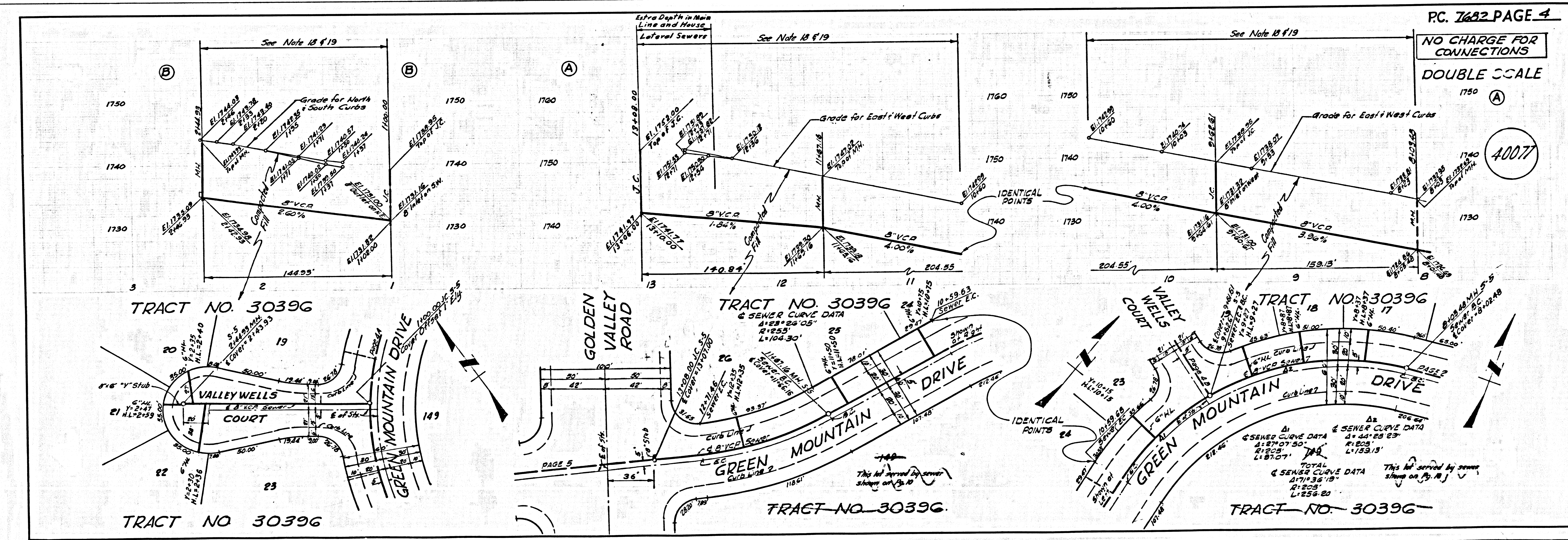
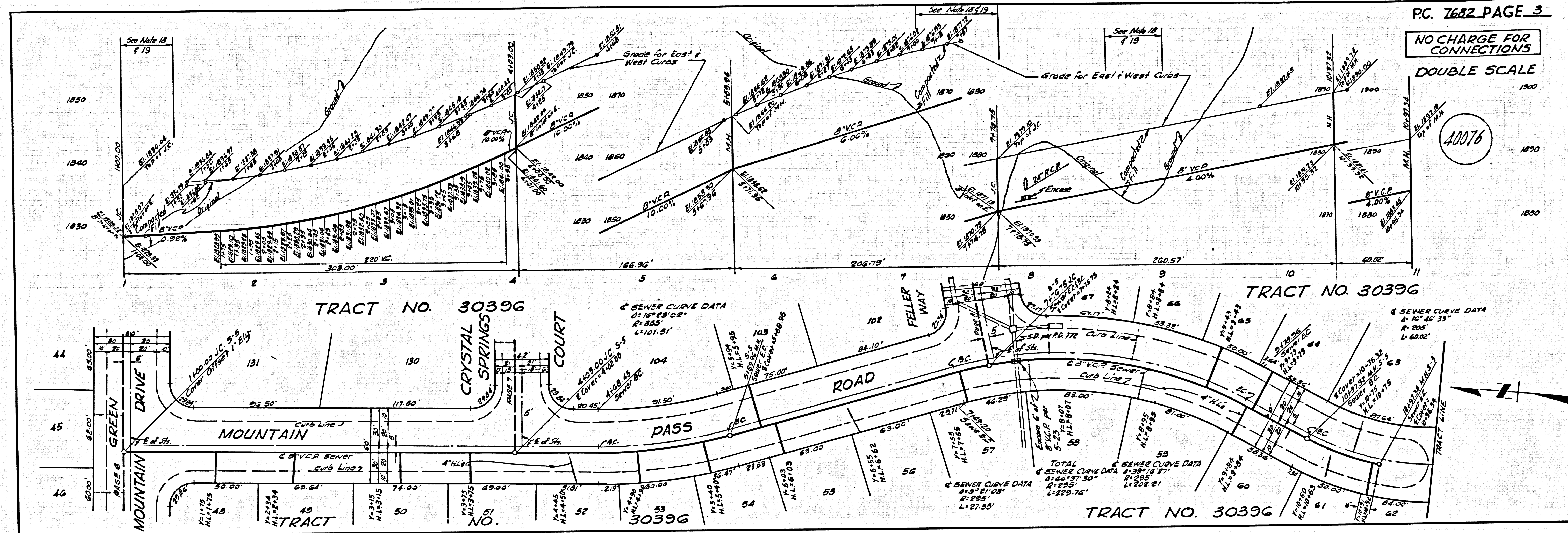
P. C. 7682 PAGE 2

NO CHARGE FOR CONNECTIONS  
 DOUBLE SCALE

40075

This Lot Served by Sewer Shown on Pg. 10  
 TRACT NO. 30396

TRACT NO. 30396



LA COUNTY SEWER SHEET NO. 2 SOUTHERN CALIFORNIA BLUEPRINT CO.

