

REVISIONS			
MARK	DATE	DESCRIPTION	

See Sheet 4 for Storm Drain Plan

The sewer shown in section 1 of V.B. is to be constructed before starting construction of the Double Barrel 6\"/>

See Sheets 7 & 8 for Storm Drain Plan

NOTES:
Existing 8\"/>

1964 STORM DRAIN BOND ISSUE
LOS ANGELES COUNTY
FLOOD CONTROL DISTRICT
COUNTY
PROJECT NO. 1214
SANITARY SEWER RECONSTRUCTION
PLAN AND PROFILE

PREPARED BY
JOHN A. LAMBIE
COUNTY ENGINEER

RECOMMENDED BY
P.C. 7683 1st 3

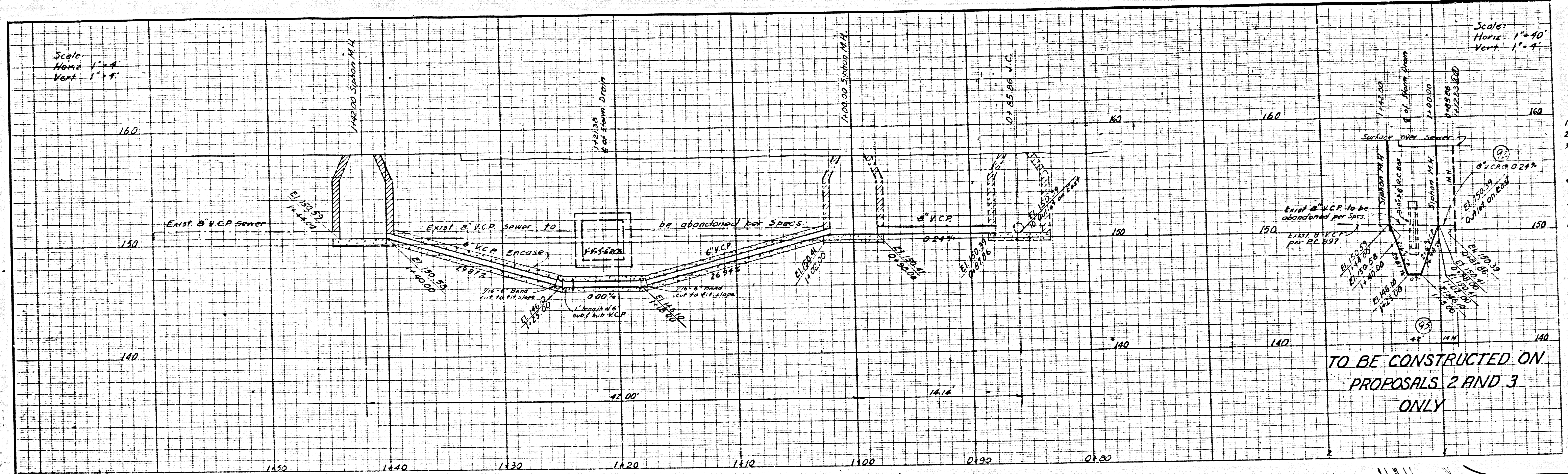
APPROVED BY
John D. Parkhurst
CHIEF ENGINEER
CO. SAN. DIST. NO. 18

SCALE
HORIZ. 1\"/>

DATE
NOV. 67

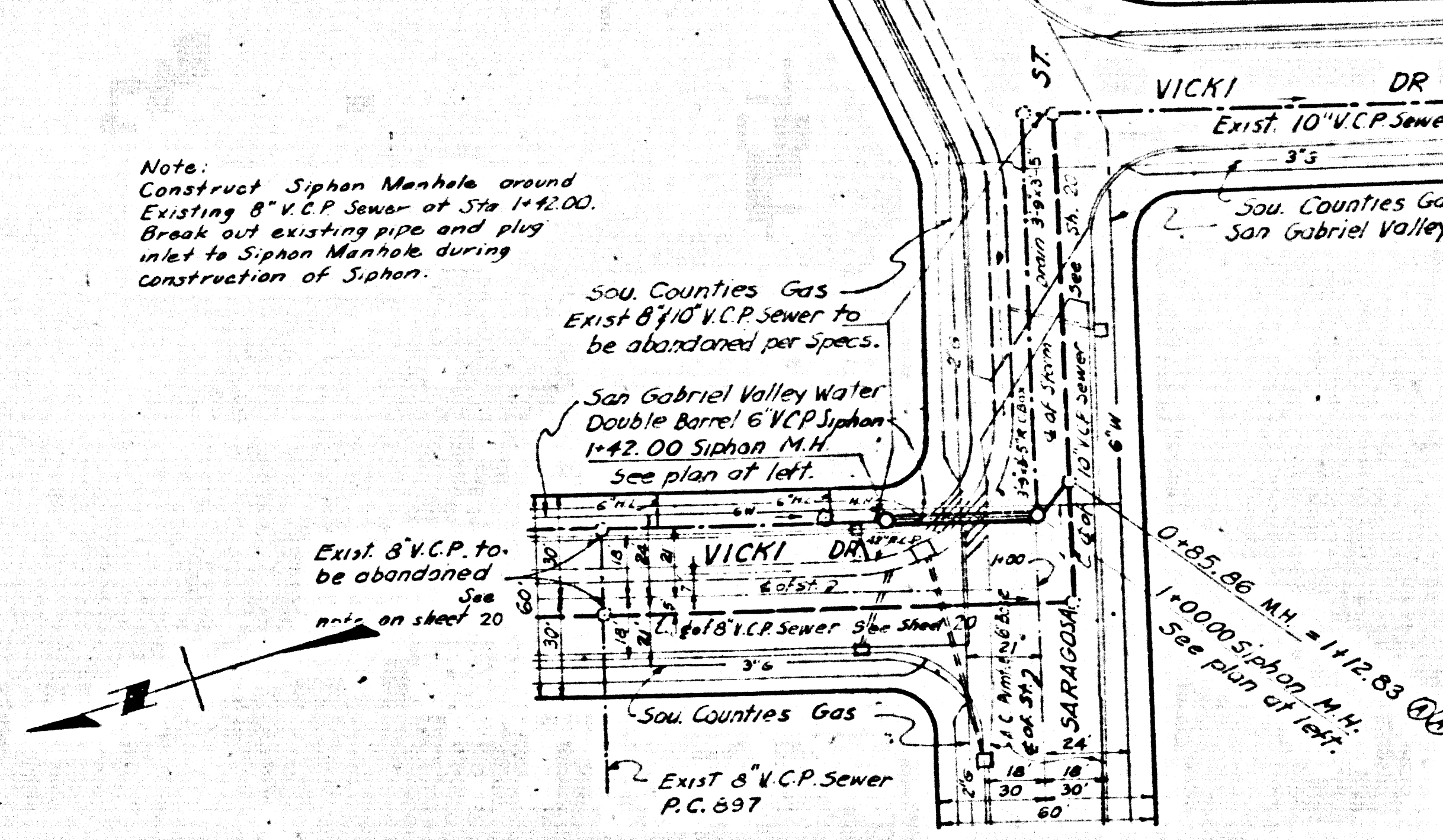
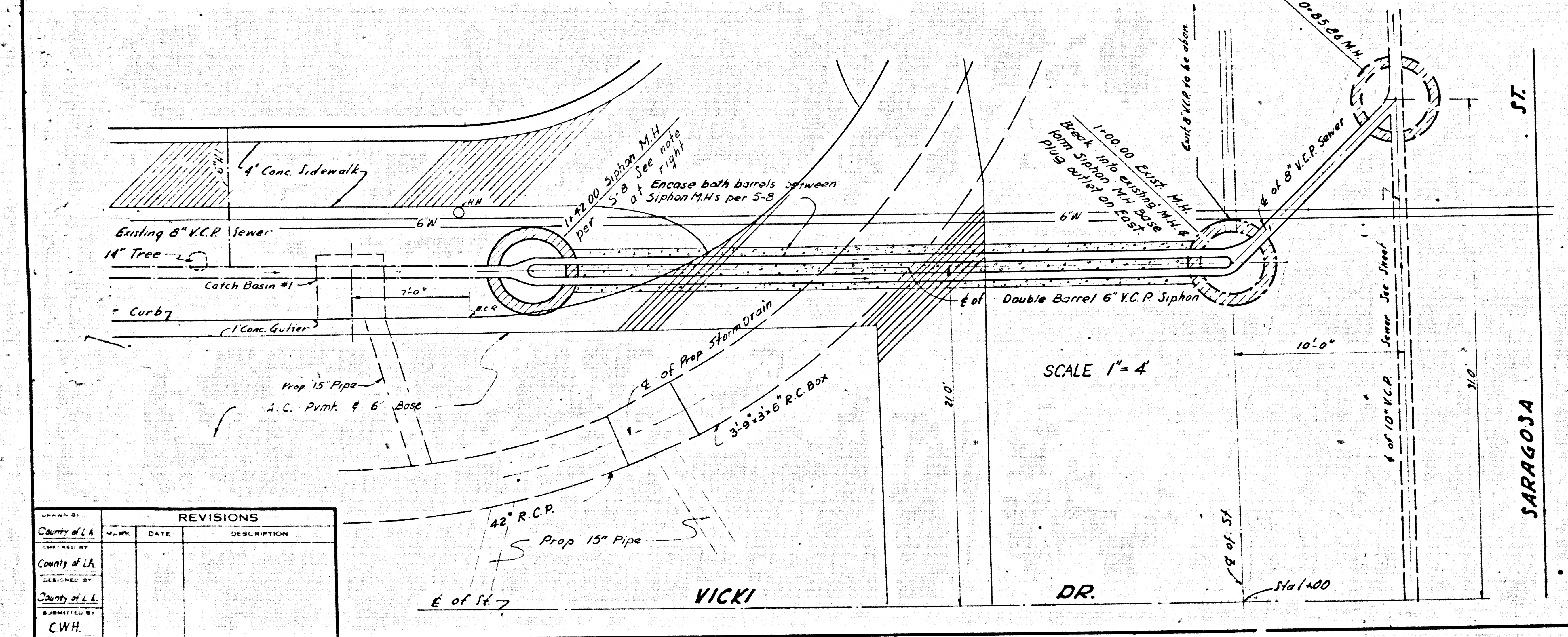
DWG. NO. 364-1214-D4.2
SHEET 20 OF 22

40392



- GENERAL NOTES**
1. For legend see standard plan S-1.
 2. Use extra strength vitrified clay pipe.
 3. Use mechanical compression joints for all vitrified clay pipe sewers per section 36.48 & 49 of Standard Sewer Specifications.
 4. All structures shall be brick sewer structures as per standard plan S-3, except where noted.
 5. Use standard manhole frame & covers per standard plan S-15.
 6. All manhole frame & covers removed are to be reused on this project.
 7. Use formula No. 2 Section 54 of Standard Sewer Specifications to compute allowable leakage & flow to be maintained at all times.
 8. Resurface trenches within paved area of streets as noted on storm drain plans.
 9. Abandonment of main line sewers shall be done in accordance with Section 60 of the Standard Sewer Specifications.
 10. Sanitary sewers shall be constructed according to Standard Specifications for the Construction of Sanitary Sewers as revised dated May 25, 1963, on file in the office of the County Engineer. And shall be prosecuted only in the presence of the County Engineer.

NO CONNECTIONS FOR THE RE-USE OF INDUSTRIAL WASTES SHALL BE MADE TO SEWERS SHOWN ON THESE DRAWINGS WITHOUT WRITTEN PERMISSION FROM THE CHIEF ENGINEER AND GENERAL MANAGER OF THE COUNTY SANITATION DEPARTMENT.



REVISIONS			
NO.	DATE	DESCRIPTION	BY

PREPARED BY
JOHN A. LAMBIE
COUNTY ENGINEER
P.C. 7683

APPROVED:
JOHN D. PARKHURST
CHIEF ENGINEER
CO. SAN. DIST. NO. 18
BY *[Signature]*
OFFICE ENGINEER

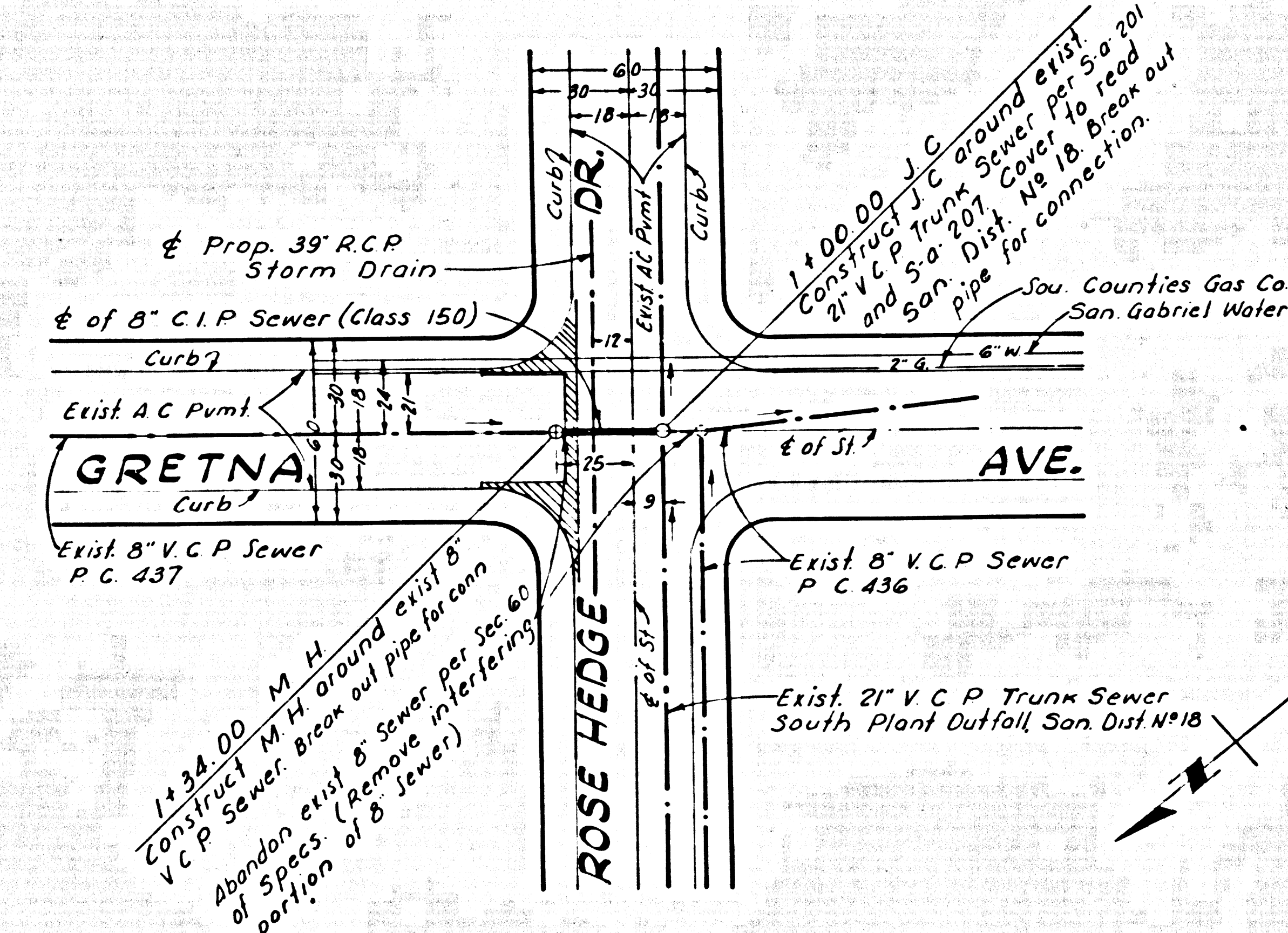
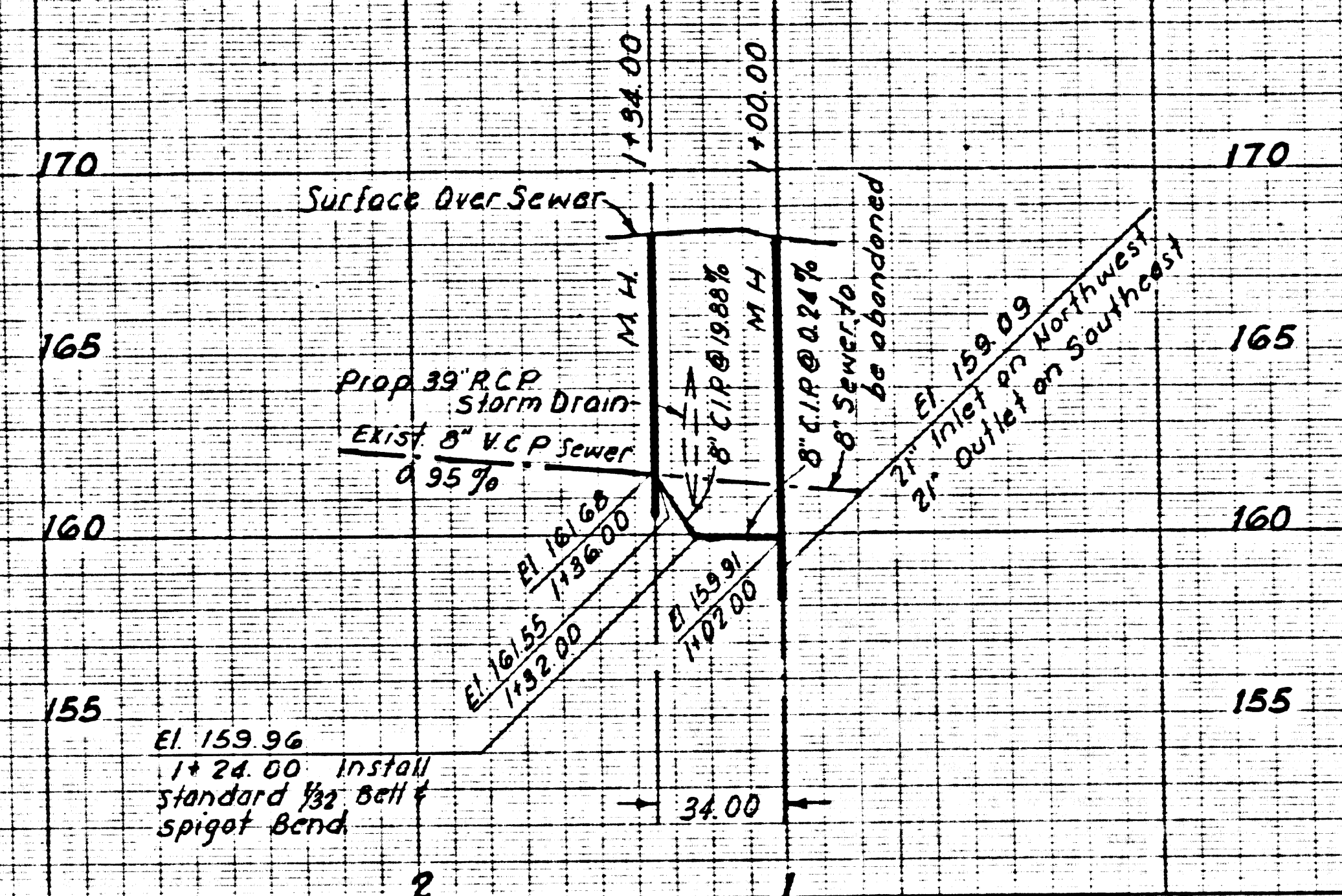
1964 STORM DRAIN BOND ISS-1E
LOS ANGELES COUNTY
FLOOD CONTROL DISTRICT
COUNTY
PROJECT NO. 1214
SANITARY SEWER RECONSTRUCTION
PLAN AND PROFILE

RECOMMENDED BY <i>[Signature]</i> DISTRICT SANITATION ENGINEER	APPROVAL RECOMMENDED BY <i>[Signature]</i> CHIEF ENGINEER
SCALE AS SHOWN	DATE NOV. '67
DWG. NO. 364-1214 D4.21	SHEET 21 OF 27

40393

SCALE
HORIZ: 1"=40'
VERT: 1"=4'

B.M. 1570 El. 167.978, F.A. 2590-25
GRETHA AVE AND ROSE HEDGE DR.
BT JPK IN CB SAN. COR. 25 H. W. N. CR.



NOTE
 1 Use lead joints for all cast iron pipe.
 2 For additional notes see Sheet 21

County Sanitation Districts shall be notified prior to the following so that required inspection can be made (Phone: 337-1025)
 (1) Commencement of construction of manhole on District trunk sewer.
 (2) Breaking into existing manhole on District trunk sewer.
 (3) Core drilling District trunk sewer.
 (4) Construction of house connections to District trunk sewer.
 (5) Acceptance of the project.

NO CONNECTIONS FOR THE DISPOSAL OF INDUSTRIAL WASTES SHALL BE MADE TO SEWERS SHOWN ON THESE DRAWINGS WITHOUT WRITTEN PERMISSION FROM THE CHIEF ENGINEER AND GENERAL MANAGER OF THE COUNTY SANITATION DISTRICTS

1964 STORM DRAIN BOND ISSUE

LOS ANGELES COUNTY
FLOOD CONTROL DISTRICT

COUNTY
PROJECT NO. 1214

SANITARY SEWER RECONSTRUCTION
PLAN AND PROFILE

PREPARED BY
JOHN A. LAMBIE
COUNTY ENGINEER

RECOMMENDED BY
P. C. 7683 3 of 3
Richard M. Com
ASS. SANITATION DISTRICT ENGINEER

APPROVED
JOHN D. PARKHURST
CHIEF ENGINEER
CO. SANITATION DIST. NO. 18
BY: *[Signature]*
OFFICE ENGINEER

DRAWN BY: *[Signature]* DESIGNED BY: *[Signature]*
TRACED BY: *[Signature]* DATE: 4-2-68
CHECKED BY: *[Signature]* DATE: 4-2-68

RECOMMENDED BY: *[Signature]* APPROVAL RECOMMENDED BY: *[Signature]*
DIVISION ENGINEER IN CHARGE: *[Signature]* ASST. CHIEF DEPUTY ENGINEER: *[Signature]*
APPROVED BY: *[Signature]* CHIEF ENGINEER

SCALE: HORIZ. 1"=40' VERT. 1"=4'
DATE: 4-2-68
DWG. NO.: SHEET 22A OF

REVISIONS			
MARK	DATE	DESCRIPTION	