

B.M. SL 1663 ELEV. 1376.340
 C.S. 30 CAP W. END CONC. HDWL.
 LOC. 30 FT. S+55 FT. W. FROM E.
 INT. SOLEDAD CN RD & SAND CN.
 RD. W.C.D. (B.M. 202-10 1962)
 NEWHALL QUAD. 1938

FOR THE NEWHALL COUNTY WATER DISTRICT

APPROVED BY: *T.V. Tallon* Date: 1/30/66
 T.V. TALLON P.E. M.E. 2204
 CHIEF ENGINEER AND GENERAL MANAGER

NEWHALL COUNTY WATER DIST.

NEWHALL BLDG. DIST. NO. 82

PROFILE ALIGNMENT AND GRADE OF
 SANITARY SEWERS PAGE 1
 CONSTRUCTED IN
 TRACT NO. 24613

PRIVATE CONTRACT NO. 7684

W.S. 62
 4 SHEETS, 7 PAGES

SCALE: VERT. 1"=4'
 HORIZ. 1"=40'

JUNE 9, 1966

PREPARED IN THE OFFICES OF
 ENGINEERING SERVICE CORPORATION

BY: *J.R. Menville*
 REG. C. E. NO. 13083

FOR LEGEND SEE PLAN NO. S-1

NOTE: GRADES TO WHICH THIS IMPROVEMENT IS TO BE CONSTRUCTED ARE SHOWN ON PLANS AND PROFILES. GRADE POINTS FOR TOP OF CURBS, CENTER LINE OF STREETS, OR CENTER LINE OF ALLEYS ARE SHOWN BY CIRCLES ON PROFILES. AT ALL POINTS BETWEEN DESIGNATED POINTS THE GRADE SHALL BE ESTABLISHED SO AS TO CONFORM TO A STRAIGHT LINE DRAWN BETWEEN SAID DESIGNATED POINTS. ELEVATIONS ARE IN FEET ABOVE U.S.C. & G.S. MEAN LEVEL DATUM OF 1929. THIS DRAWING AND THE WORK HEREON ARE HEREBY MADE A PART OF THE SPECIFICATIONS. BEFORE WORK CAN BE STARTED THE CONTRACTOR MUST OBTAIN A PERMIT TO EXCAVATE IN COUNTY STREETS FROM THE L.A. COUNTY ROAD DEPT., DISTRICT OFFICE NO. 2, AND PAY A FEE TO THE COUNTY ENGINEER, ROOM 303, COUNTY ENGINEERING BUILDING, 104 WEST SECOND STREET OR "MATELOPE VALLEY" REGIONAL OFFICE, SUFFICIENT TO COVER THE COST OF CONSTRUCTION INSPECTION AND RECORD PLANS. APPROVAL OF THIS PLAN BY THE COUNTY OF LOS ANGELES DOES NOT CONSTITUTE A REPRESENTATION AS TO THE ACCURACY OF THE LOCATION OF OR THE EXISTENCE OR NON-EXISTENCE OF ANY UNDERGROUND UTILITY PIPE OR STRUCTURE WITHIN THE LIMITS OF THIS PROJECT. THIS NOTE APPLIES TO ALL PAGES. IF WORK IS TO BE DONE IN A STATE HIGHWAY, A PERMIT MUST BE OBTAINED FROM THE STATE OF CALIFORNIA, DIVISION OF HIGHWAYS, 120 SOUTH SPRING STREET, LOS ANGELES, CALIFORNIA.

COUNTY OF LOS ANGELES, CALIFORNIA
 JOHN A. LAMBE, COUNTY ENGINEER J. D. PARKHURST, CHIEF ENGINEER

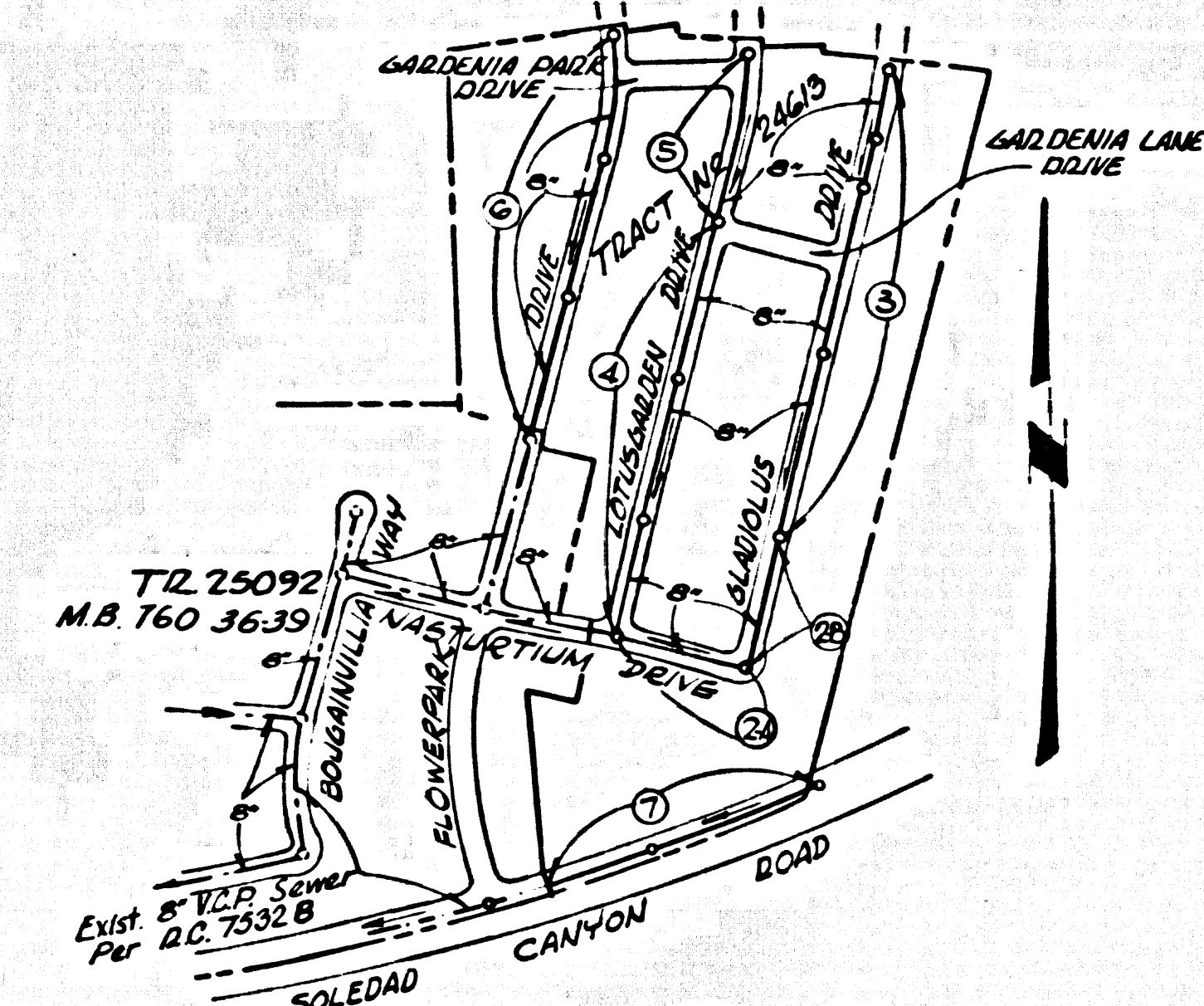
APPROVED BY: *John A. Lamb* SANITATION ENGINEER APPROVED BY: *J.D. Parkhurst* OFFICE ENGINEER

CHECKED BY: *Ralph Schaper* 12/19/66
 REG. C. E. NO. 13026

J.N. 0367.79

PRIVATE ENGINEER'S
 NOTICE TO CONTRACTOR

THE EXISTENCE AND LOCATION OF ANY UNDERGROUND UTILITY PIPES AND STRUCTURES SHOWN ON THESE PLANS ARE OBTAINED BY A SEARCH OF THE AVAILABLE RECORDS TO THE BEST OF OUR KNOWLEDGE. THERE ARE NO EXISTING UTILITIES EXCEPT AS SHOWN ON THIS MAP. THE CONTRACTOR IS REQUESTED TO TAKE PRECAUTIONARY MEASURES TO PROTECT THE UTILITY LINES FROM ANY OTHER LINES NOT SHOWN OR NOT SHOWN ON THE DRAWING.



ISSUE NO HOUSE CONNECTION PERMITS UNTIL OUTLET SEWERS ARE AVAILABLE TO SERVE THIS TRACT. CALL SANITATION DIVISION.

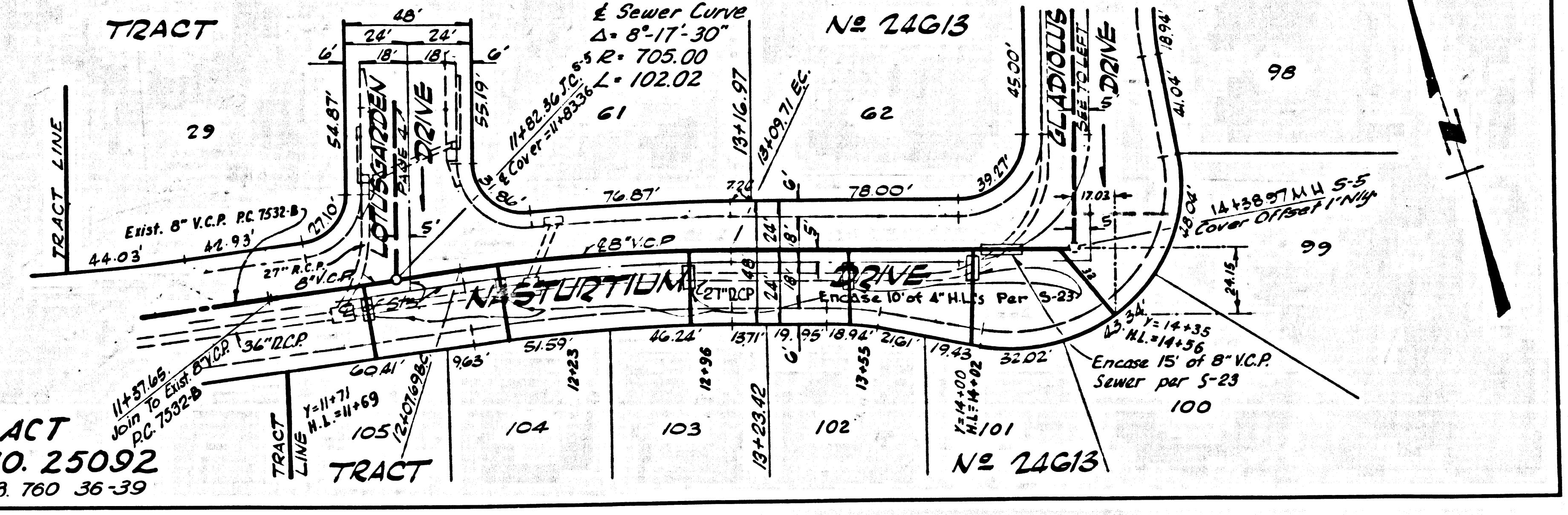
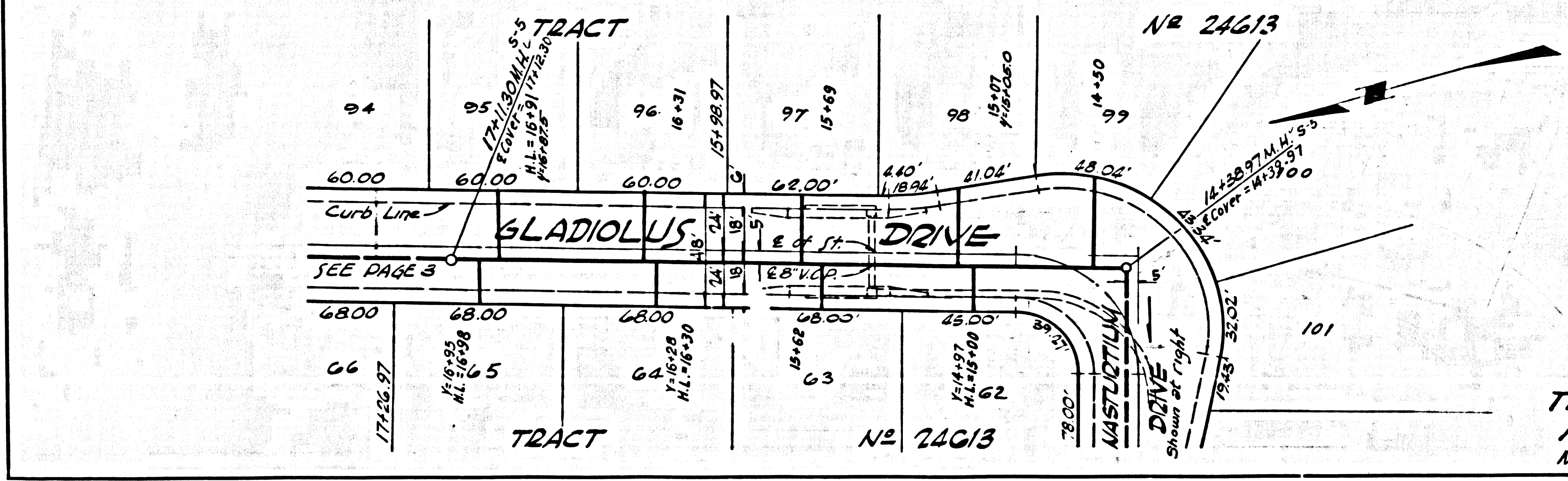
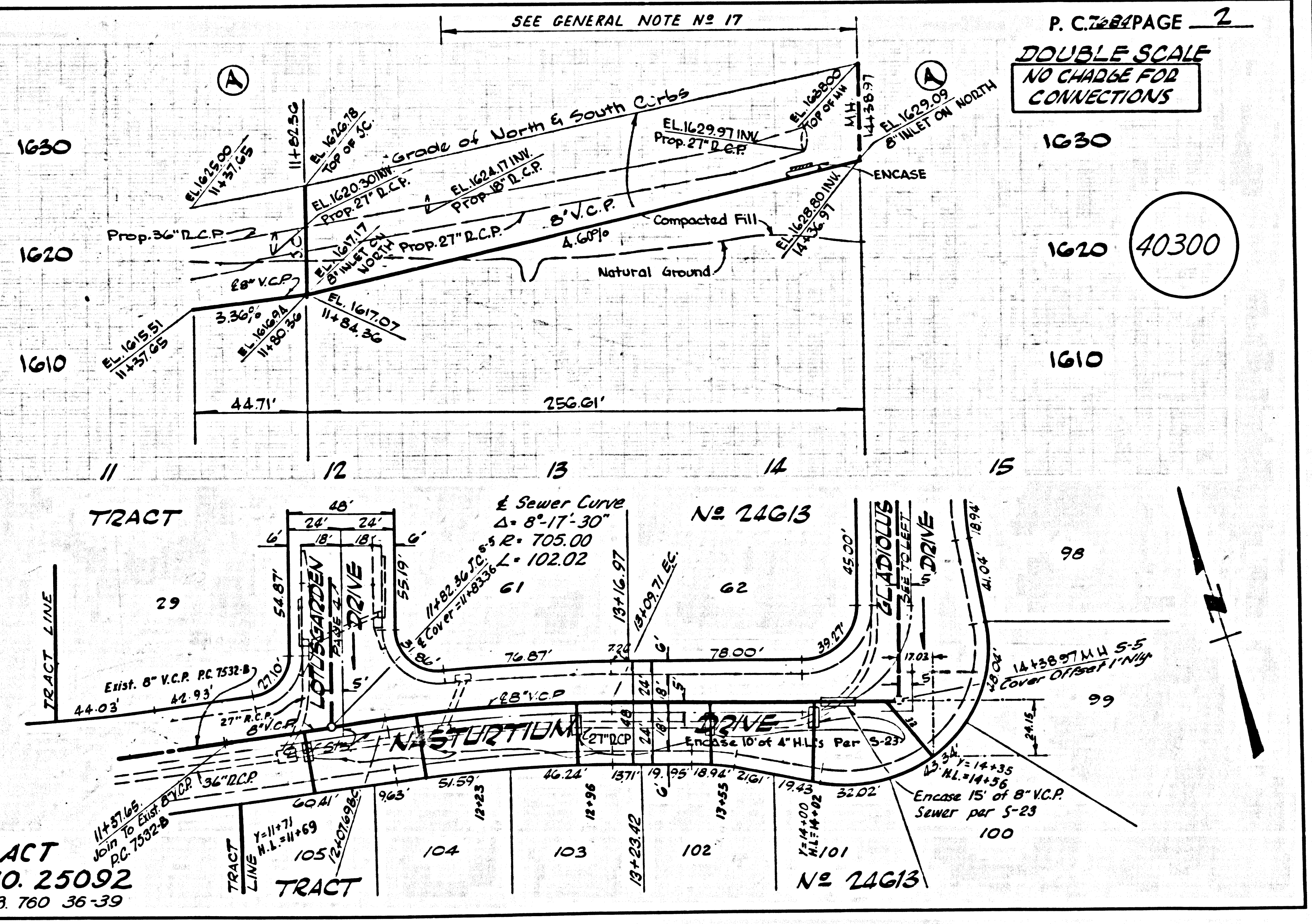
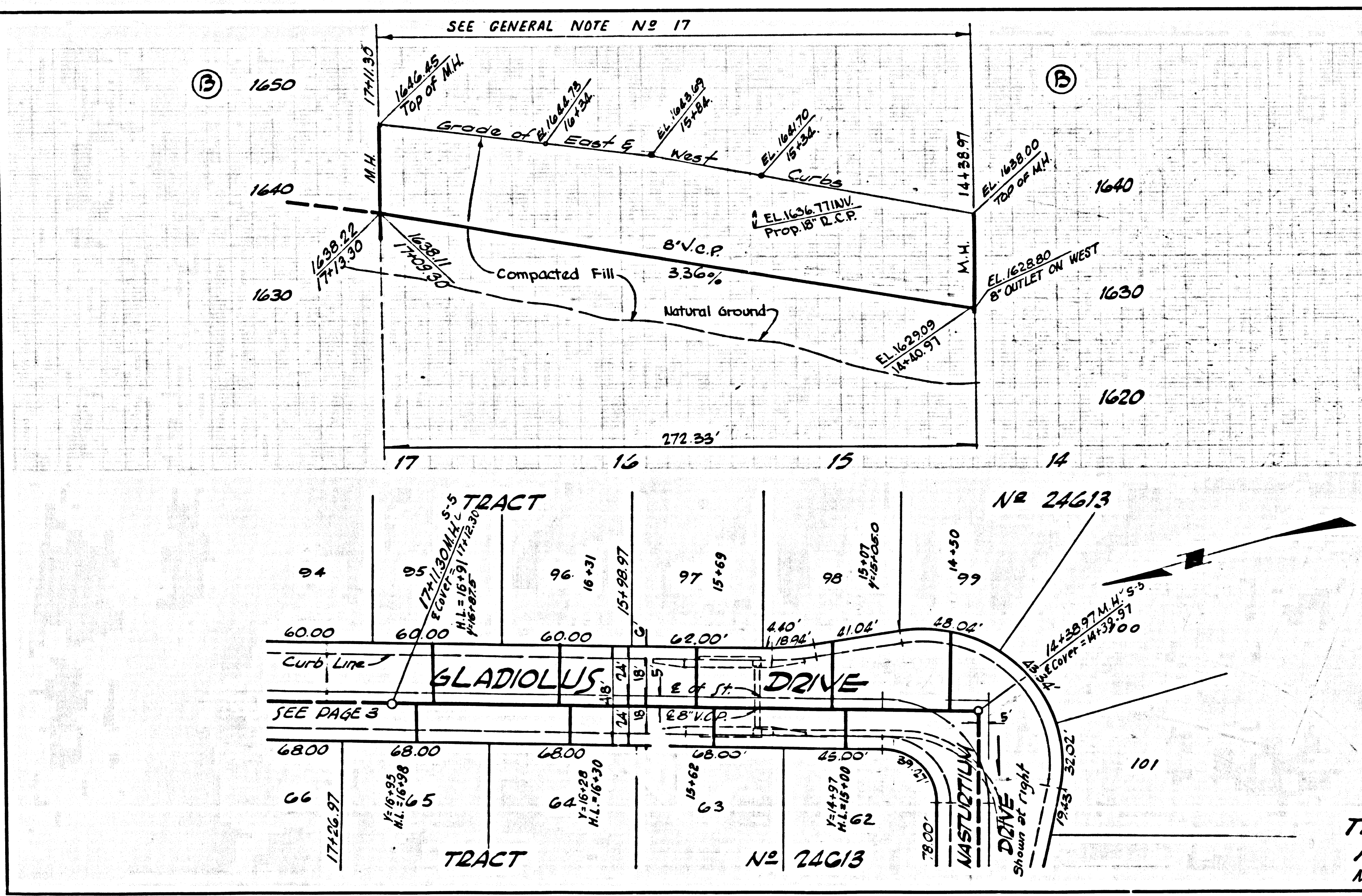
Revisions:
 Page 4; Main Line Station & Grade from 1618.00 Drive to 2nd M.H. (Sta. 14+45.12)
Ralph Schaper 1/23/67
 APPROVED: _____ Date: _____

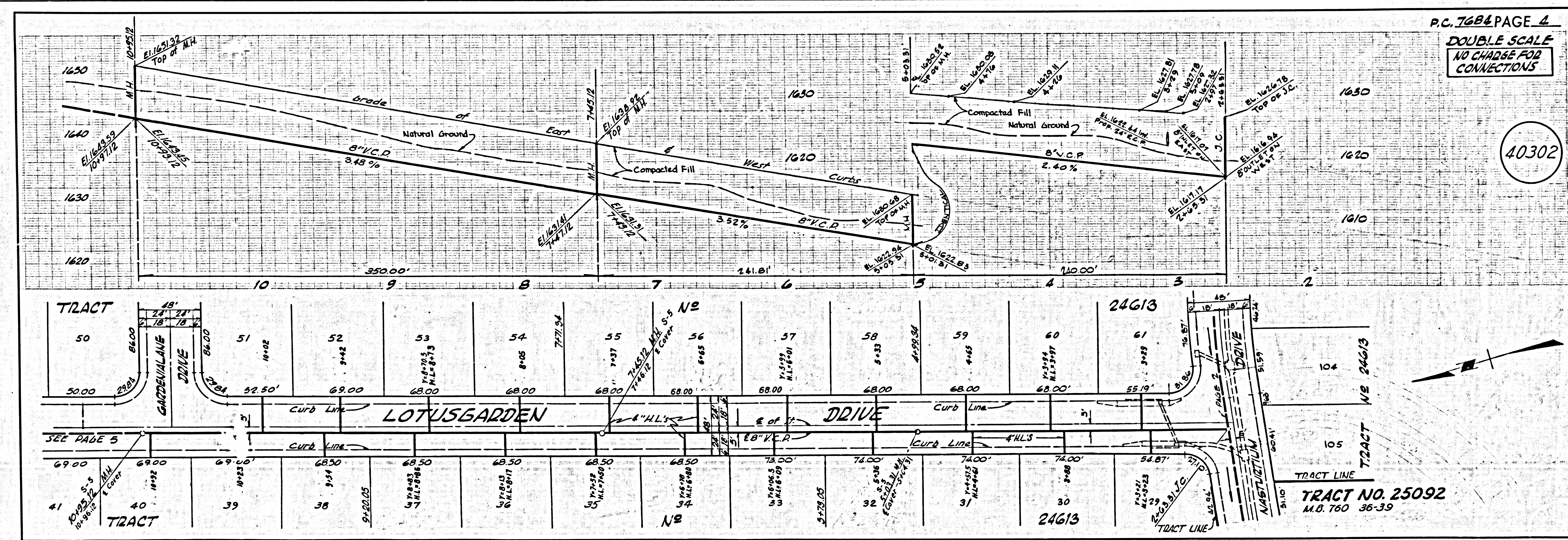
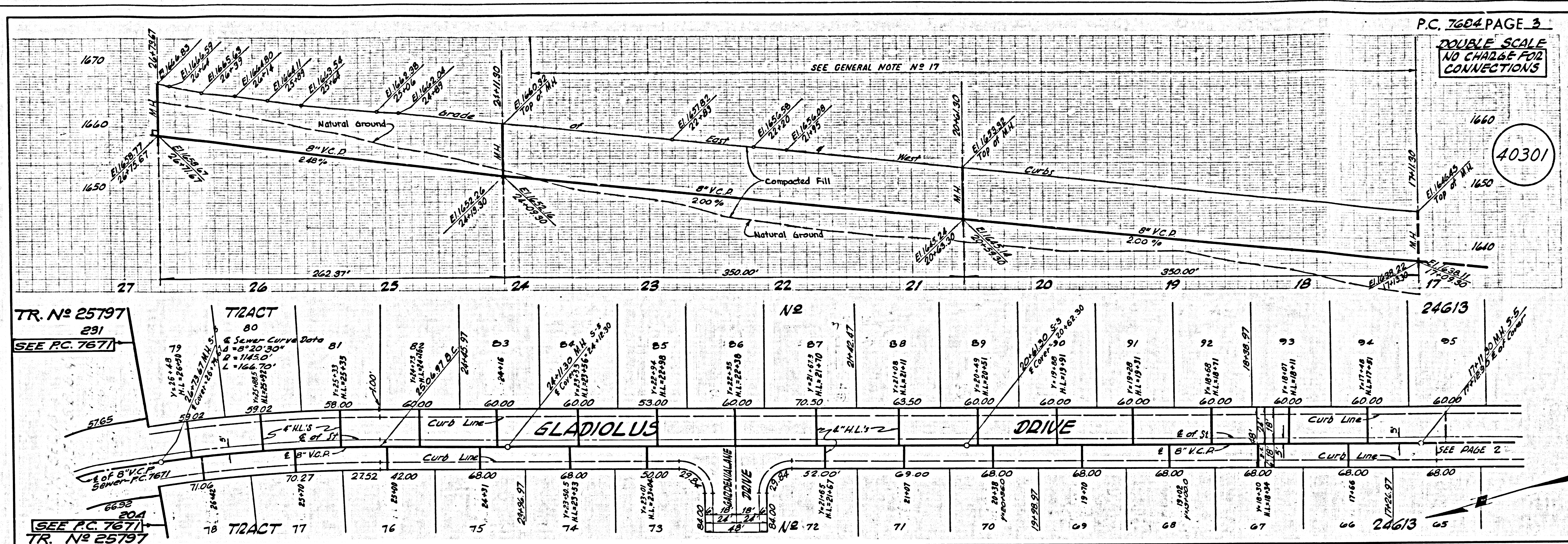
Revisions:
 Page 5; Main line Sta. 14+47.17 to Sta. 14+84.98, grade changed from 3.52% to 4.52%
Ralph Schaper 1/22/67
 APPROVED: _____ Date: _____

- NOTES:
1. PROVIDE STAKES ON THE PROPERTY LINE OR PROPERTY LINES PRODUCED AT RIGHT ANGLES TO THE SEWER LINE AT THE CENTER LINE OF EACH MANHOLE.
 2. NO REPRESENTATIVE OF THE COUNTY ENGINEER WILL SURVEY OR LAY OUT ANY PORTION OF THE WORK.
 3. THE PRIVATE ENGINEER SHALL FURNISH THE COUNTY ENGINEER WITH GRADE SHEETS AND STATIONING FOR ALL HOUSE LATERALS AND 7 MANHOLES AND SHALL PROVIDE STAKES FOR THEM AT THEIR PROPER LOCATIONS WITH STATIONING CLEARLY MARKED. ALL HOUSE LATERALS SHALL BE CONSTRUCTED IN A STRAIGHT ALIGNMENT AT RIGHT ANGLES FROM THE MAIN LINE SEWER EXCEPT AS SHOWN ON THE PLANS. HOUSE LATERALS FROM CHIMNEYS SHALL NOT HAVE AN ANGLE OF LESS THAN 45° WITH THE MAIN LINE SEWER. ANY CHANGE IN ALIGNMENT SHALL BE REQUESTED IN WRITING BY THE PRIVATE ENGINEER.
 4. THE PRIVATE ENGINEER SHALL FURNISH THE HOUSE LATERAL DEPTH AT THE PROPERTY LINE BELOW THE TOP OF CURB ELEVATION FOR EACH HOUSE LATERAL ON THE GRADE SHEET.
 5. NO REVISIONS SHALL BE MADE IN THESE PLANS WITHOUT THE APPROVAL OF THE COUNTY ENGINEER.
 6. THE CONTRACTOR SHALL NOTIFY THE CONSTRUCTION DIVISION BY TELEPHONE, MADISON 9-4747, EXT. 5158, AT LEAST TWENTY-FOUR HOURS BEFORE STARTING ANY WORK UNDER THIS CONTRACT.
 7. MANHOLES SHALL BE BRICK SEWER STRUCTURES PER S-2 PRECAST CONCRETE MANHOLES PER S-5 OR S-6 MAY BE USED AS AN ALTERNATE IN LOCATIONS APPROVED BY THE COUNTY ENGINEER.
 8. USE STANDARD MANHOLE FRAMES AND COVERS, S-14, EXCEPT AS NOTED.
 9. MANHOLE TOPS IN UNIMPROVED RIGHTS-OF-WAY TO BE SIX INCHES ABOVE FINISHED GRADE.
 10. USE EXTRA STRENGTH PIPE. ALL PIPE IS STANDARD DEPTH EXCEPT AS NOTED.
 11. USE _____ MECHANICAL COMPRESSION JOINTS FOR ALL V.C.P. JOINTS PER SPEC.
 12. IF A POWER POLE IS WITHIN THREE FEET OF THE SEWER, THE SEWER SHALL BE ENCASED, PER S-23 TWO FEET ON EITHER SIDE FROM THE POINT OF INTERFERENCE.
 13. IF DURING THE COURSE OF CONSTRUCTION IT IS DETERMINED THAT THERE IS LESS THAN FOUR FEET OF COVER OVER THE TOP OF A MAIN LINE OR HOUSE LATERAL V.C.P. SEWER WHICH IS NOT INDICATED ON THE PLANS, THE PIPE SHALL BE ENCASED PER S-23 UNLESS OTHERWISE APPROVED BY THE COUNTY ENGINEER.
 14. HOUSE LATERALS TO BE CONSTRUCTED WITH INVERTS AT PROPERTY LINE, _____ FEET BELOW CURB GRADE EXCEPT AS NOTED.
 15. RESURFACE ALL FINISHES WITHIN PAVED AREAS TO MEET L.A. COUNTY ROAD DEPT. OR CALIFORNIA STATE HIGHWAY REQUIREMENTS IN ACCORDANCE WITH PERMITS.
 16. FOR ALLOWANCE WAREHOUSE TEST USE FORMULA NO. _____ SPEC. SEC. 54.
 17. CONSTRUCTION IN FILLED AREAS
 (A) AN ACCEPTABLE CERTIFICATION OF COMPACTION TESTS RESULTS SHALL BE SUBMITTED TO THE CONSTRUCTION DIVISION. COMPACTION TESTS ARE TO BE MADE IN ACCORDANCE WITH A.S.T.M. STANDARD METHOD OF TEST D495.
 (B) NO CONSTRUCTION IS PERMITTED IN FILLED AREAS WHERE THE RELATIVE DENSITY OF COMPACTION IS LESS THAN 80%.
 (C) IF THE RELATIVE DENSITY OF COMPACTION IS LESS THAN 80%, ALL MAINLINE AND HOUSE LATERALS SHALL BE ENCASED PER S-23 OR HAVE SPECIAL BASE COURSE PER S-23 CASE DE. SPECIAL MANHOLE BASE PER S-14 IS REQUIRED.
 (D) IF THE RELATIVE DENSITY OF COMPACTION IS 90% OR GREATER, THE SPECIAL PROVISIONS IN (C) ARE NOT REQUIRED.
 18. ALL STATE & LOCAL TRAFFIC SAFETY ORDERS WILL BE RIGIDLY ENFORCED.

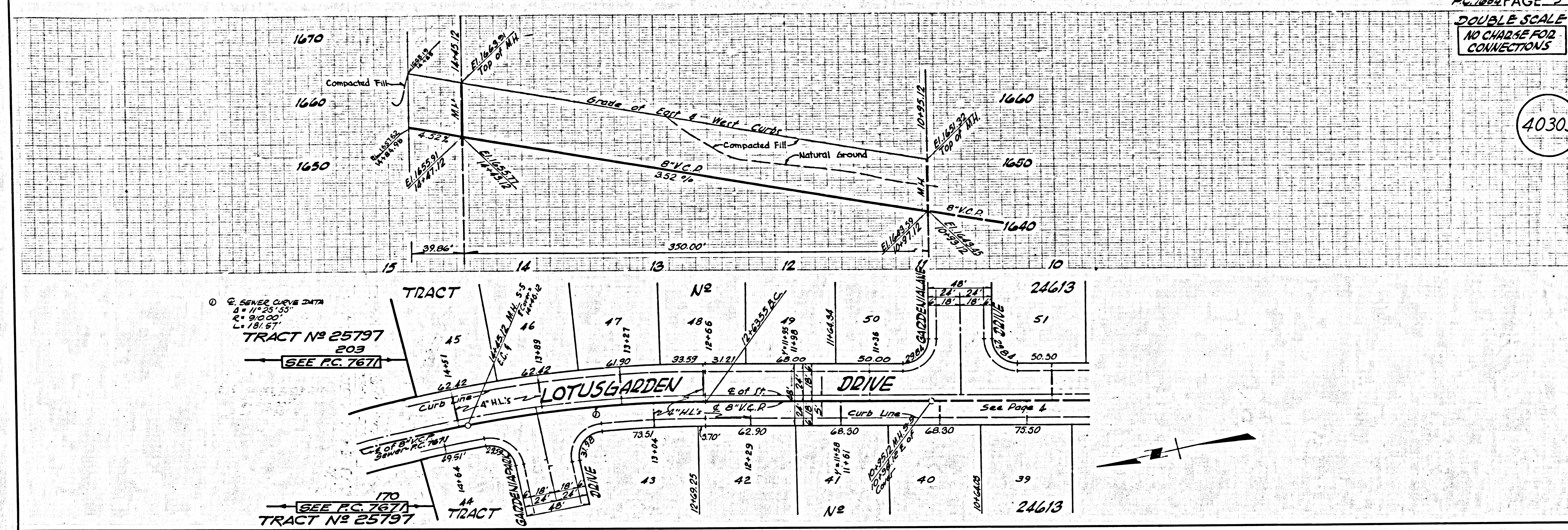
COLLECT CHARGES AS INDICATED
Ralph Schaper

NO CONNECTIONS FOR THE DISPOSAL OF INDUSTRIAL WASTES SHALL BE MADE TO SEWERS SHOWN ON THESE DRAWINGS WITHOUT WRITTEN PERMISSION FROM THE CHIEF ENGINEER AND GENERAL MANAGER OF THE COUNTY SANITATION DISTRICTS.

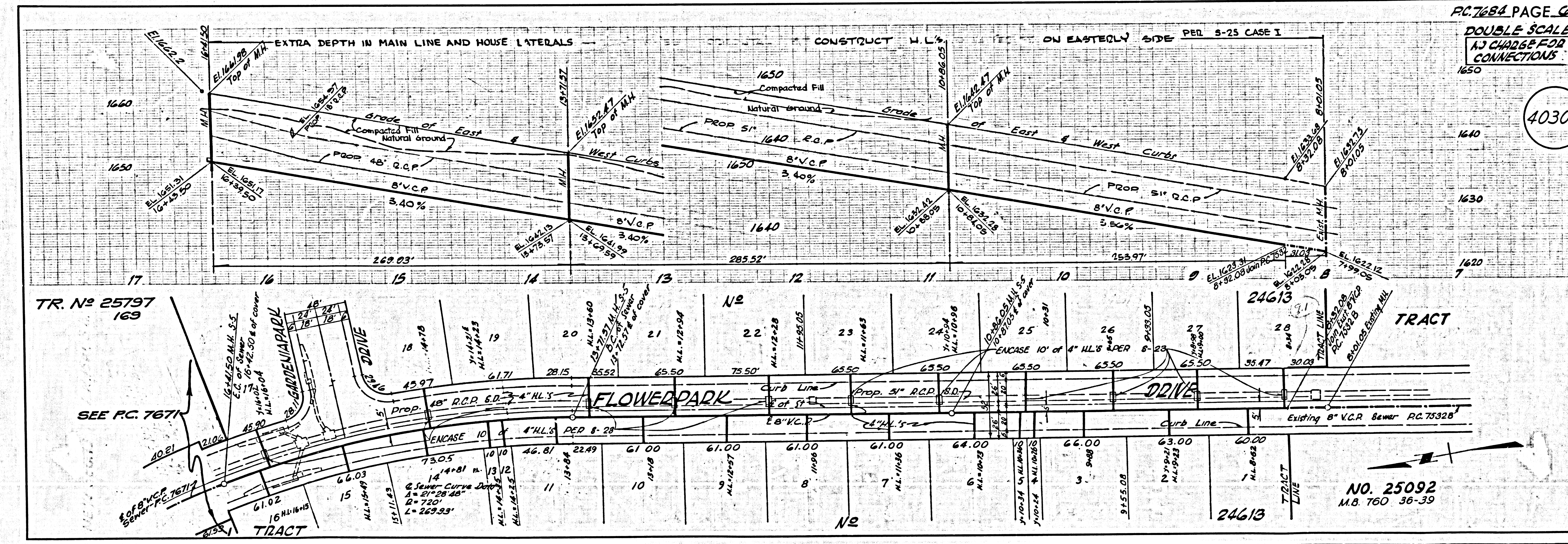




40303

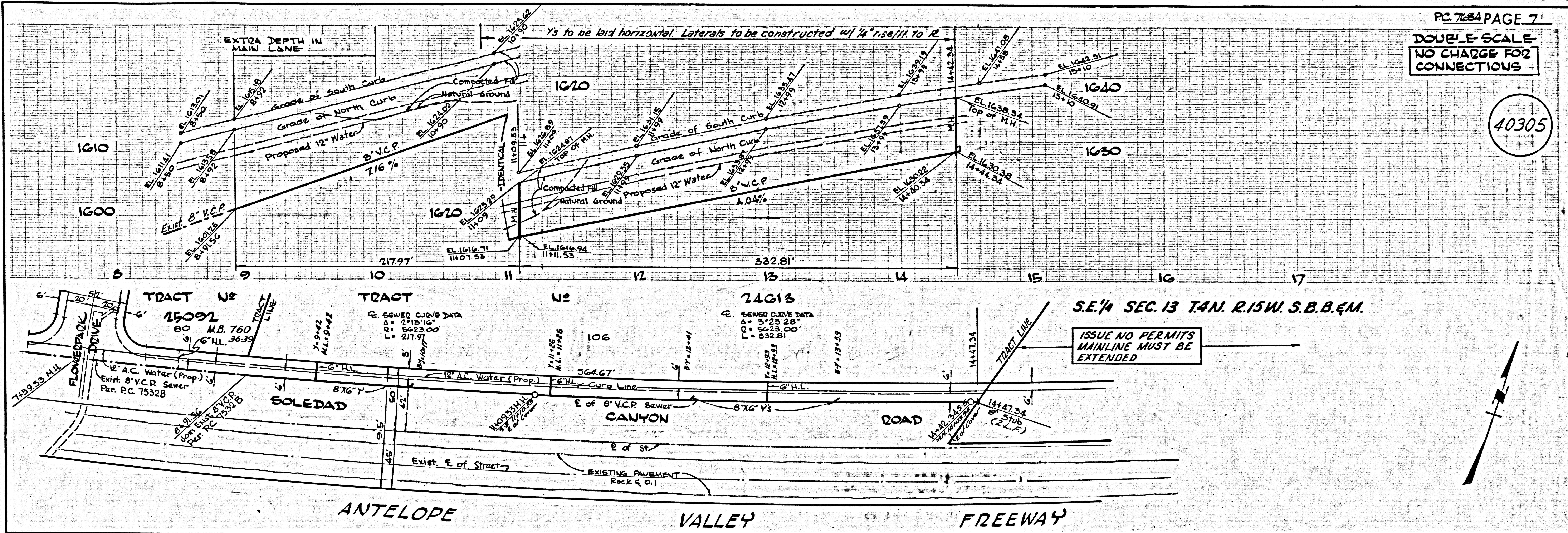


40304



DOUBLE SCALE
NO CHARGE FOR
CONNECTIONS

40305



U.S.G. 196 L.A. COUNTY OFFICE SHEET NO. 3 ENGINEERS SERVICE CO.