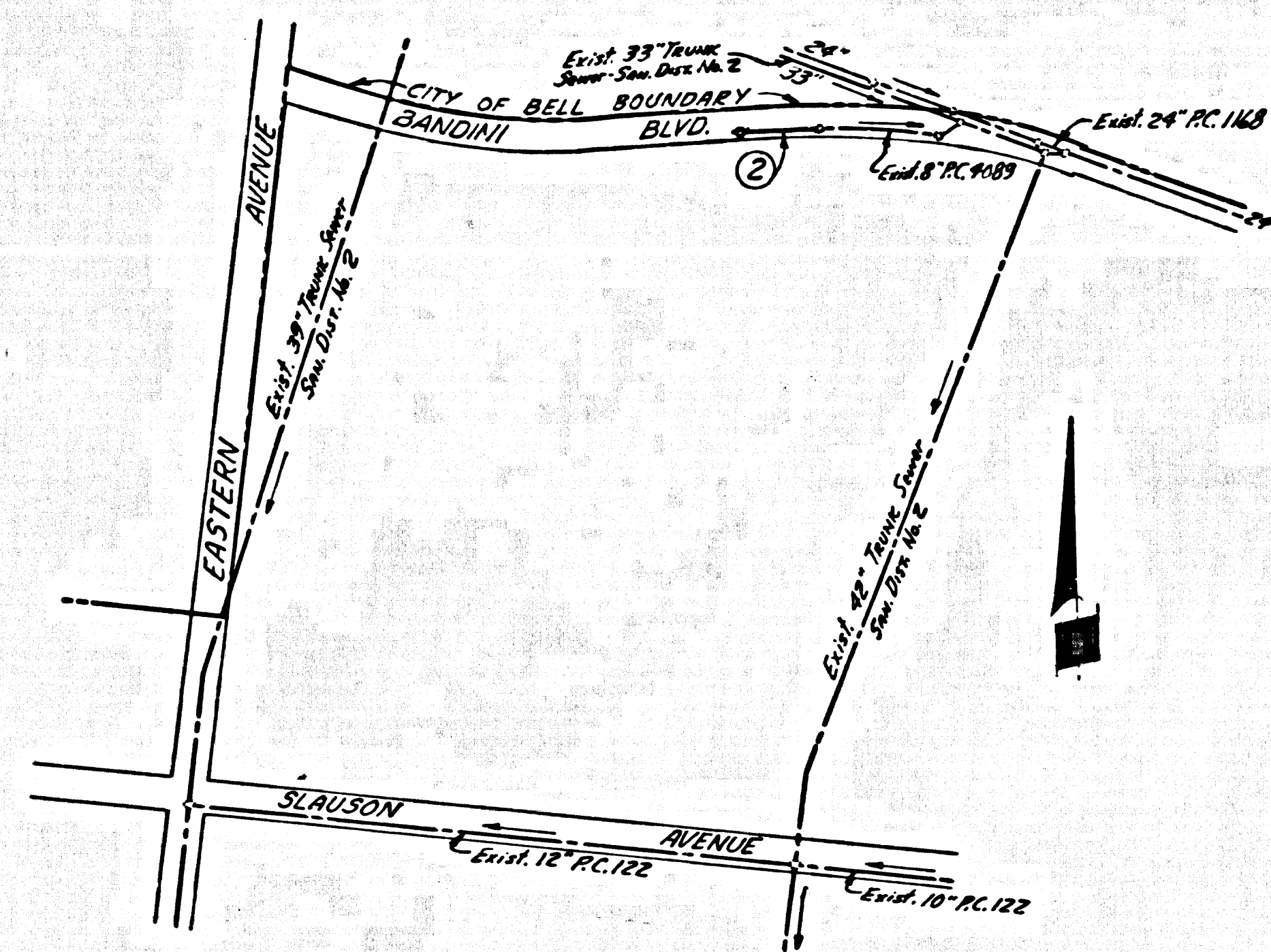


B.M. BY 3217 ELEV. 137.648  
 L. & Bench Nail S.E. cor. conc. catch basin - E  
 ent. to Cheli Air Force on Eastern Ave. 60' W.  
 of E and 800 S. of S.F.R.R.  
 RIVERA QUAD. 19 65 adj.



INDEX MAP  
 SCALE: 1"=500'  
 P.C. 7689  
 BANDINI BLVD.

CITY OF COMMERCE BLDG. DIST. NO. 6.01

- NOTES:
1. PROVIDE STAKES ON THE PROPERTY LINE OR PROPERTY LINES PRODUCED AT RIGHT ANGLES TO THE SEWER LINE AT THE CENTER LINE OF EACH MANHOLE.
  2. NO REPRESENTATIVE OF THE CITY ENGINEER WILL SURVEY OR LAY OUT ANY PORTION OF THE WORK.
  3. THE PRIVATE ENGINEER SHALL FURNISH THE CITY ENGINEER WITH GRAB SHEETS AND STATIONING FOR 4-2 HOUSE LATERALS AND V BRANCHES AND SHALL PROVIDE STREET FOR THEM AT THEIR PROPER LOCATIONS WITH SUFFICIENT PLANNED MANHOLES. ALL HOUSE LATERALS SHALL BE CONSTRUCTED BY A STRAIGHT ALIGNMENT BY THEIR OWNERS WITH THE MANHOLES SPACED AS SHOWN ON THE PLANS. HOUSE LATERALS SHALL NOT HAVE AN ANGLE OF LESS THAN 45° WITH THE MAIN LINE SEWER. ANY CHANGE IN ALIGNMENT SHALL BE REQUESTED IN WRITING BY THE PRIVATE ENGINEER.
  4. THE PRIVATE ENGINEER SHALL FURNISH THE HOUSE LATERAL DEPTH AT THE PROPERTY LINE BELOW THE TOP OF CURB ELEVATION FOR EACH HOUSE LATERAL ON THE GRADE SHEET.
  5. NO REVISIONS SHALL BE MADE IN THESE PLANS WITHOUT THE APPROVAL OF THE CITY ENGINEER.
  6. USE STANDARD MANHOLE FRAMES AND COVERS, S-15.
  7. USE EXTRA STRENGTH PIPE, ALL PIPE IS STANDARD DEPTH EXCEPT AS NOTED.
  8. USE MECHANICAL COMPRESSION JOINTS FOR ALL T.C.P. JOINTS PER SPEC'S, SECS. 34 & 48, & 49.
  9. RESURFACE ALL TRENCHES WITHIN PAVED AREAS TO MEET L.A. COUNTY ROAD DEPT. OR CALIFORNIA STATE HIGHWAY REQUIREMENTS IN ACCORDANCE WITH PERMITS.
  10. ALL STRIKE AND LOCAL TRENCH SAFETY WARNINGS SHALL BE ENGINTEER ENFORCED.
  11. HOUSE LATERALS TO BE CONSTRUCTED WITH WITHINS AT PROPERTY LINE, & BELOW PROPERTY LINE.
  12. MANHOLES SHALL BE BUILT TO MEET SPECIFICATIONS PER S.S. PRECAST CONCRETE MANHOLES PER S-S OR S-6 ANY BE USED AS AN ALTERNATE IN LOCATIONS APPROVED BY THE CITY ENGINEER.
  13. FOR ALLOWABLE LEAKAGE TEST USE FORMULA NO. 2, SPEC'S, SEC. 34.
  14. MANHOLE TOPS IN UNIMPROVED RIGHTS-OF-WAY TO BE SIX INCHES ABOVE FINISHED GRADE.
  15. THE CONTRACTOR SHALL NOTIFY THE CONSTRUCTION DIVISION BY TELEPHONE, MADISON 9-0741, EXT. 508 AT LEAST TWENTY-FOUR HOURS BEFORE STARTING ANY WORK UNDER THIS CONTRACT.
  16. IF A POWER POLE IS WITHIN THREE FEET OF THE SEWER, THE SEWER SHALL BE ENCASED, PER S-S, THIS DEPT. AND OTHER SIDE FROM THE POINT OF INTERFERENCE.
  17. IF DURING THE COURSE OF CONSTRUCTION IT IS DETERMINED THAT THERE IS LESS THAN FOUR FEET OF COVER OVER THE TOP OF A MAIN LINE OR HOUSE LATERAL, K.C.P. SEWER WHICH IS NOT INDICATED ON THE PLANS, THE PIPE SHALL BE ENCASED PER S-S UNLESS OTHERWISE APPROVED BY THE CITY ENGINEER.
  18. WHEREVER GROUND WATER IS ENCOUNTERED DURING THE CONSTRUCTION OF THE SEWERS, THE K.C.P. JOINTS SHALL BE OF JOINT COMPOUND PER SPEC'S, SECS. 33 & 48, OR MECHANICAL COMPRESSION JOINTS PER SPEC'S, SEC. 36, 48 & 49.

PROFILE ALIGNMENT AND GRADE OF P.C. 7689  
 SANITARY SEWERS PAGE 1  
 TO BE CONSTRUCTED IN  
 BANDINI BOULEVARD

PRIVATE CONTRACT NO. 7689

W.S. 36 A-4  
 1 SHEETS: 2 PAGES  
 SCALE: VERT. 1"=4' HORIZ. 1"=40'  
 JUNE, 1966  
 PREPARED IN THE OFFICES OF  
 G.A. MOLINA  
 engineering consultants  
 REG. C. E. NO. 14004

38557

NOTE:  
 GRADES TO WHICH THIS IMPROVEMENT IS TO BE CONSTRUCTED ARE SHOWN ON PLANS AND PROFILES. GRADE POINTS FOR TOP OF CURBS, CENTER LINE OF STREETS OR CENTER LINE OF ALLEYS ARE SHOWN BY CIRCLES ON PROFILES. AT ALL POINTS BETWEEN DESIGNATED POINTS THE GRADE SHALL BE ESTABLISHED SO AS TO CONFORM TO A STRAIGHT LINE DRAWN BETWEEN SAID DESIGNATED POINTS.  
 ELEVATIONS ARE IN FEET ABOVE U.S.C. & G.S. SEA LEVEL DATUM OF 1929.  
 THIS DRAWING AND THE DATA HEREON ARE HEREBY MADE A PART OF THE SPECIFICATIONS, AS REVISED BY THE CITY ENGINEER AND SHALL BE PRECEDED ONLY BY THE RESOLUTION OF THE CITY ENGINEER.  
 BEFORE WORK CAN BE STARTED, THE CONTRACTOR MUST OBTAIN A PERMIT TO EXCAVATE IN COUNTY STREETS FROM THE L.A. COUNTY ROAD DEPT. GENERAL ORDER NO. 8, AND MAKE A DEPOSIT WITH THE CITY OF COMMERCE, 2515 COMMERCE WITH LOS ANGELES, CALIFORNIA, SUFFICIENT TO COVER THE COST OF CONSTRUCTION INSPECTION AND RECORD PLANS.  
 APPROVAL OF THIS PLAN BY THE CITY OF COMMERCE DOES NOT CONSTITUTE A REPRESENTATION AS TO THE ACCURACY OF THE LOCATION OR THE EXISTENCE OR NON-EXISTENCE OF ANY UNDERGROUND UTILITY PIPE OR STRUCTURE WITHIN THE LIMITS OF THIS PROJECT. THIS NOTE APPLIES TO ALL PAGES.  
 IF WORK IS TO BE DONE IN A STATE HIGHWAY, A PERMIT MUST BE OBTAINED FROM THE STATE OF CALIFORNIA, DIVISION OF HIGHWAYS, 126 SOUTH SPRING STREET, LOS ANGELES, CALIFORNIA.

CITY OF COMMERCE, CALIFORNIA  
 JOHN A. LAMBIE, CITY ENGINEER J. D. PARKHURST, CHIEF ENGINEER  
 CO. SAN DIST. NO. 2

APPROVED BY: *Richard E. Keller* CHIEF ENGINEER APPROVED BY: *E.P. Bennett* CHIEF ENGINEER  
 SUBMITTED BY: *Robert W. Miller* REGIONAL ENGINEER  
 CHECKED BY: *John A. Lambie* REG. C. E. NO. 7852

COLLECT CHARGES AS INDICATED  
*David Sanchez 7-21-66*

NO CONNECTIONS FOR THE DISPOSAL OF INDUSTRIAL WASTES SHALL BE MADE TO SEWERS SHOWN ON THESE DRAWINGS WITHOUT WRITTEN PERMISSION FROM THE CHIEF ENGINEER AND GENERAL MANAGER OF THE COUNTY SANITATION DISTRICTS.

P.C. 7689 PAGE 2

COLLECT CHARGES AS INDICATED

38558

