

ABBREVIATIONS

E.P. - EDGE OF PAVEMENT
 CONST. - CONSTRUCT
 P.P. - POWER POLE
 CONC. - CONCRETE
 R.R. - ROCK AND OIL
 P.V.T. - PAVEMENT

STANDARD PLANS

THE FOLLOWING LATEST REVISED STANDARD PLANS OF THE LOS ANGELES COUNTY ENGINEER SHALL APPLY IN THE CONSTRUCTION OF THIS PROJECT:

STANDARD LEGEND	S-1
MINIMUM EXCAVATION SAFETY REQUIREMENTS	S-2
STANDARD BRICK SEWER STRUCTURE	S-3
NON-REINFORCED PRECAST CONCRETE MANHOLE	S-4
REINFORCED PRECAST CONCRETE MANHOLE	S-5
RECTANGULAR SHALLOW MANHOLE	S-6
NEW CONNECTION TO EXISTING BRICK MANHOLE	S-7
MANHOLE FRAME AND COVER	S-8
RECTANGULAR MANHOLE FRAME AND COVER	S-9
STANDARD MANHOLE STEP	S-10
BEDDING FOR SEWER PIPE	S-11
SPECIAL SUPPORT AND PROTECTION	S-12
CRADLING AND ENCASEMENT	S-13
WYE SUPPORT	S-14
CHIMNEY PIPE AND BASE	S-15
STOPPER	S-16

THE FOLLOWING LATEST REVISED STANDARD PLANS OF THE COUNTY SANITATION DISTRICTS OF LOS ANGELES COUNTY SHALL APPLY IN THE CONSTRUCTION OF THIS PROJECT:

STANDARD M.H.B.J.C. TYPE "A"	S-A-201
STANDARD M.H.B.J.C. TYPE "D"	S-A-204C OR S-A-204D
STANDARD MANHOLE FRAME AND COVER	S-A-207
STANDARD MANHOLE STEP	S-A-209

DOUBLE SCALE ROLLING HILLS ESTATES BLDG. DIST. NO.12.03

NOTES:

RECONSTRUCT HOUSE LATERALS WITH INVERTS AT PROPERTY LINE 8 FT. BELOW TOP OF C.I. 18 GRADE OR SURFACE OVER SEWER, UNLESS OTHERWISE SHOWN.

RESURFACE TRENCH WITHIN PAVED AREAS IN ACCORDANCE WITH RESURFACING SCHEDULE SHOWN ON PAGE 24.

FRAMES IN CIRCLES AT ENDS OF HOUSE LATERALS INDICATE DEPTH BELOW TOP OF CURB OR SURFACE OVER SEWER.

ALL HOUSE LATERALS SHALL BE CONSTRUCTED IN A STRAIGHT ALIGNMENT AT RIGHT ANGLES FROM THE MAIN LINE SEWER EXCEPT AS SHOWN ON THE PLANS. HOUSE LATERALS FROM CHIMNEYS SHALL NOT HAVE AN ANGLE OF LESS THAN 45° WITH THE MAIN LINE SEWER.

FRAMES IN CIRCLES AT ENDS OF HOUSE LATERALS INDICATE HOUSE LATERAL SHALL BE CONSTRUCTED AT 1/4" RISE PER FOOT TO PROPERTY LINE.

NO REVISIONS SHALL BE MADE IN THESE PLANS WITHOUT THE APPROVAL OF THE ENGINEER OF WORK AND CITY ENGINEER. THE CONTRACTOR SHALL NOTIFY THE ENGINEER OF WORK BY TELEPHONE, 24 HOURS IN ADVANCE AT LEAST TWENTY-FOUR HOURS BEFORE STARTING ANY WORK UNDER THIS CONTRACT.

EXCEPT AS OTHERWISE SHOWN, MANHOLES SHALL BE BRICK SEWER STRUCTURES PER S-3 OR PRECAST CONCRETE MANHOLES PER S-4 OR S-5.

USE STANDARD MANHOLE FRAMES AND COVERS, S-16, EXCEPT AS OTHERWISE SHOWN.

MANHOLE TOPS IN UNIMPROVED AREAS SHALL BE 6 INCHES BELOW FINISHED GRADE, AND MARKED AS SHOWN IN DETAIL NO. 1 PAGE 24, EXCEPT AS NOTED.

USE EXTRA STRENGTH PIPE, ALL PIPE IS STANDARD DEPTH EXCEPT AS NOTED.

USE MECHANICAL COMPRESSION JOINTS FOR ALL V.C.P. JOINTS PER SEC. 26, 48 & 49 OF STANDARD SPECIFICATIONS.

IF A POWER POLE IS WITHIN THREE FEET OF THE SEWER, THE SEWER SHALL BE ENCASED, PER S-12, TWO FEET ON EACH SIDE FROM THE POINT OF INTERFERENCE.

IF DURING THE COURSE OF CONSTRUCTION IT IS DETERMINED THAT THERE IS LESS THAN FOUR FEET OF COVER OVER THE TOP OF A MAIN LINE OR HOUSE LATERAL V.C.P. WHICH IS NOT INDICATED ON THE PLANS, THE PIPE SHALL BE ENCASED PER S-12, UNLESS OTHERWISE APPROVED BY THE ENGINEER OF WORK AND CITY ENGINEER.

WORKS IN CIRCLES AT ENDS OF HOUSE LATERALS INDICATE IT SHALL BE LAID FLAT AND HOUSE LATERAL CONSTRUCTED AT 1/4" RISE PER FOOT TO PROPERTY LINE.

ALL STATE AND LOCAL TRAFFIC SAFETY ORDERS SHALL BE STRICTLY ENFORCED.

FOR ALLOWABLE LEAKAGE TEST USE FORMULA NO. 2, SPEC. SEC. 54.

THE LOCATION OF HOUSE LATERALS SHOWN ON THE PLANS IS APPROXIMATE AND THE FINAL LOCATION WILL BE DETERMINED IN THE FIELD BY THE ENGINEER OF WORK.

THE LOCATION OF WYES SHOWN ON PLANS IS APPROXIMATE AND THE FINAL LOCATION WILL BE DETERMINED IN THE FIELD BY THE ENGINEER OF WORK.

WHERE MANHOLES ARE CONSTRUCTED ACCORDING TO S-A-204 OR S-A-204D, USE STANDARD FRAMES AND COVERS PER S-A-207 WITH COVER TO READ "C.S. NO. 8".

THE ENGINEER OF WORK WILL LOCATE, BY A STAKE AT PROPERTY LINE, ALL HOUSE CONNECTIONS AND WHERE NO CURB EXISTS WILL PROVIDE THE CONTRACTOR WITH THE CORRECT REFERENCE ELEVATION BETWEEN THE TOP OF THE STAKE AND THE SURFACE OVER SEWER FOR SETTING THE DEPTH OF THE HOUSE LATERAL.

T BRANCHES MAY BE USED IN PLACE OF Y BRANCHES, EXCEPT AS NOTED.

THE UNDERGROUND UTILITY COMPANIES WITH FACILITIES WITHIN THE LIMITS OF THIS PROJECT ARE:

- 1) SOUTHERN CALIFORNIA GAS CO.
- 2) SOUTHERN COUNTIES GAS CO.
- 3) PALOS VERDES WATER CO.

BEFORE BREAKING INTO ANY EXISTING STRUCTURE AND BEFORE FINAL ACCEPTANCE OF THIS WORK, COUNTY SANITATION DISTRICT (DU-1281) SHALL BE NOTIFIED IN ORDER THAT REQUIRED INSPECTION CAN BE MADE.

NO CONNECTIONS FOR THE DISPOSAL OF INDUSTRIAL WASTES SHALL BE MADE TO SEWERS SHOWN ON THESE DRAWINGS WITHOUT WRITTEN PERMISSION FROM THE CHIEF ENGINEER AND GENERAL MANAGER OF THE COUNTY SANITATION DISTRICTS.

PROFILE, ALIGNMENT AND GRADE OF **P.C. 7690**
SANITARY SEWERS PAGE 1
 TO BE CONSTRUCTED IN
ROLLING HILLS ESTATES SEWER IMPROVEMENT
SANITARY DISTRICT NO. 2
PRIVATE CONTRACT NO. 7690

W.S. 27
 12 SHEETS, 24 PAGES
 PREPARED IN THE OFFICES OF
KOEBIG & KOEBIG, INC.
 REG. C. E. NO. 13316 E
 40515

FOR LEGEND SEE PLAN NO. S-1

CITY OF ROLLING HILLS ESTATES, CALIFORNIA
JOHN A. LAMBIE, CITY ENGINEER
J. D. PARKHURST, CHIEF ENGINEER

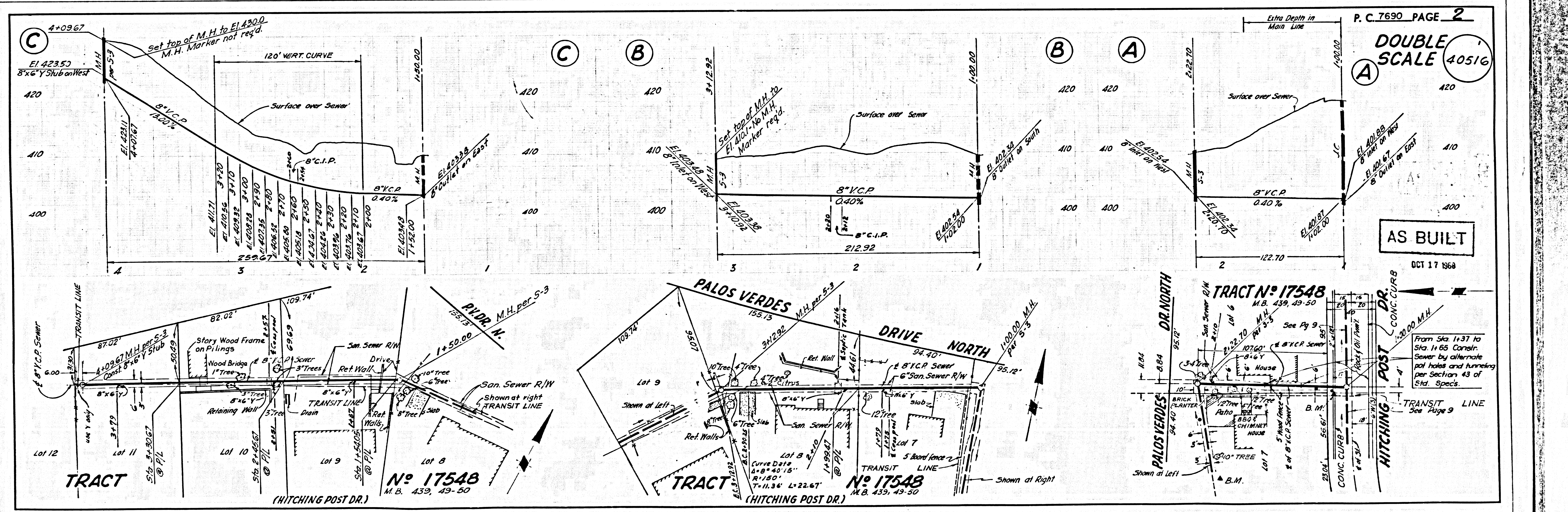
APPROVED BY: *Richard M. Coe* ASSISTANT SANITATION ENGINEER
 APPROVED BY: *E. M. Salsbury* OFFICE ENGINEER

SUBMITTED BY: *Robert Williams* REGIONAL BUSINESS
EDWARD M. SALSUBURY, ENGINEER OF WORK

CHECKED BY: *John J. Kelly* REG. C.E. NO. 13316 E

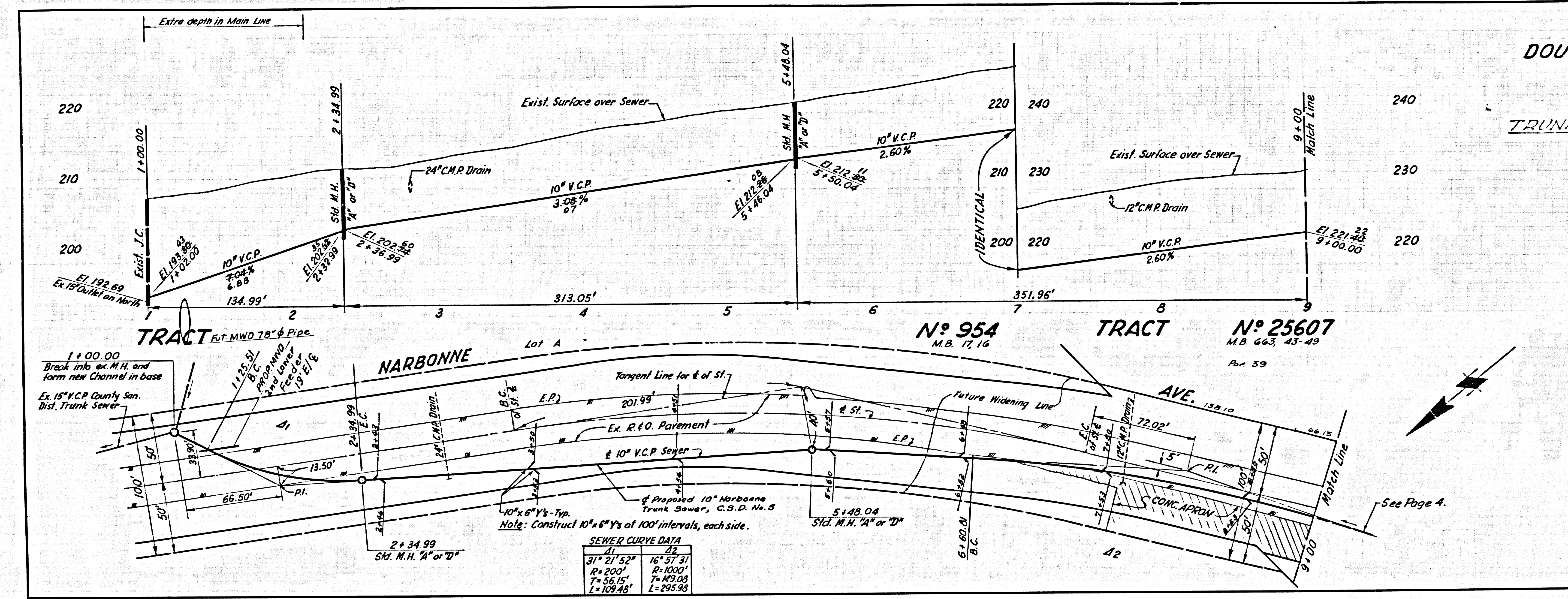
AS BUILT GUT 17 1968

REVISION NO. 1
 Changed Horiz. & Vert. Alignment of Sewer on
 Pages 2-B and 2-C
 APPROVED: *Edward M. Salsbury* Office of County Engineer, R. E. No. 11925



DOUBLE SCALE

TRUNK SEWER 40517



AS BUILT

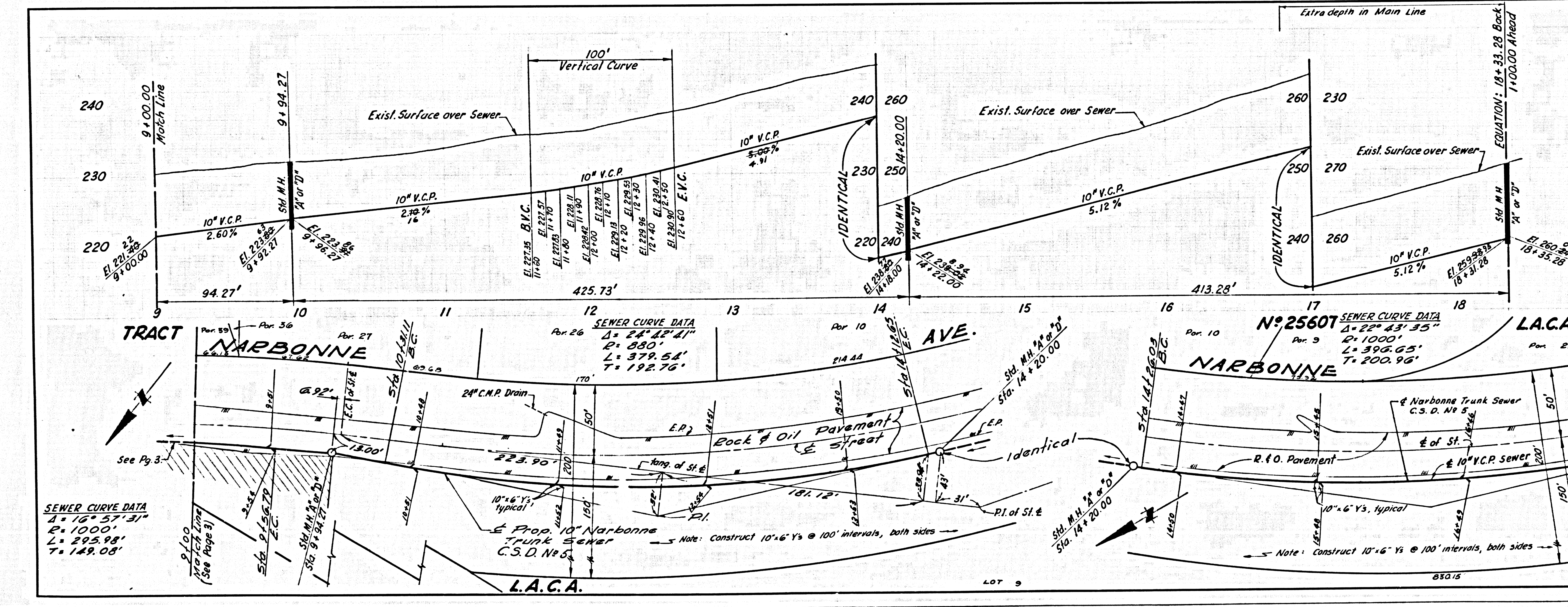
OCT 17 1958

DOUBLE SCALE

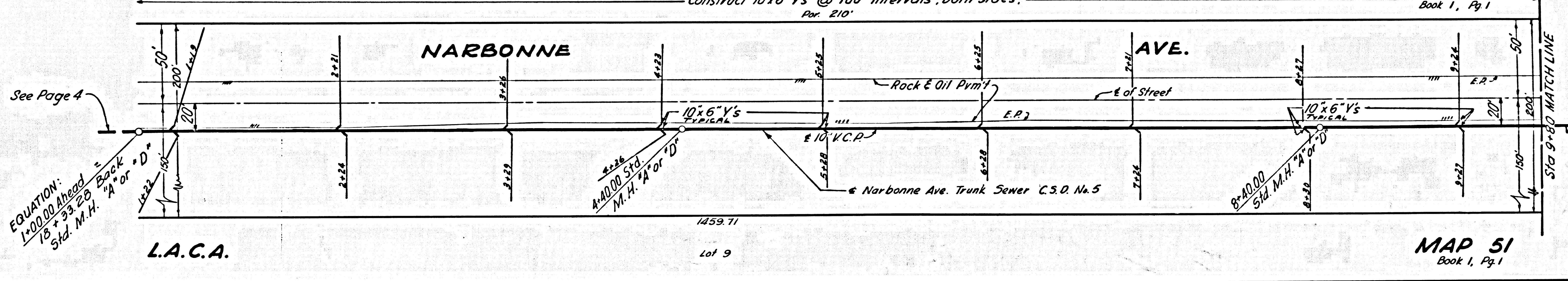
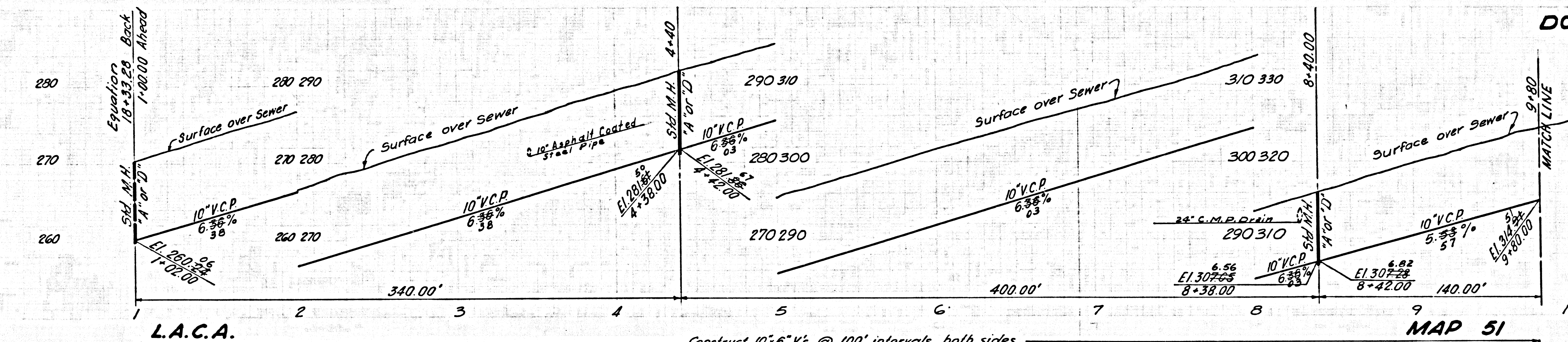
TRUNK SEWER 40518

AS BUILT

OCT 17 1958



DOUBLE SCALE



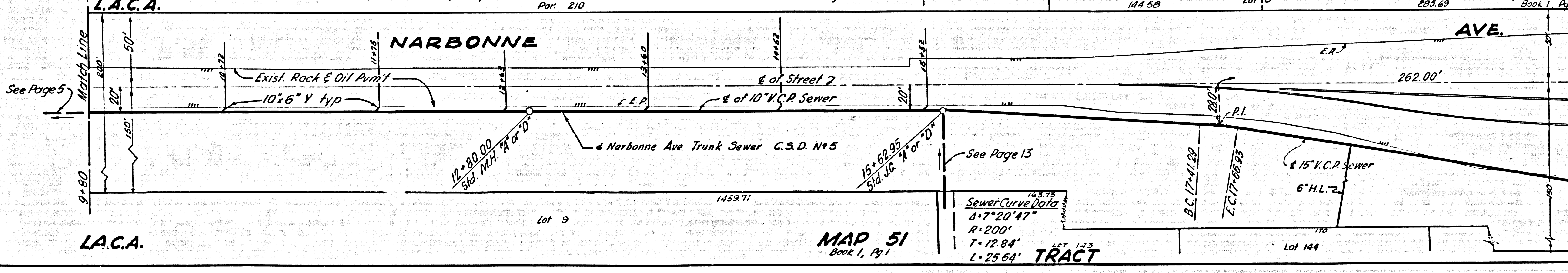
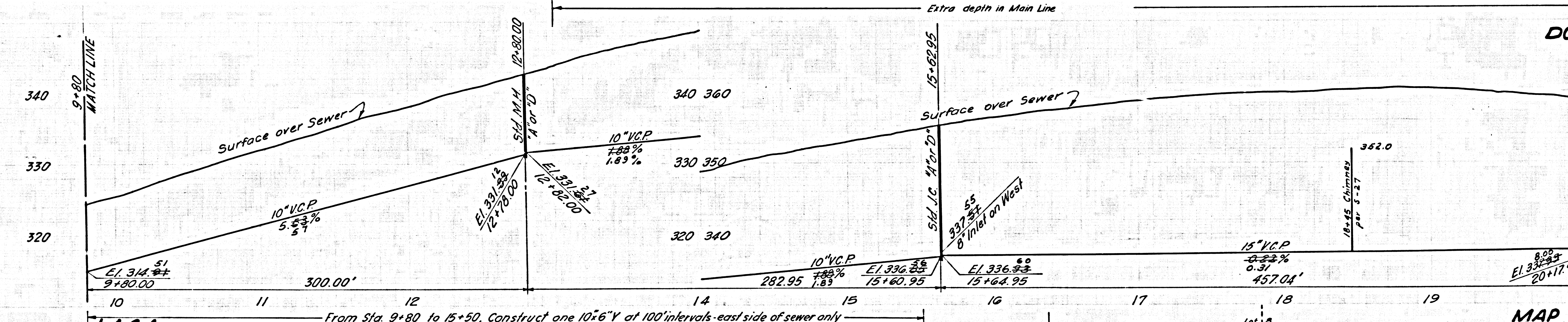
40519

TRUNK SEWER

AS BUILT

MAP 51 Book 1, Pg 1

DOUBLE SCALE



40520

TRUNK SEWER

AS BUILT

MAP 51 Book 1, Pg 1

