

B.M. 60-33 ELEV 1329.265 (1961 Adj)
 480' 00" E. Golden State Highway 98.32.5140 Lyons
 Ave. 4.50' easterly from right side of M 1543
 155.1' 140' P.P. # 419 and about 109' 11" 0' P.P. #
 191215E & State of Calif. Comp. Tol. Comp. 20'-30'-40'
 18 2839-23 QUAD. 19 61

THE FOLLOWING COUNTY STANDARD
 PLANS APPLY TO THIS PROJECT:

- 1. MINIMUM PUBLIC SAFETY REQUIREMENTS 5-1
- 2. BRICK MANHOLE 5-2
- 3. NON-REINFORCED PRECAST CONC. MANHOLE 5-3
- 4. REINFORCED PRECAST CONC. MANHOLE 5-4
- 5. MANHOLE FRAME AND COVER 5-5
- 6. MANHOLE STEP 5-6
- 7. 8" TO 12" V.C.P. 5-7
- 8. 8" TO 12" V.C.P. ENCASEMENT 5-8
- 9. CREDLING AND ENCASEMENT 5-9
- 10. V.C.P. ENCASEMENT & BRICK MANHOLE 5-10
- 11. MINIMUM TRENCH WIDTH 5-11
- 12. CHIMNEY PIPE AND BASE 5-12

DOUBLE SCALE
NEWHALL BLDG. DIST. NO. 82

PROFILE, ALIGNMENT AND GRADE OF
SANITARY SEWERS PAGE 1
 CONSTRUCTED AS
OUTLET SEWER FOR PORTION/TRACT 25114

PRIVATE CONTRACT NO. 7693

W.S. 62
 3 SHEETS, 8 PAGES
 SCALE: VERT. 1"=8' HORIZ. 1"=40'
 DATE: JUNE, 1966

40438

PREPARED IN THE OFFICE OF
VOORHEIS-TRINDLE CO.
 5919 VAN NUYS BLVD., VAN NUYS, CALIF.
 BY: *Michael J. Madden*
 REG. C. E. NO. 16788

FOR LEGEND SEE PLAN NO. S-1

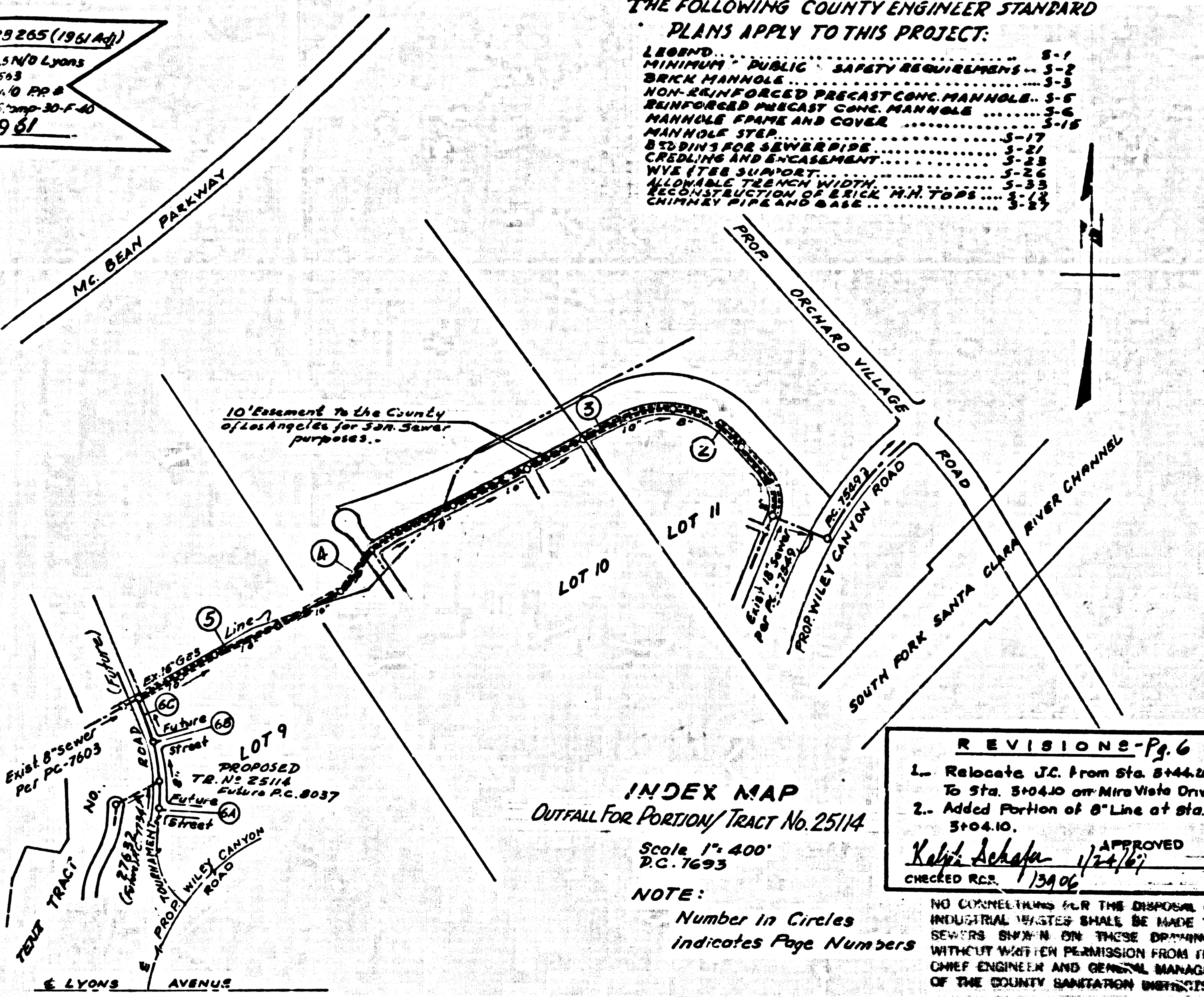
NOTES:
 1. GRADES TO WHICH THIS IMPROVEMENT IS TO BE CONSTRUCTED ARE SHOWN ON PLANS AND PROFILES. GRADE POINTS FOR TOP OF CURB, CENTER LINE OF STREETS, OR CENTER LINE OF ALLEYS ARE SHOWN BY CHECKS ON PROFILES. AT ALL POINTS BETWEEN ESTABLISHED POINTS THE GRADE SHALL BE ESTABLISHED TO AGREE TO CONFORM TO A STRAIGHT LINE DRAWN BETWEEN SAID ESTABLISHED POINTS.
 2. REVISIONS SHALL BE CONSTRUCTED ACCORDING TO STANDARD SPECIFICATIONS FOR PUBLIC WORKS CONSTRUCTION AND COUNTY AND STATE SPECIFICATIONS FOR PUBLIC WORKS CONSTRUCTION.
 3. THE DRAWING AND THE DATA HEREON ARE HEREBY MADE A PART OF THE SPECIFICATIONS.
 4. BEFORE WORK CAN BE STARTED, THE CONTRACTOR MUST OBTAIN A PERMIT TO EXCAVATE IN COUNTY STREETS FROM THE L.A. COUNTY PUBLIC WORKS DEPARTMENT, DISTRICT OFFICE NO. 1, 1111 N. GARDEN STREET, LOS ANGELES, CALIF. AND PAY A FEE TO THE COUNTY ENGINEER, SOILS AND COUNTY ENGINEERING DEPARTMENT, DISTRICT OFFICE NO. 1, 1111 N. GARDEN STREET, LOS ANGELES, CALIF. TO COVER THE COST OF CONSTRUCTION INSPECTION AND RECORD PLANS.
 5. APPROVAL OF THIS PLAN BY THE COUNTY OF LOS ANGELES DOES NOT CONSTITUTE A REPRESENTATION AS TO THE ACCURACY OF THE LOCATION OF OR THE EXISTENCE OR NON-EXISTENCE OF ANY UNDERGROUND UTILITY PIPE, OR STRUCTURE WITHIN THE LIMITS OF THIS PROJECT. THE NOTE APPLIES TO ALL PAGES.
 6. IF WORK IS TO BE DONE IN A STATE HIGHWAY, A PERMIT MUST BE OBTAINED FROM THE STATE OF CALIFORNIA, DIVISION OF HIGHWAYS, 120 SOUTH BRIDGE STREET, LOS ANGELES, CALIF.

COUNTY OF LOS ANGELES, CALIFORNIA
 JOHN A. LAMBE, COUNTY ENGINEER J. D. PARKHURST, CHIEF ENGINEER
 CO. SEAL NO. 100-22
 APPROVED BY: *John A. Lambe* APPROVED BY: *J. D. Parkhurst*
 DISTRICT ENGINEER OFFICE ENGINEER

CHECKED BY: *Ralph Schuler* 11/29/66
 DATE: 11-29-66
 REG. C. E. NO. 1346

J.N. 0250.02

ALL GRADING TO BE
 COMPLETED BY OTHERS
 PRIOR TO CONSTRUCTION
 OF THIS SEWER.
 EXCEPT AS
 NOTED ON PLANS



REVISIONS - Pg. 6
 1. Relocate J.C. from Sta. 5144.40 to Sta. 5104.10 on Mira Vista Drive.
 2. Added Portion of 8" Line at Sta. 5104.10.

APPROVED BY: *Ralph Schuler* 11/24/66
 CHECKED BY: *Ralph Schuler* 11/24/66
 DATE: 11-24-66
 OFFICE OF THE COUNTY ENGINEER

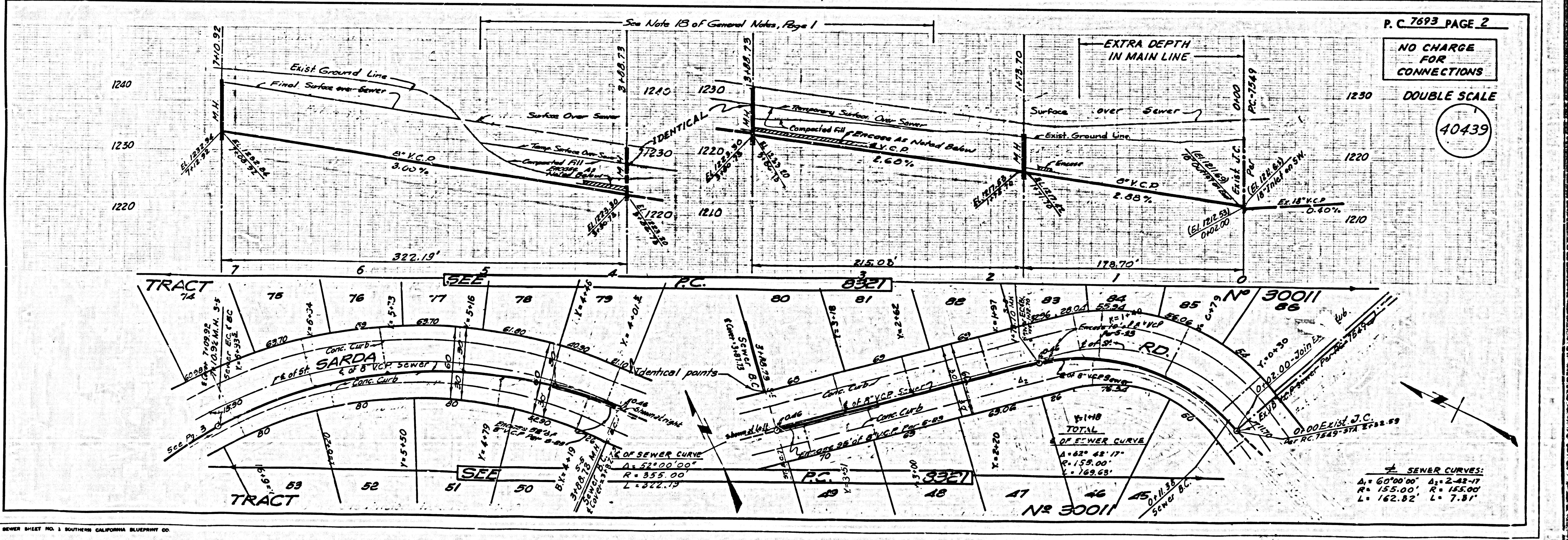
REVISIONS:
 1. Revised alignment, grades and pipe sizes on pages 2-5.
 2. Sewer alignment to be checked by field staff under the field corresponding with above changes.

APPROVED BY: *John A. Lambe* 11/24/66
 CHECKED BY: *Ralph Schuler* 11/24/66
 DATE: 11-24-66
 OFFICE OF THE COUNTY ENGINEER

REVISIONS:
 1. Proposed temporary base from 8" V.C.P. to 8" V.C.P. on page 5.
 2. Revised chimney of 8" V.C.P. on page 5.
 3. Added chimney of 8" V.C.P. on page 5.
 4. Added chimney of 8" V.C.P. on page 5.
 5. Added chimney of 8" V.C.P. on page 5.
 6. Added chimney of 8" V.C.P. on page 5.
 7. Added chimney of 8" V.C.P. on page 5.
 8. Added chimney of 8" V.C.P. on page 5.
 9. Added chimney of 8" V.C.P. on page 5.
 10. Added chimney of 8" V.C.P. on page 5.

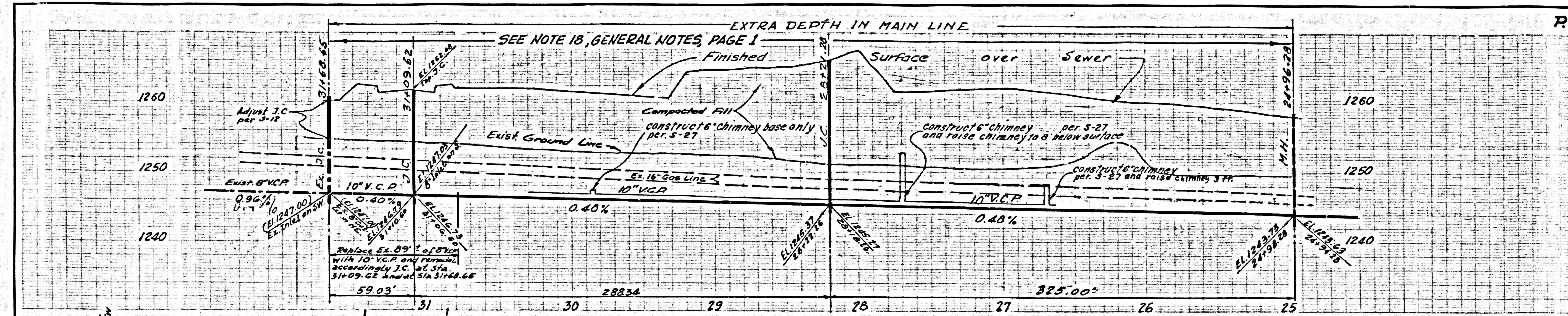
APPROVED BY: *John A. Lambe* 11/24/66
 CHECKED BY: *Ralph Schuler* 11/24/66
 DATE: 11-24-66
 OFFICE OF THE COUNTY ENGINEER

REVISIONS:
 1. Added 2" of 8" chimney pipe & 8" house lateral of Sta. 25-70, page 5.
 2. Added 6" house lateral of Sta. 25-22, page 5.
 APPROVED BY: *John A. Lambe* 11/24/66
 CHECKED BY: *Ralph Schuler* 11/24/66
 DATE: 11-24-66
 OFFICE OF THE COUNTY ENGINEER



P. C. 7693 PAGE 2
 NO CHARGE FOR CONNECTIONS
 DOUBLE SCALE
 40439

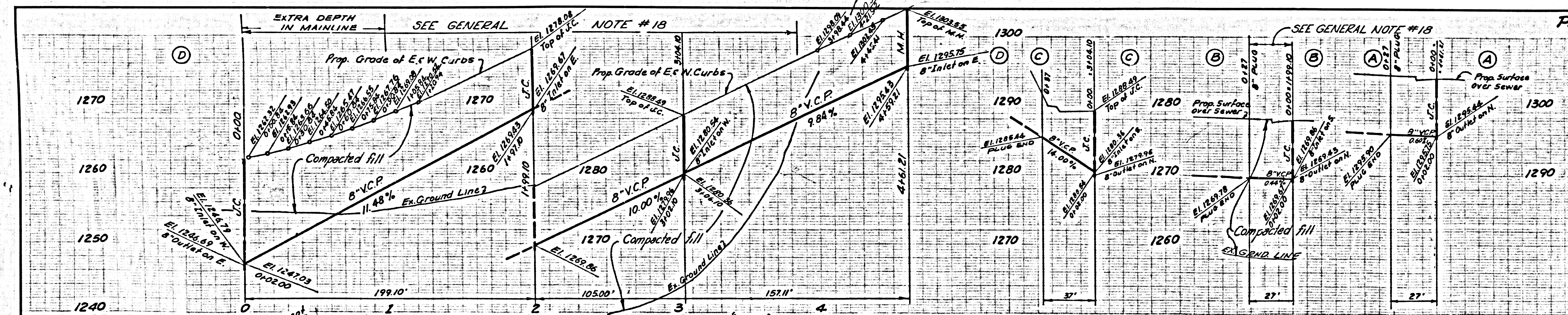
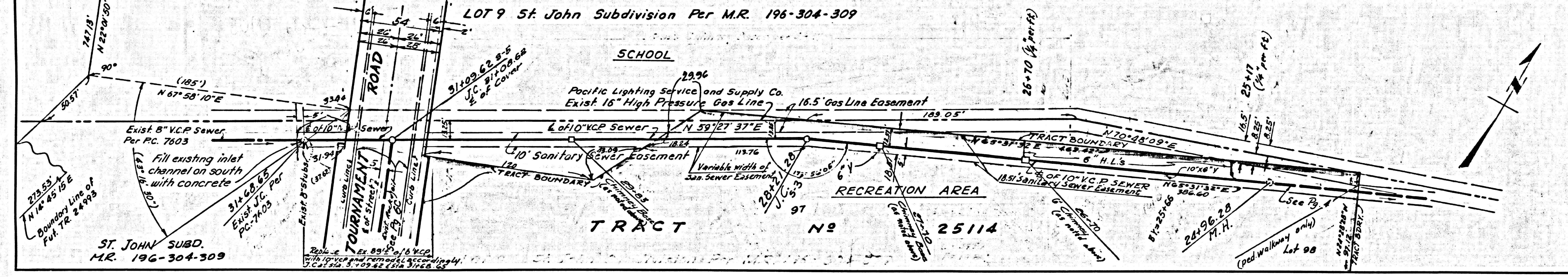
SEWER CURVES:
 A= 60°00'00" A1= 2-42-17
 R= 155.00' R= 155.00'
 L= 162.82' L= 7.81'



P.C. 7693 PAGE 5
NO CHARGE FOR CONNECTIONS

DOUBLE SCALE

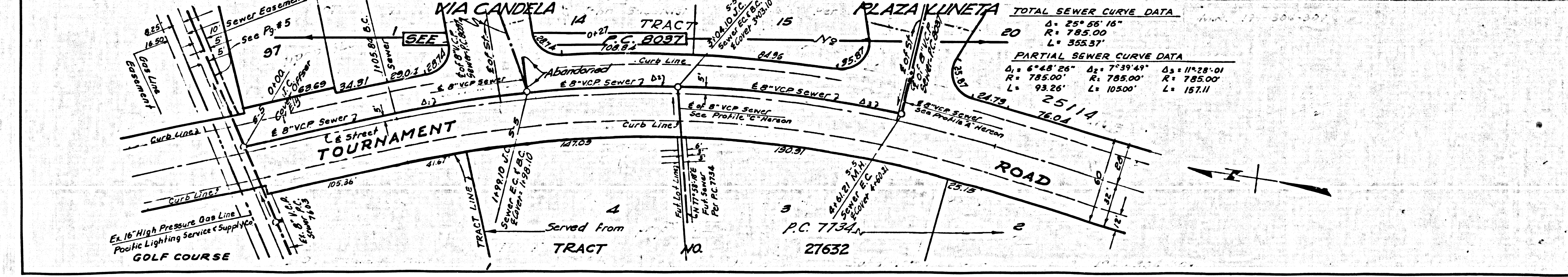
40442



P.C. 7693 PAGE 6
NO CHARGE FOR CONNECTIONS

DOUBLE SCALE

40443



TOTAL SEWER CURVE DATA					
Δ	25° 55' 16"				
R	785.00'				
L	355.31'				
PARTIAL SEWER CURVE DATA					
Δ_1	6° 48' 28"	Δ_2	7° 39' 49"	Δ_3	11° 28' 01"
R_1	785.00'	R_2	785.00'	R_3	785.00'
L_1	93.26'	L_2	105.00'	L_3	157.11'