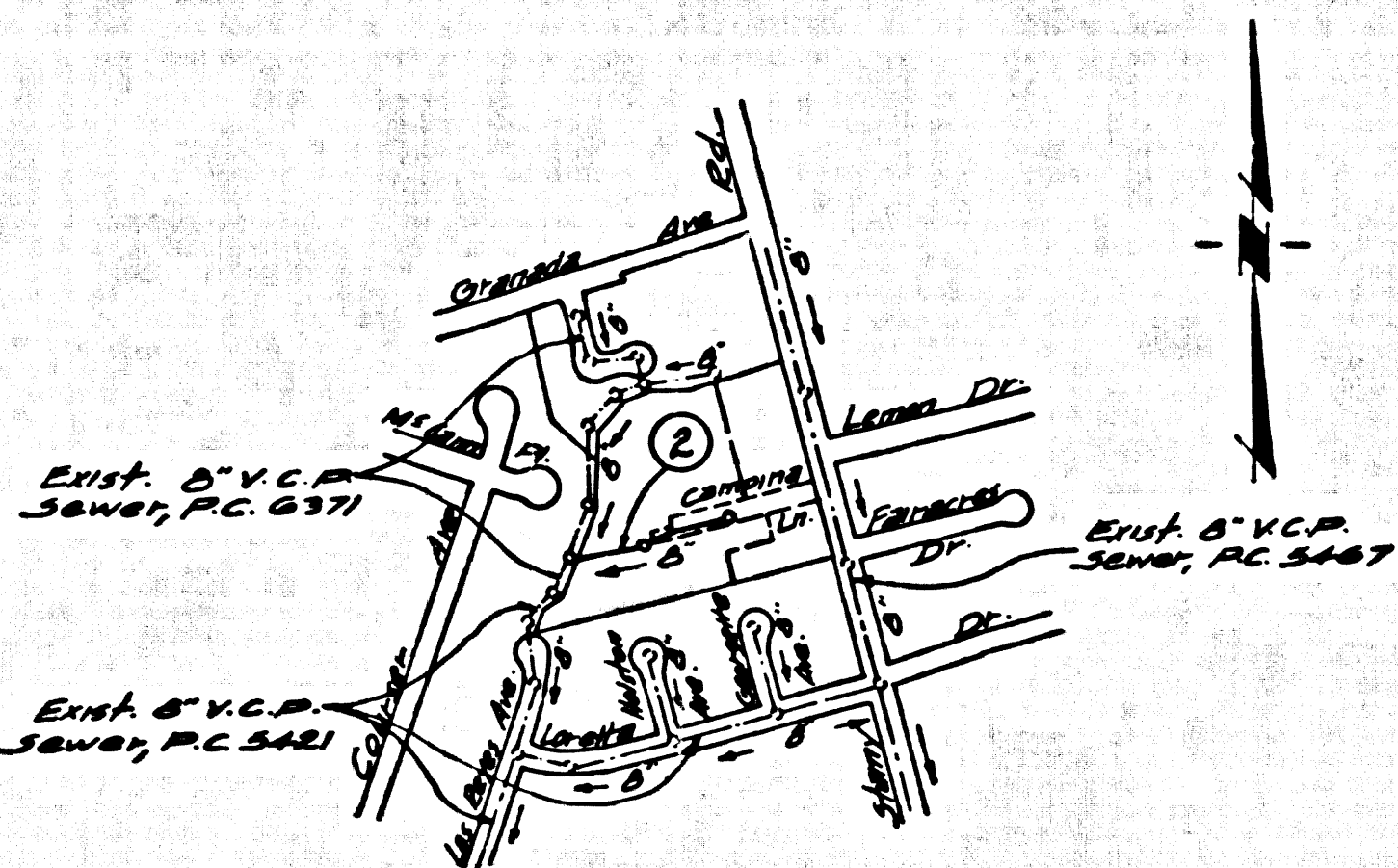


B.M. BY 2734 ELEV. 224.828  
 L & W. 3' W/O B.C.E. N.W. COR.  
 Leffingwell Rd. & 5th St. rd.  
 (North) 30' North & 60' West  
 of 6' int.  
 LA MIRADA QUAD. 19 63A4j

**PRIVATE ENGINEER'S NOTICE TO CONTRACTOR**

THE EXISTING AND APPROXIMATE LOCATION OF UNDERGROUND UTILITIES AND STRUCTURES SHOWN ON THESE PLANS IS THE RESULT OF A SURVEY MADE BY THE ENGINEER AND CONTRACTOR. THE CONTRACTOR IS RESPONSIBLE FOR VERIFYING THE LOCATION AND DEPTH OF ALL UTILITIES AND STRUCTURES NOT OF RECORD OR NOT SHOWN ON THESE PLANS.

Robert R. Flores 5-6-1966  
 R.C.E. 11349 DATE



**INDEX MAP**  
 CAMPINA LANE  
 P.C. 7694  
 SCALE: 1" = 600'

REVISION NO 1	
Proc. E. Release M.H. from Sta. 2+79.87 to Sta. 3+14.00. Lower mainline sewer between Sta. 1+52.00 & Sta. 3+14.00	
Robert R. Flores	1-6-67
Engineer R.C.E. #11349	DATE
Approved: <i>Quintin E. McCall</i>	1/10/67
Office of Co. Engr. R.C.E. 15731	DATE

**DOUBLE VERTICAL SCALE**  
 LA MIRADA BLDG. DIST. NO. 4-08

- PROVIDE STAKES ON THE PROPERTY LINE OR PROPERTY LINES PRODUCED AT RIGHT ANGLES TO THE SEWER LINE AT THE CENTER LINE OF EACH MANHOLE.
- NO REPRESENTATIVE OF THE CITY ENGINEER WILL SURVEY OR LAY OUT ANY PORTION OF THE WORK.
- THE PRIVATE ENGINEER SHALL FURNISH THE CITY ENGINEER WITH GRADE SHEETS AND STATIONING FOR ALL HOUSE LATERALS AND "T" BRANCHES AND SHALL PROVIDE STAKES FOR THEM AT THEIR PROPER LOCATIONS WITH STATIONING PLAINLY MARKED. ALL HOUSE LATERALS SHALL BE CONSTRUCTED IN A STRAIGHT ALIGNMENT AT RIGHT ANGLES FROM THE MAIN LINE SEWER EXCEPT AS SHOWN ON THE PLANS. HOUSE LATERALS FROM CHIMNEYS SHALL NOT HAVE AN ANGLE OF LESS THAN 45° WITH THE MAIN LINE SEWER. ANY CHANGE IN ALIGNMENT SHALL BE REQUESTED IN WRITING BY THE PRIVATE ENGINEER.
- THE PRIVATE ENGINEER SHALL FURNISH THE HOUSE LATERAL DEPTH AT THE PROPERTY LINE BELOW THE TOP OF CURB ELEVATION FOR EACH HOUSE LATERAL ON THE GRADE SHEET.
- NO REVISIONS SHALL BE MADE IN THESE PLANS WITHOUT THE APPROVAL OF THE CITY ENGINEER.
- THE CONTRACTOR SHALL NOTIFY THE CONSTRUCTION DIVISION BY TELEPHONE, MADISON 9-0707, EXT. 8150, AT LEAST TWENTY-FOUR HOURS BEFORE STARTING ANY WORK UNDER THE CONTRACT.
- MANHOLES SHALL BE BRICK SEWER STRUCTURES PER S.2.
- USE STANDARD MANHOLE FRAMES AND COVERS, S-18, EXCEPT AS NOTED.
- MANHOLE TOPS IN UNIMPROVED RIGHTS-OF-WAY TO BE SIX INCHES ABOVE FINISHED GRADE.
- USE EXTRA STRENGTH PIPE, ALL PIPE IS STANDARD DEPTH EXCEPT AS NOTED.
- USE MECHANICAL COMPRESSION JOINTS FOR ALL V.C.P. JOINTS PER S.P.C.'S, SECS. 34, 46 & 49.
- IF A POWER POLE IS WITHIN THREE FEET OF THE SEWER, THE SEWER SHALL BE ENCASED, PER S.22, TWO FEET ON EACH SIDE FROM THE POINT OF INTERFERENCE.
- IF DURING THE COURSE OF CONSTRUCTION IT IS DETERMINED THAT THERE IS LESS THAN FOUR FEET OF COVER OVER THE TOP OF A MAIN LINE OR HOUSE LATERAL V.C.P. SEWER WHICH IS NOT INDICATED ON THE PLANS, THE PIPE SHALL BE ENCASED PER S.22, UNLESS OTHERWISE APPROVED BY THE CITY ENGINEER.
- RESURFACE ALL TRENCHES WITHIN PAVED AREAS TO MEET L.A. COUNTY ROAD DEPT. OR CALIFORNIA STATE HIGHWAY REQUIREMENTS IN ACCORDANCE WITH PERMITS.
- FOR ALLOWABLE LEAKAGE TEST USE FORMULA NO. 2, S.P.C.'S, SEC. 54.
- ALL STATE AND LOCAL TRENCH SAFETY ORDERS WILL BE STRICTLY ENFORCED.
- ALL CONTRACTOR SHALL REPLACE ALL TREES, SHRUBS & DISTURBED PAVING TO THE SATISFACTION OF THE CITY ENGINEER.

NO COMPENSATION FOR THE DISPOSAL OF INDUSTRIAL WASTES SHALL BE MADE TO SEWERS SHOWN ON THESE DRAWINGS WITHOUT WRITTEN PERMISSION FROM THE CHIEF ENGINEER AND GENERAL MANAGER OF THE COUNTY BANIATION DISTRICTS.

**COLLECT CHARGES AS INDICATED**  
*McCall* 11-15-66

PROFILE, ALIGNMENT AND GRADE OF P.C. 7694  
 SANITARY SEWERS PAGE 1

TO BE CONSTRUCTED IN  
 CAMPINA LANE  
 (Private Street)

PRIVATE CONTRACT NO. 7694

W.S. 34  
 1 SHEET, 2 PAGES  
 SCALE: HORIZ. 1" = 40' VERT. 1" = 4' MAY 1966 38857

PREPARED BY THE OFFICES OF  
 KEMMERER ENGR. CO. INC.  
 145 NO. PAINTER AVE. WHITTIER, CALIF.  
 BY: Robert R. Flores  
 REG. C. E. NO. 11349

FOR LEGEND SEE PLAN NO. S-1

NOTE:  
 GRADES TO WHICH THIS IMPROVEMENT IS TO BE CONSTRUCTED ARE SHOWN ON PLANS AND PROFILES. GRADE POINTS FOR TOP OF CURBS, CENTER LINE OF STREETS, OR CENTER LINE OF ALLEYS ARE SHOWN BY CIRCLES ON PROFILES. AT ALL POINTS BETWEEN DESIGNATED POINTS THE GRADE SHALL BE ESTABLISHED SO AS TO COMFORM TO A STRAIGHT LINE BETWEEN SAID DESIGNATED POINTS.  
 ELEVATIONS ARE IN FEET ABOVE U.S.C. & G.S. MEAN LEVEL, DATUM OF 1929.  
 THE DRAWINGS AND THE DATA HEREON ARE HEREBY MADE A PART OF THE SPECIFICATIONS.  
 WORK SHALL BE CONSTRUCTED ACCORDING TO STANDARD SPECIFICATIONS DATED 5/25/62, ON FILE IN THE OFFICE OF THE CITY ENGINEER AND SHALL BE PROSECUTED ONLY IN THE PRESENCE OF THE CITY ENGINEER.  
 BEFORE WORK CAN BE STARTED, THE CONTRACTOR MUST OBTAIN A PERMIT TO EXCAVATE IN CITY STREETS FROM THE CITY OF LA MIRADA, 15505 CANTWELLER AVE. LA MIRADA, CALIF. SUFFICIENT TO COVER THE COST OF CONSTRUCTION INSPECTION AND RECORD PLANS.  
 APPROVAL OF THIS PLAN BY THE CITY OF LA MIRADA DOES NOT CONSTITUTE A WARRANTY FROM AS TO THE ACCURACY OF THE LOCATION OR OF THE EXISTENCE OR NON-EXISTENCE OF ANY UNDERGROUND UTILITY PIPE, OR STRUCTURE WITHIN THE LIMITS OF THE PROJECT. THIS NOTE APPLIES TO ALL PAGES.  
 IF WORK IS TO BE DONE IN A STATE HIGHWAY, A PERMIT MUST BE OBTAINED FROM THE STATE OF CALIFORNIA, DIVISION OF HIGHWAYS, 126 SOUTH SPRING STREET, LOS ANGELES, CALIFORNIA.

CITY OF LA MIRADA, CALIFORNIA  
 JOHN A. LAMBIE, CITY ENGINEER J. D. PARKHURST, CHIEF ENGINEER  
 CO. SAN. DIST. NO. 10  
 APPROVED BY: *Russell* APPROVED BY: *McCall*  
 SUBMITTED BY: *Robert R. Flores*  
 145 CAROLTON REGIONAL ENGINEER R.C.E. #11349  
 CHECKED BY: *Quintin E. McCall*  
 REG. C. E. NO. 15731

P. C. 7694 PAGE 2

NO CHARGE FOR CONNECTIONS  
 DOUBLE SCALE

38858

