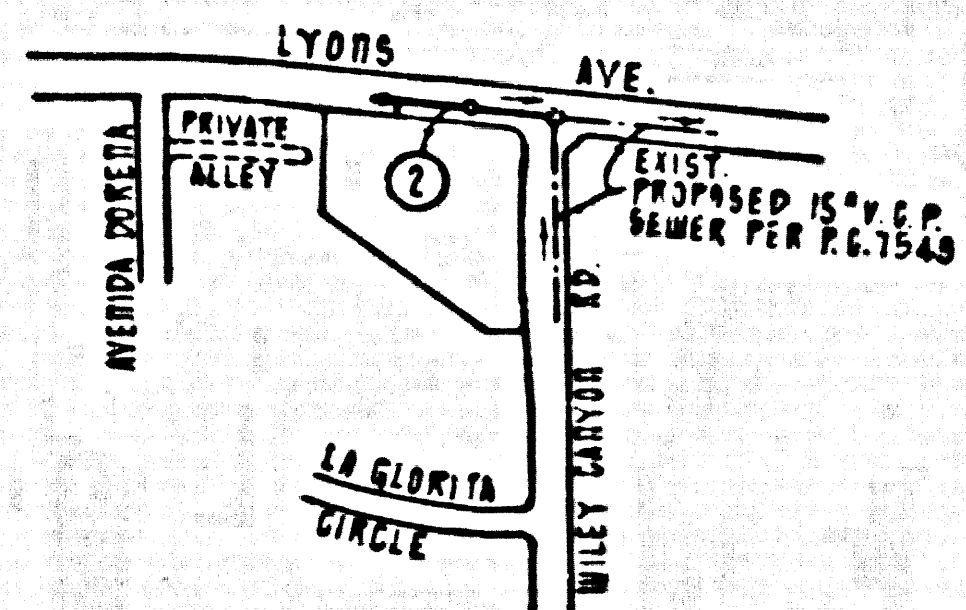


B.M. S.L. 642 ELEV. 1262.071
 RD DEPT. B.M. TAG R. SIDE CONC. BASE AT N.E. COR.
 EDISON HIGH TENSION TOWER # 437-3WS-3
 3.38 FT. SW. / CL LYONS AVE. & 3.30 FT. E. / CL
 WILEY CANYON RD.
 NEWHALL QUAD. 19.58



P.C. 7697
 INDEX MAP
 SCALE: 1" = 600'

ISSUE NO HOUSE CONNECTION PERMITS UNTIL P.C. 7549 HAS BEEN ACCEPTED BY THE COUNTY OF LOS ANGELES.

APPROVED IND. WASTE DIV.
 By: *Paul H. Kitchner*
 Date: 8-30-66

NEWHALL BLDG. DIST. NO. 8.2

- NOTES:
1. HOUSE STAGES ON THE PROPERTY LINE OR PROPERTY LINES PROVIDED AT RIGHT ANGLES TO THE SEWER LINE AT THE CENTER LINE OF EACH MANHOLE.
 2. THE REPRESENTATIVE OF THE COUNTY ENGINEER WILL SURVEY ON LAY OUT ANY PORTION OF THE WORK.
 3. THE PRIVATE ENGINEER SHALL FURNISH THE COUNTY ENGINEER WITH READY SHOTS AND STATIONINGS FOR ALL HOUSE LATERALS AND "T" MANHOLES AND SHALL PROVIDE GRADES FOR THEM AT THEIR PROPOSED LOCATIONS WITH STATIONINGS PLAINLY MARKED. ALL HOUSE LATERALS SHALL BE CONSTRUCTED AT RIGHT ANGLES FROM THE MAIN LINE SEWER EXCEPT AS SHOWN ON THE PLANS. HOUSE LATERALS FROM CHIMNEYS SHALL SHIP SHOTS AT AN ANGLE OF 180° FROM "T" WITH THE MAIN LINE SEWER. ANY CHANGE IN ALIGNMENT SHALL BE REQUESTED BY THE PRIVATE ENGINEER.
 4. THE PRIVATE ENGINEER SHALL FURNISH THE HOUSE LATERAL SHOTS AT THE PROPERTY LINE BELOW THE TOP OF CURB ELEVATION FOR EACH HOUSE LATERAL ON THE GRASS SHEET.
 5. NO REVISIONS SHALL BE MADE IN THESE PLANS WITHOUT THE APPROVAL OF THE COUNTY ENGINEER.
 6. THE CONTRACTOR SHALL NOTIFY THE CONSTRUCTION SUPERVISOR BY TELEPHONE, HANDSON 9-497, EXT. 3826, AT LEAST TWENTY-FOUR HOURS BEFORE STARTING ANY WORK UNDER THIS CONTRACT.
 7. MANHOLES SHALL BE BRICK SEWER STRUCTURES PER S.E. PRECAST CONCRETE MANHOLES PER S.D. OR S.M. MAY BE USED AS AN ALTERNATE IN LOCATIONS APPROVED BY THE COUNTY ENGINEER.
 8. USE STANDARD MANHOLE FRAMES AND COVERS, S.I.E. EXCEPT AS NOTED.
 9. MANHOLE POLES OR UNIMPROVED HOLES OF ANY KIND TO BE EXCLUDED ABOVE FINISHED GRADE.
 10. USE EXTRA STRENGTH PIPE, ALL 7" IS STANDARD PIPE EXCEPT AS NOTED.
 11. USE MECHANICAL COMPRESSION JOINTS FOR ALL V.C.P. JOINS PER S.P.C.S., SECT. 36, 40 & 41.
 12. IF A POWER POLE IS WITHIN THREE FEET OF THE SEWER, THE SEWER SHALL BE ENCASED, PER S.D.S. TWO FEET ON EACH SIDE FROM THE POINT OF APPROXIMATION.
 13. IF BEHIND THE CURB OR CONSTRUCTION IT IS DETERMINED THAT THERE IS LESS THAN FOUR FEET OF COVER OVER THE TOP OF A MAIN LINE OR HOUSE LATERAL V.C.P. SEWER WHICH IS NOT INDICATED ON THE PLANS, THE PIPE SHALL BE ENCASED PER S.D.S. UNLESS OTHERWISE APPROVED BY THE COUNTY ENGINEER.
 14. HOUSE LATERALS TO BE CONSTRUCTED WITH SHOTS AT PROPERTY LINE & MUST SHOW CURB GRADE EXCEPT AS NOTED.
 15. INDICATE ALL TRENCHES WHICH HAVE BEEN MADE TO MEET L.A. COUNTY ROAD DEPT. OR CALIFORNIA STATE HIGHWAY REQUIREMENTS IN ACCORDANCE WITH PERMITS.
 16. FOR ALLOWANCE MESSAGE PER USE FORMS AND S.P.C.S., SEC. 4.
 17. ALL STATE AND LOCAL TRENCH SAFETY ORDERS WILL BE STRICTLY ENFORCED.

NO CONNECTIONS FOR THE DISPOSAL OF INDUSTRIAL WASTES SHALL BE MADE TO CHANNELS SHOWN ON THESE DRAWINGS WITHOUT WRITTEN PERMISSION FROM THE CHIEF ENGINEER AND GENERAL MANAGER OF THE COUNTY SANITATION DISTRICTS.

COLLECT CHARGES AS INDICATED
Edith Schafar

PROFILE, ALIGNMENT AND GRADE OF P.C. 7697
 SANITARY SEWERS PAGE 1

TO BE CONSTRUCTED IN
 LYONS AVENUE
 TO SERVE
 THRIFTMART SHOPPING CENTER
 PRIVATE CONTRACT NO. 7697

W.S. 82
 1 SHEETS, 2 PAGES
 SCALE: HORIZ. 1" = 40'
 VERT. 1" = 4'
 JULY 1, 1966
 PREPARED IN THE OFFICE OF

38742

By: *Louis M. Verban*
 REG. C. & NO. 13356
 FOR LEGEND SEE PLAN NO. S-1

NOTES:
 GRADES TO WHICH THIS IMPROVEMENT IS TO BE CONSTRUCTED ARE SHOWN ON PLANS AND PROFILES. GRADE POINTS FOR TOP OF CURB, CENTER LINE OF STREETS, OR CENTER LINE OF ALLEYS ARE SHOWN BY CIRCLES ON PROFILES. AT ALL POINTS BY WHICH UNDERMINED POINTS THE GRADE SHALL BE ESTABLISHED SO AS TO CONFORM TO A STANDARD AND BEHIND ANY UNDERMINED POINTS, REVISIONS AND RE-SET ABOVE U.C. & S.E. BE LAYED OUT BY THE ENGINEER. THIS DRAWING AND THE DATA HEREON ARE HEREBY MADE A PART OF THE SPECIFICATIONS. THIS DRAWING IS THE PROPERTY OF THE COUNTY ENGINEER AND SHALL BE FURNISHED ONLY IN THE INTEREST OF THE COUNTY ENGINEER. NO REVISIONS OR CHANGES SHALL BE MADE WITHOUT THE WRITTEN PERMISSION OF THE COUNTY ENGINEER. THE COUNTY ENGINEER SHALL BE RESPONSIBLE FOR THE ACCURACY OF THE DATA AND THE COUNTY ENGINEER SHALL BE RESPONSIBLE FOR THE ACCURACY OF THE DATA AND THE COUNTY ENGINEER SHALL BE RESPONSIBLE FOR THE ACCURACY OF THE DATA AND THE COUNTY ENGINEER SHALL BE RESPONSIBLE FOR THE ACCURACY OF THE DATA.

COUNTY OF LOS ANGELES, CALIFORNIA
 JOHN A. LAMBE, COUNTY ENGINEER
 I. D. PARKHURST, CHIEF ENGINEER
 APPROVED BY: *[Signature]* APPROVED BY: *[Signature]*
 SANITATION ENGINEER OFFICE ENGINEER

APPROVAL BY SANITATION DISTRICT IS WITH THE UNDERSTANDING THAT NO HOUSE CONNECTION PERMITS WILL BE ISSUED UNTIL AUTHORIZED BY THE SANITATION DISTRICT.
 CHECKED BY: *[Signature]* 8/13/66
 REG. C. & NO. 13346

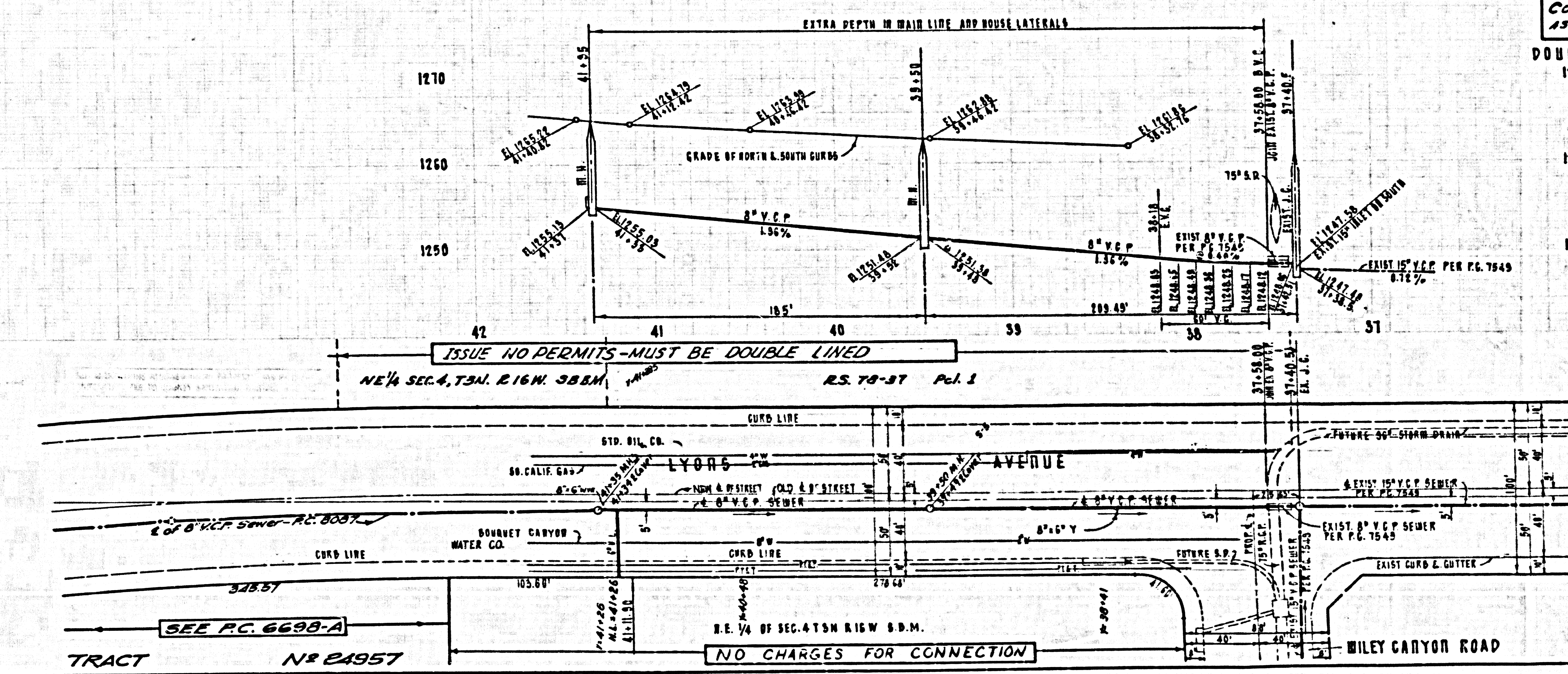
J.N. 0567.86

P.C. 7697 PAGE 2

COLLECT CHARGES AS INDICATED

DOUBLE SCALE

38743



Issue no House Connection Permits until authorized by Sanitation District. Check with San. Div.

SEE P.C. 6698-A

NO CHARGES FOR CONNECTION