

B.M. S.L. 1729 ELEV. 1356.859
 I.S. Tag 2602 in West Curb 5' South
 of B.C. of S.W. Cor. of Whites Cr.
 Rd. and Corner S1 55' South and
 40' West of Intersect. QUAD. 1958
 NEWHALL

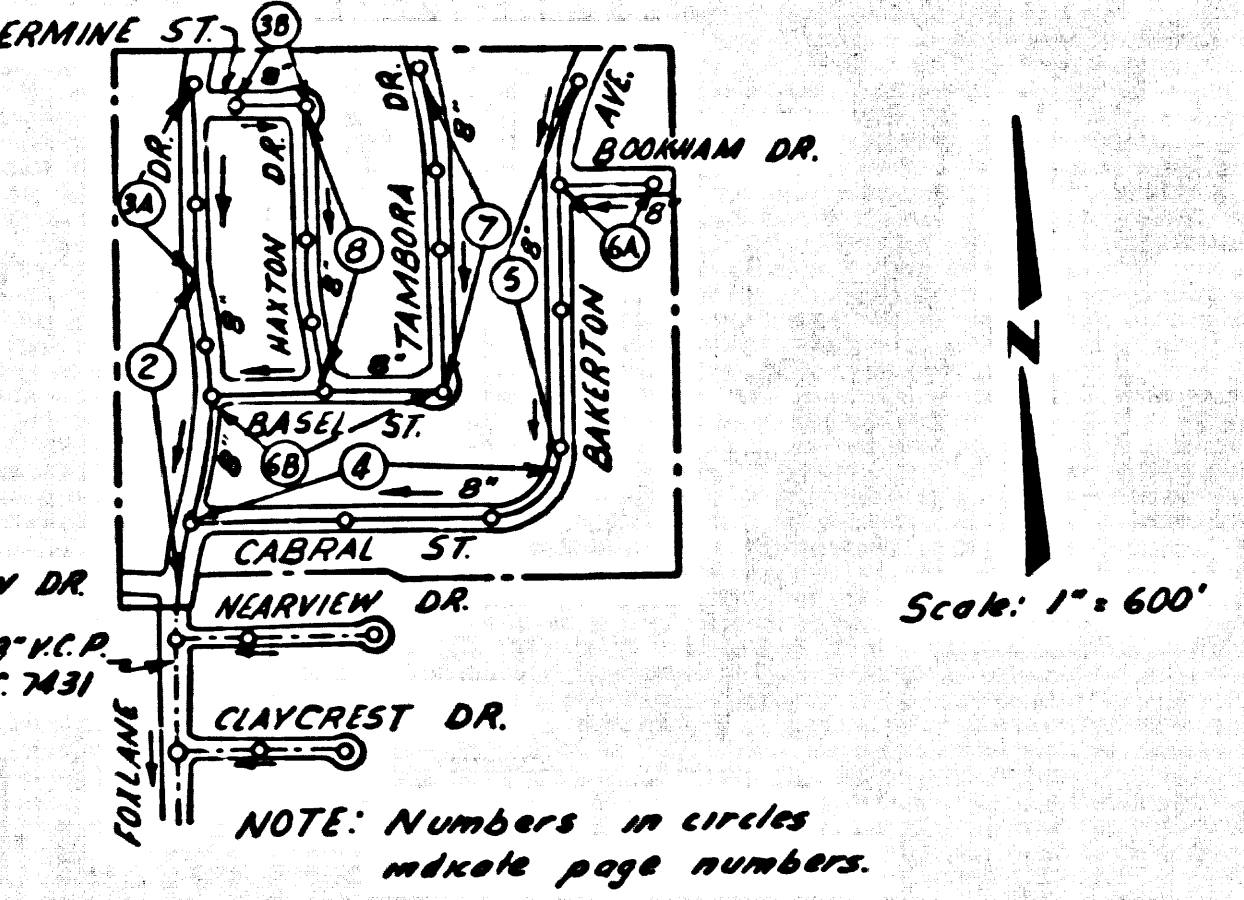
Any connection to the sewer system of County Sanitation District, provided directly or indirectly by the sanitary system on these plans, shall be considered a temporary connection until all area covered is covered to said district, at which time the connection shall become permanent. If for any reason the annexation to the district of any area covered hereunder is not completed, the proper lot in the district will be required to discontinue unless a contract is entered into with the district providing for the disposal of sewage from the area.

REVISIONS
 1. ADJUSTED GRADES BETWEEN FOLLOWING STATIONS:
 14+67.60 - 20+24.38, PG. 2
 20+24.38 - 25+05.00, PG. 3A
 1+00.00 - 2+49.00, PG. 3B
 4+60.00 - 11+10.76, PG. 4
 11+10.76 - 20+29.64, PG. 5
 1+10.00 - 2+60.00, PG. 6A
 1+00.00 - 3+68.95, PG. 6B
 2. CHANGED M.H. STA. 2+20.00 TO 2+49.00, PG. 3B
 APPROVED *Ralph Solof* DATE 7/14/66

PRIVATE ENGINEERS NOTICE TO CONTRACTORS
 THE EXISTENCE AND LOCATION OF ANY UNDERGROUND UTILITY OR STRUCTURE SHOWN ON THESE PLANS ARE OBTAINED BY A SEARCH OF THE AVAILABLE RECORDS TO THE BEST OF OUR KNOWLEDGE. THERE ARE NO EXISTING UTILITIES EXCEPT THOSE SHOWN ON THIS MAP.
 THE CONTRACTOR IS REQUIRED TO TAKE DUE PRECAUTIONARY MEASURES TO PROTECT THE UTILITY LINES SHOWN AND ANY OTHER LINES NOT OF RECORD OR NOT SHOWN ON THIS DRAWING.

County Sanitation Districts shall be notified prior to the following so that required inspection can be made (ThosesD71025 11)
 (1) Commencement of construction of manhole on District trunk sewer.
 (2) Breaking into existing manhole on District trunk sewer.
 (3) Core drilling District trunk sewer.
 (4) Construction of house connections to District trunk sewer.
 (5) Acceptance of the project.

REVISION
 Page 3A & 3B. Extend M.L. on Page 3B 34 Ft. & Move House Lateral From Foxlane Dr. to Ermine St.
 Approved: *Ralph Solof* Date 7-14-66



INDEX MAP
 P.C. 7699
 TRACT NO. 27493

ISSUE NO HOUSE CONNECTION PERMITS UNTIL P.C. 7431 HAS BEEN ACCEPTED BY THE COUNTY OF LOS ANGELES

NEWHALL BLDG. DIST. NO. 8.2

- NOTE:**
- PROVIDE STAKES ON THE PROPERTY LINE OR PROPERTY LINES PRODUCED AT RIGHT ANGLES TO THE SEWER LINE AT THE CENTER LINE OF EACH MANHOLE.
 - NO REPRESENTATIVE OF THE COUNTY ENGINEER WILL SURVEY OR LAY OUT ANY PORTION OF THE WORK.
 - THE PRIVATE ENGINEER SHALL FURNISH THE COUNTY ENGINEER WITH GRADE SHEETS AND STATIONING FOR ALL HOUSE LATERALS AND BRANCHES AND SHALL PROVIDE STAKES FOR THEM AT THEIR PROPER LOCATIONS WITH STATIONING PLAINLY MARKED. ALL HOUSE LATERALS SHALL BE CONSTRUCTED IN A STRAIGHT ALIGNMENT AT RIGHT ANGLES FROM THE MAIN LINE SEWER EXCEPT AS SHOWN ON THE PLANS. HOUSE LATERALS FROM CHIMNEYS SHALL HAVE AN ANGLE OF 180 DEGREES WITH THE MAIN LINE SEWER. ANY CHANGE IN ALIGNMENT SHALL BE INDICATED BY THE PRIVATE ENGINEER.
 - THE PRIVATE ENGINEER SHALL FURNISH THE HOUSE LATERAL DEPTH AT THE PROPERTY LINE BELOW THE TOP OF CURB ELEVATION FOR EACH HOUSE LATERAL ON THE GRADE SHEET.
 - NO REVISIONS SHALL BE MADE IN THESE PLANS WITHOUT THE APPROVAL OF THE COUNTY ENGINEER.
 - THE CONTRACTOR SHALL NOTIFY THE CONSTRUCTION DIVISION BY TELEPHONE, MADISON 9-4747, EXT. 8158, AT LEAST TWENTY-FOUR HOURS BEFORE STARTING ANY WORK UNDER THIS CONTRACT.
 - MANHOLES SHALL BE BRICK SEWER STRUCTURES PER S-2. PRECAST CONCRETE MANHOLES PER S-6 OR S-6 MAY BE USED AS AN ALTERNATE IN LOCATIONS APPROVED BY THE COUNTY ENGINEER.
 - USE STANDARD MANHOLE FRAMES AND COVERS, S-15, EXCEPT AS NOTED.
 - MANHOLE TOPS IN UNIMPROVED RIGHTS-OF-WAY TO BE SIX INCHES ABOVE FINISHED GRADE.
 - USE 12" DIA. DRAIN PIPE. ALL PIPE IS STANDARD DEPTH EXCEPT AS NOTED.
 - USE 6" DIA. MECHANICAL COMPRESSION JOINTS FOR ALL V.C.P. JOINTS PER SPEC., SECS. 24 & 41.
 - WHERE OVER-GROUND WATER IS ENCOUNTERED DURING THE CONSTRUCTION OF THE SEWER, THE V.C.P. JOINTS SHALL BE OF JOINT COMPOUND PER SPEC., SECS. 33 & 36, OR MECHANICAL COMPRESSION JOINTS PER SPEC., SEC. 34.
 - IF A POWER POLE IS WITHIN THREE FEET OF THE SEWER, THE SEWER SHALL BE ENCASED, PER S-23 CASE III, TWO FEET ON EACH SIDE FROM THE POINT OF INTERFERENCE.
 - IF DURING THE COURSE OF CONSTRUCTION IT IS DETERMINED THAT THERE IS LESS THAN FOUR FEET OF COVER OVER THE TOP OF A MAIN LINE OR HOUSE LATERAL V.C.P. SEWER WHICH IS NOT INDICATED ON THE PLANS, THE PIPE SHALL BE ENCASED PER S-23 CASE III, UNLESS OTHERWISE APPROVED BY THE COUNTY ENGINEER.
 - HOUSE LATERALS TO BE CONSTRUCTED WITHIN AREAS AT PROPERTY LINE... FEET BELOW CURB EXCEPT AS NOTED.
 - RESURFACE ALL TRENCHES WITHIN PAVED AREAS TO MEET L.A. COUNTY ROAD DEPT. OR SANITATION DISTRICT REQUIREMENTS IN ACCORDANCE WITH PERMITS.
 - FOR ALLOWABLE LEAKAGE TEST USE FORMULA NO. 1, PER SPEC., SEC. 54.
 - ALL STATE AND LOCAL TRINCH SAFETY ORDINANCES WILL BE RIGIDLY ENFORCED.
 - SEWER PIPE LENGTHS SHALL NOT EXCEED 30 FEET WHERE SEWER CONTAINS A RADIUS IS 180" OR LESS.
 - CONSTRUCTION IN FILLED AREAS
 (a) An acceptable certification of compaction test results shall be submitted to the Construction Division prior to use to be made in accordance with A.S.T.M. Standard Method of Test D-698-67.
 (b) No construction is permitted in filled areas where the relative density of compaction is less than 90%.
 (c) If the relative density of compaction is less than 90%, all main line and house lateral manholes shall have a 3' diameter of summary and a 4' diameter for 8' x 8' x 8' and 11' x 11' x 11' respectively.
 (d) If the relative density of compaction is 90% or greater, the special provisions in (c) are not required.

COLLECT CHARGES AS INDICATED
Ralph Solof

NO CONNECTIONS FOR THE DISPOSAL OF INDUSTRIAL WASTES SHALL BE MADE TO SEWERS SHOWN ON THESE DRAWINGS WITHOUT WRITTEN PERMISSION FROM THE CHIEF ENGINEER AND GENERAL MANAGER OF THE COUNTY SANITATION DISTRICTS.

PROFILE ALIGNMENT AND GRADE OF
SANITARY SEWERS PAGE 1

TRACT NO. 27493
 PRIVATE CONTRACT NO. 7699

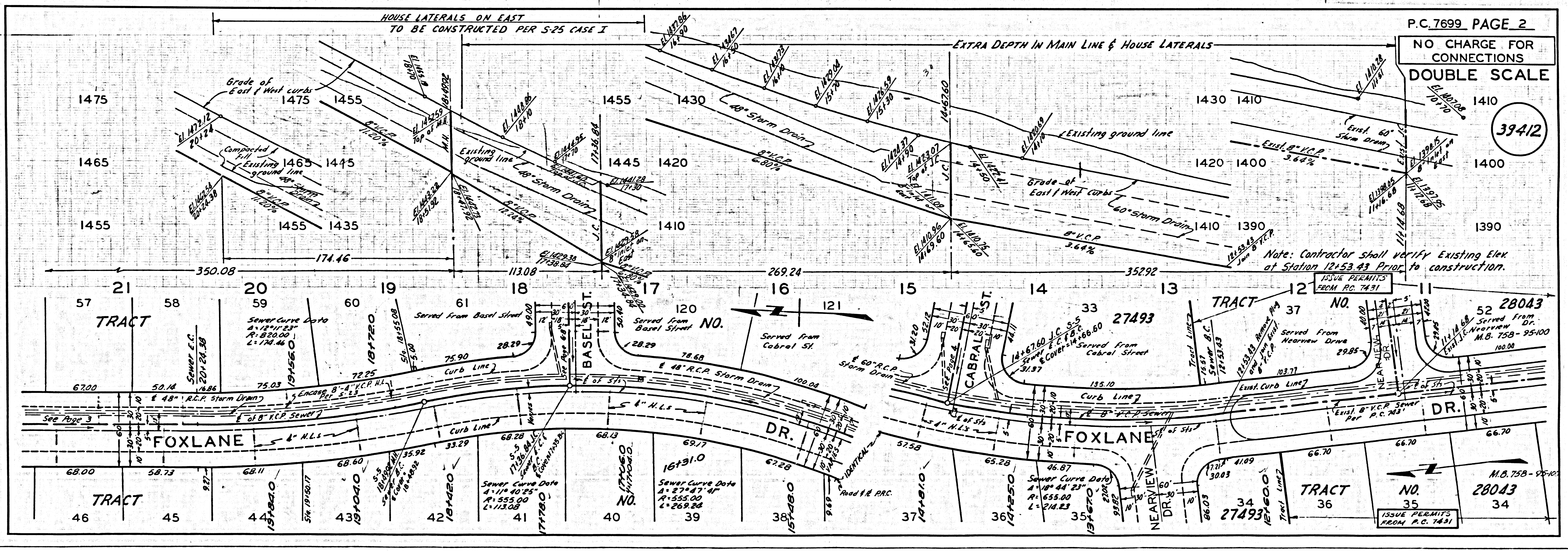
W.S. 62
 4 SHEETS, 2 PAGES
 SCALE: VERT. 1"=4'
 HORIZ. 1"=40'
 JULY, 1966
 PREPARED IN THE OFFICES OF
ANDEL ENGINEERING CO.
E.S. Andel, Jr.
 REG. C. E. NO. 70537

NOTE:
 GRADES TO WHICH THIS IMPROVEMENT IS TO BE CONSTRUCTED ARE SHOWN ON PLANS AND PROFILES. GRADE POINTS FOR TOP OF CURB, CENTER LINE OF STREET, OR CENTER LINE OF ALLEY ARE SHOWN BY CIRCLES ON PROFILES. AT ALL POINTS BETWEEN DESIGNATED POINTS THE GRADE SHALL BE ESTABLISHED SO AS TO CONFORM TO A STRAIGHT LINE DRAWN BETWEEN SAID DESIGNATED POINTS. REVISIONS ARE IN RED INK. ALL CHANGES TO THESE PLANS SHALL BE MADE BY THE COUNTY ENGINEER. THIS DRAWING AND THE DATA HEREON ARE HEREBY MADE A PART OF THE SPECIFICATIONS AS REVISED. WORK SHALL BE CONDUCTED ACCORDING TO STANDARD SPECIFICATIONS DATED JULY 1966, ON FILE IN THE OFFICE OF THE COUNTY ENGINEER AND SHALL BE PROSECUTED ONLY IN THE PRESENCE OF THE COUNTY ENGINEER. BEFORE WORK CAN BE STARTED, THE CONTRACTOR MUST OBTAIN A PERMIT TO EXCAVATE BY COUNTY STREET FROM THE L.A. COUNTY ROAD DEPT., DISTRICT OFFICE NO. 12+53.49 AND PAY A FEE TO THE COUNTY ENGINEER, ROOM 300, COUNTY ENGINEER'S BUILDING, CONSTRUCTION INSPECTION AND RECORD PLANE. APPROVAL OF THIS PLAN BY THE COUNTY OF LOS ANGELES DOES NOT CONSTITUTE A REPRESENTATION AS TO THE ACCURACY OF THE LOCATION OF OR THE EXISTENCE OR NON-EXISTENCE OF ANY UNDERGROUND UTILITY PIPE, OR STRUCTURE WITHIN THE LIMITS OF THE PROJECT. THIS NOTE APPLIES TO ALL PAGES.
 IF WORK IS TO BE DONE IN A STATE HIGHWAY, A PERMIT MUST BE OBTAINED FROM THE STATE OF CALIFORNIA, DIVISION OF HIGHWAYS, THE SOUTH SPRING STREET, LOS ANGELES, CALIFORNIA.

COUNTY OF LOS ANGELES, CALIFORNIA
 JOHN A. LAMBIE, COUNTY ENGINEER J. D. PARKURST, CHIEF ENGINEER
 CO. SAN. DIST. NO. 8.2
 APPROVED BY *Ralph Solof* SANITATION ENGINEER APPROVED BY *J.D. Parkurst* OFFICE ENGINEER

SUBMITTED BY *John D. Parkurst* REGIONAL ENGINEER
 CHECKED BY *Ralph Solof* DATE 7/14/66 REG. C. E. NO. 12906

J.N. 0250.02



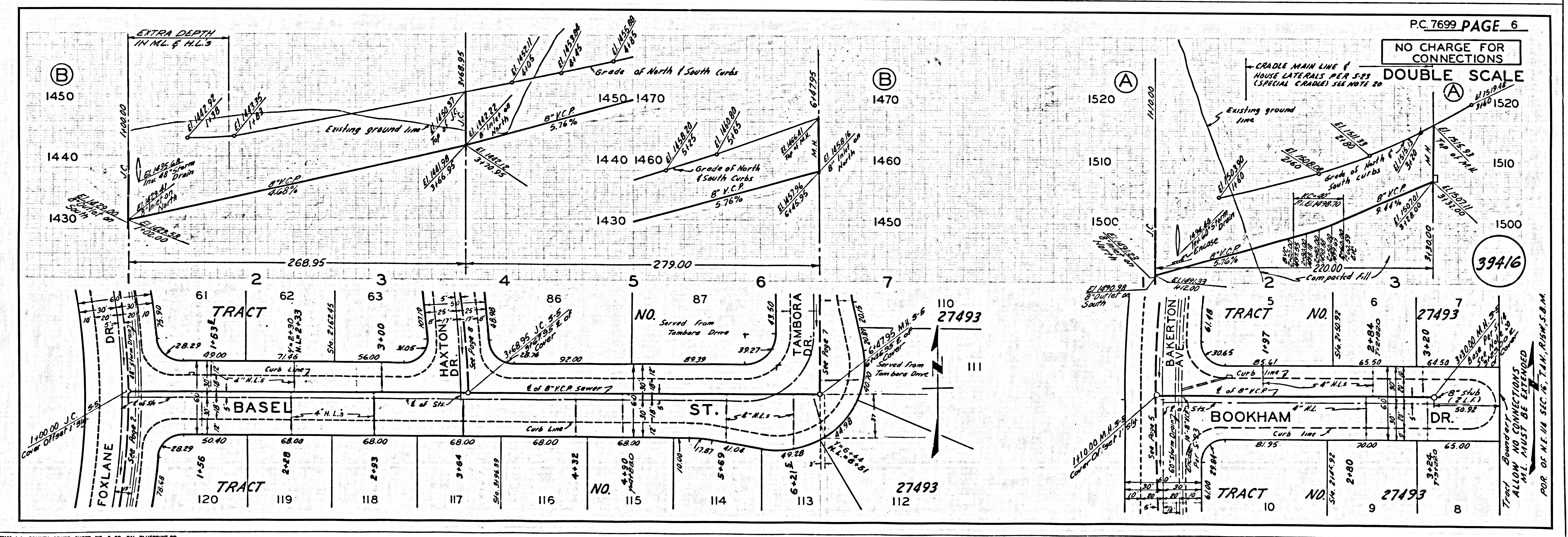
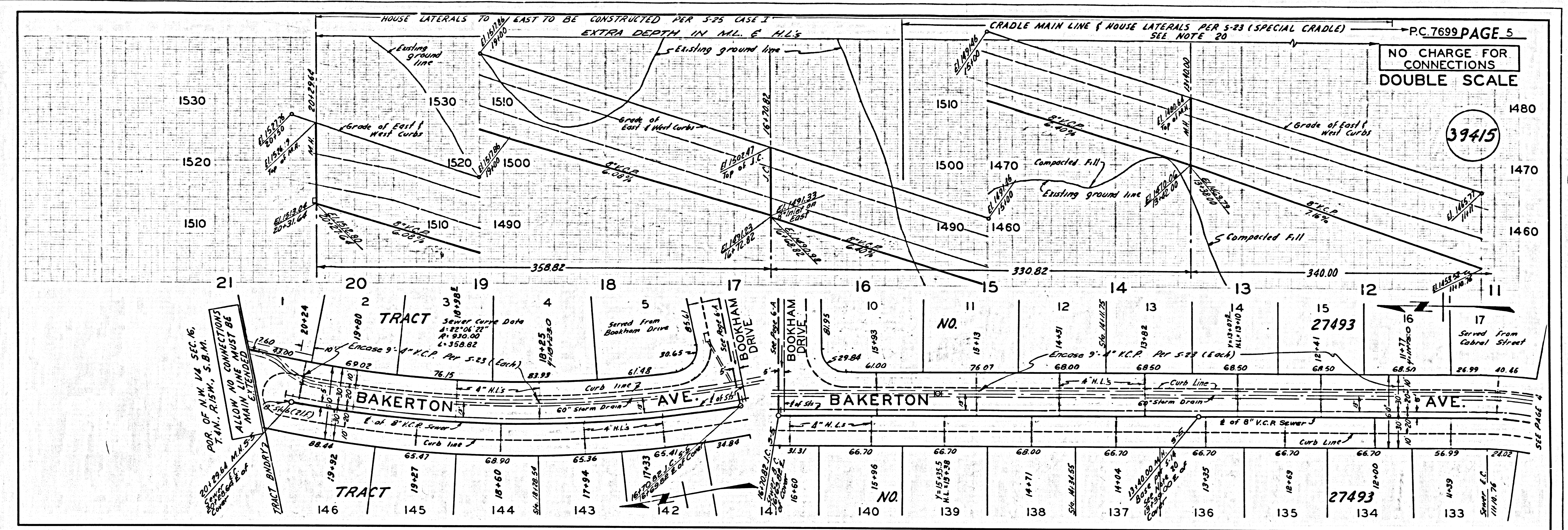
P.C. 7699 PAGE 2

NO CHARGE FOR CONNECTIONS
 DOUBLE SCALE

39412

ISSUE PERMITS FROM P.C. 7431

1170 Extra Depth



1180 Extra Depth

