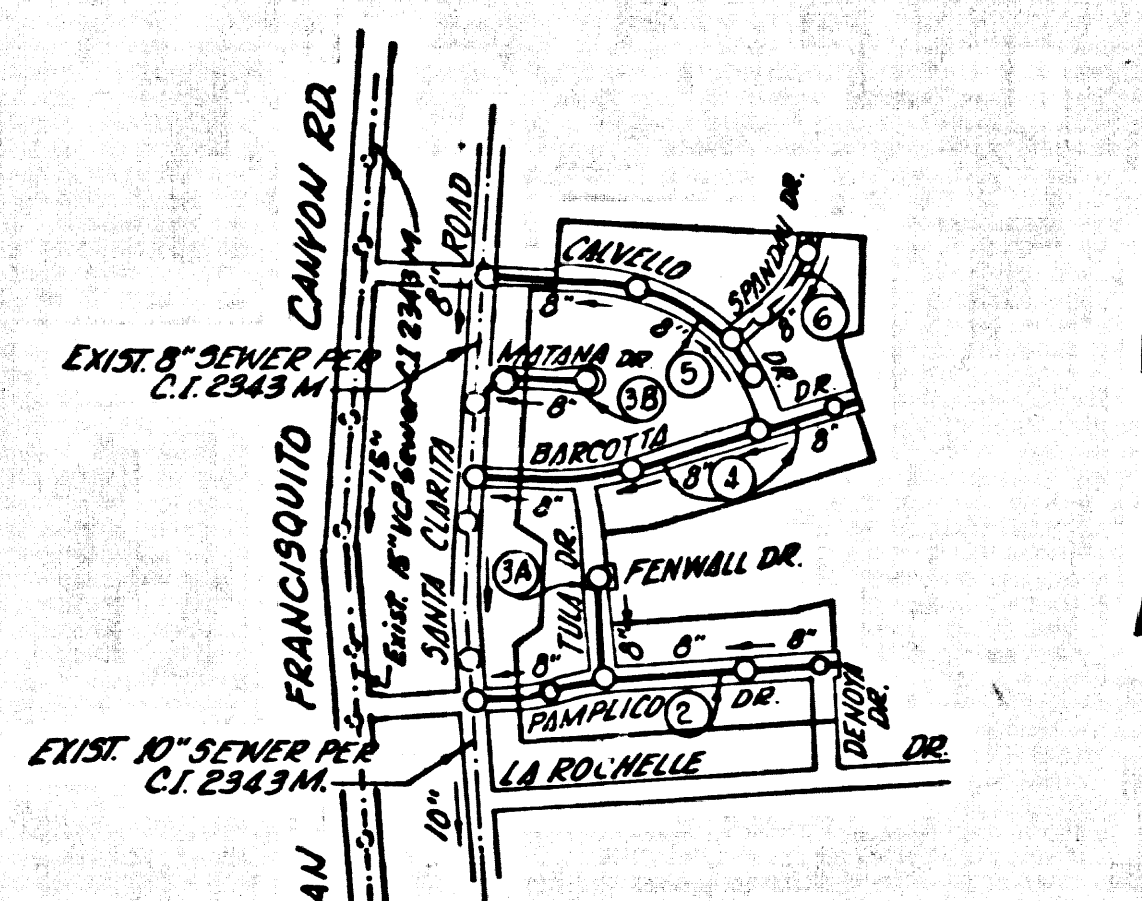


B.M. SL 625 ELEV. 1283.170  
 LT NEAR O.C.R. AT S' ELY CORNER OF  
 SAN FRANCISCO C.M. PD. (SERV. 50)  
 50' S. SAN FRANCISCO DR. 43' S' ELY 1878  
 OF INT. STAMPED & M.  
 NEWHALL QUAD. 19 58



INDEX MAP  
 TRACT 25175  
 P.C. 7703  
 SCALE 1"=600'

DOUBLE SCALE  
 NEWHALL BLDG. DIST. NO. 8.2

PROFILE ALIGNMENT AND GRADE OF  
 SANITARY SEWERS PAGE 1  
 CONSTRUCTED IN  
 TRACT NO 25175 39775

PRIVATE CONTRACT NO. 7703

W.S. 62  
 3 SHEETS, 6 PAGES  
 SCALE 1"=8' AUGUST, 1966

PREPARED BY THE OFFICES OF  
**JENNINGS ENGINEERING CO.**  
 1100 S. BEVERLY DRIVE, LOS ANGELES, CALIFORNIA  
 REG. C. E. NO. 7858

NOTES:  
 1. PROFILE STAKES ON THE PROPERTY LINE OR PROPERTY LINES PRODUCED AT RIGHT ANGLES TO THE SEWER LINE AT THE CENTER LINE OF EACH MANHOLE.  
 2. NO REPRESENTATIVE OF THE COUNTY ENGINEER WILL SURVEY OR LAY OUT ANY PORTION OF THE WORK.  
 3. THE PRIVATE ENGINEER SHALL FURNISH THE COUNTY ENGINEER WITH GRADE SHEETS AND STATIONING FOR ALL HOUSE LATERALS AND T-BRANCHES AND SHALL PROVIDE STAKES FOR THEM AT THESE PROPER LOCATIONS WITH STATIONING PLAINLY MARKED. ALL HOUSE LATERALS SHALL BE CONSTRUCTED IN A STAGHOUT ALIGNMENT AT RIGHT ANGLES FROM THE MAIN LINE SEWER EXCEPT AS SHOWN ON THE PLANS. HOUSE LATERALS FROM CHIMNEYS SHALL NOT HAVE AN ANGLE OF LESS THAN 45° WITH THE MAIN LINE SEWER. ANY CHANGE IN ALIGNMENT SHALL BE REQUESTED BY WRITING BY THE PRIVATE ENGINEER.  
 4. THE PRIVATE ENGINEER SHALL FURNISH THE HOUSE LATERAL BIRTHS AT THE PROPERTY LINE SHOWING THE TOP OF CURB ELEVATION FOR EACH HOUSE LATERAL ON THE GRADE SHEET.  
 5. NO REVISIONS SHALL BE MADE IN THESE PLANS WITHOUT THE APPROVAL OF THE COUNTY ENGINEER.  
 6. THE CONTRACTOR SHALL NOTIFY THE CONSTRUCTION DIVISION BY TELEPHONE, MADISON 9-4747, EXT. 8151, AT LEAST TWENTY-FOUR HOURS BEFORE STARTING ANY WORK UNDER THE CONTRACT.  
 7. MANHOLES SHALL BE BRICK SEWER STRUCTURES PER S-3. PRECAST CONCRETE MANHOLES PER S-5 OR S-6 MAY BE USED AS AN ALTERNATE IN LOCATIONS APPROVED BY THE COUNTY ENGINEER.  
 8. USE STANDARD MANHOLE FRAMES AND COVERS, S-15.  
 9. MANHOLES SHALL BE CONSTRUCTED TO A DEPTH OF 10 FEET UNLESS OTHERWISE SPECIFIED.  
 10. USE EXTRA STRENGTH PIPE. ALL PIPE IS STANDARD DUCT EXCEPT AS NOTED.  
 11. USE MECHANICAL COMPRESSION JOINTS FOR ALL V.C.P. JOINTS PER SPECS. SECS. 34 & 46, 44.9.  
 12. WHERE PIPE GROUND WATER IS ENCOUNTERED DURING THE CONSTRUCTION OF THE SEWERS, THE V.C.P. JOINTS SHALL BE OF JOINT COMPOUND PER SPECS. SECS. 34 & 46, OR MECHANICAL COMPRESSION JOINTS PER SPECS. SEC. 34.  
 13. IF A POWER POLE IS WITHIN THREE FEET OF THE SEWER, THE SEWER SHALL BE ENCASED, PER S-23, TWO FEET ON EITHER SIDE FROM THE POINT OF INTERFERENCE.  
 14. DURING THE COURSE OF CONSTRUCTION IT IS DETERMINED THAT THERE IS LESS THAN FOUR FEET OF COVER OVER THE TOP OF A MAIN LINE OR HOUSE LATERAL V.C.P. SEWER WHICH IS NOT INDICATED ON THE PLANS, THE PIPE SHALL BE ENCASED PER S-23. HOUSE LATERALS TO BE CONSTRUCTED WITH INVERTS AT PROPERTY LINE... FIRST BELOW CURB GRADE EXCEPT AS NOTED.  
 15. RESURFACE ALL TRENCHES WITHIN FIVE FEET OF THE L.A. COUNTY ROAD DEPT. OR CALIFORNIA STATE HIGHWAY REQUIREMENTS IN ACCORDANCE WITH PERMITS.  
 16. FOR HIGHWAY REPAIRS USE FORMS NO. 1, 2, 3, 4, 5, 6, 7, 8, 9, 10, 11, 12, 13, 14, 15, 16, 17, 18, 19, 20, 21, 22, 23, 24, 25, 26, 27, 28, 29, 30, 31, 32, 33, 34, 35, 36, 37, 38, 39, 40, 41, 42, 43, 44, 45, 46, 47, 48, 49, 50, 51, 52, 53, 54, 55, 56, 57, 58, 59, 60, 61, 62, 63, 64, 65, 66, 67, 68, 69, 70, 71, 72, 73, 74, 75, 76, 77, 78, 79, 80, 81, 82, 83, 84, 85, 86, 87, 88, 89, 90, 91, 92, 93, 94, 95, 96, 97, 98, 99, 100.  
 17. ALL STATE AND LOCAL TRENCH SAFETY ORDERS WILL BE RIGIDLY ENFORCED.  
 18. CONSTRUCTION IN FILLED AREAS  
 19. AN ACCEPTABLE CERTIFICATION OF COMPACTION TEST RESULTS SHALL BE SUBMITTED TO THE CONSTRUCTION DIVISION. COMPACTION TESTS ARE TO BE MADE IN ACCORDANCE WITH ASTM STANDARD METHOD OF TEST D698-47T.  
 20. NO CONSTRUCTION IS PERMITTED IN FILLED AREAS WHERE THE RELATIVE DENSITY OF COMPACTION IS LESS THAN 80%.  
 21. IF THE RELATIVE DENSITY OF COMPACTION IS LESS THAN 80% ALL MAIN LINE AND HOUSE LATERALS SHALL BE CRADLED PER S-23(SPECIAL) OR HAVE A SPECIAL BASE COURSE PER S-21. SPECIAL MANHOLE BASES PER S-14 ARE REQUIRED.  
 22. IF THE RELATIVE DENSITY OF COMPACTION IS 90% OR GREATER, THE SPECIAL PROVISIONS INCLUDE NOT REQUIRED.  
 GRADES TO WHICH THE IMPROVEMENT IS TO BE CONSTRUCTED ARE SHOWN ON PLANS AND PROFILE. GRADE POINTS FOR TOP OF CURB, CENTER LINE OF STREETS, OR CENTER LINE OF ALLEYS ARE SHOWN BY CIRCLES ON PROFILES. AT ALL POINTS AT WHICH DESIGNATED POINTS THE GRADE SHALL BE ESTABLISHED SO AS TO CONFORM TO A STRAIGHT LINE DRAWN BETWEEN SAID DESIGNATED POINTS. STATIONING ARE IN FEET ABOVE U.S.C. & G.S. SEA LEVEL DATUM OF 1929.  
 THE DRAWING AND THE DATA HEREON ARE HEREBY MADE A PART OF THE SPECIFICATIONS.  
 BEFORE WORK CAN BE STARTED, THE CONTRACTOR MUST OBTAIN A PERMIT TO EXCAVATE IN COUNTY STREETS FROM THE L.A. COUNTY ROAD DEPT., DISTRICT OFFICE NO. 3, AND PAY A FEE TO THE COUNTY ENGINEER, ROOM 300, COUNTY ENGINEERING BUILDING, 1100 S. BEVERLY DRIVE, LOS ANGELES, CALIFORNIA. REGIONAL OFFICE, SUFFICIENT TO COVER THE COST OF CONSTRUCTION INSPECTION AND SECOND PLANS.  
 APPROVAL OF THIS PLAN BY THE COUNTY OF LOS ANGELES DOES NOT CONSTITUTE A REPRESENTATION AS TO THE ACCURACY OF THE LOCATION OF OR THE EXISTENCE OR NON-EXISTENCE OF ANY UNDERGROUND UTILITY PIPE, OR STRUCTURE WITHIN THE LIMITS OF THE PROJECT. THIS NOTE APPLIES TO ALL PAGES.  
 IF WORK IS TO BE DONE BY A STATE HIGHWAY, A PERMIT MUST BE OBTAINED FROM THE STATE OF CALIFORNIA, DIVISION OF HIGHWAYS, THE SOUTH SPRING STREET, LOS ANGELES, CALIFORNIA.

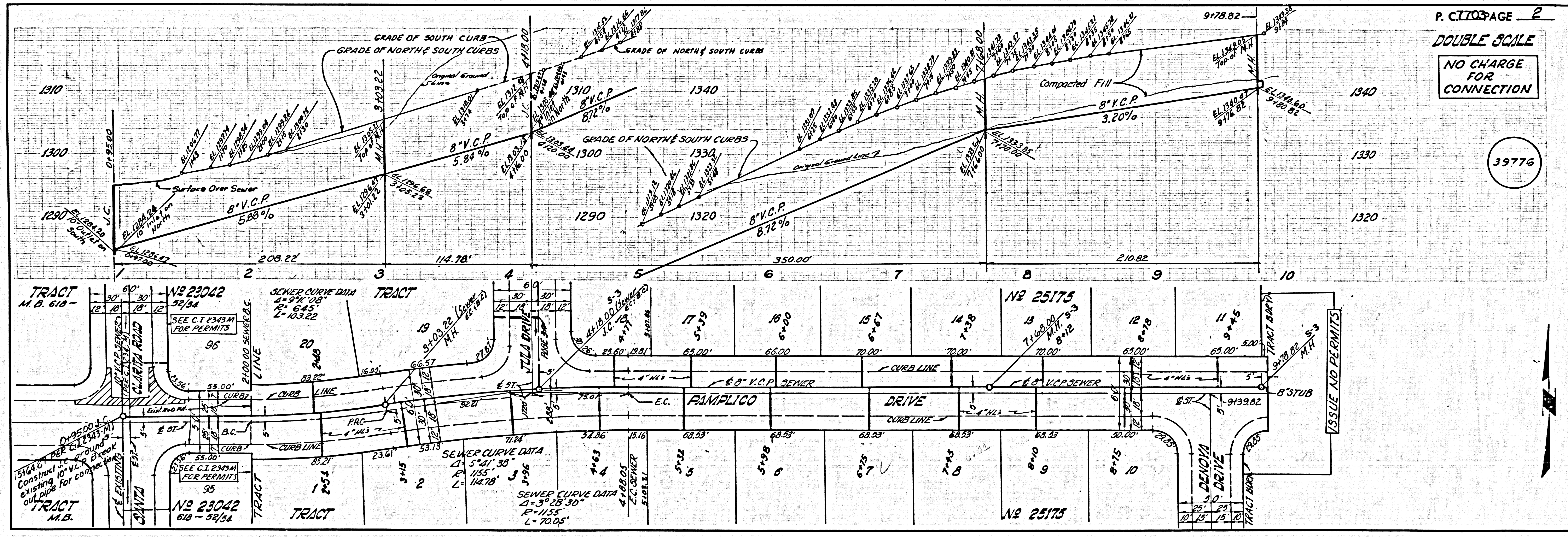
REVISION  
 1. Relocated Storm Drain from Malana Dr. (Page 3B)  
 2. Revised H.L.'s on Calvello Dr. (Page 5)  
 3. Revised Mainline in Malana Dr. (Page 9B)  
 4. Revised grade of Storm Drain (Page 4)  
 APPROVED: *Ralph Schafke* DATE: 11/26/66  
 R.C.E. 13906

NO CONNECTIONS FOR THE DISPOSAL OF MEDICAL WASTES SHALL BE MADE TO SEWERS EXCEPT BY THESE DRAWINGS WITHOUT WRITTEN PERMISSION FROM THE CHIEF ENGINEER AND GENERAL MANAGER OF THE COUNTY SANITATION DISTRICTS.

COLLECT CHARGES  
 AS INDICATED  
*Ralph Schafke*

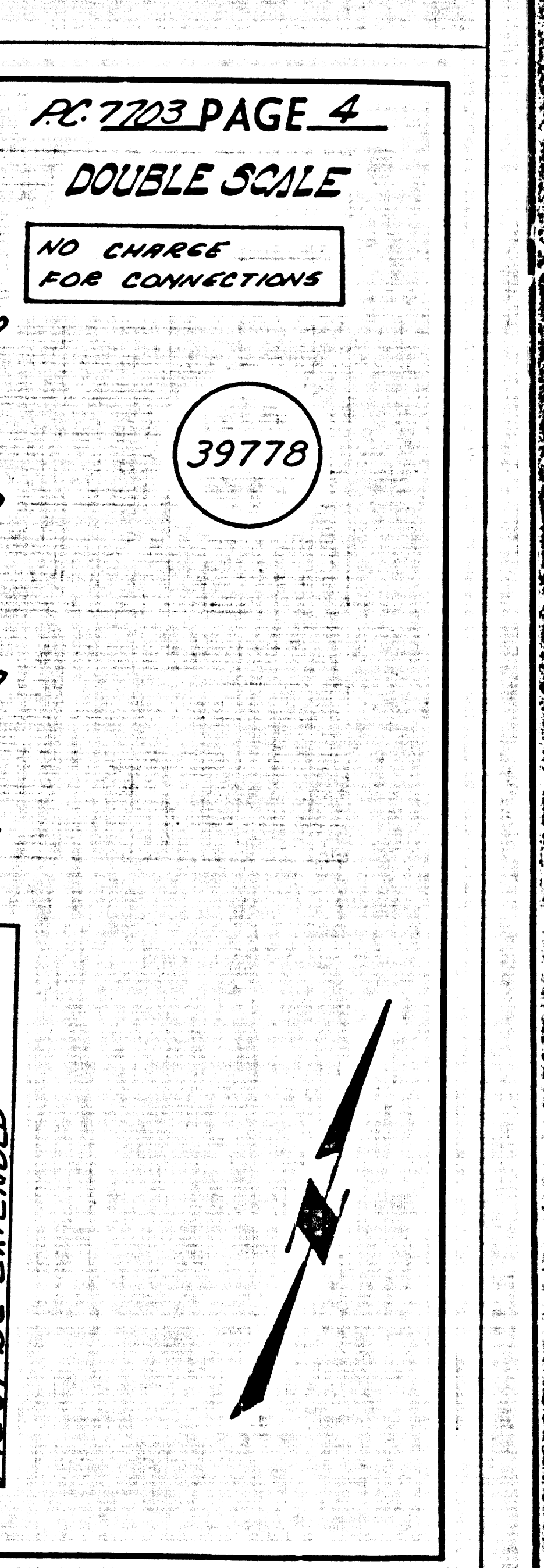
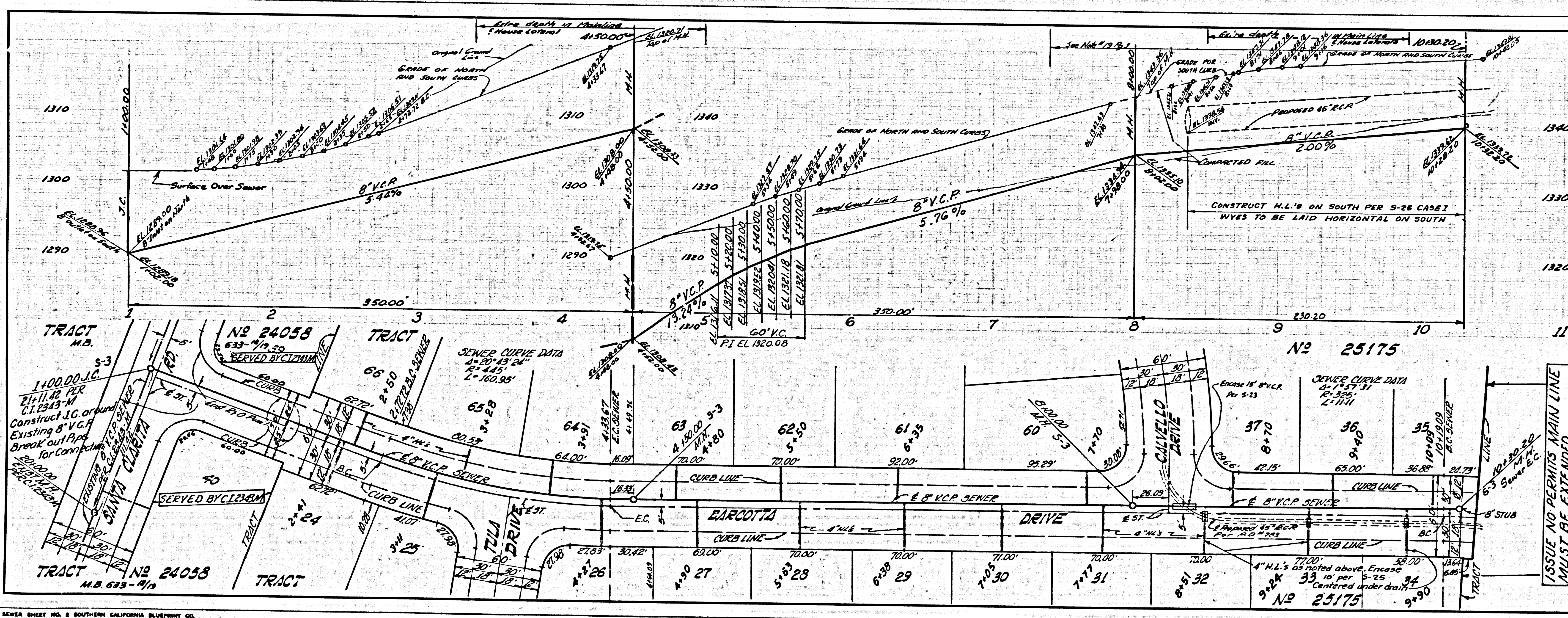
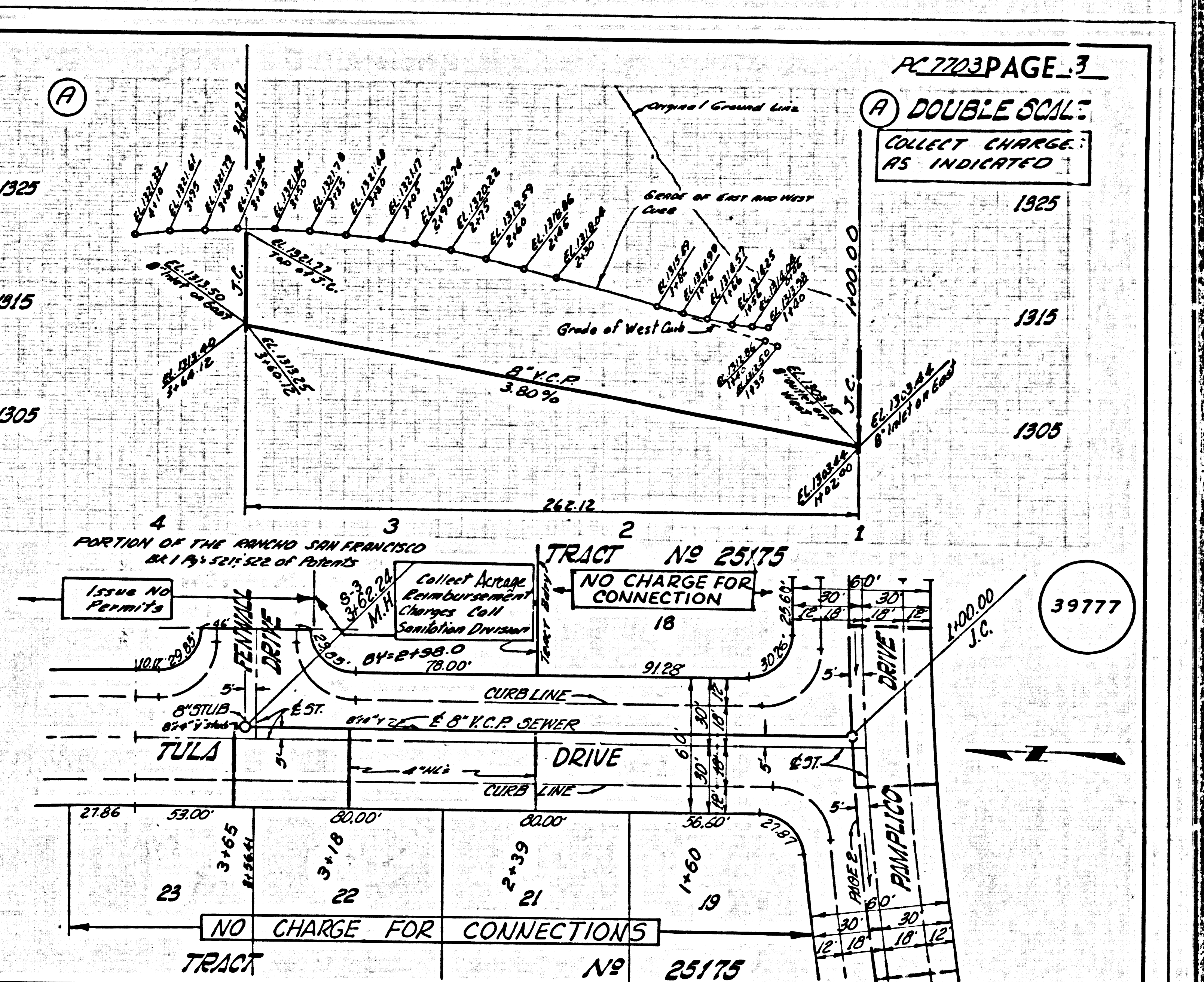
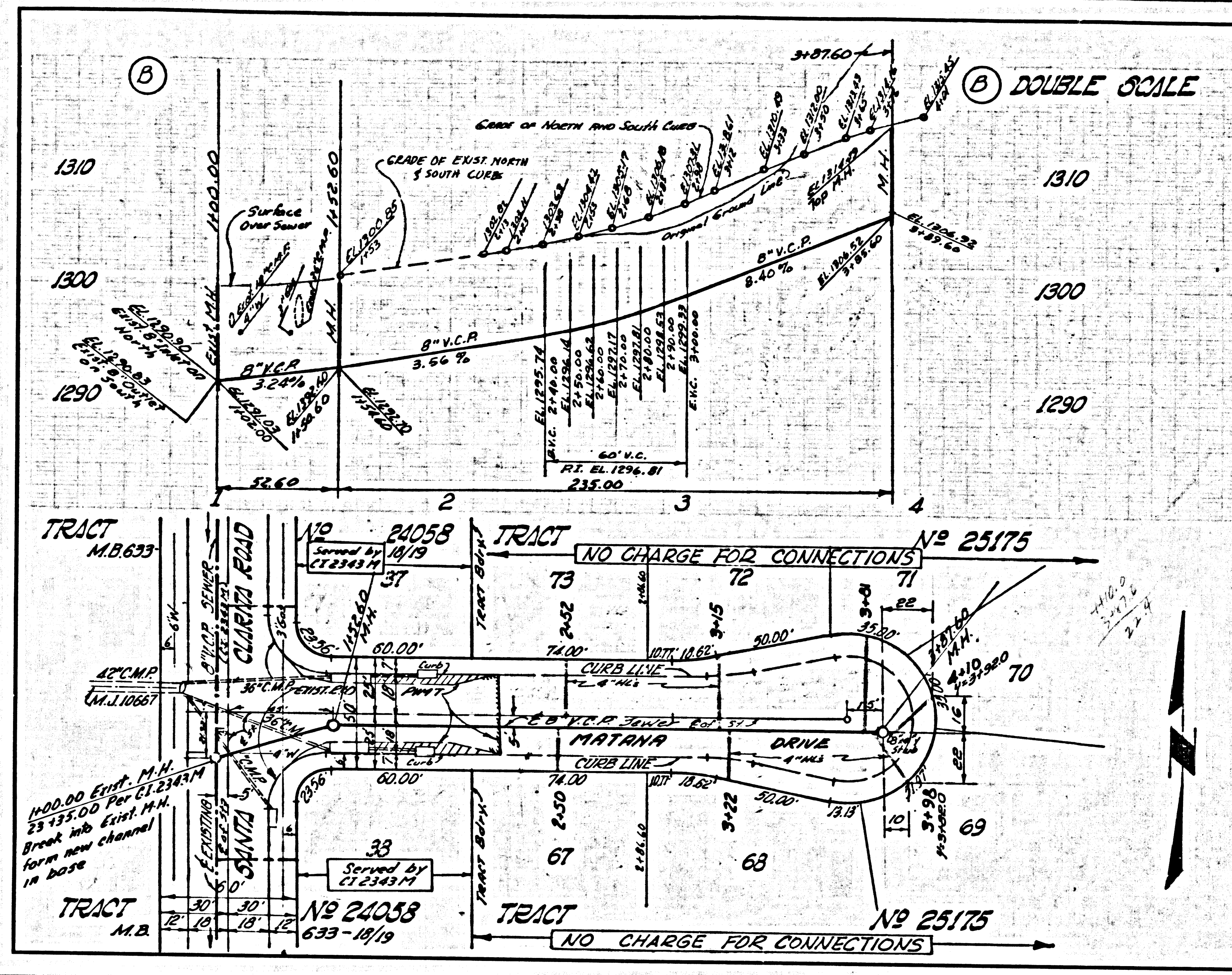
COUNTY OF LOS ANGELES, CALIFORNIA  
 JOHN A. LAMBIE, COUNTY ENGINEER  
 APPROVED BY: *Ralph Schafke*  
 ANTELOPE VALLEY REGIONAL ENGINEER  
 CHECKED BY: *Ralph Schafke*  
 REG. C.E. NO. 13926

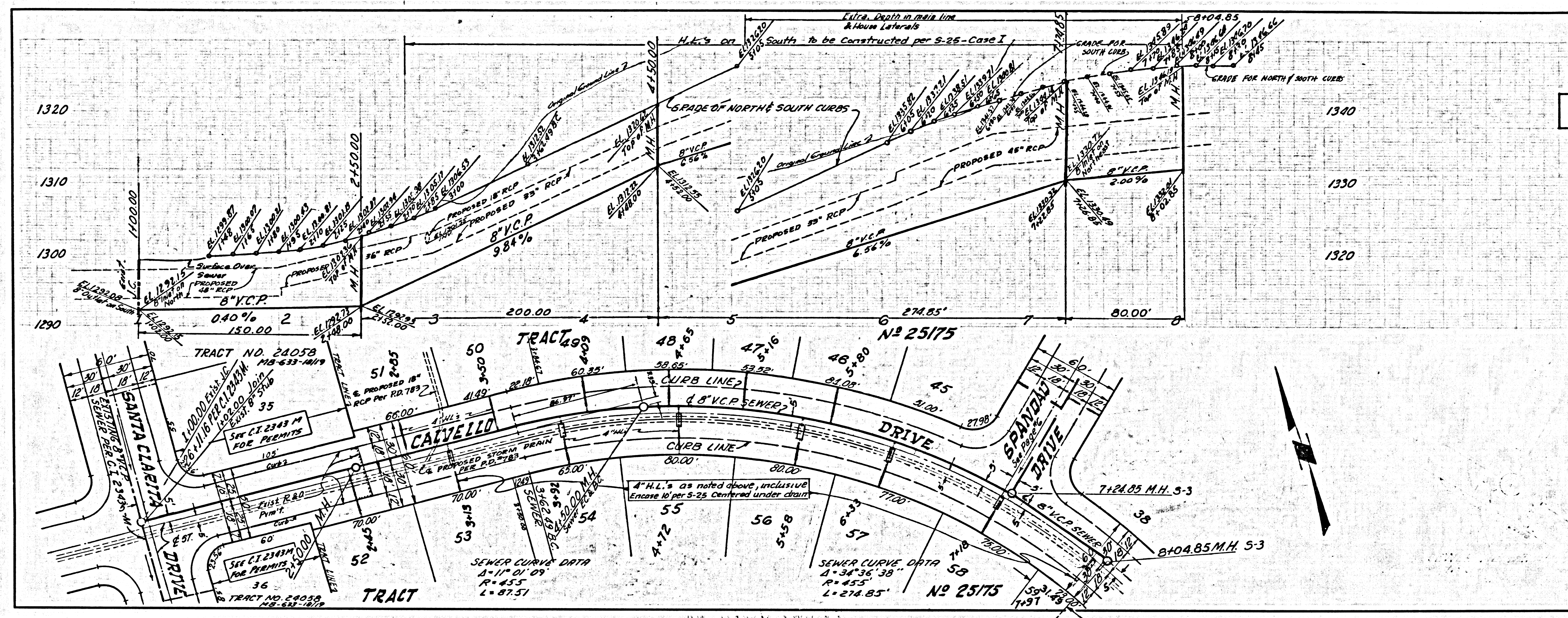
J.N.0250.02



P. C. 7703 PAGE 2  
 DOUBLE SCALE  
 NO CHARGE FOR CONNECTION

39776

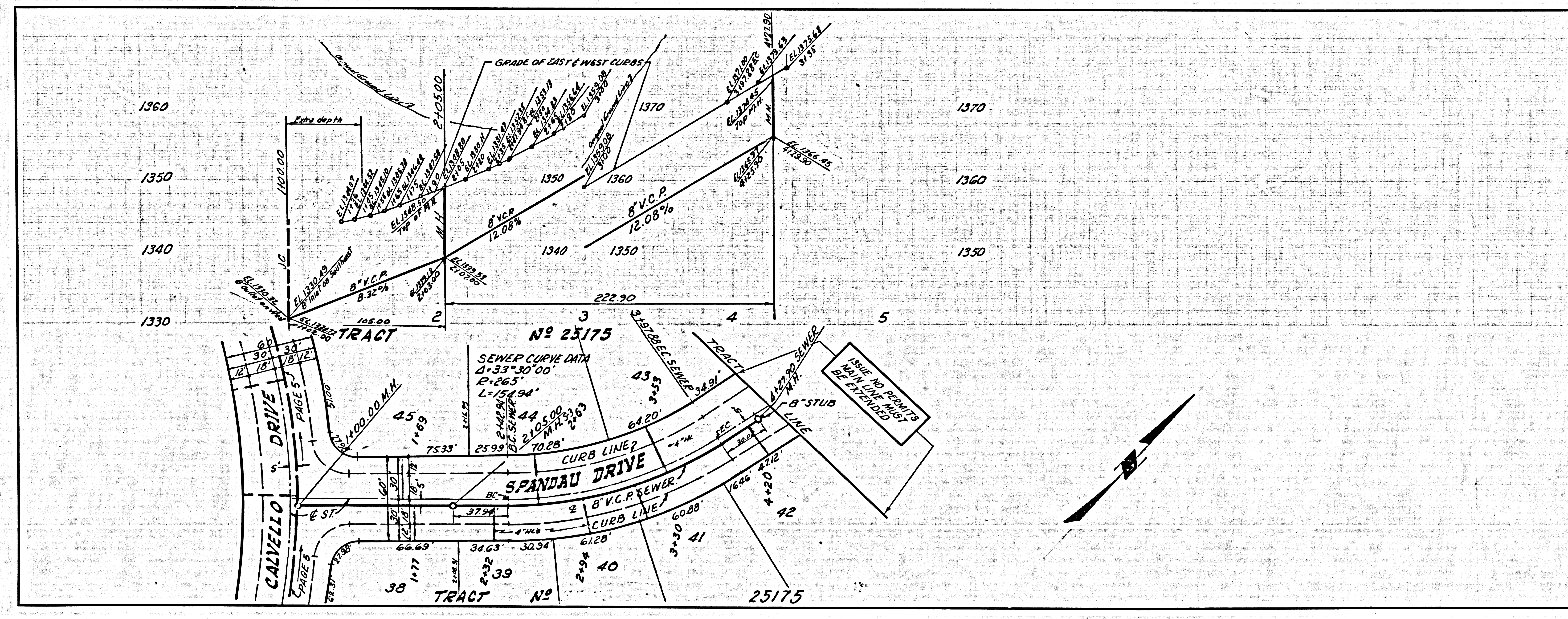




DOUBLE SCALE

NO CHARGE FOR CONNECTIONS

39779



DOUBLE SCALE

NO CHARGE FOR CONNECTIONS

39780