

B.M. #62-23 ELEV 287.174 C.E.F.B. 2715-144
 Santa Monica Blvd. & Fairfax Ave. N.W. Cor.
 76.5' W of Fairfax Ave. & 22' N of Santa Monica Blvd.
 Std. No. in H.H.

WEST HOLLYWOOD BUILDING DISTRICT No. 9

APPROVAL OF THIS PLAN BY THE COUNTY OF LOS ANGELES DOES NOT CONSTITUTE A REPRESENTATION AS TO THE ACCURACY OF THE LOCATION OF OR THE EXISTENCE OR NON-EXISTENCE OF ANY UNDERGROUND UTILITY PIPE OR STRUCTURE WITHIN THE LIMITS OF THIS PROJECT.
 NO REVISIONS SHALL BE MADE IN THIS PLAN WITHOUT THE APPROVAL OF THE COUNTY ENGINEER.
 FLOW IN EXISTING HOUSE LATERALS AND MAIN LINE SEWERS SHALL BE MAINTAINED UNLESS OTHERWISE NOTED.
 THE STATE HIGHWAY ENCROACHMENT PERMIT SHALL GOVERN CONCERNING THE METHOD OF SEWER CONSTRUCTION IN SANTA MONICA BLVD. ALL TUNNELING SHALL BE DONE PER SEC. 43 OF STANDARD SEWER SPECIFICATIONS. SEE NOTE ON PAGE 4 FOR SPECIAL CONSTRUCTION AND BACKFILL REQUIREMENTS.

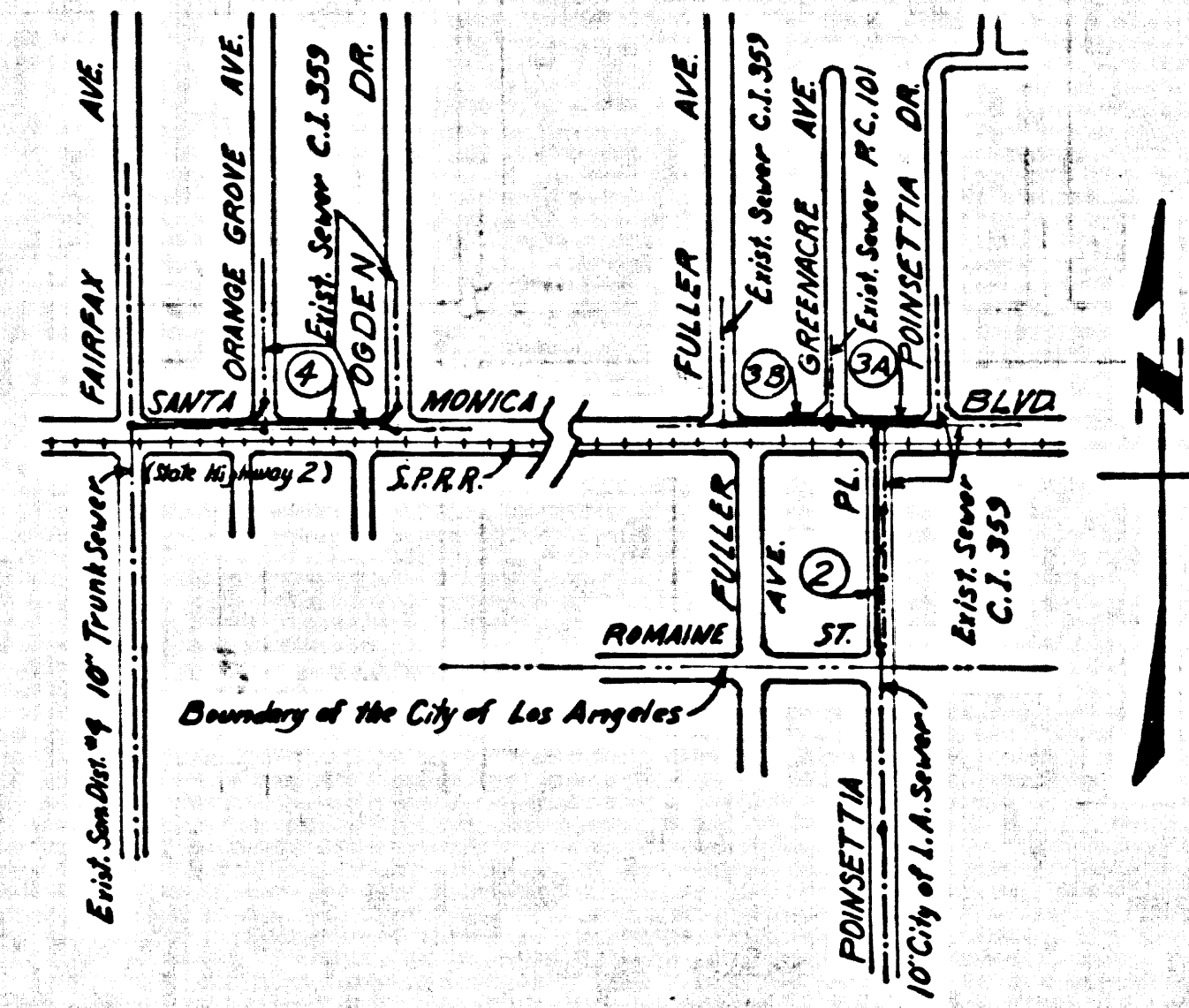
USE EXTRA STRENGTH PIPE. ALL PIPE IS STANDARD DEPTH EXCEPT AS NOTED.
 USE UNUSUAL COMPENSATION POINTS FOR ALL VERTICAL CURVE SEWERS PER METHODS IN 804 OF STD. SPEC.
 ALL STRUCTURES SHALL BE BRICK MANHOLES PER STANDARD PLAN 8-2.
 USE STANDARD MANHOLE FRAMES AND COVERS PER STANDARD PLAN 8-2.
 USE FORMULA NO. 2, SEC. 101 OF SPECIFICATIONS TO COMPUTE ALLOWABLE HEADRAISE.
 EXISTING HOUSE LATERALS WITH INVERTS AT PROPERTY LINE 9 FEET BELOW CURB GRADE, OR GRADE OF CENTER LINE OF STREET, EXCEPT AS NOTED.
 FIGURES IN CIRCLES AT ENDS OF HOUSE LATERALS INDICATE DEPTH BELOW CURB GRADE, OR GRADE OF CENTER LINE OF STREET.
 FIGURES IN CIRCLES AT ENDS OF HOUSE LATERALS INDICATE HOUSE LATERALS SHALL BE CONSTRUCTED WITH 1/4" RISE PER FOOT TO PROPERTY LINE.
 FIGURES IN CIRCLES AT ENDS OF HOUSE LATERALS INDICATE 1/2" RISE PER FOOT TO PROPERTY LINE.
 ALL HOUSE LATERALS SHALL BE CONSTRUCTED IN A STRAIGHT ALIGNMENT AT RIGHT ANGLES FROM THE MAIN LINE SEWER EXCEPT AS SHOWN ON THE PLAN. HOUSE LATERALS FROM CRIMETS SHALL NOT HAVE AN ANGLE OF LESS THAN 45 DEGREES WITH THE MAIN LINE SEWER.
 THE CONTRACTOR SHALL NOTIFY THE CONSTRUCTION DIVISION BY TELEPHONE MADISON 9-470, EXT. 81851 AT LEAST 24 HOURS BEFORE STARTING ANY WORK UNDER THIS CONTRACT.
 CONSTRUCTION IN STATE HIGHWAYS SHALL CONFORM WITH STATE HIGHWAY PERMIT AND THE CONTRACTOR SHALL PAY ALL COSTS IN CONNECTION THEREWITH.
 ALL STATE AND LOCAL TRENCH SAFETY ORDERS WILL BE RIGIDLY ENFORCED.
 NOTE: TEMPORARY PREMIX (MIN. 2" THICK) SHALL BE INSTALLED AND MAINTAINED FOR A MINIMUM PERIOD OF 30 DAYS AT THE EXPENSE OF THE CONTRACTOR. FINAL RESURFACING SHALL BE IN ACCORDANCE WITH THE FOLLOWING RESURFACING SCHEDULE:

PAGE	STREET	TYPE OF RESURFACING
4	POINSETTIA PL.	9" CONCRETE ON 6" BASE TYPE "A" (SEE PLAN)
3-4	SANTA MONICA BLVD.	AS PER STATE HWY. ENCROACHMENT PERMIT
3-4	GREENACRE AVE. & POINSETTIA DR.	2" R. O.
4	FULLER AVE.	7" R. O. O.
4	ODDEN DR.	4" R. O. O. OVER 12" BASE TYPE "A"
4	ORANGE GROVE AVE.	6" R. O. O.
4	FAIRFAX AVE.	8" CONCRETE

ALL CONCRETE CROSS GUTTERS, CURBS, GUTTERS AND DRIVEWAYS SHALL BE TURNED OR JACKED PER LOS ANGELES COUNTY ROAD DEPARTMENT REQUIREMENTS.
 THE FOLLOWING LATEST REVISED STANDARD PLANS ON FILE IN THE OFFICE OF COUNTY ENGINEER SHALL APPLY IN THE CONSTRUCTION OF THIS PROJECT.

EROSION	5.1
MINIMUM EXCAVATION SAFETY REQUIREMENTS	5.2
BRICK MANHOLE	5.3
MANHOLE FRAME AND COVER	5.3
MANHOLE STEP	5.3
BEARING FOR SEWER PIPE	5.3
SPECIAL SUPPORT AND PROTECTION	5.3
CRACKING AND DISPLACEMENT	5.3
STANDARD WYE SUPPORT	5.3
STOPPER	5.3
CRIMET PIPE & BASE	5.3

THE UNDERGROUND UTILITY COMPANIES WITHIN THE LIMITS OF THIS PROJECT ARE AS FOLLOWS:
 (1) Los Angeles City Water and Power
 (2) Southern California Gas Co.
 (3) Pacific Telephone Co.
 (4) Southern California Edison Co.



INDEX MAP
 Scale: 1" = 600'
 P.C. 7711

NO CHARGE FOR CONNECTIONS

WEST HOLLYWOOD RELIEF SEWERS PRIVATE CONTRACT NO. 7711

PROFILE, ALIGNMENT AND GRADE OF
 SANITARY SEWERS

TO BE CONSTRUCTED IN
POINSETTIA PLACE
 AND OTHER RIGHTS OF WAY

2 SHEETS, 4 PAGES

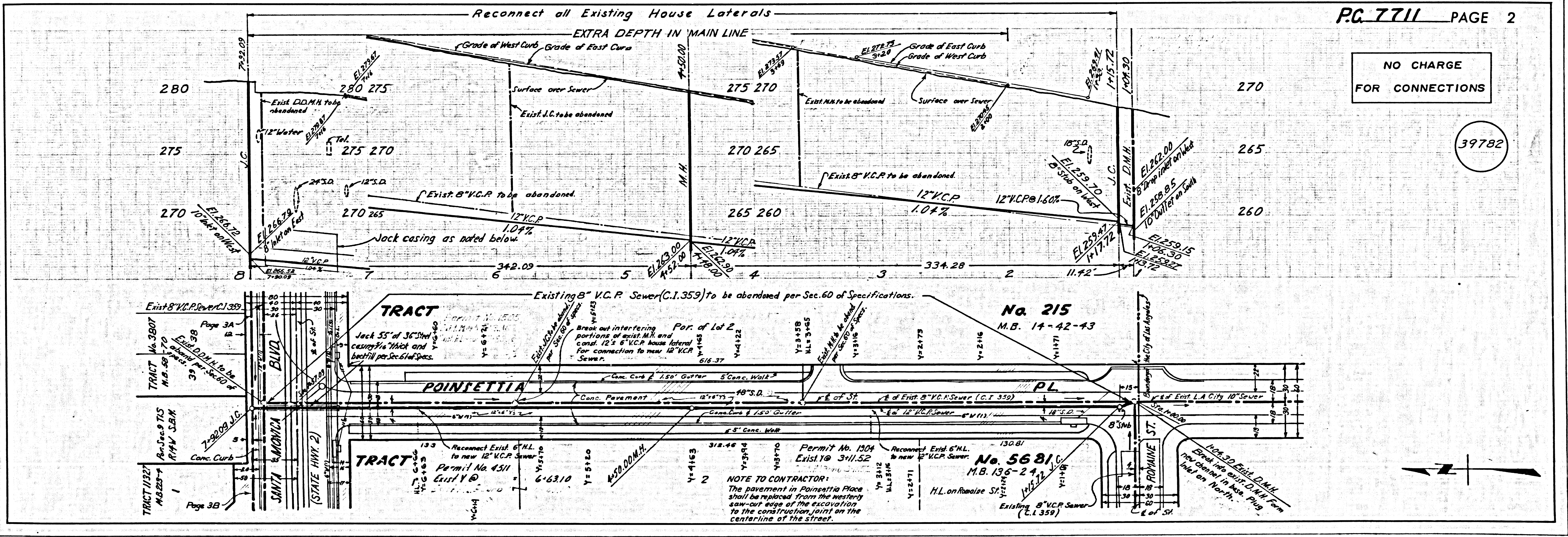
SCALE: HORIZ. 1" = 40'
 VERT. 1" = 4'
 COUNTY OF LOS ANGELES, CALIFORNIA

JOHN A. LAMBIE COUNTY ENGINEER
 APPROVED BY: Richard M. Cron ASST. SANITATION ENGINEER
 APPROVED BY: J. D. PARKHURST CHIEF ENGINEER OF COUNTY SANITATION DISTRICT NO. 4
 APPROVED BY: G. M. DODWELL OFFICE ENGINEER

SUBMITTED BY: H. W. J. 7-26-67
 REG. C. E. NO. 2408
 NOTES:
 WORK SHALL BE CONSTRUCTED ACCORDING TO STANDARD SPECIFICATIONS DATED May 25, 1962 as amended, ON FILE IN THE OFFICE OF THE COUNTY ENGINEER AND SHALL BE PROSECUTED ONLY IN THE PRESENCE OF THE COUNTY ENGINEER.
 GRADES TO WHICH THIS IMPROVEMENT IS TO BE CONSTRUCTED ARE SHOWN ON PLANS AND PROFILES. GRADE POINTS FOR TOP OF CURB, CENTER LINE OF STREET OR CENTER LINE OF ALLEY ARE SHOWN BY CIRCLES ON PROFILES AT ALL POINTS BETWEEN DESIGNATED POINTS. THE GRADE SHALL BE ESTABLISHED SO AS TO CONFORM TO A STRAIGHT LINE BETWEEN SAID DESIGNATED POINTS.
 REVISIONS ARE IN PEEET ABOVE U.S.C. & G.S. SEA LEVEL DATUM OF 1929.
 UNIT PRICES FOR ADDITIONAL WORK WHICH MAY BE REQUIRED BY WHICH CANNOT BE ASCERTAINED IN ADVANCE, SHALL BE SUBMITTED IN THE PROPOSAL.
 THIS DRAWING AND THE DATA HEREON ARE HEREBY MADE A PART OF THE SPECIFICATIONS.

LAYOUT	BERNDS	FEB. 1967	UNDERGROUND	R.W. GRIFFIN	7-20-67
TRACED	BERNDS	FEB. 1967	BENCH MARKS	J.V. BOWLES	7-20-67
CHECKED	HOWARD	FEB. 1967	MAINTENANCE	G.M. DODWELL	7-21-67
F.B.	2775 - 2773		INSPECTOR		
A.B.	26 - 5332		RECORD PLANS		

WEST HOLLYWOOD RELIEF SEWERS



NO CHARGE FOR CONNECTIONS

39782

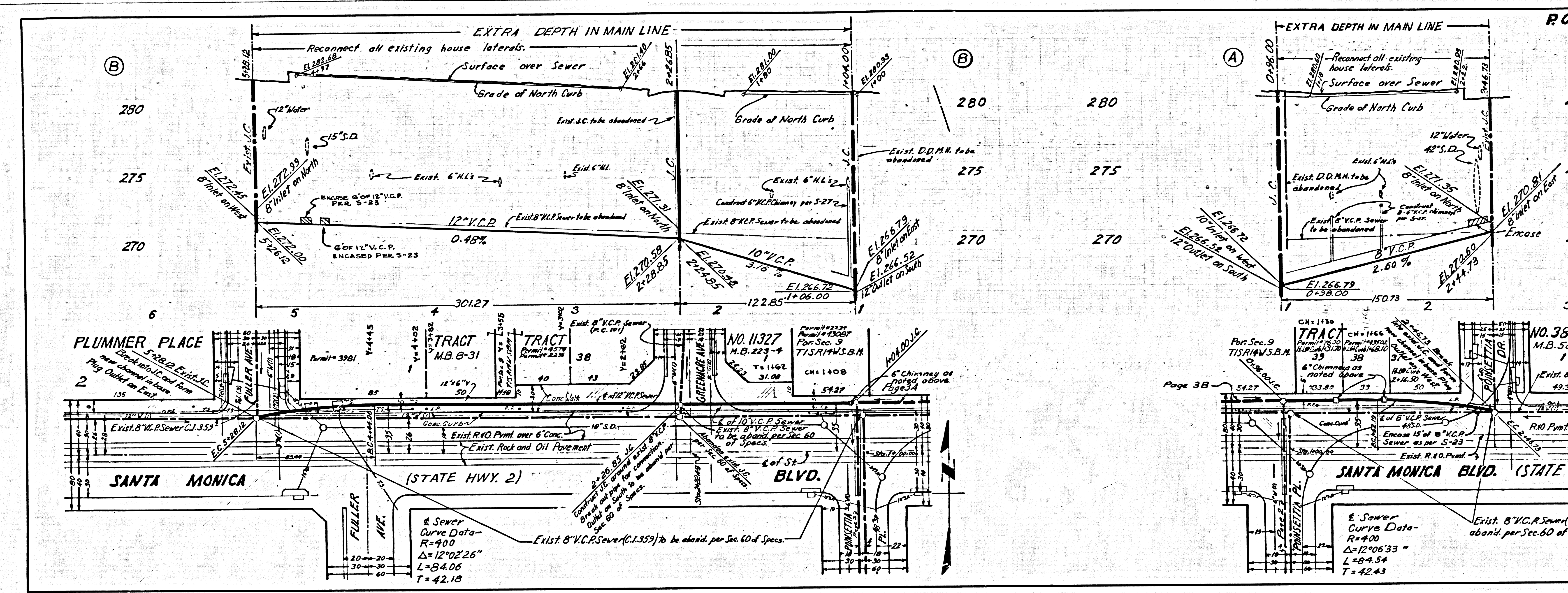
NOTE TO CONTRACTOR:
 The pavement in Poinsettia Place shall be replaced from the existing saw-cut edge of the excavation to the construction joint at the centerline of the street.

8-10-67 73 410
 7-21-67 2715 33-31
 7-21-67 2715 33-31

WEST HOLLYWOOD RELIEF SEWERS

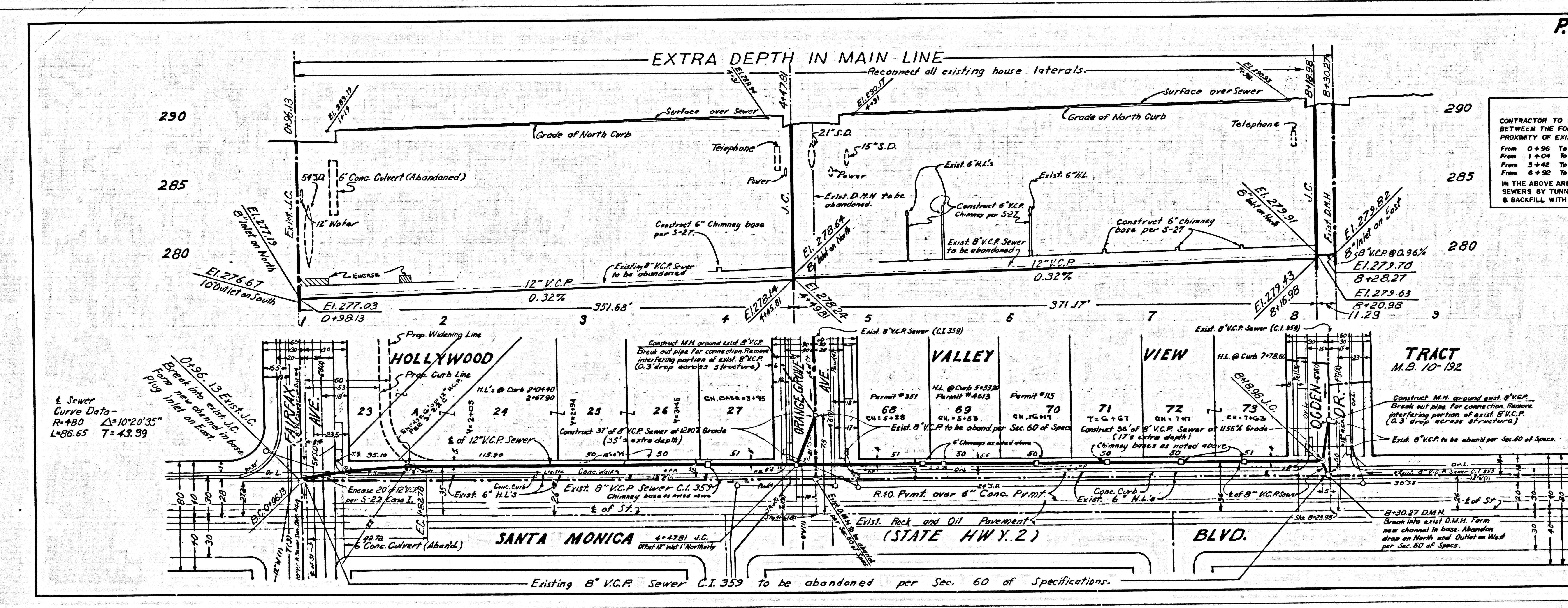
8. P.B. 2715, 70-73
Type C.B. 2719, 42
2' x 12" P.B. 2719, 42
2' x 12" P.B. 2719, 42

8. P.B. 2715, 73-74
Type C.B. 2719, 42
2' x 12" P.B. 2719, 42
2' x 12" P.B. 2719, 42



NO CHARGE FOR CONNECTIONS

39783



NO CHARGE FOR CONNECTIONS

NOTE
CONTRACTOR TO USE CAUTION IN EXCAVATING BETWEEN THE FOLLOWING STATIONS DUE TO PROXIMITY OF EXISTING BUILDINGS:
From 0+36 To 2+20 (page 3A)
From 1+04 To 1+43 (page 3B)
From 5+42 To 6+42 (page 4)
From 6+92 To 7+93 (page 4)
IN THE ABOVE AREAS CONSTRUCT MAINLINE SEWERS BY TUNNELING PER SEC. 43 OF SPECS. & BACKFILL WITH GUNITE SAND PER SEC. 52

72' x 12" V.C.P. 0.96%
 Break into existing 12" V.C.P. from 10' offset on East.

8. P.B. 2715, 37, 42-45
Type C.B. 2719, 42
2' x 12" P.B. 2719, 42
2' x 12" P.B. 2719, 42