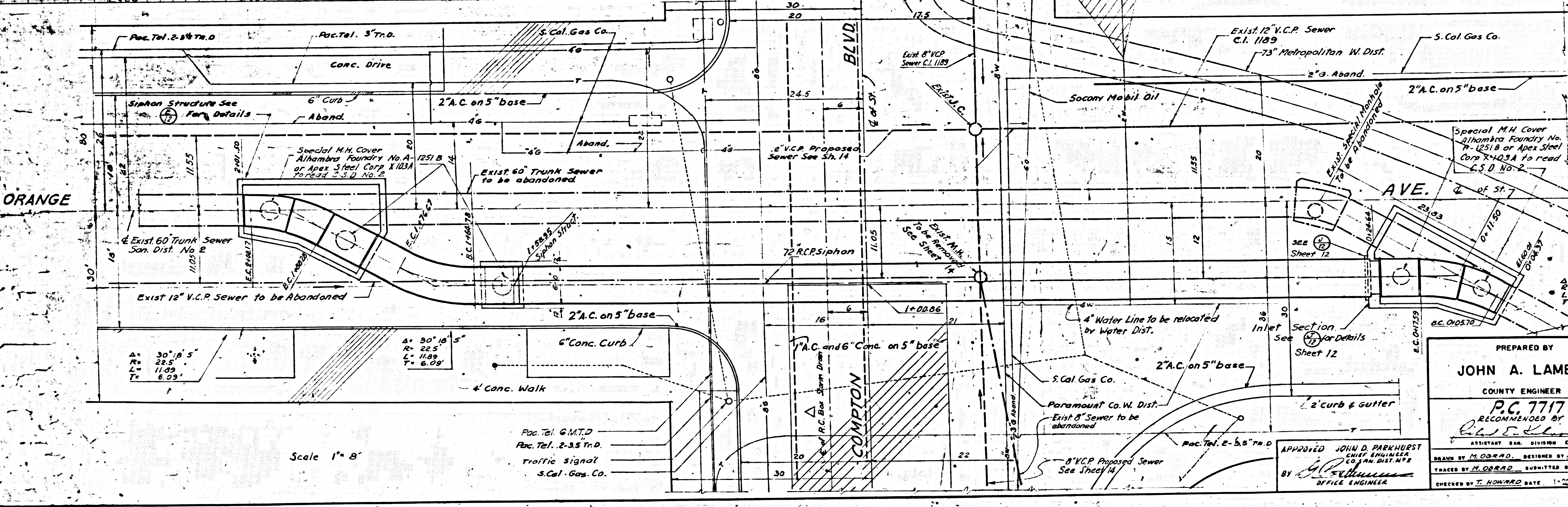
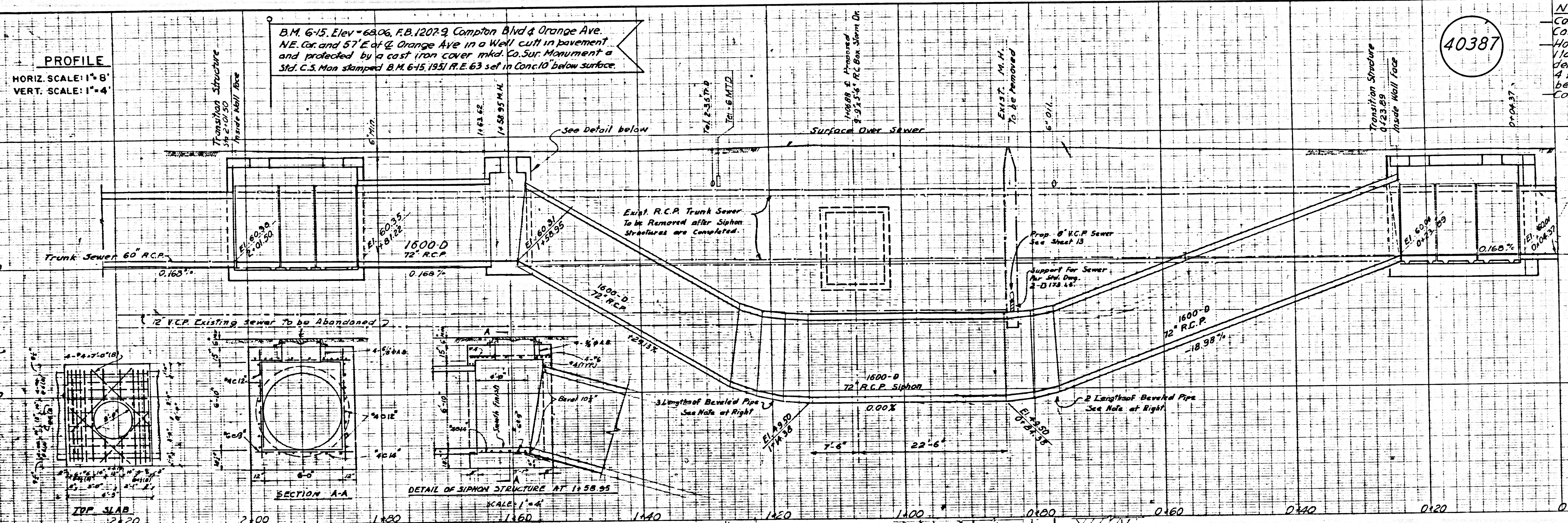
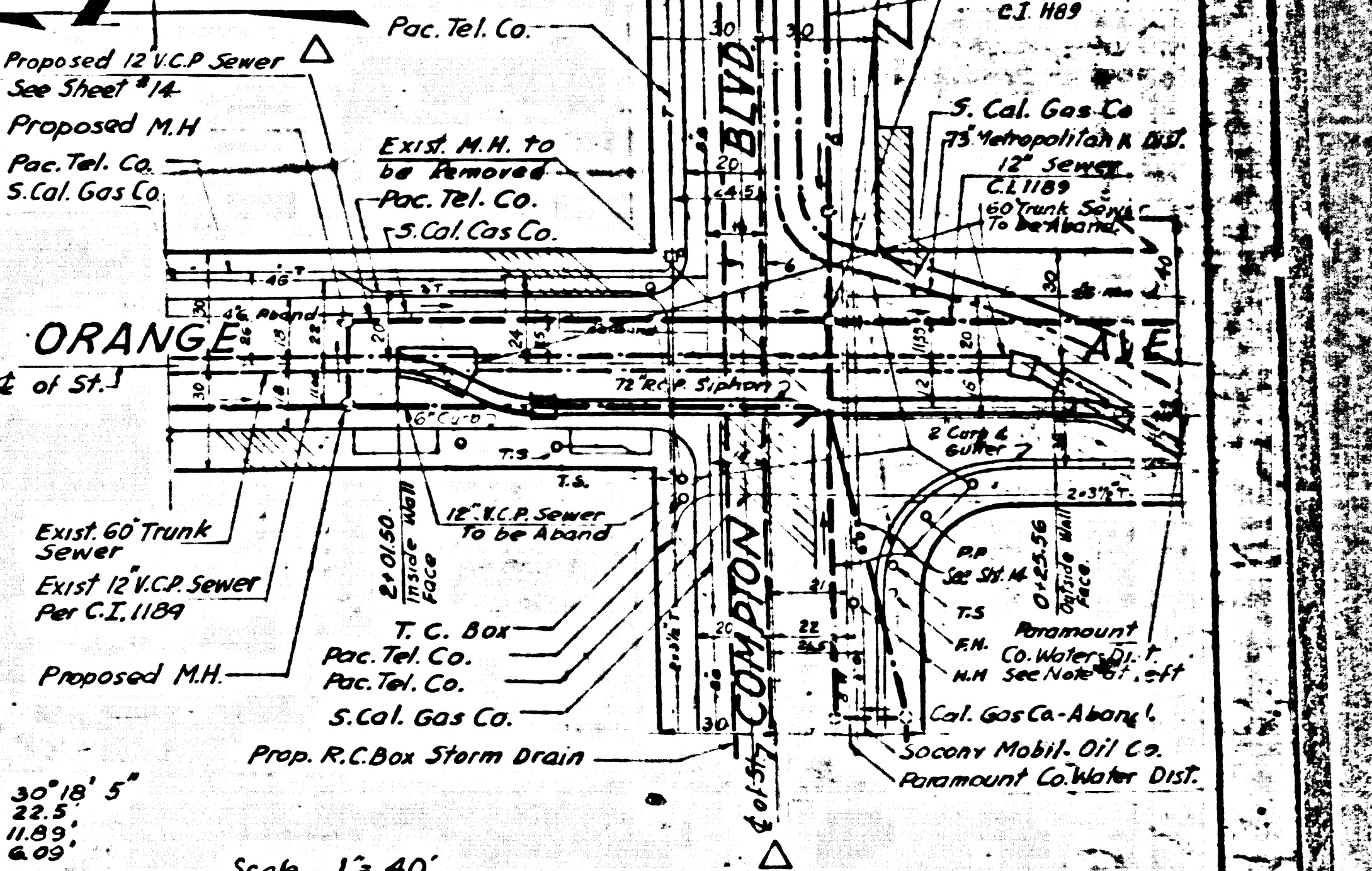
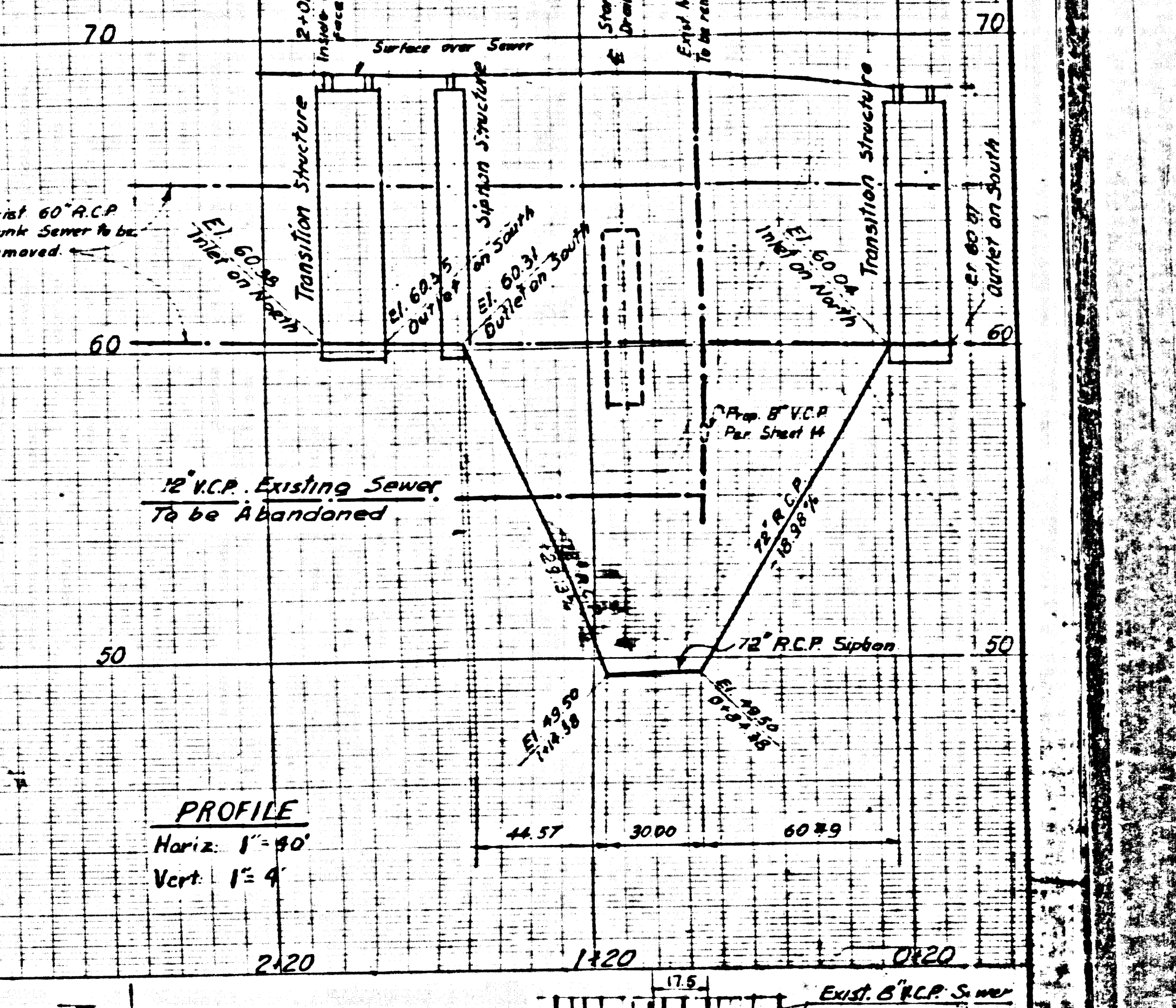


**PROFILE**  
 HORIZ. SCALE: 1"=8'  
 VERT. SCALE: 1"=4'



**NOTE**  
 Contractor shall notify Mr. Robert Powell NE 63097 at least 48 Hours Prior to Commencing construction on the Trunk Sewer.  
 Horiz & Vert Curves shall be constructed using beveled Pipe which has a maximum bevel of 5 degrees on each End. No one joint shall have a deflection greater than 10 Degrees. Joints shall be a minimum of 4 feet apart. The Pipe used to construct the horizontal curves shall be factory fabricated to Centerline Radia as shown.  
 Contractor to maintain How at all time.



Scale 1"=8'

Scale 1"=40'

40387

1964 STORM DRAIN BOND ISSUE

LOS ANGELES COUNTY FLOOD CONTROL DISTRICT

PROJECT NO 6101

PARAMOUNT

SANITARY SEWER RECONSTRUCTION SIPHON NO. 1 SIPHON DETAIL 3 PLAN AND PROFILE

APPROVED BY *Walter Smith*

SCALE DATE NO. 364-6101-22 II A SHOWN APR. 67 SHEET 11 OF 16

MARK	DATE	REVISIONS
Δ	9-11-67	Revised per Note on Sheet 5

PREPARED BY **JOHN A. LAMBIE**  
 COUNTY ENGINEER

RECOMMENDED BY **P.C. 7717**  
*RECOMMENDED BY*

APPROVED **JOHN D. PARKHURST**  
 CHIEF ENGINEER  
 COUNTY DISTRICT NO. 1

BY *W. J. ...*  
 OFFICE ENGINEER

DESIGNED BY *...*  
 CHECKED BY *...*  
 TRACED BY *...*  
 SUBMITTED BY *...*  
 ALLOCATED BY *...*

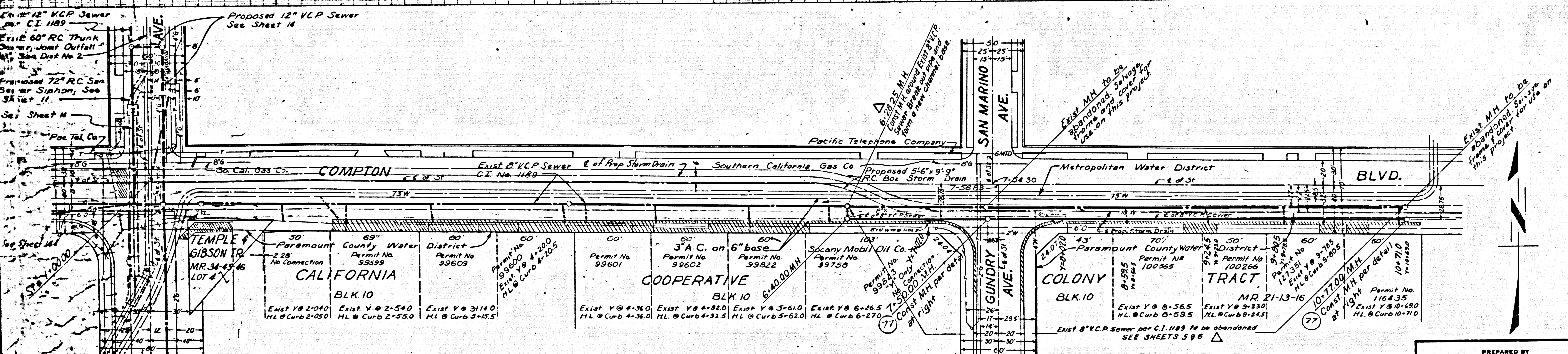
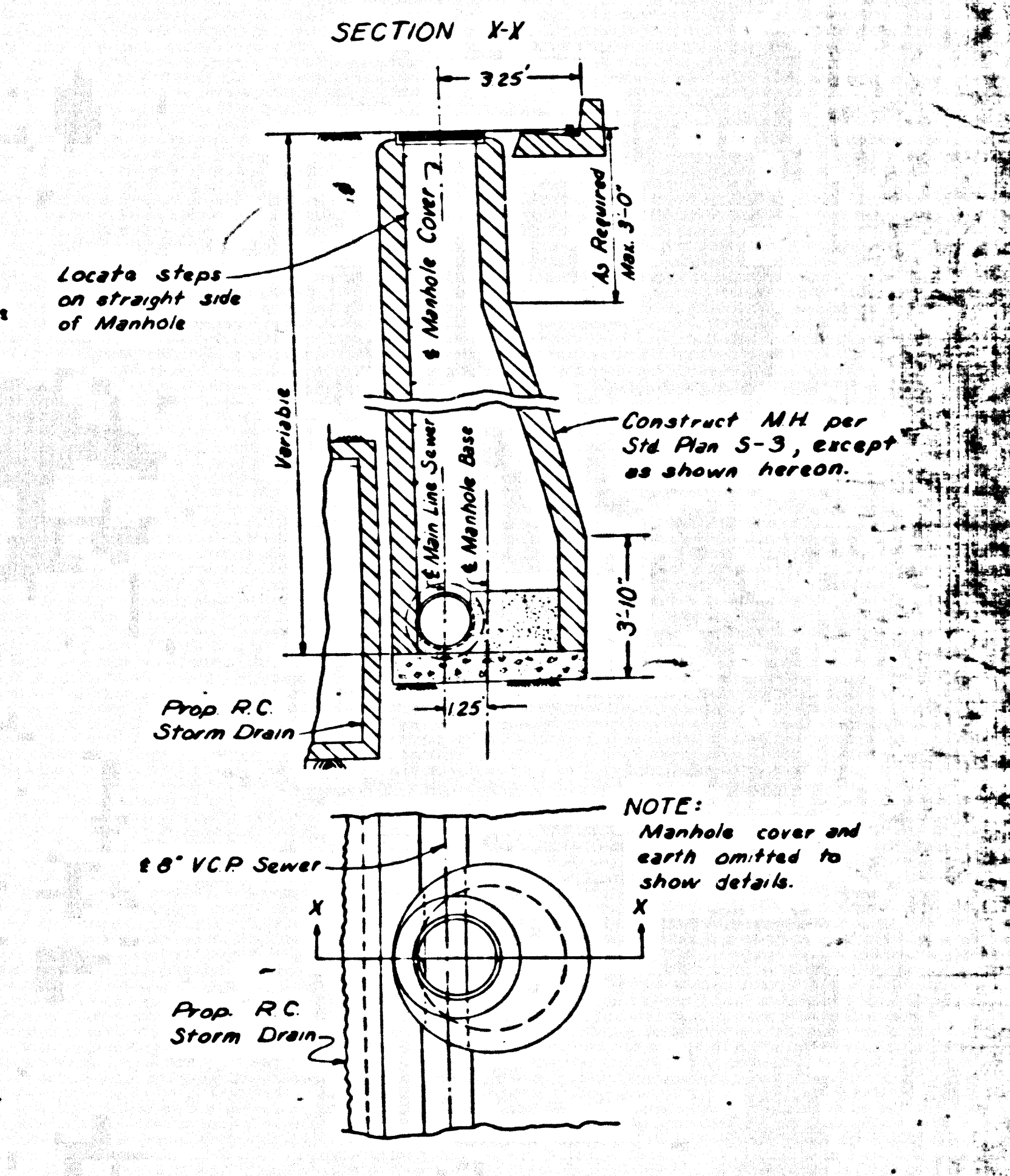
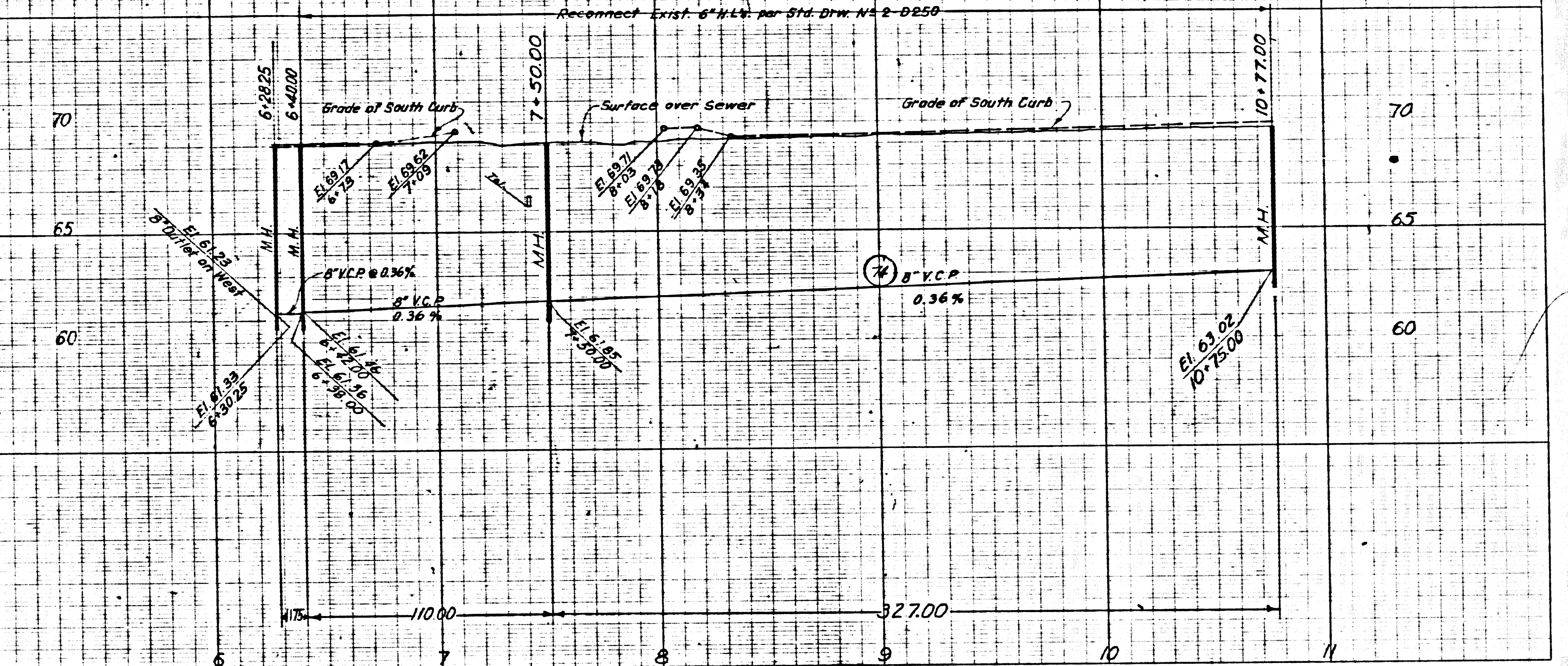


**PROFILE**  
 HORIZ. SCALE: 1"=40'  
 VERT. SCALE: 1"=4'

**B.M. 6-15** Elev. 68.06  
 Compton Blvd & Orange Ave. N.E. Cor. and  
 S.E. of 8 of Orange Ave. in a well cut in  
 pavement and protected by a cast iron  
 cover and Co. Survey Monument a 316 C.S. Mon.  
 stamped B.M. 6-15, 1951 RE 663 set in conc.  
 4" below surface.  
 FB-1207-19

**GENERAL NOTES 40388**

1. For legend see standard plan S-1.
2. Use extra strength vitrified clay pipe.
3. Use mechanical compression joints for all vitrified clay pipe sewers per spec's, sec. 36.48, 49.
4. All structures shall be brick sewer structures as per plan S-3, except where noted.
5. Use standard manhole frames and covers as per plan S-15.
6. All manhole frames and covers are to be reused on this project.
7. Use formula N<sup>1</sup>, Sec. 54 of specifications to compute allowable leakage.
8. Flow to be maintained at all times.
9. Resurface trenches within the paved area of streets as noted on storm drain plans.
10. Abandoned portions of main line sewers or house laterals shall be sealed with brick and cement mortar.
11. Sanitary sewers shall be constructed according to Standard Specifications dated May 25, 1962, on file in the office of the County Engineer and shall be prosecuted only in the presence of the County Engineer.



**PLAN MANHOLE DETAILS**  
 No Scale

**PLAN**  
 SCALE: 1"=40'

NO CONNECTIONS FOR THE DISPOSAL OF INDUSTRIAL WASTES SHALL BE MADE TO SEWERS SHOWN ON THESE DRAWINGS WITHOUT WRITTEN PERMISSION FROM THE CHIEF ENGINEER AND GENERAL MANAGER OF THE COUNTY SANITATION DISTRICT.

BEFORE BREAKING INTO ANY EXISTING STRUCTURE AND BEFORE FINAL ACCEPTANCE OF THIS WORK, COUNTY SANITATION DISTRICT (DU 41284) SHALL BE NOTIFIED IN ORDER THAT REQUIRED INSPECTION CAN BE MADE.

APPROVED: JOHN D. PARKHURST  
 CHIEF ENGINEER  
 CO. SAN. DIST. NO. 2

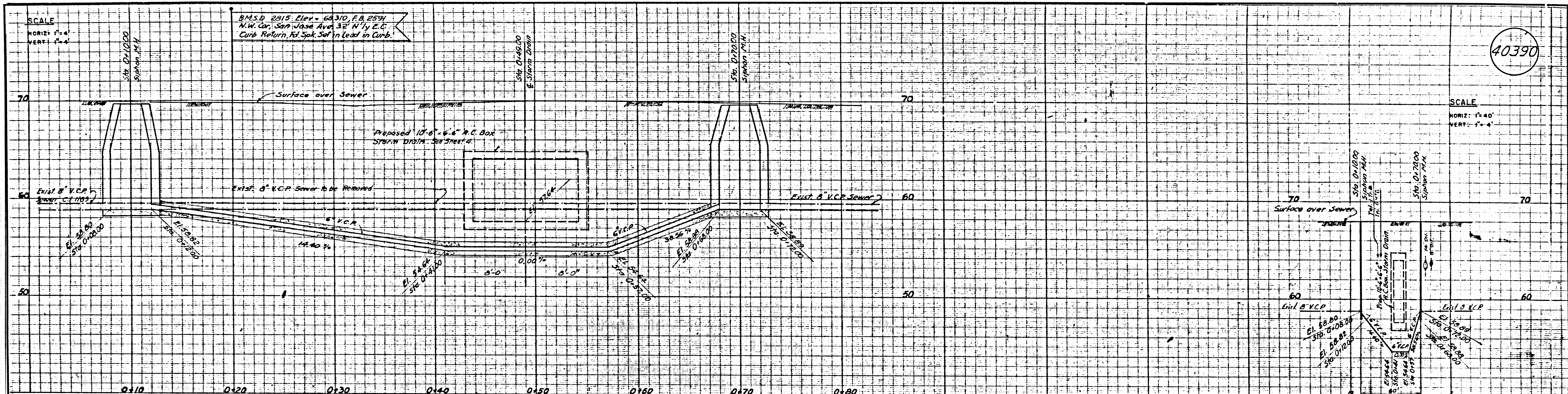
PREPARED BY <b>JOHN A. LAMBIE</b> COUNTY ENGINEER		REVISIONS MARK DATE DESCRIPTION Δ 9-11-67 Revised per sheet 5		LOS ANGELES COUNTY FLOOD CONTROL DISTRICT	
COUNTY ENGINEER <b>P. C. 7717</b> RECOMMENDED BY <i>[Signature]</i> ASSISTANT SANITATION DISTRICT ENGINEER		DESIGNED BY <i>[Signature]</i> COUNTY ENGINEER		PROJECT NO. 6101 PARAMOUNT SANITARY SEWER RECONSTRUCTION PLAN AND PROFILE	
DRAWN BY <i>[Signature]</i> TRACED BY <i>[Signature]</i> CHECKED BY <i>[Signature]</i>		DESIGNED BY <i>[Signature]</i> COUNTY ENGINEER		APPROVED BY <i>[Signature]</i> CHIEF ENGINEER	
SCALE As Shown		DATE APR. 67		SHEET 13 OF 16	

1964 STORM DRAIN BOND ISSUE

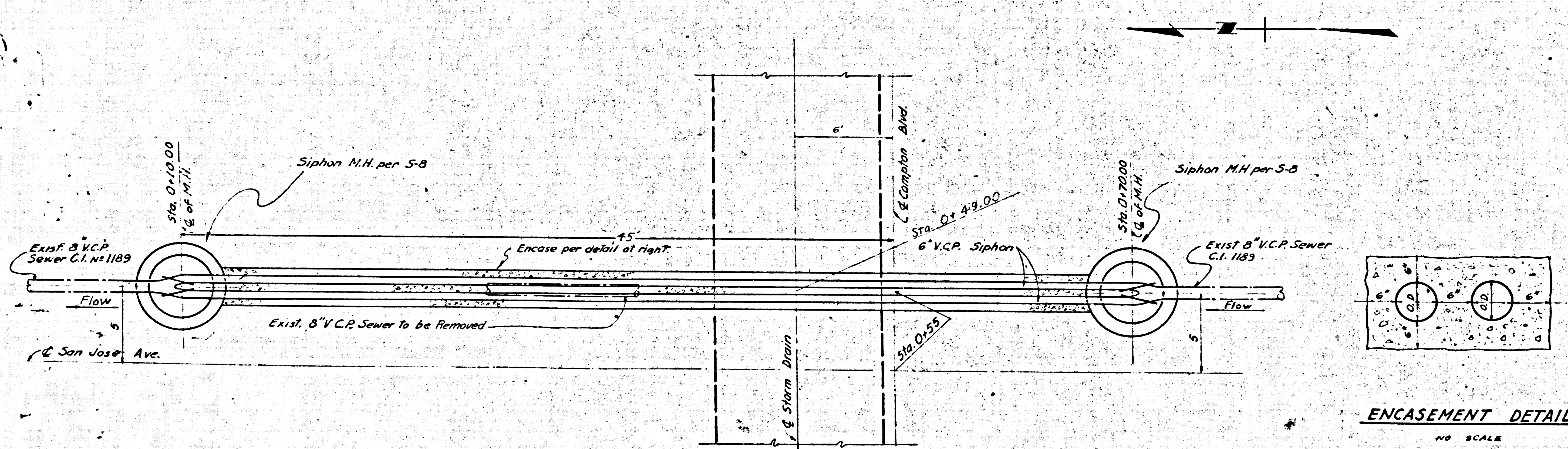




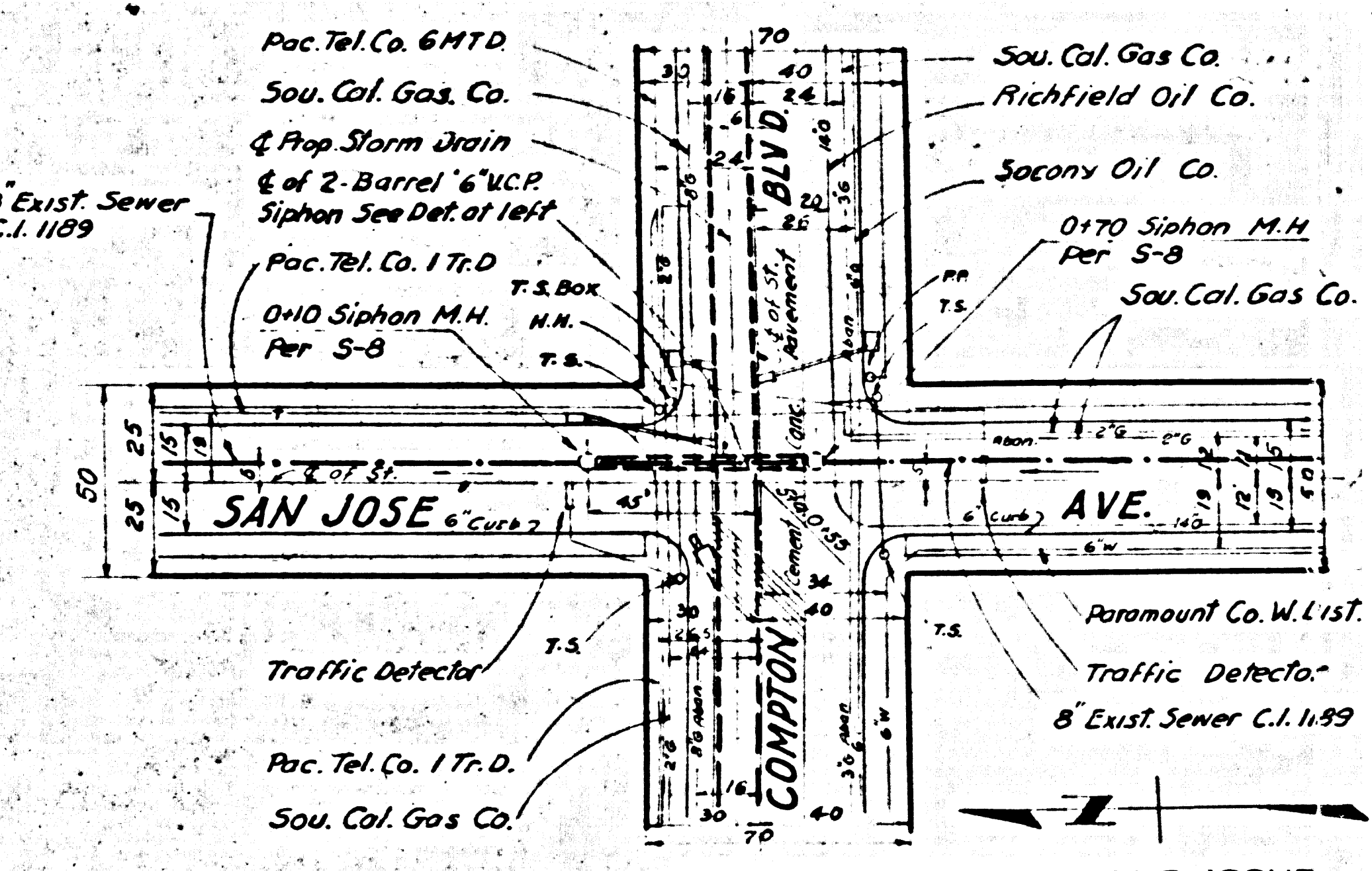




40390



ENCASEMENT DETAIL  
NO SCALE



1964 STORM DRAIN BOND ISSUE  
LOS ANGELES COUNTY  
FLOOD CONTROL DISTRICT

REVISIONS			
MARK	DATE	DESCRIPTION	

PLAN AND PROFILE OF PROPOSED TWO BARREL  
6" V.C.P. SIPHON NO 2  
SAN JOSE AVE AND COMPTON BLVD.  
SCALE 1"=4'

PREPARED BY  
**JOHN A. LAMBIE**  
COUNTY ENGINEER

PROJECT NO. 6101  
**PARAMOUNT**  
SANITARY SEWER RECONSTRUCTION  
STA. 0+10.00 TO STA. 0+70.00  
PLAN AND PROFILE

APPROVED: **JOHN D. PARKHURST**  
CHIEF ENGINEER  
S.D. SAN. DIST. #12  
BY: **W. J. McLELLAN**  
OFFICE ENGINEER

RECOMMENDED BY  
**R.C. 7117**  
RECOMMENDED BY  
**W. J. McLELLAN**  
SANITATION DIVISION  
DRAWN BY: **M. BRAD** DESIGNED BY: **M. BRAD**  
TRACED BY: **M. BRAD** SUBMITTED BY: **W. J. McLELLAN**  
DATE: **1-10-66**

APPROVED BY: **Walter J. McLe...**  
DATE: **APR. '67**  
SCALE: **AS SHOWN**  
DWG. NO. **364-6101-D2 5**  
SHEET **15** OF **16**